

Knapsack Power Sprayer

AM-666-NEO 2S

AM-708-NEO 2S

AM-909-NEO 2S



DISCLAIMER: DUE TO CONSTANT UPGRADATION, FEATURES AND SPECIFICATIONS ARE SUBJECT TO CHANGE WITHOUT NOTICE



**BEFORE OPERATING THIS MACHINE,
PLEASE READ THESE INSTRUCTIONS CAREFULLY**

CAUTION

1. Stop running the gasoline engine before the tank is refueled, and ensure that the gasoline engine is far from the fire. Against the position, discharge the exhaust gas from the rooms, channels using gasoline engine or any other closed places.
2. Forbid to touch the muffler and the body when the gasoline engine runs and just stops.
3. Don't touch the ignition plug cap and wires, to avoid the electrical shock
4. Forbid children and persons unconcerned to touch the gasoline engine.
5. Ensure the cooling of the muffler and the body, cover the gasoline engine after daily work.
6. Against the problem, the damage or the misfire of gasoline engine, check and maintain the gasoline regularly and clean the deposit carbon in the muffler and in the cylinder exhaust.
7. Forbid to use pure gasoline (without two-stroke engine oil) as fuel.
8. Against the damage of gasoline engine and the instruments, forbid to accelerate abruptly, to run speedily and stop abruptly.
9. Forbid the drunk, the dizzy and the pregnant to use the gasoline engine.

PREPARTION

Refuel

Use the mixture of the gasoline and the two stroke engine oil, the volume ratio is 25-30:1 (Fig-1)

Check and clean the air filter

The air filter must be often cleaned, or the polluted air filter will lower the output power of the engine. If the core is blocked by dust, use gasoline to clean the core and the inside of the air filter, then dip in the oil, wring oil out and put the core back (Fig 2)

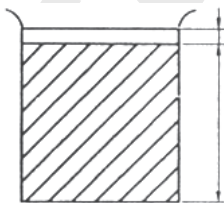


Fig 1

1. The FC Two-stroke engine oil
25. The Gasoline

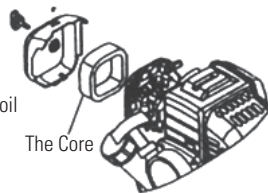


Fig 2

START UP

1. Turn on the gasoline switch until the gasoline flows out the clear plastic pipe. (Fig 3)
2. Close the choke totally (Fig 4)
If the engine is heated, the choke must be totally opened.
3. Open half the throttle.
4. Draw the starter several times slowly, and then draw quickly.

Note: if the excessive gasoline causes the difficult start, take down the ignition plug and the input pipe, open the choke and the throttle totally, draw the starter several times then install the input pipe and start the engine. After the startup, open the choke totally.



Fig 3

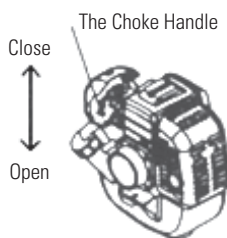


Fig 4

RUNNING

1. After the engine starts, run 3-5 minutes at a low speed
2. When the engine is heated enough, adjust the throttle handle to the corresponding speed.
3. Note: don't accelerate abruptly due to bad lubrication of the engine at the beginning of startup.
4. Avoid the speedy idle motion and over speed motion. If the throttle is totally opened, the engine will run over speed, which not only shortens the service life of the engine but also causes more problems in the engine.

STOPPING

1. Reduce the gasoline engine to the slowest speed and run 3-5 mins
2. Press the stop switch to stop the engine.

MAINTENANCE

1. Daily check

- Check all screws and nuts
- Check oil leakage or air leakage

2. Check after running 20 hours

- Clean the core of the air cleaner
- Clean the gasoline filter

3. Check after running 50 hours

- Refasten the nuts of the cylinder
- Clean the accumulated carbon both in the combustion chamber and in the exhaust of the cylinder
- Clean the accumulated carbon in the ignition plug, adjust the clearance to 0.6mm (Fig 5)
- Clean the accumulated carbon both in the intake and in the exhaust of the muffler (Fig 6,7)

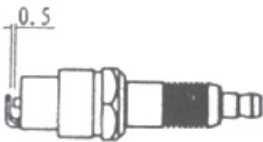


Fig 5

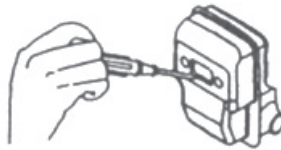


Fig 6

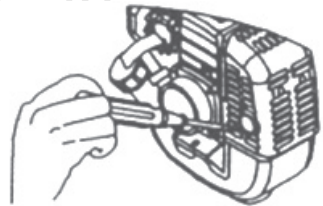


Fig 7

STORAGE

If the gasoline engine isn't used for a long time, it must be maintained as follows:

1. Remove the fuel in the tank and in the carburetor, close the choke totally, draw the starter 3-5 times.
2. Take down the spark plug, add certain engine oil from the spark plug hole into the cylinder, and draw the starter 2-3 times to move the piston to the top dead center, then install the spark plug.
3. Use the soft cloth with engine oil to clean the surface of the engine, stor the engine in a dry and windy place for the next use.

TRUBLE SHOOTING

1. Fail to start

- Oil switch is not turned on
- Gasoline is mixed with water, replace it
- The ignition plug has accumulated carbon or has been broken
- Poor contact of the high voltage wire with the spark plug

2. The engine can start, but can't run fast

- The choke is either open or closed fully
- The ratio of engine oil and the gasoline is normal or not
- Maybe there is water in gasoline

3. The gasoline engine can run, but has not enough power

- Maybe the core of the air filter is blocked by dust
- Maybe the cylinder exhaust and the muffler are blocked by accumulated carbon
- The piston, the piston rings and cylinder have been badly worn out
- Maybe the gasoline filter is blocked by dust
- The body or the top of the shaft has oil leakage and air leakage

4. The gasoline engine stops suddenly when running

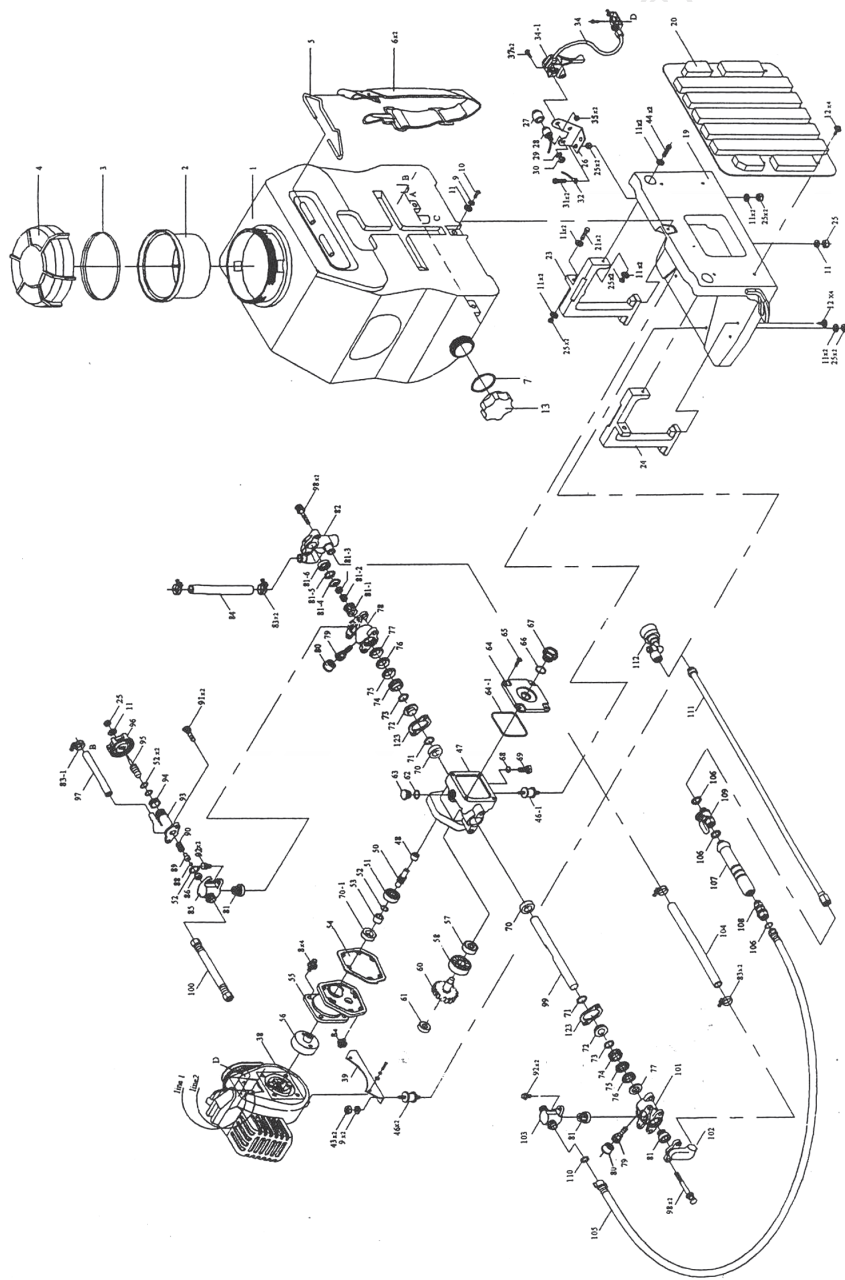
- Run out of the gasoline
- The high voltage wire drops
- The ignition plug has accumulated carbon or has been broken
- The gasoline filter is blocked by dust
- Maybe there is water in the gasoline
- The air hole of the tank lid is blocked by dust

PART NO.	PART NAME
AM-666-NEO 2S-E01	Screw
AM-666-NEO 2S-E02	Cleaner Outside Cover
AM-666-NEO 2S-E03	Filter Element
AM-666-NEO 2S-E04	Screw Assy
AM-666-NEO 2S-E05	Cleaner Inside Cover
AM-666-NEO 2S-E06	Screw
AM-666-NEO 2S-E07	Choke
AM-666-NEO 2S-E08	Choke Handle
AM-666-NEO 2S-E09	Carburetor
AM-666-NEO 2S-E10	Gasket, Carburetor Side
AM-666-NEO 2S-E11	Screw Assy
AM-666-NEO 2S-E12	Inlet Mainfold
AM-666-NEO 2S-E13	Washer, Cylinder Side
AM-666-NEO 2S-E14	Pin
AM-666-NEO 2S-E15	Screw Assy
AM-666-NEO 2S-E16	Fan Cover
AM-666-NEO 2S-E17	Clutch Step Screw
AM-666-NEO 2S-E18	Washer
AM-666-NEO 2S-E19-21	Clutch Assy
AM-666-NEO 2S-E20	Washer
AM-666-NEO 2S-E21	Spring
AM-666-NEO 2S-E22	Nut
AM-666-NEO 2S-E23	Washer
AM-666-NEO 2S-E24	Stop Cord Comp.
AM-666-NEO 2S-E25	Primary Cord Grommet
AM-666-NEO 2S-E26	Magneto Stator
AM-666-NEO 2S-E26	Magneto Rotor
AM-666-NEO 2S-E27	Screw
AM-666-NEO 2S-E28	Front Half Crankcase

PART NO.	PART NAME
AM-666-NEO 2S-E29	Guide Plate
AM-666-NEO 2S-E30	Gasket, Crankcase
AM-666-NEO 2S-E31	Oil Seal
AM-666-NEO 2S-E32	Ball-Bearing
AM-666-NEO 2S-E33	Key
AM-666-NEO 2S-E34	Crankshaft Comp.
AM-666-NEO 2S-E35	Rear Half Crankcase
AM-666-NEO 2S-E36	Starter Case AM 708 Only
AM-666-NEO 2S-E36+37+38	Starter Pawl & Spring Assy AM 708
AM-666-NEO 2S-E36+37+38	Starter Pawl & Spring Assy AMP 768
AM-666-NEO 2S-E37	Starter Pawl Spring
AM-666-NEO 2S-E38	Starter Pawl
AM-666-NEO 2S-E39	Screw
AM-666-NEO 2S-E40	Recoil Spring
AM-666-NEO 2S-E41	Starter Pulley
AM-666-NEO 2S-E42	Recoil Starter Body
AM-666-NEO 2S-E43	Rope Guide
AM-666-NEO 2S-E44	Rope
AM-666-NEO 2S-E45	Starter Handle
AM-666-NEO 2S-E46	Gasket
AM-666-NEO 2S-E47	Screw Assy
AM-666-NEO 2S-E48	Cover
AM-666-NEO 2S-E49	Cover
AM-666-NEO 2S-E50	Screw Assy
AM-666-NEO 2S-E50	Gasket Muffler
AM-666-NEO 2S-E51	Plug Cap
AM-666-NEO 2S-E52	Screw
AM-666-NEO 2S-E53	Plug Cover
AM-666-NEO 2S-E54	Plug

PART NO.	PART NAME
AM-666-NEO 2S-E55	Screw
AM-666-NEO 2S-E56	Washer
AM-666-NEO 2S-E57	Washer
AM-666-NEO 2S-E58	Sealing Washer
AM-666-NEO 2S-E59	Muffler
AM-666-NEO 2S-E60	Bolt
AM-666-NEO 2S-E61	Washer
AM-666-NEO 2S-E62	Nut
AM-666-NEO 2S-E63	Cylinder
AM-666-NEO 2S-E64	Gasket, Cylinder
AM-666-NEO 2S-E65	Ring, Piston
AM-666-NEO 2S-E66	Piston
AM-666-NEO 2S-E66	Gasket, Fuel Tank Cap
AM-666-NEO 2S-E67	Stop Ring
AM-666-NEO 2S-E68	Pin, Piston
AM-666-NEO 2S-E69	Needle, Bearing
AM-666-NEO 2S-E70	Piston Pin Circlet
AM-666-NEO 2S-E71	Fuel Tank Cap
AM-666-NEO 2S-E72	Air Inlet Mouth
AM-666-NEO 2S-E73	Frame
AM-666-NEO 2S-E74	Sealing Washer
AM-666-NEO 2S-E75	Outlet Fuel Pipe
AM-666-NEO 2S-E76	Inlet Fuel Pipe
AM-666-NEO 2S-E77	Primary Cord Grommet
AM-666-NEO 2S-E78	Cleaner
AM-666-NEO 2S-E79	Fuel Tank - AM 708
AM-666-NEO 2S-E80	Screw
AM-666-NEO 2S-E81	Screw
AM-666-NEO 2S-E82	Starter Pulley Assy

TANK & PUMP PARTS DIAGRAM OF KNAPSACK POWER SPRAYER AM-666-NEO 2S | AM-708-NEO 2S | AM-909-NEO 2S



PART NO.	PART NAME
AM-666-NEO 2S-P01	Chemical Container
AM-666-NEO 2S-P02	Filter
AM-666-NEO 2S-P03	Gasket
AM-666-NEO 2S-P04	Container Cover
AM-666-NEO 2S-P05	Chain Holder
AM-666-NEO 2S-P06	Strap
AM-666-NEO 2S-P07	Gasket
AM-666-NEO 2S-P08	Screw
AM-666-NEO 2S-P09	Spring Washer
AM-666-NEO 2S-P10	Screw
AM-666-NEO 2S-P11	Washer
AM-666-NEO 2S-P12	Screw
AM-666-NEO 2S-P13	Drain Cup
AM-666-NEO 2S-P19	Frame
AM-666-NEO 2S-P20	Pad
AM-666-NEO 2S-P23	Right Stand
AM-666-NEO 2S-P24	Left Stand
AM-666-NEO 2S-P26	Fixed Plate
AM-666-NEO 2S-P28	Stop Switch
AM-666-NEO 2S-P32	Cord Comp
AM-666-NEO 2S-P34	Throttle Wire
AM-666-NEO 2S-P34-1	Throttle Lever
AM-666-NEO 2S-P39	Engine Stand
AM-666-NEO 2S-P46	Joint S
AM-666-NEO 2S-P46-1	Joint-L
AM-666-NEO 2S-P47	Crank Case
AM-666-NEO 2S-P48	Bearing
AM-666-NEO 2S-P50	Shaft

PART NO.	PART NAME
AM-666-NEO 2S-P51	Bearing
AM-666-NEO 2S-P52	O-Ring
AM-666-NEO 2S-P53	Steel Pipe
AM-666-NEO 2S-P54	Gasket
AM-666-NEO 2S-P55	Drum Case
AM-666-NEO 2S-P56	Drum Clutch
AM-666-NEO 2S-P57	Bearing
AM-666-NEO 2S-P58	Bearing
AM-666-NEO 2S-P60	Gear Shaft and Gear
AM-666-NEO 2S-P61	Bearing
AM-666-NEO 2S-P62	O-Ring
AM-666-NEO 2S-P63	Oil Inlet Cup
AM-666-NEO 2S-P64	Crankcase Cover
AM-666-NEO 2S-P64-1	O-Ring
AM-666-NEO 2S-P66	O-Ring
AM-666-NEO 2S-P67	Oil Glass
AM-666-NEO 2S-P68	O-Ring
AM-666-NEO 2S-P69	Drain Plug
AM-666-NEO 2S-P70	Oil Seal
AM-666-NEO 2S-P70-1	Oil Seal
AM-666-NEO 2S-P71	O-Ring
AM-666-NEO 2S-P72	Adjusting Ring
AM-666-NEO 2S-P73	Grease Ring
AM-666-NEO 2S-P74	V-Packing Upper Seal
AM-666-NEO 2S-P75	V-Packing
AM-666-NEO 2S-P77	Packing Seat
AM-666-NEO 2S-P78	Cylinder
AM-666-NEO 2S-P79+80	Grease Cup

PART NO.	PART NAME
AM-666-NEO 2S-P81	Valve Assy
AM-666-NEO 2S-P82	Suction Chamber
AM-666-NEO 2S-P83	Clip-L
AM-666-NEO 2S-P83-1	Clip-S
AM-666-NEO 2S-P84	Suction Hose
AM-666-NEO 2S-P85	Outlet Chamber
AM-666-NEO 2S-P86	Valve Seat
AM-666-NEO 2S-P88	Pressure Valve
AM-666-NEO 2S-P89	Pressure Valve Rod
AM-666-NEO 2S-P90	Spring
AM-666-NEO 2S-P93	Relief Valve Assy
AM-666-NEO 2S-P94	Nut
AM-666-NEO 2S-P95	Pressure Valve Screw
AM-666-NEO 2S-P96	Pressure Adjusting
AM-666-NEO 2S-P97	Overflow Hose
AM-666-NEO 2S-P99	Plunger
AM-666-NEO 2S-P100	High Pressure Hose
AM-666-NEO 2S-P101	Cylinder
AM-666-NEO 2S-P102	Suction Chamber
AM-666-NEO 2S-P103	Outlet Chamber
AM-666-NEO 2S-P104	Suction Hose
AM-666-NEO 2S-P105	High Pressure Hose
AM-666-NEO 2S-P107	Hose Pipe Handle
AM-666-NEO 2S-P108	Roller
AM-666-NEO 2S-P109	Ball Cock
AM-666-NEO 2S-P111	Spray Rod (SG101-C)
AM-666-NEO 2S-P123	Fixed Plate

INSPECTION & MAINTENANCE

For safety use, make sure the machine is cleaned every three-months. Before working, make sure to inspect the filter and the nozzle, and ensure there is no impurity. After working, make sure there is no water in the pump and the hose.

If the machine needs to be repaired in the guarantee period, please return the machine to the shop. You need to provide the certificate of purchase in order to repair or get the substitute.

Before Packing, the machine should be cleaned, then use closed packaging, packaging should be firm. Store the machine in dry place.

For transportation safety. The machine should comply with ISTA.



Meaning of crossed - out wheeled dustbin:

Do not dispose of electrical machines as unsorted municipal waste, use separate collection facilities.

If electrical machines are disposed of in landfills or dumps, hazardous substances can leak into the groundwater and get into the food chain, damaging your health and well-being.

When replacing old machines with new ones, the retailer is legally obligated to take back your old machine for disposals at least free of charge.

Warranty Card

CUSTOMER COPY



Purchaser's Name & Address

Date of Delivery

Product Name

Knapsack Power Sprayer
AM-666-NEO 2S AM-708-NEO 2S AM-909-NEO 2S

Dealer's Office Seal

Product Serial No.

Dealer Sign _____

Invoice / DN No.

Customer Sign. _____

I/We accept the terms and conditions of Warranty as in the Warranty Card.

Warranty Card

DEALER'S COPY



Purchaser's Name & Address

Date of Delivery

Product Name

Knapsack Power Sprayer
AM-666-NEO 2S AM-708-NEO 2S AM-909-NEO 2S

Dealer's Office Seal

Product Serial No.

Dealer Sign _____

Invoice / DN No.

Customer Sign. _____

I/We accept the terms and conditions of Warranty as in the Warranty Card.

Warranty Card

COMPANY COPY



Purchaser's Name & Address

Date of Delivery

Product Name

Knapsack Power Sprayer
AM-666-NEO 2S AM-708-NEO 2S AM-909-NEO 2S

Dealer's Office Seal

Product Serial No.

Dealer Sign _____

Invoice / DN No.

Customer Sign. _____

I/We accept the terms and conditions of Warranty as in the Warranty Card.

1. **LIMITED WARRANTY PERIOD** : For a period of six months from the date of Sale / delivery of the product which ever is earlier. 2. **LIMITED WARRANTY OBLIGATION** : Replacement of defective part(s) by authorized dealer are free of charges. If found defective by reasons of defective material / poor workmanship, parts will be replaced and there will be no value re-imburement. 3. **TERMS & CONDITIONS** : a. Claims under warranty will be accepted on submission of Warranty Card duly filled and stamped by authorized dealer together with the original purchase document. : b. Shipping / transportation / Incidental charges incurred in replacing defective parts under warranty shall be borne by the purchaser.

WARRANTY null & void if

- (i) Lack of maintenance, (ii) Incorrect use of the machine or tampering, (iii) Use of non-genuine spare parts, (iv) Usage of acids, solvents, or any flammable materials, (v) Non-usage of filter water / clear water / soft water & using water above 40°C temperature, (vi) While using the pressure washers to draw water which is contaminated with dust & solvents (eg. paint thinners, gasoline, oil, etc.), (vii) Repair done by unauthorized service people, (viii) Those parts subject to wear & tear due to normal operations and plastic parts, rubber items etc, (ix) Loose connections, faulty electrical fixtures & fluctuations in power supply.
4. Should any failure occur during or after the warranty period, customer does not have the right to interrupt payment / price discount.
5. Incidental or consequential damages like inconvenience commercial loss, loss of tie, mental agony etc.
6. Loss of any nature due to operation or non-operation is not covered under warranty.
7. All free service are at Dealer's service point only.
8. Warranty ceases if service is not done periodically.
9. The attached card should be completed and returned to Ratnagiri Impex Pvt. Ltd. for registration immediately after sale / delivery.
10. The warranty is void unless you register the warranty card with Ratnagiri Impex Pvt. Ltd.
11. The decision of Ratnagiri Impex Pvt. Ltd., in settling the warranty is final in all respects.
12. All disputes are subject to Bangalore Courts Jurisdiction

1. **LIMITED WARRANTY PERIOD** : For a period of six months from the date of Sale / delivery of the product which ever is earlier. 2. **LIMITED WARRANTY OBLIGATION** : Replacement of defective part(s) by authorized dealer are free of charges. If found defective by reasons of defective material / poor workmanship, parts will be replaced and there will be no value re-imburement. 3. **TERMS & CONDITIONS** : a. Claims under warranty will be accepted on submission of Warranty Card duly filled and stamped by authorized dealer together with the original purchase document. : b. Shipping / transportation / Incidental charges incurred in replacing defective parts under warranty shall be borne by the purchaser.

WARRANTY null & void if

- (i) Lack of maintenance, (ii) Incorrect use of the machine or tampering, (iii) Use of non-genuine spare parts, (iv) Usage of acids, solvents, or any flammable materials, (v) Non-usage of filter water / clear water / soft water & using water above 40°C temperature, (vi) While using the pressure washers to draw water which is contaminated with dust & solvents (eg. paint thinners, gasoline, oil, etc.), (vii) Repair done by unauthorized service people, (viii) Those parts subject to wear & tear due to normal operations and plastic parts, rubber items etc, (ix) Loose connections, faulty electrical fixtures & fluctuations in power supply.
4. Should any failure occur during or after the warranty period, customer does not have the right to interrupt payment / price discount.
5. Incidental or consequential damages like inconvenience commercial loss, loss of tie, mental agony etc.
6. Loss of any nature due to operation or non-operation is not covered under warranty.
7. All free service are at Dealer's service point only.
8. Warranty ceases if service is not done periodically.
9. The attached card should be completed and returned to Ratnagiri Impex Pvt. Ltd. for registration immediately after sale / delivery.
10. The warranty is void unless you register the warranty card with Ratnagiri Impex Pvt. Ltd.
11. The decision of Ratnagiri Impex Pvt. Ltd., in settling the warranty is final in all respects.
12. All disputes are subject to Bangalore Courts Jurisdiction

1. **LIMITED WARRANTY PERIOD** : For a period of six months from the date of Sale / delivery of the product which ever is earlier. 2. **LIMITED WARRANTY OBLIGATION** : Replacement of defective part(s) by authorized dealer are free of charges. If found defective by reasons of defective material / poor workmanship, parts will be replaced and there will be no value re-imburement. 3. **TERMS & CONDITIONS** : a. Claims under warranty will be accepted on submission of Warranty Card duly filled and stamped by authorized dealer together with the original purchase document. : b. Shipping / transportation / Incidental charges incurred in replacing defective parts under warranty shall be borne by the purchaser.

WARRANTY null & void if

- (i) Lack of maintenance, (ii) Incorrect use of the machine or tampering, (iii) Use of non-genuine spare parts, (iv) Usage of acids, solvents, or any flammable materials, (v) Non-usage of filter water / clear water / soft water & using water above 40°C temperature, (vi) While using the pressure washers to draw water which is contaminated with dust & solvents (eg. paint thinners, gasoline, oil, etc.), (vii) Repair done by unauthorized service people, (viii) Those parts subject to wear & tear due to normal operations and plastic parts, rubber items etc, (ix) Loose connections, faulty electrical fixtures & fluctuations in power supply.
4. Should any failure occur during or after the warranty period, customer does not have the right to interrupt payment / price discount.
5. Incidental or consequential damages like inconvenience commercial loss, loss of tie, mental agony etc.
6. Loss of any nature due to operation or non-operation is not covered under warranty.
7. All free service are at Dealer's service point only.
8. Warranty ceases if service is not done periodically.
9. The attached card should be completed and returned to Ratnagiri Impex Pvt. Ltd. for registration immediately after sale / delivery.
10. The warranty is void unless you register the warranty card with Ratnagiri Impex Pvt. Ltd.
11. The decision of Ratnagiri Impex Pvt. Ltd., in settling the warranty is final in all respects.
12. All disputes are subject to Bangalore Courts Jurisdiction



1st Free Service Coupon

ISO 9001-2015
CERTIFIED COMPANY

FREE SERVICE COUPON (30 Days / 30 hrs (Which ever is earlier))

Model
Knapstack Power Sprayer AM-666-NEO 2S AM-708-NEO 2S AM-909-NEO 2S

PDI Date

Serial Number

Service No.

Purchase bill no. Date

Dealer's Office Seal

Dealer Signature.....

Customer Signature.....

Conditions: Operations listed have been performed to my entire satisfaction without any labour charges. Only consumables were charged.



agriculture | horticulture | sericulture | plantations | forestry | garden | health care

WARRANTY AND FREE SERVICE COUPON



2nd Free Service Coupon

ISO 9001-2015
CERTIFIED COMPANY

FREE SERVICE COUPON (30 Days / 60 hrs (Which ever is earlier))

Model
Knapstack Power Sprayer AM-666-NEO 2S AM-708-NEO 2S AM-909-NEO 2S

PDI Date

Serial Number

Service No.

Purchase bill no. Date

Dealer's Office Seal

Dealer Signature.....

Customer Signature.....

Conditions: Operations listed have been performed to my entire satisfaction without any labour charges. Only consumables were charged.



agriculture | horticulture | sericulture | plantations | forestry | garden | health care

WARRANTY AND FREE SERVICE COUPON



3rd Free Service Coupon

ISO 9001-2015
CERTIFIED COMPANY

FREE SERVICE COUPON (90 Days / 120 hrs (Which ever is earlier))

Model
Knapstack Power Sprayer AM-666-NEO 2S AM-708-NEO 2S AM-909-NEO 2S

PDI Date

Serial Number

Service No.

Purchase bill no. Date

Dealer's Office Seal

Dealer Signature.....

Customer Signature.....

Conditions: Operations listed have been performed to my entire satisfaction without any labour charges. Only consumables were charged.

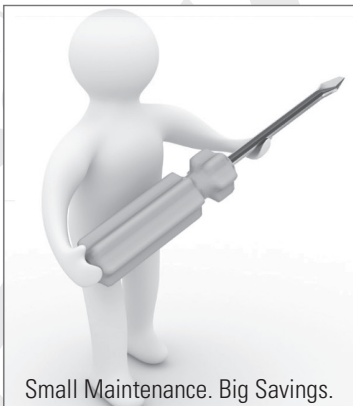


agriculture | horticulture | sericulture | plantations | forestry | garden | health care

WARRANTY AND FREE SERVICE COUPON



Small Maintenance. Big Savings.



Small Maintenance. Big Savings.



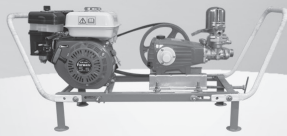
Small Maintenance. Big Savings.

Do's & Don'ts

- Always read the instruction manual supplied along with the equipments and understand the correct installation and operating procedures before attempting to use the equipments.
- It is important to use the personal protection equipments such as head helmet with visor, ear defenders, goggles, safety gloves, cut resistant shoes, trousers and jackets while operating potentially dangerous machines.
- Avoid untrained persons using the equipments. Children must not be allowed to handle these equipments.
- Always use genuine spares and accessories in repairs and usage to derive maximum life of the equipments.
- Always keep the equipments in good working condition to minimise loss of output as well as to reduce the pollution and save the environment.
- Do not use the machine within range of persons unless they wear protective clothing.
- Do not operate the machine when fatigued or under the influence of alcohol or drugs.
- To reduce the risk of injury, close supervision is necessary when a machine is used near children. Equipment shall not be used by children or untrained person.
- Disconnect from the electrical power supply before carrying out user maintenance.

Agrimate Army For Pest Control

ANY WHERE - ANY TIME - ANY CROP




AGRIMATE[®]
Maximum Power - Super Economy

RATNAGIRI IMPEX PVT LTD
Annapurna House, #1/1G, 7th Cross, New Guddadahalli
Mysore Road, Bangalore-560 026
Customer Care: 1800-425-3036
email: info@ratnagiriimpex.com



Marketed by:
ratnagiri[®]
impex
BRINGING YOU THE FUTURE... NOW

www.ratnagiriimpex.com

AN ISO 9001:2015 CERTIFIED COMPANY