

USER MANUAL CROP HARVESTER AM-143-BCH-2S

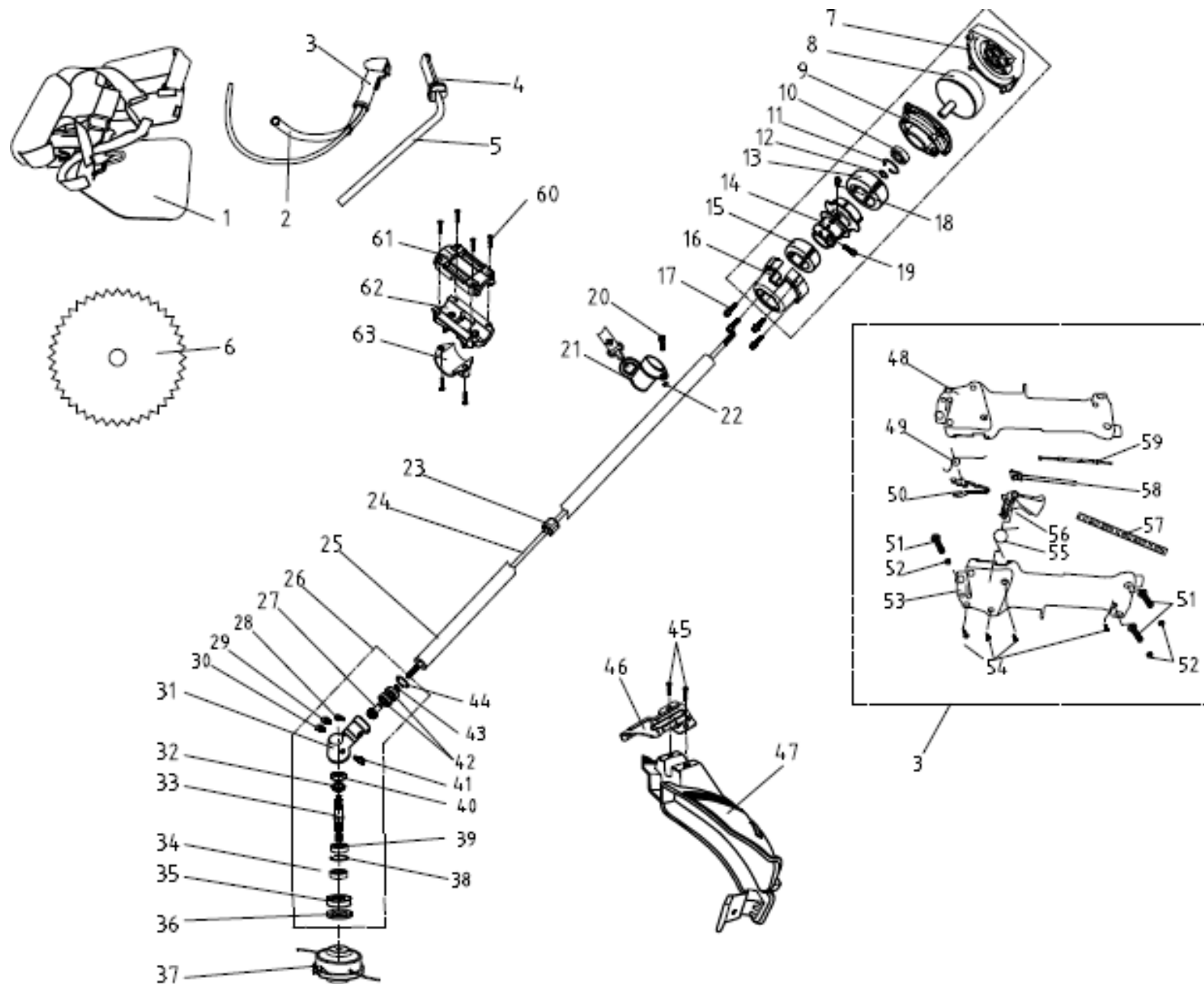


AN ISO 9001 : 2015 CERTIFIED COMPANY

TECHNICAL SPECIFICATIONS

MODEL	AM-143-BCH-2S
POWER	1.6 KW / 2.0HP
DISPLACEMENT	41.5CC
FUEL TANK CAPACITY	1.1LTR

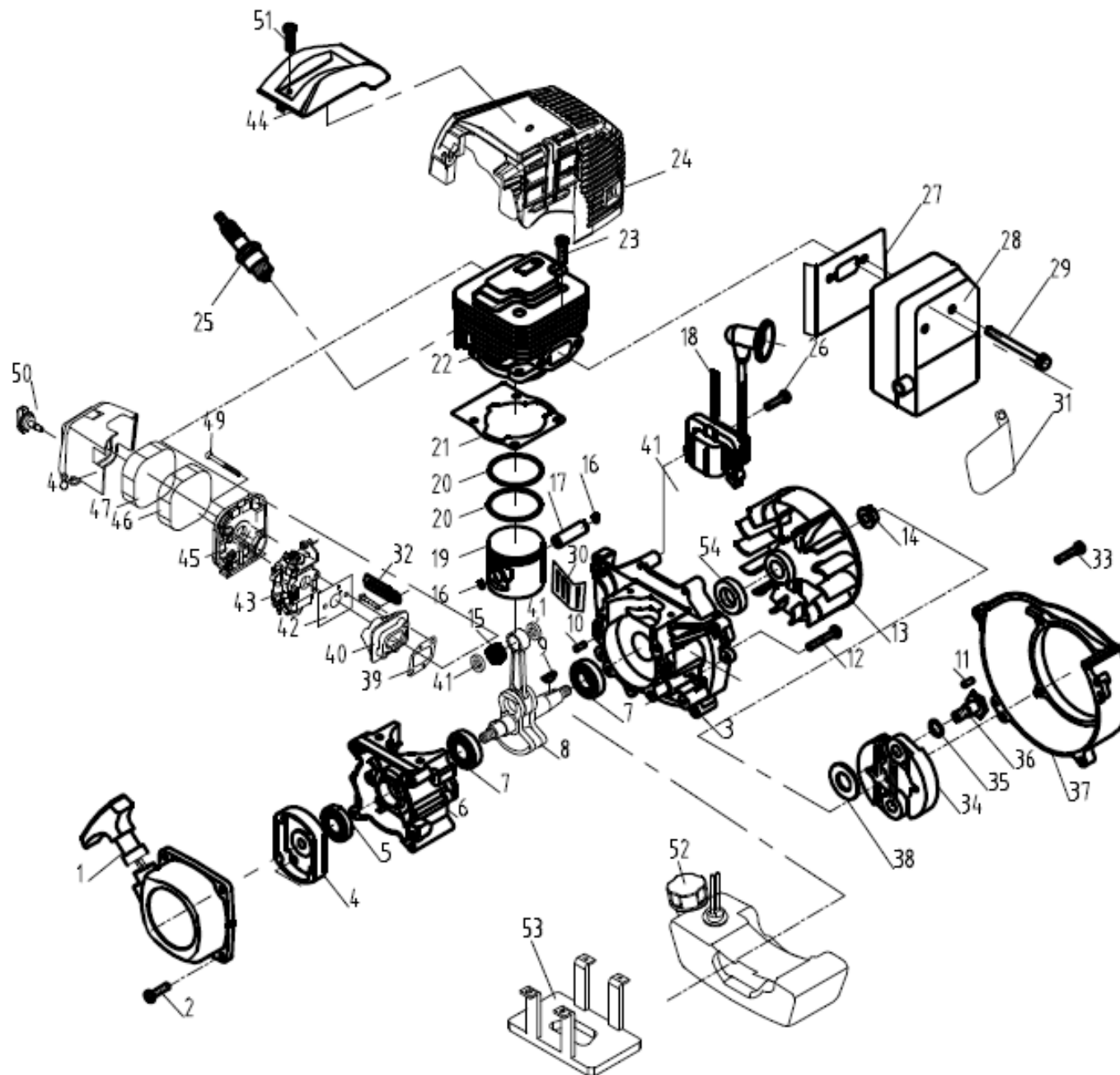
TRANSMISSION DIAGRAM & SPARE PARTS LIST OF AM-143-BCH-2S CROP HARVESTER



SL NO.	PART NUMBER	DESCRIPTION	SL NO.	PART NO.	DESCRIPTION
1	AM-143-BCH-T01	HARNESS	17	AM-143-BCH-T17	SCREW
2	AM-143-BCH-T02	RIGHT HANDLE	18	AM-143-BCH-T18	SCREW
3	AM-143-BCH-T03	LEVER ASS'Y	19	AM-143-BCH-T19	SCREW
4	AM-143-BCH-T04	GRIP	20	AM-143-BCH-T20	SCREW
5	AM-143-BCH-T05	LEFT HANDLE	21	AM-143-BCH-T21	HANG RING ASSY
6	AM-143-BCH-T06	40T BLADE	22	AM-143-BCH-T22	NUT
7	AM-143-BCH-T07	DRUM PROTECTOR	23	AM-143-BCH-T23	OIL-BEARING
8	AM-143-BCH-T08	CLUTCH DRUM COMP	24	AM-143-BCH-T24	DRIVE SHAFT
9	AM-143-BCH-T09	BASE	25	AM-143-BCH-T25	DRIVE SHAFT PIPE
10	AM-143-BCH-T10	BEARING	26	AM-143-BCH-T26	GEAR CASE ASS'Y
11	AM-143-BCH-T11	STOP RING	27	AM-143-BCH-T27	PINION
12	AM-143-BCH-T12	STOP RING	28	AM-143-BCH-T28	SCREW
13	AM-143-BCH-T13	CUSHION BIG	29	AM-143-BCH-T29	SCREW
14	AM-143-BCH-T14	JOINT	30	AM-143-BCH-T30	SCREW
15	AM-143-BCH-T15	CUSHION SMALL	31	AM-143-BCH-T31	GEAR CASE
16	AM-143-BCH-T16	JOINT CAP	32	AM-143-BCH-T32	GEAR

SL NO.	PART NUMBER	DESCRIPTION	SL NO.	PART NO.	DESCRIPTION
33	AM-143-BCH-T33	GEAR SHAFT	49	AM-143-BCH-T49	NA
34	AM-143-BCH-T34	OIL SEAL	50	AM-143-BCH-T50	HANDGRIP
35	AM-143-BCH-T35	CUTTER HOLDER	51	AM-143-BCH-T51	SCREW
36	AM-143-BCH-T36	CUTTER HOLDER CAP	52	AM-143-BCH-T52	NUT
37	AM-143-BCH-T37	NYLON HEAD CUTTER	53	AM-143-BCH-T53	BOX LEFT
38	AM-143-BCH-T38	STOP RING	54	AM-143-BCH-T54	SCREW
39	AM-143-BCH-T39	BEARING	55	AM-143-BCH-T55	SPRING
40	AM-143-BCH-T40	BEARING	56	AM-143-BCH-T56	HANDGRIP
41	AM-143-BCH-T41	SCREW	57	AM-143-BCH-T57	TUBE
42	AM-143-BCH-T42	BEARING	58	AM-143-BCH-T58	STOP BUTTON COMP
43	AM-143-BCH-T43	STOP RING	59	AM-143-BCH-T59	CABLE
44	AM-143-BCH-T44	STOP RING	60	AM-143-BCH-T60	SCREW
45	AM-143-BCH-T45	SCREW	61	AM-143-BCH-T61	UPPER CAP
46	AM-143-BCH-T46	BRACKET	62	AM-143-BCH-T62	BRACKET
47	AM-143-BCH-T47	SAFETY GUARD ASS'Y	63	AM-143-BCH-T63	LOWER CAP
48	AM-143-BCH-T48	RIGHT BOX			

ENGINE DIAGRAM & PARTS LIST OF AM-143-BCH-2S CROP HARVESTER



SL NO.	PART NUMBER	DESCRIPTION	SL NO.	PART NO.	DESCRIPTION
1	AM-G45-E01	RECOIL STARTER ASSY	17	AM-G45-E17	KEY
2	AM-G45-E02	STOPPER	18	AM-G45-E18	PIN
3	AM-G45-E03	KNOB	19	AM-G45-E19	PIN
4	AM-G45-E04	RECOIL SPRING	20	AM-G45-E20	SCREW
5	AM-G45-E05	RECOIL BODY	21	AM-G45-E21	MAGNETO ROTOR
6	AM-G45-E06	RECOIL ROPE	22	AM-G45-E22	NUT
7	AM-G45-E07	RECOIL REEL	23	AM-G45-E23	NEEDLE BEARING
8	AM-G45-E08	WASHER	24	AM-G45-E24	PISTON PIN CIRCLET
9	AM-G45-E09	SCREW	25	AM-G45-E25	PISTON PIN
10	AM-G45-E10	SCREW	26	AM-G45-E26	IGNITION COIL
11	AM-G45-E11	FRONT HALF CRANK CASE	27	AM-G45-E27	PISTON
12	AM-G45-E12	STARTER PULLEY	28	AM-G45-E28	PISTON RING
13	AM-G45-E13	OIL SEAL	29	AM-G45-E29	CYLINDER GASKET
14	AM-G45-E14	REAR HALF CRANK CASE	30	AM-G45-E30	CYLINDER
15	AM-G45-E15	BEARING	31	AM-G45-E31	SCREW
16	AM-G45-E16	CRANK SHAFT COMP.	32	AM-G45-E32	CYLINDER COVER

SL NO.	PART NUMBER	DESCRIPTION	SL NO.	PART NO.	DESCRIPTION
33	AM-G45-E33	SPARK PLUG	49	AM-G45-E49	THRUST WASHER
34	AM-G45-E34	SCREW	50	AM-G45-E50	CARBURETOR GASKET
35	AM-G45-E35	MUFFLER HEAT CUSHION	51	AM-G45-E51	CARBURETOR
36	AM-G45-E36	MUFFLER	52	AM-G45-E52	SPARK PLUG COVER
37	AM-G45-E37	SCREW	53	AM-G45-E53	AIR CLEANER INSIDE COVER
38	AM-G45-E38	SHIELD	54	AM-G45-E54	AIR CLEANER ELEMENT A
39	AM-G45-E39	MUFFLER BAFFLE	55	AM-G45-E55	AIR CLEANER ELEMENT B
40	AM-G45-E40	CLAMP	56	AM-G45-E56	AIR CLEANER OUTSIDE COVER
41	AM-G45-E41	SCREW	57	AM-G45-E57	SCREW
42	AM-G45-E42	CLUTCH SHOE COMP.	58	AM-G45-E58	AIR CLEANER SCREW
43	AM-G45-E43	WASHER	59	AM-G45-E59	SCREW
44	AM-G45-E44	SCREW PIN	60	AM-G45-E60	Fuel Tank ASSY
45	AM-G45-E45	FAN COVER	61	AM-G45-E61	FUEL RETURN PIPE
46	AM-G45-E46	WASHER	62	AM-G45-E62	PLUG
47	AM-G45-E47	ADMITTING PIPE GASKET	63	AM-G45-E63	FUEL SUCTION PIPE
48	AM-G45-E48	ADMITTING PIPE	64	AM-G45-E64	FILTER

SL NO.	PART NUMBER	DESCRIPTION	SL NO.	PART NO.	DESCRIPTION
65	AM-G45-E65	FUEL TANK LID ASSY			
66	AM-G45-E66	FUEL TANK LID			
67	AM-G45-E67	AIR ADMISSION VALVE			
68	AM-G45-E68	INSIDE COVER			
69	AM-G45-E69	AIRPROOF GASKET			
70	AM-G45-E70	SHELL COVER			
71	AM-G45-E71	STOPPER CHAIN			
72	AM-G45-E72	FUEL TANK PROTECTOR			
73	AM-G45-E73	OIL SEAL			
74	AM-G45-E74	CRANK CASE GASKET			

INSPECTION & MAINTAINANCE

For safety use, make sure the machine is cleaned every three months. Before working, make sure to inspect the filter and the nozzle and ensure there is no impurity. After working, make sure there is no water in the pump and the hose.

If the machine needs to be repaired in the guarantee period, please return the machine to the shop. You need to provide the certificate of purchase on order to repair or get the substitute.

Before packing, the machine should be cleaned, then use closed packaging, packaging should be firm. Store the machine in dry place.

For transportation safety. The machine should comply with ISTA.

Do not dispose of electrical machines as unsorted municipal waste, use separate collection facilities.

If electrical machines are disposed of in landfills or dumps, hazardous substances can leak into the ground water and get into the food chain, damaging your health and well being.

When replacing old machines with new ones, the retailer is legally obligated to take back your old machine for disposals at least free of charge.

WARRANTY CARD

CUSTOMER COPY

DATE _____	DATE OF DELIVERY _____	DEALERS OFFICIAL SEAL _____	DEALERS SIGN _____
PURCHASERS NAME & ADDRESS _____ _____ _____	<div>CUSTOMER SIGN</div>	<div></div>	
PRODUCT NAME	PRODUCT SERIAL NO.	INVOICE/DN NO.	
<div></div>	<div></div>	<div></div>	
I/Will accept the terms and conditions of warranty as in the warranty card			

DEALERS COPY

DATE _____	DATE OF DELIVERY _____	DEALERS OFFICIAL SEAL _____	DEALERS SIGN _____
PURCHASERS NAME & ADDRESS _____ _____ _____	<div>CUSTOMER SIGN</div>	<div></div>	
PRODUCT NAME	PRODUCT SERIAL NO.	INVOICE/DN NO.	
<div></div>	<div></div>	<div></div>	
I/Will accept the terms and conditions of warranty as in the warranty card			

COMPANY COPY

DATE _____	DATE OF DELIVERY _____	DEALERS OFFICIAL SEAL _____	DEALERS SIGN _____
PURCHASERS NAME & ADDRESS _____ _____ _____	<div>CUSTOMER SIGN</div>	<div></div>	
PRODUCT NAME	PRODUCT SERIAL NO.	INVOICE/DN NO.	
<div></div>	<div></div>	<div></div>	
I/Will accept the terms and conditions of warranty as in the warranty card			

1. LIMITED WARRANTY PERIOD : For a period of six months from the date of Sale / delivery of the product which ever is earlier. 2. LIMITED WARRANTY OBLIGATION : Replacement of defective part(s) by authorized dealer are free of charges. If found defective by reasons of defective material / poor workmanship, parts will be replaced and there will be no value re-imbursement. 3. TERMS & CONDITIONS : a. Claims under warranty will be accepted on submission of Warranty Card duly filled and stamped by authorized dealer together with the original purchase document. : b. Shipping / transportation / Incidental charges incurred in replacing defective parts under warranty shall be borne by the purchaser

WARRANTY null & void if
(i) Lack of maintenance, (ii) Incorrect use of the machine or tampering, (iii) Use of non-genuine spare parts, (iv) Usage of acids, solvents, or any flammable materials, (v) Non-usage of filter water / clear water / soft water & using water above 40°C temperature, (vi) While using the pressure washers to draw water which is contaminated with dust & solvents (eg. paint thinners, gasoline, oil, etc.), (vii) Repair done by unauthorized service people, (viii) Those parts subject to wear & tear due to normal operations and plastic parts, rubber items etc, (ix) Loose connections, faulty electrical fixtures & fluctuations in power supply.
4. Should any failure occur during or after the warranty period, customer does not have the right to interrupt payment / price discount.
5. Incidental or consequential damages like inconvenience commercial loss, loss of tie, mental agony etc.
6. Loss of any nature due to operation or non-operation is not covered under warranty.
7. All free service are at Dealer's service point only.
8. Warranty ceases if service is not done periodically.
9. The attached card should be completed and returned to Ratnagiri Impex Pvt. Ltd. for registration immediately after sale / delivery.
10. The warranty is void unless you register the warranty card with Ratnagiri Impex Pvt. Ltd.
11. The decision of Ratnagiri Impex Pvt. Ltd., in settling the warranty is final in all respects.
12. All disputes are subject to Bangalore Courts Jurisdiction

1. LIMITED WARRANTY PERIOD : For a period of six months from the date of Sale / delivery of the product which ever is earlier. 2. LIMITED WARRANTY OBLIGATION : Replacement of defective part(s) by authorized dealer are free of charges. If found defective by reasons of defective material / poor workmanship, parts will be replaced and there will be no value re-imbursement. 3. TERMS & CONDITIONS : a. Claims under warranty will be accepted on submission of Warranty Card duly filled and stamped by authorized dealer together with the original purchase document. : b. Shipping / transportation / Incidental charges incurred in replacing defective parts under warranty shall be borne by the purchaser.
WARRANTY null & void if
(i) Lack of maintenance, (ii) Incorrect use of the machine or tampering, (iii) Use of non-genuine spare parts, (iv) Usage of acids, solvents, or any flammable materials, (v) Non-usage of filter water / clear water / soft water & using water above 40°C temperature, (vi) While using the pressure washers to draw water which is contaminated with dust & solvents (eg. paint thinners, gasoline, oil, etc.), (vii) Repair done by unauthorized service people, (viii) Those parts subject to wear & tear due to normal operations and plastic parts, rubber items etc, (ix) Loose connections, faulty electrical fixtures & fluctuations in power supply.
4. Should any failure occur during or after the warranty period, customer does not have the right to interrupt payment / price discount.
5. Incidental or consequential damages like inconvenience commercial loss, loss of tie, mental agony etc.
6. Loss of any nature due to operation or non-operation is not covered under warranty.
7. All free service are at Dealer's service point only.
8. Warranty ceases if service is not done periodically.
9. The attached card should be completed and returned to Ratnagiri Impex Pvt. Ltd. for registration immediately after sale / delivery.
10. The warranty is void unless you register the warranty card with Ratnagiri Impex Pvt. Ltd.
11. The decision of Ratnagiri Impex Pvt. Ltd., in settling the warranty is final in all respects.
12. All disputes are subject to Bangalore Courts Jurisdiction

1. LIMITED WARRANTY PERIOD : For a period of six months from the date of Sale / delivery of the product which ever is earlier. 2. LIMITED WARRANTY OBLIGATION : Replacement of defective part(s) by authorized dealer are free of charges. If found defective by reasons of defective material / poor workmanship, parts will be replaced and there will be no value re-imbursement. 3. TERMS & CONDITIONS : a. Claims under warranty will be accepted on submission of Warranty Card duly filled and stamped by authorized dealer together with the original purchase document. : b. Shipping / transportation / Incidental charges incurred in replacing defective parts under warranty shall be borne by the purchaser.
WARRANTY null & void if
(i) Lack of maintenance, (ii) Incorrect use of the machine or tampering, (iii) Use of non-genuine spare parts, (iv) Usage of acids, solvents, or any flammable materials, (v) Non-usage of filter water / clear water / soft water & using water above 40°C temperature, (vi) While using the pressure washers to draw water which is contaminated with dust & solvents (eg. paint thinners, gasoline, oil, etc.), (vii) Repair done by unauthorized service people, (viii) Those parts subject to wear & tear due to normal operations and plastic parts, rubber items etc, (ix) Loose connections, faulty electrical fixtures & fluctuations in power supply.
4. Should any failure occur during or after the warranty period, customer does not have the right to interrupt payment / price discount.
5. Incidental or consequential damages like inconvenience commercial loss, loss of tie, mental agony etc.
6. Loss of any nature due to operation or non-operation is not covered under warranty.
7. All free service are at Dealer's service point only.
8. Warranty ceases if service is not done periodically.
9. The attached card should be completed and returned to Ratnagiri Impex Pvt. Ltd. for registration immediately after sale / delivery.
10. The warranty is void unless you register the warranty card with Ratnagiri Impex Pvt. Ltd.
11. The decision of Ratnagiri Impex Pvt. Ltd., in settling the warranty is final in all respects.
12. All disputes are subject to Bangalore Courts Jurisdiction

FREE SERVICE COUPON (30DAYS/30HRS. WHICHEVER IS EARLIER)

MODEL		SERIAL NUMBER	
PDI DATE	SERVICE NO.	PURCHASE BILL NO.	DATE
DEALERS OFFICE SEAL	OPERATIONS		
	<div> 1. Check and test the fuel mixture 3. Check , clean and adjust the spark plug 5. Check and sparken the cutting tools 7. Start and check the noise, vibration, loosen etc.. </div> <div> 2. check and clean the air filter 4. Check and adjust the carburetor tuning 6. Product familiarisation on usage 8. Routine maintenance and shortage. </div>		

FREE SERVICE COUPON (30DAYS/30HRS. WHICHEVER IS EARLIER)

MODEL		SERIAL NUMBER	
PDI DATE	SERVICE NO.	PURCHASE BILL NO.	DATE
DEALERS OFFICE SEAL	OPERATIONS		
	<div> 1. Check and test the fuel mixture 3. Check , clean and adjust the spark plug 5. Check and sparken the cutting tools 7. Start and check the noise, vibration, loosen etc.. </div> <div> 2. check and clean the air filter 4. Check and adjust the carburetor tuning 6. Product familiarisation on usage 8. Routine maintenance and shortage. </div>		

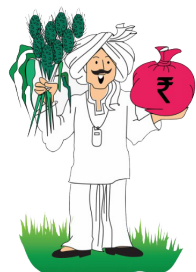
FREE SERVICE COUPON (30DAYS/30HRS. WHICHEVER IS EARLIER)

MODEL		SERIAL NUMBER	
PDI DATE	SERVICE NO.	PURCHASE BILL NO.	DATE
DEALERS OFFICE SEAL	OPERATIONS		
	<div> 1. Check and test the fuel mixture 3. Check , clean and adjust the spark plug 5. Check and sparken the cutting tools 7. Start and check the noise, vibration, loosen etc.. </div> <div> 2. check and clean the air filter 4. Check and adjust the carburetor tuning 6. Product familiarisation on usage 8. Routine maintenance and shortage. </div>		

DOS & DONTs

1. Always read the instruction manual supplied along with the equipments and understand the correct installation and operating procedures before attempting to use the equipments.
2. It is important to use the personal protection equipments such as head helmet with visor, ear defenders, goggles, safety gloves, cut resistant shoes, trousers and jackets while operating potentially dangerous machines
3. Avoid untrained persons using the equipments. Children must not be allowed to handle these equipments
4. Always use genuine spares and accessories in repairs and usage to derive maximum life of the equipments.
5. Always keep the equipments in good working condition to minimize loss of output as well as to reduce the pollution and save the environment
6. Do not use the machine within range of persons unless they wear protective clothing
7. Do not operate the machine when fatigued or under the influence of alcohol or drugs
8. When the machine is running, please maintain a constant water supply. Without water circulation will damage the sealing rings of the machine.
9. For more query kindly contact for our Service Center/Dealer/ franchise

AGRIMATE MULTI PURPOSE EQUIPMENT ANYWHERE - ANYTIME - ANY CROP



**ratnagiri[®]
impeX**

BRINGING YOU THE FUTURE... NOW

IMPORTED & MARKETING BY,
RATNAGIRI IMPEX PVT., LTD.,

**Annapurna House, #1 / 1G, 7th Cross, New
Guddadahalli Mysore Road, Bangalore - 560 026
Missed Call : 7393 938 938 Email: ask@agrimart.in**