

**HTP POWER SPRAYER WITH ENGINE  
AM-21K WITH AM-152 ENGINE**



Before Operating this machine please read instructions Manual carefully

**Disclaimer:** Due to Constant upgradation, features & Specifications are subject to change without prio notice



Dear Sir/Madam,

Thank you for choosing Agrimate product. You are the proud owner of high technology and durable machine. Trust that our franchisee/dealer installed the product and explained you about the usage and service instructions. Please visit our authorised dealer for you future requirement of our other equipments, genuine spares, accessories and service. Service coupons are attached with this manual and you can avail free service.

About Ratnagiri

We import and market of high quality of agriculture wide range of equipment's Which we are selling through our authorized franchisee or dealer network. We are in this field from past 20 years serving the former community. For further details, you may please visit our website

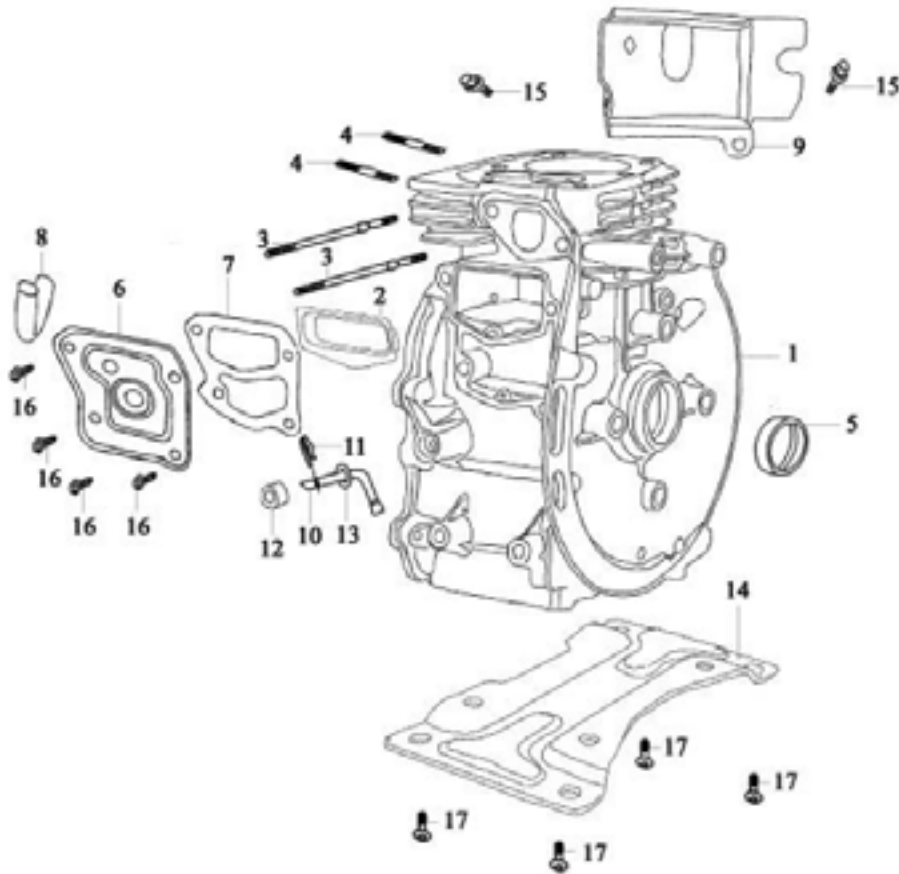
**[www.agrimart.in](http://www.agrimart.in)**

## TECHNICAL SPECIFICATIONS

<b>Model</b>	<b>AM-21K WITH 152eENGINE</b>
<b>Engine</b>	<b>AM-152E</b>
<b>Type</b>	<b>Single-cylinder, 4-stroke, OHV air-forced cooling</b>
<b>Start</b>	<b>Recoil</b>
<b>Displacement (CC)</b>	<b>98CC</b>
<b>Max. Power KW(HP)/RPM</b>	<b>2.2KW/3.0HP/3600RPM</b>
<b>Fuel Tank Capacity</b>	<b>1.3LTR</b>
<b>Oil Capacity</b>	<b>0.3LTR</b>
<b>Net Weight KG</b>	<b>8.5</b>
<b>Gross Weight KG</b>	<b>10</b>

# ENGINE DIAGRAM & PART LIST OF AM-21K HTP POWER SPRYARE WITH ENGINE

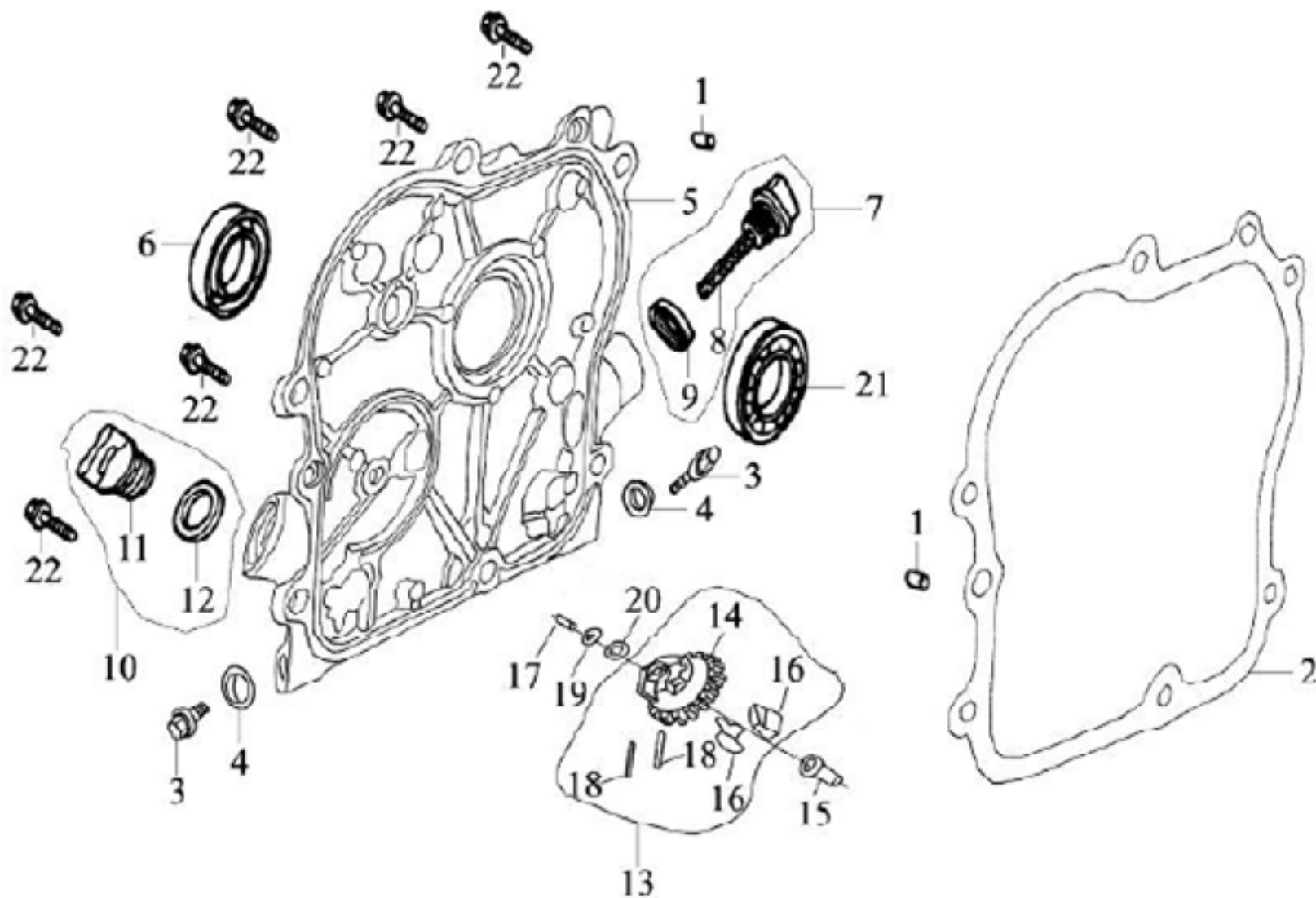
## CRANKCASE ASSY - A



SL NO	PART NO.	DESCRIPTION
1	AM-152PE-A01	Crankcase
2	AM-152PE-A02	Valve chamber clapboard sub-assy
3	AM-152PE-A03	Stud
4	AM-152PE-A04	Oil seal crankshaft
5	AM-152PE-A05	Cover, oil filter
6	AM-152PE-A06	Gasket
7	AM-152PE-A07	Return Pipe
8	AM-152PE-A08	Flow guard, lower
9	AM-152PE-A09	sway bar
10	AM-152PE-A10	Keeper, sway bar
11	AM-152PE-A11	Oil seal, sway bar
12	AM-152PE-A12	Washer, sway bar
13	AM-152PE-A13	Bottom plate
14	AM-152PE-A14	Bolt
15	AM-152PE-A15	Bolt
16	AM-152PE-A16	Bolt

# ENGINE DIAGRAM & PART LIST OF AM-21K HTP POWER SPRYARE WITH ENGINE

## CRANKCASE COVER ASSY - B

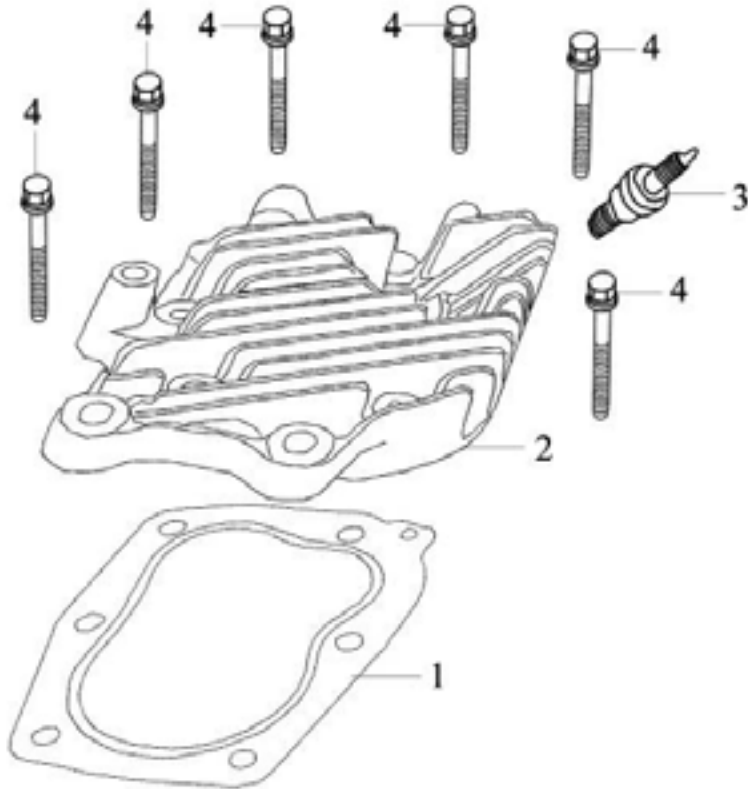


# ENGINE DIAGRAM & PART LIST OF AM-21K HTP POWER SPRYARE WITH ENGINE

SL NO	PART NO	DESCRIPTION	SL NO	PART NO	DESCRIPITON
1	AM-152PE-B01	Set pin	17	AM-152PE-B17	Governing shaft
2	AM-152PE-B02	Gasket, crankcase	18	AM-152PE-B18	Pin, flyweight
3	AM-152PE-B03	Drain plug	19	AM-152PE-B19	Snap ring
4	AM-152PE-B04	Drain plug	20	AM-152PE-B20	Washer, driven gear
5	AM-152PE-B05	Washer	21	AM-152PE-B21	Bearing
6	AM-152PE-B06	Crankcase cover	22	AM-152PE-B22	Bolt
7	AM-152PE-B07	Oil seal crankshaft			
8	AM-152PE-B08	Dipstick sub-assy			
9	AM-152PE-B09	Dipstick			
10	AM-152PE-B10	Seal, dipstick			
11	AM-152PE-B11	Oil plug sub-assy			
12	AM-152PE-B12	Seal, oil plug			
13	AM-152PE-B13	Driven gear sub-assy, governor			
14	AM-152PE-B14	Driven gear, governor			
15	AM-152PE-B15	Sliding sleeve			
16	AM-152PE-B16	Flyweight			

# ENGINE DIAGRAM & PART LIST OF AM-21KHTP POWER SPRYARE WITH ENGINE

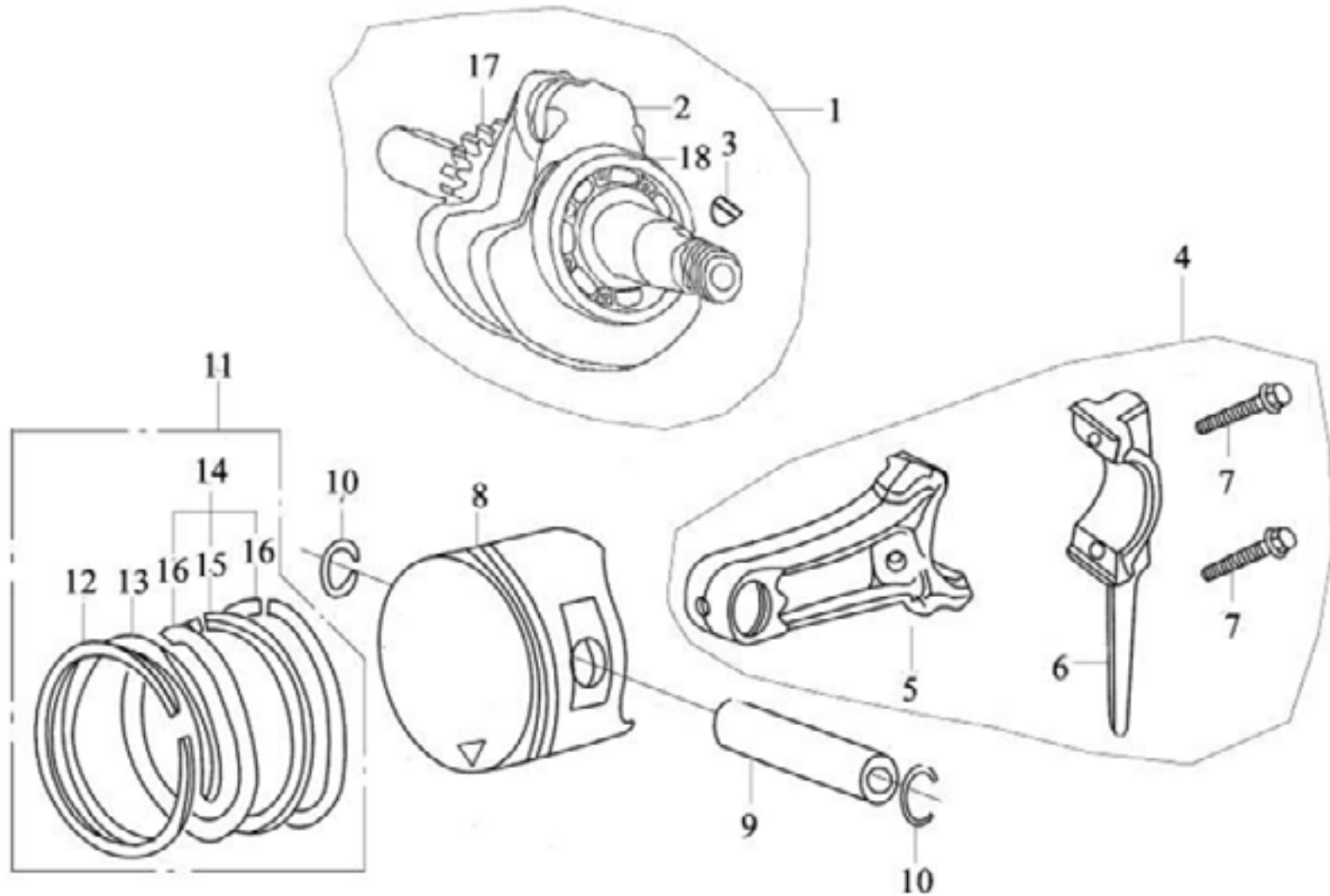
## CYLINDER COVER - C



SL NO	PART NO	DESCRIPTION
1	AM-152PE-C01	Gasket, cylinder head
2	AM-152PE-C02	Cylinder cover
3	AM-152PE-C03	Spark plug
4	AM-152PE-C04	Bolt

# ENGINE DIAGRAM & PART LIST OF AM-21K HTP POWER SPRYARE WITH ENGINE

## CRANKSHAFT, PISTON & CONNECTING ROD - D



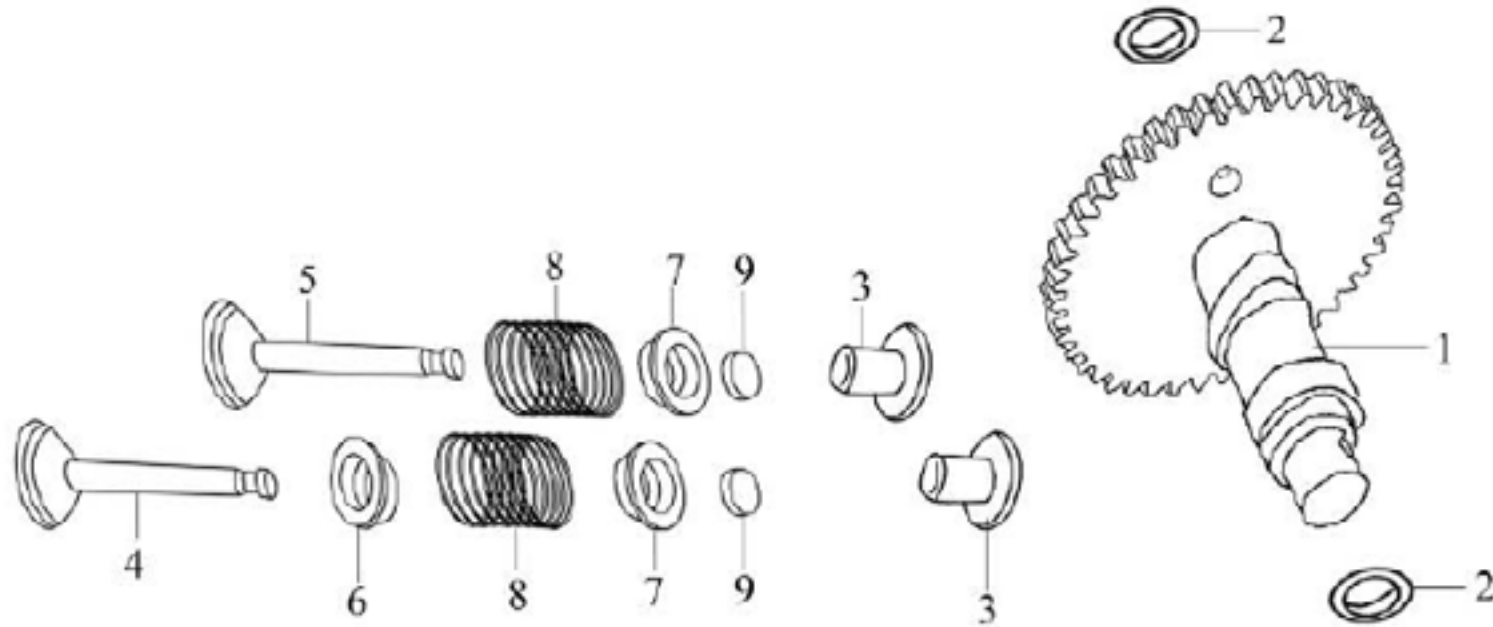


# ENGINE DIAGRAM & PART LIST OF AM-21K HTP POWER SPRYARE WITH ENGINE

SL NO	PART NO	DESCRIPTION	SL NO	PART NO	DESCRIPITON
1	AM-152PE-D01	Crankshaft sub-assy	12	AM-152PE-D12	Piston ring (I)
2	AM-152PE-D02	Crankshaft	13	AM-152PE-D13	Piston ring (II)
3	AM-152PE-D03	Woodruff key	14	AM-152PE-D14	Oil ring, 3-piece
4	AM-152PE-D04	Connecting rod	15	AM-152PE-D15	Expander
5	AM-152PE-D05	Shank	16	AM-152PE-D16	Side rail
6	AM-152PE-D06	Cap connecting rod	17	AM-152PE-D17	Timing driving gear
7	AM-152PE-D07	Bolt	18	AM-152PE-D18	Bearing
8	AM-152PE-D08	Piston			
9	AM-152PE-D09	Piston pin			
10	AM-152PE-D10	Circlip, piston pin			
11	AM-152PE-D11	Piston ring set			

# ENGINE DIAGRAM & PART LIST OF AM-21K HTP POWER SPRYARE WITH ENGINE

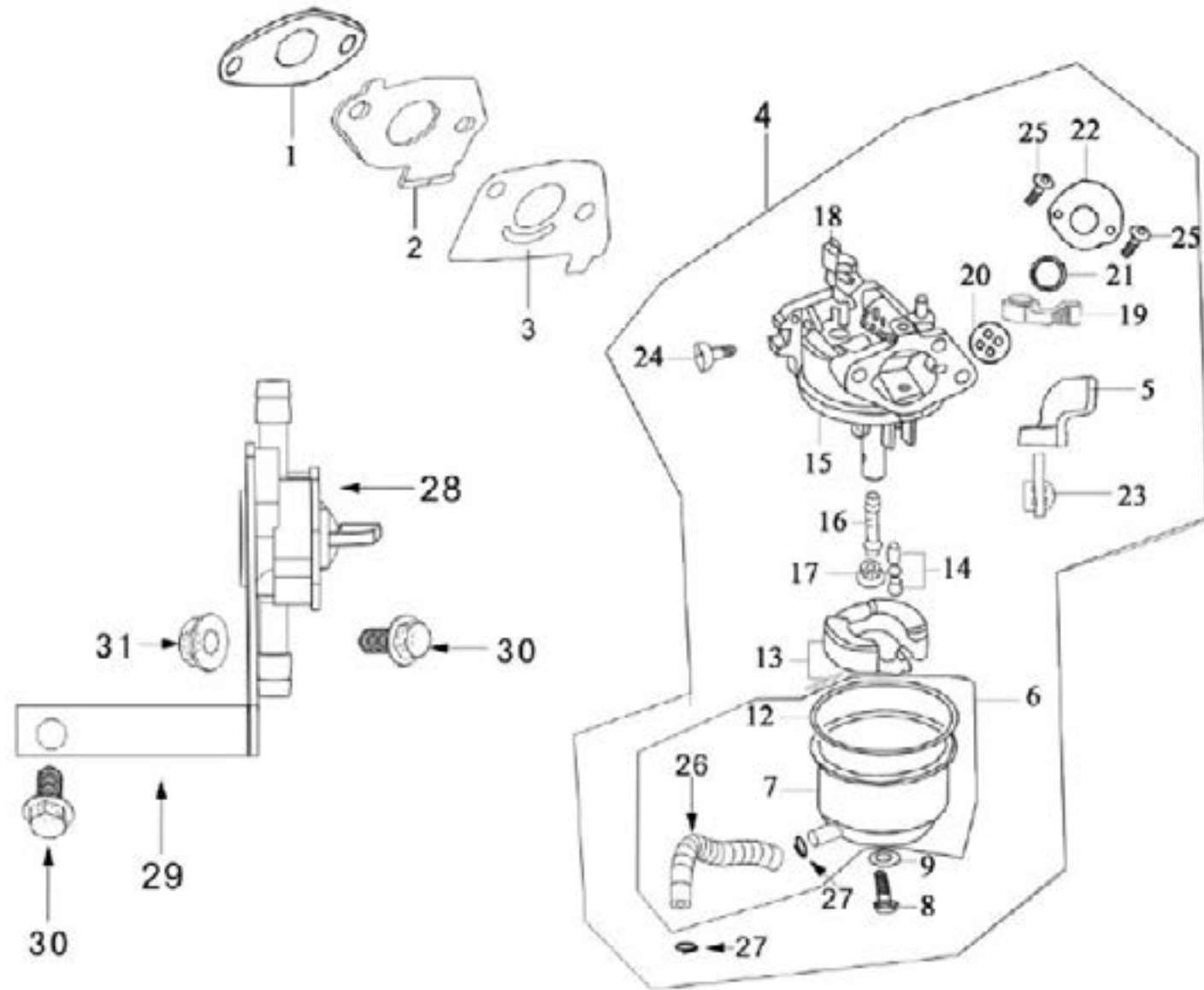
## COMBINATION OF CAMSHAFT VALVE -E



SL NO	PART NO	DESCRIPTION	SL NO	PART NO	DESCRIPITON
1	AM-152PE-E01	Camshaft	6	AM-152PE-E06	Oil seal, valve stem
2	AM-152PE-E02	Washer, camshaft	7	AM-152PE-E07	Spring seat, valve
3	AM-152PE-E03	Tappet	8	AM-152PE-E08	Valve spring
4	AM-152PE-E04	Intake valve	9	AM-152PE-E09	Cap
5	AM-152PE-E05	Exhaust valve			

# ENGINE DIAGRAM & PART LIST OF AM-21K HTP POWER SPRYARE WITH ENGINE

## CARBURETOR ASSY - F

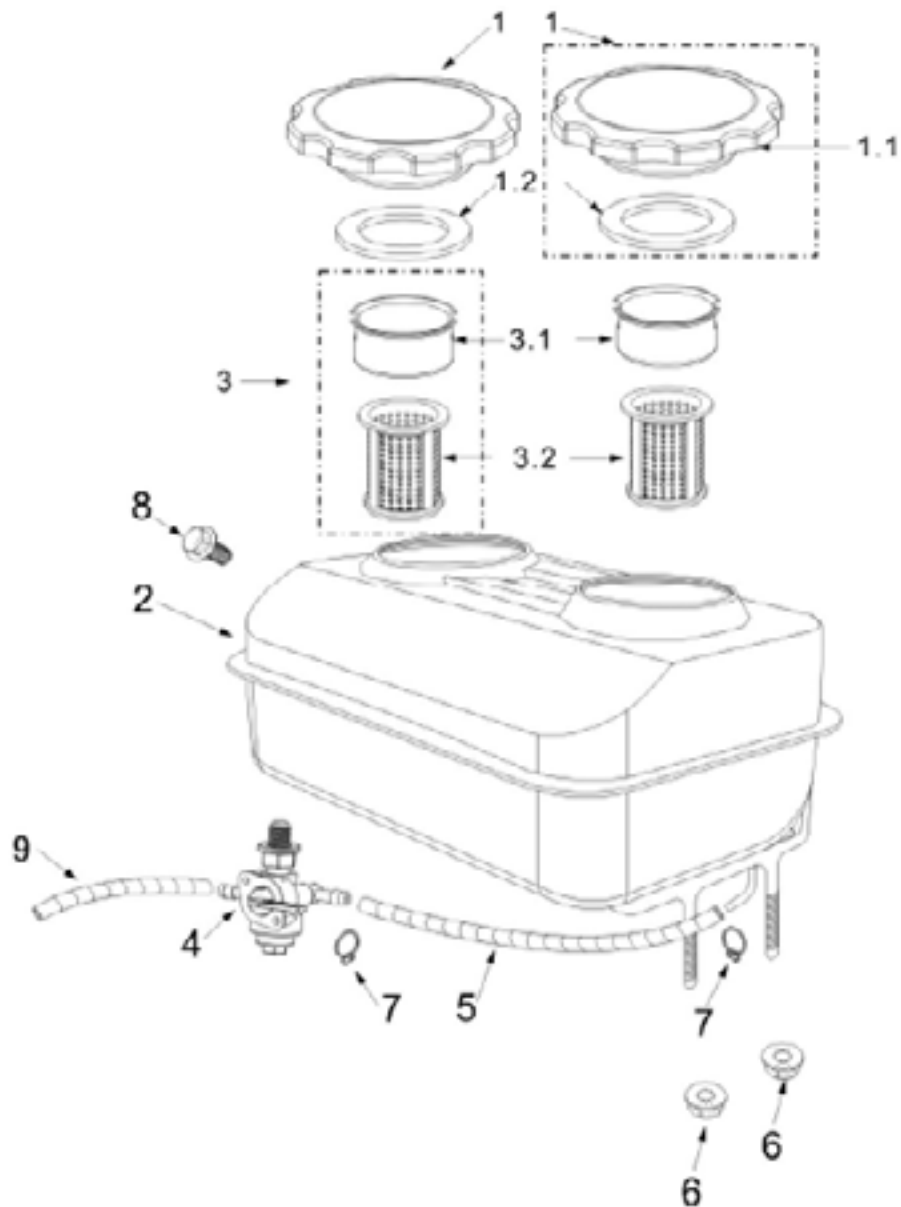


# ENGINE DIAGRAM & PART LIST OF AM-21K HTP POWER SPRYARE WITH ENGINE

SL NO	PART NO	DESCRIPTION	SL NO	PART NO	DESCRIPITON
1	AM-152PE-F01	Gasket, intake port	17	AM-152PE-F17	Main jet
2	AM-152PE-F02	Connecting block	18	AM-152PE-F18	Throttle unit
3	AM-152PE-F03	Gasket, carburetor	19	AM-152PE-F19	Throttle lever
4	AM-152PE-F04	Carburetor assy	20	AM-152PE-F20	Airproof washer
5	AM-152PE-F05	Choke lever	21	AM-152PE-F21	Washer
6	AM-152PE-F06	Float chamber sub-assy	22	AM-152PE-F22	Cover
7	AM-152PE-F07	Float chamber	23	AM-152PE-F23	NA
8	AM-152PE-F08	Screw	24	AM-152PE-F24	Idle adjusting screw
9	AM-152PE-F09	Seal, screw	25	AM-152PE-F25	Screw
10	AM-152PE-F10	NA	26	AM-152PE-F26	Tubing
11	AM-152PE-F11	NA	27	AM-152PE-F27	Pipe clamp
12	AM-152PE-F12	Gasket, float chamber	28	AM-152PE-F28	Oil switch
13	AM-152PE-F13	Float sub-assy	29	AM-152PE-F29	A mounting block
14	AM-152PE-F14	Needle valve	30	AM-152PE-F30	Bolt
15	AM-152PE-F15	Mixture chamber body	31	AM-152PE-F31	Nut
16	AM-152PE-F16	Main nozzle			

# ENGINE DIAGRAM & PART LIST OF AM-21K HTP POWER SPRYARE WITH ENGINE

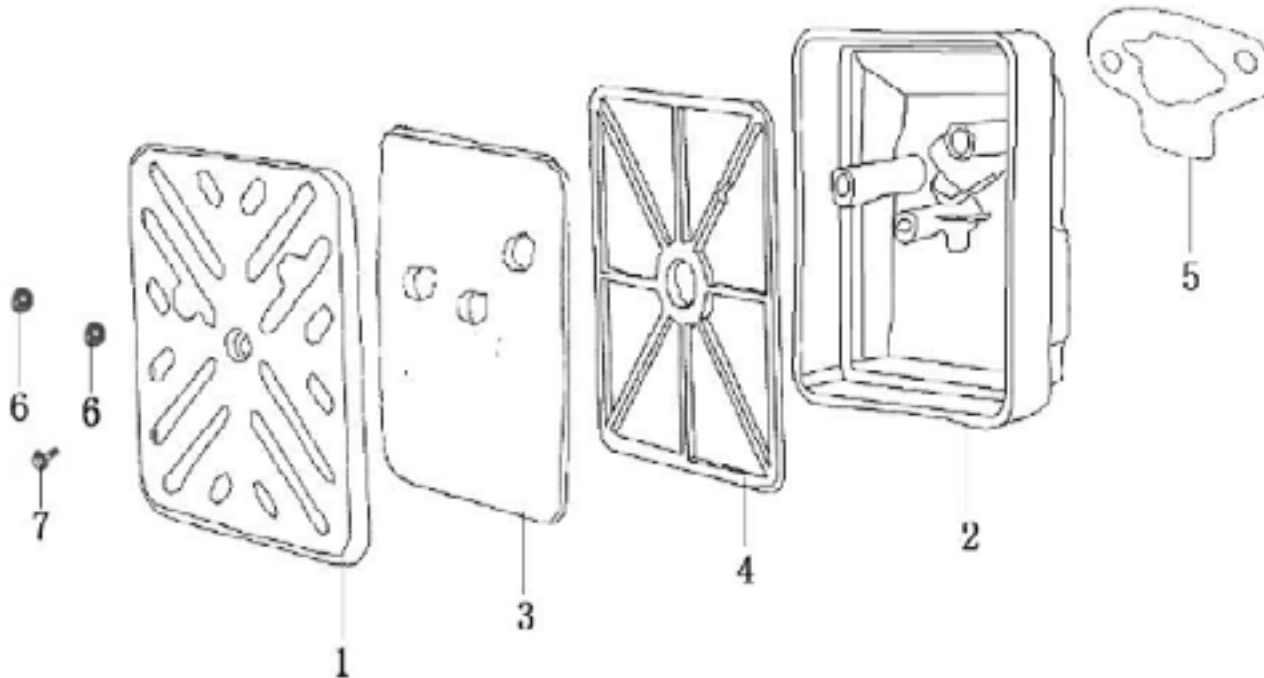
## FUEL TANK ASSY - G



SL NO	PART NO	DESCRIPTION
1	AM-152PG-G01	Fuel filler cap sub-assy
1.1	AM-152PG-G02	Fuel filler cap
1.2	AM-152PG-G03	Packing ring
2	AM-152PG-G04	Fuel tank
3	AM-152PG-G05	Filter cup
4	AM-152PG-G06	Oil switch
5	AM-152PG-G07	Tubing
6	AM-152PG-G08	Nut M6
7	AM-152PG-G09	Pipe clamp
8	AM-152PG-G10	Bolt
9	AM-152PG-G11	Tubing

# ENGINE DIAGRAM & PART LIST OF AM-21K HTP POWER SPRYARE WITH ENGINE

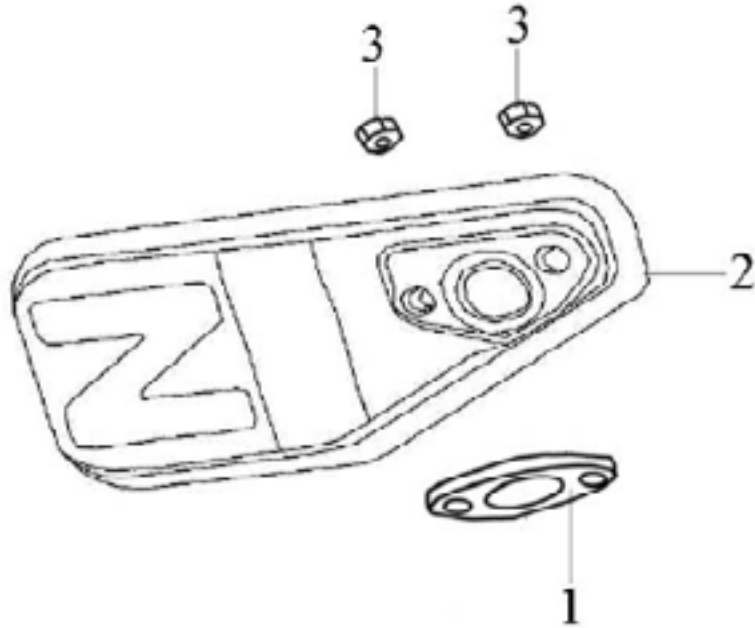
## AIR CLEANER ASSY - H



SL NO	PART NO	DESCRIPTION	SL NO	PART NO	DESCRIPITON
1	AM-152PE-H01	Cover, air cleaner	5	AM-152PE-H05	Gasket, air cleaner
2	AM-152PE-H02	Housing, air cleaner	6	AM-152PE-H06	Nut
3	AM-152PE-H03	Foam, air cleaner	7	AM-152PE-H07	Self-tapping screw
4	AM-152PE-H04	Bracket, air cleaner			

# ENGINE DIAGRAM & PART LIST OF AM-21K HTP POWER SPRYARE WITH ENGINE

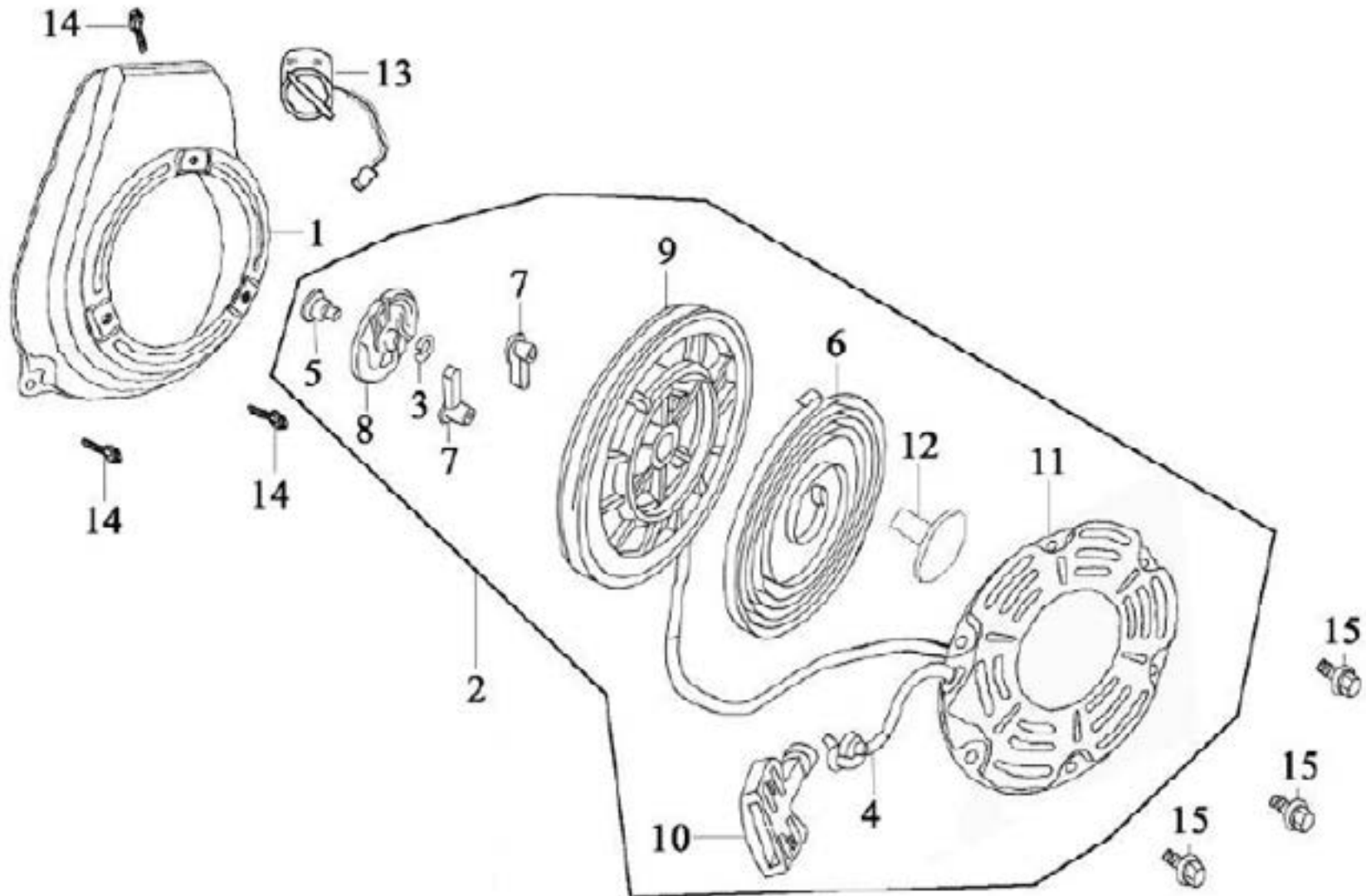
## MUFFLER - J



SL NO	PART NO	DESCRIPTION
1	AM-152PE-J01	Gasket, exhaust port
2	AM-152PE-J02	Exhaust muffler
3	AM-152PE-J03	Nut

# ENGINE DIAGRAM & PART LIST OF AM-21K HTP POWER SPRAYER WITH ENGINE

## RECOIL STARTER - K



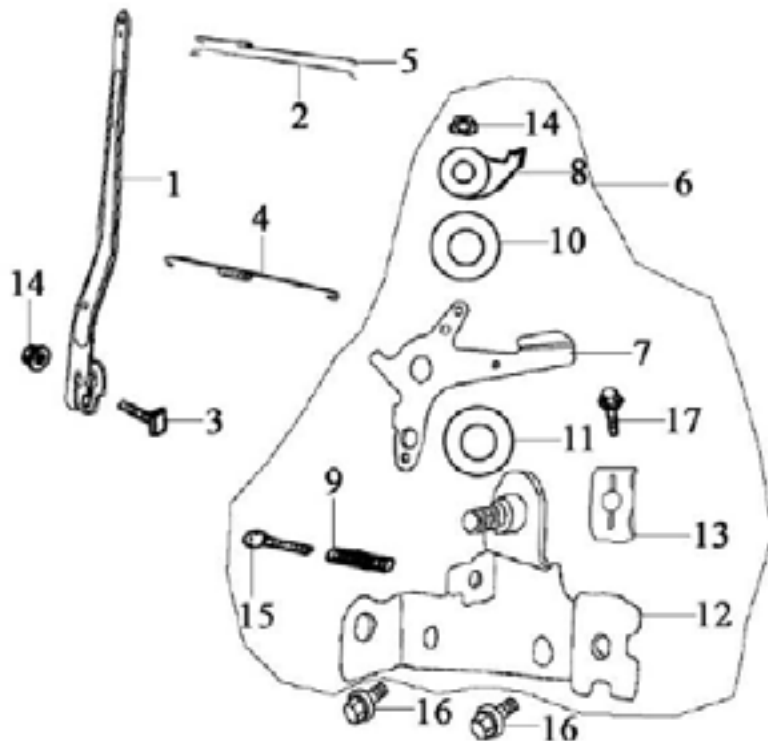


# ENGINE DIAGRAM & PART LIST OF AM-21K HTP POWER SPRYARE WITH ENGINE

SL NO	PART NO	DESCRIPTION	SL NO	PART NO	DESCRIPITON
1	AM-152PE-K01	Fan hood sub-assy	11	AM-152PE-K11	Casing
2	AM-152PE-K02	Recoil starter	12	AM-152PE-K12	Spring seat
3	AM-152PE-K03	Friction spring	13	AM-152PE-K13	Engine switch
4	AM-152PE-K04	Rope	14	AM-152PE-K14	Bolt
5	AM-152PE-K05	Shoulder screw	15	AM-152PE-K15	Bolt
6	AM-152PE-K06	Spiral spring			
7	AM-152PE-K07	Ratchet			
8	AM-152PE-K08	Lid, spring			
9	AM-152PE-K09	Spool, starter			
10	AM-152PE-K10	Grip, starter			

# ENGINE DIAGRAM & PART LIST OF AM-21K HTP POWER SPRYARE WITH ENGINE

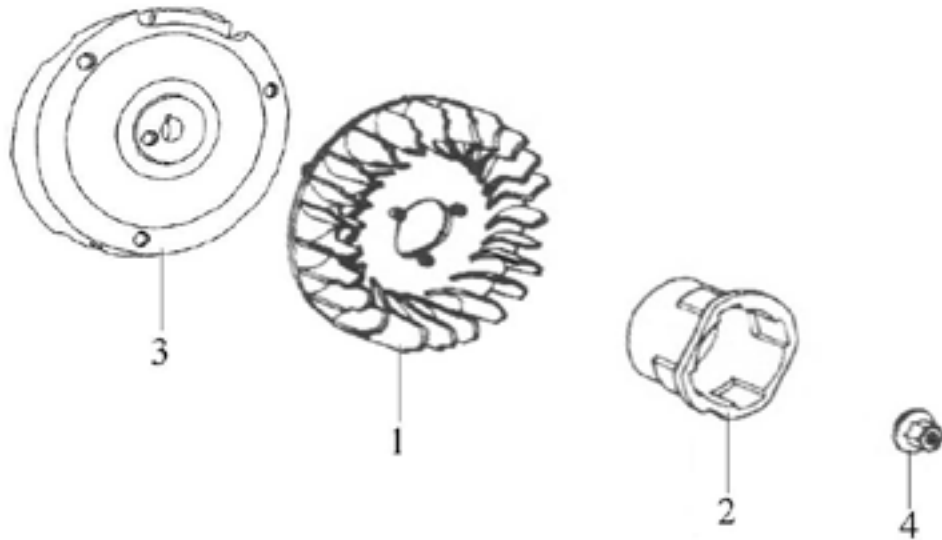
## GOVERNING CONTROL SYSTEM - L



SL NO	PART NO	DESCRIPTION
1	AM-152PE-L01	Governor arm
2	AM-152PE-L02	Pull-rod, governor
3	AM-152PE-L03	Lock bolt
4	AM-152PE-L04	Return spring
5	AM-152PE-L05	Assistant spring, governor
6	AM-152PE-L06	Mount, governor
7	AM-152PE-L07	Handle
8	AM-152PE-L08	Positioning plate
9	AM-152PE-L09	Spring, governor
10	AM-152PE-L10	Wave washer
11	AM-152PE-L11	Washer
12	AM-152PE-L12	Supporting plate unit
13	AM-152PE-L13	Pressure plate
14	AM-152PE-L14	Nut
15	AM-152PE-L15	Bolt
16	AM-152PE-L16	Bolt
17	AM-152PE-L17	Bolt

# ENGINE DIAGRAM & PART LIST OF AM-21K HTP POWER SPRYARE WITH ENGINE

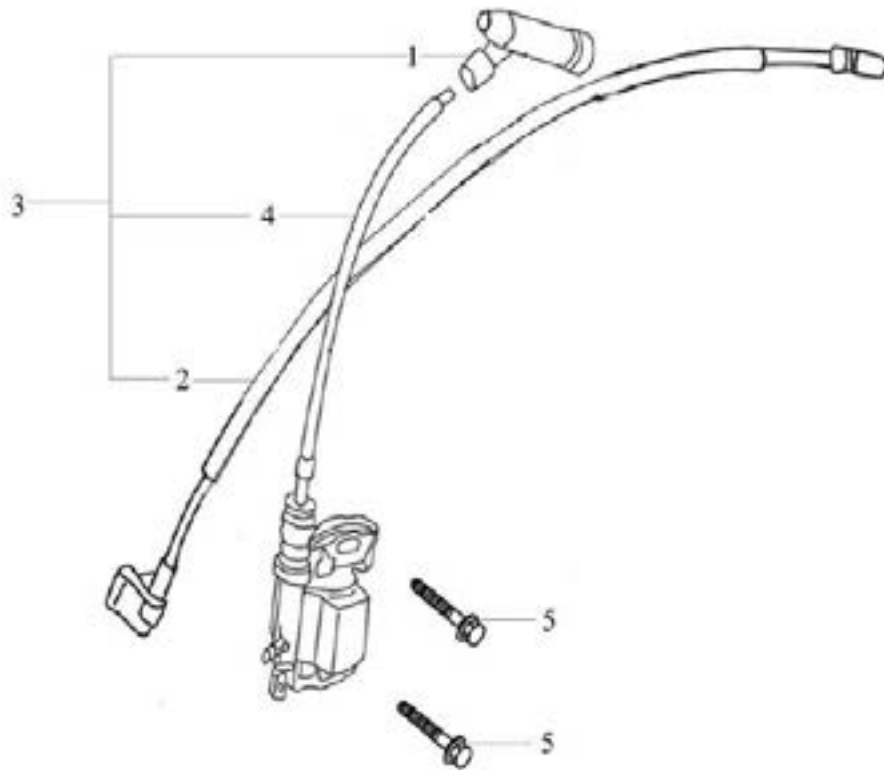
## FLYWHEEL - M



SL NO	PART NO	DESCRIPTION
1	AM-152PE-M01	Fan, flywheel
2	AM-152PE-M02	Starting flange
3	AM-152PE-M03	Flywheel
4	AM-152PE-M04	Nut

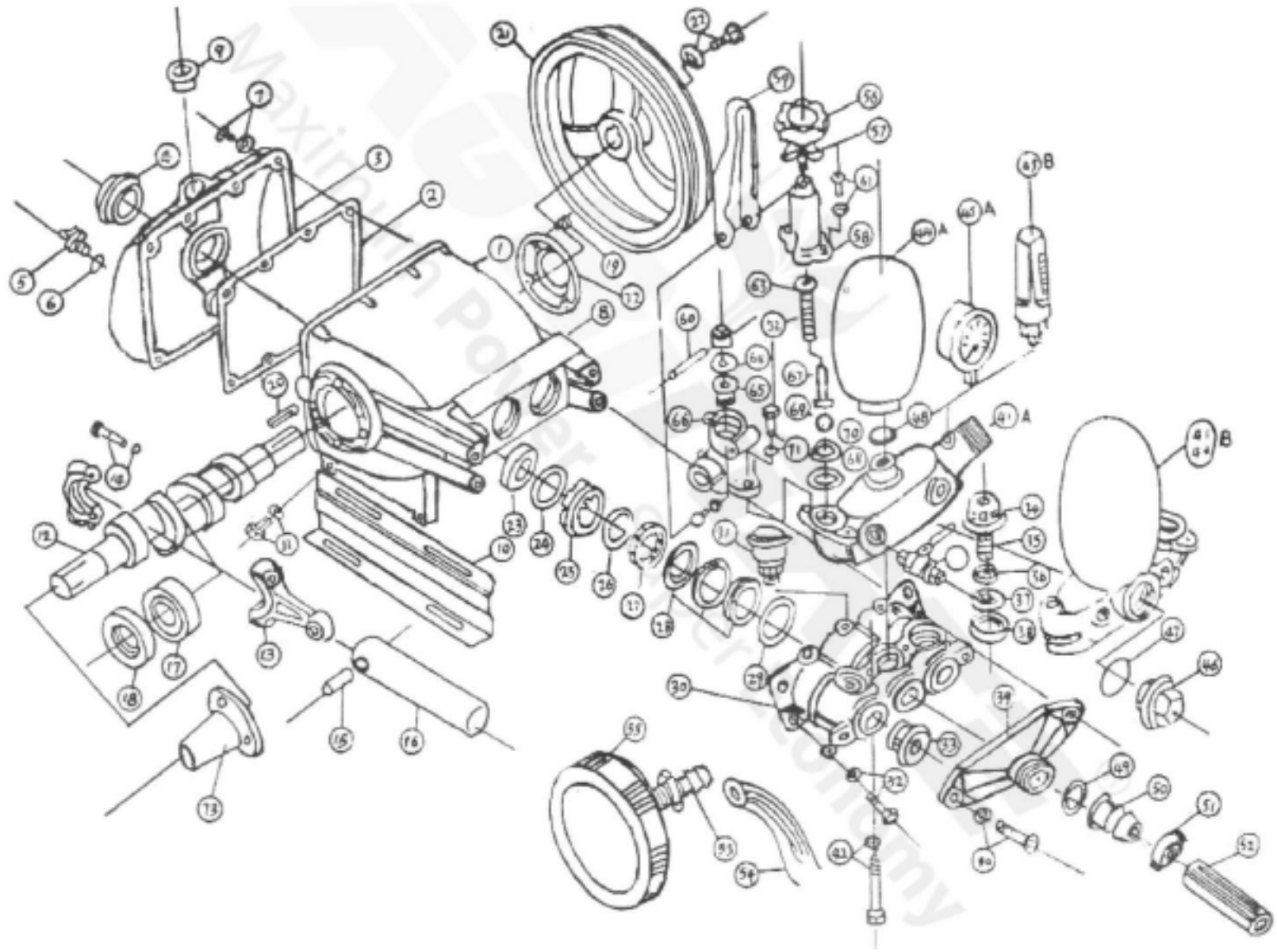
# ENGINE DIAGRAM & PART LIST OF AM-21K HTP POWER SPRYARE WITH ENGINE

## IGNITION COIL - N



SL NO	PART NO	DESCRIPTION
1	AM-152PE-N01	Cap, spark plug
2	AM-152PE-N02	Cable, engine stop
3	AM-152PE-N03	Ignition coil sub-assy
4	AM-152PE-N04	Ignition coil
5	AM-152PE-N05	Bolt

# PUMP DIAGRAM & PART LIST OF AM-21K HTP POWER SPRYARE WITH ENGINE



# PUMP DIAGRAM & PART LIST OF AM-21K HTP POWER SPRYARE WITH ENGINE

SL. NO.	PART NUMBER	DESCRIPTION	SL. NO.	PART NUMBER	DESCRIPTION
1	AM-21K-1	Crank Case	17	AM-21K-17	Bearing
2	AM-21K-2	Gasket Crank Case	18	AM-21K-1s	Oil Seal crank Shaft
3	AM-21K-3	Cover Crank Case	19	AM-21K-19	Bolt
4	AM-21K-4	Oil Gauge	20	AM-21K-20	Key
5	AM-21K-5	Plug Drain	21	AM-21K-21	Pulley
6	AM-21K-6	O Ring	22	AM-21K-22	Bolt
7	AM-21K-7	Screw	23	AM-21K-23	Oil Seal Plunger
8	AM-21K-8	Plunger Cover	24	AM-21K-24	Stopping Ring Water
9	AM-21K-9	Plug	25	AM-21K-25	Grand
10	AM-21K-10	Red Crank Case	26	AM-21K-26	Crease Seal
11	AM-21K-11	Bolt Washer Spring	27	AM-21K-27	Crease Ring
12	AT-21K-12	Crank Shaft	28	AM-21K-28	V Packing
13	AM-21K-13	Connecting Rod	29	AM-21K-29	V Packing seat
14	AM-21K-14	Bolt Washer Spring	30	AM-21K-30K	Cylinder
15	AM-21K-15	Plunger Pin	31	AM-21K-31	Grease Cup
16	AM-21K-16	Plunger	32	AM-21K-32	Bolt Wahser Spring

# PUMP DIAGRAM & PART LIST OF AM-21K HTP POWER SPRYARE WITH ENGINE

SL. NO.	PART NUMBER	DESCRIPTION	SL. NO.	PART NUMBER	DESCRIPTION
33	AM-21K-33	Valve Assy	49	AM-21K-49	Packing
34	AM-21K-34	Valve Box	50	AM-21K-50	Core Coupling
35	AM-21K-35	Valve Spring	51	AM-21K-51	Coupling
36	AM-21K-36	Valve Flat	52	AM-21K-52	P.V.C Hose
37	AM-21K-37	Valve Seat	53	AM-21K-53	Core Strainer
38	AM-21K-38	Valve Seal	54	AM-21K-54	P.V.C Hose
39	AM-21K-39	Suction Metal	55	AM-21K-55	Strainer Assy
40	AM-21K-40	Bolt Washer Spring	56	AM-21K-56	Screw
41	AM-21K-41	Discharge Metal	57	AM-21K-57	Fly Nut
42	AM-21K-42	Bolt Washer Spring	58	AM-21K-58	Spring Box
43	AM-21K-43	Cock	59	AM-21K-59	Knob Control
44	AM-21K-44	Air Chamber	60	AM-21K-60	Pin
45	AM-21K-45	Pressure Gauge	61	AM-21K-61	Bolt Wahser Spring
46	AM-21K-46	Bolt Wahser Spring	62	AM-21K-62	Spring Box
47	AM-21K-47	O-Ring	63	AM-21K-63	Upper Metal
48	AM-21K-48	O-Ring	64	AM-21K-64	Packing






# PUMP DIAGRAM & PART LIST OF AM-21K HTP POWER SPRYARE WITH ENGINE

SL. NO.	PART NUMBER	DESCRIPTION	SL. NO.	PART NUMBER	DESCRIPTION
65	AM-21K-65	Oil Seal			
66	AM-21K-66	Body Over Flow			
67	AM-21K-67	Spindle			
68	AM-21K-68	Valve			
69	AM-21K-69	O-Ring			
70	AM-21K-70	valve Seat			
71	AM-21K-71	Bolt Washer Spring			
72	AM-21K-72	Cover Oil Seal			
73	AM-21K-73	Cover Oil Seal			
74	AM-21K-74	Cover Oil Seal			



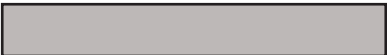




# WARRANTY CARD

## CUSTOMER COPY

DATE _____	DATE OF DELIVERY _____	DEALERS OFFICIAL SEAL	DEALERS SIGN _____
PURCHASERS NAME & ADDRESS _____ _____	 CUSTOMER SIGN		
PRODUCT NAME	PRODUCT SERIAL NO.	INVOICE/DN NO.	
			






I/Will accept the terms and conditions of warranty as in the warranty card

## DEALERS COPY

DATE _____	DATE OF DELIVERY _____	DEALERS OFFICIAL SEAL	DEALERS SIGN _____
PURCHASERS NAME & ADDRESS _____ _____	 CUSTOMER SIGN		
PRODUCT NAME	PRODUCT SERIAL NO.	INVOICE/DN NO.	
			

I/Will accept the terms and conditions of warranty as in the warranty card

## COMPANY COPY

DATE _____	DATE OF DELIVERY _____	DEALERS OFFICIAL SEAL	DEALERS SIGN _____
PURCHASERS NAME & ADDRESS _____ _____	 CUSTOMER SIGN		
PRODUCT NAME	PRODUCT SERIAL NO.	INVOICE/DN NO.	
			

I/Will accept the terms and conditions of warranty as in the warranty card

1. LIMITED WARRANTY PERIOD : For a period of six months from the date of Sale / delivery of the product which ever is earlier. 2. LIMITED WARRANTY OBLIGATION : Replacement of defective part(s) by authorized dealer are free of charges. If found defective by reasons of defective material / poor workmanship, parts will be replaced and there will be no value re-imburement. 3. TERMS & CONDITIONS : a. Claims under warranty will be accepted on submission of Warranty Card duly filled and stamped by authorized dealer together with the original purchase document. : b. Shipping / transportation / Incidental charges incurred in replacing defective parts under warranty shall be borne by the purchaser

WARRANTY null & void if

- (i) Lack of maintenance, (ii) Incorrect use of the machine or tampering, (iii) Use of non-genuine spare parts, (iv) Usage of acids, solvents, or any flammable materials, (v) Non-usage of filter water / clear water / soft water & using water above 40°C temperature, (vi) While using the pressure washers to draw water which is contaminated with dust & solvents (eg. paint thinners, gasoline, oil, etc.), (vii) Repair done by unauthorized service people, (viii) Those parts subject to wear & tear due to normal operations and plastic parts, rubber items etc, (ix) Loose connections, faulty electrical fixtures & fluctuations in power supply.
- 4. Should any failure occur during or after the warranty period, customer does not have the right to interrupt payment / price discount.
- 5. Incidental or consequential damages like inconvenience commercial loss, loss of tie, mental agony etc.
- 6. Loss of any nature due to operation or non-operation is not covered under warranty.
- 7. All free service are at Dealer's service point only.
- 8. Warranty ceases if service is not done periodically.
- 9. The attached card should be completed and returned to Ratnagiri Impex Pvt. Ltd. for registration immediately after sale / delivery.
- 10. The warranty is void unless you register the warranty card with Ratnagiri Impex Pvt. Ltd.
- 11. The decision of Ratnagiri Impex Pvt. Ltd., in settling the warranty is final in all respects.
- 12. All disputes are subject to Bangalore Courts Jurisdiction

1. LIMITED WARRANTY PERIOD : For a period of six months from the date of Sale / delivery of the product which ever is earlier. 2. LIMITED WARRANTY OBLIGATION : Replacement of defective part(s) by authorized dealer are free of charges. If found defective by reasons of defective material / poor workmanship, parts will be replaced and there will be no value re-imburement. 3. TERMS & CONDITIONS : a. Claims under warranty will be accepted on submission of Warranty Card duly filled and stamped by authorized dealer together with the original purchase document. : b. Shipping / transportation / Incidental charges incurred in replacing defective parts under warranty shall be borne by the purchaser.

WARRANTY null & void if

- (i) Lack of maintenance, (ii) Incorrect use of the machine or tampering, (iii) Use of non-genuine spare parts, (iv) Usage of acids, solvents, or any flammable materials, (v) Non-usage of filter water / clear water / soft water & using water above 40°C temperature, (vi) While using the pressure washers to draw water which is contaminated with dust & solvents (eg. paint thinners, gasoline, oil, etc.), (vii) Repair done by unauthorized service people, (viii) Those parts subject to wear & tear due to normal operations and plastic parts, rubber items etc, (ix) Loose connections, faulty electrical fixtures & fluctuations in power supply.
- 4. Should any failure occur during or after the warranty period, customer does not have the right to interrupt payment / price discount.
- 5. Incidental or consequential damages like inconvenience commercial loss, loss of tie, mental agony etc.
- 6. Loss of any nature due to operation or non-operation is not covered under warranty.
- 7. All free service are at Dealer's service point only.
- 8. Warranty ceases if service is not done periodically.
- 9. The attached card should be completed and returned to Ratnagiri Impex Pvt. Ltd. for registration immediately after sale / delivery.
- 10. The warranty is void unless you register the warranty card with Ratnagiri Impex Pvt. Ltd.
- 11. The decision of Ratnagiri Impex Pvt. Ltd., in settling the warranty is final in all respects.
- 12. All disputes are subject to Bangalore Courts Jurisdiction

1. LIMITED WARRANTY PERIOD : For a period of six months from the date of Sale / delivery of the product which ever is earlier. 2. LIMITED WARRANTY OBLIGATION : Replacement of defective part(s) by authorized dealer are free of charges. If found defective by reasons of defective material / poor workmanship, parts will be replaced and there will be no value re-imburement. 3. TERMS & CONDITIONS : a. Claims under warranty will be accepted on submission of Warranty Card duly filled and stamped by authorized dealer together with the original purchase document. : b. Shipping / transportation / Incidental charges incurred in replacing defective parts under warranty shall be borne by the purchaser.

WARRANTY null & void if

- (i) Lack of maintenance, (ii) Incorrect use of the machine or tampering, (iii) Use of non-genuine spare parts, (iv) Usage of acids, solvents, or any flammable materials, (v) Non-usage of filter water / clear water / soft water & using water above 40°C temperature, (vi) While using the pressure washers to draw water which is contaminated with dust & solvents (eg. paint thinners, gasoline, oil, etc.), (vii) Repair done by unauthorized service people, (viii) Those parts subject to wear & tear due to normal operations and plastic parts, rubber items etc, (ix) Loose connections, faulty electrical fixtures & fluctuations in power supply.
- 4. Should any failure occur during or after the warranty period, customer does not have the right to interrupt payment / price discount.
- 5. Incidental or consequential damages like inconvenience commercial loss, loss of tie, mental agony etc.
- 6. Loss of any nature due to operation or non-operation is not covered under warranty.
- 7. All free service are at Dealer's service point only.
- 8. Warranty ceases if service is not done periodically.
- 9. The attached card should be completed and returned to Ratnagiri Impex Pvt. Ltd. for registration immediately after sale / delivery.
- 10. The warranty is void unless you register the warranty card with Ratnagiri Impex Pvt. Ltd.
- 11. The decision of Ratnagiri Impex Pvt. Ltd., in settling the warranty is final in all respects.
- 12. All disputes are subject to Bangalore Courts Jurisdiction



**FREE SERVICE COUPON (30DAYS/30HRS. WHICHEVER IS EARLIER)**

MODEL

SERIAL NUMBER

PDI DATE

SERVICE NO.

PURCHASE BILL NO.

DATE

DEALERS OFFICE SEAL

- 1. Check and test the fuel mixture
- 3. Check , clean and adjust the spark plug
- 5. Check and sparken the cutting tools
- 7. Start and check the noise, vibration, loosen etc..

OPERATIONS

- 2. check and clean the air filter
- 4. Check and adjust the carburetor tuning
- 6. Product familirisation on usage
- 8. Routine maintenance and shortage.

**FREE SERVICE COUPON (30DAYS/30HRS. WHICHEVER IS EARLIER)**

MODEL

SERIAL NUMBER

PDI DATE

SERVICE NO.

PURCHASE BILL NO.

DATE

DEALERS OFFICE SEAL

- 1. Check and test the fuel mixture
- 3. Check , clean and adjust the spark plug
- 5. Check and sparken the cutting tools
- 7. Start and check the noise, vibration, loosen etc..

OPERATIONS

- 2. check and clean the air filter
- 4. Check and adjust the carburetor tuning
- 6. Product familirisation on usage
- 8. Routine maintenance and shortage.

**FREE SERVICE COUPON (30DAYS/30HRS. WHICHEVER IS EARLIER)**

MODEL

SERIAL NUMBER

PDI DATE

SERVICE NO.

PURCHASE BILL NO.

DATE

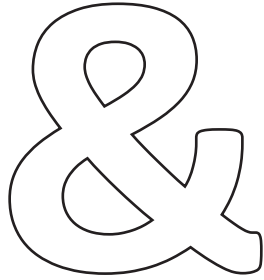
DEALERS OFFICE SEAL

- 1. Check and test the fuel mixture
- 3. Check , clean and adjust the spark plug
- 5. Check and sparken the cutting tools
- 7. Start and check the noise, vibration, loosen etc..

OPERATIONS

- 2. check and clean the air filter
- 4. Check and adjust the carburetor tuning
- 6. Product familirisation on usage
- 8. Routine maintenance and shortage.

# DOS

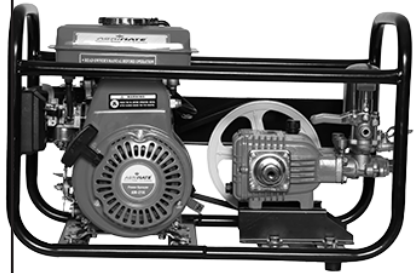
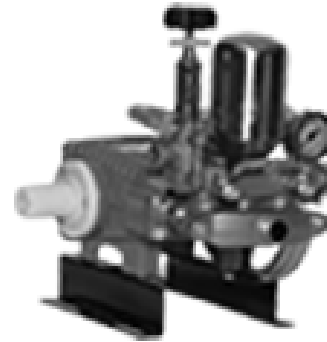


# DONT'S

1. Always read the instruction manual supplied along with the equipments and understand the correct installation and operating procedures before attempting to use the equipments.
2. It is important to use the personal protection equipments such as head helmet with visor, ear defenders, goggles, safety gloves, cut resistant shoes, trousers and jackets while operating potentially dangerous machines
3. Avoid untrained persons using the equipments. Children must not be allowed to handle these equipments
4. Always use genuine spares and accessories in repairs and usage to derive maximum life of the equipments.
5. Always keep the equipments in good working condition to minimize loss of output as well as to reduce the pollution and save the environment
6. Do not use the machine within range of persons unless they wear protective clothing
7. Do not operate the machine when fatigued or under the influence of alcohol or drugs
8. When the machine is running, please maintain a constant water supply. Without water circulation will damage the sealing rings of the machine.
9. For more query kindly contact for our Service Center/Dealer/ franchise

# Agrimate Army For Pest Control

ANY WHERE - ANY TIME - ANY CROP



Marketed by:  
**ratnagiri  
impex**  
BRINGING YOU THE FUTURE... NOW

**RATNAGIRI IMPEX PVT., LTD.,**

Annapurna House, #1 / 1G, 7th Cross, New  
Guddadahalli

Mysore Road, Bangalore - 560 026

Missed Call : 7393 938 938

Email: [ask@agrimart.in](mailto:ask@agrimart.in)