

AGRIMATE CROP HARVESTER - BACKPACK AM-4035HC-BPH-4S-PRO



AN ISO 9001 : 2015 CERTIFIED COMPANY

TECHNICAL SPECIFICATIONS

MODEL	AM-4035HC-BPH-4S-PRO
ENGINE	GX-35
POWER	35CC
FUEL TANK CAPCITY	0.63 LTR

This exploded view diagram illustrates the assembly of a mechanical component, likely a door hinge or latch mechanism. The parts are numbered 1 through 88. The diagram is organized into several sub-assemblies:

- Top Left:** Shows a vertical assembly with parts 1, 2, 3, 4, 5, 6, 7, and 8.
- Bottom Left:** Shows a bracket assembly with parts 9, 10, 11, 12, 13, 14, and 15.
- Center Left:** A vertical column of parts including 16, 17, 18, 19, 20, 21, 22, 23, 24, 25, 26, 27, 28, 29, 30, 31, 32, 33, 34, and 35.
- Center Right:** A long horizontal assembly with parts 36, 37, 38, 39, 40, 41, 42, 43, 44, 45, 46, 47, 48, 49, 50, 51, 52, 53, 54, 55, 56, 57, 58, 59, 60, 61, 62, and 63.
- Bottom Center:** A bracket assembly with parts 64, 65, 66, 67, 68, 69, 70, 71, 72, 73, 74, 75, 76, 77, 78, 79, 80, 81, 82, 83, 84, 85, 86, 87, and 88.

The diagram uses standard mechanical drawing conventions, including dashed lines to indicate the assembly path and alignment of components.

TRANSMISSION DIAGRAM OF AM-4035HC-BPH-4S-PRO - CROP HARVESTER - BACKPACK

SL NO.	PART NO.	DESCRIPTION	SL NO.	PART NO.	DESCRIPTION
1	AM-4035HC-BPH-T01	Harness Belt	17	AM-4035HC-BPH-T17	Stop ring
2	AM-4035HC-BPH-T02	Bolt	18	AM-4035HC-BPH-T18	Stop ring
3	AM-4035HC-BPH-T03	Board	19	AM-4035HC-BPH-T19	Bearing
4	AM-4035HC-BPH-T04	Bracket	20	AM-4035HC-BPH-T20	Gear
5	AM-4035HC-BPH-T05	Nut	21	AM-4035HC-BPH-T21	NA
6	AM-4035HC-BPH-T06	Nut	22	AM-4035HC-BPH-T22	Screw
7	AM-4035HC-BPH-T07	Spring	23	AM-4035HC-BPH-T23	Gear case cover
8	AM-4035HC-BPH-T08	Screw	24	AM-4035HC-BPH-T24	Screw
9	AM-4035HC-BPH-T09	Srew	25	AM-4035HC-BPH-T25	Safety Guard
10	AM-4035HC-BPH-T10	Base	26	AM-4035HC-BPH-T26	Bearing
11	AM-4035HC-BPH-T11	Nut	27	AM-4035HC-BPH-T27	Gear
12	AM-4035HC-BPH-T12	Screw	28	AM-4035HC-BPH-T28	Gear shaft
13	AM-4035HC-BPH-T13	Nut	29	AM-4035HC-BPH-T29	Bearing
14	AM-4035HC-BPH-T14	Rubber cap	30	AM-4035HC-BPH-T30	Stop ring
15	AM-4035HC-BPH-T15	Base	31	AM-4035HC-BPH-T31	Holder A
16	AM-4035HC-BPH-T16	Gear case comp	32	AM-4035HC-BPH-T32	Holder B

TRANSMISSION DIAGRAM OF AM-4035HC-BPH-4S-PRO - CROP HARVESTER - BACKPACK

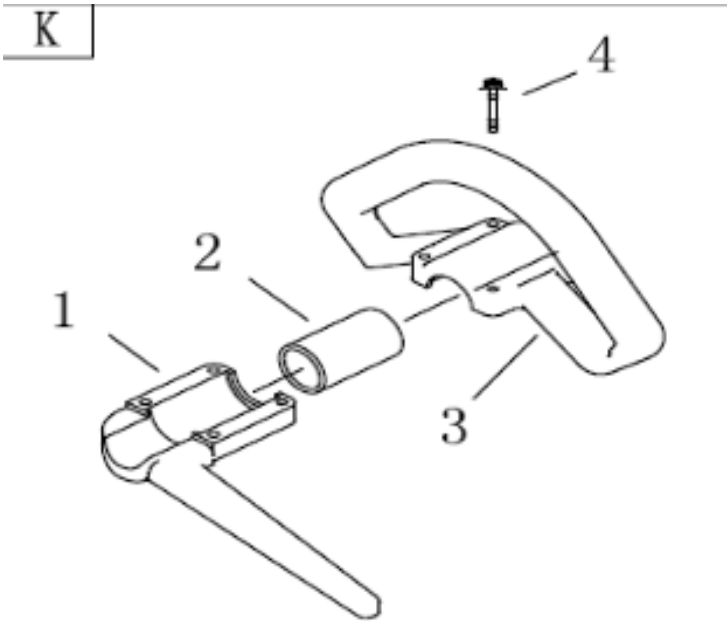
SL NO.	PART NO.	DESCRIPTION	SL NO.	PART NO.	DESCRIPTION
33	AM-4035HC-BPH-T33	Holder C	49	AM-4035HC-BPH-T49	Gasket
34	AM-4035HC-BPH-T34	Washer	50	AM-4035HC-BPH-T50	Bolt
35	AM-4035HC-BPH-T35	Nut	51	AM-4035HC-BPH-T51	roll steel strip
36	AM-4035HC-BPH-T36	Gasket	52	AM-4035HC-BPH-T52	Bellow
37	AM-4035HC-BPH-T37	Screw	53	AM-4035HC-BPH-T53	Flexible Liner Comp
38	AM-4035HC-BPH-T38	Screw	54	AM-4035HC-BPH-T54	Flexible Liner Comp
39	AM-4035HC-BPH-T39	Clutch drum	55	AM-4035HC-BPH-T55	Shaft
40	AM-4035HC-BPH-T40	Stop ring	56	AM-4035HC-BPH-T56	Screw
41	AM-4035HC-BPH-T41	Bearing	57	AM-4035HC-BPH-T57	Screw
42	AM-4035HC-BPH-T42	Stop ring	58	AM-4035HC-BPH-T58	Connect
43	AM-4035HC-BPH-T43	Spring	59	AM-4035HC-BPH-T59	Screwm
44	AM-4035HC-BPH-T44	Stop ring	60	AM-4035HC-BPH-T60	Pipe
45	AM-4035HC-BPH-T45	Clutch case	61	AM-4035HC-BPH-T61	Drive Shaft
46	AM-4035HC-BPH-T46	Pin	62	AM-4035HC-BPH-T62	Oil bearing
47	AM-4035HC-BPH-T47	Clutch Comp	63	AM-4035HC-BPH-T63	Rubber cover
48	AM-4035HC-BPH-T48	Gasket	64	AM-4035HC-BPH-T64	Throttle Wire assy

TRANSMISSION DIAGRAM OF AM-4035HC-BPH-4S-PRO - CROP HARVESTER - BACKPACK

SL NO.	PART NO.	DESCRIPTION	SL NO.	PART NO.	DESCRIPTION
65	AM-4035HC-BPH-T65	Lever Assy	77	AM-4035HC-BPH-T77	Nut
66	AM-4035HC-BPH-T66	Screw	78	AM-4035HC-BPH-T78	Stop switch
67	AM-4035HC-BPH-T67	washer	79	AM-4035HC-BPH-T79	Handdle Assy
68	AM-4035HC-BPH-T68	Throttle lever	80	AM-4035HC-BPH-T80	Lift handle
69	AM-4035HC-BPH-T69	Gasket	81	AM-4035HC-BPH-T81	Screw
70	AM-4035HC-BPH-T70	Pin	82	AM-4035HC-BPH-T82	Press board
71	AM-4035HC-BPH-T71	Box, Nether	83	AM-4035HC-BPH-T83	Press board
72	AM-4035HC-BPH-T72	Box, Upper	84	AM-4035HC-BPH-T84	Blade
73	AM-4035HC-BPH-T73	Nut M5	85	AM-4035HC-BPH-T85	Safety Guard
74	AM-4035HC-BPH-T74	Stop ring	86	AM-4035HC-BPH-T86	Bolt
75	AM-4035HC-BPH-T75	Screw	87	AM-4035HC-BPH-T87	Bracket
76	AM-4035HC-BPH-T76	Throttle lever	88	AM-4035HC-BPH-T88	Press board

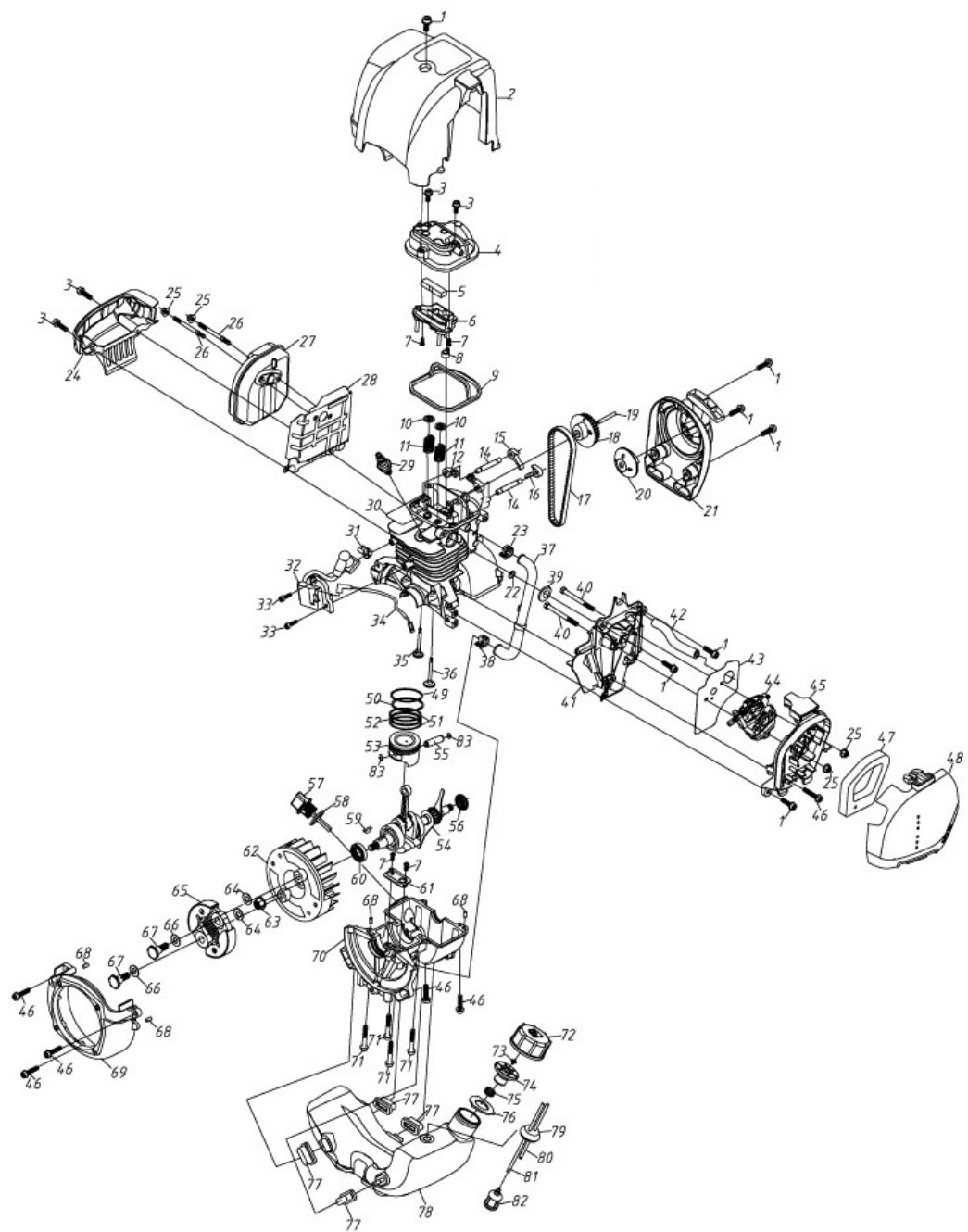
TRANSMISSION DIAGRAM OF AM-4035HC-BPH-4S-PRO - CROP HARVESTER - BACKPACK

Handle Comp



SL NO.	PART NO.	DESCRIPTION
K	Handle Comp	
1	AM-4035HC-BPH-TK01	Handle
2	AM-4035HC-BPH-TK02	Rubber cover
3	AM-4035HC-BPH-TK03	Lift handle
4	AM-4035HC-BPH-TK04	Bolt

ENGINE DIAGRAM &SPARE PARTS LIST OFAM-4035HC-BPH-4S-PRO - CROP HARVESTER BACKPACK



ENGINE DIAGRAM & SPARE PARTS LIST OF AM-4035HC-BPH-4S-PRO - CROP HARVESTER BACKPACK

SL NO.	PART NO.	DESCRIPTION	SL NO.	PART NO.	DESCRIPTION
1	AM-4035HC-BPH-E01	Screw	17	AM-4035HC-BPH-E17	Synchronous Belt
2	AM-4035HC-BPH-E02	Cylinder Cover	18	AM-4035HC-BPH-E18	Cam Wheel
3	AM-4035HC-BPH-E03	Screw	19	AM-4035HC-BPH-E19	Camshaft
4	AM-4035HC-BPH-E04	Cylinder Valve cover	20	AM-4035HC-BPH-E20	Start Reel
5	AM-4035HC-BPH-E05	Oil Gas seperator	21	AM-4035HC-BPH-E21	Starter
6	AM-4035HC-BPH-E06	Inside Cover	22	AM-4035HC-BPH-E22	Admitting Gasket
7	AM-4035HC-BPH-E07	Screw	23	AM-4035HC-BPH-E23	Holding Down Clip
8	AM-4035HC-BPH-E08	Rubber Cushion	24	AM-4035HC-BPH-E24	Muffler Baffle
9	AM-4035HC-BPH-E09	Rubber Cushion	25	AM-4035HC-BPH-E25	Nut
10	AM-4035HC-BPH-E10	Valve spring seat	26	AM-4035HC-BPH-E26	Double Edge Bolt
11	AM-4035HC-BPH-E11	Valve Spring	27	AM-4035HC-BPH-E27	Muffler
12	AM-4035HC-BPH-E12	Exhaust Valve Rocker	28	AM-4035HC-BPH-E28	Muffler Baffle
13	AM-4035HC-BPH-E13	Inlet Valve Rocker	29	AM-4035HC-BPH-E29	Spark Plug
14	AM-4035HC-BPH-E14	Rocker Pin	30	AM-4035HC-BPH-E30	Cylindr
15	AM-4035HC-BPH-E15	Exhaust Rocker	31	AM-4035HC-BPH-E31	Fastner
16	AM-4035HC-BPH-E16	Inlet Rocker	32	AM-4035HC-BPH-E32	Ignition Starter

ENGINE DIAGRAM & SPARE PARTS LIST OF AM-4035HC-BPH-4S-PRO - CROP HARVESTER BACKPACK

SL NO.	PART NO.	DESCRIPTION	SL NO.	PART NO.	DESCRIPTION
33	AM-4035HC-BPH-E33	Screw	49	AM-4035HC-BPH-E49	Piston Ring
34	AM-4035HC-BPH-E34	Stopping wire	50	AM-4035HC-BPH-E50	Piston Ring
35	AM-4035HC-BPH-E35	Exhaust Valve	51	AM-4035HC-BPH-E51	Oil Scraper Ring
36	AM-4035HC-BPH-E36	Inlet Valve	52	AM-4035HC-BPH-E52	Liner Ring
37	AM-4035HC-BPH-E37	Balancing pressure pipe	53	AM-4035HC-BPH-E53	Piston
38	AM-4035HC-BPH-E38	Holding down clip	54	AM-4035HC-BPH-E54	Crankshaft
39	AM-4035HC-BPH-E39	O-seal Ring	55	AM-4035HC-BPH-E55	Piston Pin
40	AM-4035HC-BPH-E40	Screw	56	AM-4035HC-BPH-E56	Oil Seal
41	AM-4035HC-BPH-E41	Admitting pipe	57	AM-4035HC-BPH-E57	Oil Scale
42	AM-4035HC-BPH-E42	Blast Pipe	58	AM-4035HC-BPH-E58	O Seal Ring
43	AM-4035HC-BPH-E43	Gasket	59	AM-4035HC-BPH-E59	Key
44	AM-4035HC-BPH-E44	Caburetor	60	AM-4035HC-BPH-E60	Oil Seal
45	AM-4035HC-BPH-E45	Cleaner inside cover	61	AM-4035HC-BPH-E61	Reed Valve
46	AM-4035HC-BPH-E46	Screw	62	AM-4035HC-BPH-E62	Magneto Rotor Comp.
47	AM-4035HC-BPH-E47	Filter net	63	AM-4035HC-BPH-E63	Nut
48	AM-4035HC-BPH-E48	Air filter cover	64	AM-4035HC-BPH-E64	Washer

ENGINE DIAGRAM &SPARE PARTS LIST OFAM-4035HC-BPH-4S-PRO - CROP HARVESTER BACKPACK

SL NO.	PART NO.	DESCRIPTION	SL NO.	PART NO.	DESCRIPTION
65	AM-4035HC-BPH-E65	Clutch	75	AM-4035HC-BPH-E75	Shell Cover
66	AM-4035HC-BPH-E66	Washer	76	AM-4035HC-BPH-E76	Air Proof Gasket
67	AM-4035HC-BPH-E67	Screw Pin	77	AM-4035HC-BPH-E77	Rubber Cushion
68	AM-4035HC-BPH-E68	Pin	78	AM-4035HC-BPH-E78	Fuel Tank
69	AM-4035HC-BPH-E69	Magneto Cover	79	AM-4035HC-BPH-E79	Plug
70	AM-4035HC-BPH-E70	Crankcase	80	AM-4035HC-BPH-E80	Fuel Return Pipe
71	AM-4035HC-BPH-E71	Screw	81	AM-4035HC-BPH-E81	Fuel Section Pipe
72	AM-4035HC-BPH-E72	Fuel Tank Lid	82	AM-4035HC-BPH-E82	Filter
73	AM-4035HC-BPH-E73	Air Admission Valve	83	AM-4035HC-BPH-E83	Ring
74	AM-4035HC-BPH-E74	Inside Cover			

INSPECTION & MAINTAINANCE

For safety use, make sure the machine is cleaned every three months. Before working, make sure to inspect the filter and the nozzle and ensure there is no impurity. After working, make sure there is no water in the pump and the hose.

If the machine needs to be repaired in the guarantee period, please return the machine to the shop. You need to provide the certificate of purchase on order to repair or get the substitute.

Before packing, the machine should be cleaned, then use closed packaging, packaging should be firm. Store the machine in dry place.

For transportation safety. The machine should comply with ISTA.

Do not dispose of electrical machines as unsorted municipal waste, use separate collection facilities.

If electrical machines are disposed of in landfills or dumps, hazardous substances can leak into the ground water and get into the food chain, damaging your health and well being.

When replacing old machines with new ones, the retailer is legally obligated to take back your old machine for disposals at least free of charge.

WARRANTY CARD

CUSTOMER COPY

DATE _____	DATE OF DELIVERY _____	DEALERS OFFICIAL SEAL	DEALERS SIGN _____
PURCHASERS NAME & ADDRESS _____ _____ _____	<div>CUSTOMER SIGN</div>	<div></div>	
PRODUCT NAME	PRODUCT SERIAL NO.	INVOICE/DN NO.	
<div></div>	<div></div>	<div></div>	
I/Will accept the terms and conditions of warranty as in the warranty card			

DEALERS COPY

DATE _____	DATE OF DELIVERY _____	DEALERS OFFICIAL SEAL	DEALERS SIGN _____
PURCHASERS NAME & ADDRESS _____ _____ _____	<div>CUSTOMER SIGN</div>	<div></div>	
PRODUCT NAME	PRODUCT SERIAL NO.	INVOICE/DN NO.	
<div></div>	<div></div>	<div></div>	
I/Will accept the terms and conditions of warranty as in the warranty card			

COMPANY COPY

DATE _____	DATE OF DELIVERY _____	DEALERS OFFICIAL SEAL	DEALERS SIGN _____
PURCHASERS NAME & ADDRESS _____ _____ _____	<div>CUSTOMER SIGN</div>	<div></div>	
PRODUCT NAME	PRODUCT SERIAL NO.	INVOICE/DN NO.	
<div></div>	<div></div>	<div></div>	
I/Will accept the terms and conditions of warranty as in the warranty card			

1. LIMITED WARRANTY PERIOD : For a period of six months from the date of Sale / delivery of the product which ever is earlier. 2. LIMITED WARRANTY OBLIGATION : Replacement of defective part(s) by authorized dealer are free of charges. If found defective by reasons of defective material / poor workmanship, parts will be replaced and there will be no value re-imbursement. 3. TERMS & CONDITIONS : a. Claims under warranty will be accepted on submission of Warranty Card duly filled and stamped by authorized dealer together with the original purchase document. : b. Shipping / transportation / Incidental charges incurred in replacing defective parts under warranty shall be borne by the purchaser

WARRANTY null & void if
(i) Lack of maintenance, (ii) Incorrect use of the machine or tampering, (iii) Use of non-genuine spare parts, (iv) Usage of acids, solvents, or any flammable materials, (v) Non-usage of filter water / clear water / soft water & using water above 40°C temperature, (vi) While using the pressure washers to draw water which is contaminated with dust & solvents (eg. paint thinners, gasoline, oil, etc.), (vii) Repair done by unauthorized service people, (viii) Those parts subject to wear & tear due to normal operations and plastic parts, rubber items etc, (ix) Loose connections, faulty electrical fixtures & fluctuations in power supply.
4. Should any failure occur during or after the warranty period, customer does not have the right to interrupt payment / price discount.
5. Incidental or consequential damages like inconvenience commercial loss, loss of tie, mental agony etc.
6. Loss of any nature due to operation or non-operation is not covered under warranty.
7. All free service are at Dealer's service point only.
8. Warranty ceases if service is not done periodically.
9. The attached card should be completed and returned to Ratnagiri Impex Pvt. Ltd. for registration immediately after sale / delivery.
10. The warranty is void unless you register the warranty card with Ratnagiri Impex Pvt. Ltd.
11. The decision of Ratnagiri Impex Pvt. Ltd., in settling the warranty is final in all respects.
12. All disputes are subject to Bangalore Courts Jurisdiction

1. LIMITED WARRANTY PERIOD : For a period of six months from the date of Sale / delivery of the product which ever is earlier. 2. LIMITED WARRANTY OBLIGATION : Replacement of defective part(s) by authorized dealer are free of charges. If found defective by reasons of defective material / poor workmanship, parts will be replaced and there will be no value re-imbursement. 3. TERMS & CONDITIONS : a. Claims under warranty will be accepted on submission of Warranty Card duly filled and stamped by authorized dealer together with the original purchase document. : b. Shipping / transportation / Incidental charges incurred in replacing defective parts under warranty shall be borne by the purchaser.
WARRANTY null & void if
(i) Lack of maintenance, (ii) Incorrect use of the machine or tampering, (iii) Use of non-genuine spare parts, (iv) Usage of acids, solvents, or any flammable materials, (v) Non-usage of filter water / clear water / soft water & using water above 40°C temperature, (vi) While using the pressure washers to draw water which is contaminated with dust & solvents (eg. paint thinners, gasoline, oil, etc.), (vii) Repair done by unauthorized service people, (viii) Those parts subject to wear & tear due to normal operations and plastic parts, rubber items etc, (ix) Loose connections, faulty electrical fixtures & fluctuations in power supply.
4. Should any failure occur during or after the warranty period, customer does not have the right to interrupt payment / price discount.
5. Incidental or consequential damages like inconvenience commercial loss, loss of tie, mental agony etc.
6. Loss of any nature due to operation or non-operation is not covered under warranty.
7. All free service are at Dealer's service point only.
8. Warranty ceases if service is not done periodically.
9. The attached card should be completed and returned to Ratnagiri Impex Pvt. Ltd. for registration immediately after sale / delivery.
10. The warranty is void unless you register the warranty card with Ratnagiri Impex Pvt. Ltd.
11. The decision of Ratnagiri Impex Pvt. Ltd., in settling the warranty is final in all respects.
12. All disputes are subject to Bangalore Courts Jurisdiction

1. LIMITED WARRANTY PERIOD : For a period of six months from the date of Sale / delivery of the product which ever is earlier. 2. LIMITED WARRANTY OBLIGATION : Replacement of defective part(s) by authorized dealer are free of charges. If found defective by reasons of defective material / poor workmanship, parts will be replaced and there will be no value re-imbursement. 3. TERMS & CONDITIONS : a. Claims under warranty will be accepted on submission of Warranty Card duly filled and stamped by authorized dealer together with the original purchase document. : b. Shipping / transportation / Incidental charges incurred in replacing defective parts under warranty shall be borne by the purchaser.
WARRANTY null & void if
(i) Lack of maintenance, (ii) Incorrect use of the machine or tampering, (iii) Use of non-genuine spare parts, (iv) Usage of acids, solvents, or any flammable materials, (v) Non-usage of filter water / clear water / soft water & using water above 40°C temperature, (vi) While using the pressure washers to draw water which is contaminated with dust & solvents (eg. paint thinners, gasoline, oil, etc.), (vii) Repair done by unauthorized service people, (viii) Those parts subject to wear & tear due to normal operations and plastic parts, rubber items etc, (ix) Loose connections, faulty electrical fixtures & fluctuations in power supply.
4. Should any failure occur during or after the warranty period, customer does not have the right to interrupt payment / price discount.
5. Incidental or consequential damages like inconvenience commercial loss, loss of tie, mental agony etc.
6. Loss of any nature due to operation or non-operation is not covered under warranty.
7. All free service are at Dealer's service point only.
8. Warranty ceases if service is not done periodically.
9. The attached card should be completed and returned to Ratnagiri Impex Pvt. Ltd. for registration immediately after sale / delivery.
10. The warranty is void unless you register the warranty card with Ratnagiri Impex Pvt. Ltd.
11. The decision of Ratnagiri Impex Pvt. Ltd., in settling the warranty is final in all respects.
12. All disputes are subject to Bangalore Courts Jurisdiction

FREE SERVICE COUPON (30DAYS/30HRS. WHICHEVER IS EARLIER)

MODEL		SERIAL NUMBER	
PDI DATE	SERVICE NO.	PURCHASE BILL NO.	DATE
DEALERS OFFICE SEAL	OPERATIONS		
	<div> 1. Check and test the fuel mixture 3. Check , clean and adjust the spark plug 5. Check and sparken the cutting tools 7. Start and check the noise, vibration, loosen etc.. </div> <div> 2. check and clean the air filter 4. Check and adjust the carburetor tuning 6. Product familiarisation on usage 8. Routine maintenance and shortage. </div>		

FREE SERVICE COUPON (30DAYS/30HRS. WHICHEVER IS EARLIER)

MODEL		SERIAL NUMBER	
PDI DATE	SERVICE NO.	PURCHASE BILL NO.	DATE
DEALERS OFFICE SEAL	OPERATIONS		
	<div> 1. Check and test the fuel mixture 3. Check , clean and adjust the spark plug 5. Check and sparken the cutting tools 7. Start and check the noise, vibration, loosen etc.. </div> <div> 2. check and clean the air filter 4. Check and adjust the carburetor tuning 6. Product familiarisation on usage 8. Routine maintenance and shortage. </div>		

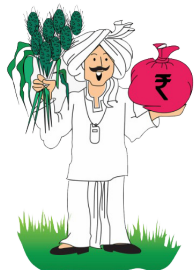
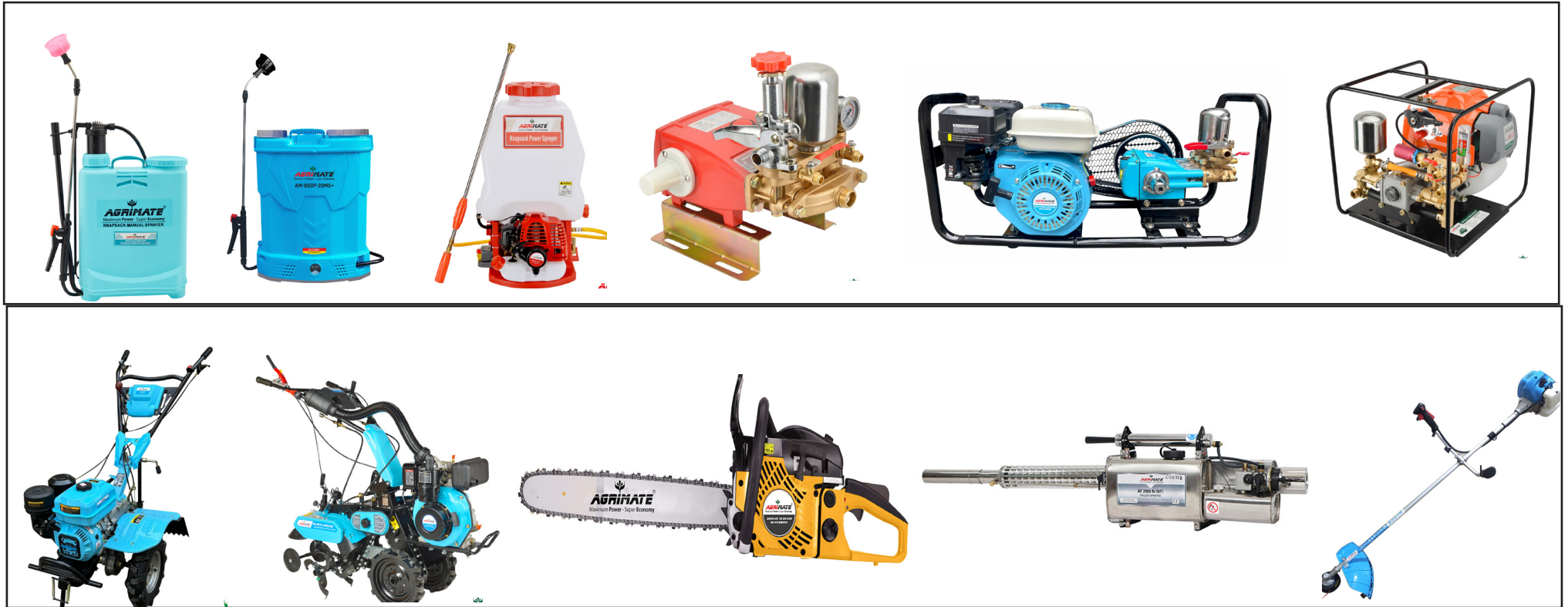
FREE SERVICE COUPON (30DAYS/30HRS. WHICHEVER IS EARLIER)

MODEL		SERIAL NUMBER	
PDI DATE	SERVICE NO.	PURCHASE BILL NO.	DATE
DEALERS OFFICE SEAL	OPERATIONS		
	<div> 1. Check and test the fuel mixture 3. Check , clean and adjust the spark plug 5. Check and sparken the cutting tools 7. Start and check the noise, vibration, loosen etc.. </div> <div> 2. check and clean the air filter 4. Check and adjust the carburetor tuning 6. Product familiarisation on usage 8. Routine maintenance and shortage. </div>		

DOS & DONTs

1. Always read the instruction manual supplied along with the equipments and understand the correct installation and operating procedures before attempting to use the equipments.
2. It is important to use the personal protection equipments such as head helmet with visor, ear defenders, goggles, safety gloves, cut resistant shoes, trousers and jackets while operating potentially dangerous machines
3. Avoid untrained persons using the equipments. Children must not be allowed to handle these equipments
4. Always use genuine spares and accessories in repairs and usage to derive maximum life of the equipments.
5. Always keep the equipments in good working condition to minimize loss of output as well as to reduce the pollution and save the environment
6. Do not use the machine within range of persons unless they wear protective clothing
7. Do not operate the machine when fatigued or under the influence of alcohol or drugs
8. When the machine is running, please maintain a constant water supply. Without water circulation will damage the sealing rings of the machine.
9. For more query kindly contact for our Service Center/Dealer/ franchise

AGRIMATE MULTI PURPOSE EQUIPMENT ANYWHERE - ANYTIME - ANY CROP



**ratnagiri
impeX**

BRINGING YOU THE FUTURE... NOW

IMPORTED & MARKETING BY,
RATNAGIRI IMPEX PVT., LTD.,
Annapurna House, #1 / 1G, 7th Cross, New
Guddadahalli Mysore Road, Bangalore - 560 026
Missed Call : 7393 938 938 Email: ask@agrimart.in