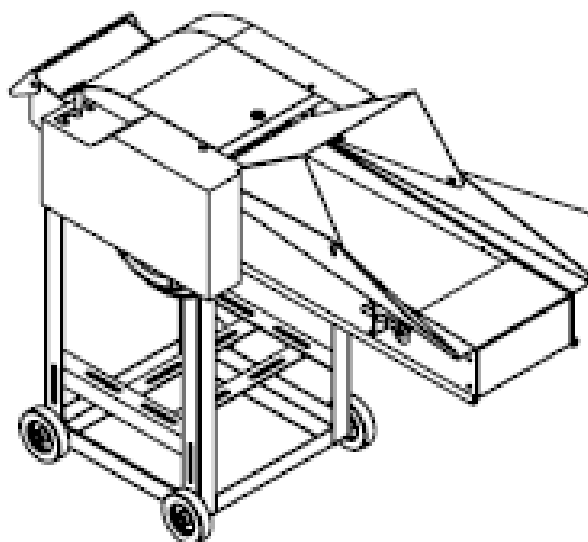


USER MANUAL  
**CHAFF CUTTER**  
AM-CCM-CB1200-GT

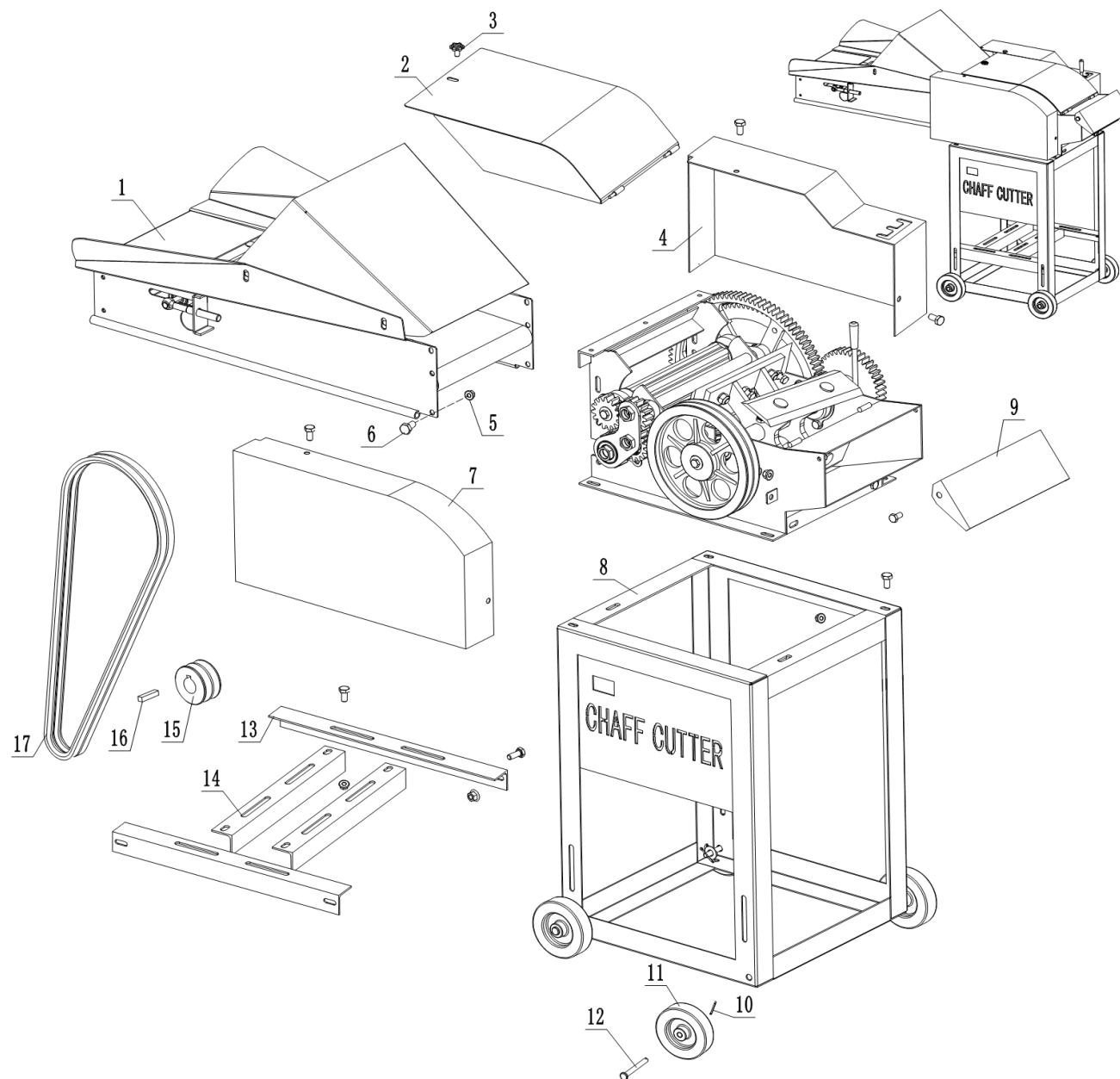


**AN ISO 9001 : 2015 CERTIFIED COMPANY**

## TECHNICAL SPECIFICATIONS

MODEL	AM-CCM-CB1200-GT
Motor	220v, 50HZ
Power	2.2KW/3HP-Copper Winding
Capacity/Hr.	Upto 1000Kg.
No. of Blades	6 BLADES (5 Rotating + 1Fixed )

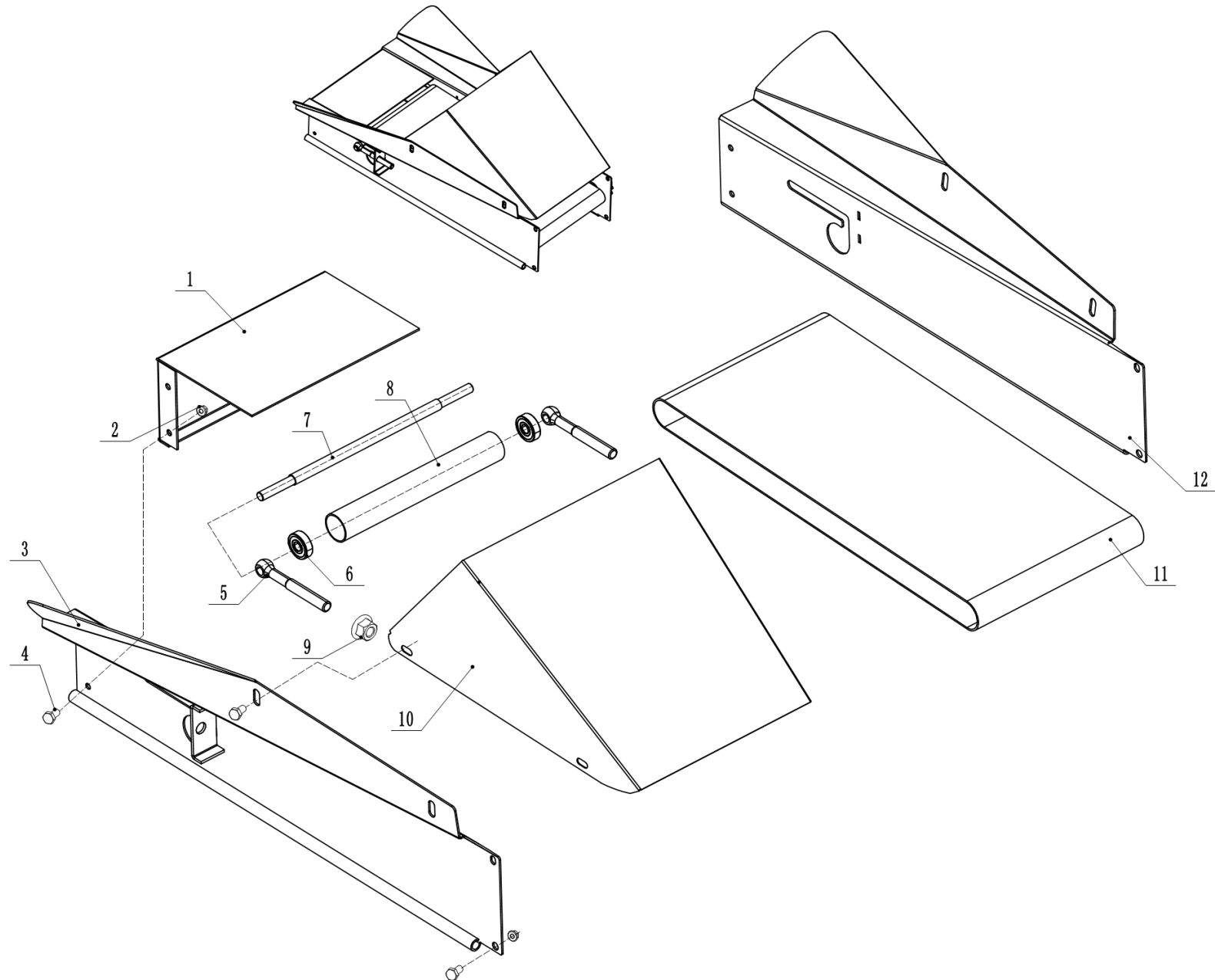
# SPARE PARTS DIAGRAM & PARTS LIST OF CHAFF CUTTER -AM-CCM-CB1200-GT



## SPARE PARTS DIAGRAM & PARTS LIST OF CHAFF CUTTER -AM-CCM-CB1200-GT

SL NO.	PART NO.	DESCRIPTOIN	SL NO.	PART NO.	DESCRIPTOIN
1	AM-CCM-CB1200-GT-TA01	mounting plate	11	AM-CCM-CB1200-GT-TA11	wheel
2	AM-CCM-CB1200-GT-TA02	welded upper cover	12	AM-CCM-CB1200-GT-TA12	Pin type B
3	AM-CCM-CB1200-GT-TA03	Plum handwheel	13	AM-CCM-CB1200-GT-TA13	Long Angle
4	AM-CCM-CB1200-GT-TA04	Gear cover	14	AM-CCM-CB1200-GT-TA14	Short Angle
5	AM-CCM-CB1200-GT-TA05	Hexagon flange face lock nut	15	AM-CCM-CB1200-GT-TA15	motor pulley
6	AM-CCM-CB1200-GT-TA06	Hexagon head bolt	16	AM-CCM-CB1200-GT-TA16	Flat key - Type
7	AM-CCM-CB1200-GT-TA07	Belt cover	17	AM-CCM-CB1200-GT-TA17	Ordinary V-belt
8	AM-CCM-CB1200-GT-TA08	Frame leg			
9	AM-CCM-CB1200-GT-TA09	Discharge guard			
10	AM-CCM-CB1200-GT-TA10	Cotter pin			

# SPARE PARTS DIAGRAM & PARTS LIST OF CHAFF CUTTER -AM-CCM-CB1200-GT



## SPARE PARTS DIAGRAM & PARTS LIST OF CHAFF CUTTER -AM-CCM-CB1200-GT

SL NO.	PART NO.	DESCRIPTOIN	SL NO.	PART NO.	DESCRIPTOIN
1	AM-CCM-CB1200-GT-TB01	Mounting Plate	9	AM-CCM-CB1200-GT-TB09	Standard elastic washer
2	AM-CCM-CB1200-GT-TB02	Hexagon flange face lock nut	10	AM-CCM-CB1200-GT-TB10	Feed guard
3	AM-CCM-CB1200-GT-TB03	Left board	11	AM-CCM-CB1200-GT-TB11	Conveyor belt 1200mm long
4	AM-CCM-CB1200-GT-TB04	Hexagon head bolt	12	AM-CCM-CB1200-GT-TB12	RIGH BOARD
5	AM-CCM-CB1200-GT-TB05	Regulating Screw			
6	AM-CCM-CB1200-GT-TB06	Deep groove ball bearing			
7	AM-CCM-CB1200-GT-TB07	Tension shaft			
8	AM-CCM-CB1200-GT-TB08	Tension tube			

This technical drawing is an exploded view of a mechanical assembly, likely a small-scale machine or motor. The components are numbered 1 through 37. The main assembly consists of a base (20) with a large gear (10) mounted on a shaft (6). A smaller gear (9) is mounted on a separate shaft (13). A motor or actuator (26) is connected to the gear train via a coupling (25) and a shaft (27). A lever arm (28) is attached to the motor. A spring (21) is used to return the lever. A handle (35) is attached to the lever via a pin (34). A small gear (31) is mounted on a shaft (32) and is connected to the main gear train. A bracket (36) is used to mount the handle. A spring (37) is used to return the handle. The assembly is shown in a disassembled state to illustrate the relationship between the parts.

## SPARE PARTS DIAGRAM & PARTS LIST OF CHAFF CUTTER -AM-CCM-CB1200-GT

SL NO.	PART NO.	DESCRIPTOIN	SL NO.	PART NO.	DESCRIPTOIN
1	AM-CCM-CB1200-GT-TC01	Toothed flange hexagon head bolt	20	AM-CCM-CB1200-GT-TC20	Case welding
2	AM-CCM-CB1200-GT-TC02	Large gasket - Class C	21	AM-CCM-CB1200-GT-TC21	spring
3	AM-CCM-CB1200-GT-TC03	Plain type flat key - Type B	22	AM-CCM-CB1200-GT-TC22	Stationary knife
4	AM-CCM-CB1200-GT-TC04	small gear	23	AM-CCM-CB1200-GT-TC23	Enter pulley
5	AM-CCM-CB1200-GT-TC05	Deep groove ball bearing	24	AM-CCM-CB1200-GT-TC24	Deep groove ball bearing
6	AM-CCM-CB1200-GT-TC06	Feed roller	25	AM-CCM-CB1200-GT-TC25	6205 Bearing block
7	AM-CCM-CB1200-GT-TC07	Right gourd bearing seat	26	AM-CCM-CB1200-GT-TC26	slash
8	AM-CCM-CB1200-GT-TC08	Elastic retainer for shaft	27	AM-CCM-CB1200-GT-TC27	Cutter shaft welding
9	AM-CCM-CB1200-GT-TC09	Hang the big gear	28	AM-CCM-CB1200-GT-TC28	Large half round head square neck bolt
10	AM-CCM-CB1200-GT-TC10	Stop small gear ring	29	AM-CCM-CB1200-GT-TC29	Hexagon nut Class C
11	AM-CCM-CB1200-GT-TC11	6204 bearing block	30	AM-CCM-CB1200-GT-TC30	Standard elastic washer
12	AM-CCM-CB1200-GT-TC12	Deep groove ball bearing	31	AM-CCM-CB1200-GT-TC31	Sliding coupling
13	AM-CCM-CB1200-GT-TC13	Feed roller	32	AM-CCM-CB1200-GT-TC32	Plain flat key - Type
14	AM-CCM-CB1200-GT-TC14	Hexagon flange nut	33	AM-CCM-CB1200-GT-TC33	Elastic retainer for type A shaft
15	AM-CCM-CB1200-GT-TC15	Elastic retainer for type A shaft	34	AM-CCM-CB1200-GT-TC34	Handle sleeve
16	AM-CCM-CB1200-GT-TC16	Elastic retainer for A-hole	35	AM-CCM-CB1200-GT-TC35	Gear lever
17	AM-CCM-CB1200-GT-TC17	Deep groove ball bearing	36	AM-CCM-CB1200-GT-TC36	lock plate
18	AM-CCM-CB1200-GT-TC18	Reversing gear	37	AM-CCM-CB1200-GT-TC37	Hexagonal nut - Class C
19	AM-CCM-CB1200-GT-TC19	Left gourd bearing seat			



## INSPECTION & MAINTAINANCE

For safety use, make sure the machine is cleaned every three months. Before working, make sure to inspect the filter and the nozzle and ensure there is no impurity. After working, make sure there is no water in the pump and the hose.

If the machine needs to be repaired in the guarantee period, please return the machine to the shop. You need to provide the certificate of purchase on order to repair or get the substitute.

Before packing, the machine should be cleaned, then use closed packaging, packaging should be firm. Store the machine in dry place.

For transportation safety. The machine should comply with ISTA.

Do not dispose of electrical machines as unsorted municipal waste, use separate collection facilities.

If electrical machines are disposed of in landfills or dumps, hazardous substances can leak into the ground water and get into the food chain, damaging your health and well being.

When replacing old machines with new ones, the retailer is legally obligated to take back your old machine for disposals at least free of charge.

# WARRANTY CARD

## CUSTOMER COPY

DATE _____	DATE OF DELIVERY _____	DEALERS OFFICIAL SEAL	DEALERS SIGN _____
PURCHASERS NAME & ADDRESS _____ _____ _____	<div>CUSTOMER SIGN</div>	<div></div>	
PRODUCT NAME	PRODUCT SERIAL NO.	INVOICE/DN NO.	
<div></div>	<div></div>	<div></div>	
I/Will accept the terms and conditions of warranty as in the warranty card			

## DEALERS COPY

DATE _____	DATE OF DELIVERY _____	DEALERS OFFICIAL SEAL	DEALERS SIGN _____
PURCHASERS NAME & ADDRESS _____ _____ _____	<div>CUSTOMER SIGN</div>	<div></div>	
PRODUCT NAME	PRODUCT SERIAL NO.	INVOICE/DN NO.	
<div></div>	<div></div>	<div></div>	
I/Will accept the terms and conditions of warranty as in the warranty card			

## COMPANY COPY

DATE _____	DATE OF DELIVERY _____	DEALERS OFFICIAL SEAL	DEALERS SIGN _____
PURCHASERS NAME & ADDRESS _____ _____ _____	<div>CUSTOMER SIGN</div>	<div></div>	
PRODUCT NAME	PRODUCT SERIAL NO.	INVOICE/DN NO.	
<div></div>	<div></div>	<div></div>	
I/Will accept the terms and conditions of warranty as in the warranty card			

1. LIMITED WARRANTY PERIOD : For a period of six months from the date of Sale / delivery of the product which ever is earlier. 2. LIMITED WARRANTY OBLIGATION : Replacement of defective part(s) by authorized dealer are free of charges. If found defective by reasons of defective material / poor workmanship, parts will be replaced and there will be no value re-imbursement. 3. TERMS & CONDITIONS : a. Claims under warranty will be accepted on submission of Warranty Card duly filled and stamped by authorized dealer together with the original purchase document. : b. Shipping / transportation / Incidental charges incurred in replacing defective parts under warranty shall be borne by the purchaser

WARRANTY null & void if  
(i) Lack of maintenance, (ii) Incorrect use of the machine or tampering, (iii) Use of non-genuine spare parts, (iv) Usage of acids, solvents, or any flammable materials, (v) Non-usage of filter water / clear water / soft water & using water above 40°C temperature, (vi) While using the pressure washers to draw water which is contaminated with dust & solvents (eg. paint thinners, gasoline, oil, etc.), (vii) Repair done by unauthorized service people, (viii) Those parts subject to wear & tear due to normal operations and plastic parts, rubber items etc, (ix) Loose connections, faulty electrical fixtures & fluctuations in power supply.  
4. Should any failure occur during or after the warranty period, customer does not have the right to interrupt payment / price discount.  
5. Incidental or consequential damages like inconvenience commercial loss, loss of tie, mental agony etc.  
6. Loss of any nature due to operation or non-operation is not covered under warranty.  
7. All free service are at Dealer's service point only.  
8. Warranty ceases if service is not done periodically.  
9. The attached card should be completed and returned to Ratnagiri Impex Pvt. Ltd. for registration immediately after sale / delivery.  
10. The warranty is void unless you register the warranty card with Ratnagiri Impex Pvt. Ltd.  
11. The decision of Ratnagiri Impex Pvt. Ltd., in settling the warranty is final in all respects.  
12. All disputes are subject to Bangalore Courts Jurisdiction

1. LIMITED WARRANTY PERIOD : For a period of six months from the date of Sale / delivery of the product which ever is earlier. 2. LIMITED WARRANTY OBLIGATION : Replacement of defective part(s) by authorized dealer are free of charges. If found defective by reasons of defective material / poor workmanship, parts will be replaced and there will be no value re-imbursement. 3. TERMS & CONDITIONS : a. Claims under warranty will be accepted on submission of Warranty Card duly filled and stamped by authorized dealer together with the original purchase document. : b. Shipping / transportation / Incidental charges incurred in replacing defective parts under warranty shall be borne by the purchaser.  
WARRANTY null & void if  
(i) Lack of maintenance, (ii) Incorrect use of the machine or tampering, (iii) Use of non-genuine spare parts, (iv) Usage of acids, solvents, or any flammable materials, (v) Non-usage of filter water / clear water / soft water & using water above 40°C temperature, (vi) While using the pressure washers to draw water which is contaminated with dust & solvents (eg. paint thinners, gasoline, oil, etc.), (vii) Repair done by unauthorized service people, (viii) Those parts subject to wear & tear due to normal operations and plastic parts, rubber items etc, (ix) Loose connections, faulty electrical fixtures & fluctuations in power supply.  
4. Should any failure occur during or after the warranty period, customer does not have the right to interrupt payment / price discount.  
5. Incidental or consequential damages like inconvenience commercial loss, loss of tie, mental agony etc.  
6. Loss of any nature due to operation or non-operation is not covered under warranty.  
7. All free service are at Dealer's service point only.  
8. Warranty ceases if service is not done periodically.  
9. The attached card should be completed and returned to Ratnagiri Impex Pvt. Ltd. for registration immediately after sale / delivery.  
10. The warranty is void unless you register the warranty card with Ratnagiri Impex Pvt. Ltd.  
11. The decision of Ratnagiri Impex Pvt. Ltd., in settling the warranty is final in all respects.  
12. All disputes are subject to Bangalore Courts Jurisdiction

1. LIMITED WARRANTY PERIOD : For a period of six months from the date of Sale / delivery of the product which ever is earlier. 2. LIMITED WARRANTY OBLIGATION : Replacement of defective part(s) by authorized dealer are free of charges. If found defective by reasons of defective material / poor workmanship, parts will be replaced and there will be no value re-imbursement. 3. TERMS & CONDITIONS : a. Claims under warranty will be accepted on submission of Warranty Card duly filled and stamped by authorized dealer together with the original purchase document. : b. Shipping / transportation / Incidental charges incurred in replacing defective parts under warranty shall be borne by the purchaser.  
WARRANTY null & void if  
(i) Lack of maintenance, (ii) Incorrect use of the machine or tampering, (iii) Use of non-genuine spare parts, (iv) Usage of acids, solvents, or any flammable materials, (v) Non-usage of filter water / clear water / soft water & using water above 40°C temperature, (vi) While using the pressure washers to draw water which is contaminated with dust & solvents (eg. paint thinners, gasoline, oil, etc.), (vii) Repair done by unauthorized service people, (viii) Those parts subject to wear & tear due to normal operations and plastic parts, rubber items etc, (ix) Loose connections, faulty electrical fixtures & fluctuations in power supply.  
4. Should any failure occur during or after the warranty period, customer does not have the right to interrupt payment / price discount.  
5. Incidental or consequential damages like inconvenience commercial loss, loss of tie, mental agony etc.  
6. Loss of any nature due to operation or non-operation is not covered under warranty.  
7. All free service are at Dealer's service point only.  
8. Warranty ceases if service is not done periodically.  
9. The attached card should be completed and returned to Ratnagiri Impex Pvt. Ltd. for registration immediately after sale / delivery.  
10. The warranty is void unless you register the warranty card with Ratnagiri Impex Pvt. Ltd.  
11. The decision of Ratnagiri Impex Pvt. Ltd., in settling the warranty is final in all respects.  
12. All disputes are subject to Bangalore Courts Jurisdiction

**FREE SERVICE COUPON (30DAYS/30HRS. WHICHEVER IS EARLIER)**

MODEL	<input type="text"/>	SERIAL NUMBER	<input type="text"/>
PDI DATE	SERVICE NO.	PURCHASE BILL NO.	DATE
<input type="text"/>	<input type="text"/>	<input type="text"/>	<input type="text"/>
DEALERS OFFICE SEAL	OPERATIONS		
<input type="text"/>	<div> <div> 1. Check and test the fuel mixture  3. Check , clean and adjust the spark plug  5. Check and sparken the cutting tools  7. Start and check the noise, vibration, loosen etc.. </div> <div> 2. check and clean the air filter  4. Check and adjust the carburetor tuning  6. Product familiarisation on usage  8. Routine maintenance and shortage. </div> </div>		

**FREE SERVICE COUPON (30DAYS/30HRS. WHICHEVER IS EARLIER)**

MODEL	<input type="text"/>	SERIAL NUMBER	<input type="text"/>
PDI DATE	SERVICE NO.	PURCHASE BILL NO.	DATE
<input type="text"/>	<input type="text"/>	<input type="text"/>	<input type="text"/>
DEALERS OFFICE SEAL	OPERATIONS		
<input type="text"/>	<div> <div> 1. Check and test the fuel mixture  3. Check , clean and adjust the spark plug  5. Check and sparken the cutting tools  7. Start and check the noise, vibration, loosen etc.. </div> <div> 2. check and clean the air filter  4. Check and adjust the carburetor tuning  6. Product familiarisation on usage  8. Routine maintenance and shortage. </div> </div>		

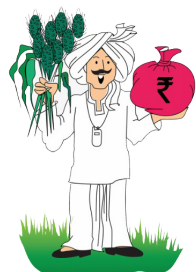
**FREE SERVICE COUPON (30DAYS/30HRS. WHICHEVER IS EARLIER)**

MODEL	<input type="text"/>	SERIAL NUMBER	<input type="text"/>
PDI DATE	SERVICE NO.	PURCHASE BILL NO.	DATE
<input type="text"/>	<input type="text"/>	<input type="text"/>	<input type="text"/>
DEALERS OFFICE SEAL	OPERATIONS		
<input type="text"/>	<div> <div> 1. Check and test the fuel mixture  3. Check , clean and adjust the spark plug  5. Check and sparken the cutting tools  7. Start and check the noise, vibration, loosen etc.. </div> <div> 2. check and clean the air filter  4. Check and adjust the carburetor tuning  6. Product familiarisation on usage  8. Routine maintenance and shortage. </div> </div>		

# DOS & DONTs

1. Always read the instruction manual supplied along with the equipments and understand the correct installation and operating procedures before attempting to use the equipments.
2. It is important to use the personal protection equipments such as head helmet with visor, ear defenders, goggles, safety gloves, cut resistant shoes, trousers and jackets while operating potentially dangerous machines
3. Avoid untrained persons using the equipments. Children must not be allowed to handle these equipments
4. Always use genuine spares and accessories in repairs and usage to derive maximum life of the equipments.
5. Always keep the equipments in good working condition to minimize loss of output as well as to reduce the pollution and save the environment
6. Do not use the machine within range of persons unless they wear protective clothing
7. Do not operate the machine when fatigued or under the influence of alcohol or drugs
8. When the machine is running, please maintain a constant water supply. Without water circulation will damage the sealing rings of the machine.
9. For more query kindly contact for our Service Center/Dealer/ franchise

## AGRIMATE MULTI PURPOSE EQUIPMENT ANYWHERE - ANYTIME - ANY CROP



**ratnagiri<sup>®</sup>  
impeX**

BRINGING YOU THE FUTURE... NOW

IMPORTED & MARKETING BY,  
**RATNAGIRI IMPEX PVT., LTD.,**

**Annapurna House, #1 / 1G, 7th Cross, New  
Guddadahalli Mysore Road, Bangalore - 560 026  
Missed Call : 7393 938 938 Email: [ask@agrimart.in](mailto:ask@agrimart.in)**