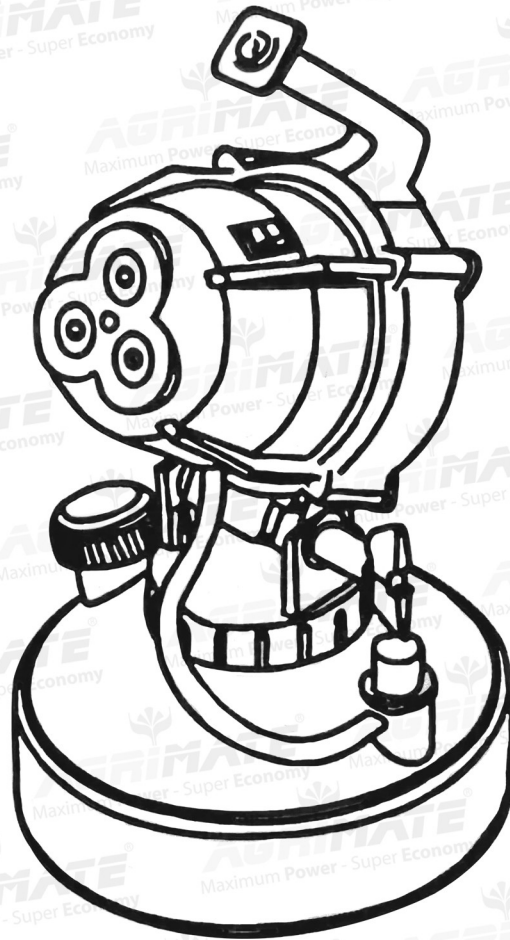


AGRIMATE[®]
Maximum Power - Super Economy

AGRIMATE
ELECTRIC COLD FOGGER SPRAYER
AM-CFS-4000



BEFORE OPERATING THIS MACHINE,
PLEASE READ THESE INSTRUCTIONS CAREFULLY

DISCLAIMER: DUE TO CONSTANT UPGRADATION, FEATURES AND SPECIFICATIONS ARE SUBJECT TO CHANGE WITHOUT NOTICE



Dear Sir/Madam,

Thank you for choosing Agrimate product. You are the proud owner of high technology and durable machine. Trust that our franchisee/dealer installed the product and explained you about the usage and service instructions. Please visit our authorised dealer for your future requirement of our other equipments, genuine spares, accessories and service. Service coupons are attached with this manual and you can avail free service.

About Ratnagiri

We import and market of high quality of agriculture wide range of equipment's Which we are selling through our authorized franchisee or dealer network. We are in this field from past 20 years serving the former community. For further details, you may please visit our website www.agrimart.in.

Range of Brands



Our Retail Formats



Agriculture | Horticulture | Sericulture | Plantations | Forestry | Garden | Health care

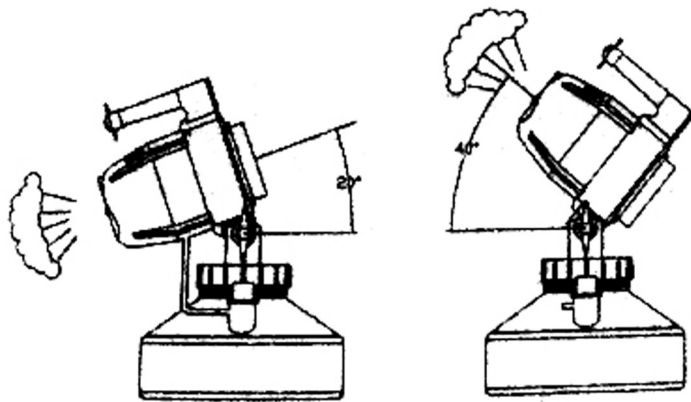
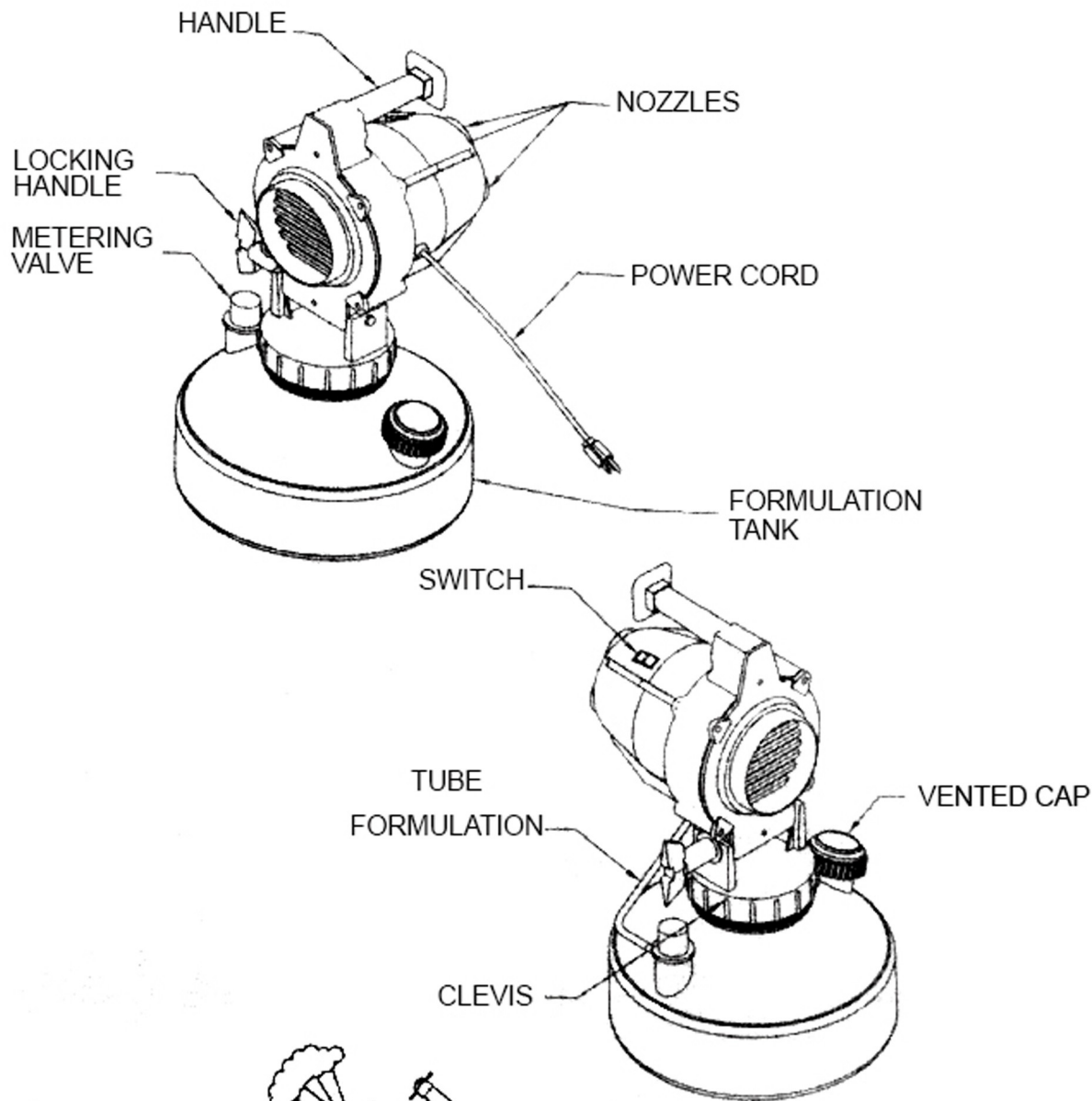
SPECIFICATIONS

This is an electric “Cold Fog” ULV/Mister with three rugged nylon nozzles. This device is intended for applications of both oil bases (following necessary precautions) and water based chemical treatments including wet table powders and wet flowerless. The body and tank are made of high-density chemical resistant polyethylene. The applicator is useful for dispensing most chemicals which are lab led for aerosol or mist applications such as disinfectants, deodorizers, germicides, insecticides, etc., in locations like hospitals, schools, nursing homes, greenhouses, stables, warehouses, homes and farm buildings. The particle sizes generated range from 7 to 30 microns VMD, depending on the flow rate and viscosity of the materials.

SPECIFICATIONS

Name of the commodity	Agrimate Electric Cold Fog Sprayer
Name of the Model	AM-CFS-4000
Capacity	4L
Voltage	110V
N.W	3KG
G.W	3.86Kg

MAJOR COMPONENTS



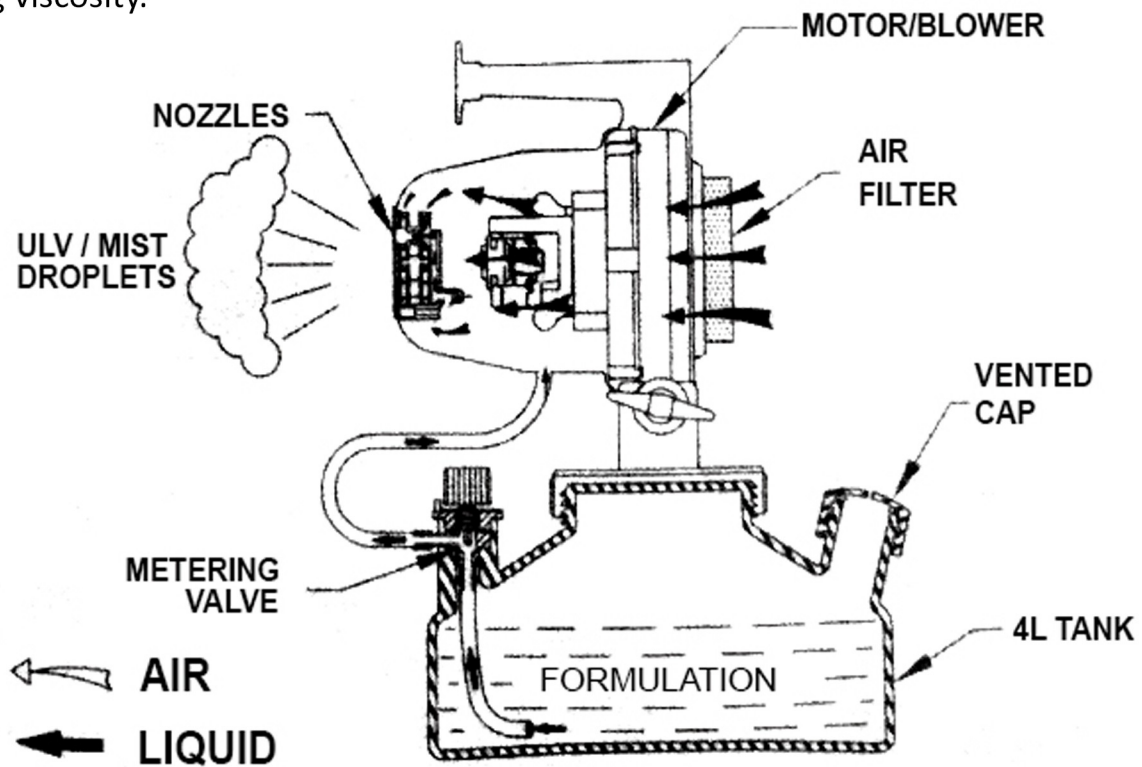
NOZZLES DIRECTION

The machine allows adjusting the angle in a 60° range, up to 40° above horizontal, and -20° below horizontal. Use the Locking Handle to adjust the angle.

WORKING PRINCIPLES

The machine consists of a motor/blower assembly, a nozzle system, nozzle housing, a formulation tank and a metering valve, the various components are identified in a diagram below. The blower is a single stage/centrifugal impeller/axial flow driven by a universal motor operating at a speed of about 20,000 RPM. The blower moves a large amount of air through the nozzle system consisting of three individual nozzles, each of which has two sets of directing vanes. One vane set causes the air to be rotated clockwise and the other causes forces shears the material being dispensed into small particles. Further, the air rushing by the specially shaped liquid tubes creates a negative pressure in the liquid tube. This negative pressure causes the liquid to be drawn from the formulation tank through the control valve and into the nozzle system where it is pneumatically sheared into aerosol or mist size droplets, after break-up, the droplets are driven away from the machine by the air passing through the nozzle system,

Generally, the size of the output droplets increases with increasing flow rate and with increasing viscosity.



FLUID SYSTEMS DIAGRAM

SAFETY PRECAUTIONS

WARNING

READ AND UNDERSTAND THESE SAFETY PRECAUTIONS BEFORE OPERATING MACHINE. FAILURE TO PROPERLY FOLLOW THESE PRECAUTIONS MAY LEAD TO A FIRE, EXPOSITION OR ELECTRIC SHOCK HAZARD.

1. ELECTRIC POWER:

This machine uses electrical power at common commercially available voltages. When directly contacted, such voltages are hazardous to human life. All precautions commonly applicable to the use of the electric power general are applicable to the use of this machine. This machine is safety ground. Do not disconnect this machine to a two-wire system. This defeats the purpose of the safety ground and may result in a hazardous electrical shock conditions.

When making repairs on the machine, use an area or work bench that is dry and not electrically conductive. Dry natural wood and plastics are generally non-conductive at the working voltages of this machine. Metals are usually conductive. Do not probe inside the machine.

Extension cords must be properly sized and rated for the voltage, current and length of an individual cord. Consult the nameplate current and voltage rating of your machine and the marked rating of the extension cord. A single extension cord only should be used.

When two or more extension cords are not only hazardous, but may result in poor machine uses oil-based formulation, the extension cord should be rated as oil resistant.

2. Formulations:

Many formulations are combustible; that is, they all can be caused to burn. This is true of even high flash point or "no" flash point formulation (fine particle dust in a grain mill has "no" flash point). A combustible liquid vapour can more easily be ignited because it more readily from a uniform mixture with the air which contains the Oxygen needed for combustion. However, spaced are capable of propagating flame from one to another once an ignition starts. A good analogy is the grain mill explosion. Although the fine particle dust in a grain mill has "no" flash point, the phenomena of the grain mill explosion is an all too common occurrence.

Where a high flash point or no flash point liquid formulation will ignite for less readily than a low flash point liquid and for this reason is strongly advocated. The higher or “no” flash point formulation can ignite if the proper conditions exists. These conditions are basically two: 1. A sufficiently volume of liquid in the form of fine particles suspended in the air; and 2. A sufficiently high energy source of ignition.

3. AEROSOL CONCENTRATION:

It has been fully established that an acceptable level of liquid in the atmosphere is one gallon per 50,000 cubic feet (2.47 Litter per 1,000 cubic meters). There is a safety margin of at least 5 to 1 in this figure.

4. AEROSOL IGNITION:

If a combustible atmosphere is established or a combustible deposit is laid down, a source of ignition may cause a fire. Sources of ignition can be gas or oil pilot lights or sparks from electrical controls. Therefore, it is strongly recommended that all such sources be eliminated by extinguishing all explosion in an enclosed space, the enclosed volume fogging time and required formulation volume should be carefully calculated.

PROPER AND OIMPROPER USE.

The following rules apply to the operation of this machine:

DO

Read the entire manual before operating the machine and pay particular attention to all CAUTIONS and WARNINGS.

Store formulation in its original labelled container.

Use an extension cord which is propped rated for voltage, current and length and which is free from nicks, cracks and other signs of prior abuse. For lengths up to 100 feet (30.5 meters) cord No. 12AWG wire are usually adequate.

Replace damaged or worn electric cord immediately

Turn the flow valve COLCKWISE to the OFF position after each spray application while the motor is still operating to allow clearing of knocked over with the valve remaining open.

Always comply with any requirements for protective clothing, goggles, gloves, facial masks or respirator required by the formulation label.

Ensure that formulation are applied only in strict compliance with the formulation label as well as local state and federal regulations.

DO NOT

- Do not spray flammable liquids near open flame or other source of ignition.
- Do not use a machine that is broken or damaged in any way.
- Do not alter the machine by adding or removing parts.
- Do not restrict the motor blower inlet area.
- Do not tamper with the output nozzle.
- Do not allow the machine operate unattended.
- Do not apply more than one gallon of formulation per 50.000 cubic feet (2.7 Litters per 1,000 cubic meters) enclosed space. Exceeding this concentration is both hazardous and wasteful.

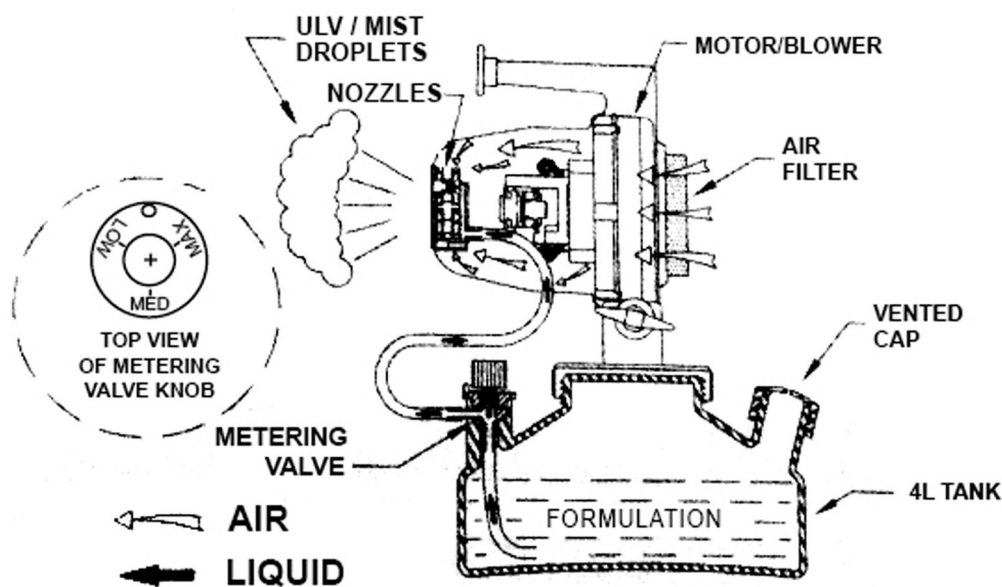
MAINTENANCE

1. Periodically clean the formulation tank using a hot water/ detergent solution. Fully open the machine valve and operate the machine for 3 to 5 minutes, flushing the solution through the valve, lines and nozzle.
2. Examine the electrical cord for evidence of damage and replace any damaged cord immediately.
3. After 400-500 hours of operation, carefully remove the blower assembly and examine the brushes and the commutator bars of the blower motor. If brushes show excessive wear or damage, replace the blower assembly (see ITEM #24, page 10)
4. If it becomes necessary to disassemble the machine flow valve for cleaning be careful not to enlarge the metering orifice or damage the taper of the valve stem, as this will affect the calibration of the machine.

FLOW RATE

Turning the knob of the metering valve regulates the flow Rate. If the knob is rotated clockwise, the flow rate will be reduced. If the knob is rotated counterclockwise, the flow rate will be increased.

As reference, the average flow rate is shown in the bottom at three different positions of the metering valve knob when using water.



METERING VALVE SETTING	FLOW RATE AND DROPLET SIZE			
	FLOW RATE			DROPLET SIZE MICRONS - VOLUME MEDIA DIAMETER
	ML/MIN	L/H	GPH	
LOW (*)	70	4.2	1.1	14 MICRONS
MED (*)	225	13.2	3.6	20 MICRONS
MAX (*)	330	19.8	5.2	25 MICRONS

CAUTION: Read and follow the instructions on the formulation manufacturer's label and in the operation manual

CAUTION : Read and follow the instructions on the formulations manufacturer's label and in the operation manual

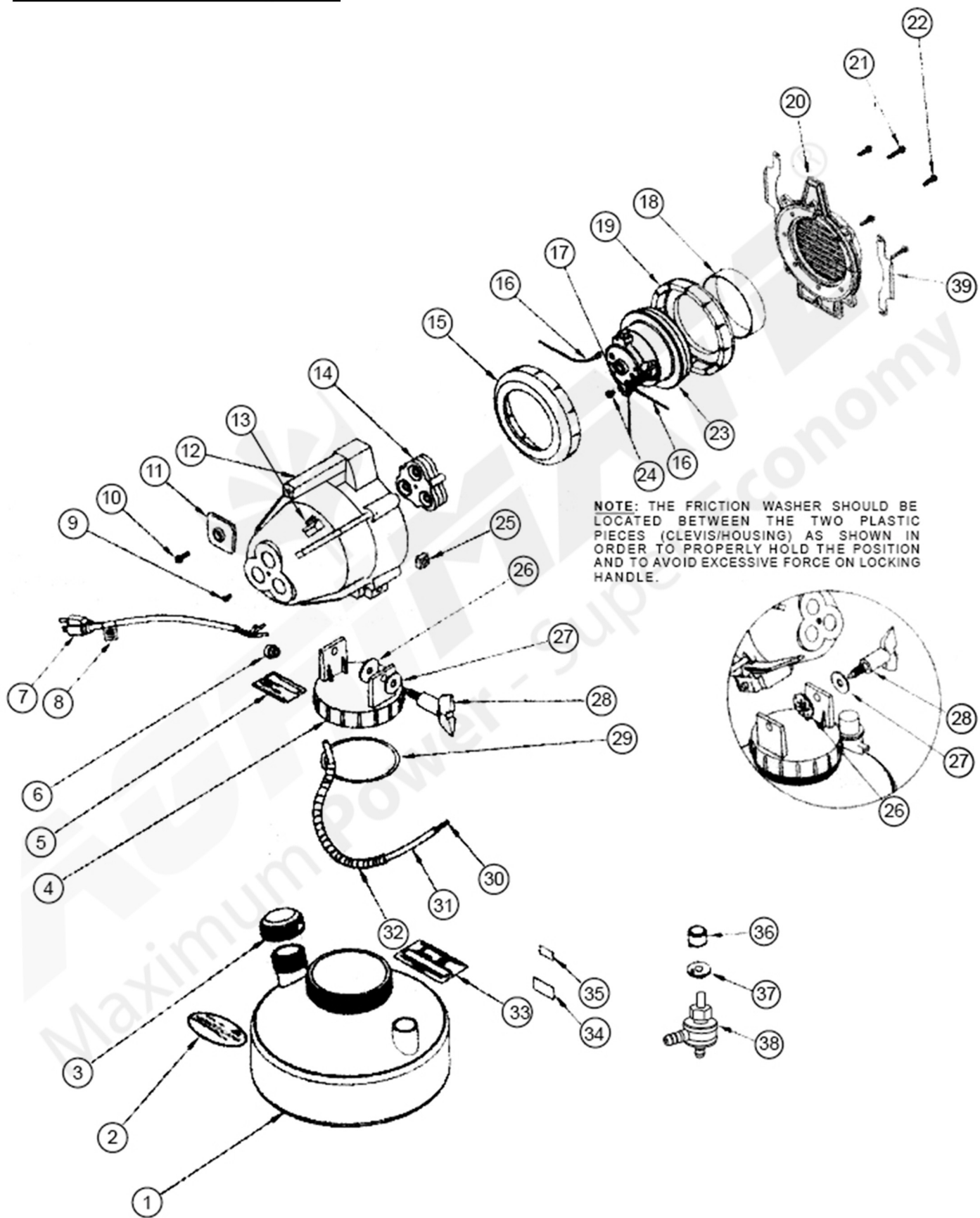
IMPORTANT : This device is designed to dispense formulations in a SPRAY (Cold Fog) . or MIST . Many of the formulations which may be dispensed with this machine require registration with approval by various government agencies.

(*) Note: All flow rate information in the table above is based on spraying water.

Thicker viscosity liquids will flow at lower than what is shown and produce bigger droplet size. Calibrate flow rate before attempting to spray .

PART DIAGRAM OF AM-CFS-4000 ELECTRIC COLD FOGGER SPRAYER

Machine Parts Diagram:



PART LIST OF AM-CFS-4000 ELECTRIC COLD FOGGER SPRAYER

Machine Parts:

SL. NO.	PART NUMBER	DESCRIPTION
1	AM-CFS-4000-01	Tank
2	AM-CFS-4000-02	Label
3	AM-CFS-4000-03	Cap Assembly
4	AM-CFS-4000-04	Clevis
5	AM-CFS-4000-05	Label
6	AM-CFS-4000-06	Strain connector
7	AM-CFS-4000-07	Power cord
8	AM-CFS-4000-08	Tag
9	AM-CFS-4000-09	Screw
10	AM-CFS-4000-10	Screw
11	AM-CFS-4000-11	Hand Stop
12	AM-CFS-4000-12	Housing
13	AM-CFS-4000-13	Switch
14	AM-CFS-4000-14	Nozzel Assembly
15	AM-CFS-4000-15	Gasket
16	AM-CFS-4000-16	Wire assembly
17	AM-CFS-4000-17	Washer
18	AM-CFS-4000-18	Sapcer
19	AM-CFS-4000-19	Gasket
20	AM-CFS-4000-20	Cover
21	AM-CFS-4000-21	Screw
22	AM-CFS-4000-22	Screw
23	AM-CFS-4000-23	Motor, Blower assembly

PART LIST OF AM-CFS-4000 ELECTRIC COLD FOGGER SPRAYER

Machine Parts:

SL. NO.	PART NUMBER	DESCRIPTION
24	AM-CFS-4000-24	Screw
25	AM-CFS-4000-25	Nut
26	AM-CFS-4000-26	Washer
27	AM-CFS-4000-27	Washer
28	AM-CFS-4000-28	Locking Handle
29	AM-CFS-4000-29	O-Ring
30	AM-CFS-4000-30	Spring
31	AM-CFS-4000-31	Tube
32	AM-CFS-4000-32	Guard, Tube
33	AM-CFS-4000-33	Label
34	AM-CFS-4000-34	Warning Label
35	AM-CFS-4000-35	Label
36	AM-CFS-4000-36	Knob Assembly
37	AM-CFS-4000-37	Valve Indicator
38	AM-CFS-4000-38	Valve assembly
39	AM-CFS-4000-39	Bracket

Warranty Card

CUSTOMER COPY



Purchaser's Name & Address

Date of Delivery

Product Name

AM-CFS-4000-ELECTRIC COLD FOGGER SPRAYER

Dealer's Office Seal

Product Serial No.

Dealer Sign _____

Invoice / DN No.

Customer Sign. _____

I/We accept the terms and conditions of Warranty as in the Warranty Card.

Warranty Card

DEALER'S COPY



Purchaser's Name & Address

Date of Delivery

Product Name

AM-CFS-4000-ELECTRIC COLD FOGGER SPRAYER

Dealer's Office Seal

Product Serial No.

Dealer Sign _____

Invoice / DN No.

Customer Sign. _____

I/We accept the terms and conditions of Warranty as in the Warranty Card.

Warranty Card

COMPANY COPY



Purchaser's Name & Address

Date of Delivery

Product Name

AM-CFS-4000-ELECTRIC COLD FOGGER SPRAYER

Dealer's Office Seal

Product Serial No.

Dealer Sign _____

Invoice / DN No.

Customer Sign. _____

I/We accept the terms and conditions of Warranty as in the Warranty Card.



1st Free Service Coupon

ISO 9001-2015
CERTIFIED COMPANY

FREE SERVICE COUPON (30 Days / 30 hrs (Which ever is earlier))

Model
AM-CFS-4000-ELECTRIC COLD FOGGER SPRAYER

Serial Number

PDI Date

Service No.

Purchase bill no. Date

Dealer's Office Seal & Signature

Customer Signature.....

Conditions: Operations listed have been performed to my entire satisfaction without any labour charges. Only consumables were charged.



agriculture | horticulture | sericulture | plantations | forestry | garden | health care

WARRANTY AND FREE SERVICE COUPON



2nd Free Service Coupon

ISO 9001-2015
CERTIFIED COMPANY

FREE SERVICE COUPON (60 Days / 60 hrs (Which ever is earlier))

Model
AM-CFS-4000-ELECTRIC COLD FOGGER SPRAYER

Serial Number

PDI Date

Service No.

Purchase bill no. Date

Dealer's Office Seal & Signature

Customer Signature.....

Conditions: Operations listed have been performed to my entire satisfaction without any labour charges. Only consumables were charged.



agriculture | horticulture | sericulture | plantations | forestry | garden | health care

WARRANTY AND FREE SERVICE COUPON



3rd Free Service Coupon

ISO 9001-2015
CERTIFIED COMPANY

FREE SERVICE COUPON (90 Days / 120hrs (Which ever is earlier))

Model
AM-CFS-4000-ELECTRIC COLD FOGGER SPRAYER

Serial Number

PDI Date

Service No.

Purchase bill no. Date

Dealer's Office Seal & Signature

Customer Signature.....

Conditions: Operations listed have been performed to my entire satisfaction without any labour charges. Only consumables were charged.



agriculture | horticulture | sericulture | plantations | forestry | garden | health care

WARRANTY AND FREE SERVICE COUPON

Do's & Don'ts

- Always read the instruction manual supplied along with the equipments and understand the correct installation and operating procedures before attempting to use the equipments.
- It is important to use the personal protection equipments such as head helmet with visor, ear defenders, goggles, safety gloves, cut resistant shoes, trousers and jackets while operating potentially dangerous machines.
- Avoid untrained persons using the equipments. Children must not be allowed to handle these equipments.
- Always use genuine spares and accessories in repairs and usage to derive maximum life of the equipments.
- Always keep the equipments in good working condition to minimize loss of output as well as to reduce the pollution and save the environment.
- Do not use the machine within range of persons unless they wear protective clothing.
- Do not operate the machine when fatigued or under the influence of alcohol or drugs.
- For more query kindly contact for our Service Center/Dealer/ franchise



Small and Timely Maintenance - Big Savings

MULTIPLY PROFITS

WITH OUR MULTI CROP, MULTI PURPOSE EQUIPMENTS

AGRI-MATE
Maximum Power - Super Economy

RANGE OF PRODUCTS



BATTERY /
MANUAL
SPRAYER



PORTABLE
POWER
SPRAYER



KNAPSACK
POWER
SPRAYER



ROTARY
TILLER



CHAFF
CUTTER



TEA
PRUNER



FOGGER



POWER
WEEDER



CHAINSAW



ROTARY
TILLER



LAWN
MOWER



HIGH
PRESSURE
WASHER



EARTH
AUGER



RIDE ON
MOWER

ITALY-GERMANY-USA
Oleo-Mac
our power, your passion

RANGE OF PRODUCTS

KASEI

Advanced Technology

Advanced Technology

RANGE OF PRODUCTS



BRUSH CUTTER
- PUSH TYPE



BRUSH CUTTER -
BACK PACK



BRUSH CUTTER -
MULTI TOOL



POLE PRUNER



BLOWER
BACK PACK



LAWN MOWER



BRUSH
CUTTER



BACK PACK
BC



TILLER



FOGGER



EARTH
AUGER

GP
Green Panther®

RANGE OF PRODUCTS

OUR RETAIL FORMATS



IMPORTERS & MARKETING BY:

Ratnagiri Impex Pvt. Ltd.

Annapurna House, # 1/1G,

7th Cross New Guddadahalli,

Mysore Road Bangalore - 560 026, India

Ph: 080-26985100/1/2

Email: info@ratnagiriimpex.com



TOLL FREE :
1800-425-3036

www.ratnagiriimpex.com

www.agrimart.in



ratnagiri impex
BRINGING YOU THE FUTURE... NOW

An ISO 9001:2015 Certified Company