

## USER MANUAL CORN HARVESTER+BAGGING AM-CRH-188FD

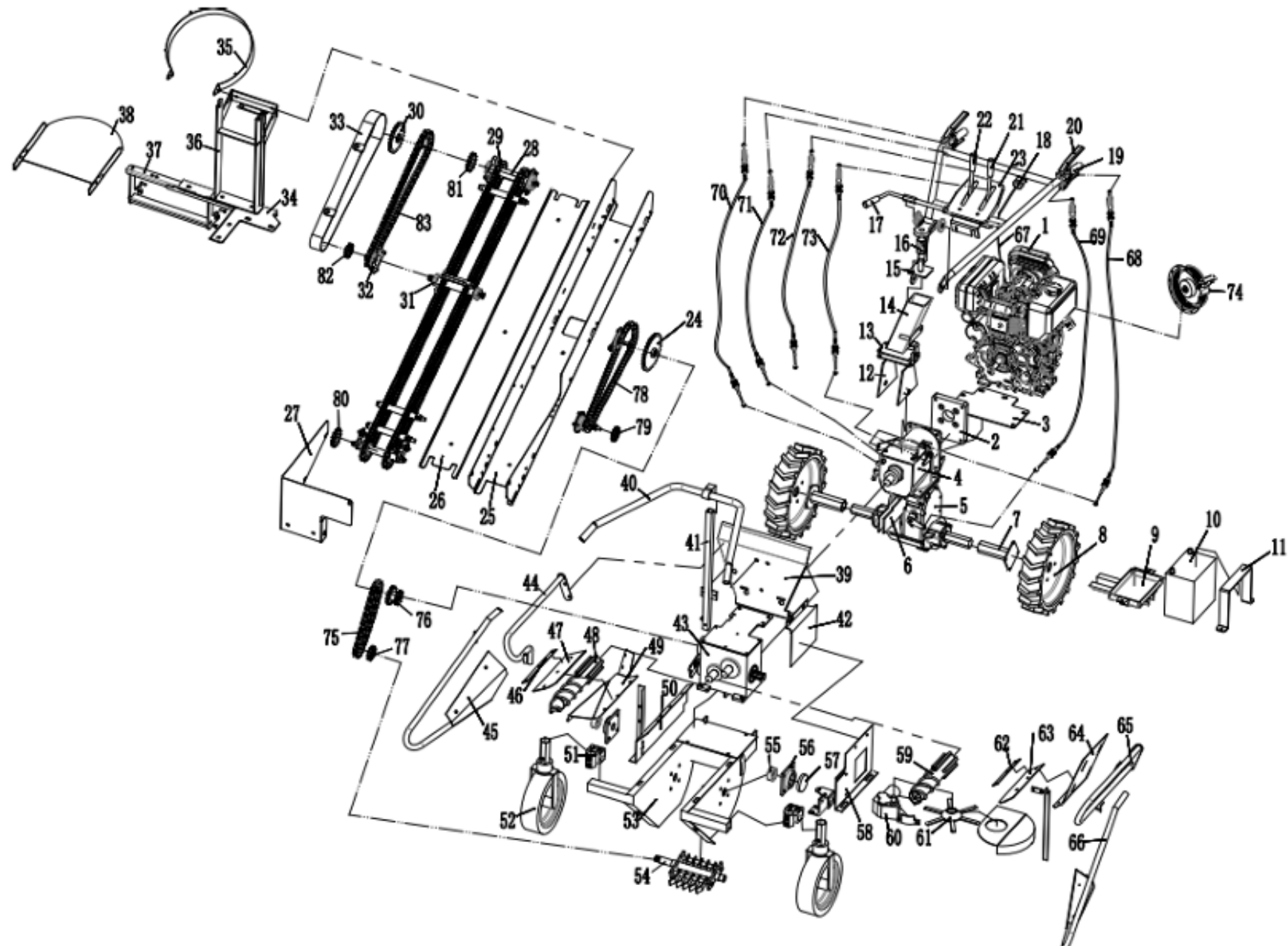


AN ISO 9001 : 2015 CERTIFIED COMPANY

## TECHNICAL SPECIFICATIONS

MODEL	AM-CRH-188FD
POWER	8.5KW/11HP
RPM	3600RPM
DISPLACEMENT	456CC
Harvesting Rows	1 No.
Row Spacing	570mm/60cm
Harvesting hourly productivity (hm <sup>2</sup> /h)☐	≥0.2

# DIAGRAM & SPARE PARTS LIST OF CORN HARVETSER



# DIAGRAM & SPARE PARTS LIST OF CORN HARVETSER

SL NO.	PART NO	DESCRIPTION	SL NO.	PART NO	DESCRIPTION
1	AM-CRH-188FD-01	Engine 188F keyway shaft	17	AM-CRH-188FD-17	Lock handle
2	AM-CRH-188FD-02	Engine transmission connection plate	18	AM-CRH-188FD-18	Electric (switch) lock
3	AM-CRH-188FD-03	Engine support plate	19	AM-CRH-188FD-19	Arm-rest frame
4	AM-CRH-188FD-04	Gear-box	20	AM-CRH-188FD-20	Walking clutch control handle
5	AM-CRH-188FD-05	Walking gear-box	21	AM-CRH-188FD-21	Shift control lever
6	AM-CRH-188FD-06	Transmission box connection plate	22	AM-CRH-188FD-22	Ear-picking clutch controlling lever
7	AM-CRH-188FD-07	Walking wheel connection pipe	23	AM-CRH-188FD-23	Control bracket
8	AM-CRH-188FD-08	Walking wheel	24	AM-CRH-188FD-24	Conveyer trough transmission chain sprocket
9	AM-CRH-188FD-09	Battery bracket	25	AM-CRH-188FD-25	Conveyer trough
10	AM-CRH-188FD-10	Battery	26	AM-CRH-188FD-26	Chain guard
11	AM-CRH-188FD-11	Battery pressure plate	27	AM-CRH-188FD-27	Head board
12	AM-CRH-188FD-12	Arm-rest frame support plate	28	AM-CRH-188FD-28	Conveyer trough drive shaft
13	AM-CRH-188FD-13	Underhandrail connection plate	29	AM-CRH-188FD-29	Transmission chain
14	AM-CRH-188FD-14	Arm-rest frame connection square tube	30	AM-CRH-188FD-30	Conveyer trough drive sprocket
15	AM-CRH-188FD-15	Connecting plate on armrest rack	31	AM-CRH-188FD-31	Deep groove ball bearing
16	AM-CRH-188FD-16	Locking pin shaft	32	AM-CRH-188FD-32	Bearing block

# DIAGRAM & SPARE PARTS LIST OF CORN HARVETSER

SL NO.	PART NO	DESCRIPTION	SL NO.	PART NO	DESCRIPTION
33	AM-CRH-188FD-33	Shield	50	AM-CRH-188FD-50	Right connection plate
34	AM-CRH-188FD-34	Unloading lower bracket	51	AM-CRH-188FD-51	Right support wheel connection pipe
35	AM-CRH-188FD-35	Loading bag support port	52	AM-CRH-188FD-52	Support wheel
36	AM-CRH-188FD-36	Conveyer trough bracket	53	AM-CRH-188FD-53	Grass cutter bracket
37	AM-CRH-188FD-37	Material tray bracket	54	AM-CRH-188FD-54	Grass cutter assembly
38	AM-CRH-188FD-38	Material tray	55	AM-CRH-188FD-55	Bearing
39	AM-CRH-188FD-39	Ear-picking device connection plate	56	AM-CRH-188FD-56	Bearing block
40	AM-CRH-188FD-40	Rear support corn stalk pole	57	AM-CRH-188FD-57	End cap
41	AM-CRH-188FD-41	Support pipe for support corn stalk	58	AM-CRH-188FD-58	Left connection plate of ear-picking device
42	AM-CRH-188FD-42	Left baffle of ear-picking device	59	AM-CRH-188FD-59	Left ear-picking roller
43	AM-CRH-188FD-43	Ear-picking rolling gear-box assembly	60	AM-CRH-188FD-60	Reel transmission box
44	AM-CRH-188FD-44	Right support corn stalk pole	61	AM-CRH-188FD-61	Reel assembly
45	AM-CRH-188FD-45	Right guide plate	62	AM-CRH-188FD-62	Left ear-picking pressure plate
46	AM-CRH-188FD-46	Right ear-picking pressure plate	63	AM-CRH-188FD-63	Left ear-picking plate
47	AM-CRH-188FD-47	Right ear-picking plate	64	AM-CRH-188FD-64	Ear-picking support board
48	AM-CRH-188FD-48	Right ear-picking roller	65	AM-CRH-188FD-65	Left support corn stalk pole
49	AM-CRH-188FD-49	Stock guide	66	AM-CRH-188FD-66	Left guide rod

SL NO.	PART NO	DESCRIPTION	SL NO.	PART NO	DESCRIPTION
67	AM-CRH-188FD-67	Switch wire			
68	AM-CRH-188FD-68	Walking clutch wire			
69	AM-CRH-188FD-69	Left turn pull wire			
70	AM-CRH-188FD-70	Reverse pull wire			
71	AM-CRH-188FD-71	Right turn pull wire			
72	AM-CRH-188FD-72	Ear-picking clutch pull wire			
73	AM-CRH-188FD-73	Shifting wire			
74	AM-CRH-188FD-74	Engine pull rope			
75	AM-CRH-188FD-75	Grass cutter drive chain			
76	AM-CRH-188FD-76	Grass cutter active chain wheel			
77	AM-CRH-188FD-77	The passive sprocket of the grass cutter			
78	AM-CRH-188FD-78	The conveyor trough is driven by a chain			
79	AM-CRH-188FD-79	Conveyor passive sprocket			
80	AM-CRH-188FD-80	Conveyor belt transmission sprocket			
81	AM-CRH-188FD-81	Conveyor belt drive sprocket			
82	AM-CRH-188FD-82	Conveyor right driving sprocket			
83	AM-CRH-188FD-83	Conveyor right drive chain			

# WARRANTY CARD

## CUSTOMER COPY

DATE _____	DATE OF DELIVERY _____	DEALERS OFFICIAL SEAL _____	DEALERS SIGN _____
PURCHASERS NAME & ADDRESS _____ _____ _____	<div>CUSTOMER SIGN</div>	<div></div>	
PRODUCT NAME	PRODUCT SERIAL NO.	INVOICE/DN NO.	
<div>AM-CRH-188FD</div>	<div></div>	<div></div>	

I/Will accept the terms and conditions of warranty as in the warranty card

## DEALERS COPY

DATE _____	DATE OF DELIVERY _____	DEALERS OFFICIAL SEAL _____	DEALERS SIGN _____
PURCHASERS NAME & ADDRESS _____ _____ _____	<div>CUSTOMER SIGN</div>	<div></div>	
PRODUCT NAME	PRODUCT SERIAL NO.	INVOICE/DN NO.	
<div>AM-CRH-188FD</div>	<div></div>	<div></div>	

I/Will accept the terms and conditions of warranty as in the warranty card

## COMPANY COPY

DATE _____	DATE OF DELIVERY _____	DEALERS OFFICIAL SEAL _____	DEALERS SIGN _____
PURCHASERS NAME & ADDRESS _____ _____ _____	<div>CUSTOMER SIGN</div>	<div></div>	
PRODUCT NAME	PRODUCT SERIAL NO.	INVOICE/DN NO.	
<div>AM-CRH-188FD</div>	<div></div>	<div></div>	

I/Will accept the terms and conditions of warranty as in the warranty card

1. LIMITED WARRANTY PERIOD : For a period of six months from the date of Sale / delivery of the product which ever is earlier. 2. LIMITED WARRANTY OBLIGATION : Replacement of defective part(s) by authorized dealer are free of charges. If found defective by reasons of defective material / poor workmanship, parts will be replaced and there will be no value re-imbursement. 3. TERMS & CONDITIONS : a. Claims under warranty will be accepted on submission of Warranty Card duly filled and stamped by authorized dealer together with the original purchase document. : b. Shipping / transportation / Incidental charges incurred in replacing defective parts under warranty shall be borne by the purchaser

WARRANTY null & void if

- (i) Lack of maintenance, (ii) Incorrect use of the machine or tampering, (iii) Use of non-genuine spare parts, (iv) Usage of acids, solvents, or any flammable materials, (v) Non-usage of filter water / clear water / soft water & using water above 40°C temperature, (vi) While using the pressure washers to draw water which is contaminated with dust & solvents (eg. paint thinners, gasoline, oil, etc.), (vii) Repair done by unauthorized service people, (viii) Those parts subject to wear & tear due to normal operations and plastic parts, rubber items etc, (ix) Loose connections, faulty electrical fixtures & fluctuations in power supply.
4. Should any failure occur during or after the warranty period, customer does not have the right to interrupt payment / price discount.
5. Incidental or consequential damages like inconvenience commercial loss, loss of tie, mental agony etc.
6. Loss of any nature due to operation or non-operation is not covered under warranty.
7. All free service are at Dealer's service point only.
8. Warranty ceases if service is not done periodically.
9. The attached card should be completed and returned to Ratnagiri Impex Pvt. Ltd. for registration immediately after sale / delivery.
10. The warranty is void unless you register the warranty card with Ratnagiri Impex Pvt. Ltd.
11. The decision of Ratnagiri Impex Pvt. Ltd., in settling the warranty is final in all respects.
12. All disputes are subject to Bangalore Courts Jurisdiction

1. LIMITED WARRANTY PERIOD : For a period of six months from the date of Sale / delivery of the product which ever is earlier. 2. LIMITED WARRANTY OBLIGATION : Replacement of defective part(s) by authorized dealer are free of charges. If found defective by reasons of defective material / poor workmanship, parts will be replaced and there will be no value re-imbursement. 3. TERMS & CONDITIONS : a. Claims under warranty will be accepted on submission of Warranty Card duly filled and stamped by authorized dealer together with the original purchase document. : b. Shipping / transportation / Incidental charges incurred in replacing defective parts under warranty shall be borne by the purchaser.

WARRANTY null & void if

- (i) Lack of maintenance, (ii) Incorrect use of the machine or tampering, (iii) Use of non-genuine spare parts, (iv) Usage of acids, solvents, or any flammable materials, (v) Non-usage of filter water / clear water / soft water & using water above 40°C temperature, (vi) While using the pressure washers to draw water which is contaminated with dust & solvents (eg. paint thinners, gasoline, oil, etc.), (vii) Repair done by unauthorized service people, (viii) Those parts subject to wear & tear due to normal operations and plastic parts, rubber items etc, (ix) Loose connections, faulty electrical fixtures & fluctuations in power supply.
4. Should any failure occur during or after the warranty period, customer does not have the right to interrupt payment / price discount.
5. Incidental or consequential damages like inconvenience commercial loss, loss of tie, mental agony etc.
6. Loss of any nature due to operation or non-operation is not covered under warranty.
7. All free service are at Dealer's service point only.
8. Warranty ceases if service is not done periodically.
9. The attached card should be completed and returned to Ratnagiri Impex Pvt. Ltd. for registration immediately after sale / delivery.
10. The warranty is void unless you register the warranty card with Ratnagiri Impex Pvt. Ltd.
11. The decision of Ratnagiri Impex Pvt. Ltd., in settling the warranty is final in all respects.
12. All disputes are subject to Bangalore Courts Jurisdiction

1. LIMITED WARRANTY PERIOD : For a period of six months from the date of Sale / delivery of the product which ever is earlier. 2. LIMITED WARRANTY OBLIGATION : Replacement of defective part(s) by authorized dealer are free of charges. If found defective by reasons of defective material / poor workmanship, parts will be replaced and there will be no value re-imbursement. 3. TERMS & CONDITIONS : a. Claims under warranty will be accepted on submission of Warranty Card duly filled and stamped by authorized dealer together with the original purchase document. : b. Shipping / transportation / Incidental charges incurred in replacing defective parts under warranty shall be borne by the purchaser.

WARRANTY null & void if

- (i) Lack of maintenance, (ii) Incorrect use of the machine or tampering, (iii) Use of non-genuine spare parts, (iv) Usage of acids, solvents, or any flammable materials, (v) Non-usage of filter water / clear water / soft water & using water above 40°C temperature, (vi) While using the pressure washers to draw water which is contaminated with dust & solvents (eg. paint thinners, gasoline, oil, etc.), (vii) Repair done by unauthorized service people, (viii) Those parts subject to wear & tear due to normal operations and plastic parts, rubber items etc, (ix) Loose connections, faulty electrical fixtures & fluctuations in power supply.
4. Should any failure occur during or after the warranty period, customer does not have the right to interrupt payment / price discount.
5. Incidental or consequential damages like inconvenience commercial loss, loss of tie, mental agony etc.
6. Loss of any nature due to operation or non-operation is not covered under warranty.
7. All free service are at Dealer's service point only.
8. Warranty ceases if service is not done periodically.
9. The attached card should be completed and returned to Ratnagiri Impex Pvt. Ltd. for registration immediately after sale / delivery.
10. The warranty is void unless you register the warranty card with Ratnagiri Impex Pvt. Ltd.
11. The decision of Ratnagiri Impex Pvt. Ltd., in settling the warranty is final in all respects.
12. All disputes are subject to Bangalore Courts Jurisdiction



**FREE SERVICE COUPON (30DAYS/30HRS. WHICHEVER IS EARLIER)**

MODEL

**AM-CRH-188FD**

SERIAL NUMBER

PDI DATE

SERVICE NO.

PURCHASE BILL NO.

DATE

DEALERS OFFICE SEAL

OPERATIONS

1. Check and test the fuel mixture
3. Check , clean and adjust the spark plug
5. Check and sparken the cutting tools
7. Start and check the noise, vibration, loosen etc..

2. check and clean the air filter
4. Check and adjust the carburetor tuning
6. Product familiarisation on usage
8. Routine maintenance and shortage.

**FREE SERVICE COUPON (30DAYS/30HRS. WHICHEVER IS EARLIER)**

MODEL

**AM-CRH-188FD**

SERIAL NUMBER

PDI DATE

SERVICE NO.

PURCHASE BILL NO.

DATE

DEALERS OFFICE SEAL

OPERATIONS

1. Check and test the fuel mixture
3. Check , clean and adjust the spark plug
5. Check and sparken the cutting tools
7. Start and check the noise, vibration, loosen etc..

2. check and clean the air filter
4. Check and adjust the carburetor tuning
6. Product familiarisation on usage
8. Routine maintenance and shortage.

**FREE SERVICE COUPON (30DAYS/30HRS. WHICHEVER IS EARLIER)**

MODEL

**AM-CRH-188FD**

SERIAL NUMBER

PDI DATE

SERVICE NO.

PURCHASE BILL NO.

DATE

DEALERS OFFICE SEAL

OPERATIONS

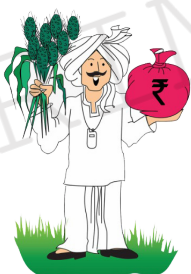
1. Check and test the fuel mixture
3. Check , clean and adjust the spark plug
5. Check and sparken the cutting tools
7. Start and check the noise, vibration, loosen etc..

2. check and clean the air filter
4. Check and adjust the carburetor tuning
6. Product familiarisation on usage
8. Routine maintenance and shortage.

# DOS & DONTs

1. Always read the instruction manual supplied along with the equipments and understand the correct installation and operating procedures before attempting to use the equipments.
2. It is important to use the personal protection equipments such as head helmet with visor, ear defenders, goggles, safety gloves, cut resistant shoes, trousers and jackets while operating potentially dangerous machines
3. Avoid untrained persons using the equipments. Children must not be allowed to handle these equipments
4. Always use genuine spares and accessories in repairs and usage to derive maximum life of the equipments.
5. Always keep the equipments in good working condition to minimize loss of output as well as to reduce the pollution and save the environment
6. Do not use the machine within range of persons unless they wear protective clothing
7. Do not operate the machine when fatigued or under the influence of alcohol or drugs
8. When the machine is running, please maintain a constant water supply. Without water circulation will damage the sealing rings of the machine.
9. For more query kindly contact for our Service Center/Dealer/ franchise

## AGRIMATE MULTI PURPOSE EQUIPMENT ANYWHERE - ANYTIME - ANY CROP



**ratnagiri<sup>®</sup>  
impex**

BRINGING YOU THE FUTURE... NOW

IMPORTED & MARKETING BY,  
**RATNAGIRI IMPEX PVT., LTD.,**

**Annapurna House, #1 / 1G, 7th Cross, New  
Guddadahalli Mysore Road, Bangalore - 560 026  
Missed Call : 7393 938 938 Email: [ask@agrimart.in](mailto:ask@agrimart.in)**