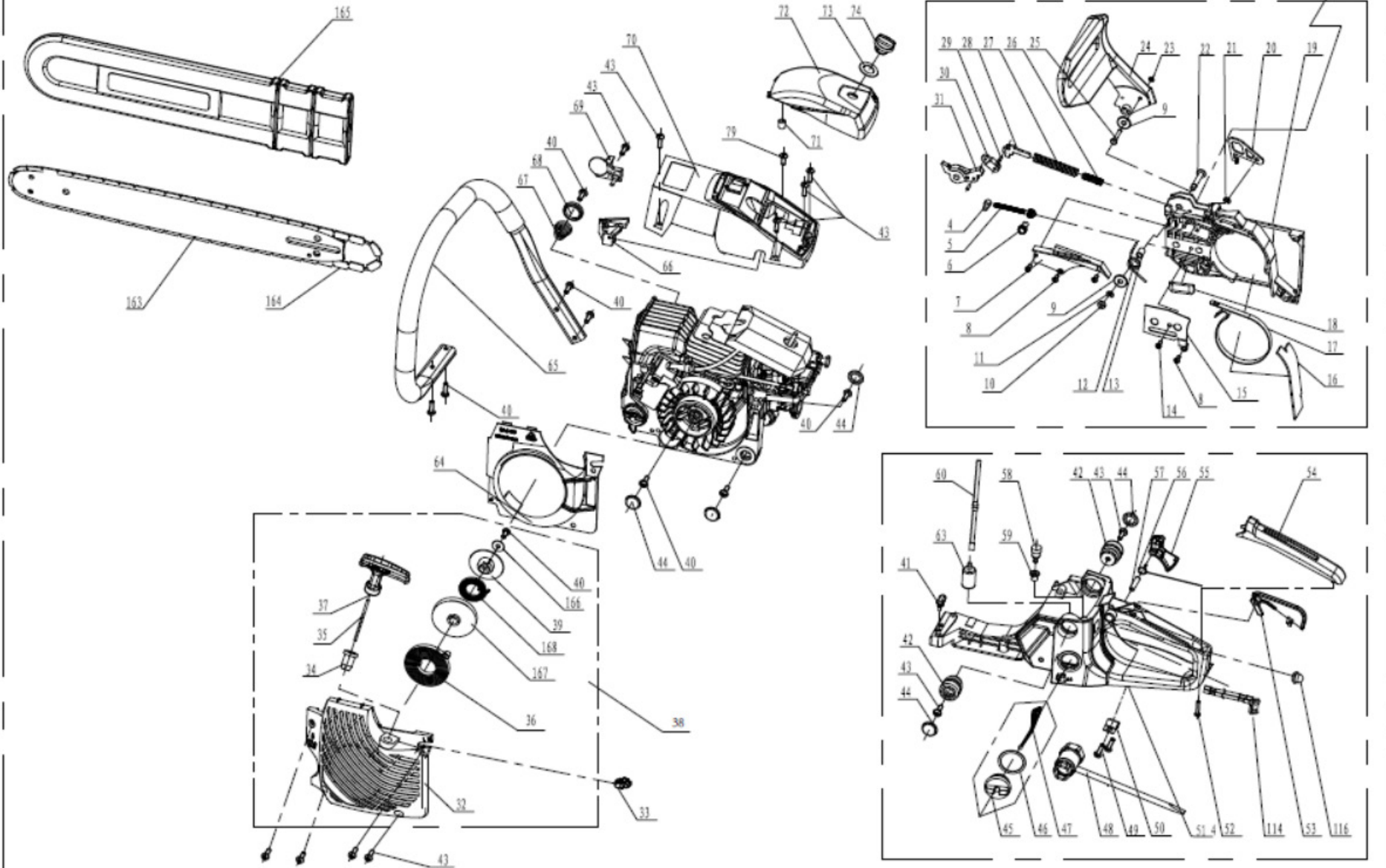


AGRIMATE CHAIN SAW AMCS-5918/22

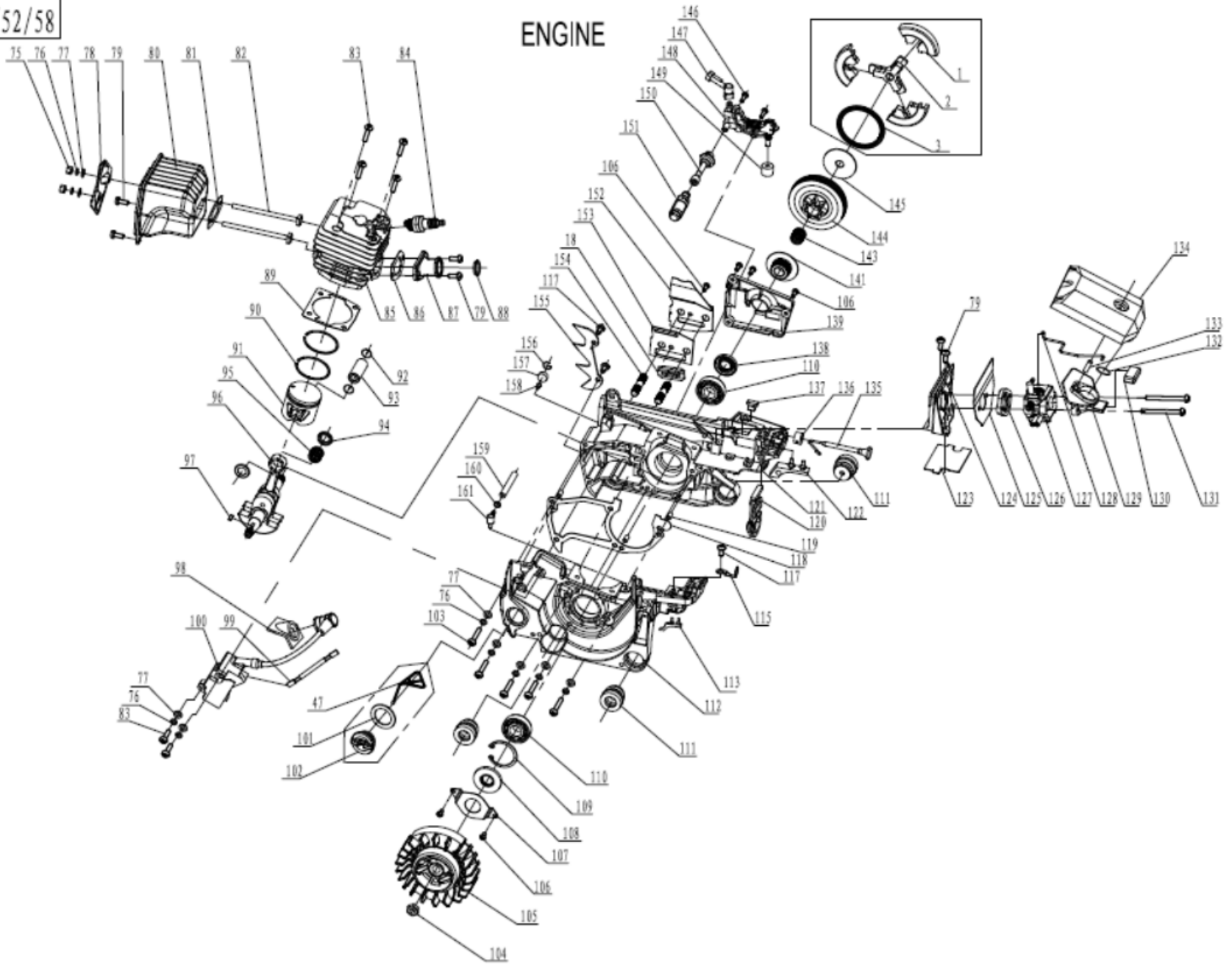


CHAIN SAW



CSB45/52/58

ENGINE



PART NO.	DESCRIPTION	PART NO.	DESCRIPTION
AM-CS-5918/22-01	Shoe block	AM-CS-5918/22-17	Brake spring belt
AM-CS-5918/22-02	Retainer	AM-CS-5918/22-18	Chain guide block
AM-CS-5918/22-03	Clutch extension spring	AM-CS-5918/22-19	Guide bar cover
AM-CS-5918/22-04	Tightener	AM-CS-5918/22-20	Limit board
AM-CS-5918/22-05	tightener screw	AM-CS-5918/22-21	Clip
AM-CS-5918/22-06	tghtener gear wheel	AM-CS-5918/22-22	Baffle pin
AM-CS-5918/22-07	Brake spring cover	AM-CS-5918/22-23	Clip
AM-CS-5918/22-08	Screw	AM-CS-5918/22-24	Brake guard
AM-CS-5918/22-09	Washer 6	AM-CS-5918/22-25	Limit pin
AM-CS-5918/22-10	Shock absorption rubber washer	AM-CS-5918/22-26	Assistant brake spring
AM-CS-5918/22-11	clip	AM-CS-5918/22-27	Brake spring
AM-CS-5918/22-12	brake guard torsion rod spring	AM-CS-5918/22-28	Brake control rod
AM-CS-5918/22-13	front guard tube	AM-CS-5918/22-29	Pin
AM-CS-5918/22-14	Screw	AM-CS-5918/22-30	Assistant lever
AM-CS-5918/22-15	Guide bar outer plate	AM-CS-5918/22-31	Main lever
AM-CS-5918/22-16	Dust shield	AM-CS-5918/22-32	Starter cover

PART NO.	DESCRIPTION	PART NO.	DESCRIPTION
AM-CS-5918/22-33	L H jacket	AM-CS-5918/22-49	Screw
AM-CS-5918/22-34	Rope guide cover	AM-CS-5918/22-50	Socket spanner clamping piece
AM-CS-5918/22-35	Starter rope	AM-CS-5918/22-51	Fuel tank
AM-CS-5918/22-36	Starter coil spring	AM-CS-5918/22-52	Screw
AM-CS-5918/22-37	Starter handle	AM-CS-5918/22-53	Throttle trigger A
AM-CS-5918/22-38	Starter Assy	AM-CS-5918/22-54	Handle cover
AM-CS-5918/22-39	Starter wheel A	AM-CS-5918/22-55	Throttle trigger B
AM-CS-5918/22-40	Screw	AM-CS-5918/22-56	Reset spring
AM-CS-5918/22-41	Oil tank shock absorption rubber	AM-CS-5918/22-57	Pin
AM-CS-5918/22-42	Long anti-vibration cushion base	AM-CS-5918/22-58	Balancer
AM-CS-5918/22-43	Screw	AM-CS-5918/22-59	Balancer block
AM-CS-5918/22-44	Shock absorption dust shield	AM-CS-5918/22-60	Fuel pipe
AM-CS-5918/22-45	Fuel tank cap		
AM-CS-5918/22-46	Fuel tank cap washer		
AM-CS-5918/22-47	Fuel cap retainer		

PART NO.	DESCRIPTION	PART NO.	DESCRIPTION
AM-CS-5918/22-63	Fuel filter	AM-CS-5918/22-78	Muffle cover
AM-CS-5918/22-114	Switch	AM-CS-5918/22-79	Screw
AM-CS-5918/22-64	Cover fan	AM-CS-5918/22-80	Muffle assy
AM-CS-5918/22-65	Front handle	AM-CS-5918/22-81	Muffle seal washer
AM-CS-5918/22-66	Idle adjustment guide sleeve	AM-CS-5918/22-82	Muffle bolt
AM-CS-5918/22-67	Taper spring	AM-CS-5918/22-83	Screw
AM-CS-5918/22-68	Taper spring block	AM-CS-5918/22-84	Spark plug
AM-CS-5918/22-69	Chain safeguard	AM-CS-5918/22-85	Cylinder
AM-CS-5918/22-70	Cylinder cover	AM-CS-5918/22-86	In pipe seal washer
AM-CS-5918/22-71	Shock absorption rubber washer	AM-CS-5918/22-87	In pipe
AM-CS-5918/22-72	Air filter cover	AM-CS-5918/22-88	Retainer
AM-CS-5918/22-73	Nut washer	AM-CS-5918/22-89	Cylinder seal washer
AM-CS-5918/22-74	Air filter nut	AM-CS-5918/22-90	Piston ring
AM-CS-5918/22-75	nut	AM-CS-5918/22-91	Piston
AM-CS-5918/22-76	Washer	AM-CS-5918/22-92	Piston pin circlip
AM-CS-5918/22-77	Spring washer	AM-CS-5918/22-93	Piston pin






PART NO.	DESCRIPTION	PART NO.	DESCRIPTION
AM-CS-5918/22-94	Needle bearing clip	AM-CS-5918/22-110	Bearing
AM-CS-5918/22-95	Needle bearing	AM-CS-5918/22-111	Short shock absorption block
AM-CS-5918/22-96	Crankshaft connecting rod ass'y	AM-CS-5918/22-112	Left crankshaft case
AM-CS-5918/22-97	Semicircular key	AM-CS-5918/22-113	Left shock absorption rubber
AM-CS-5918/22-98	Ignition coil protective cover	AM-CS-5918/22-116	Primer bulb
AM-CS-5918/22-99	Flameout wire	AM-CS-5918/22-117	Screw
AM-CS-5918/22-100	Ignition coil	AM-CS-5918/22-118	Crankshaft case gasket
AM-CS-5918/22-101	Oil cap washer	AM-CS-5918/22-119	Pin
AM-CS-5918/22-102	Oil cap	AM-CS-5918/22-120	Dust plate
AM-CS-5918/22-103	Screw	AM-CS-5918/22-121	Right crankshaft case
AM-CS-5918/22-104	Nut	AM-CS-5918/22-122	Right shock absorption rubber
AM-CS-5918/22-105	Fly wheel	AM-CS-5918/22-123	Air intake washer
AM-CS-5918/22-106	screw	AM-CS-5918/22-124	Air intake tube support
AM-CS-5918/22-107	Oil seal plate	AM-CS-5918/22-125	Air intake tube support gasket
AM-CS-5918/22-108	Oil seal	AM-CS-5918/22-126	Air intake flange
AM-CS-5918/22-109	Circlip	AM-CS-5918/22-127	Walbro carburetor

PART NO.	DESCRIPTION	PART NO.	DESCRIPTION
AM-CS-5918/22-127	Chinese Hualong carburetor	AM-CS-5918/22-145	Clutch washer
AM-CS-5918/22-128	Accelerator rod	AM-CS-5918/22-146	Screw
AM-CS-5918/22-129	Air intake	AM-CS-5918/22-147	Oil outlet nozzle
AM-CS-5918/22-130	Air intake cushion	AM-CS-5918/22-148	Oil pump
AM-CS-5918/22-131	Screw	AM-CS-5918/22-149	Sponge filter
AM-CS-5918/22-132	Gaskte,air filter	AM-CS-5918/22-150	Oil tube
AM-CS-5918/22-133	Screw	AM-CS-5918/22-151	Oil filter
AM-CS-5918/22-134	Air filter	AM-CS-5918/22-152	Guide bar inner plate
AM-CS-5918/22-135	Choke rod	AM-CS-5918/22-153	Guide bar inner plate gasket
AM-CS-5918/22-136	Choke rod seat	AM-CS-5918/22-154	Screw
AM-CS-5918/22-137	Shock absorption block	AM-CS-5918/22-155	Spiked bumper kit
AM-CS-5918/22-138	Oil seal	AM-CS-5918/22-156	Aeration nozzle circlip
AM-CS-5918/22-139	Oil pump cover plate	AM-CS-5918/22-157	Sponge filter block
AM-CS-5918/22-141	Worm	AM-CS-5918/22-158	Aeration nozzle
AM-CS-5918/22-143	Needle bearing	AM-CS-5918/22-159	Vacuum tube
AM-CS-5918/22-144	Clutch shell	AM-CS-5918/22-160	Vacuum tube circlip

PART NO.	DESCRIPTION	PART NO.	DESCRIPTION
AM-CS-5918/22-161	Vacuum nozzle		
AM-CS-5918/22-162	Nut		
AM-CS-5918/22-163	Chinese Kangxin bar		
AM-CS-5918/22-164	Chinese Kangxin Chain 18"		
AM-CS-5918/22-163	Chinese Kangxin bar 22'		
AM-CS-5918/22-164	Chinese Kangxin Chain 22"		
AM-CS-5918/22-165	Guide cover 18"		
AM-CS-5918/22-166	washer		
AM-CS-5918/22-167	Starter wheel B		
AM-CS-5918/22-168	Starter torsion spring		

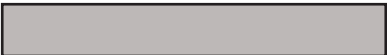




WARRANTY CARD

CUSTOMER COPY

DATE _____	DATE OF DELIVERY _____	DEALERS OFFICIAL SEAL	DEALERS SIGN _____
PURCHASERS NAME & ADDRESS _____ _____	 CUSTOMER SIGN		
PRODUCT NAME	PRODUCT SERIAL NO.	INVOICE/DN NO.	
			






I/Will accept the terms and conditions of warranty as in the warranty card

DEALERS COPY

DATE _____	DATE OF DELIVERY _____	DEALERS OFFICIAL SEAL	DEALERS SIGN _____
PURCHASERS NAME & ADDRESS _____ _____	 CUSTOMER SIGN		
PRODUCT NAME	PRODUCT SERIAL NO.	INVOICE/DN NO.	
			

I/Will accept the terms and conditions of warranty as in the warranty card

COMPANY COPY

DATE _____	DATE OF DELIVERY _____	DEALERS OFFICIAL SEAL	DEALERS SIGN _____
PURCHASERS NAME & ADDRESS _____ _____	 CUSTOMER SIGN		
PRODUCT NAME	PRODUCT SERIAL NO.	INVOICE/DN NO.	
			

I/Will accept the terms and conditions of warranty as in the warranty card

1. LIMITED WARRANTY PERIOD : For a period of six months from the date of Sale / delivery of the product which ever is earlier. 2. LIMITED WARRANTY OBLIGATION : Replacement of defective part(s) by authorized dealer are free of charges. If found defective by reasons of defective material / poor workmanship, parts will be replaced and there will be no value re-imbusement. 3. TERMS & CONDITIONS : a. Claims under warranty will be accepted on submission of Warranty Card duly filled and stamped by authorized dealer together with the original purchase document. : b. Shipping / transportation / Incidental charges incurred in replacing defective parts under warranty shall be borne by the purchaser

WARRANTY null & void if

- (i) Lack of maintenance, (ii) Incorrect use of the machine or tampering, (iii) Use of non-genuine spare parts, (iv) Usage of acids, solvents, or any flammable materials, (v) Non-usage of filter water / clear water / soft water & using water above 40°C temperature, (vi) While using the pressure washers to draw water which is contaminated with dust & solvents (eg. paint thinners, gasoline, oil, etc.), (vii) Repair done by unauthorized service people, (viii) Those parts subject to wear & tear due to normal operations and plastic parts, rubber items etc, (ix) Loose connections, faulty electrical fixtures & fluctuations in power supply.
- 4. Should any failure occur during or after the warranty period, customer does not have the right to interrupt payment / price discount.
- 5. Incidental or consequential damages like inconvenience commercial loss, loss of tie, mental agony etc.
- 6. Loss of any nature due to operation or non-operation is not covered under warranty.
- 7. All free service are at Dealer's service point only.
- 8. Warranty ceases if service is not done periodically.
- 9. The attached card should be completed and returned to Ratnagiri Impex Pvt. Ltd. for registration immediately after sale / delivery.
- 10. The warranty is void unless you register the warranty card with Ratnagiri Impex Pvt. Ltd.
- 11. The decision of Ratnagiri Impex Pvt. Ltd., in settling the warranty is final in all respects.
- 12. All disputes are subject to Bangalore Courts Jurisdiction

1. LIMITED WARRANTY PERIOD : For a period of six months from the date of Sale / delivery of the product which ever is earlier. 2. LIMITED WARRANTY OBLIGATION : Replacement of defective part(s) by authorized dealer are free of charges. If found defective by reasons of defective material / poor workmanship, parts will be replaced and there will be no value re-imbusement. 3. TERMS & CONDITIONS : a. Claims under warranty will be accepted on submission of Warranty Card duly filled and stamped by authorized dealer together with the original purchase document. : b. Shipping / transportation / Incidental charges incurred in replacing defective parts under warranty shall be borne by the purchaser.

WARRANTY null & void if

- (i) Lack of maintenance, (ii) Incorrect use of the machine or tampering, (iii) Use of non-genuine spare parts, (iv) Usage of acids, solvents, or any flammable materials, (v) Non-usage of filter water / clear water / soft water & using water above 40°C temperature, (vi) While using the pressure washers to draw water which is contaminated with dust & solvents (eg. paint thinners, gasoline, oil, etc.), (vii) Repair done by unauthorized service people, (viii) Those parts subject to wear & tear due to normal operations and plastic parts, rubber items etc, (ix) Loose connections, faulty electrical fixtures & fluctuations in power supply.
- 4. Should any failure occur during or after the warranty period, customer does not have the right to interrupt payment / price discount.
- 5. Incidental or consequential damages like inconvenience commercial loss, loss of tie, mental agony etc.
- 6. Loss of any nature due to operation or non-operation is not covered under warranty.
- 7. All free service are at Dealer's service point only.
- 8. Warranty ceases if service is not done periodically.
- 9. The attached card should be completed and returned to Ratnagiri Impex Pvt. Ltd. for registration immediately after sale / delivery.
- 10. The warranty is void unless you register the warranty card with Ratnagiri Impex Pvt. Ltd.
- 11. The decision of Ratnagiri Impex Pvt. Ltd., in settling the warranty is final in all respects.
- 12. All disputes are subject to Bangalore Courts Jurisdiction

1. LIMITED WARRANTY PERIOD : For a period of six months from the date of Sale / delivery of the product which ever is earlier. 2. LIMITED WARRANTY OBLIGATION : Replacement of defective part(s) by authorized dealer are free of charges. If found defective by reasons of defective material / poor workmanship, parts will be replaced and there will be no value re-imbusement. 3. TERMS & CONDITIONS : a. Claims under warranty will be accepted on submission of Warranty Card duly filled and stamped by authorized dealer together with the original purchase document. : b. Shipping / transportation / Incidental charges incurred in replacing defective parts under warranty shall be borne by the purchaser.

WARRANTY null & void if

- (i) Lack of maintenance, (ii) Incorrect use of the machine or tampering, (iii) Use of non-genuine spare parts, (iv) Usage of acids, solvents, or any flammable materials, (v) Non-usage of filter water / clear water / soft water & using water above 40°C temperature, (vi) While using the pressure washers to draw water which is contaminated with dust & solvents (eg. paint thinners, gasoline, oil, etc.), (vii) Repair done by unauthorized service people, (viii) Those parts subject to wear & tear due to normal operations and plastic parts, rubber items etc, (ix) Loose connections, faulty electrical fixtures & fluctuations in power supply.
- 4. Should any failure occur during or after the warranty period, customer does not have the right to interrupt payment / price discount.
- 5. Incidental or consequential damages like inconvenience commercial loss, loss of tie, mental agony etc.
- 6. Loss of any nature due to operation or non-operation is not covered under warranty.
- 7. All free service are at Dealer's service point only.
- 8. Warranty ceases if service is not done periodically.
- 9. The attached card should be completed and returned to Ratnagiri Impex Pvt. Ltd. for registration immediately after sale / delivery.
- 10. The warranty is void unless you register the warranty card with Ratnagiri Impex Pvt. Ltd.
- 11. The decision of Ratnagiri Impex Pvt. Ltd., in settling the warranty is final in all respects.
- 12. All disputes are subject to Bangalore Courts Jurisdiction



FREE SERVICE COUPON (30DAYS/30HRS. WHICHEVER IS EARLIER)

MODEL

SERIAL NUMBER

PDI DATE

SERVICE NO.

PURCHASE BILL NO.

DATE

DEALERS OFFICE SEAL

- 1. Check and test the fuel mixture
- 3. Check , clean and adjust the spark plug
- 5. Check and sparken the cutting tools
- 7. Start and check the noise, vibration, loosen etc..

OPERATIONS

- 2. check and clean the air filter
- 4. Check and adjust the carburetor tuning
- 6. Product familirisation on usage
- 8. Routine maintenance and shortage.

FREE SERVICE COUPON (30DAYS/30HRS. WHICHEVER IS EARLIER)

MODEL

SERIAL NUMBER

PDI DATE

SERVICE NO.

PURCHASE BILL NO.

DATE

DEALERS OFFICE SEAL

- 1. Check and test the fuel mixture
- 3. Check , clean and adjust the spark plug
- 5. Check and sparken the cutting tools
- 7. Start and check the noise, vibration, loosen etc..

OPERATIONS

- 2. check and clean the air filter
- 4. Check and adjust the carburetor tuning
- 6. Product familirisation on usage
- 8. Routine maintenance and shortage.

FREE SERVICE COUPON (30DAYS/30HRS. WHICHEVER IS EARLIER)

MODEL

SERIAL NUMBER

PDI DATE

SERVICE NO.

PURCHASE BILL NO.

DATE

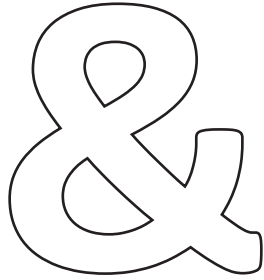
DEALERS OFFICE SEAL

- 1. Check and test the fuel mixture
- 3. Check , clean and adjust the spark plug
- 5. Check and sparken the cutting tools
- 7. Start and check the noise, vibration, loosen etc..

OPERATIONS

- 2. check and clean the air filter
- 4. Check and adjust the carburetor tuning
- 6. Product familirisation on usage
- 8. Routine maintenance and shortage.

DOS

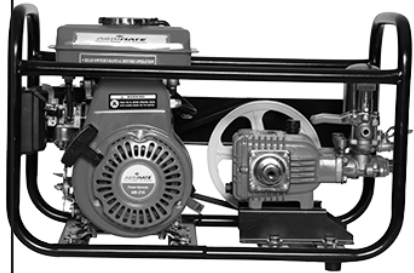
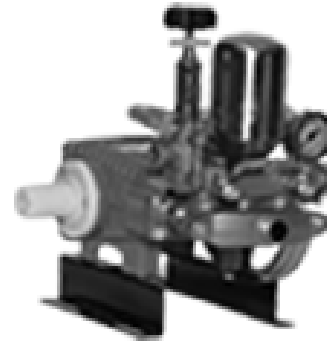


DONT'S

1. Always read the instruction manual supplied along with the equipments and understand the correct installation and operating procedures before attempting to use the equipments.
2. It is important to use the personal protection equipments such as head helmet with visor, ear defenders, goggles, safety gloves, cut resistant shoes, trousers and jackets while operating potentially dangerous machines
3. Avoid untrained persons using the equipments. Children must not be allowed to handle these equipments
4. Always use genuine spares and accessories in repairs and usage to derive maximum life of the equipments.
5. Always keep the equipments in good working condition to minimize loss of output as well as to reduce the pollution and save the environment
6. Do not use the machine within range of persons unless they wear protective clothing
7. Do not operate the machine when fatigued or under the influence of alcohol or drugs
8. When the machine is running, please maintain a constant water supply. Without water circulation will damage the sealing rings of the machine.
9. For more query kindly contact for our Service Center/Dealer/ franchise

Agrimate Army For Pest Control

ANY WHERE - ANY TIME - ANY CROP



Marketed by:
**ratnagiri
impex**
BRINGING YOU THE FUTURE... NOW

RATNAGIRI IMPEX PVT., LTD.,

Annapurna House, #1 / 1G, 7th Cross, New
Guddadahalli

Mysore Road, Bangalore - 560 026

Missed Call : 7393 938 938

Email: ask@agrimart.in