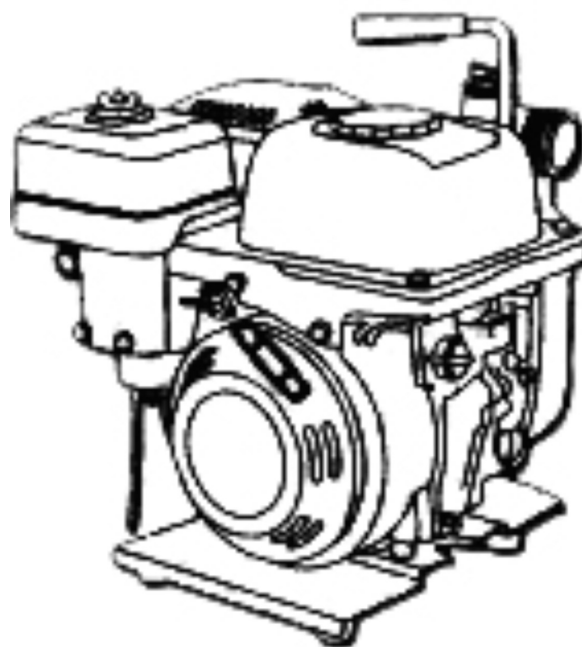


AGRIMATE GASOLINE ENGINE AM-EN-80D-GE



INTRODUCTION

Dear Sir/ Madam,

Thank you for choosing Agrimate product. You are the proud owner of high technology & durable machine. Trust that our Franchisee/Dealer installed the product & installed the product and explained you about the usage & service instructions. Please visit our authorised dealer for your future requirement of our other equipments, genuine spares, accessories and services. Service coupons are attached with this manual and you can avail free service to keep your machine fit always to use on demand.

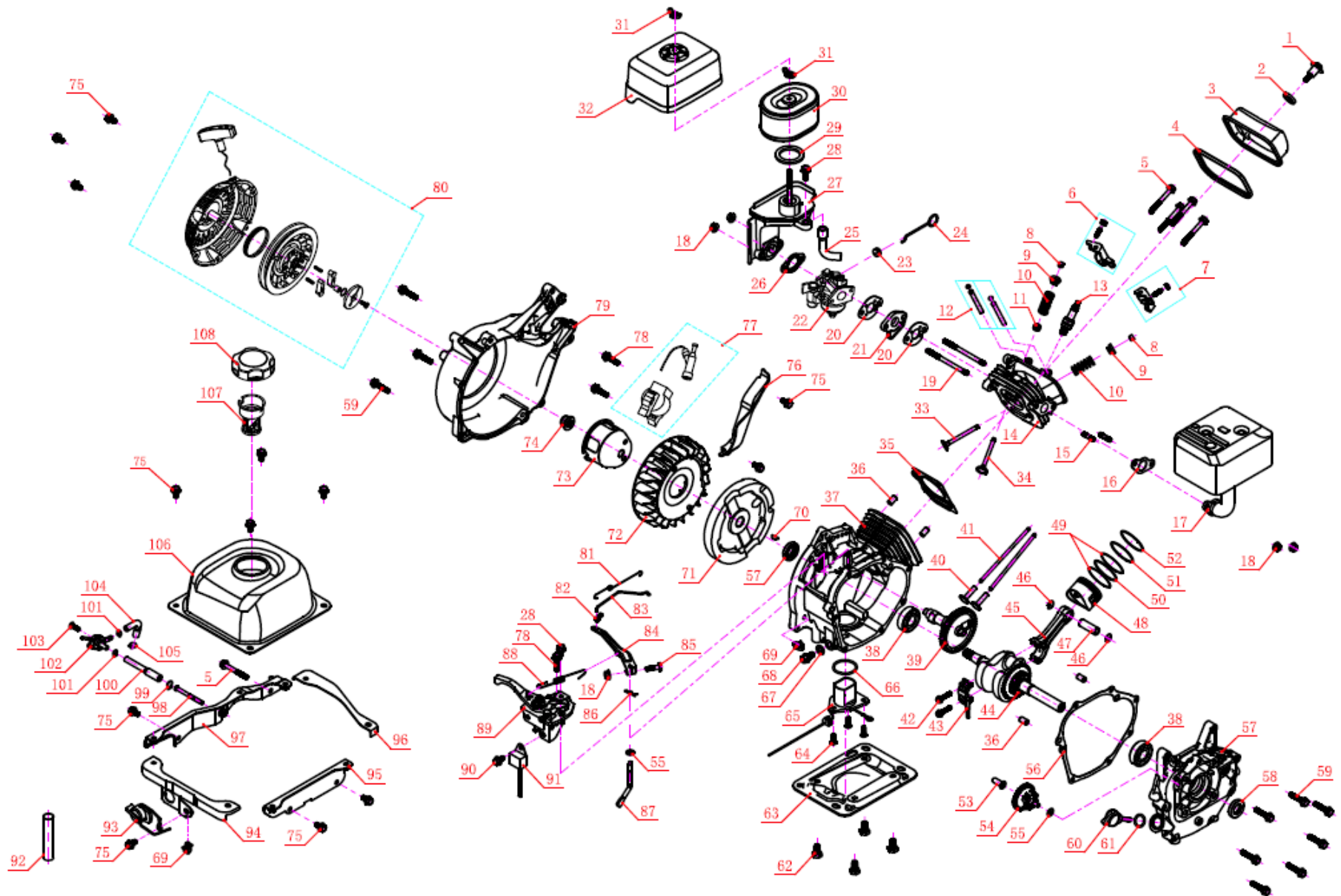
About Ratnagiri,

We import and market of high quality of agriculture wide range of equipments which we are selling through our authorised franchisee or dealer network. We are in this field from past years service the farmer. community. For further details, Please visit our website www.agrimart.in. & Give a missed call to 7393 938 938.

TECHNICAL SPECIFICATIONS

MODEL	AM-WP-80D-GE
RATED POWER	1.5KW/3600RPM
PUMP SIZE	38MM X 38MM
HEAD	21MTR
MAX. DISCHARGE	160LTR/MIN
DISCHARGE	75LTR /MIN
MAX. TOTAL HEAD	26 MTR
SPEED	3600RPM

ENGINE PART DIAGRAM & PART LIST OF GASOLINE ENGINE



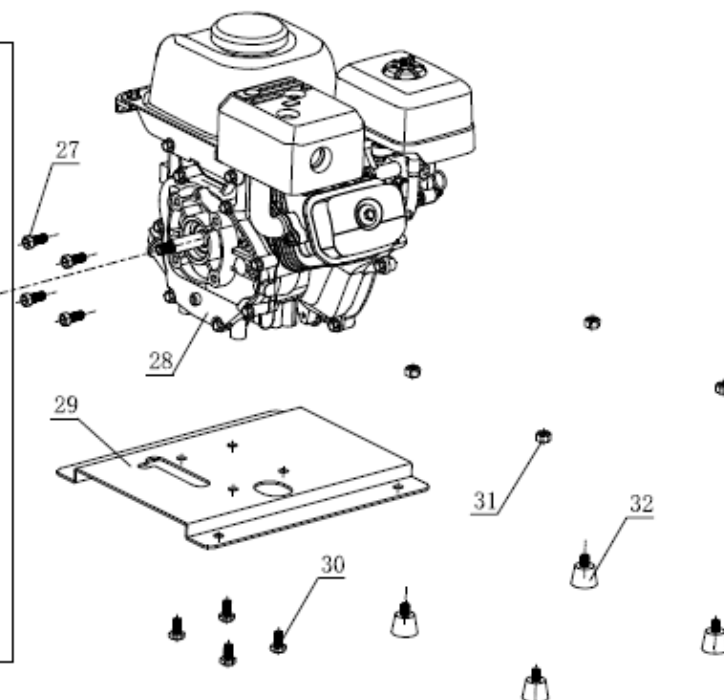
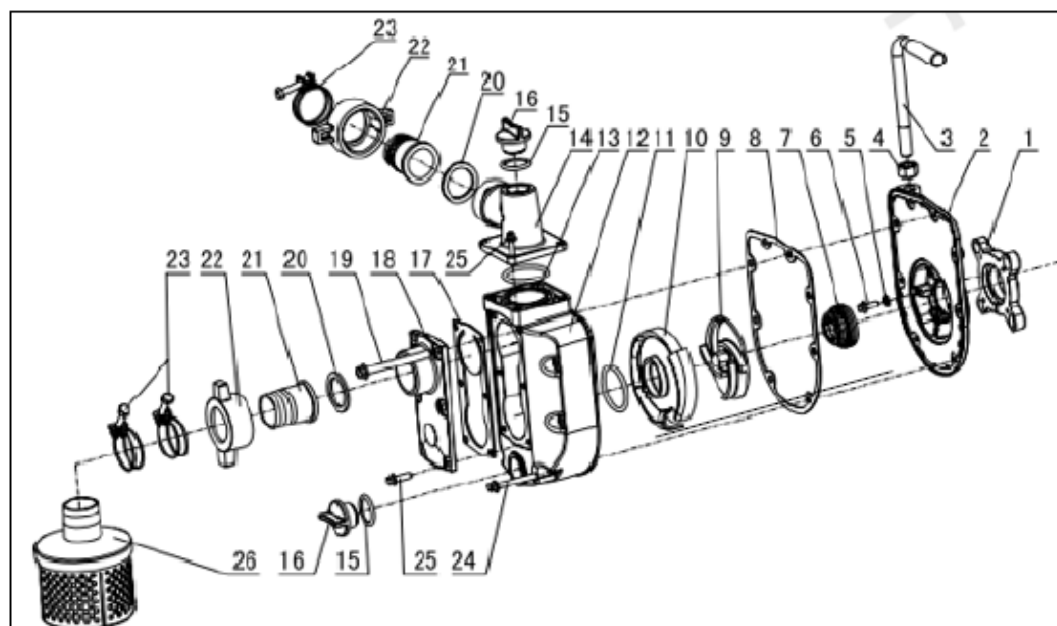
SL NO.	PART NO	DESCRIPTION	SL NO.	PART NO	DESCRIPTION
1	AM-WP-80D-GE -E01	Screw Pin	17	AM-WP-80D-GE -E17	Muffler
2	AM-WP-80D-GE -E02	Washer	18	AM-WP-80D-GE -E18	Nut
3	AM-WP-80D-GE -E03	Cylinder Cover	19	AM-WP-80D-GE -E19	Stud
4	AM-WP-80D-GE -E04	Cylinder cover Gasket	20	AM-WP-80D-GE -E20	Carburetor Gasket
5	AM-WP-80D-GE -E05	Screw	21	AM-WP-80D-GE -E21	admitting pipe
6	AM-WP-80D-GE -E06	Intake Cover arm	22	AM-WP-80D-GE -E22	Carburetor
7	AM-WP-80D-GE -E07	Exhaust armer rock	23	AM-WP-80D-GE -E23	Choke lever Sleeve
8	AM-WP-80D-GE -E08	Valve locker	24	AM-WP-80D-GE -E24	Chike lever
9	AM-WP-80D-GE -E09	Valve spring seat	25	AM-WP-80D-GE -E25	Balancing Pressure pipe
10	AM-WP-80D-GE -E10	Valve spring	26	AM-WP-80D-GE -E26	Air Filter Gasket
11	AM-WP-80D-GE -E11	Valve oil seal	27	AM-WP-80D-GE -E27	Air Filter Seat
12	AM-WP-80D-GE -E12	Rocker Pin	28	AM-WP-80D-GE -E28	Screw
13	AM-WP-80D-GE -E13	Spark Plug	29	AM-WP-80D-GE -E29	Air Filter net gasket
14	AM-WP-80D-GE -E14	Cylinder	30	AM-WP-80D-GE -E30	Air Filter net
15	AM-WP-80D-GE -E15	Stud	31	AM-WP-80D-GE -E31	Buttrfly Nut
16	AM-WP-80D-GE -E16	Muffler Gasket	32	AM-WP-80D-GE -E32	Air Filter Cover

SL NO.	PART NO	DESCRIPTION	SL NO.	PART NO	DESCRIPTION
33	AM-WP-80D-GE -E33	Intake Valve	49	AM-WP-80D-GE -E49	Doctor Bar
34	AM-WP-80D-GE -E34	Exhaust Valve	50	AM-WP-80D-GE -E50	Backing Ring
35	AM-WP-80D-GE -E35	Cylinder Gasket	51	AM-WP-80D-GE -E51	Second Piston Ring
36	AM-WP-80D-GE -E36	Hollow Pin	52	AM-WP-80D-GE -E52	First Piston Ring
37	AM-WP-80D-GE -E37	Crankcase	53	AM-WP-80D-GE -E53	Top Sleeve
38	AM-WP-80D-GE -E38	Bearing	54	AM-WP-80D-GE -E54	Governor
39	AM-WP-80D-GE -E39	Cam Wheel	55	AM-WP-80D-GE -E55	Washer
40	AM-WP-80D-GE -E40	Valve Tappet	56	AM-WP-80D-GE -E56	Cylinder side cover Gasket
41	AM-WP-80D-GE -E41	Tappet	57	AM-WP-80D-GE -E57	Crankcase Side cover
42	AM-WP-80D-GE -E42	Screw	58	AM-WP-80D-GE -E58	Oil Seal
43	AM-WP-80D-GE -E43	Rod cap	59	AM-WP-80D-GE -E59	Screw
44	AM-WP-80D-GE -E44	Cranksahft Assy	60	AM-WP-80D-GE -E60	Oil Seal
45	AM-WP-80D-GE -E45	ConnectingRod Body	61	AM-WP-80D-GE -E61	O-Ring
46	AM-WP-80D-GE -E46	Piston Ring	62	AM-WP-80D-GE -E62	Screw
47	AM-WP-80D-GE -E47	Piston pin	63	AM-WP-80D-GE -E63	Floor
48	AM-WP-80D-GE -E48	Piston	64	AM-WP-80D-GE -E64	Screw

SL NO.	PART NO	DESCRIPTION	SL NO.	PART NO	DESCRIPTION
65	AM-WP-80D-GE -E65	Fuel Level Sensor	81	AM-WP-80D-GE -E81	Throttle Spring
66	AM-WP-80D-GE -E66	O-ring	82	AM-WP-80D-GE -E82	Throttle Lever Sleeve
67	AM-WP-80D-GE -E67	Washer	83	AM-WP-80D-GE -E83	Throttle lever
68	AM-WP-80D-GE -E68	Screw	84	AM-WP-80D-GE -E84	Winding Lever
69	AM-WP-80D-GE -E69	cable Clip	85	AM-WP-80D-GE -E85	Screw
70	AM-WP-80D-GE -E70	Key	86	AM-WP-80D-GE -E86	R Pin
71	AM-WP-80D-GE -E71	Fly Wheel	87	AM-WP-80D-GE -E87	Switch Lever
72	AM-WP-80D-GE -E72	Fan	88	AM-WP-80D-GE -E88	Governing Spring
73	AM-WP-80D-GE -E73	Starter Reel	89	AM-WP-80D-GE -E89	Switch
74	AM-WP-80D-GE -E74	Nut	90	AM-WP-80D-GE -E90	Screw
75	AM-WP-80D-GE -E75	Screw	91	AM-WP-80D-GE -E91	Amplifier
76	AM-WP-80D-GE -E76	Baffle	92	AM-WP-80D-GE -E92	Heatproof lagging
77	AM-WP-80D-GE -E77	Ignition Coil	93	AM-WP-80D-GE -E93	On/Off Switch
78	AM-WP-80D-GE -E78	Screw	94	AM-WP-80D-GE -E94	Rear Bracket
79	AM-WP-80D-GE -E79	Flywheel Cover	95	AM-WP-80D-GE -E95	Front Bracket
80	AM-WP-80D-GE -E80	Recoil Starter	96	AM-WP-80D-GE -E96	Left Bracket

SL NO.	PART NO	DESCRIPTION	SL NO.	PART NO	DESCRIPTION
97	AM-WP-80D-GE -E97	Right Bracket			
98	AM-WP-80D-GE -E98	Fuel Tank filter element			
99	AM-WP-80D-GE -E99	Locking clip			
100	AM-WP-80D-GE -E100	Oil Pipe			
101	AM-WP-80D-GE -E101	Locking clip			
102	AM-WP-80D-GE -E102	Gasoline valve switch			
103	AM-WP-80D-GE -E103	Screw			
104	AM-WP-80D-GE -E104	L Oil Pipe			
105	AM-WP-80D-GE -E105	Locking clip			
106	AM-WP-80D-GE -E106	Fuel Tank			
107	AM-WP-80D-GE -E107	Fuel Tank Strainer			
108	AM-WP-80D-GE -E108	Fuel Tank Lid			

PUMP DIAGRAM & SPARE PART LIST OF WATER PUMP - GASOLINE



SL NO.	PART NO	DESCRIPTION	SL NO.	PART NO	DESCRIPTION
1	AM-WP-80D-GE -P01	Connecting Frame	17	AM-WP-80D-GE -P17	Check Valve
2	AM-WP-80D-GE -P02	Water pump cover	18	AM-WP-80D-GE -P18	Inlet Flange
3	AM-WP-80D-GE -P03	Handle	19	AM-WP-80D-GE -P19	Bolt
4	AM-WP-80D-GE -P04	Nut	20	AM-WP-80D-GE -P20	Sealing Washer
5	AM-WP-80D-GE -P05	Plain Washer	21	AM-WP-80D-GE -P21	Pipe
6	AM-WP-80D-GE -P06	Bolt	22	AM-WP-80D-GE -P22	Spanner
7	AM-WP-80D-GE -P07	Mechanical Seal	23	AM-WP-80D-GE -P23	Clamp
8	AM-WP-80D-GE -P08	Pump Sealing ring	24	AM-WP-80D-GE -P24	Bolt
9	AM-WP-80D-GE -P09	Impeller	25	AM-WP-80D-GE -P25	Bolt
10	AM-WP-80D-GE -P10	Diffuser	26	AM-WP-80D-GE -P26	Filter Cover
11	AM-WP-80D-GE -P11	O-Ring	27	AM-WP-80D-GE -P27	Bolt
12	AM-WP-80D-GE -P12	Pump Body	28	AM-WP-80D-GE -P28	Engine
13	AM-WP-80D-GE -P13	O-Ring	29	AM-WP-80D-GE -P29	Floor
14	AM-WP-80D-GE -P14	Outlet Flange	30	AM-WP-80D-GE -P30	Bolt
15	AM-WP-80D-GE -P15	O-ring			
16	AM-WP-80D-GE -P16	Whorl Plug			

INSPECTION & MAINTAINANCE

For safety use, make sure the machine is cleaned every three months. Before working, make sure to inspect the filter and the nozzle and ensure there is no impurity. After working, make sure there is no water in the pump and the hose.

If the machine needs to be repaired in the guarantee period, please return the machine to the shop. You need to provide the certificate of purchase on order to repair or get the substitute.

Before packing, the machine should be cleaned, then use closed packaging, packaging should be firm. Store the machine in dry place.

For transportation safety. The machine should comply with ISTA.

Do not dispose of electrical machines as unsorted municipal waste, use separate collection facilities.

If electrical machines are disposed of in landfills or dumps, hazardous substances can leak into the ground water and get into the food chain, damaging your health and well being.

When replacing old machines with new ones, the retailer is legally obligated to take back your old machine for disposals at least free of charge.

WARRANTY CARD

CUSTOMER COPY

DATE _____	DATE OF DELIVERY _____	DEALERS OFFICIAL SEAL	DEALERS SIGN _____
PURCHASERS NAME & ADDRESS _____ _____ _____	<div>CUSTOMER SIGN</div>	<div></div>	
PRODUCT NAME	PRODUCT SERIAL NO.	INVOICE/DN NO.	
<div></div>	<div></div>	<div></div>	
I/Will accept the terms and conditions of warranty as in the warranty card			

DEALERS COPY

DATE _____	DATE OF DELIVERY _____	DEALERS OFFICIAL SEAL	DEALERS SIGN _____
PURCHASERS NAME & ADDRESS _____ _____ _____	<div>CUSTOMER SIGN</div>	<div></div>	
PRODUCT NAME	PRODUCT SERIAL NO.	INVOICE/DN NO.	
<div></div>	<div></div>	<div></div>	
I/Will accept the terms and conditions of warranty as in the warranty card			

COMPANY COPY

DATE _____	DATE OF DELIVERY _____	DEALERS OFFICIAL SEAL	DEALERS SIGN _____
PURCHASERS NAME & ADDRESS _____ _____ _____	<div>CUSTOMER SIGN</div>	<div></div>	
PRODUCT NAME	PRODUCT SERIAL NO.	INVOICE/DN NO.	
<div></div>	<div></div>	<div></div>	
I/Will accept the terms and conditions of warranty as in the warranty card			

1. LIMITED WARRANTY PERIOD : For a period of six months from the date of Sale / delivery of the product which ever is earlier. 2. LIMITED WARRANTY OBLIGATION : Replacement of defective part(s) by authorized dealer are free of charges. If found defective by reasons of defective material / poor workmanship, parts will be replaced and there will be no value re-imbursement. 3. TERMS & CONDITIONS : a. Claims under warranty will be accepted on submission of Warranty Card duly filled and stamped by authorized dealer together with the original purchase document. : b. Shipping / transportation / Incidental charges incurred in replacing defective parts under warranty shall be borne by the purchaser

WARRANTY null & void if
(i) Lack of maintenance, (ii) Incorrect use of the machine or tampering, (iii) Use of non-genuine spare parts, (iv) Usage of acids, solvents, or any flammable materials, (v) Non-usage of filter water / clear water / soft water & using water above 40°C temperature, (vi) While using the pressure washers to draw water which is contaminated with dust & solvents (eg. paint thinners, gasoline, oil, etc.), (vii) Repair done by unauthorized service people, (viii) Those parts subject to wear & tear due to normal operations and plastic parts, rubber items etc, (ix) Loose connections, faulty electrical fixtures & fluctuations in power supply.
4. Should any failure occur during or after the warranty period, customer does not have the right to interrupt payment / price discount.
5. Incidental or consequential damages like inconvenience commercial loss, loss of tie, mental agony etc.
6. Loss of any nature due to operation or non-operation is not covered under warranty.
7. All free service are at Dealer's service point only.
8. Warranty ceases if service is not done periodically.
9. The attached card should be completed and returned to Ratnagiri Impex Pvt. Ltd. for registration immediately after sale / delivery.
10. The warranty is void unless you register the warranty card with Ratnagiri Impex Pvt. Ltd.
11. The decision of Ratnagiri Impex Pvt. Ltd., in settling the warranty is final in all respects.
12. All disputes are subject to Bangalore Courts Jurisdiction

1. LIMITED WARRANTY PERIOD : For a period of six months from the date of Sale / delivery of the product which ever is earlier. 2. LIMITED WARRANTY OBLIGATION : Replacement of defective part(s) by authorized dealer are free of charges. If found defective by reasons of defective material / poor workmanship, parts will be replaced and there will be no value re-imbursement. 3. TERMS & CONDITIONS : a. Claims under warranty will be accepted on submission of Warranty Card duly filled and stamped by authorized dealer together with the original purchase document. : b. Shipping / transportation / Incidental charges incurred in replacing defective parts under warranty shall be borne by the purchaser.
WARRANTY null & void if
(i) Lack of maintenance, (ii) Incorrect use of the machine or tampering, (iii) Use of non-genuine spare parts, (iv) Usage of acids, solvents, or any flammable materials, (v) Non-usage of filter water / clear water / soft water & using water above 40°C temperature, (vi) While using the pressure washers to draw water which is contaminated with dust & solvents (eg. paint thinners, gasoline, oil, etc.), (vii) Repair done by unauthorized service people, (viii) Those parts subject to wear & tear due to normal operations and plastic parts, rubber items etc, (ix) Loose connections, faulty electrical fixtures & fluctuations in power supply.
4. Should any failure occur during or after the warranty period, customer does not have the right to interrupt payment / price discount.
5. Incidental or consequential damages like inconvenience commercial loss, loss of tie, mental agony etc.
6. Loss of any nature due to operation or non-operation is not covered under warranty.
7. All free service are at Dealer's service point only.
8. Warranty ceases if service is not done periodically.
9. The attached card should be completed and returned to Ratnagiri Impex Pvt. Ltd. for registration immediately after sale / delivery.
10. The warranty is void unless you register the warranty card with Ratnagiri Impex Pvt. Ltd.
11. The decision of Ratnagiri Impex Pvt. Ltd., in settling the warranty is final in all respects.
12. All disputes are subject to Bangalore Courts Jurisdiction

1. LIMITED WARRANTY PERIOD : For a period of six months from the date of Sale / delivery of the product which ever is earlier. 2. LIMITED WARRANTY OBLIGATION : Replacement of defective part(s) by authorized dealer are free of charges. If found defective by reasons of defective material / poor workmanship, parts will be replaced and there will be no value re-imbursement. 3. TERMS & CONDITIONS : a. Claims under warranty will be accepted on submission of Warranty Card duly filled and stamped by authorized dealer together with the original purchase document. : b. Shipping / transportation / Incidental charges incurred in replacing defective parts under warranty shall be borne by the purchaser.
WARRANTY null & void if
(i) Lack of maintenance, (ii) Incorrect use of the machine or tampering, (iii) Use of non-genuine spare parts, (iv) Usage of acids, solvents, or any flammable materials, (v) Non-usage of filter water / clear water / soft water & using water above 40°C temperature, (vi) While using the pressure washers to draw water which is contaminated with dust & solvents (eg. paint thinners, gasoline, oil, etc.), (vii) Repair done by unauthorized service people, (viii) Those parts subject to wear & tear due to normal operations and plastic parts, rubber items etc, (ix) Loose connections, faulty electrical fixtures & fluctuations in power supply.
4. Should any failure occur during or after the warranty period, customer does not have the right to interrupt payment / price discount.
5. Incidental or consequential damages like inconvenience commercial loss, loss of tie, mental agony etc.
6. Loss of any nature due to operation or non-operation is not covered under warranty.
7. All free service are at Dealer's service point only.
8. Warranty ceases if service is not done periodically.
9. The attached card should be completed and returned to Ratnagiri Impex Pvt. Ltd. for registration immediately after sale / delivery.
10. The warranty is void unless you register the warranty card with Ratnagiri Impex Pvt. Ltd.
11. The decision of Ratnagiri Impex Pvt. Ltd., in settling the warranty is final in all respects.
12. All disputes are subject to Bangalore Courts Jurisdiction

FREE SERVICE COUPON (30DAYS/30HRS. WHICHEVER IS EARLIER)

MODEL		SERIAL NUMBER	
PDI DATE	SERVICE NO.	PURCHASE BILL NO.	DATE
DEALERS OFFICE SEAL	OPERATIONS		
	<div> 1. Check and test the fuel mixture 3. Check , clean and adjust the spark plug 5. Check and sparken the cutting tools 7. Start and check the noise, vibration, loosen etc.. </div> <div> 2. check and clean the air filter 4. Check and adjust the carburetor tuning 6. Product familiarisation on usage 8. Routine maintenance and shortage. </div>		

FREE SERVICE COUPON (30DAYS/30HRS. WHICHEVER IS EARLIER)

MODEL		SERIAL NUMBER	
PDI DATE	SERVICE NO.	PURCHASE BILL NO.	DATE
DEALERS OFFICE SEAL	OPERATIONS		
	<div> 1. Check and test the fuel mixture 3. Check , clean and adjust the spark plug 5. Check and sparken the cutting tools 7. Start and check the noise, vibration, loosen etc.. </div> <div> 2. check and clean the air filter 4. Check and adjust the carburetor tuning 6. Product familiarisation on usage 8. Routine maintenance and shortage. </div>		

FREE SERVICE COUPON (30DAYS/30HRS. WHICHEVER IS EARLIER)

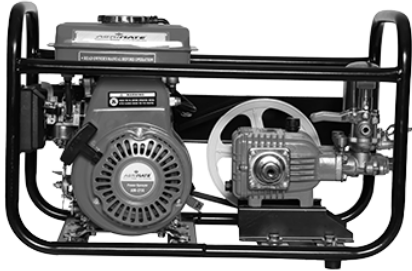
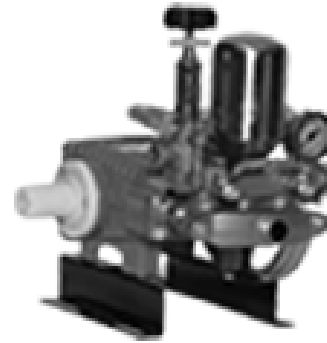
MODEL		SERIAL NUMBER	
PDI DATE	SERVICE NO.	PURCHASE BILL NO.	DATE
DEALERS OFFICE SEAL	OPERATIONS		
	<div> 1. Check and test the fuel mixture 3. Check , clean and adjust the spark plug 5. Check and sparken the cutting tools 7. Start and check the noise, vibration, loosen etc.. </div> <div> 2. check and clean the air filter 4. Check and adjust the carburetor tuning 6. Product familiarisation on usage 8. Routine maintenance and shortage. </div>		

DOS & DONTs

1. Always read the instruction manual supplied along with the equipments and understand the correct installation and operating procedures before attempting to use the equipments.
2. It is important to use the personal protection equipments such as head helmet with visor, ear defenders, goggles, safety gloves, cut resistant shoes, trousers and jackets while operating potentially dangerous machines
3. Avoid untrained persons using the equipments. Children must not be allowed to handle these equipments
4. Always use genuine spares and accessories in repairs and usage to derive maximum life of the equipments.
5. Always keep the equipments in good working condition to minimize loss of output as well as to reduce the pollution and save the environment
6. Do not use the machine within range of persons unless they wear protective clothing
7. Do not operate the machine when fatigued or under the influence of alcohol or drugs
8. When the machine is running, please maintain a constant water supply. Without water circulation will damage the sealing rings of the machine.
9. For more query kindly contact for our Service Center/Dealer/ franchise

Agrimate Army For Pest Control

ANY WHERE - ANY TIME - ANY CROP



Marketed by:
**ratnagiri
impex**
BRINGING YOU THE FUTURE... NOW

IMPORTED & MARKETING BY,
RATNAGIRI IMPEX PVT., LTD.,

Annapurna House, #1 / 1G, 7th Cross, New
Guddadahalli Mysore Road, Bangalore - 560 026

Missed Call : 7393 938 938 Email: ask@agrimart.in