

AM-K425HC-4S

KNAPSACK POWER SPRAYER



DISCLAIMER: DUE TO CONSTANT UPGRADATION, FEATURES AND SPECIFICATIONS ARE SUBJECT TO CHANGE WITHOUT NOTICE



BEFORE OPERATING THIS MACHINE,
PLEASE READ THESE INSTRUCTIONS CAREFULLY



Good Products – Great Values

Dear Sir/Madam,

Thank you for choosing Agrimate product. You are the proud owner of high technology and durable machine. Trust that our franchisee/dealer installed the product and explained you about the usage and service instructions. Please visit our authorised dealer for your future requirement of our other equipments, genuine spares, accessories and service. Service coupons are attached with this manual and you can avail free service to keep your machine fit always to use on demand.

About Ratnagiri

We import and market of high quality of agriculture wide range of equipment's Which we are selling through our authorized franchisee or dealer network. We are in this field from past 20 years serving the former community. For further details, you may please visit our website www.agrimart.in, Tool Free No: 1800-425-3036.

Range of Brands



Our Retail Formats



Agriculture | Horticulture | Sericulture | Plantations | Forestry | Garden | Health care

TECHNICAL PARAMETERS

Model	AM-K425HC-4S
Name	Knapsack Power Sprayer
Engine type	4Stroke Petrol
Power	0.7KW/7000rpm
Displacement	37.7cc
Working pressure	2.5mpa
Flow	7.4L/min

TROUBLE ANALYSIS

Trouble	Cause	Solution
Can't supply water Unstable pressure	Strainer Assy blocked	Clean Strainer Assy
	Suction Hose leaked	Lock tightly Wing Net or replace Packing
	Redundant air inside pump	Exhaust redundant air inside pump
	Valve damaged or blocked	Eliminate impurities or replace Valve Seal
Cylinder leaked	Grand too loose	Lock tightly Grand (After machine stopped)
	V-packing damaged	Replace V-packing
Pressure shortage	Improper pressure adjustment	Adjust adjusting screw to proper pressure
	Belt too loose	Adjust belt to moderate tension
	High pressure pipe leaked	Check, repair, or replace high pressure pipe
	Valve or valve seat damaged	Replace valve or valve seat
Leaked oil	Oil seal damaged, unlocked tightly	Lock tightly or replace relevant oil seal
Temperature too high	No lubricating oil or too dirty	Add grease on time, replace clean lubricating oil
	Pressure or velocity too high	Adjust to proper pressure or velocity

We reserve the right for revision without further notice !

TROUBLE SHOOTING

1. Fail to start

- Oil switch is not turned on
- Gasoline is mixed with water, replace it
- The ignition plug has accumulated carbon or has been broken
- Poor contact of the high voltage wire with the spark plug

2. The engine can start, but can't run fast

- The choke is either open or closed fully
- The ratio of engine oil and the gasoline is normal or not
- Maybe there is water in gasoline

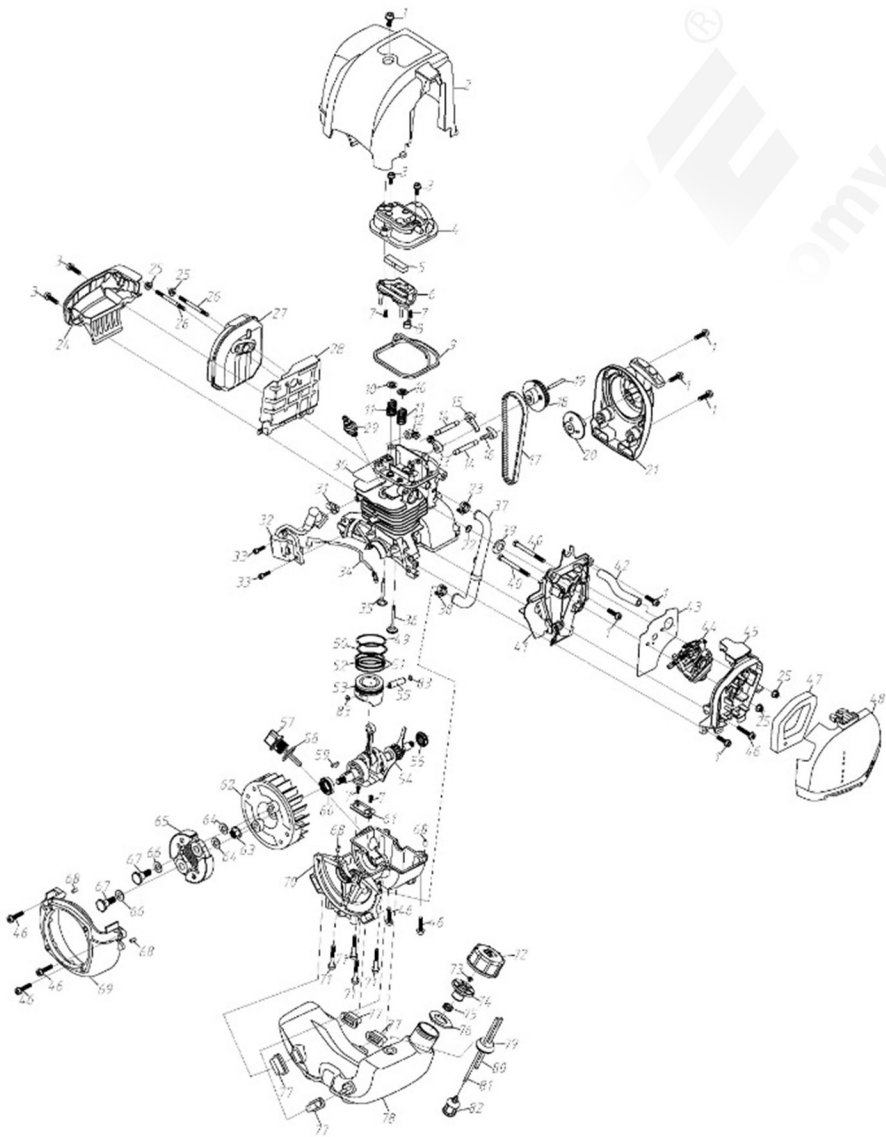
3. The gasoline engine can run, but has not enough power

- Maybe the core of the air filter is blocked by dust
- Maybe the cylinder exhaust and the muffler are blocked by accumulated carbon
- The piston, the piston rings and cylinder have been badly worn out
- Maybe the gasoline filter is blocked by dust
- The body or the top of the shaft has oil leakage and air leakage

4. The gasoline engine stops suddenly when running

- Run out of the gasoline
- The high voltage wire drops
- The ignition plug has accumulated carbon or has been broken
- The gasoline filter is blocked by dust
- Maybe there is water in the gasoline
- The air hole of the tank lid is blocked by dust

ENGINE PART DIAGRAM OF AM-K425HC-4S KNAPSACK POWER SPRAYER



**ENGINE PART PART LIST OF
AM-K425HC-4S KNAPSACK POWER SPRAYER**

Sl. No.	Part No.	Description
1	AM-425-E01	Screw
2	AM-425-E02	Cylinder Cover
3	AM-425-E03	Screw
4	AM-425-E04	Cylinder valve cover
5	AM-425-E05	Oil gas seperator
6	AM-425-E06	Inside cover
7	AM-425-E07	Screw
8	AM-425-E08	Rubber Cushion
9	AM-425-E09	Rubber Cushion
10	AM-425-E10	Vale spring seat
11	AM-425-E11	Valve spring
12	AM-425-E12	Exhuast Valve rocker
13	AM-425-E13	Inlet valve rocker
14	AM-425-E14	Rocker pin
15	AM-425-E15	Exhaust rocker
16	AM-425-E16	Inlet rocker
17	AM-425-E17	synchronous Belt
18	AM-425-E18	cam wheel
19	AM-425-E19	camshaft
20	AM-425-E20	start reel
21	AM-425-E21	Starter
22	AM-425-E22	admitting gasket
23	AM-425-E23	Holding-down clip
24	AM-425-E24	Muffler baffle-II
25	AM-425-E25	Nut
26	AM-425-E26	Double -edged bolt
27	AM-425-E27	Muffle
28	AM-425-E28	Muffler baffle

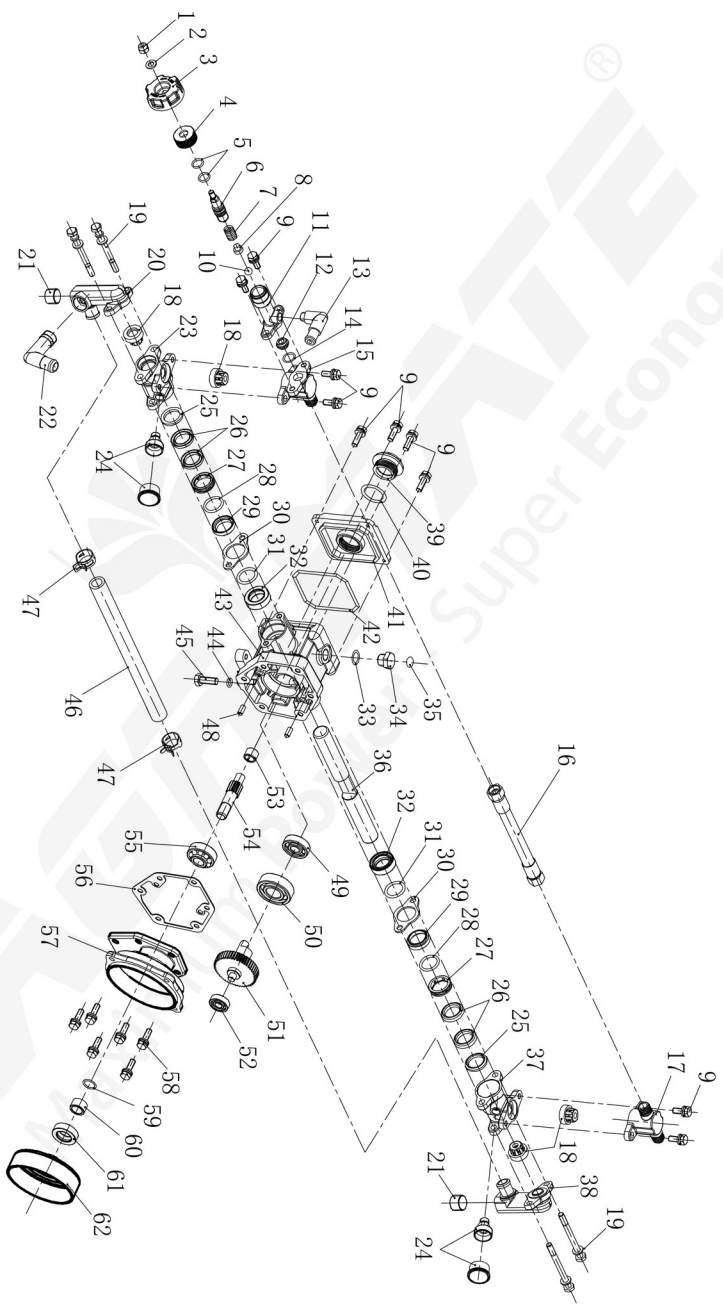
**ENGINE PART PART LIST OF
AM-K425HC-4S KNAPSACK POWER SPRAYER**

Sl. No.	Part No.	Description
29	AM-425-E29	Spark plug
30	AM-425-E30	cylinder
31	AM-425-E31	Fastner
32	AM-425-E32	Ignition starter
33	AM-425-E33	Screw
34	AM-425-E34	Stopping wire
35	AM-425-E35	Exhaust valve
36	AM-425-E36	Inlet valve
37	AM-425-E37	Balancing pressure pipe
38	AM-425-E38	Holding -down clip
39	AM-425-E39	O-seal ring
40	AM-425-E40	Screw
41	AM-425-E41	Admitting pipe
42	AM-425-E42	Blast pipe
43	AM-425-E43	Gasket
44	AM-425-E44	Carburator
45	AM-425-E45	Cleaner inside cover
46	AM-425-E46	Screw
47	AM-425-E47	Filter net
48	AM-425-E48	Air filter cover
49	AM-425-E49	No. 1 Piston ring
50	AM-425-E50	No.2 piston ring
51	AM-425-E51	Oil scrapper ring
52	AM-425-E52	Liner ring
53	AM-425-E53	Piston
54	AM-425-E54	Crank shaft
55	AM-425-E55	Piston pin
56	AM-425-E56	Oil seal

**ENGINE PART PART LIST OF
AM-K425HC-4S KNAPSACK POWER SPRAYER**

Sl. No.	Part No.	Description
57	AM-425-E57	Oil scale
58	AM-425-E58	O-seal ring
59	AM-425-E59	Key
60	AM-425-E60	Oil seal
61	AM-425-E61	Reed Valve
62	AM-425-E62	Magneto rotor comp.
63	AM-425-E63	Nut
64	AM-425-E64	Washer
65	AM-425-E65	Clutch
66	AM-425-E66	Washer
67	AM-425-E67	Screw pin
68	AM-425-E68	Pin
69	AM-425-E69	Magneto cover
70	AM-425-E70	Cramnk case
71	AM-425-E71	Screw
72	AM-425-E72	Fuel tank lid
73	AM-425-E73	Air admission valve
74	AM-425-E74	Inside cover
75	AM-425-E75	Shell cover
76	AM-425-E76	Airproof gasket
77	AM-425-E77	Rubber Cushion
78	AM-425-E78	Fuel tank
79	AM-425-E79	Plug
80	AM-425-E80	Fuel return pipe
81	AM-425-E81	Fuel suction pipe
82	AM-425-E82	Filter
83	AM-425-E83	Ring

PUMP PART DIAGRAM OF AM-K425HC-4S KNAPSACK POWER SPRAYER



PUMP PART PART LIST OF AM-K425HC-4S KNAPSACK POWER SPRAYER

Sl. No.	Part No.	Description
1	AM-K425HC-P01	Nut
2	AM-K425HC-P02	Washer
3	AM-K425HC-P03	Pressure Adjusting
4	AM-K425HC-P04	Nut
5	AM-K425HC-P05	O-ring
6	AM-K425HC-P06	Pressure value Screw
7	AM-K425HC-P07	Spring
8	AM-K425HC-P08	Valve Rod
9	AM-K425HC-P09	Bolt
10	AM-K425HC-P10	Valve Ball
11	AM-K425HC-P11	Pressure valve case
12	AM-K425HC-P12	Valve seat
13	AM-K425HC-P13	Pipe
14	AM-K425HC-P14	O-ring
15	AM-K425HC-P15	Outlet chamber
16	AM-K425HC-P16	Outlet pressure hose
17	AM-K425HC-P17	Outlet chamber double hole
18	AM-K425HC-P18	Valve assy
19	AM-K425HC-P19	Bolt
20	AM-K425HC-P20	Suction pipe Double
21	AM-K425HC-P21	Nut
22	AM-K425HC-P22	Suction pipe
23	AM-K425HC-P23	Cylinder Double
24	AM-K425HC-P24	Grease cup
25	AM-K425HC-P25	Parking seat
26	AM-K425HC-P26	V- parking

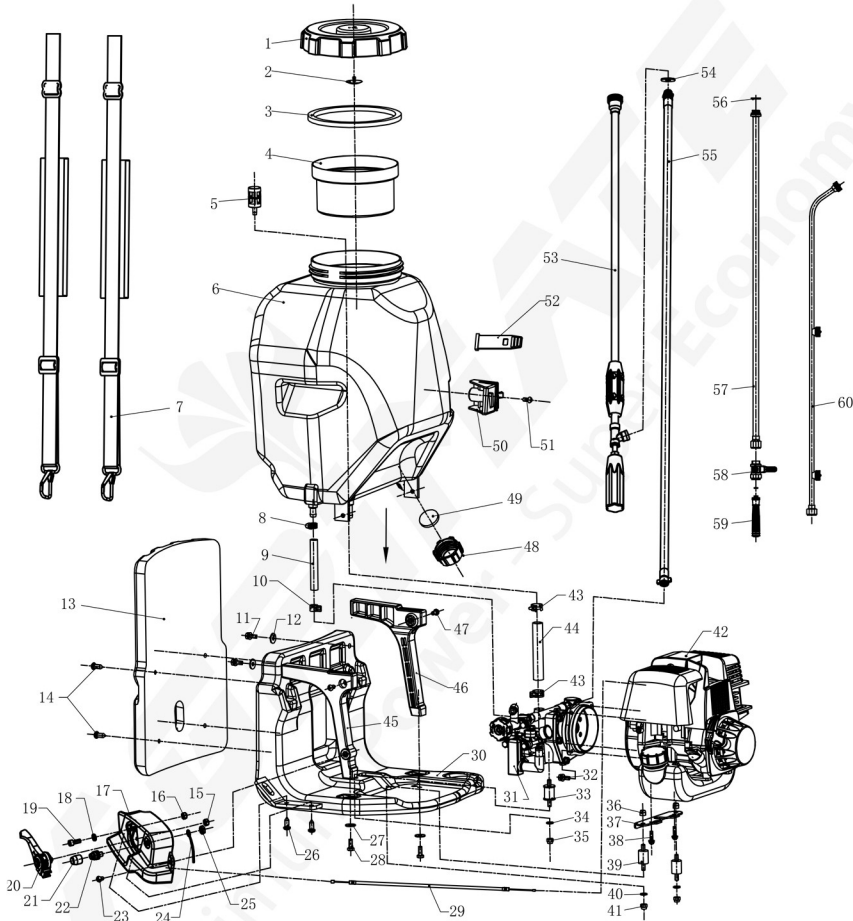
PUMP PART PART LIST OF AM-K425HC-4S KNAPSACK POWER SPRAYER

Sl. No.	Part No.	Description
27	AM-K425HC-P27	Grease ring
28	AM-K425HC-P28	Adjusting ring
29	AM-K425HC-P29	Grand
30	AM-K425HC-P30	Fixed seat
31	AM-K425HC-P31	O-ring
32	AM-K425HC-P32	Oil seal
33	AM-K425HC-P33	O-ring
34	AM-K425HC-P34	Bolt
35	AM-K425HC-P35	Paster
36	AM-K425HC-P36	Plunger
37	AM-K425HC-P37	Cylinder single
38	AM-K425HC-P38	Suction single
39	AM-K425HC-P39	Oil glass
40	AM-K425HC-P40	O-Ring
41	AM-K425HC-P41	Cover of crank case
42	AM-K425HC-P42	O ring
43	AM-K425HC-P43	Crank case
44	AM-K425HC-P44	O-Ring
45	AM-K425HC-P45	Bolt
46	AM-K425HC-P46	Hose
47	AM-K425HC-P47	Clip
48	AM-K425HC-P48	Cylindrical pin
49	AM-K425HC-P49	Bearing
50	AM-K425HC-P50	Bearing
51	AM-K425HC-P51	Gear
52	AM-K425HC-P52	Bearing

**PUMP PART PART LIST OF
AM-K425HC-4S KNAPSACK POWER SPRAYER**

Sl. No.	Part No.	Description
53	AM-K425HC-P53	Bearing
54	AM-K425HC-P54	Gear Shaft
55	AM-K425HC-P55	Bearing
56	AM-K425HC-P56	Gasket
57	AM-K425HC-P57	Drum case
58	AM-K425HC-P58	Bolt
59	AM-K425HC-P59	O-ring
60	AM-K425HC-P60	Pipe
61	AM-K425HC-P61	Oil seal
62	AM-K425HC-P62	Clutch assy

TANK DIAGRAM OF AM-K425HC-4S KNAPSACK POWER SPRAYER



TANK PART LIST OF AM-K425HC-4S KNAPSACK POWER SPRAYER

Sl.No.	Part No.	Description
1	AM-K425HC-T01	Container cover
2	AM-K425HC-T02	Inlet valve
3	AM-K425HC-T03	Gasket
4	AM-K425HC-T04	Filter
5	AM-K425HC-T05	Outlet filter
6	AM-K425HC-T06	Tank
7	AM-K425HC-T07	Strap
8	AM-K425HC-T08	Clip
9	AM-K425HC-T09	Overflow Pipe
10	AM-K425HC-T10	Clip
11	AM-K425HC-T11	Screw
12	AM-K425HC-T12	Washer
13	AM-K425HC-T13	Pad
14	AM-K425HC-T14	Bolt
15	AM-K425HC-T15	Nut
16	AM-K425HC-T16	Nut
17	AM-K425HC-T17	Switch Box
18	AM-K425HC-T18	Washer
19	AM-K425HC-T19	Bolt
20	AM-K425HC-T20	Flex Accelerator
21	AM-K425HC-T21	Stop Switch cap
22	AM-K425HC-T22	Switch
23	AM-K425HC-T23	Bolt
24	AM-K425HC-T24	Bolt
25	AM-K425HC-T25	Line
26	AM-K425HC-T26	Nut
27	AM-K425HC-T27	Washer
28	AM-K425HC-T28	Bolt
29	AM-K425HC-T29	Cable comp
30	AM-K425HC-T30	Frame
31	AM-K425HC-T31	Pump

Sl.No.	Part No.	Description
32	AM-K425HC-T32	Screw
33	AM-K425HC-T33	Joint
34	AM-K425HC-T34	Washer
35	AM-K425HC-T35	Nut
36	AM-K425HC-T36	Nut
37	AM-K425HC-T37	Engine Chair
38	AM-K425HC-T38	Screw
39	AM-K425HC-T39	Joint
40	AM-K425HC-T40	Washer
41	AM-K425HC-T41	Nut
42	AM-K425HC-T42	Engine
43	AM-K425HC-T43	Clip
44	AM-K425HC-T44	Suction pipe
45	AM-K425HC-T45	Stander-L
46	AM-K425HC-T46	Stander-R
47	AM-K425HC-T47	Bolt
48	AM-K425HC-T48	Drain cap
49	AM-K425HC-T49	Gasket
50	AM-K425HC-T50	Gun holder
51	AM-K425HC-T51	Bolt
52	AM-K425HC-T52	Bandage
53	AM-K425HC-T53	3ft Spraying Gun
54	AM-K425HC-T54	Washer
55	AM-K425HC-T55	Spraying hose
56	AM-K425HC-T56	Washer
57	AM-K425HC-T57	Spraying Rod
58	AM-K425HC-T58	Ball cock
59	AM-K425HC-T59	Handle
60	AM-K425HC-T60	3Nozzel lance

Warranty Card

CUSTOMER COPY



Purchaser's Name & Address

Product Name

AM-K425HC-4S KNAPSACK POWER SPRAYER

Product Serial No.

Invoice / DN No.

Date of Delivery

Dealer's Office Seal

Dealer Sign _____

Customer Sign. _____

I/We accept the terms and conditions of Warranty as in the Warranty Card.

Warranty Card

DEALER'S COPY



Purchaser's Name & Address

Product Name

AM-K425HC-4S KNAPSACK POWER SPRAYER

Product Serial No.

Invoice / DN No.

Date of Delivery

Dealer's Office Seal

Dealer Sign _____

Customer Sign. _____

I/We accept the terms and conditions of Warranty as in the Warranty Card.

Warranty Card

COMPANY COPY



Purchaser's Name & Address

Product Name

AM-K425HC-4S KNAPSACK POWER SPRAYER

Product Serial No.

Invoice / DN No.

Date of Delivery

Dealer's Office Seal

Dealer Sign _____

Customer Sign. _____

I/We accept the terms and conditions of Warranty as in the Warranty Card.

1. **LIMITED WARRANTY PERIOD** : For a period of six months from the date of Sale / delivery of the product which ever is earlier. 2. **LIMITED WARRANTY OBLIGATION** : Replacement of defective part(s) by authorized dealer are free of charges. If found defective by reasons of defective material / poor workmanship, parts will be replaced and there will be no value re-imburement. 3. **TERMS & CONDITIONS** : a. Claims under warranty will be accepted on submission of Warranty Card duly filled and stamped by authorized dealer together with the original purchase document. : b. Shipping / transportation / Incidental charges incurred in replacing defective parts under warranty shall be borne by the purchaser.

WARRANTY null & void if

- (i) Lack of maintenance, (ii) Incorrect use of the machine or tampering, (iii) Use of non-genuine spare parts, (iv) Usage of acids, solvents, or any flammable materials, (v) Non-usage of filter water / clear water / soft water & using water above 40°C temperature, (vi) While using the pressure washers to draw water which is contaminated with dust & solvents (eg. paint thinners, gasoline, oil, etc.), (vii) Repair done by unauthorized service people, (viii) Those parts subject to wear & tear due to normal operations and plastic parts, rubber items etc, (ix) Loose connections, faulty electrical fixtures & fluctuations in power supply.
4. Should any failure occur during or after the warranty period, customer does not have the right to interrupt payment / price discount.
 5. Incidental or consequential damages like inconvenience commercial loss, loss of tie, mental agony etc.
 6. Loss of any nature due to operation or non-operation is not covered under warranty.
 7. All free service are at Dealer's service point only.
 8. Warranty ceases if service is not done periodically.
 9. The attached card should be completed and returned to Ratnagiri Impex Pvt. Ltd. for registration immediately after sale / delivery.
 10. The warranty is void unless you register the warranty card with Ratnagiri Impex Pvt. Ltd.
 11. The decision of Ratnagiri Impex Pvt. Ltd., in settling the warranty is final in all respects.
 12. All disputes are subject to Bangalore Courts Jurisdiction

1. **LIMITED WARRANTY PERIOD** : For a period of six months from the date of Sale / delivery of the product which ever is earlier. 2. **LIMITED WARRANTY OBLIGATION** : Replacement of defective part(s) by authorized dealer are free of charges. If found defective by reasons of defective material / poor workmanship, parts will be replaced and there will be no value re-imburement. 3. **TERMS & CONDITIONS** : a. Claims under warranty will be accepted on submission of Warranty Card duly filled and stamped by authorized dealer together with the original purchase document. : b. Shipping / transportation / Incidental charges incurred in replacing defective parts under warranty shall be borne by the purchaser.

WARRANTY null & void if

- (i) Lack of maintenance, (ii) Incorrect use of the machine or tampering, (iii) Use of non-genuine spare parts, (iv) Usage of acids, solvents, or any flammable materials, (v) Non-usage of filter water / clear water / soft water & using water above 40°C temperature, (vi) While using the pressure washers to draw water which is contaminated with dust & solvents (eg. paint thinners, gasoline, oil, etc.), (vii) Repair done by unauthorized service people, (viii) Those parts subject to wear & tear due to normal operations and plastic parts, rubber items etc, (ix) Loose connections, faulty electrical fixtures & fluctuations in power supply.
4. Should any failure occur during or after the warranty period, customer does not have the right to interrupt payment / price discount.
 5. Incidental or consequential damages like inconvenience commercial loss, loss of tie, mental agony etc.
 6. Loss of any nature due to operation or non-operation is not covered under warranty.
 7. All free service are at Dealer's service point only.
 8. Warranty ceases if service is not done periodically.
 9. The attached card should be completed and returned to Ratnagiri Impex Pvt. Ltd. for registration immediately after sale / delivery.
 10. The warranty is void unless you register the warranty card with Ratnagiri Impex Pvt. Ltd.
 11. The decision of Ratnagiri Impex Pvt. Ltd., in settling the warranty is final in all respects.
 12. All disputes are subject to Bangalore Courts Jurisdiction

1. **LIMITED WARRANTY PERIOD** : For a period of six months from the date of Sale / delivery of the product which ever is earlier. 2. **LIMITED WARRANTY OBLIGATION** : Replacement of defective part(s) by authorized dealer are free of charges. If found defective by reasons of defective material / poor workmanship, parts will be replaced and there will be no value re-imburement. 3. **TERMS & CONDITIONS** : a. Claims under warranty will be accepted on submission of Warranty Card duly filled and stamped by authorized dealer together with the original purchase document. : b. Shipping / transportation / Incidental charges incurred in replacing defective parts under warranty shall be borne by the purchaser.

WARRANTY null & void if

- (i) Lack of maintenance, (ii) Incorrect use of the machine or tampering, (iii) Use of non-genuine spare parts, (iv) Usage of acids, solvents, or any flammable materials, (v) Non-usage of filter water / clear water / soft water & using water above 40°C temperature, (vi) While using the pressure washers to draw water which is contaminated with dust & solvents (eg. paint thinners, gasoline, oil, etc.), (vii) Repair done by unauthorized service people, (viii) Those parts subject to wear & tear due to normal operations and plastic parts, rubber items etc, (ix) Loose connections, faulty electrical fixtures & fluctuations in power supply.
4. Should any failure occur during or after the warranty period, customer does not have the right to interrupt payment / price discount.
 5. Incidental or consequential damages like inconvenience commercial loss, loss of tie, mental agony etc.
 6. Loss of any nature due to operation or non-operation is not covered under warranty.
 7. All free service are at Dealer's service point only.
 8. Warranty ceases if service is not done periodically.
 9. The attached card should be completed and returned to Ratnagiri Impex Pvt. Ltd. for registration immediately after sale / delivery.
 10. The warranty is void unless you register the warranty card with Ratnagiri Impex Pvt. Ltd.
 11. The decision of Ratnagiri Impex Pvt. Ltd., in settling the warranty is final in all respects.
 12. All disputes are subject to Bangalore Courts Jurisdiction



ratnagiri impex
MAXIMUM POWER - SUPER ECONOMY

1st Free Service Coupon

ISO 9001-2015
CERTIFIED COMPANY

FREE SERVICE COUPON (30 Days / 30 hrs (Which ever is earlier))

Model
AM-K425HC-4S KNAPSACK POWER SPRAYER

Serial Number

PDI Date

Purchase bill no.

Date

Service No.

- Operations:
- Check and Test the Fuel Mixture.
 - Check and Clean the Air Filter
 - Check, Clean and Adjust the Spark plug
 - Check and Adjust the Carburetor Tuning
 - Check and Sharpen the cutting Tools
 - Start and Check the Noise, Vibration, Loosen / Fasteners etc.
 - Product familiarization on Usage
 - Routine maintenance and Storage

Dealer's Office Seal

Dealer Signature.....

Customer Signature.....

Conditions: Operations listed have been performed to my entire satisfaction without any labour charges. Only consumables were charged.



agriculture | horticulture | sericulture | plantations | forestry | garden | health care

WARRANTY AND FREE SERVICE COUPON



ratnagiri impex
MAXIMUM POWER - SUPER ECONOMY

2nd Free Service Coupon

ISO 9001-2015
CERTIFIED COMPANY

FREE SERVICE COUPON (60 Days / 60 hrs (Which ever is earlier))

Model
AM-K425HC-4S KNAPSACK POWER SPRAYER

Serial Number

PDI Date

Purchase bill no.

Date

Service No.

- Operations:
- Check and Test the Fuel Mixture.
 - Check and Clean the Air Filter
 - Check, Clean and Adjust the Spark plug
 - Check and Adjust the Carburetor Tuning
 - Check and Sharpen the cutting Tools
 - Start and Check the Noise, Vibration, Loosen / Fasteners etc.
 - Product familiarization on Usage
 - Routine maintenance and Storage

Dealer's Office Seal

Dealer Signature.....

Customer Signature.....

Conditions: Operations listed have been performed to my entire satisfaction without any labour charges. Only consumables were charged.



agriculture | horticulture | sericulture | plantations | forestry | garden | health care

WARRANTY AND FREE SERVICE COUPON



ratnagiri impex
MAXIMUM POWER - SUPER ECONOMY

3rd Free Service Coupon

ISO 9001-2015
CERTIFIED COMPANY

FREE SERVICE COUPON (90 Days /120hrs (Which ever is earlier))

Model
AM-K425HC-4S KNAPSACK POWER SPRAYER

Serial Number

PDI Date

Purchase bill no.

Date

Service No.

- Operations:
- Check and Test the Fuel Mixture.
 - Check and Clean the Air Filter
 - Check, Clean and Adjust the Spark plug
 - Check and Adjust the Carburetor Tuning
 - Check and Sharpen the cutting Tools
 - Start and Check the Noise, Vibration, Loosen / Fasteners etc.
 - Product familiarization on Usage
 - Routine maintenance and Storage

Dealer's Office Seal

Dealer Signature.....

Customer Signature.....

Conditions: Operations listed have been performed to my entire satisfaction without any labour charges. Only consumables were charged.



agriculture | horticulture | sericulture | plantations | forestry | garden | health care

WARRANTY AND FREE SERVICE COUPON

AGRIMART[®]

FARM EQUIPMENT GREEN CARE SERVICES



Do's & Don'ts

- Always read the instruction manual supplied along with the equipments and understand the correct installation and operating procedures before attempting to use the equipments.
- It is important to use the personal protection equipments such as head helmet with visor, ear defenders, goggles, safety gloves, cut resistant shoes, trousers and jackets while operating potentially dangerous machines.
- Avoid untrained persons using the equipments. Children must not be allowed to handle these equipments.
- Always use genuine spares and accessories in repairs and usage to derive maximum life of the equipments.
- Always keep the equipments in good working condition to minimize loss of output as well as to reduce the pollution and save the environment.
- Do not use the machine within range of persons unless they wear protective clothing.
- Do not operate the machine when fatigued or under the influence of alcohol or drugs.
- For more query kindly contact for our Service Center/Dealer/ franchise



Small and Timely Maintenance - Big Savings

MULTIPLY PROFITS

WITH OUR MULTI CROP, MULTI PURPOSE EQUIPMENTS



Maximum Power - Super Economy
RANGE OF PRODUCTS



BATTERY /
MANUAL
SPRAYER



PORTABLE
POWER
SPRAYER



KNAPSACK
POWER
SPRAYER



ROTARY
TILLER



CHAFF
CUTTER



TEA
PRUNER



FOGGER



POWER
WEEDER



CHAINSAW



ROTARY
TILLER



LAWN
MOWER



HIGH
PRESSURE
WASHER



EARTH
AUGER



RIDE ON
MOWER



our power, your passion
RANGE OF PRODUCTS



Advanced Technology

Advanced Technology

RANGE OF PRODUCTS



BRUSH CUTTER
- PUSH TYPE



BRUSH CUTTER -
BACK PACK



BRUSH CUTTER -
MULTI TOOL



POLE PRUNER



BLOWER
BACK PACK



LAWN MOWER



BRUSH
CUTTER



BACK PACK
BC



TILLER



FOGGER



EARTH
AUGER



Green Panther®

RANGE OF PRODUCTS

OUR RETAIL FORMATS



FARM EQUIPMENT | GREEN CARE | SERVICES



FARM EQUIPMENT | GREEN CARE | SERVICES



FARM EQUIPMENT | GREEN CARE | SERVICES

IMPORTERS & MARKETING BY:

Ratnagiri Impex Pvt. Ltd.

Annapurna House, # 1/1G,

7th Cross New Guddadahalli,

Mysore Road Bangalore - 560 026, India

Ph: 080-26985100/1/2

Email: info@ratnagiriimpex.com



TOLL FREE :
1800-425-3036

www.ratnagiriimpex.com

www.agrimart.in



ratnagiri impex
BRINGING YOU THE FUTURE... NOW

An ISO 9001:2015 Certified Company

agriculture | horticulture | sericulture | plantations | forestry | garden | health care