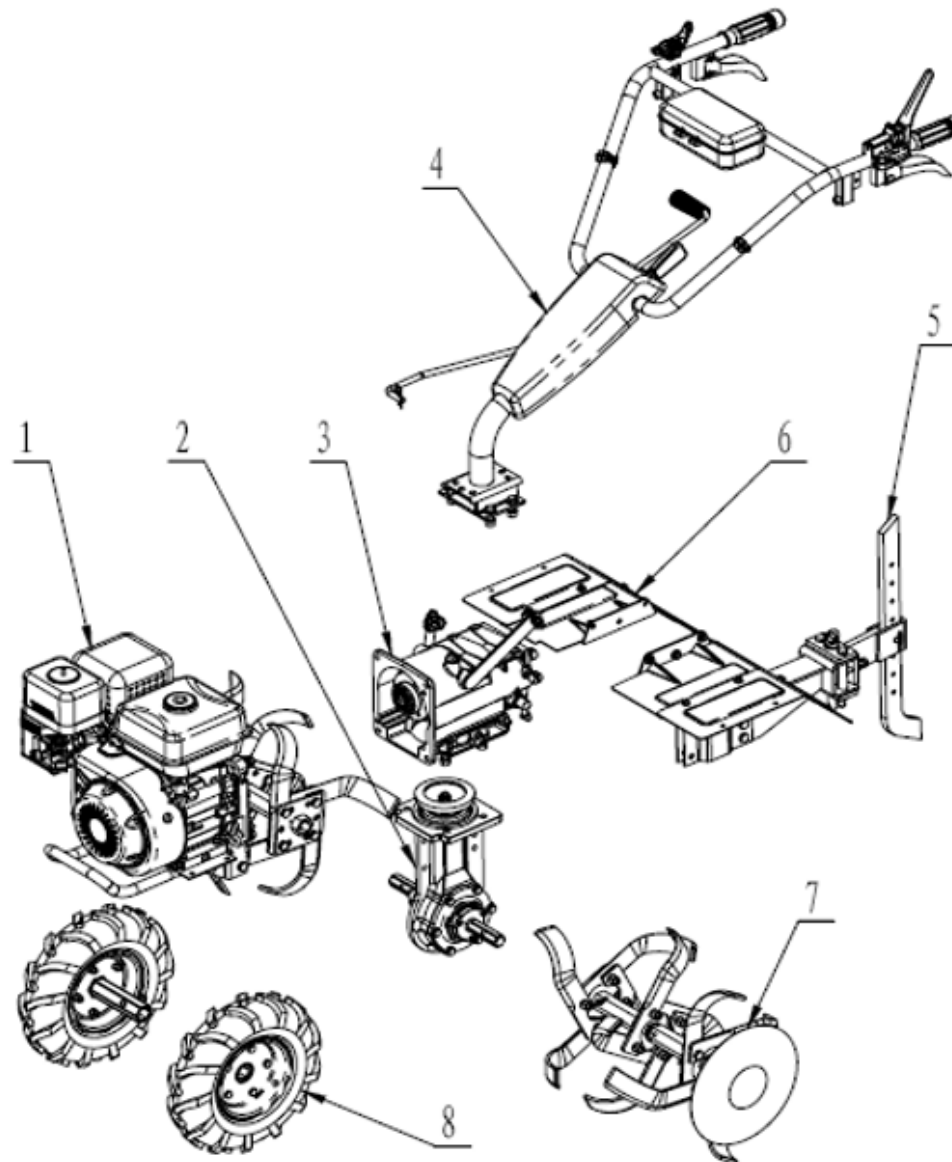


## INTERCULTIVATOR /POWER WEEDER AM-MPT-1100-6D WC SERIES TRANSMISSION DIAGRAM



# TRANSMISSION DIAGRAM & SPARE PARTS LIST OF INTERCULTIVATOR/POWER WEEDER

## MACHINE PARTS - A

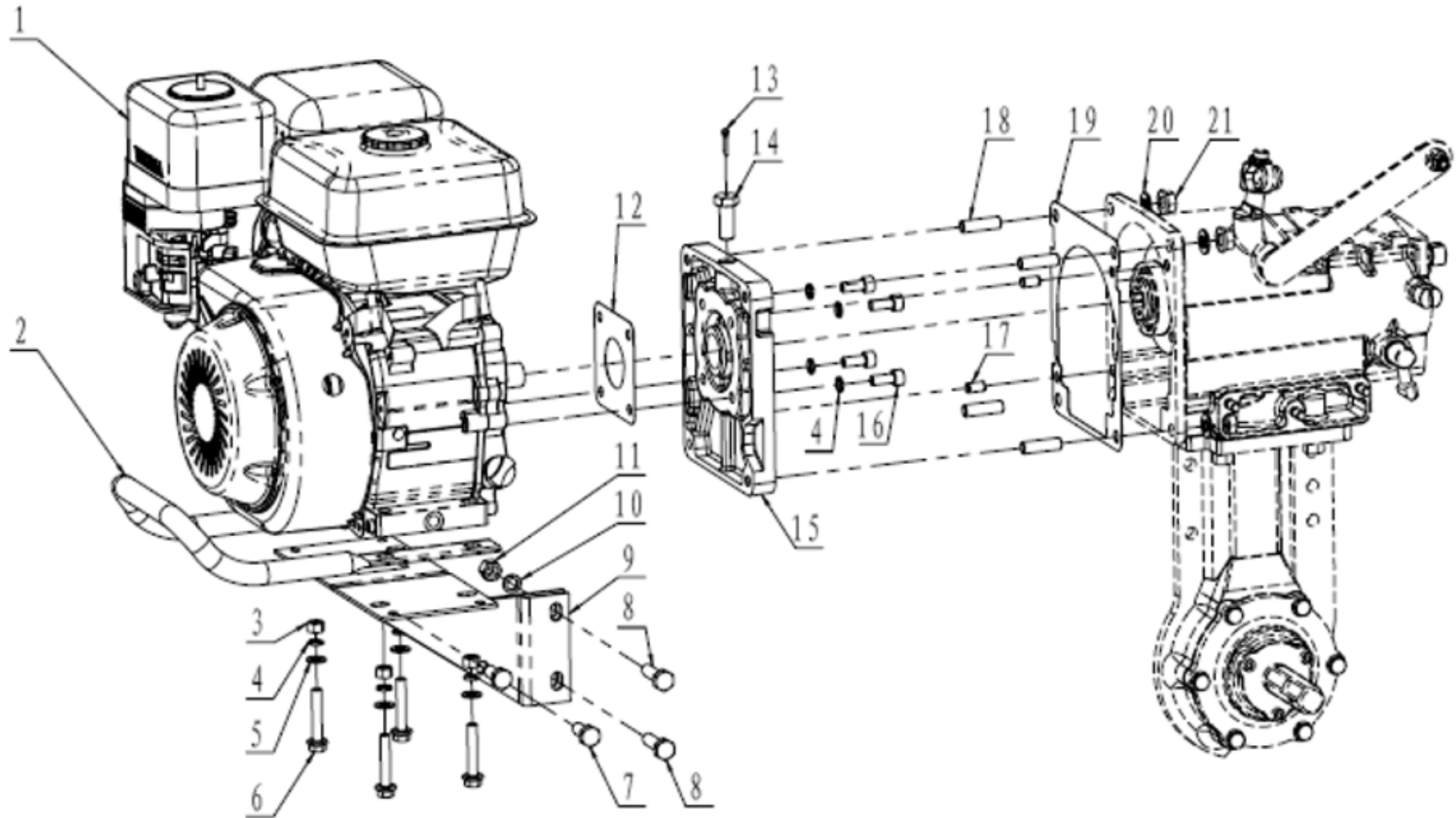


TRANSMISSION DIAGRAM & SPARE PARTS LIST OF INTERCULTIVATOR/POWER WEEDER

SL NO	PART NO	DESCRIPTION	SL NO	PART NO	DESCRIPTION
1	AM-MPTC-1100-6DETA-01	Engine support frame, Bumper			
2	AM-MPTC-1100-6DETA-02	Walking case assy.			
3	AM-MPTC-1100-6DETA-03	Gear box assy			
4	AM-MPTC-1100-6DETA-04	Handrail parts			
5	AM-MPTC-1100-6DETA-05	connecting frame Trailer body			
6	AM-MPTC-1100-6DETA-06	Fender parts			
7	AM-MPTC-1100-6DETA-07	Rotary blades parts			
8	AM-MPTC-1100-6DETA-08	Wheels parts			
9					
10					
11					
12					
13					
14					
15					
16					

# TRANSMISSION DIAGRAM & SPARE PARTS LIST OF INTERCULTIVATOR/POWER WEEDER

## Bumper,Engine Support Frame and Flange - B

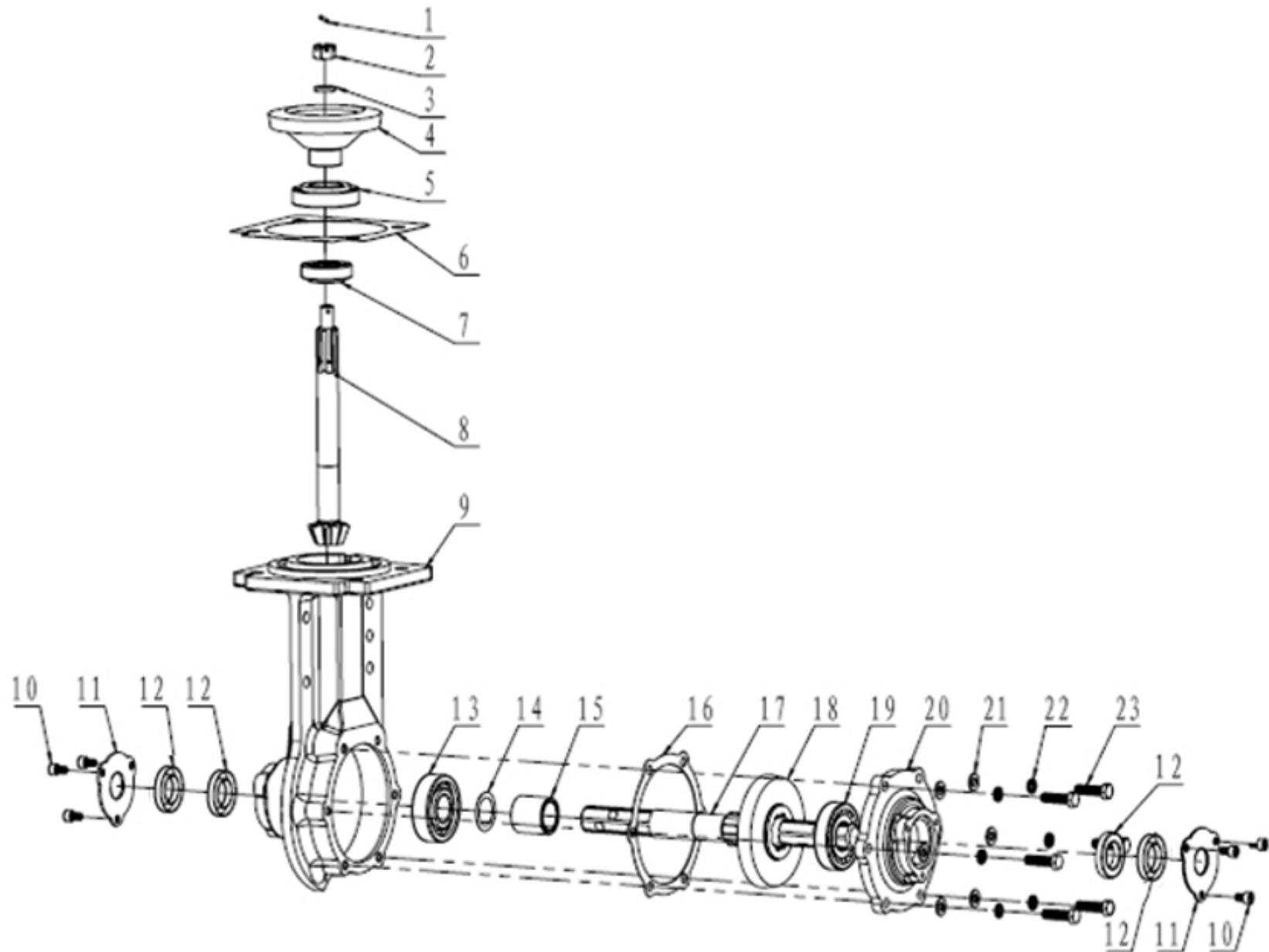


# TRANSMISSION DIAGRAM & SPARE PARTS LIST OF INTERCULTIVATOR/POWER WEEDER

SL NO	PART NO	DESCRIPTION	SL NO	PART NO	DESCRIPTION
1	AM-MPTC-1100-6DETB01	AM 178F ENGINE	17	AM-MPTC-1100-6DETB17	Pin
2	AM-MPTC-1100-6DETB02	Bumper comp	18	AM-MPTC-1100-6DETB18	double end studs
3	AM-MPTC-1100-6DETB03	Hex nut M8(C grade 1 type)	19	AM-MPTC-1100-6DETB19	Aiproof gasket,gear box
4	AM-MPTC-1100-6DETB04	spring washer 8	20	AM-MPTC-1100-6DETB20	Washer
5	AM-MPTC-1100-6DETB05	Washer	21	AM-MPTC-1100-6DETB21	Hex bolt with flange
6	AM-MPTC-1100-6DETB06	Hex bolt with flange			
7	AM-MPTC-1100-6DETB07	Hexagon head bolts-full thread			
8	AM-MPTC-1100-6DETB08	Hexagon head bolts-full thread			
9	AM-MPTC-1100-6DETB09	Engine Support frame+C16			
10	AM-MPTC-1100-6DETB10	Spring washer			
11	AM-MPTC-1100-6DETB11	Hex nut			
12	AM-MPTC-1100-6DETB12	Flange gasket			
13	AM-MPTC-1100-6DETB13	Splitpin			
14	AM-MPTC-1100-6DETB14	Bolt			
15	AM-MPTC-1100-6DETB15	Flange			
16	AM-MPTC-1100-6DETB16	screw			

# TRANSMISSION DIAGRAM & SPARE PARTS LIST OF INTERCULTIVATOR/POWER WEEDER

## WALKING CASE - C

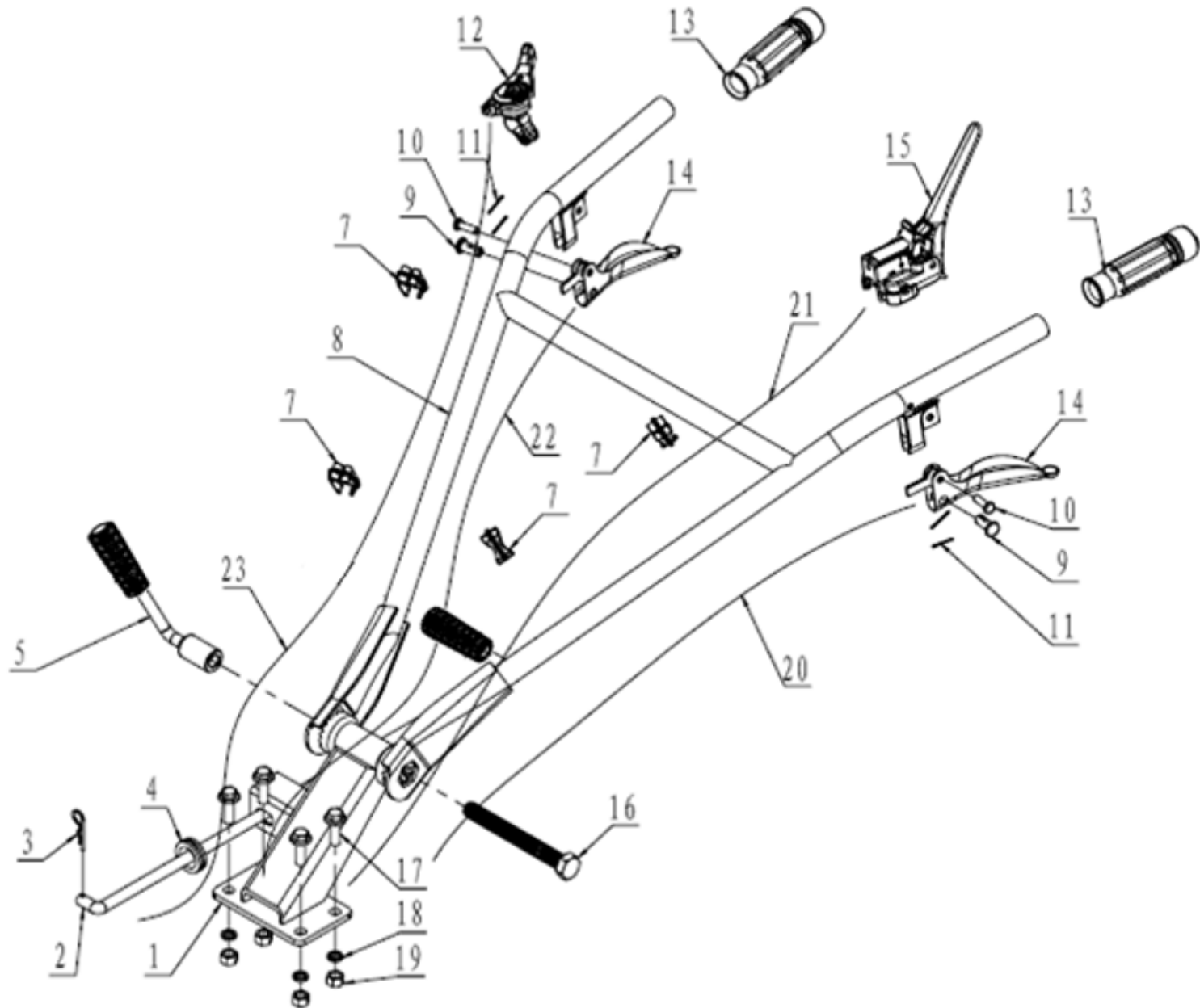


# TRANSMISSION DIAGRAM & SPARE PARTS LIST OF INTERCULTIVATOR/POWER WEEDER

SL NO	PART NO	DESCRIPTION	SL NO	PART NO	DESCRIPTION
1	AM-MPTC-1100-6DE-TC01	Splitpin	17	AM-MPTC-1100-6DE-TC17	Hex output axes
2	AM-MPTC-1100-6DE-TC02	Hex Nut	18	AM-MPTC-1100-6DE-TC18	Walking umbrella gear
3	AM-MPTC-1100-6DE-TC03	spring washer	19	AM-MPTC-1100-6DE-TC19	Taper ball bearing
4	AM-MPTC-1100-6DE-TC04	Driven umbrella gear	20	AM-MPTC-1100-6DE-TC20	Side cover
5	AM-MPTC-1100-6DE-TC05	Taper ball bearing	21	AM-MPTC-1100-6DE-TC21	Washer
6	AM-MPTC-1100-6DE-TC06	gasket	22	AM-MPTC-1100-6DE-TC22	spring washer
7	AM-MPTC-1100-6DE-TC07	Taper ball bearing	23	AM-MPTC-1100-6DE-TC23	Hexagon head bolts
8	AM-MPTC-1100-6DE-TC08	Umbrella gear axes			
9	AM-MPTC-1100-6DE-TC09	Walking case			
10	AM-MPTC-1100-6DE-TC10	screw			
11	AM-MPTC-1100-6DE-TC11	oil seal block,output axes			
12	AM-MPTC-1100-6DE-TC12	Oil seal			
13	AM-MPTC-1100-6DE-TC13	bearing			
14	AM-MPTC-1100-6DE-TC14	Adjusting gasket			
15	AM-MPTC-1100-6DE-TC15	output axes Cover			
16	AM-MPTC-1100-6DE-TC16	Side cover gasket			

# TRANSMISSION DIAGRAM & SPARE PARTS LIST OF INTERCULTIVATOR/POWER WEEDER

## Handle Control Parts - D



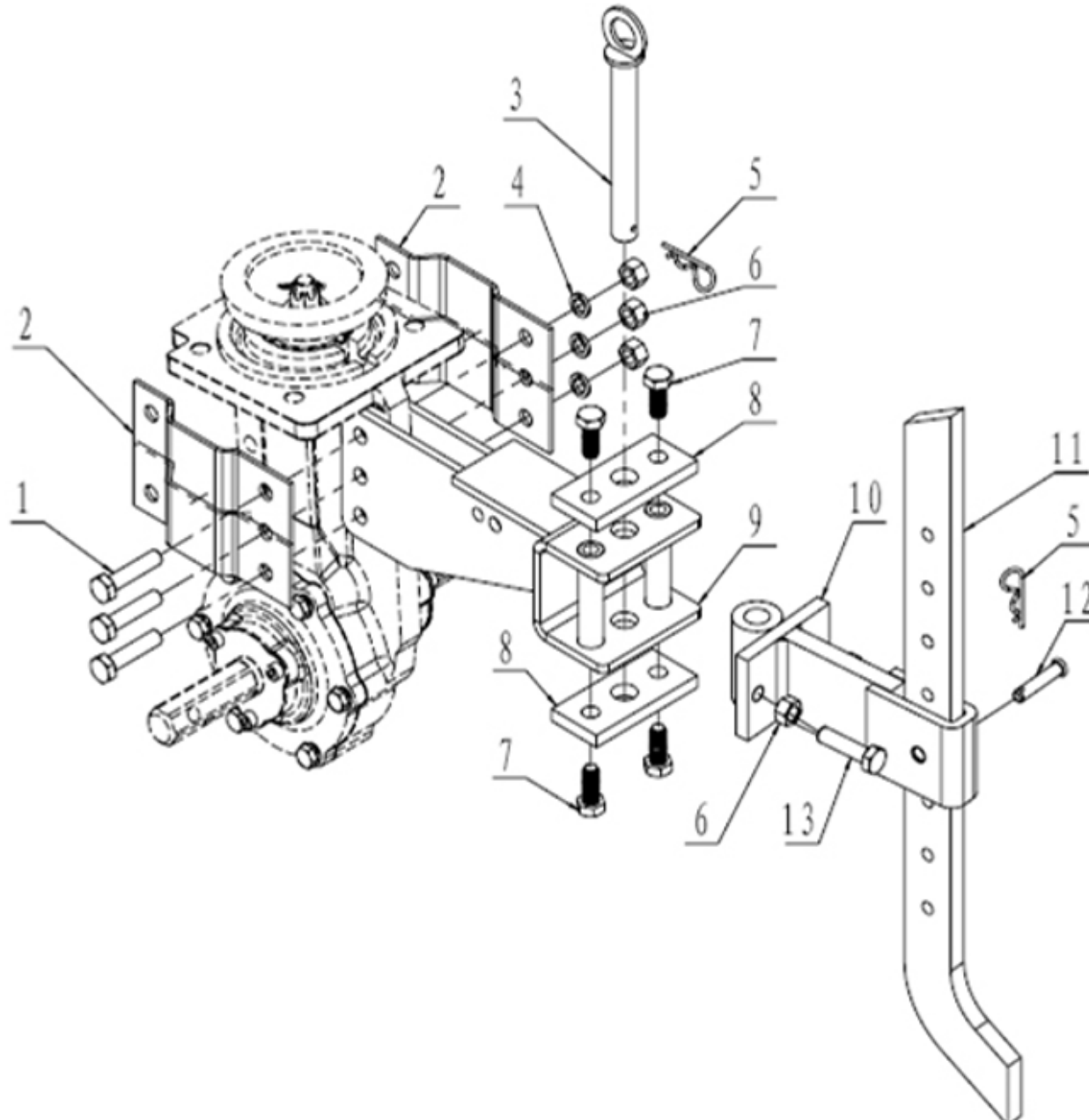


# TRANSMISSION DIAGRAM & SPARE PARTS LIST OF INTERCULTIVATOR/POWER WEEDER

SL NO	PART NO	DESCRIPTION	SL NO	PART NO	DESCRIPTION
1	AM-MPTC-1100-6DE-TE01	Handle seat	17	AM-MPTC-1100-6DE-TE17	spring washer
2	AM-MPTC-1100-6DE-TE02	shift lever	18	AM-MPTC-1100-6DE-TE18	Hex nut
3	AM-MPTC-1100-6DE-TE03	Clip	19	AM-MPTC-1100-6DE-TE19	Clutch Cable
4	AM-MPTC-1100-6DE-TE04	Handle seat wear-sleeve	20	AM-MPTC-1100-6DE-TE20	Flameout Switch Cable Comp
5	AM-MPTC-1100-6DE-TE05	High And Low Lock Comp	21	AM-MPTC-1100-6DE-TE21	Reverse Gear Cable
6	AM-MPTC-1100-6DE-TE06	Clip	22	AM-MPTC-1100-6DE-TE22	Throttle Cable Comp
7	AM-MPTC-1100-6DE-TE07	Handle bar			
8	AM-MPTC-1100-6DE-TE08	lacking cord connector			
9	AM-MPTC-1100-6DE-TE09	Pin			
10	AM-MPTC-1100-6DE-TE10	Splitpin			
11	AM-MPTC-1100-6DE-TE11	Shut Down Switch Comp			
12	AM-MPTC-1100-6DE-TE12	Grip			
13	AM-MPTC-1100-6DE-TE13	Reverse Gear/Clutch Grip			
14	AM-MPTC-1100-6DE-TE14	Emergency stop handlebar			
15	AM-MPTC-1100-6DE-TE15	Hexagon head bolts-full thread			
16	AM-MPTC-1100-6DE-TE16	Hex bolt with flange			

# TRANSMISSION DIAGRAM & SPARE PARTS LIST OF INTERCULTIVATOR/POWER WEEDER

## DRAGGING ASSY CONNECTION FRAME AND RESISTANCE ROD PARTS - F

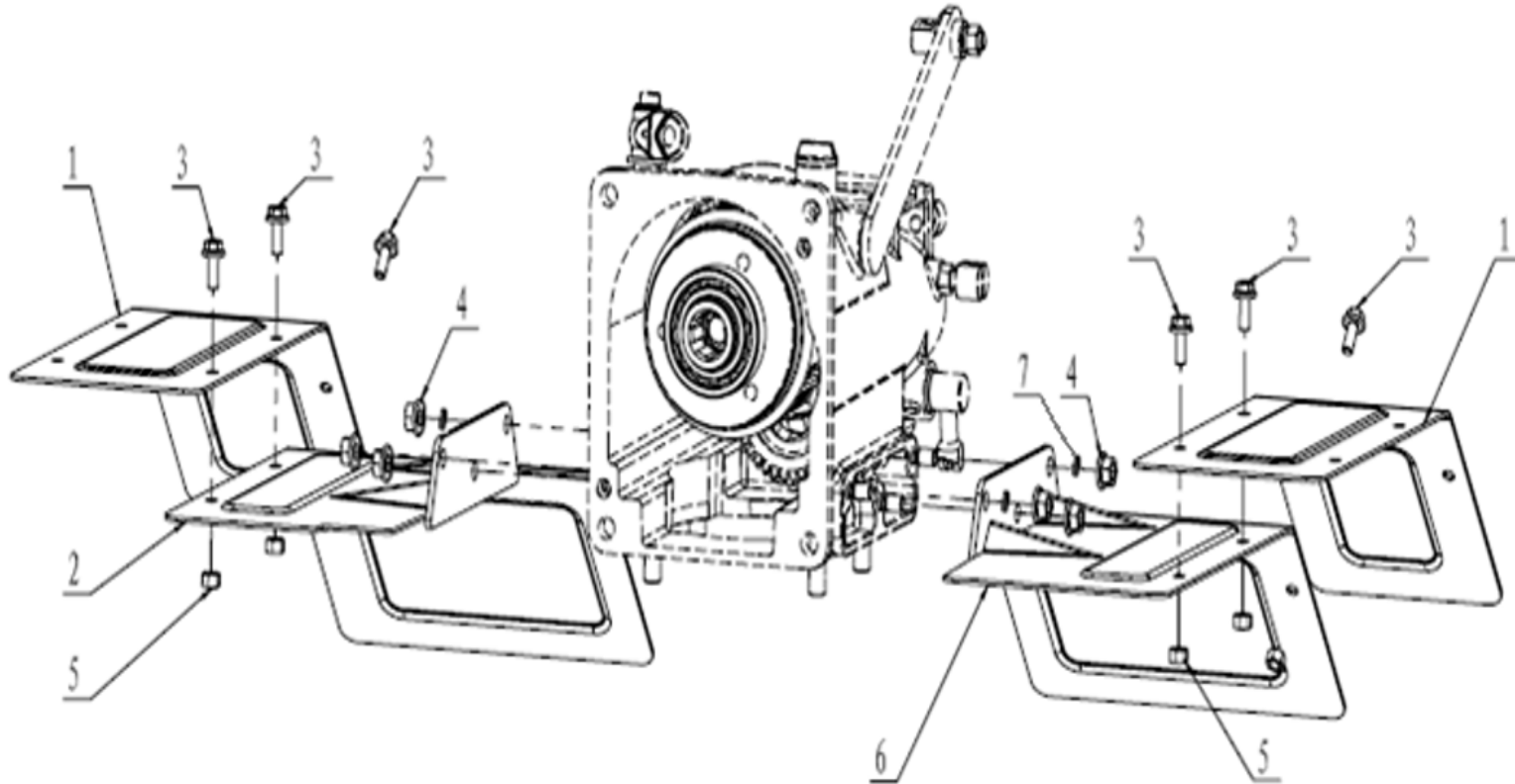


# TRANSMISSION DIAGRAM & SPARE PARTS LIST OF INTERCULTIVATOR/POWER WEEDER

SL NO	PART NO	DESCRIPTION	SL NO	PART NO	DESCRIPTION
1	AM-MPTC-1100-6DE-TF01	Hexagon head bolts-full thread			
2	AM-MPTC-1100-6DE-TF02	Dragging assy connection plate			
3	AM-MPTC-1100-6DE-TF03	Pin with ring			
4	AM-MPTC-1100-6DE-TF04	spring washer			
5	AM-MPTC-1100-6DE-TF05	Clip B			
6	AM-MPTC-1100-6DE-TF06	Hex nut			
7	AM-MPTC-1100-6DE-TF07	Hexagon head bolts-full thread			
8	AM-MPTC-1100-6DE-TF08	Dragging assy reinforced plate			
9	AM-MPTC-1100-6DE-TF09	Dragging assy			
10	AM-MPTC-1100-6DE-TF10	Connection frame			
11	AM-MPTC-1100-6DE-TF11	Resistance rod			
12	AM-MPTC-1100-6DE-TF12	Pin			
13	AM-MPTC-1100-6DE-TF13	Hexagon head bolts-full thread			
14					
15					
16					

# TRANSMISSION DIAGRAM & SPARE PARTS LIST OF INTERCULTIVATOR/POWER WEEDER

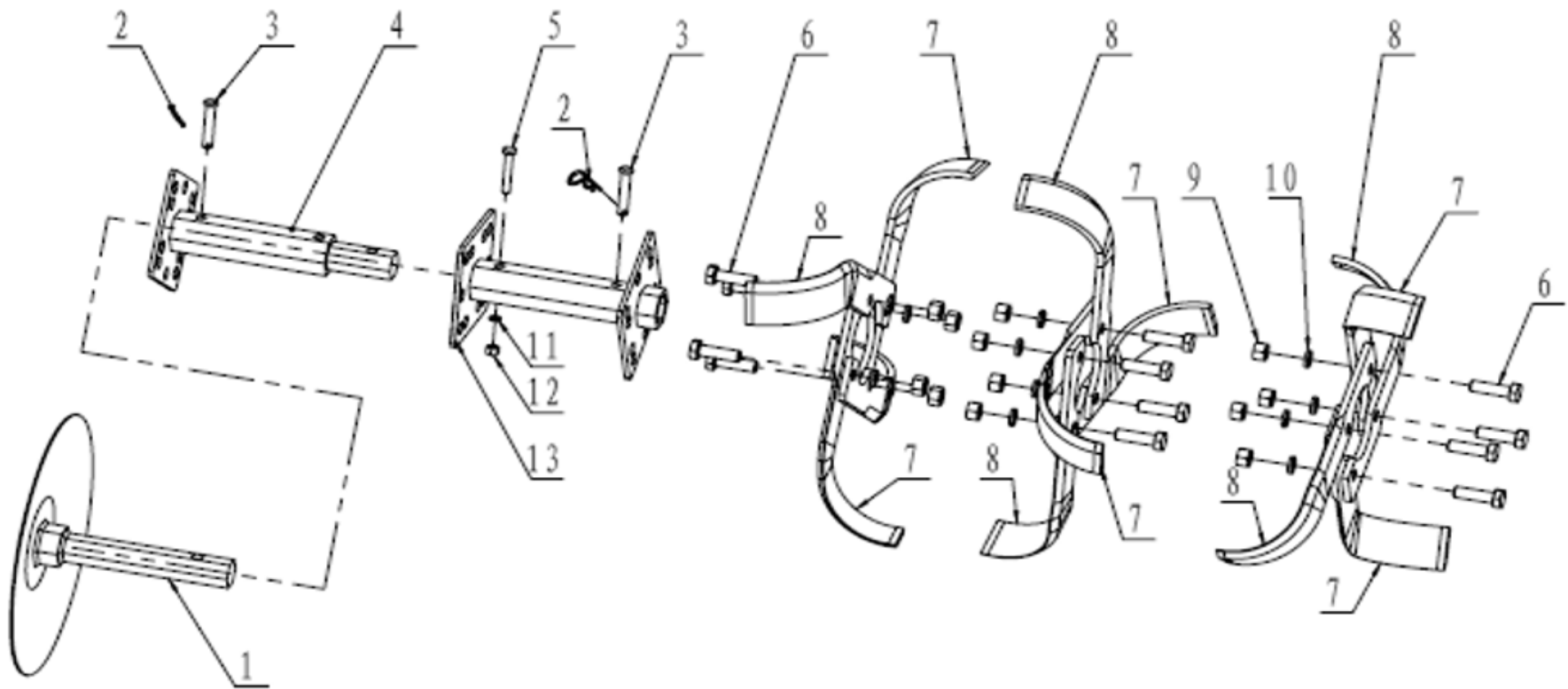
## FFENDER PARTS - G



SL NO	PART NO	DESCRIPTION	SL NO	PART NO	DESCRIPTION
1	AM-MPTC-1100-6DE-TG01	Vice fender	5	AM-MPTC-1100-6DE-TG05	Hex nut
2	AM-MPTC-1100-6DE-TG02	Fender( right)	6	AM-MPTC-1100-6DE-TG06	Fender (left)
3	AM-MPTC-1100-6DE-TG03	Hex bolt with flange	7	AM-MPTC-1100-6DE-TG07	Fender (left)
4	AM-MPTC-1100-6DE-TG04	Hex nut with flange			

# TRANSMISSION DIAGRAM & SPARE PARTS LIST OF INTERCULTIVATOR/POWER WEEDER

## Rotary blades parts - H

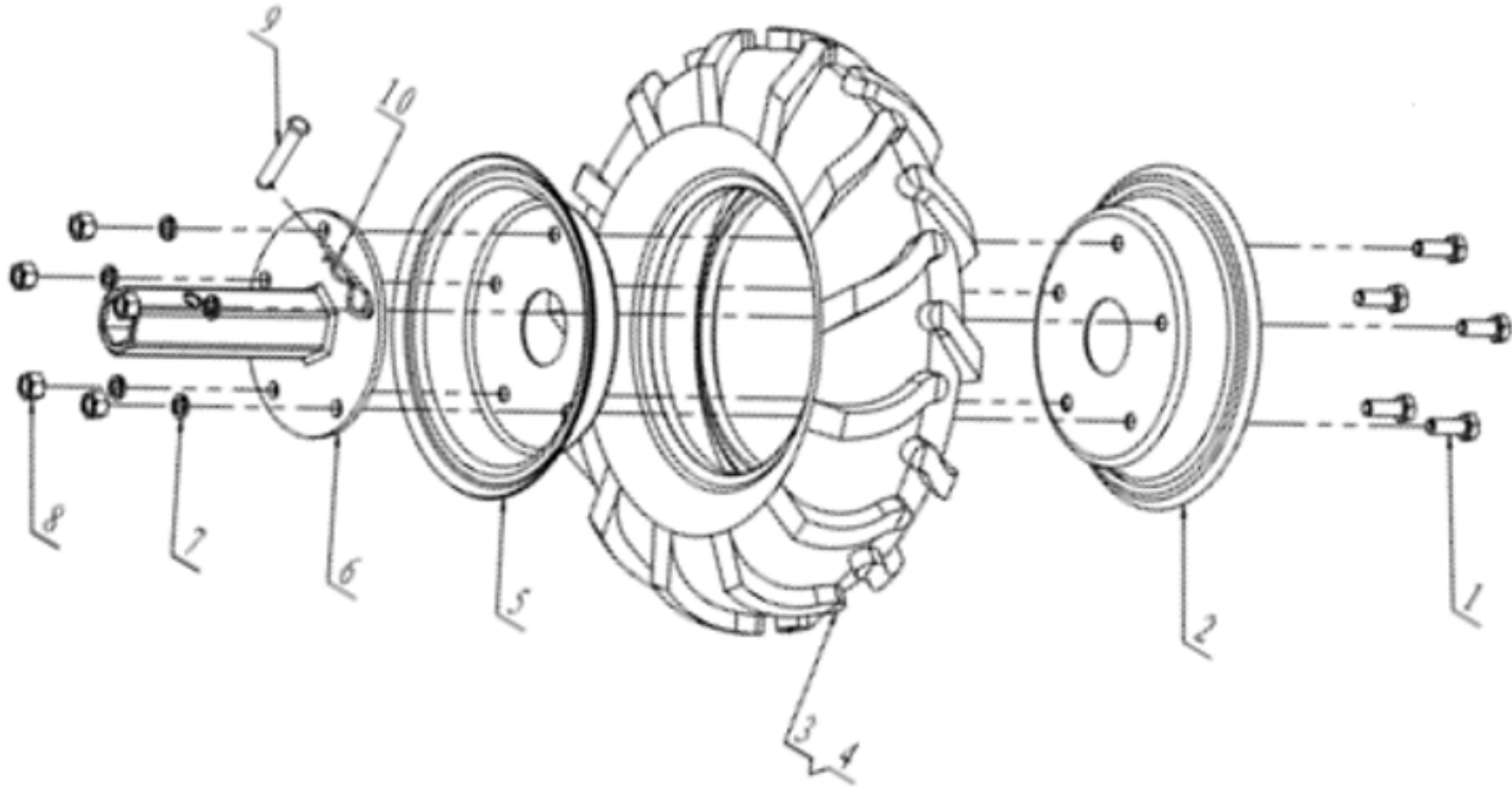


# TRANSMISSION DIAGRAM & SPARE PARTS LIST OF INTERCULTIVATOR/POWER WEEDER

SL NO	PART NO	DESCRIPTION	SL NO	PART NO	DESCRIPTION
1	AM-MPTC-1100-6DE-TH01	Discs (Optional)			
2	AM-MPTC-1100-6DE-TH02	Clip B			
3	AM-MPTC-1100-6DE-TH03	Pin			
4	AM-MPTC-1100-6DE-TH04	Blade tube 2+1+1			
5	AM-MPTC-1100-6DE-TH05	Hexagon head bolts-full thread			
6	AM-MPTC-1100-6DE-TH06	Hexagon head bolts-full thread			
7	AM-MPTC-1100-6DE-TH07	Blade			
8	AM-MPTC-1100-6DE-TH08	Blade			
9	AM-MPTC-1100-6DE-TH09	Hex nut			
10	AM-MPTC-1100-6DE-TH10	spring washer			
11	AM-MPTC-1100-6DE-TH11	spring washer			
12	AM-MPTC-1100-6DE-TH12	Hex nut			
13	AM-MPTC-1100-6DE-TH13	Main tube			

# TRANSMISSION DIAGRAM & SPARE PARTS LIST OF INTERCULTIVATOR/POWER WEEDER

## Wheels parts - J



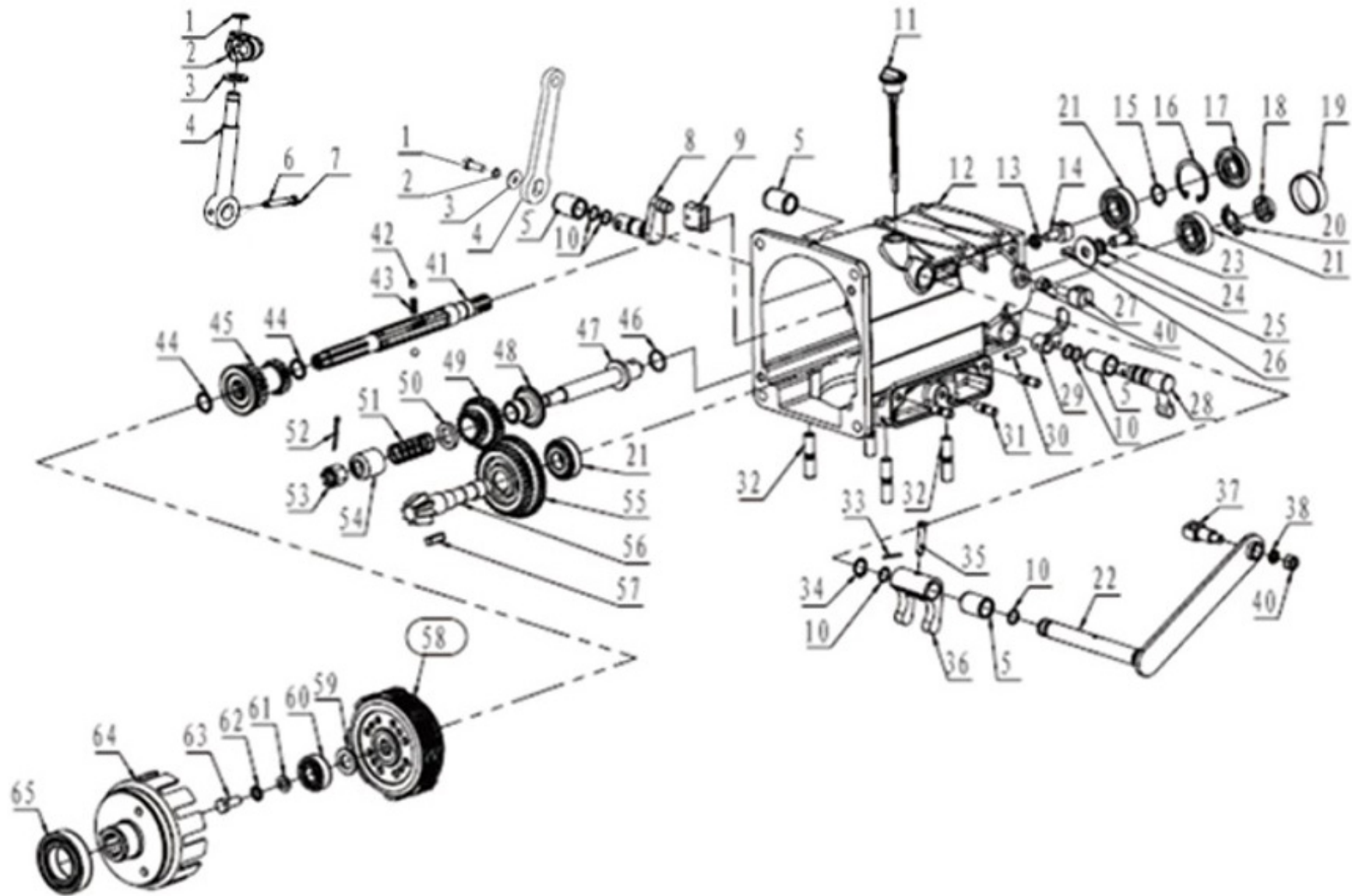
# TRANSMISSION DIAGRAM & SPARE PARTS LIST OF INTERCULTIVATOR/POWER WEEDER

SL NO	PART NO	DESCRIPTION	SL NO	PART NO	DESCRIPTION
1	AM-MPTC-1100-6DE-TJ01	Hexagon head bolts-full thread			
2	AM-MPTC-1100-6DE-TJ02	Spoke (outer side with hole),4.0-8 wheel			
3	AM-MPTC-1100-6DE-TJ03	Tire & TUBE 1SET			
4	AM-MPTC-1100-6DE-TJ04				
5	AM-MPTC-1100-6DE-TJ05	Spoke (inner side),4.0-8 wheel			
6	AM-MPTC-1100-6DE-TJ06	Wheel axle			
7	AM-MPTC-1100-6DE-TJ07	spring washer 10(standard)			
8	AM-MPTC-1100-6DE-TJ08	Hex nut M8(C grade,1 type)			
9	AM-MPTC-1100-6DE-TJ09	Pin			
10	AM-MPTC-1100-6DE-TJ10	Clip B			



# TRANSMISSION DIAGRAM & SPARE PARTS LIST OF INTERCULTIVATOR/POWER WEEDER

## GEAR BOX ASSY - K



# TRANSMISSION DIAGRAM & SPARE PARTS LIST OF INTERCULTIVATOR/POWER WEEDER

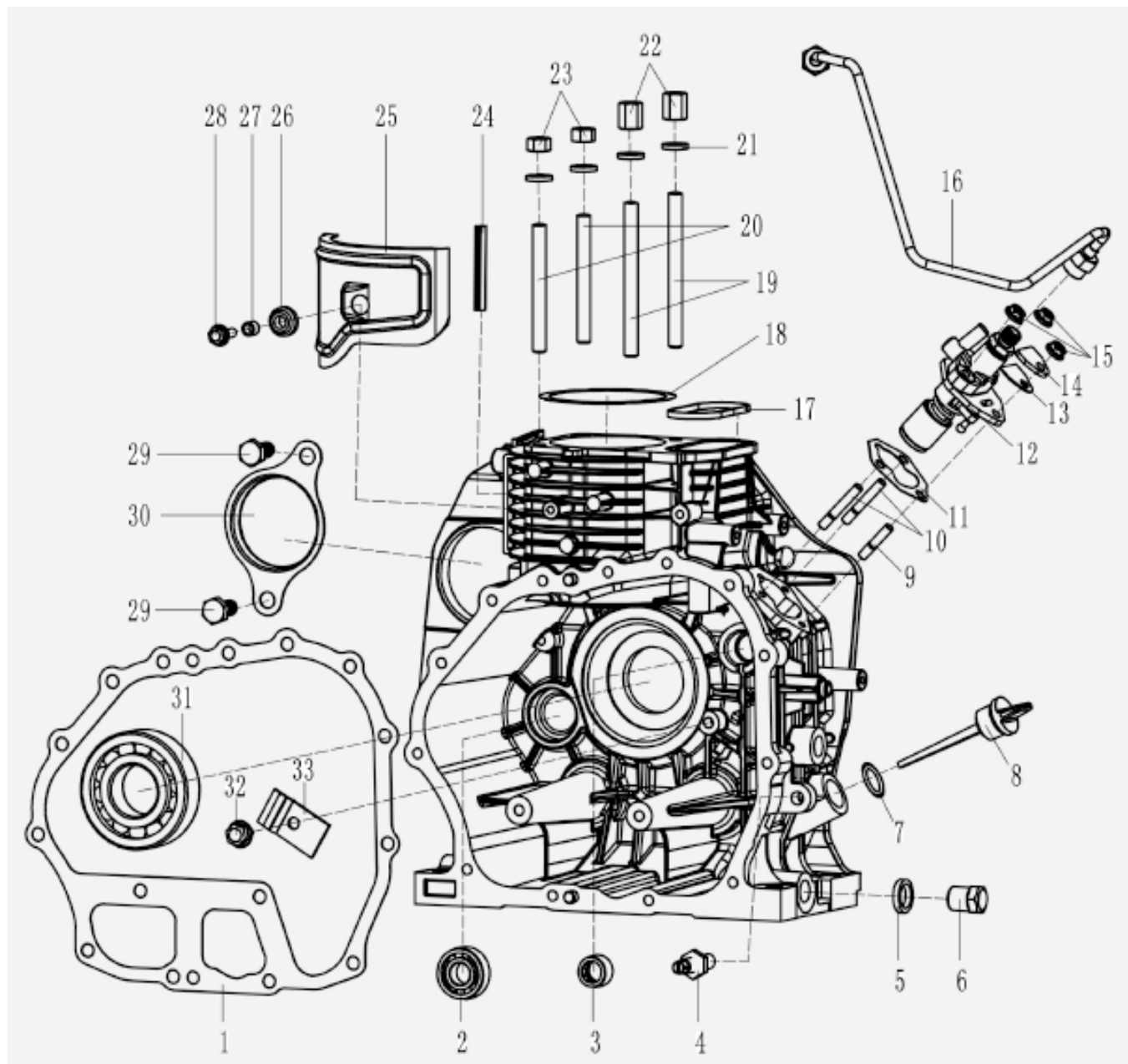
SL NO	PART NO	DESCRIPTION	SL NO	PART NO	DESCRIPTION
1	AM-MPTC-1100-6DE-TK01	Hexagon flange bolt	17	AM-MPTC-1100-6DE-TK17	oil seal
2	AM-MPTC-1100-6DE-TK02	Spring clip	18	AM-MPTC-1100-6DE-TK18	Nut
3	AM-MPTC-1100-6DE-TK03	Extraordinary	19	AM-MPTC-1100-6DE-TK19	oil plug
4	AM-MPTC-1100-6DE-TK04	Sheath Shift Rod	20	AM-MPTC-1100-6DE-TK20	Washer
5	AM-MPTC-1100-6DE-TK05	sheath cluth fork axes	21	AM-MPTC-1100-6DE-TK21	bearing
6	AM-MPTC-1100-6DE-TK06	N/A	22	AM-MPTC-1100-6DE-TK22	cluth fork Axes
7	AM-MPTC-1100-6DE-TK07	N/A	23	AM-MPTC-1100-6DE-TK23	Hexagon head bolts-full thread
8	AM-MPTC-1100-6DE-TK08	Shift Axes	24	AM-MPTC-1100-6DE-TK24	spring washer
9	AM-MPTC-1100-6DE-TK09	Shift fork	25	AM-MPTC-1100-6DE-TK25	Washer
10	AM-MPTC-1100-6DE-TK10	O-ring	26	AM-MPTC-1100-6DE-TK26	round pin
11	AM-MPTC-1100-6DE-TK11	Oil stick	27	AM-MPTC-1100-6DE-TK27	Seat,reverse gear cable
12	AM-MPTC-1100-6DE-TK12	Gear box	28	AM-MPTC-1100-6DE-TK28	Axes,reverse gear fork
13	AM-MPTC-1100-6DE-TK13	Nut	29	AM-MPTC-1100-6DE-TK29	Rever gear fork
14	AM-MPTC-1100-6DE-TK14	Cluth cable Seat	30	AM-MPTC-1100-6DE-TK30	Hex bolt with flange
15	AM-MPTC-1100-6DE-TK15	Washer	31	AM-MPTC-1100-6DE-TK31	Double end studs
16	AM-MPTC-1100-6DE-TK16	Washer	32	AM-MPTC-1100-6DE-TK32	Double end studs

# TRANSMISSION DIAGRAM & SPARE PARTS LIST OF INTERCULTIVATOR/POWER WEEDER

SL NO	PART NO	DESCRIPTION	SL NO	PART NO	DESCRIPTION
33	AM-MPTC-1100-6DE-TK33	Splitpin	50	AM-MPTC-1100-6DE-TK50	Reverse gear Spring seat
34	AM-MPTC-1100-6DE-TK34	spring washer	51	AM-MPTC-1100-6DE-TK51	Splitpin
35	AM-MPTC-1100-6DE-TK35	Pin	52	AM-MPTC-1100-6DE-TK52	Hex nut
36	AM-MPTC-1100-6DE-TK36	cluth fork	53	AM-MPTC-1100-6DE-TK53	Reverse gear Restrict cover
37	AM-MPTC-1100-6DE-TK37	Cluth cable Seat	54	AM-MPTC-1100-6DE-TK54	2nd generation Double gear,countershaft
38	AM-MPTC-1100-6DE-TK38	spring washer 8(standard)	55	AM-MPTC-1100-6DE-TK55	Countershaft
39	AM-MPTC-1100-6DE-TK39	Hex nut	56	AM-MPTC-1100-6DE-TK56	Key
40	AM-MPTC-1100-6DE-TK40	Principal axes(with output)	57	AM-MPTC-1100-6DE-TK57	C lutch Core comp
41	AM-MPTC-1100-6DE-TK41	Steel ball	58	AM-MPTC-1100-6DE-TK58	Clutch washer
42	AM-MPTC-1100-6DE-TK42	Shift lever Spring	59	AM-MPTC-1100-6DE-TK59	bearing
43	AM-MPTC-1100-6DE-TK43	Ring	60	AM-MPTC-1100-6DE-TK60	Washer
44	AM-MPTC-1100-6DE-TK44	2nd generation Iniative gear	61	AM-MPTC-1100-6DE-TK61	Sawtooh loched gasket
45	AM-MPTC-1100-6DE-TK45	O-ring	62	AM-MPTC-1100-6DE-TK62	Hexagon head bolts-full thread
46	AM-MPTC-1100-6DE-TK46	Reverse gear .Axes	63	AM-MPTC-1100-6DE-TK63	Clutch Cover
47	AM-MPTC-1100-6DE-TK47	Reverse gear Pushing plate	64	AM-MPTC-1100-6DE-TK64	Clutch Cover
48	AM-MPTC-1100-6DE-TK48	Double gear,reverse gear	65	AM-MPTC-1100-6DE-TK65	bearing
49	AM-MPTC-1100-6DE-TK49	Reverse gear Spring seat			

# ENGINE DIAGRAM & PART LIST OF INTECULTIVATOR/POWER WEEDER

## Gearbox Assembly, Oil Pump Assembly - TA

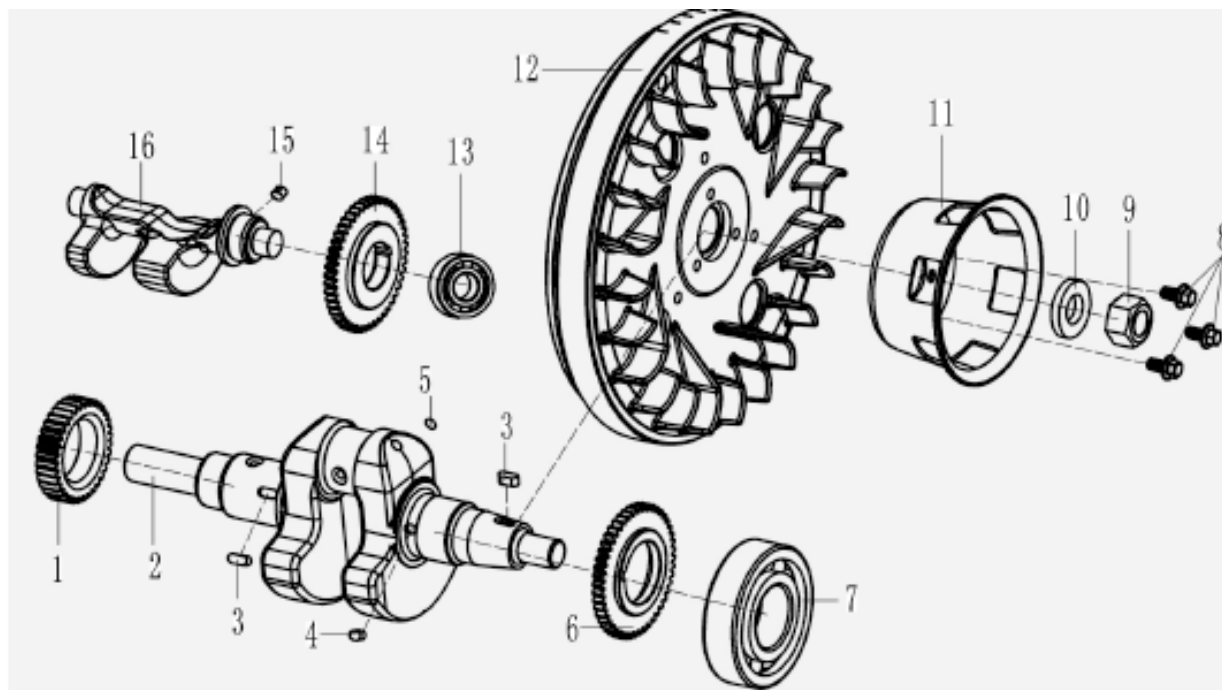


# ENGINE DIAGRAM & PART LIST OF INTECULTIVATOR/POWER WEEDER

SL NO	PART NO	DESCRIPTION	SL NO	PART NO	DESCRIPTION
1	AM-178FD-EA01	Case Cover Gasket	18	AM-178FD-EA18	Cylinder head Gasket
2	AM-178FD-EA02	Bearing	19	AM-178FD-EA19	Cylinder head double stud(long)
3	AM-178FD-EA03	Needle Roller bearing	20	AM-178FD-EA20	Cylinder head double stud(Short)
4	AM-178FD-EA04	Fuel Controller	21	AM-178FD-EA21	Cylinder head nut gasket
5	AM-178FD-EA05	Drain plug Washer	22	AM-178FD-EA22	Cylinder head nut(thick)
6	AM-178FD-EA06	Body Drain bolt	23	AM-178FD-EA23	Cylinder head nut(thin)
7	AM-178FD-EA07	O Ring	24	AM-178FD-EA24	Ejector plate isolation strip
8	AM-178FD-EA08	Oil level Guage	25	AM-178FD-EA25	Ejector plate
9	AM-178FD-EA09	Stud	26	AM-178FD-EA26	Damper sleeve for ejector plat
10	AM-178FD-EA10	Stud	27	AM-178FD-EA27	Ejector plate bushing
11	AM-178FD-EA11	Oil pumpadjusting gasket	28	AM-178FD-EA28	Reel bolt
12	AM-178FD-EA12	Fuel Injection pump assy	29	AM-178FD-EA29	Bolt
13	AM-178FD-EA13	Oil pump gasket	30	AM-178FD-EA30	Motor hole cover plate
14	AM-178FD-EA14	Oil pump seal plate	31	AM-178FD-EA31	Rolling bearing
15	AM-178FD-EA15	Disk nut	32	AM-178FD-EA32	Reel bolt
16	AM-178FD-EA16	High pressure tubing com- penent	33	AM-178FD-EA33	Thrust plate
17	AM-178FD-EA17	Ractangular Seal Ring			

# ENGINE DIAGRAM & PART LIST OF INTECULTIVATOR/POWER WEEDER

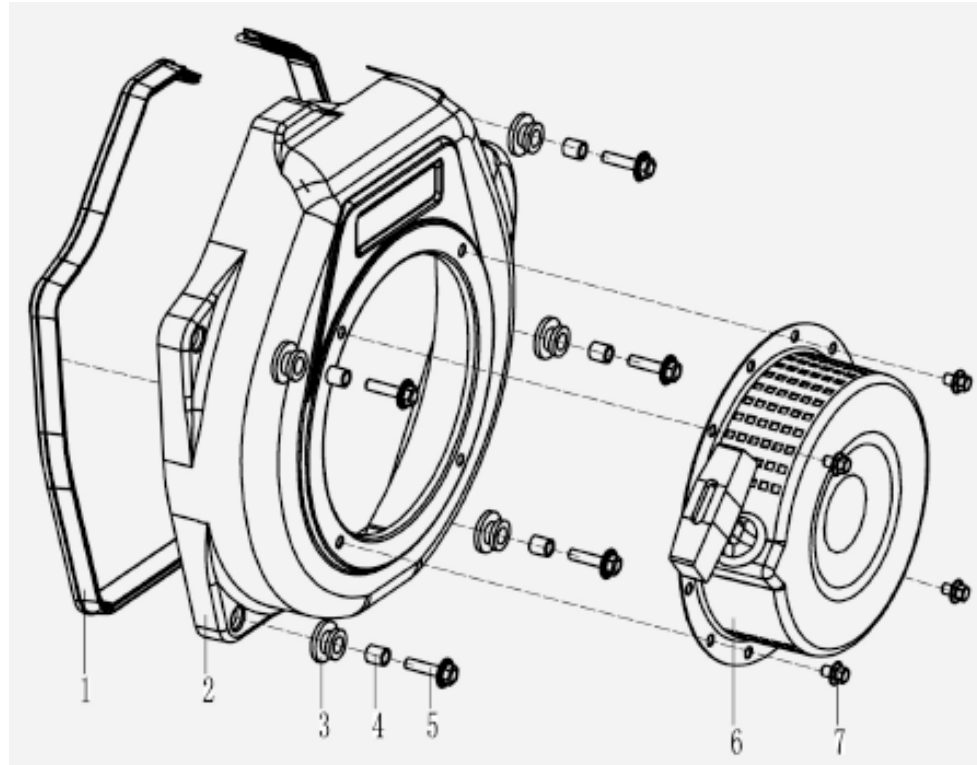
## Crankshaft Flywheel Assembly - B



SL NO	PART NO	DESCRIPTION	SL NO	PART NO	DESCRIPTION
1	AM-178FD-EB01	crankshaft timing gear	9	AM-178FD-EB09	Flywheel Nut
2	AM-178FD-EB02	Crankshaft	10	AM-178FD-EB10	Fly wheel Nut Gasket
3	AM-178FD-EB03	Flat Key	11	AM-178FD-EB11	Starting Cup
4	AM-178FD-EB04	Flat Key	12	AM-178FD-EB12	Flywheel
5	AM-178FD-EB05	Steel Ball	13	AM-178FD-EB13	Deep Groove ball Bearing
6	AM-178FD-EB06	Balance Shaft gear drive	14	AM-178FD-EB14	Balance shaft gear
7	AM-178FD-EB07	Deep Groove ball bearing	15	AM-178FD-EB15	Flat Key
8	AM-178FD-EB08	Reel Bolt	16	AM-178FD-EB16	Balance shaft

# ENGINE DIAGRAM & PART LIST OF INTECULTIVATOR/POWER WEEDER

## Wind Scooper -C

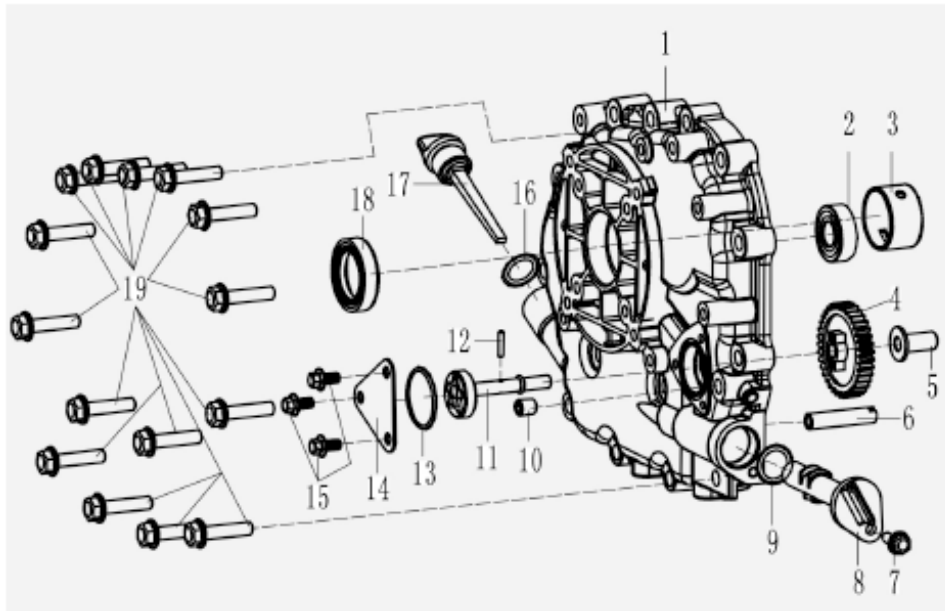


SL NO	PART NO	DESCRIPTION	SL NO	PART NO	DESCRIPTION
1	AM-178FD-EC01	Air Hood seal Strip	5	AM-178FD-EC05	Bolt
2	AM-178FD-EC02	Fly wheel Hood	6	AM-178FD-EC06	Hand Tray Assy
3	AM-178FD-EC03	Damper Rubber Gasket	7	AM-178FD-EC07	Reel Bolt
4	AM-178FD-EC04	Hood bushing			



# ENGINE DIAGRAM & PART LIST OF INTECULTIVATOR/POWER WEEDER

## CRANKCASE COVER ASSY - D

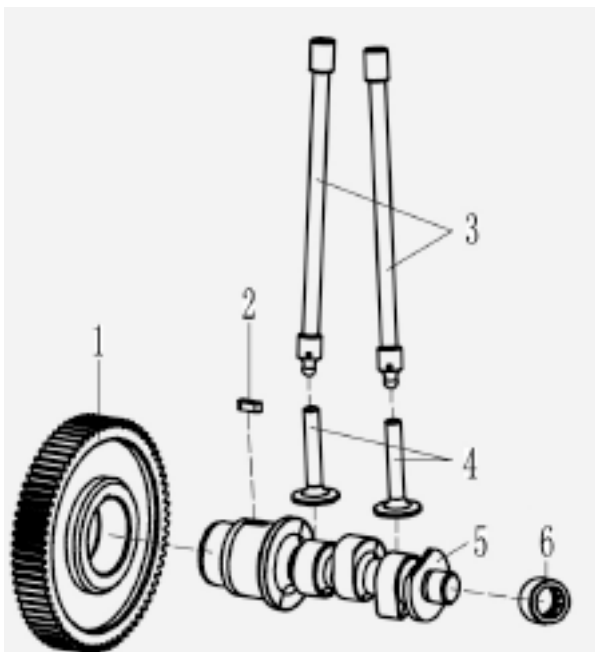


SL NO	PART NO	DESCRIPTION
1	AM-178FD-ED01	Tank Cap
2	AM-178FD-ED02	Bearing
3	AM-178FD-ED03	Crankshaft Bearing
4	AM-178FD-ED04	Governor Gear Unit
5	AM-178FD-ED05	Governor Shaft
6	AM-178FD-ED06	Oil Inlet pipe
7	AM-178FD-ED07	Reel Bolt
8	AM-178FD-ED08	Oil Filter
9	AM-178FD-ED09	O-Ring
10	AM-178FD-ED10	Hexagonal Plug
11	AM-178FD-ED11	Oil Pump Assy
12	AM-178FD-ED12	Cylinder Pin
13	AM-178FD-ED13	O-Ring
14	AM-178FD-ED14	Oil Seperator
15	AM-178FD-ED15	Reel Bolt
16	AM-178FD-ED16	O-Ring
17	AM-178FD-ED17	Oil Level Guage
18	AM-178FD-ED18	Oil Seal
19	AM-178FD-ED19	Reel Bolt



# ENGINE DIAGRAM & PART LIST OF INTECULTIVATOR/POWER WEEDER

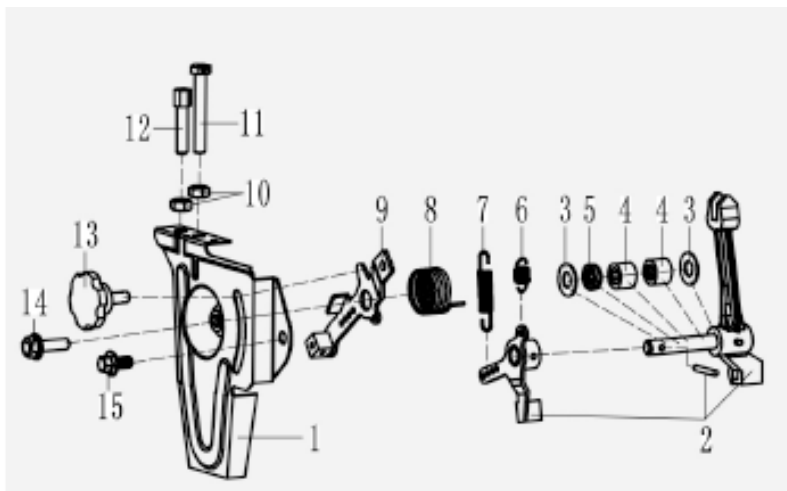
## CAMSHAFT SYSTEM - E



SL NO	PART NO	DESCRIPTION
1	AM-178FD-EE01	Camshaft Timing Gear
2	AM-178FD-EE02	Flat Key
3	AM-178FD-EE03	Valve Push Rod
4	AM-178FD-EE04	Valve Lifter
5	AM-178FD-EE05	Camshaft
6	AM-178FD-EE06	Ball Bearing

# ENGINE DIAGRAM & PART LIST OF INTECULTIVATOR/POWER WEEDER

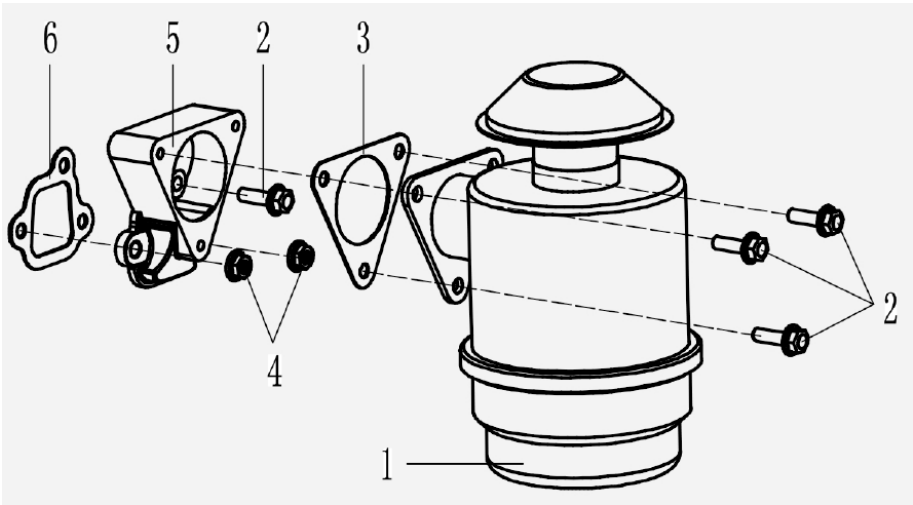
## First Gear Speed Control Panel - F



SL NO	PART NO	DESCRIPTION
1	AM-178FD-EF01	First Gear Governor
2	AM-178FD-EF02	Yoke Assy
3	AM-178FD-EF03	Lever shaft washer
4	AM-178FD-EF04	Needle Roller Bearing
5	AM-178FD-EF05	Lever shaft Oil seal
6	AM-178FD-EF06	Trimmer Spring
7	AM-178FD-EF07	Adjustable speed Spring
8	AM-178FD-EF08	Retun Spring
9	AM-178FD-EF09	Speed control Lever
10	AM-178FD-EF10	Bolt
11	AM-178FD-EF11	High Speed limit bolt
12	AM-178FD-EF12	Guy Bolt
13	AM-178FD-EF13	Governor Handle
14	AM-178FD-EF14	Reel Bolt
15	AM-178FD-EF15	Reel Bolt

ENGINE DIAGRAM & PART LIST OF INTECULTIVATOR/POWER WEEDER

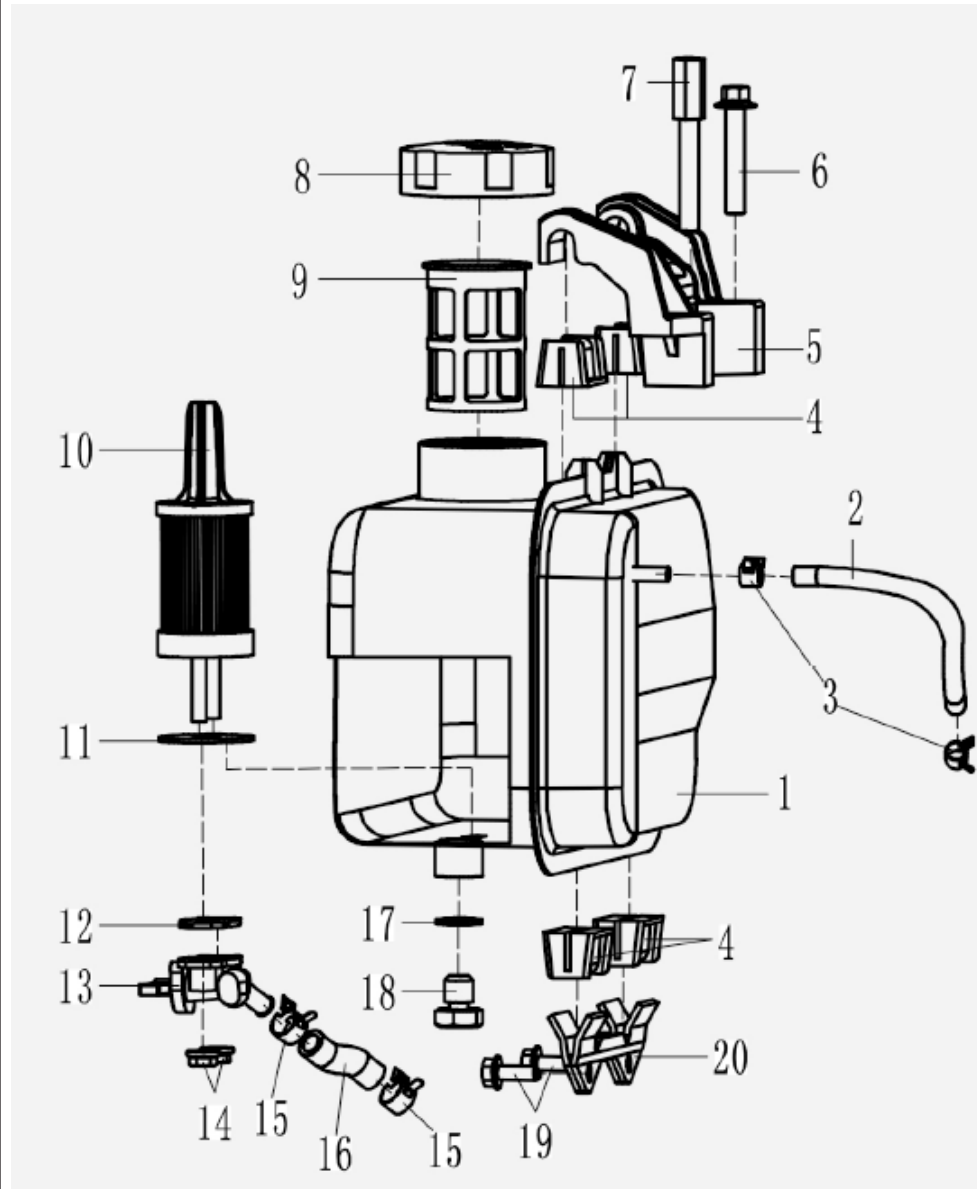
AIR FILTER - G



SL NO	PART NO	DESCRIPTION
1	AM-178FD-EG01	Air Filter
2	AM-178FD-EG02	Reel Bolt
3	AM-178FD-EG03	Air Filter Gasket
4	AM-178FD-EG04	Reel Nut
5	AM-178FD-EG05	Land
6	AM-178FD-EG06	Land Gasket

# ENGINE DIAGRAM & PART LIST OF INTECULTIVATOR/POWER WEEDER

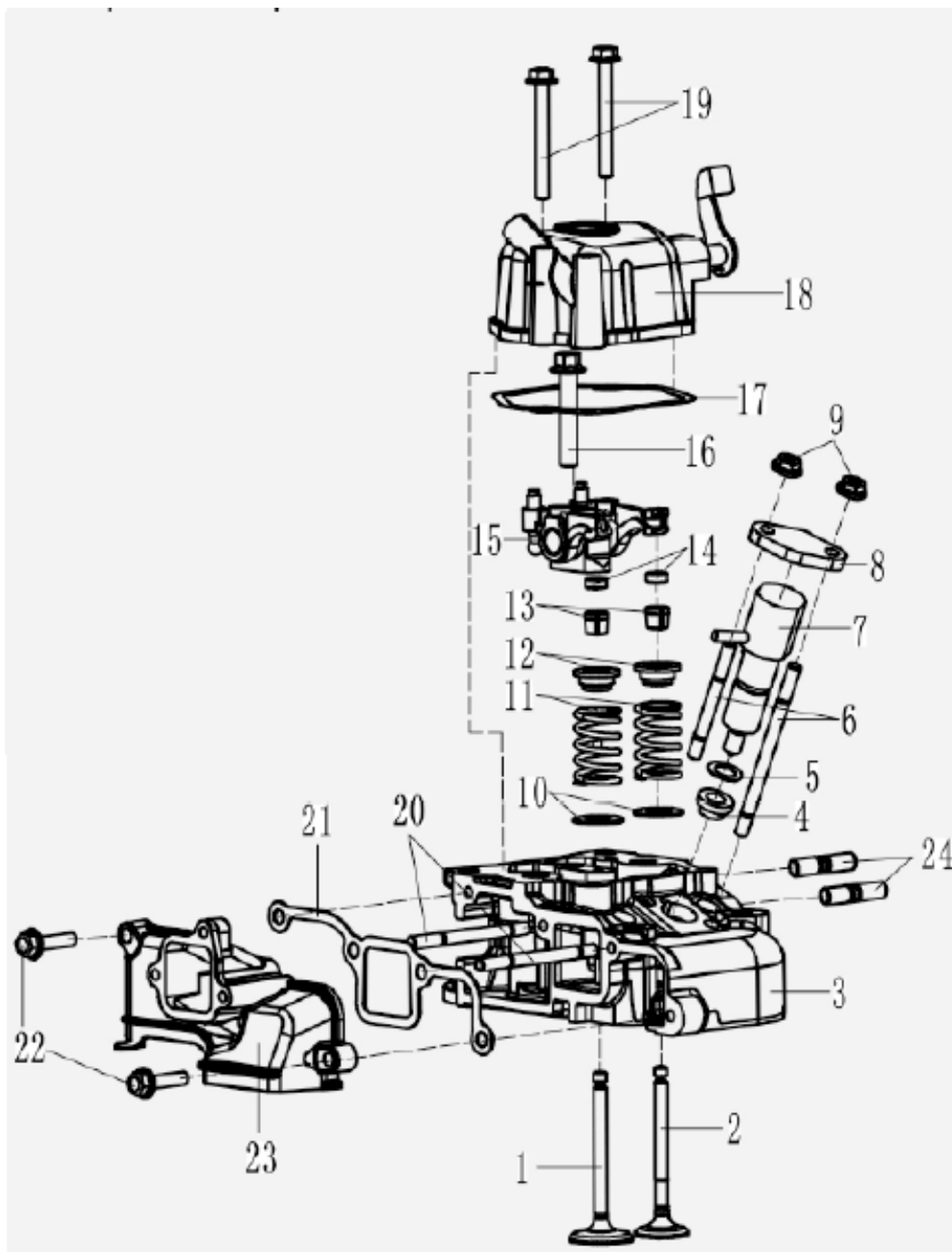
## FUEL TANK ASSY - H



SL NO	PART NO	DESCRIPTION
1	AM-178FD-EH01	Tank welded parts
2	AM-178FD-EH02	Oil return Pipe
3	AM-178FD-EH03	Return pipe Clamp
4	AM-178FD-EH04	Tank Shock pad
5	AM-178FD-EH05	Fuel Tank Bracket
6	AM-178FD-EH06	Bolt
7	AM-178FD-EH07	Fuel Tank Bracket
8	AM-178FD-EH08	Fuel tankCap Components
9	AM-178FD-EH09	Fuel Fliter
10	AM-178FD-EH10	Fuel Filter component
11	AM-178FD-EH11	Fuel Filter gasket
12	AM-178FD-EH12	Fuel Tank Switch Gasket
13	AM-178FD-EH13	Tank Switch Unit
14	AM-178FD-EH14	Reel Nut
15	AM-178FD-EH15	Clamp
16	AM-178FD-EH16	Oil Delivery pipe
17	AM-178FD-EH17	Gasket
18	AM-178FD-EH18	Fuel tank drain Bolt
19	AM-178FD-EH19	Reel Bolt
20	AM-178FD-EH20	Lower Tank Assy

# ENGINE DIAGRAM & PART LIST OF INTECULTIVATOR/POWER WEEDER

## Cylinder Head Assy - J

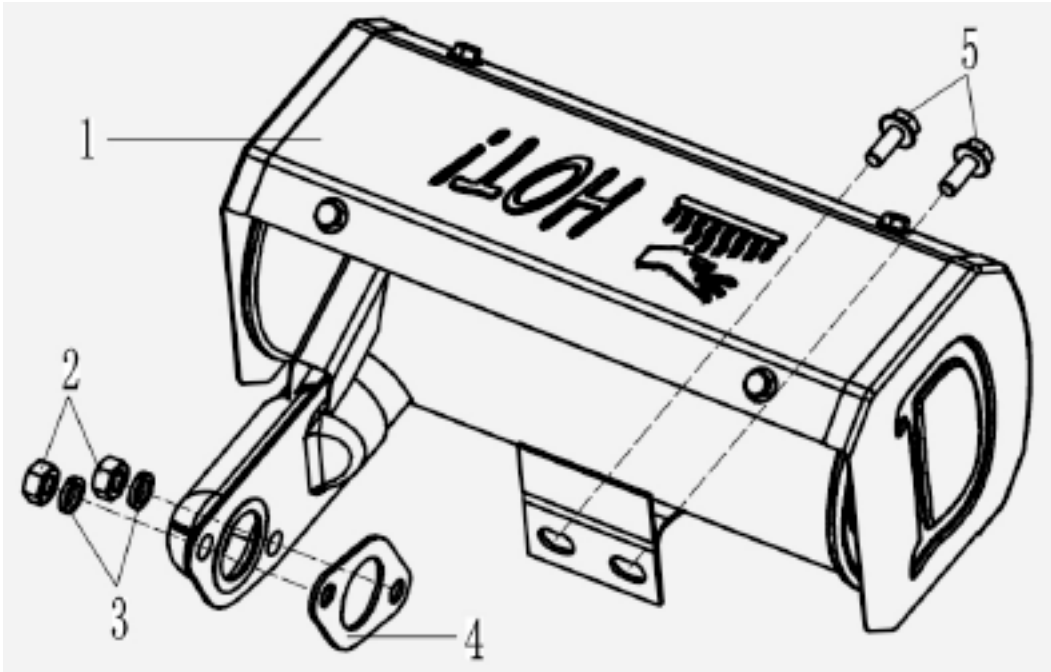


# ENGINE DIAGRAM & PART LIST OF INTECULTIVATOR/POWER WEEDER

SL NO	PART NO	DESCRIPTION	SL NO	PART NO	DESCRIPTION
1	AM-178FD-EJ01	Inlet Valve	13	AM-178FD-EJ13	Valve Clamp
2	AM-178FD-EJ02	Exhaust Valve	14	AM-178FD-EJ14	Valve adjustment pad
3	AM-178FD-EJ03	Cylinder Head	15	AM-178FD-EJ15	Rocker arm Assy
4	AM-178FD-EJ04	Fuel Injector Bush	16	AM-178FD-EJ16	Reel Bolt
5	AM-178FD-EJ05	Fuel injector Gasket	17	AM-178FD-EJ17	Cylinder Head Cover Gasket
6	AM-178FD-EJ06	Stud	18	AM-178FD-EJ18	Cylinder head cover component
7	AM-178FD-EJ07	Oil injector Assy	19	AM-178FD-EJ19	Reel Bolt
8	AM-178FD-EJ08	Fuel Injector Clamp	20	AM-178FD-EJ20	Stud
9	AM-178FD-EJ09	Reel Bolt	21	AM-178FD-EJ21	Inlet Gasket
10	AM-178FD-EJ10	Valve Spring Washer	22	AM-178FD-EJ22	Reel Bolt
11	AM-178FD-EJ11	Valve Spring	23	AM-178FD-EJ23	Inlet Pipe
12	AM-178FD-EJ12	Valve Spring Retainer	24	AM-178FD-EJ24	Stud

ENGINE DIAGRAM & PART LIST OF INTECULTIVATOR/POWER WEEDER

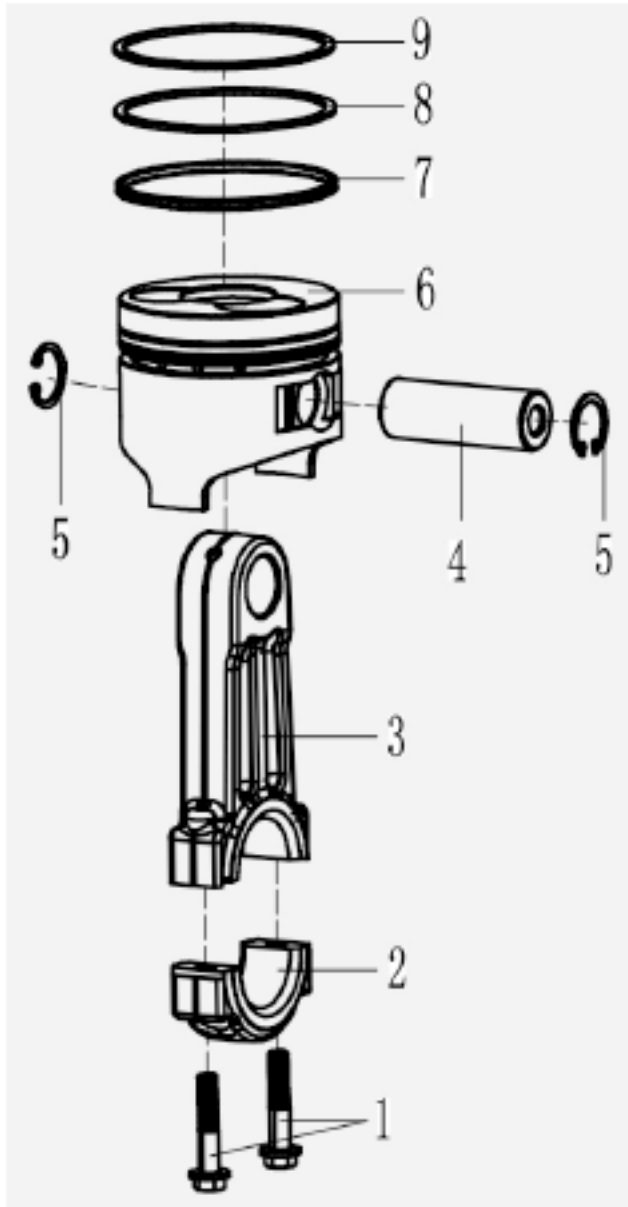
MUFFLER ASSY - K



SL NO	PART NO	DESCRIPTION	SL NO	PART NO	DESCRIPTION
1	AM-178FD-EK01	Muffler component	4	AM-178FD-EK04	Muffler Gasket
2	AM-178FD-EK02	Nut	5	AM-178FD-EK05	Reel Bolt
3	AM-178FD-EK03	Spring washer			

# ENGINE DIAGRAM & PART LIST OF INTECULTIVATOR/POWER WEEDER

## PISTON ROD ASSY - L



SL NO	PART NO	DESCRIPTION
1	AM-178FD-EL01	Connecting Rod Bolt
2	AM-178FD-EL02	Connecting Rod Cap
3	AM-178FD-EL03	Conecting Rod Bosy
4	AM-178FD-EL04	Piston Pin
5	AM-178FD-EL05	Piston Pin Retainer
6	AM-178FD-EL06	Piston
7	AM-178FD-EL07	Oil Ring
8	AM-178FD-EL08	Second compression Ring
9	AM-178FD-EL09	First compressing Ring



## INSPECTION & MAINTAINANCE

For safety use, make sure the machine is cleaned every three months. Before working, make sure to inspect the filter and the nozzle and ensure there is no impurity. After working, make sure there is no water in the pump and the hose.

If the machine needs to be repaired in the guarantee period, please return the machine to the shop. You need to provide the certificate of purchase on order to repair or get the substitute.

Before packing, the machine should be cleaned, then use closed packaging, packaging should be firm. Store the machine in dry place.

For transportation safety. The machine should comply with ISTA.

Do not dispose of electrical machines as unsorted municipal waste, use separate collection facilities.

If electrical machines are disposed of in landfills or dumps, hazardous substances can leak into the ground water and get into the food chain, damaging your health and well being.

When replacing old machines with new ones, the retailer is legally obligated to take back your old machine for disposals at least free of charge.

# WARRANTY CARD

## CUSTOMER COPY

DATE _____	DATE OF DELIVERY _____	DEALERS OFFICIAL SEAL	DEALERS SIGN _____
PURCHASERS NAME & ADDRESS _____ _____ _____	<div>CUSTOMER SIGN</div>	<div></div>	
PRODUCT NAME	PRODUCT SERIAL NO.	INVOICE/DN NO.	
<div></div>	<div></div>	<div></div>	
I/Will accept the terms and conditions of warranty as in the warranty card			

## DEALERS COPY

DATE _____	DATE OF DELIVERY _____	DEALERS OFFICIAL SEAL	DEALERS SIGN _____
PURCHASERS NAME & ADDRESS _____ _____ _____	<div>CUSTOMER SIGN</div>	<div></div>	
PRODUCT NAME	PRODUCT SERIAL NO.	INVOICE/DN NO.	
<div></div>	<div></div>	<div></div>	
I/Will accept the terms and conditions of warranty as in the warranty card			

## COMPANY COPY

DATE _____	DATE OF DELIVERY _____	DEALERS OFFICIAL SEAL	DEALERS SIGN _____
PURCHASERS NAME & ADDRESS _____ _____ _____	<div>CUSTOMER SIGN</div>	<div></div>	
PRODUCT NAME	PRODUCT SERIAL NO.	INVOICE/DN NO.	
<div></div>	<div></div>	<div></div>	
I/Will accept the terms and conditions of warranty as in the warranty card			

1. LIMITED WARRANTY PERIOD : For a period of six months from the date of Sale / delivery of the product which ever is earlier. 2. LIMITED WARRANTY OBLIGATION : Replacement of defective part(s) by authorized dealer are free of charges. If found defective by reasons of defective material / poor workmanship, parts will be replaced and there will be no value re-imbursement. 3. TERMS & CONDITIONS : a. Claims under warranty will be accepted on submission of Warranty Card duly filled and stamped by authorized dealer together with the original purchase document. : b. Shipping / transportation / Incidental charges incurred in replacing defective parts under warranty shall be borne by the purchaser

WARRANTY null & void if  
(i) Lack of maintenance, (ii) Incorrect use of the machine or tampering, (iii) Use of non-genuine spare parts, (iv) Usage of acids, solvents, or any flammable materials, (v) Non-usage of filter water / clear water / soft water & using water above 40°C temperature, (vi) While using the pressure washers to draw water which is contaminated with dust & solvents (eg. paint thinners, gasoline, oil, etc.), (vii) Repair done by unauthorized service people, (viii) Those parts subject to wear & tear due to normal operations and plastic parts, rubber items etc, (ix) Loose connections, faulty electrical fixtures & fluctuations in power supply.  
4. Should any failure occur during or after the warranty period, customer does not have the right to interrupt payment / price discount.  
5. Incidental or consequential damages like inconvenience commercial loss, loss of tie, mental agony etc.  
6. Loss of any nature due to operation or non-operation is not covered under warranty.  
7. All free service are at Dealer's service point only.  
8. Warranty ceases if service is not done periodically.  
9. The attached card should be completed and returned to Ratnagiri Impex Pvt. Ltd. for registration immediately after sale / delivery.  
10. The warranty is void unless you register the warranty card with Ratnagiri Impex Pvt. Ltd.  
11. The decision of Ratnagiri Impex Pvt. Ltd., in settling the warranty is final in all respects.  
12. All disputes are subject to Bangalore Courts Jurisdiction

1. LIMITED WARRANTY PERIOD : For a period of six months from the date of Sale / delivery of the product which ever is earlier. 2. LIMITED WARRANTY OBLIGATION : Replacement of defective part(s) by authorized dealer are free of charges. If found defective by reasons of defective material / poor workmanship, parts will be replaced and there will be no value re-imbursement. 3. TERMS & CONDITIONS : a. Claims under warranty will be accepted on submission of Warranty Card duly filled and stamped by authorized dealer together with the original purchase document. : b. Shipping / transportation / Incidental charges incurred in replacing defective parts under warranty shall be borne by the purchaser.  
WARRANTY null & void if  
(i) Lack of maintenance, (ii) Incorrect use of the machine or tampering, (iii) Use of non-genuine spare parts, (iv) Usage of acids, solvents, or any flammable materials, (v) Non-usage of filter water / clear water / soft water & using water above 40°C temperature, (vi) While using the pressure washers to draw water which is contaminated with dust & solvents (eg. paint thinners, gasoline, oil, etc.), (vii) Repair done by unauthorized service people, (viii) Those parts subject to wear & tear due to normal operations and plastic parts, rubber items etc, (ix) Loose connections, faulty electrical fixtures & fluctuations in power supply.  
4. Should any failure occur during or after the warranty period, customer does not have the right to interrupt payment / price discount.  
5. Incidental or consequential damages like inconvenience commercial loss, loss of tie, mental agony etc.  
6. Loss of any nature due to operation or non-operation is not covered under warranty.  
7. All free service are at Dealer's service point only.  
8. Warranty ceases if service is not done periodically.  
9. The attached card should be completed and returned to Ratnagiri Impex Pvt. Ltd. for registration immediately after sale / delivery.  
10. The warranty is void unless you register the warranty card with Ratnagiri Impex Pvt. Ltd.  
11. The decision of Ratnagiri Impex Pvt. Ltd., in settling the warranty is final in all respects.  
12. All disputes are subject to Bangalore Courts Jurisdiction

1. LIMITED WARRANTY PERIOD : For a period of six months from the date of Sale / delivery of the product which ever is earlier. 2. LIMITED WARRANTY OBLIGATION : Replacement of defective part(s) by authorized dealer are free of charges. If found defective by reasons of defective material / poor workmanship, parts will be replaced and there will be no value re-imbursement. 3. TERMS & CONDITIONS : a. Claims under warranty will be accepted on submission of Warranty Card duly filled and stamped by authorized dealer together with the original purchase document. : b. Shipping / transportation / Incidental charges incurred in replacing defective parts under warranty shall be borne by the purchaser.  
WARRANTY null & void if  
(i) Lack of maintenance, (ii) Incorrect use of the machine or tampering, (iii) Use of non-genuine spare parts, (iv) Usage of acids, solvents, or any flammable materials, (v) Non-usage of filter water / clear water / soft water & using water above 40°C temperature, (vi) While using the pressure washers to draw water which is contaminated with dust & solvents (eg. paint thinners, gasoline, oil, etc.), (vii) Repair done by unauthorized service people, (viii) Those parts subject to wear & tear due to normal operations and plastic parts, rubber items etc, (ix) Loose connections, faulty electrical fixtures & fluctuations in power supply.  
4. Should any failure occur during or after the warranty period, customer does not have the right to interrupt payment / price discount.  
5. Incidental or consequential damages like inconvenience commercial loss, loss of tie, mental agony etc.  
6. Loss of any nature due to operation or non-operation is not covered under warranty.  
7. All free service are at Dealer's service point only.  
8. Warranty ceases if service is not done periodically.  
9. The attached card should be completed and returned to Ratnagiri Impex Pvt. Ltd. for registration immediately after sale / delivery.  
10. The warranty is void unless you register the warranty card with Ratnagiri Impex Pvt. Ltd.  
11. The decision of Ratnagiri Impex Pvt. Ltd., in settling the warranty is final in all respects.  
12. All disputes are subject to Bangalore Courts Jurisdiction

**FREE SERVICE COUPON (30DAYS/30HRS. WHICHEVER IS EARLIER)**

MODEL

SERIAL NUMBER

PDI DATE

SERVICE NO.

PURCHASE BILL NO.

DATE





DEALERS OFFICE SEAL

1. Check and test the fuel mixture
3. Check , clean and adjust the spark plug
5. Check and sparken the cutting tools
7. Start and check the noise, vibration, loosen etc..

OPERATIONS

2. check and clean the air filter
4. Check and adjust the carburetor tuning
6. Product familiarisation on usage
8. Routine maintenance and shortage.

**FREE SERVICE COUPON (30DAYS/30HRS. WHICHEVER IS EARLIER)**

MODEL

SERIAL NUMBER

PDI DATE

SERVICE NO.

PURCHASE BILL NO.

DATE





DEALERS OFFICE SEAL

1. Check and test the fuel mixture
3. Check , clean and adjust the spark plug
5. Check and sparken the cutting tools
7. Start and check the noise, vibration, loosen etc..

OPERATIONS

2. check and clean the air filter
4. Check and adjust the carburetor tuning
6. Product familiarisation on usage
8. Routine maintenance and shortage.

**FREE SERVICE COUPON (30DAYS/30HRS. WHICHEVER IS EARLIER)**

MODEL

SERIAL NUMBER

PDI DATE

SERVICE NO.

PURCHASE BILL NO.

DATE





DEALERS OFFICE SEAL

1. Check and test the fuel mixture
3. Check , clean and adjust the spark plug
5. Check and sparken the cutting tools
7. Start and check the noise, vibration, loosen etc..

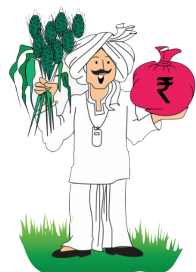
OPERATIONS

2. check and clean the air filter
4. Check and adjust the carburetor tuning
6. Product familiarisation on usage
8. Routine maintenance and shortage.

# DOS & DONTs

1. Always read the instruction manual supplied along with the equipments and understand the correct installation and operating procedures before attempting to use the equipments.
2. It is important to use the personal protection equipments such as head helmet with visor, ear defenders, goggles, safety gloves, cut resistant shoes, trousers and jackets while operating potentially dangerous machines
3. Avoid untrained persons using the equipments. Children must not be allowed to handle these equipments
4. Always use genuine spares and accessories in repairs and usage to derive maximum life of the equipments.
5. Always keep the equipments in good working condition to minimize loss of output as well as to reduce the pollution and save the environment
6. Do not use the machine within range of persons unless they wear protective clothing
7. Do not operate the machine when fatigued or under the influence of alcohol or drugs
8. When the machine is running, please maintain a constant water supply. Without water circulation will damage the sealing rings of the machine.
9. For more query kindly contact for our Service Center/Dealer/ franchise

## AGRIMATE MULTI PURPOSE EQUIPMENT ANYWHERE - ANYTIME - ANY CROP



**ratnagiri<sup>®</sup>  
impex**  
BRINGING YOU THE FUTURE... NOW

IMPORTED & MARKETING BY,  
**RATNAGIRI IMPEX PVT., LTD.,**  
Annapurna House, #1 / 1G, 7th Cross, New  
Guddadahalli Mysore Road, Bangalore - 560 026  
Missed Call : 7393 938 938 Email: [ask@agrimart.in](mailto:ask@agrimart.in)