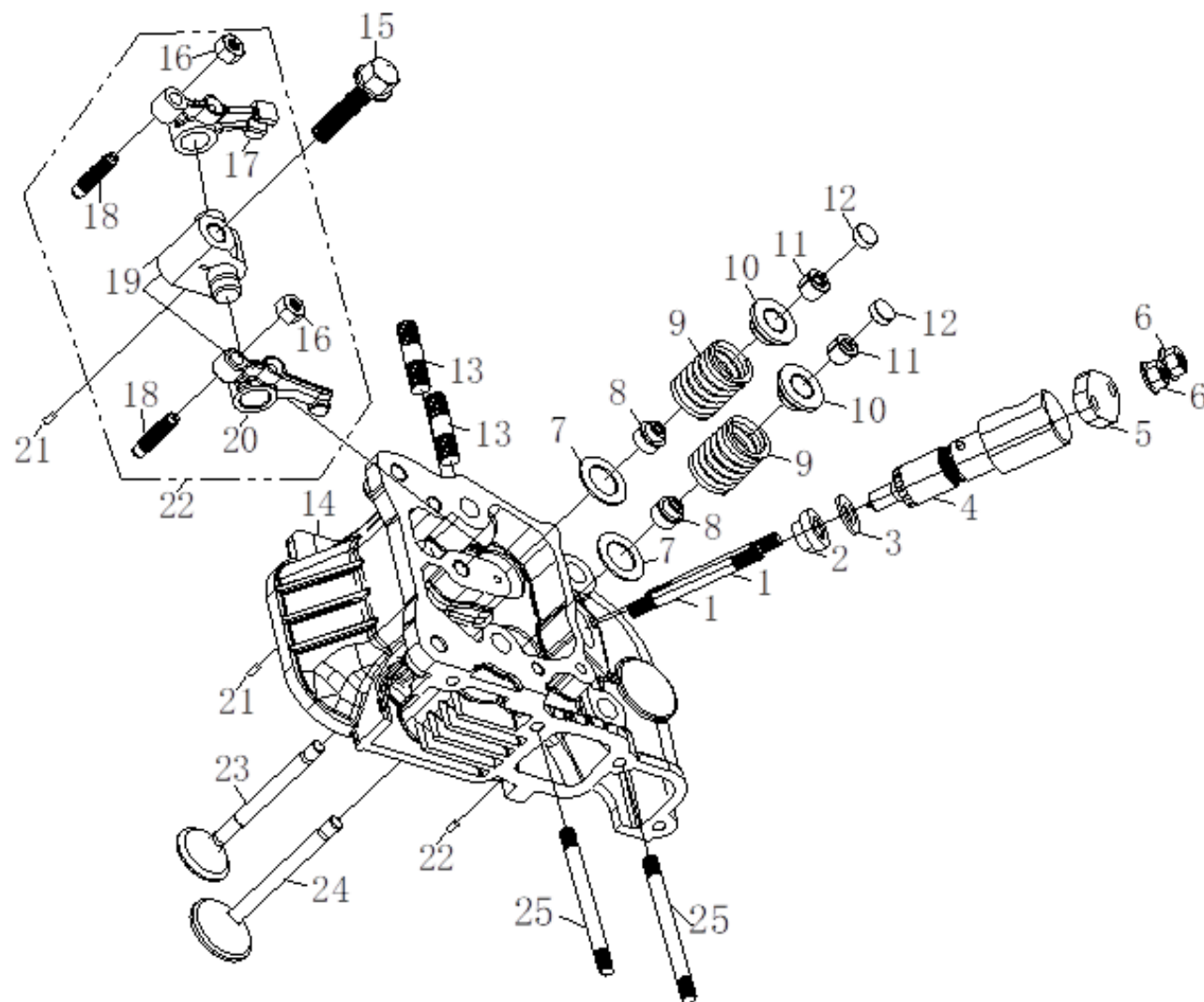


## INTERCULTIVATOR/POWER WEEDER ENGINE DIAGRAM AM-MPT-1100-6D WC SERIES



# DIAGRAM & SPARE PARTS LIST OF AM-MPT-1100-6D

## CYLINDER HEAD ASSY -A

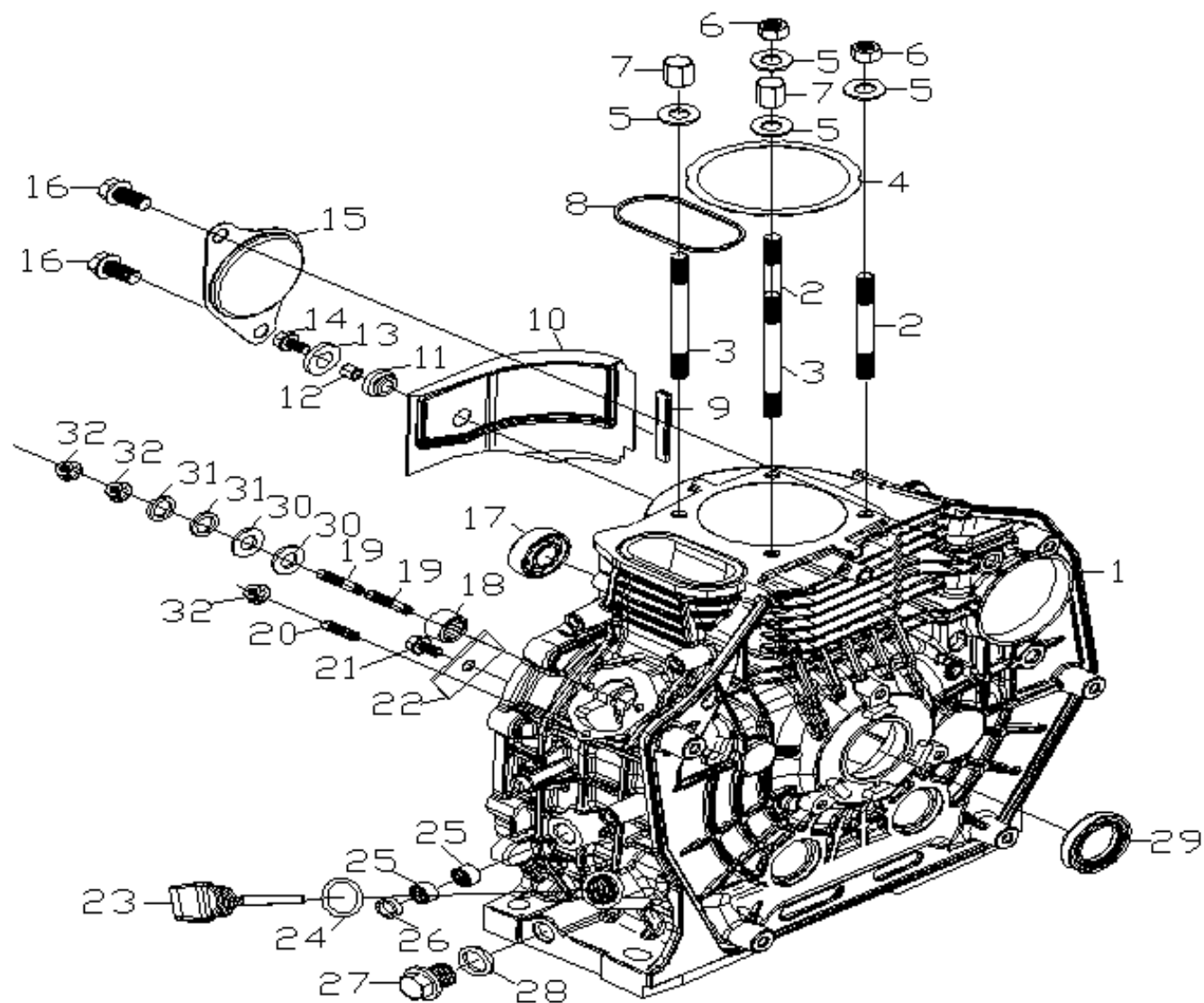


## DIAGRAM & SPARE PARTS LIST OF AM-MPT-1100-6D

SL NO	PART NUMBER	DESCRPTION	SL NO	PART NUMBER	DESCRPTION
1	AM-178FD-A01	Bolt Stud,	17	AM-178FD-A17	Valve Exhaust Arm
2	AM-178FD-A02	Adjusting Gasket Cover	18	AM-178FD-A18	Valve Screw
3	AM-178FD-A03	Adjusting Gasket	19	AM-178FD-A19	Arm Base
4	AM-178FD-A04	Fuel Injection Assy	20	AM-178FD-A20	Valve Inlet Arm
5	AM-178FD-A05	Fuel Injection Clamp	21	AM-178FD-A21	Pin
6	AM-178FD-A06	Flange Nut	22	AM-178FD-A22	Arm Assy
7	AM-178FD-A07	Valve Spring Washer	23	AM-178FD-A23	Valve Exhaust
8	AM-178FD-A08	Valve Seal	24	AM-178FD-A24	Valve Inlet
9	AM-178FD-A09	Spring Valve	25	AM-178FD-A25	Bolt Stud
10	AM-178FD-A10	Rock Arm Assy			
11	AM-178FD-A11	Cotter			
12	AM-178FD-A12	Valve Adjusting Plate			
13	AM-178FD-A13	Bolt stud			
14	AM-178FD-A14	Cylinder Head Assy			
15	AM-178FD-A15	Flange Bolt			
16	AM-178FD-A16	Lock Nut			

# DIAGRAM & SPARE PARTS LIST OF AM-MPT-1100-6D

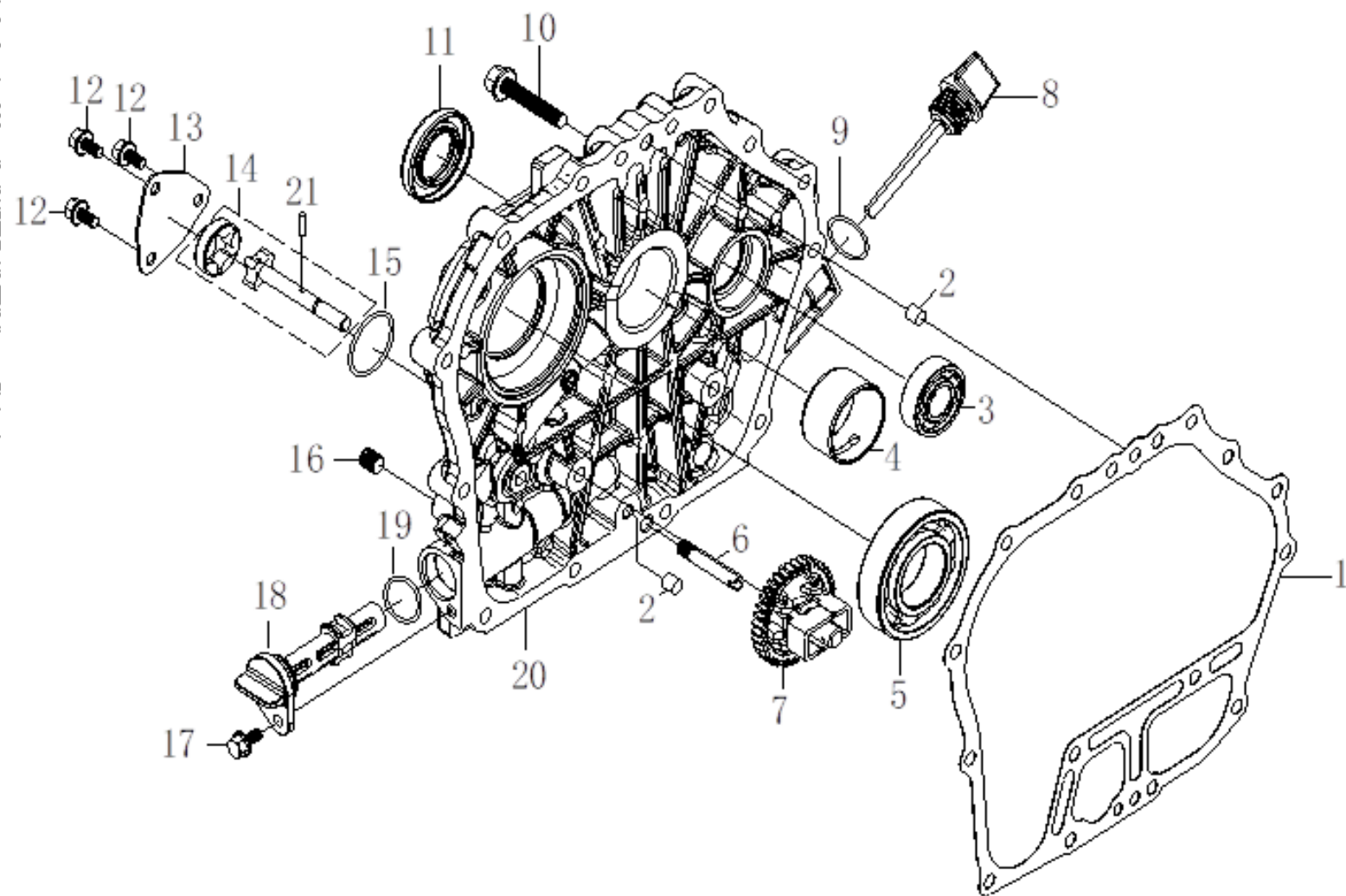
## CRANKCASE ASSY- B



## DIAGRAM & SPARE PARTS LIST OF AM-MPT-1100-6D

SL NO	PART NUMBER	DESCRPTION	SL NO	PART NUMBER	DESCRPTION
1	AM-178FD-B01	Crankcase Comp	17	AM-178FD-B17	Ball Bearing
2	AM-178FD-B02	Cylinder Head StudM	18	AM-178FD-B18	Needle Bearing
3	AM-178FD-B03	Cylinder Head Stud	19	AM-178FD-B19	Bolt Stud
4	AM-178FD-B04	Cylinder Head Shim	20	AM-178FD-B20	Bolt Stud
5	AM-178FD-B05	Washer	21	AM-178FD-B21	Bolt
6	AM-178FD-B06	Cylinder Head Nut	22	AM-178FD-B22	Retainer
7	AM-178FD-B07	Cylinder Head Nut Thick	23	AM-178FD-B23	Oil Filler Gap
8	AM-178FD-B08	Rectangle Seal Ring	24	AM-178FD-B24	O-Ring
9	AM-178FD-B09	Wind Guide Plate Cushion	25	AM-178FD-B25	Needle Bearing
10	AM-178FD-B10	Wind Guide Plate	26	AM-178FD-B26	Oil Seal
11	AM-178FD-B11	Vibration Isolation Cushion Block	27	AM-178FD-B27	Drain Plug
12	AM-178FD-B12	Lining	28	AM-178FD-B28	Oil Plug Seal
13	AM-178FD-B13	Washer	29	AM-178FD-B29	Oil Seal
14	AM-178FD-B14	Flange Bolt	30	AM-178FD-B30	Washer
15	AM-178FD-B15	Starter Seat Cover	31	AM-178FD-B31	Spring Washer
16	AM-178FD-B16	Flange Bolt	32	AM-178FD-B32	Flange Bolt

## CRANKCASE COVER ASSY - C

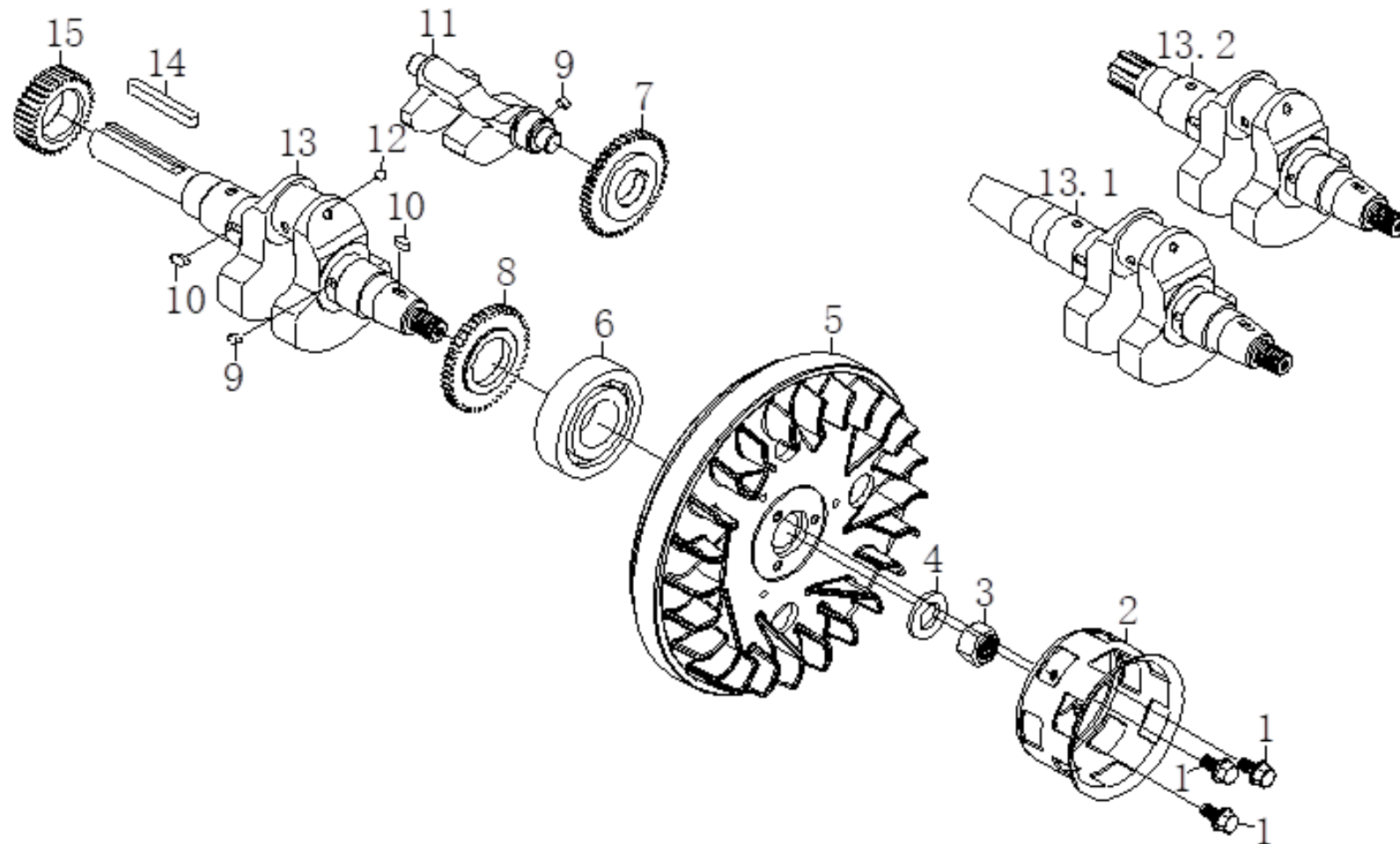


## DIAGRAM & SPARE PARTS LIST OF AM-MPT-1100-6D

SL NO	PART NUMBER	DESCRPTION	SL NO	PART NUMBER	DESCRIPTION
1	AM-178FD-C01	Gasket Case Cover	17	AM-178FD-C17	Flange Bolt
2	AM-178FD-C02	Pin	18	AM-178FD-C18	Engine Oil Filter Element
3	AM-178FD-C03	Bearing	19	AM-178FD-C19	Seal Ring
4	AM-178FD-C04	Main Bearing	20	AM-178FD-C20	Crankcase Cover
5	AM-178FD-C05	Ball Bearing	21	AM-178FD-C21	Pin
6	AM-178FD-C06	Oil Indicator			
7	AM-178FD-C07	Governor Kit Comp			
8	AM-178FD-C08	Dipstick			
9	AM-178FD-C09	Cover, Crakcase			
10	AM-178FD-C10	Flange Bolt			
11	AM-178FD-C11	Oil Seal			
12	AM-178FD-C12	Flange Bolt			
13	AM-178FD-C13	Oil Pump Cover			
14	AM-178FD-C14	Oil Pump Assy			
15	AM-178FD-C15	Sealing Ring			
16	AM-178FD-C16	Block Bolt			

# DIAGRAM & SPARE PARTS LIST OF AM-MPT-1100-6D

## CRANK-FLY WHEEL ASSY - D



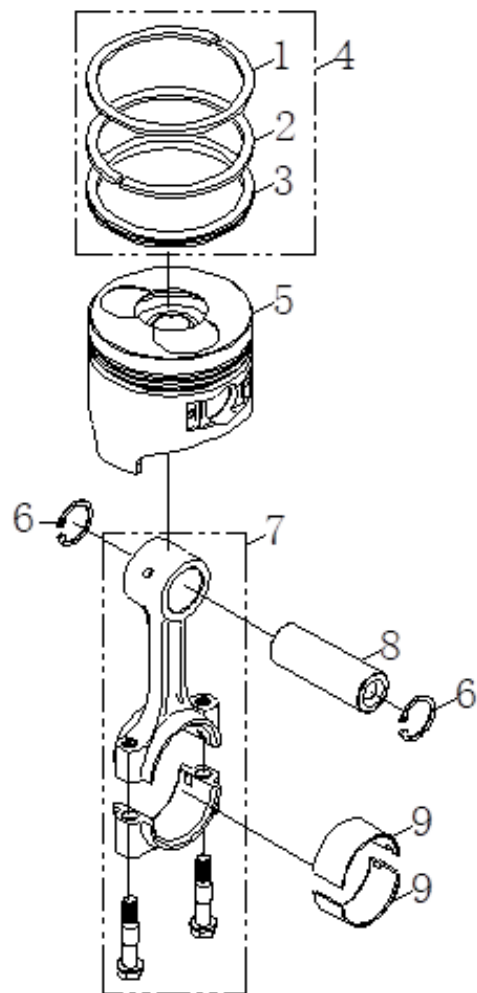


## DIAGRAM & SPARE PARTS LIST OF AM-MPT-1100-6D

SL NO	PART NUMBER	DESCRPTION	SL NO	PART NUMBER	DESCRPTION
1	AM-178FD-D01	Flange Bolt			
2	AM-178FD-D02	Starter Pulley			
3	AM-178FD-D03	Flange Nut			
4	AM-178FD-D04	Washer			
5	AM-178FD-D05	Fly Wheel			
6	AM-178FD-D06	Ball Bearing			
7	AM-178FD-D07	Timing Gear Of Balance Shaft			
8	AM-178FD-D08	Drive Gear Of Balance Shsft			
9	AM-178FD-D09	Key			
10	AM-178FD-D10	Key			
11	AM-178FD-D11	Balancer Shaft			
12	AM-178FD-D12	Steel Ball			
13	AM-178FD-D13	Crank Shaft Assy			
13.1	AM-178FD-D13.1	Crank Shaft Assy			
13.2	AM-178FD-D13.2	Crank Shaft Assy			
14	AM-178FD-D14	key			
15	AM-178FD-D15	Crankshaft Timing Gear			

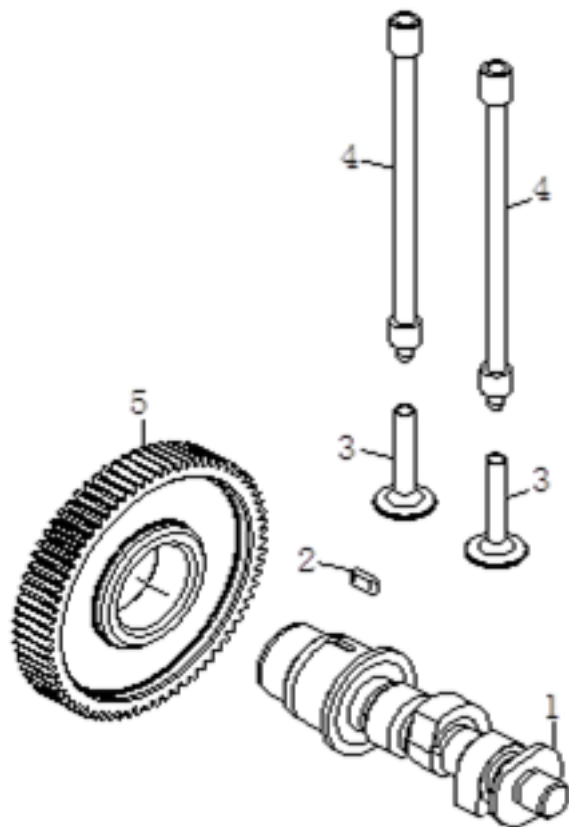
## DIAGRAM & SPARE PARTS LIST OF AM-MPT-1100-6D

## PISTON-CONNECTING ROD ASSY - E

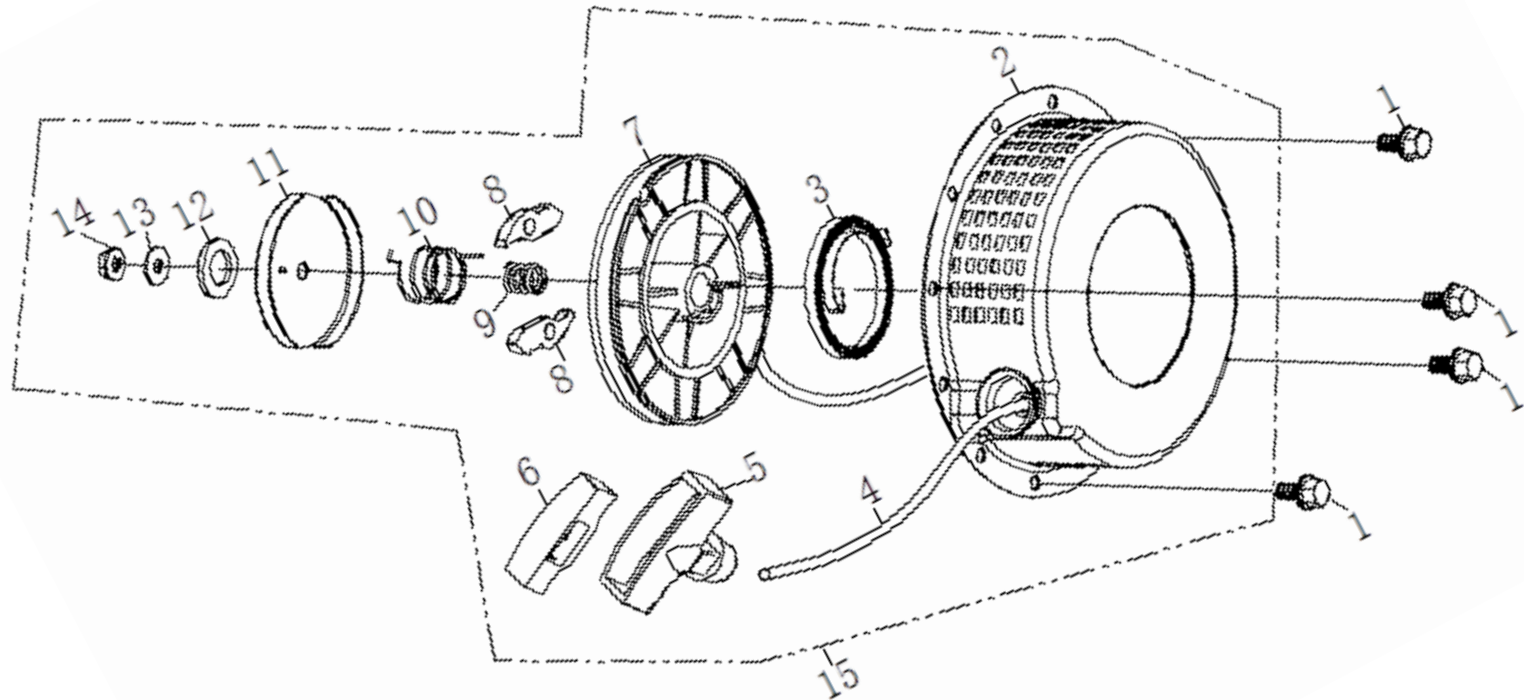
[illegible]

## DIAGRAM & SPARE PARTS LIST OF AM-MPT-1100-6D

## CAMSHAFT ASSY - F

[illegible]

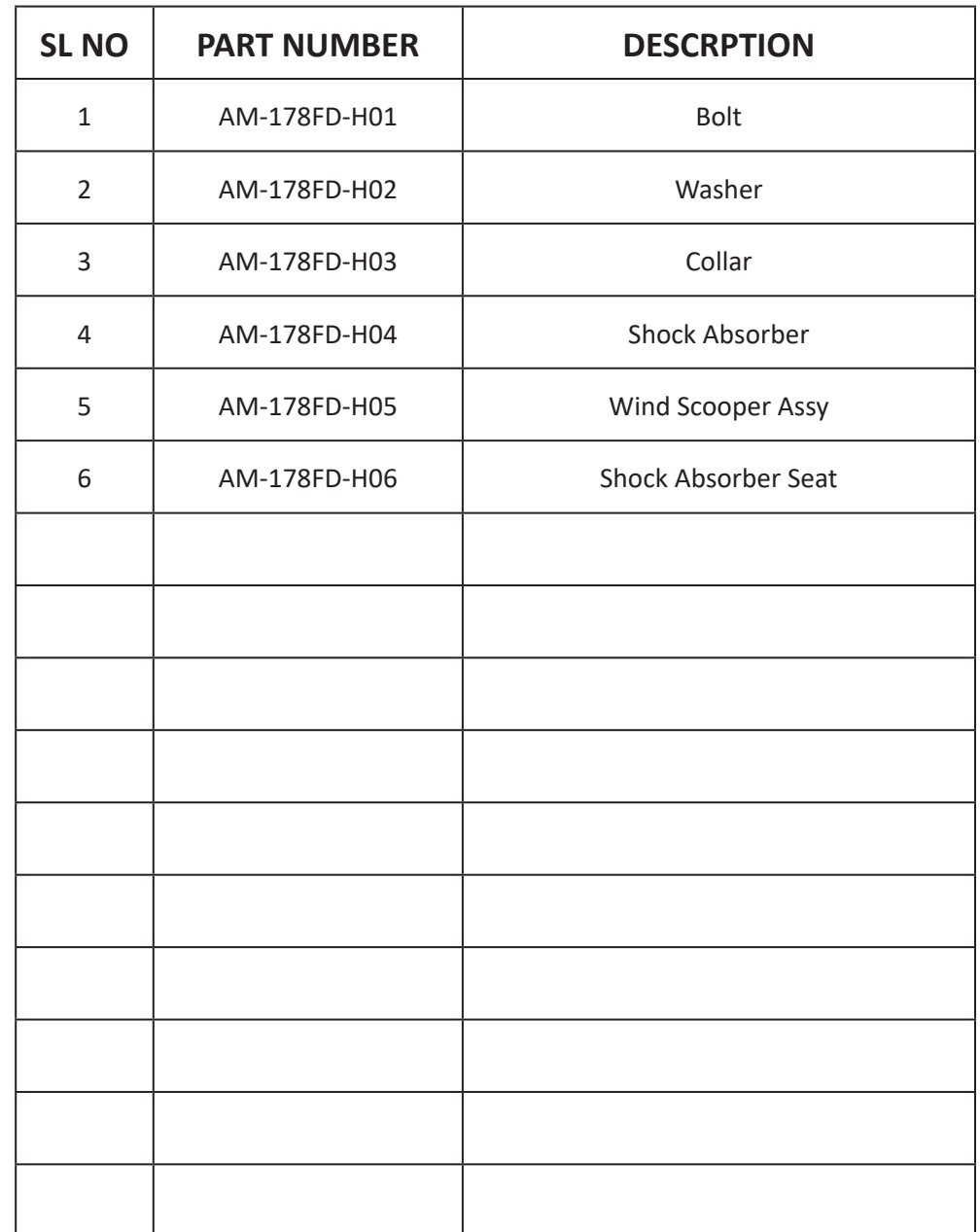
START COVER ASSY - G



## DIAGRAM & SPARE PARTS LIST OF AM-MPT-1100-6D

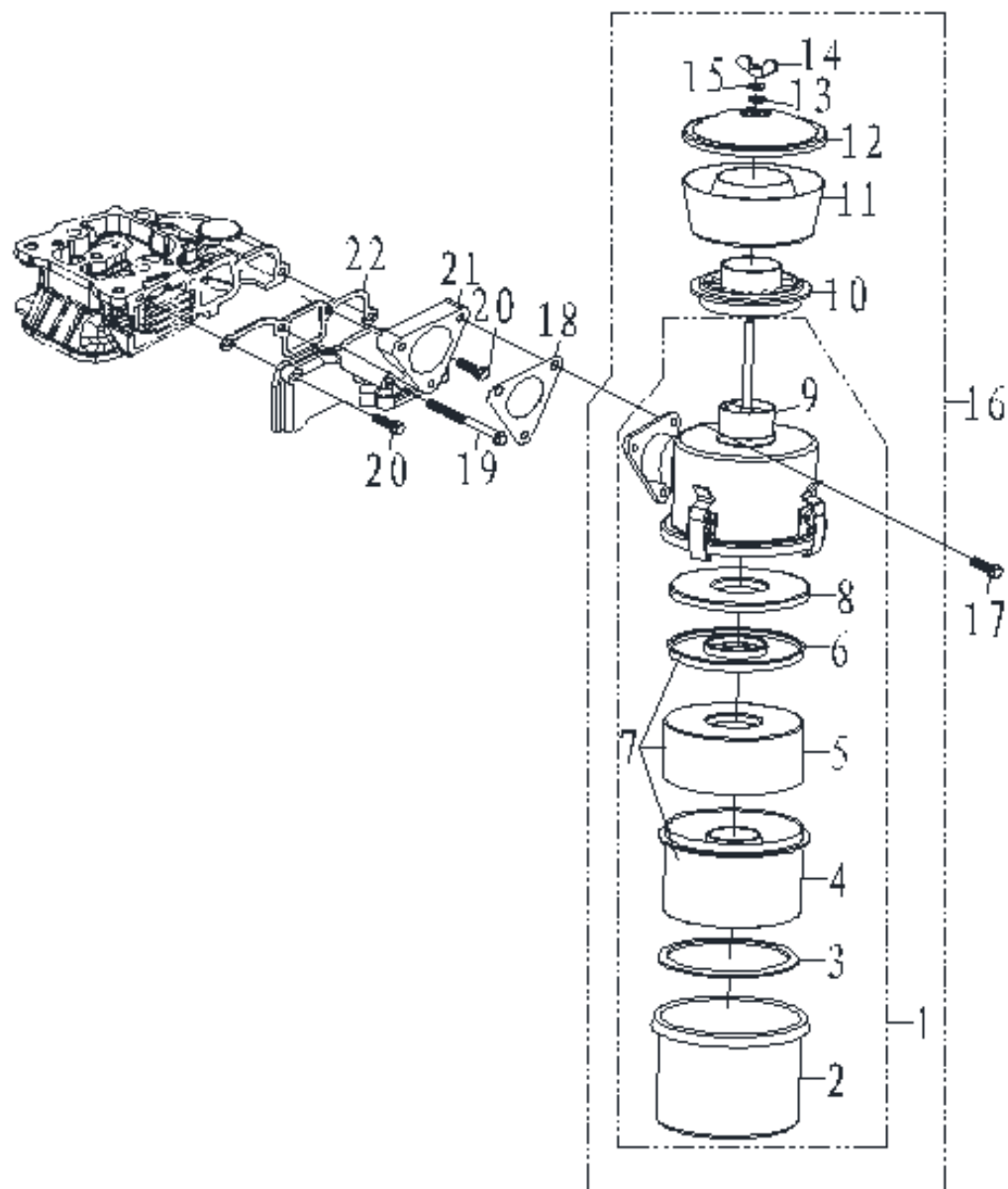
SL NO	PART NUMBER	DESCRIPTION	SL NO	PART NUMBER	DESCRIPTION
1	AM-178FD-G01	Flange Bolt			
2	AM-178FD-G02	Stater Cover Comp Recoil			
3	AM-178FD-G03	Spiral Spring			
4	AM-178FD-G04	Rope Recoil Starter			
5	AM-178FD-G05	Handle Starter			
6	AM-178FD-G06	Cover Handle Starter			
7	AM-178FD-G07	Starter Reel			
8	AM-178FD-G08	Ratchet Starter			
9	AM-178FD-G09	Compress Spring			
10	AM-178FD-G10	Spring Return			
11	AM-178FD-G11	Spring Cover			
12	AM-178FD-G12	Rubber Washer			
13	AM-178FD-G13	Washer			
14	AM-178FD-G14	Nut			
15	AM-178FD-G15	Handle Starter			

## WIND SCOOPER ASSY - H



# DIAGRAM & SPARE PARTS LIST OF AM-MPT-1100-6D

## AIR FILTER ASSY - J



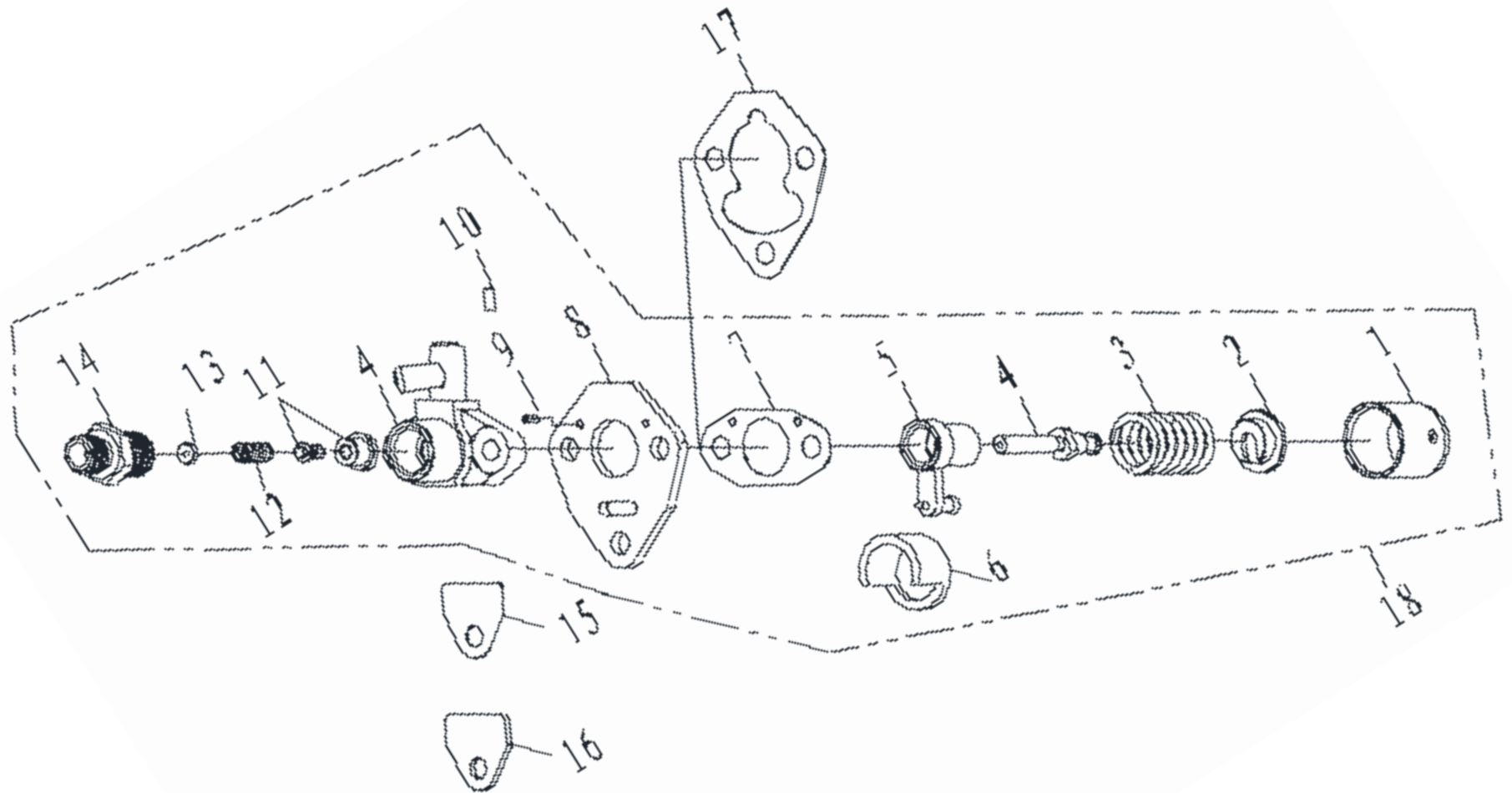
## DIAGRAM & SPARE PARTS LIST OF AM-MPT-1100-6D

SL NO	PART NUMBER	DESCRPTION	SL NO	PART NUMBER	DESCRPTION
1	AM-178FD-J01	Cyclone Air Cleaner	17	AM-178FD-J17	Flange Bolt
2	AM-178FD-J02	Air Flter Sump	18	AM-178FD-J18	Air Cleaner Gasket
3	AM-178FD-J03	Sealing Ring	19	AM-178FD-J19	Flange Bolt
4	AM-178FD-J04	Filter Case	20	AM-178FD-J20	Flange Bolt
5	AM-178FD-J05	Steel Wire Filter	21	AM-178FD-J21	Intake Pipe
6	AM-178FD-J06	Filter Case,Cover	22	AM-178FD-J22	Intake Pipe Gasket
7	AM-178FD-J07	Filter Assy			
8	AM-178FD-J08	Foam Filter			
9	AM-178FD-J09	Air Filter Connecting Disc			
10	AM-178FD-J10	Air Cleaner Blade Base			
11	AM-178FD-J11	Air Cleaner Detached Body			
12	AM-178FD-J12	Cyclone,Filter Cover			
13	AM-178FD-J13	Spring Washer			
14	AM-178FD-J14	Butterfly Nut			
15	AM-178FD-J15	Washer			
16	AM-178FD-J16	Air Cleaner Assy			



# DIAGRAM & SPARE PARTS LIST OF AM-MPT-1100-6D

## FUEL PUMP ASSY - K

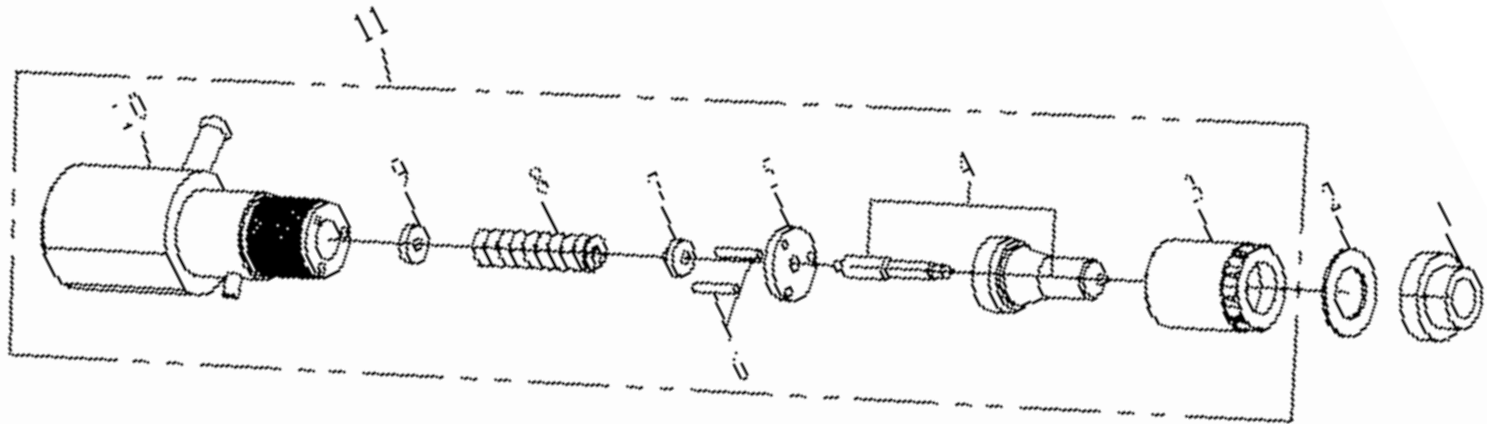


## DIAGRAM & SPARE PARTS LIST OF AM-MPT-1100-6D

SL NO	PART NO	DESCRIPTION	SL NO	PART NO	DESCRIPTION
1	AM-178FD-K01	Tappet	17	AM-178FD-K17	Fuel Pump Gasket
2	AM-178FD-K02	Spring Holder	18	AM-178FD-K18	Fuel Pump Cover
3	AM-178FD-K03	Spring			
4	AM-178FD-K04	Plunger			
5	AM-178FD-K05	Fuel Limiting Sheath Weldmenl Assy			
6	AM-178FD-K06	Support			
7	AM-178FD-K07	Fuel Pump Gasket			
8	AM-178FD-K08	Washer			
9	AM-178FD-K09	Fip Connecting Plate			
10	AM-178FD-K10	Pin			
11	AM-178FD-K11	Oil outlet parts			
12	AM-178FD-K12	Fuel Delivery Valve Core			
13	AM-178FD-K13	Fuel Delivery Valve Seat			
14	AM-178FD-K14	Fuel Delhrery Valve Spring			
15	AM-178FD-K15	Fuel Delhrery Washer			
16	AM-178FD-K16	Fuel Delvery Valve Forcing Holder			

# DIAGRAM & SPARE PARTS LIST OF AM-MPT-1100-6D

## FUEL INJECTION ASSY - M

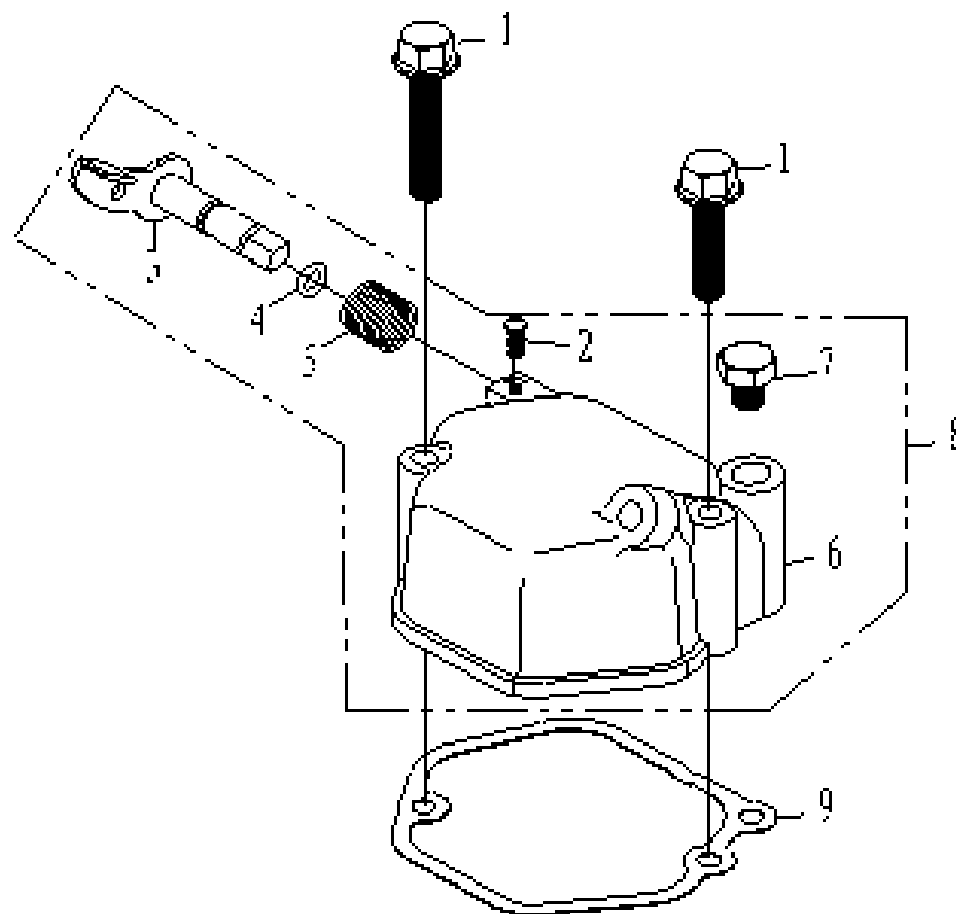


# DIAGRAM & SPARE PARTS LIST OF AM-MPT-1100-6D

[illegible]

# DIAGRAM & SPARE PARTS LIST OF AM-MPT-1100-6D

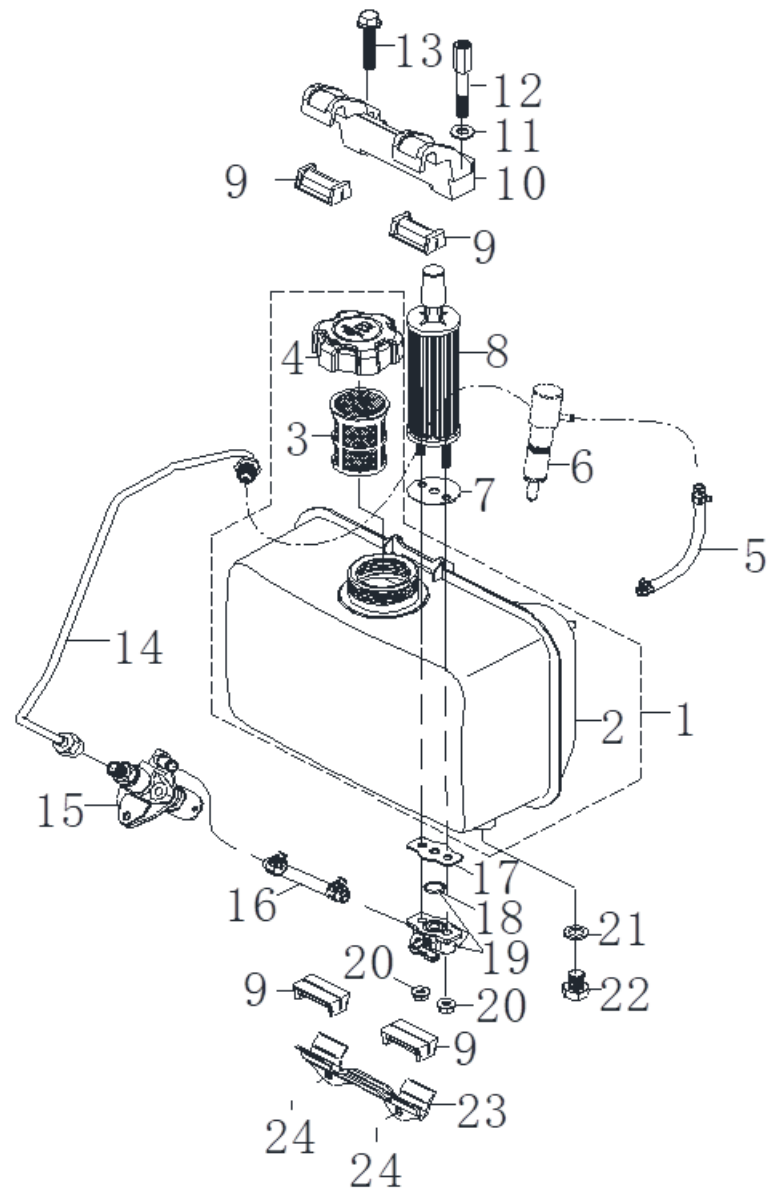
## BONNET ASSY - N



[illegible]

# DIAGRAM & SPARE PARTS LIST OF AM-MPT-1100-6D

## FULE OIL ASSY - P



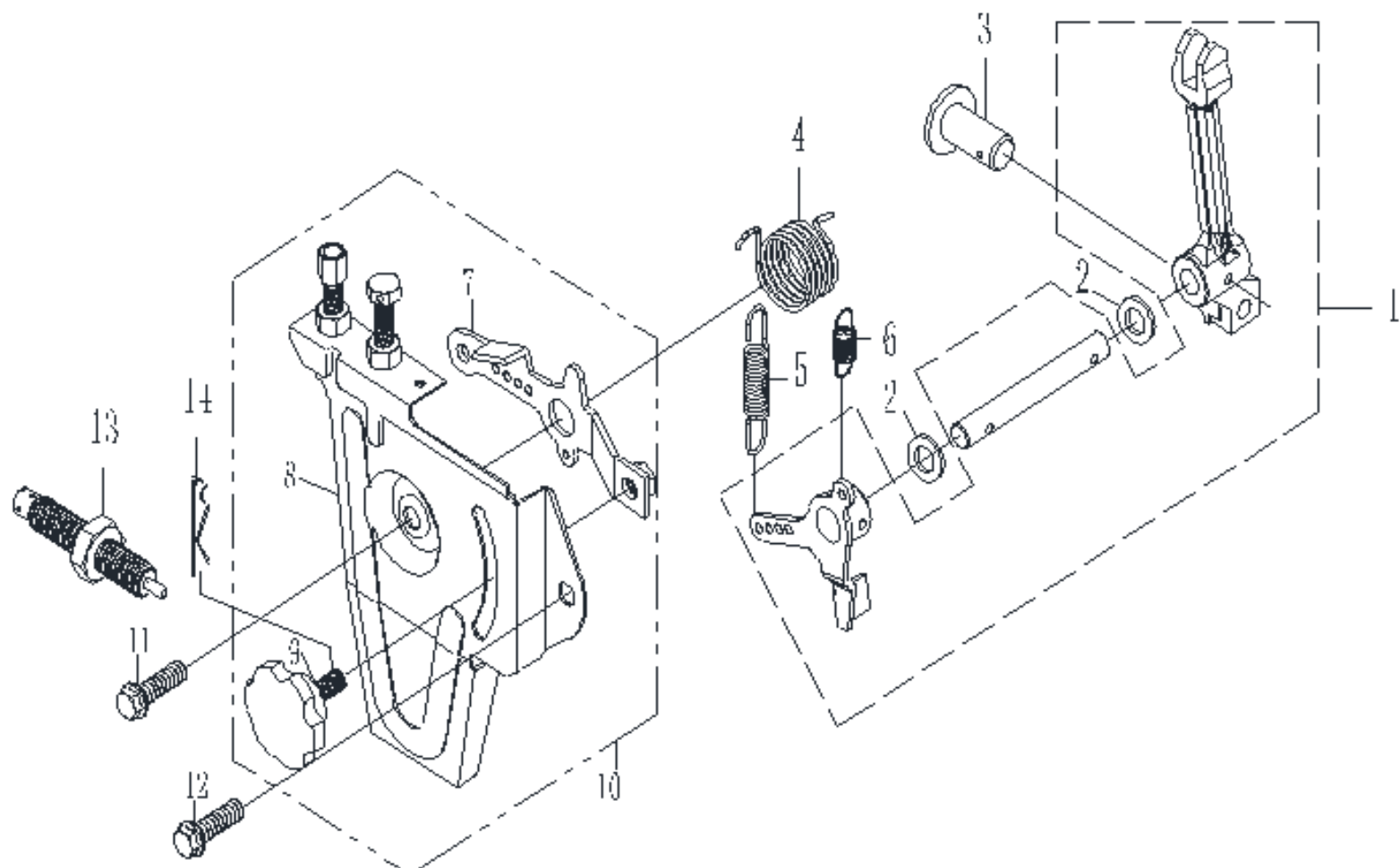
## DIAGRAM & SPARE PARTS LIST OF AM-MPT-1100-6D

SL NO	PART NUMBER	DESCRPTION	SL NO	PART NUMBER	DESCRIPTION
1	AM-178FD-P01	Fuel Tank Assy	17	AM-178FD-P17	Fuel tank switch gasket
2	AM-178FD-P02	Fuel Tank Assy	18	AM-178FD-P18	O-shaped rubber sealing ring
3	AM-178FD-P03	Oil filler filter combination	19	AM-178FD-P19	
4	AM-178FD-P04	Fuel tank cap combination	20	AM-178FD-P20	Flange Bolt
5	AM-178FD-P05	Fuel pipe assembly	21	AM-178FD-P21	Fuel Tank Plug Seat
6	AM-178FD-P06	Fuel Return Pipe	22	AM-178FD-P22	Bolt
7	AM-178FD-P07	Fuel Iniection Assy	23	AM-178FD-P23	Lower Stay Assy
8	AM-178FD-P08	Fuel filter assembly	24	AM-178FD-P24	Flange Nut
9	AM-178FD-P09	Fuel Tank Damper			
10	AM-178FD-P10	Upper Stay			
11	AM-178FD-P11	Upper Stay			
12	AM-178FD-P12	Upper Stay Bolt			
13	AM-178FD-P13	Bolt			
14	AM-178FD-P14	Fuel Injection Pipe Assy			
15	AM-178FD-P15	Oil Pump Assy			
16	AM-178FD-P16	Oil Pipe			



# DIAGRAM & SPARE PARTS LIST OF AM-MPT-1100-6D

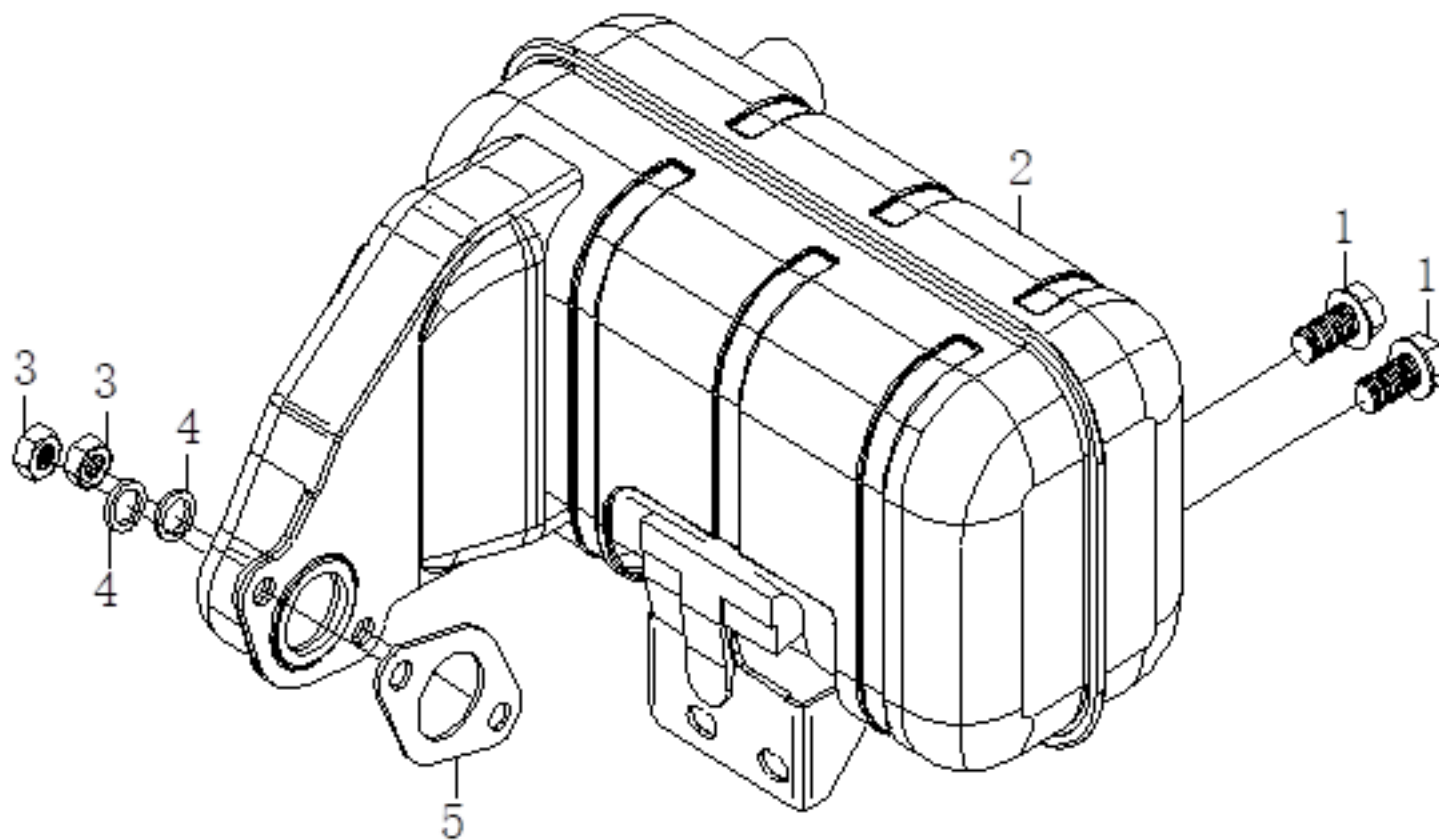
## THROTTLE CONTROL ASSY - R



## DIAGRAM & SPARE PARTS LIST OF AM-MPT-1100-6D

SL NO	PART NUMBER	DESCRIPTION	SL NO	PART NUMBER	DESCRIPTION
1	AM-178FD-R01	Lever Fork			
2	AM-178FD-R02	Fork shaft adjusting washer			
3	AM-178FD-R03	speed control cap			
4	AM-178FD-R04	Reset Spring			
5	AM-178FD-R05	Governor Spring			
6	AM-178FD-R06	Fine Tuning Spring			
7	AM-178FD-R07	Speed control arm			
8	AM-178FD-R08	Speed control panel			
9	AM-178FD-R09	Control Panel			
10	AM-178FD-R10	Control Panel			
11	AM-178FD-R11	Flange Bolt			
12	AM-178FD-R12	Flange Bolt			
13	AM-178FD-R13	Control Lever Assy			
14	AM-178FD-R14	Adjusting Rod Clip			

EXHAUST ASSY -S



## DIAGRAM & SPARE PARTS LIST OF AM-MPT-1100-6D

[illegible]

## INSPECTION & MAINTAINANCE

For safety use, make sure the machine is cleaned every three months. Before working, make sure to inspect the filter and the nozzle and ensure there is no impurity. After working, make sure there is no water in the pump and the hose.

If the machine needs to be repaired in the guarantee period, please return the machine to the shop. You need to provide the certificate of purchase on order to repair or get the substitute.

Before packing, the machine should be cleaned, then use closed packaging, packaging should be firm. Store the machine in dry place.

For transportation safety. The machine should comply with ISTA.

Do not dispose of electrical machines as unsorted municipal waste, use separate collection facilities.

If electrical machines are disposed of in landfills or dumps, hazardous substances can leak into the ground water and get into the food chain, damaging your health and well being.

When replacing old machines with new ones, the retailer is legally obligated to take back your old machine for disposals at least free of charge.

# WARRANTY CARD

## CUSTOMER COPY

DATE _____	DATE OF DELIVERY _____	DEALERS OFFICIAL SEAL _____	DEALERS SIGN _____
PURCHASERS NAME & ADDRESS _____ _____ _____	<div>CUSTOMER SIGN</div>	<div></div>	
PRODUCT NAME	PRODUCT SERIAL NO.	INVOICE/DN NO.	
<div></div>	<div></div>	<div></div>	
I/Will accept the terms and conditions of warranty as in the warranty card			

## DEALERS COPY

DATE _____	DATE OF DELIVERY _____	DEALERS OFFICIAL SEAL _____	DEALERS SIGN _____
PURCHASERS NAME & ADDRESS _____ _____ _____	<div>CUSTOMER SIGN</div>	<div></div>	
PRODUCT NAME	PRODUCT SERIAL NO.	INVOICE/DN NO.	
<div></div>	<div></div>	<div></div>	
I/Will accept the terms and conditions of warranty as in the warranty card			

## COMPANY COPY

DATE _____	DATE OF DELIVERY _____	DEALERS OFFICIAL SEAL _____	DEALERS SIGN _____
PURCHASERS NAME & ADDRESS _____ _____ _____	<div>CUSTOMER SIGN</div>	<div></div>	
PRODUCT NAME	PRODUCT SERIAL NO.	INVOICE/DN NO.	
<div></div>	<div></div>	<div></div>	
I/Will accept the terms and conditions of warranty as in the warranty card			

1. LIMITED WARRANTY PERIOD : For a period of six months from the date of Sale / delivery of the product which ever is earlier. 2. LIMITED WARRANTY OBLIGATION : Replacement of defective part(s) by authorized dealer are free of charges. If found defective by reasons of defective material / poor workmanship, parts will be replaced and there will be no value re-imbursement. 3. TERMS & CONDITIONS : a. Claims under warranty will be accepted on submission of Warranty Card duly filled and stamped by authorized dealer together with the original purchase document. : b. Shipping / transportation / Incidental charges incurred in replacing defective parts under warranty shall be borne by the purchaser

WARRANTY null & void if  
(i) Lack of maintenance, (ii) Incorrect use of the machine or tampering, (iii) Use of non-genuine spare parts, (iv) Usage of acids, solvents, or any flammable materials, (v) Non-usage of filter water / clear water / soft water & using water above 40°C temperature, (vi) While using the pressure washers to draw water which is contaminated with dust & solvents (eg. paint thinners, gasoline, oil, etc.), (vii) Repair done by unauthorized service people, (viii) Those parts subject to wear & tear due to normal operations and plastic parts, rubber items etc, (ix) Loose connections, faulty electrical fixtures & fluctuations in power supply.  
4. Should any failure occur during or after the warranty period, customer does not have the right to interrupt payment / price discount.  
5. Incidental or consequential damages like inconvenience commercial loss, loss of tie, mental agony etc.  
6. Loss of any nature due to operation or non-operation is not covered under warranty.  
7. All free service are at Dealer's service point only.  
8. Warranty ceases if service is not done periodically.  
9. The attached card should be completed and returned to Ratnagiri Impex Pvt. Ltd. for registration immediately after sale / delivery.  
10. The warranty is void unless you register the warranty card with Ratnagiri Impex Pvt. Ltd.  
11. The decision of Ratnagiri Impex Pvt. Ltd., in settling the warranty is final in all respects.  
12. All disputes are subject to Bangalore Courts Jurisdiction

1. LIMITED WARRANTY PERIOD : For a period of six months from the date of Sale / delivery of the product which ever is earlier. 2. LIMITED WARRANTY OBLIGATION : Replacement of defective part(s) by authorized dealer are free of charges. If found defective by reasons of defective material / poor workmanship, parts will be replaced and there will be no value re-imbursement. 3. TERMS & CONDITIONS : a. Claims under warranty will be accepted on submission of Warranty Card duly filled and stamped by authorized dealer together with the original purchase document. : b. Shipping / transportation / Incidental charges incurred in replacing defective parts under warranty shall be borne by the purchaser.  
WARRANTY null & void if  
(i) Lack of maintenance, (ii) Incorrect use of the machine or tampering, (iii) Use of non-genuine spare parts, (iv) Usage of acids, solvents, or any flammable materials, (v) Non-usage of filter water / clear water / soft water & using water above 40°C temperature, (vi) While using the pressure washers to draw water which is contaminated with dust & solvents (eg. paint thinners, gasoline, oil, etc.), (vii) Repair done by unauthorized service people, (viii) Those parts subject to wear & tear due to normal operations and plastic parts, rubber items etc, (ix) Loose connections, faulty electrical fixtures & fluctuations in power supply.  
4. Should any failure occur during or after the warranty period, customer does not have the right to interrupt payment / price discount.  
5. Incidental or consequential damages like inconvenience commercial loss, loss of tie, mental agony etc.  
6. Loss of any nature due to operation or non-operation is not covered under warranty.  
7. All free service are at Dealer's service point only.  
8. Warranty ceases if service is not done periodically.  
9. The attached card should be completed and returned to Ratnagiri Impex Pvt. Ltd. for registration immediately after sale / delivery.  
10. The warranty is void unless you register the warranty card with Ratnagiri Impex Pvt. Ltd.  
11. The decision of Ratnagiri Impex Pvt. Ltd., in settling the warranty is final in all respects.  
12. All disputes are subject to Bangalore Courts Jurisdiction

1. LIMITED WARRANTY PERIOD : For a period of six months from the date of Sale / delivery of the product which ever is earlier. 2. LIMITED WARRANTY OBLIGATION : Replacement of defective part(s) by authorized dealer are free of charges. If found defective by reasons of defective material / poor workmanship, parts will be replaced and there will be no value re-imbursement. 3. TERMS & CONDITIONS : a. Claims under warranty will be accepted on submission of Warranty Card duly filled and stamped by authorized dealer together with the original purchase document. : b. Shipping / transportation / Incidental charges incurred in replacing defective parts under warranty shall be borne by the purchaser.  
WARRANTY null & void if  
(i) Lack of maintenance, (ii) Incorrect use of the machine or tampering, (iii) Use of non-genuine spare parts, (iv) Usage of acids, solvents, or any flammable materials, (v) Non-usage of filter water / clear water / soft water & using water above 40°C temperature, (vi) While using the pressure washers to draw water which is contaminated with dust & solvents (eg. paint thinners, gasoline, oil, etc.), (vii) Repair done by unauthorized service people, (viii) Those parts subject to wear & tear due to normal operations and plastic parts, rubber items etc, (ix) Loose connections, faulty electrical fixtures & fluctuations in power supply.  
4. Should any failure occur during or after the warranty period, customer does not have the right to interrupt payment / price discount.  
5. Incidental or consequential damages like inconvenience commercial loss, loss of tie, mental agony etc.  
6. Loss of any nature due to operation or non-operation is not covered under warranty.  
7. All free service are at Dealer's service point only.  
8. Warranty ceases if service is not done periodically.  
9. The attached card should be completed and returned to Ratnagiri Impex Pvt. Ltd. for registration immediately after sale / delivery.  
10. The warranty is void unless you register the warranty card with Ratnagiri Impex Pvt. Ltd.  
11. The decision of Ratnagiri Impex Pvt. Ltd., in settling the warranty is final in all respects.  
12. All disputes are subject to Bangalore Courts Jurisdiction

**FREE SERVICE COUPON (30DAYS/30HRS. WHICHEVER IS EARLIER)**

MODEL	<input type="text"/>	SERIAL NUMBER	<input type="text"/>
PDI DATE	SERVICE NO.	PURCHASE BILL NO.	DATE
<input type="text"/>	<input type="text"/>	<input type="text"/>	<input type="text"/>
DEALERS OFFICE SEAL	OPERATIONS		
<input type="text"/>	<div> 1. Check and test the fuel mixture  3. Check , clean and adjust the spark plug  5. Check and sparken the cutting tools  7. Start and check the noise, vibration, loosen etc.. </div> <div> 2. check and clean the air filter  4. Check and adjust the carburetor tuning  6. Product familiarisation on usage  8. Routine maintenance and shortage. </div>		

**FREE SERVICE COUPON (30DAYS/30HRS. WHICHEVER IS EARLIER)**

MODEL	<input type="text"/>	SERIAL NUMBER	<input type="text"/>
PDI DATE	SERVICE NO.	PURCHASE BILL NO.	DATE
<input type="text"/>	<input type="text"/>	<input type="text"/>	<input type="text"/>
DEALERS OFFICE SEAL	OPERATIONS		
<input type="text"/>	<div> 1. Check and test the fuel mixture  3. Check , clean and adjust the spark plug  5. Check and sparken the cutting tools  7. Start and check the noise, vibration, loosen etc.. </div> <div> 2. check and clean the air filter  4. Check and adjust the carburetor tuning  6. Product familiarisation on usage  8. Routine maintenance and shortage. </div>		

**FREE SERVICE COUPON (30DAYS/30HRS. WHICHEVER IS EARLIER)**

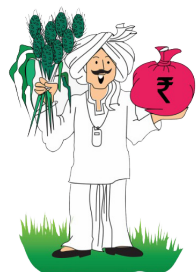
MODEL	<input type="text"/>	SERIAL NUMBER	<input type="text"/>
PDI DATE	SERVICE NO.	PURCHASE BILL NO.	DATE
<input type="text"/>	<input type="text"/>	<input type="text"/>	<input type="text"/>
DEALERS OFFICE SEAL	OPERATIONS		
<input type="text"/>	<div> 1. Check and test the fuel mixture  3. Check , clean and adjust the spark plug  5. Check and sparken the cutting tools  7. Start and check the noise, vibration, loosen etc.. </div> <div> 2. check and clean the air filter  4. Check and adjust the carburetor tuning  6. Product familiarisation on usage  8. Routine maintenance and shortage. </div>		



# DOS & DONTs

1. Always read the instruction manual supplied along with the equipments and understand the correct installation and operating procedures before attempting to use the equipments.
2. It is important to use the personal protection equipments such as head helmet with visor, ear defenders, goggles, safety gloves, cut resistant shoes, trousers and jackets while operating potentially dangerous machines
3. Avoid untrained persons using the equipments. Children must not be allowed to handle these equipments
4. Always use genuine spares and accessories in repairs and usage to derive maximum life of the equipments.
5. Always keep the equipments in good working condition to minimize loss of output as well as to reduce the pollution and save the environment
6. Do not use the machine within range of persons unless they wear protective clothing
7. Do not operate the machine when fatigued or under the influence of alcohol or drugs
8. When the machine is running, please maintain a constant water supply. Without water circulation will damage the sealing rings of the machine.
9. For more query kindly contact for our Service Center/Dealer/ franchise

## AGRIMATE MULTI PURPOSE EQUIPMENT ANYWHERE - ANYTIME - ANY CROP



**ratnagiri<sup>®</sup>  
impex**

BRINGING YOU THE FUTURE... NOW

IMPORTED & MARKETING BY,

**RATNAGIRI IMPEX PVT., LTD.,**

**Annapurna House, #1 / 1G, 7th Cross, New**

**Guddadahalli Mysore Road, Bangalore - 560 026**

**Missed Call : 7393 938 938 Email: [ask@agrimart.in](mailto:ask@agrimart.in)**