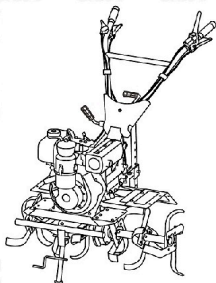


AM-MPT-1100-6D-ELITE INTERCULTIVATOR/POWER WEEDER



OPERATION AND MAINTENANCE MANUAL

BEFORE OPERATING THIS MACHINE, PLEASE READ THESE INSTRUCTIONS CAREFULLY

DISCLAIMER - DUE TO CONSTANT UPGRADATION, FEATURES AND SPECIFICATIONS ARE SUBJECT TO CHANGE WITHOUT NOTICE



Good Products – Great Values

Dear Sir/Madam,

Thank you for choosing Agrimate product. You are the proud owner of high technology and durable machine. Trust that our franchisee/dealer installed the product and explained you about the usage and service instructions. Please visit our authorised dealer for your future requirement of our other equipments, genuine spares, accessories and service. Service coupons are attached with this manual and you can avail free service to keep your machine fit always to use on demand.

About Ratnagiri

We import and market of high quality of agriculture wide range of equipment's Which we are selling through our authorized franchisee or dealer network. We are in this field from past 20 years serving the former community. For further details, you may please visit our website www.agrimart.in, Tool Free No: 1800-425-3036.

Range of Brands



Our Retail Formats



Agriculture | Horticulture | Sericulture | Plantations | Forestry | Garden | Health care

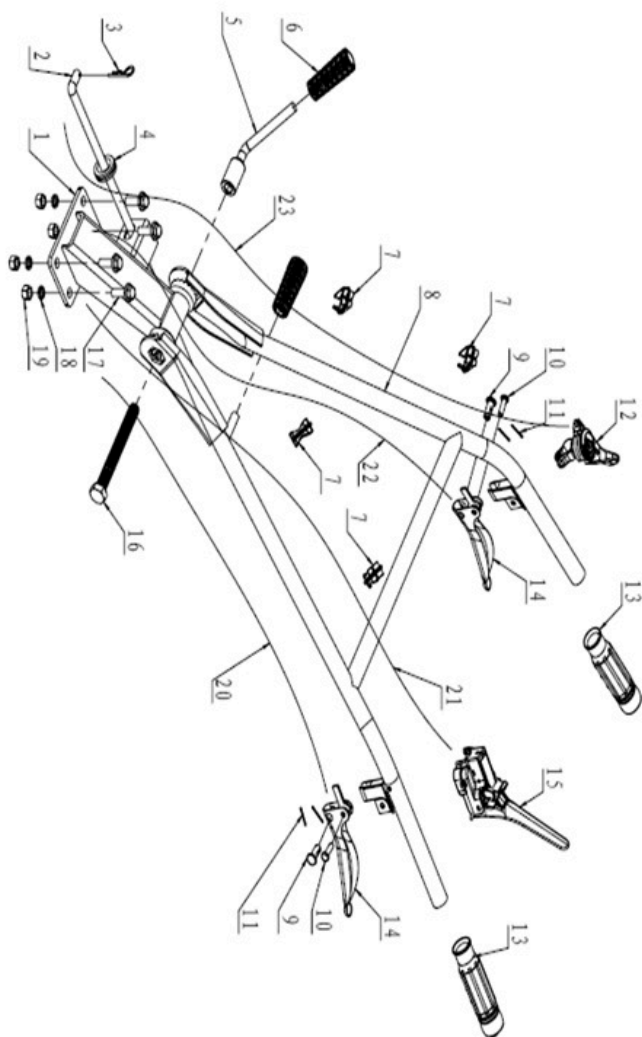
Technical specifications

INTERCULTIVATOR /POWER WEEDER

| | |
|------------------------------|---|
| MODEL NO. | AM-MPT-1100-6D-ELITE |
| TILLING WIDTH (MM) | 1000 |
| TILLING LENGTH(MM) | ≥100 |
| GEAR SHIFTING | 2,0,1,-1 |
| DRIVE TYPE | GEAR DRIVE |
| TRANSMISSION OIL CAPACITY(L) | 1.6 |
| ENGINE MODEL | AM-178F |
| RATED POWER HP/KW/RPM | 4.4/6/3600 |
| NW/G.W. (KG) | 88/111 |
| ACCESSORIES | 24PCS DRY LAND BLADES(2+1 TYPE), 2NOS. SIDE DISC,4,0-8 RUBBER TYRE WITH K2 ADJUSTABLE DITCHER |

TRANSMISSION DIAGRAM & PART LIST OF 6D ELITE

Handle Parts

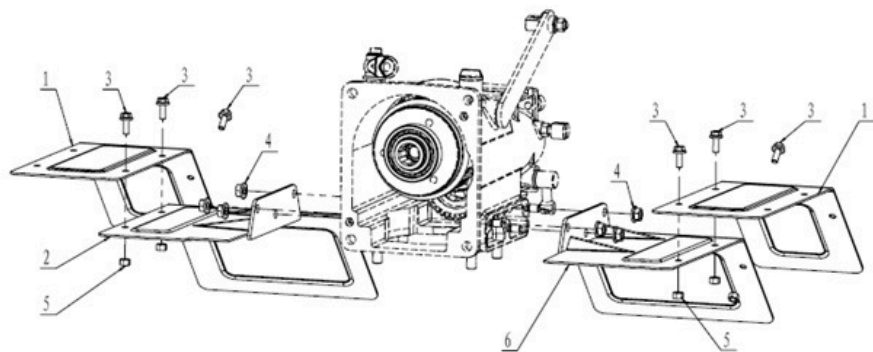


TRANSMISSION DIAGRAM & PART LIST OF 6D ELITE

| PART NO | DESCRIPTION |
|----------------|--|
| AM-RTD-HA-01 | Handle seat |
| AM-RTD-HA-02 | shift lever |
| AM-RTD-HA-03 | Clip B |
| AM-RTD-HA-04 | Handle seat wear-sleeve |
| AM-RTD-HA-05 | High And Low Lock Comp |
| AM-RTD-HA-06 | Grip |
| AM-RTD-HA-07 | Clip |
| AM-RTD-HA-08 | Handle bar |
| AM-RTD-HA-09 | lacking cord connector |
| AM-RTD-HA-10 | Pin |
| AM-RTD-HA-11 | Splitpin |
| AM-RTD-HA-12 | Shut Down Switch Comp |
| AM-RTD-HA-13 | Grip |
| AM-RTD-HA-14 | Reverse Gear/Clutch Grip |
| AM-RTD-HA-15 | Emergency stop handlebar |
| AM-RTD-HA-16 | Hexagon head bolts-full thread |
| AM-RTD-HA-17 | Hex bolt with flange (B grade, Heavy series) |
| AM-RTD-HA-18 | spring washer (standard) |
| AM-RTD-HA-19 | Hex nut(C grade, 1 type) |
| AM-RTD-HA-20 | Clutch Cable |
| AM-RTD-HA-21 | Flameout Switch Cable Comp WM1000NA |
| AM-RTD-HA-22 | Reverse Gear Cable |
| AM-RTD-HA-23 | Throttle Cable Comp |

TRANSMISSION DIAGRAM & PART LIST OF 6D ELITE

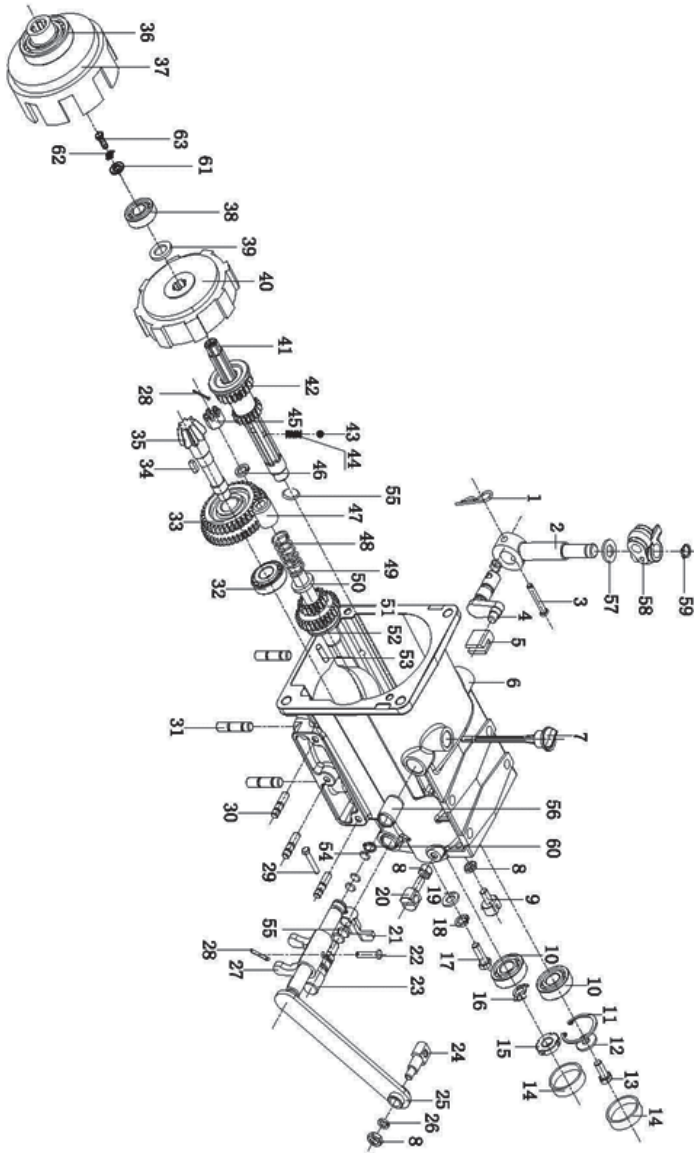
Fender Parts



| PART NO | DESCRIPTION |
|--------------|--|
| AM-RTD-FP-01 | vice fender |
| AM-RTD-FP-02 | fender(right) |
| AM-RTD-FP-03 | Hex bolt with flange (B grade,Heavy series) |
| AM-RTD-FP-04 | Hex nut with flange M8(A grade) |
| AM-RTD-FP-05 | Hex nut(C grade, 1 type) |
| AM-RTD-FP-06 | fender (left) |

TRANSMISSION DIAGRAM & PART LIST OF 6D ELITE

SHIFT GEARS DIAGRAM-A



SPARE PART LIST OF AM-MPT-1100-6D ELITE

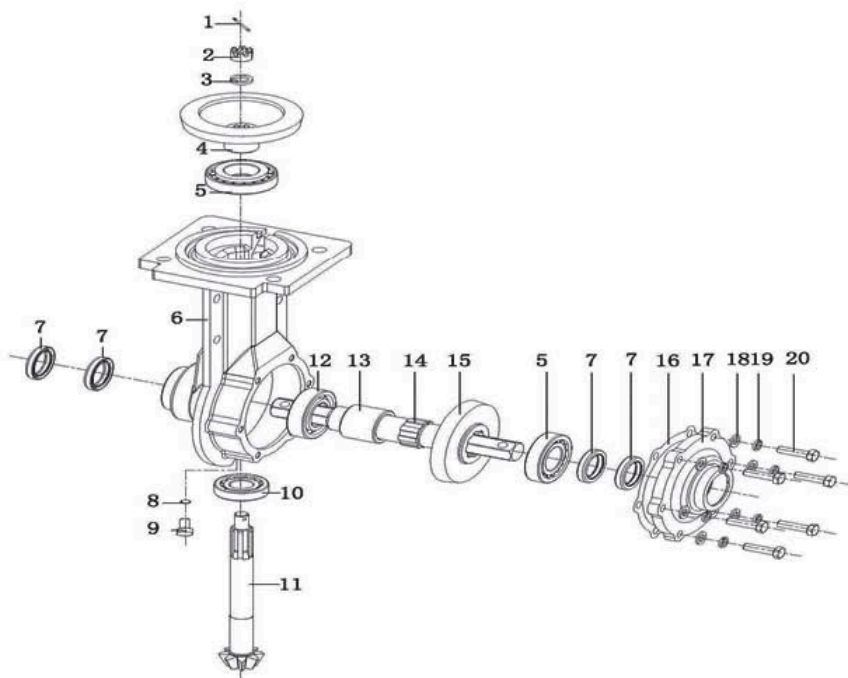
SHIFT GEARS PARTS-A

| Part No | Description |
|--------------|--------------------------|
| AM-RTD-TA-1 | Clipφ2 |
| AM-RTD-TA-2 | Sheath,Shift Rod |
| AM-RTD-TA-3 | Pin6×40,Shift Rod |
| AM-RTD-TA-4 | Shift Axes |
| AM-RTD-TA-5 | Shift fork |
| AM-RTD-TA-6 | Shift Gear box |
| AM-RTD-TA-7 | Dipstick |
| AM-RTD-TA-8 | Nut M8 |
| AM-RTD-TA-9 | Seat,cluth cable |
| AM-RTD-TA-10 | Bearing 6203 |
| AM-RTD-TA-11 | A type external circlip |
| AM-RTD-TA-12 | Washer 8 |
| AM-RTD-TA-13 | Bolt M8×20 |
| AM-RTD-TA-14 | Oil plug |
| AM-RTD-TA-15 | Round nut |
| AM-RTD-TA-16 | Tap washer 14 |
| AM-RTD-TA-17 | Bolt M10×25 |
| AM-RTD-TA-18 | Spring Washer10 |
| AM-RTD-TA-19 | Washer10 |
| AM-RTD-TA-20 | Seat,reverse gear cable |
| AM-RTD-TA-21 | Rever gear fork |
| AM-RTD-TA-22 | Pin6×29,cluth fork |
| AM-RTD-TA-23 | Axes,rever gear fork |
| AM-RTD-TA-24 | Seat,cluth cable |
| AM-RTD-TA-25 | Axes,cluth fork |
| AM-RTD-TA-26 | Spring Washer8 |
| AM-RTD-TA-27 | Cluth fork |
| AM-RTD-TA-28 | Splitpin 1.6×20 |
| AM-RTD-TA-29 | Bolt M5×30 |
| AM-RTD-TA-30 | Stud M8*25 |
| AM-RTD-TA-31 | Stud M10/36 |
| AM-RTD-TA-32 | Taper ball bearing 30203 |

| Part No | Description |
|--------------|-----------------------------|
| AM-RTD-TA-33 | Double gear,countershaft |
| AM-RTD-TA-34 | KeyA6×6×20 |
| AM-RTD-TA-35 | Countershaft |
| AM-RTD-TA-36 | Bearing 6007 |
| AM-RTD-TA-37 | Cover,clutch |
| AM-RTD-TA-38 | Axletree 6204 |
| AM-RTD-TA-39 | Clutch washer |
| AM-RTD-TA-40 | Core comp, clutch |
| AM-RTD-TA-41 | Principal axes |
| AM-RTD-TA-42 | Iniative gear |
| AM-RTD-TA-43 | Steel ball Sφ6.35 |
| AM-RTD-TA-44 | Spring ,principal axes |
| AM-RTD-TA-45 | Nut M12 |
| AM-RTD-TA-46 | Spring Washer12 |
| AM-RTD-TA-47 | Restrict cover,reverse gear |
| AM-RTD-TA-48 | Spring seat,reverse gear |
| AM-RTD-TA-49 | Axes,reverse gear |
| AM-RTD-TA-50 | Spring seat,reverse gear |
| AM-RTD-TA-51 | Double gear,reverse gear |
| AM-RTD-TA-52 | Pushing plate,reverse gear |
| AM-RTD-TA-53 | Cylindrical pin |
| AM-RTD-TA-54 | O-ring11.2×2.65 |
| AM-RTD-TA-55 | O-ring18×1.8 |
| AM-RTD-TA-56 | Sheath 20×16×29 |
| AM-RTD-TA-57 | Washer10 |
| AM-RTD-TA-58 | PTO Hinge B |
| AM-RTD-TA-59 | Ring 9 |
| AM-RTD-TA-60 | Ring 15 |
| AM-RTD-TA-61 | Gasket 8 |
| AM-RTD-TA-62 | Sawtooh loched gasket |
| AM-RTD-TA-63 | Bolt M8×20 |

DIAGRAM & SPARE PART LIST OF AM-MPT-1100-6D ELITE

TRANSMISSION CASE DIAGRAM & PARTS-B

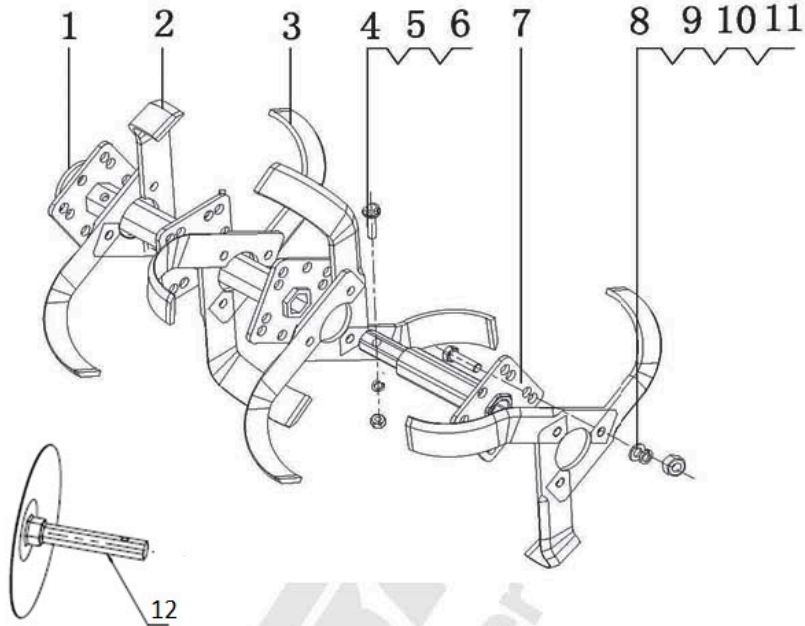


| Part No. | Description |
|--------------|-------------------------|
| AM-RTD-TB-1 | Splitpin |
| AM-RTD-TB-2 | Nut |
| AM-RTD-TB-3 | Spring Washer12 |
| AM-RTD-TB-4 | Driven umbrella gear |
| AM-RTD-TB-5 | Taper ball bearing30206 |
| AM-RTD-TB-6 | Walking case |
| AM-RTD-TB-7 | Oil Seal |
| AM-RTD-TB-8 | O-ring |
| AM-RTD-TB-9 | Drain plug |
| AM-RTD-TB-10 | Taper ball bearing |

| Part No. | Description |
|--------------|-----------------------|
| AM-RTD-TB-11 | Umbrella gear axes |
| AM-RTD-TB-12 | Bearing |
| AM-RTD-TB-13 | Cover,output axes |
| AM-RTD-TB-14 | Flange output axes |
| AM-RTD-TB-15 | Walking umbrella gear |
| AM-RTD-TB-16 | Side cover gasket |
| AM-RTD-TB-17 | Side cover |
| AM-RTD-TB-18 | Washer |
| AM-RTD-TB-19 | Spring Washer |
| AM-RTD-TB-20 | Bolt |

DIAGRAM & SPARE PARTS LIST OF AM-MPT-1100-6D ELITE

ROTARY TILLER DIAGRAM & PARTS-C

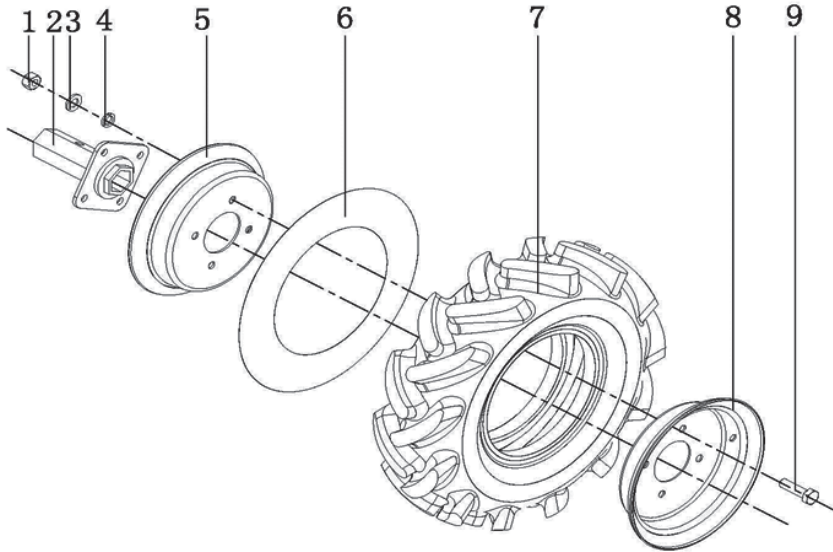


| Part No. | Description |
|-------------|-----------------|
| AM-RTD-TC-1 | Main tube |
| AM-RTD-TC-2 | Blade (R) |
| AM-RTD-TC-3 | Blade (L) |
| AM-RTD-TC-4 | Bolt M8×35 |
| AM-RTD-TC-5 | Spring Washer 8 |
| AM-RTD-TC-6 | Washer 8 |

| Part No. | Description |
|--------------|------------------|
| AM-RTD-TC-7 | Counter tube |
| AM-RTD-TC-8 | Bolt M10×35 |
| AM-RTD-TC-9 | Spring Washer 10 |
| AM-RTD-TC-10 | Washer 10 |
| AM-RTD-TC-11 | Nut M10 |
| AM-RTD-TC-12 | Side Disc |

DIAGRAM & SPARE PART LIST OF AM-MPT-1100-6D ELITE

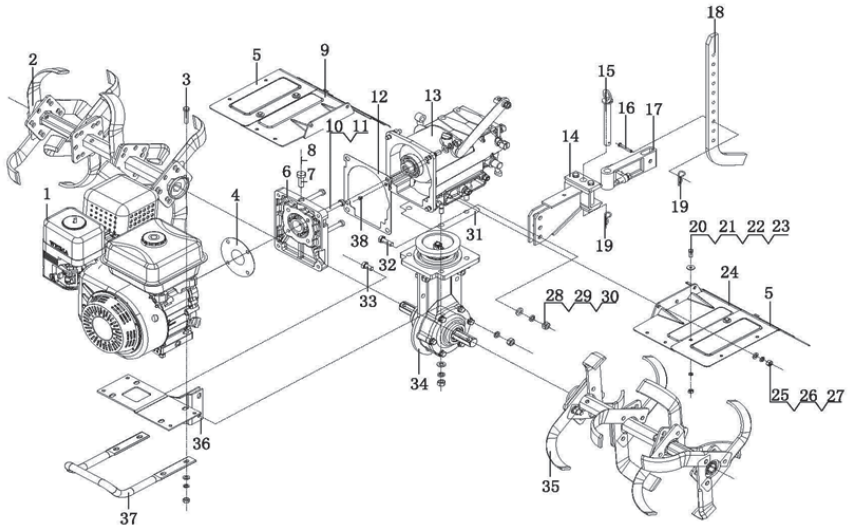
LAMBDOIDAL WHEEL DIAGRAM & PARTS-D



| Part No. | Description |
|-------------|-------------------------|
| AM-RTD-TD-1 | Nut M10 |
| AM-RTD-TD-2 | Wheel axle |
| AM-RTD-TD-3 | Spring Washer10 |
| AM-RTD-TD-4 | Washer10 |
| AM-RTD-TD-5 | Spoke (R) |
| AM-RTD-TD-6 | Inner tube |
| AM-RTD-TD-7 | Outer rubber tyer3.50-6 |
| AM-RTD-TD-8 | Spoke (L) |
| AM-RTD-TD-9 | Bolt M10×30 |

DIAGRAM & SPARE PART LIST OF AM-MPT-1100-6D ELITE

JOINT DIAGRAM & PARTS-E

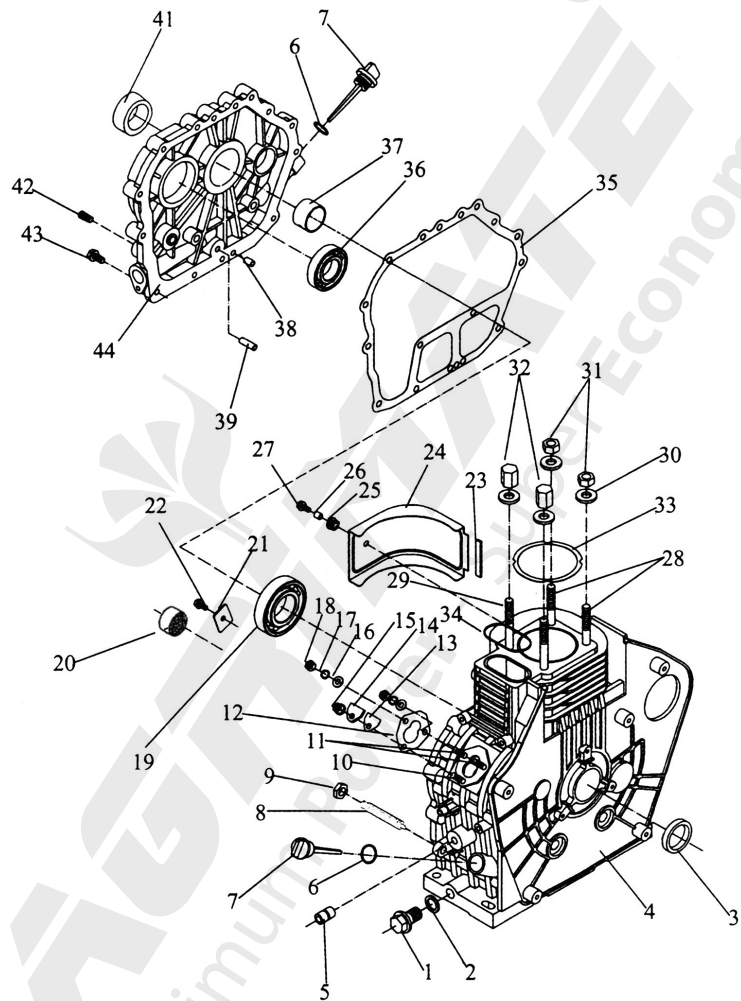


| Part No. | Description |
|--------------|-------------------------|
| AM-RTD-TE-1 | Gasoline Engine |
| AM-RTD-TE-2 | Dry land blade comp(R) |
| AM-RTD-TE-3 | Bolt M8x40 |
| AM-RTD-TE-4 | Flange gasket |
| AM-RTD-TE-5 | Vice-fender |
| AM-RTD-TE-6 | Flange |
| AM-RTD-TE-7 | Bolt M12x1.25x25 |
| AM-RTD-TE-8 | Pin 2.6*25 |
| AM-RTD-TE-9 | Right Fender |
| AM-RTD-TE-10 | Bolt M8x35 |
| AM-RTD-TE-11 | Spring Washer8 |
| AM-RTD-TE-12 | Aiproof gasket,gear box |
| AM-RTD-TE-13 | Gear box comp |
| AM-RTD-TE-14 | Dragging assy |
| AM-RTD-TE-15 | Pin with ring |
| AM-RTD-TE-16 | Pin8x40 |
| AM-RTD-TE-17 | Connection frame |
| AM-RTD-TE-18 | Resistance rod |
| AM-RTD-TE-19 | Clipφ2 |
| AM-RTD-TE-20 | Bolt M6x16 |

| Part No. | Description |
|--------------|--|
| AM-RTD-TE-21 | Nut M6 |
| AM-RTD-TE-22 | Spring Washer6 |
| AM-RTD-TE-23 | Washer6 |
| AM-RTD-TE-24 | Dust cover (L) |
| AM-RTD-TE-25 | Spring Washer8 |
| AM-RTD-TE-26 | Washer8 |
| AM-RTD-TE-27 | Nut M8 |
| AM-RTD-TE-28 | Spring Washer10 |
| AM-RTD-TE-29 | Washer10 |
| AM-RTD-TE-30 | Nut M10 |
| AM-RTD-TE-31 | Gasket for gear box and walking case,80.2/80.5 |
| AM-RTD-TE-32 | Bolt M10x30 |
| AM-RTD-TE-33 | Bolt M10x25 |
| AM-RTD-TE-34 | Transmission Case Parts |
| AM-RTD-TE-35 | Dry land blade comp(L) |
| AM-RTD-TE-36 | Support frame, engine |
| AM-RTD-TE-37 | Bumper comp |
| AM-RTD-TE-38 | Locating pin for gear box |

ENGINE PART DIAGRAM OF AM-MPT-1100-6D- ELITE

CRANKCASE ASSY - A



| 178FS | 178FGET | 178FG |
|-------|---------|----------|
| 1 | 1-1 | 42-1 |

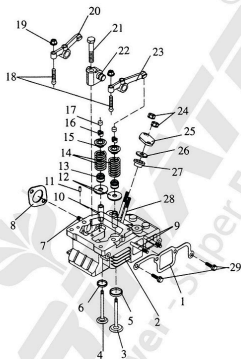
SPARE PART LIST OF AM-MPT-1100-6D ELITE

| Part No. | Description |
|-------------------|-----------------------------|
| AM-1100-178F-A1 | Drain Plug/Crankshaft Plug |
| AM-1100-178F-A2 | Oil Plug Seal Assy |
| AM-1100-178F-A3 | Oil Seal Sg30*45*8 |
| AM-1100-178F-A4 | Cylinder Block.(Manual) |
| | Cylinder Block.(Key start) |
| AM-1100-178F-A5 | Needle Bearing/ Hk081410 |
| AM-1100-178F-A6 | O-Ring 24*2.4 |
| AM-1100-178F-A7 | Oil Filler Gap |
| AM-1100-178F-A8/9 | Fuel Controller |
| AM-1100-178F-A10 | Stud AM6*30 |
| AM-1100-178F-A11 | Stud AM6*40 |
| AM-1100-178F-A12 | Fuel InjectionPumpGasket |
| AM-1100-178F-A13 | Seal Gasket |
| AM-1100-178F-A14 | Seal Plate |
| AM-1100-178F-A15 | Nut M6 |
| AM-1100-178F-A16 | Washer 6 |
| AM-1100-178F-A17 | Spring Washer 6 |
| AM-1100-178F-A19 | Ball Bearing 6307/P5 |
| AM-1100-178F-A20 | Needle Bearing HM1512 |
| AM-1100-178F-A21 | Retainer |
| AM-1100-178F-A22 | Bolt M8*16 |
| AM-1100-178F-A23 | Cushion Blocking |

| Part No. | Description |
|--------------------|--------------------------------------|
| AM-1100-178F-A24 | Governor |
| AM-1100-178F-A25 | Vibration Isolation Cushion Block |
| AM-1100-178F-A26 | Shrath |
| AM-1100-178F-A27 | Bolt M6*20 |
| AM-1100-178F-A28 | Cylinder Head Stud/ M9*87 |
| AM-1100-178F-A29 | Cylinder Head Stud/ M9*104.5 |
| AM-1100-178F-A30 | Washer |
| AM-1100-178F-A31 | Cylinder Head Nutshort |
| AM-1100-178F-A32 | Cylinder Head Nut (Long) |
| AM-1100-178F-A33 | Cylinder Head Shim |
| AM-1100-178F-A34 | Cylinder Head Ring |
| AM-1100-178F-A35 | Crank Case Gasket |
| AM-1100-178F-A36 | Ball Bearing 6206/P5 |
| AM-1100-178F-A37 | Main Bearing |
| AM-1100-178F-A38 | Pin 8*12 |
| AM-1100-178F-A39 | Oil Indicator |
| AM-1100-178F-A41 | Oil Seal SG30*45*10 |
| AM-1100-178F-A42 | Plug |
| AM-1100-178F-A42-1 | Oil Pressure Sensor |
| AM-1100-178F-A43 | Bolt M8 * 33.5 |
| AM-1100-178F-A44 | Crank Case Cover |

DIAGRAM & SPARE PART LIST OF AM-MPT-1100-6D ELITE

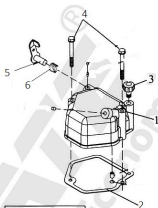
CYLINDER HEAD ASSY - B



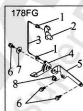
| PART NO. | DESCRIPTION | PART NO. | DESCRIPTION |
|------------------------|------------------------|------------------|-----------------------|
| AM-1100-178F-B1 | Air Intake Gasket | AM-1100-178F-B17 | Valve adjusting plate |
| AM-1100-178F-B2/5/6/10 | Cylinder Head | AM-1100-178F-B18 | Arm Assy |
| AM-1100-178F-B3 | Intake valve | AM-1100-178F-B19 | Nut |
| AM-1100-178F-B4 | Exhaust valve | AM-1100-178F-B20 | Valve Rock |
| AM-1100-178F-B7 | Stud | AM-1100-178F-B21 | Bolt |
| AM-1100-178F-B8 | Silencer Gasket | AM-1100-178F-B22 | Rock arm Seat |
| AM-1100-178F-B9 | Stud | AM-1100-178F-B23 | Ex Valve Rock |
| AM-1100-178F-B11 | Pin | AM-1100-178F-B24 | Nut |
| AM-1100-178F-B12 | Valve spring washer | AM-1100-178F-B25 | Nozzel Retainer |
| AM-1100-178F-B13 | Valve Conduit oil seal | AM-1100-178F-B26 | Spacer Washer |
| AM-1100-178F-B14 | Spring retiner | AM-1100-178F-B27 | Spacer |
| AM-1100-178F-B15 | Rock Arm Assy | AM-1100-178F-B28 | Stud |
| AM-1100-178F-B16 | Cotter | AM-1100-178F-B29 | Bolt |

spare parts diagram & part list of 6S elite

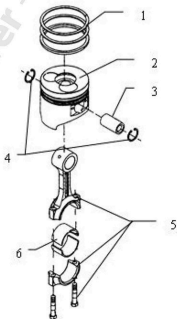
CYLINDER HEAD COVER - C



| PART NO. | DESCRIPTION |
|-----------------|----------------------|
| AM-1100-178F-C1 | Bonnet assy |
| AM-1100-178F-C2 | Bonnet gasket |
| AM-1100-178F-C3 | Bolt |
| AM-1100-178F-C4 | Bolt |
| AM-1100-178F-C5 | De compressor Roller |
| AM-1100-178F-C6 | De compressor spring |



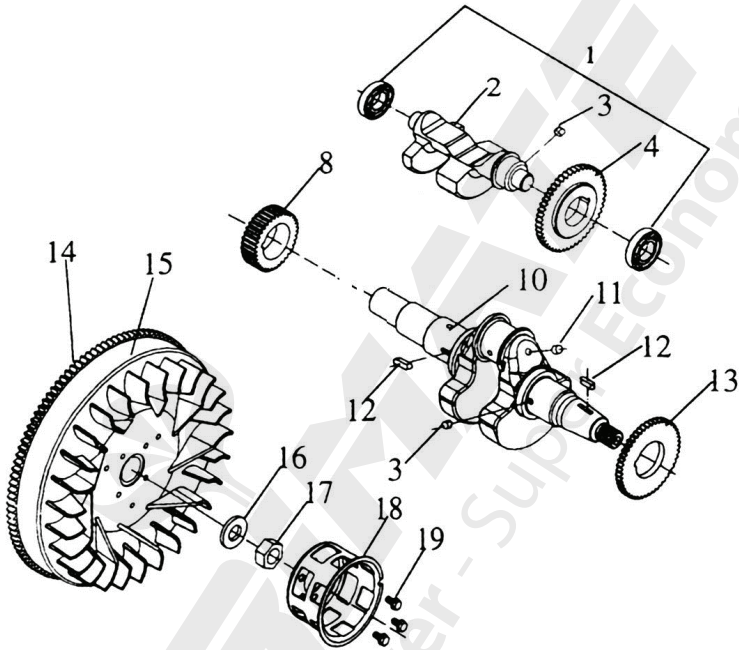
PISTON + CONNECTING ASSY - D



| Part No. | Description |
|-----------------|---------------------|
| AM-1100-178F-D1 | Ring Set |
| AM-1100-178F-D2 | Piston |
| AM-1100-178F-D3 | Piston Pin |
| AM-1100-178F-D4 | Washer 21 |
| AM-1100-178F-D5 | Connecting Rod Assy |
| AM-1100-178F-D6 | Crank Pin Bearing |

DIAGRAM & SPARE PART LIST OF AM-MPT-1100-6D ELITE

CRANKSHAFT + FLYWHEEL - E

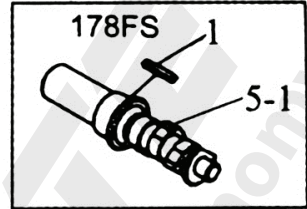
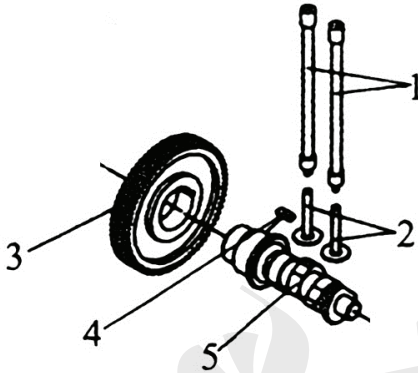


| Part No. | Description |
|------------------|------------------------------|
| AM-1100-178F-E1 | Ball Bearing 6202/P5 |
| AM-1100-178F-E2 | Balancer Shaft |
| AM-1100-178F-E3 | Key 5x7 |
| AM-1100-178F-E4 | Timing Gear Of Balance Shaft |
| AM-1100-178F-E8 | Crankshaft Timing Gear |
| AM-1100-178F-E10 | Crank Shaft |
| AM-1100-178F-E11 | Steel Ball |
| AM-1100-178F-E12 | Key 5x12 |

| Part No. | Description |
|------------------|-----------------------------|
| AM-1100-178F-E13 | Drive Gear Of Balance Shsft |
| AM-1100-178F-E14 | Flywheel Ring Geat |
| AM-1100-178F-E15 | Fly Wheel |
| AM-1100-178F-E16 | Fly Wheel Nut Washer |
| AM-1100-178F-E17 | Fly Wheel Nut |
| AM-1100-178F-E18 | Starter Pulley |
| AM-1100-178F-E19 | Bolt M6*12 |

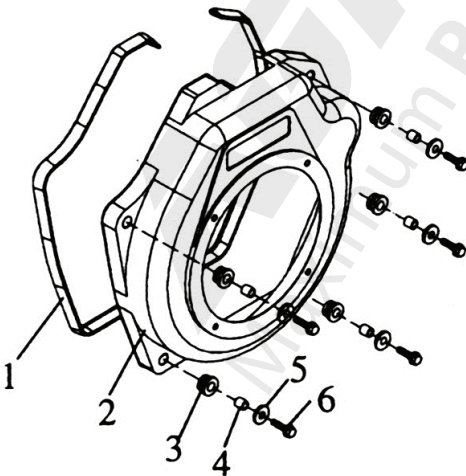
DIAGRAM & SPARE PART LIST OF AM-MPT-1100-6D ELITE

CAMSHAFT ASSY - F



| Part No. | Description |
|-----------------|----------------------|
| AM-1100-178F-F1 | Valve Rod Assy |
| AM-1100-178F-F2 | Valve Tappet |
| AM-1100-178F-F3 | Camshaft Timing Gear |
| AM-1100-178F-F4 | Key 5*14 |
| AM-1100-178F-F5 | Camshaft |

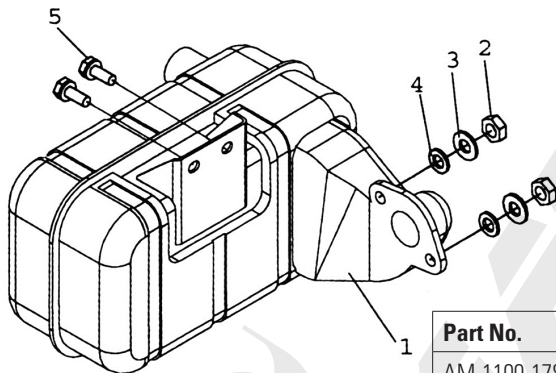
FAN COVER - G



| Part No. | Description |
|-----------------|----------------------|
| AM-1100-178F-G1 | Shock Absorber Seat |
| AM-1100-178F-G2 | Fan Case Welded Assy |
| AM-1100-178F-G3 | Shock Absorber |
| AM-1100-178F-G4 | Collar10*10 |
| AM-1100-178F-G5 | Washer 6 |
| AM-1100-178F-G6 | Bolt M6*25 |

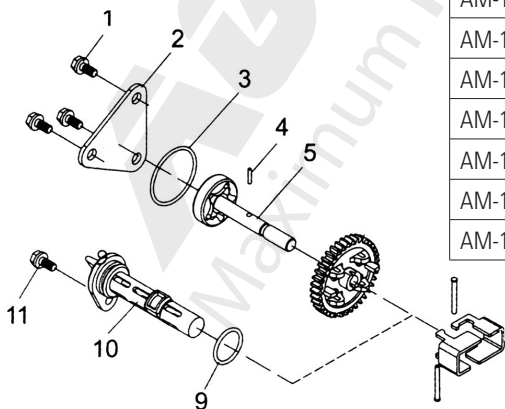
DIAGRAM & SPARE PART LIST OF AM-MPT-1100-6D ELITE

MUFFLER ASSY - H



| Part No. | Description |
|-----------------|-----------------|
| AM-1100-178F-H1 | Silencer Assy |
| AM-1100-178F-H2 | Nut 8 |
| AM-1100-178F-H3 | Spring Washer 6 |
| AM-1100-178F-H4 | Washer 8 |
| AM-1100-178F-H5 | Bolt M6*14 |

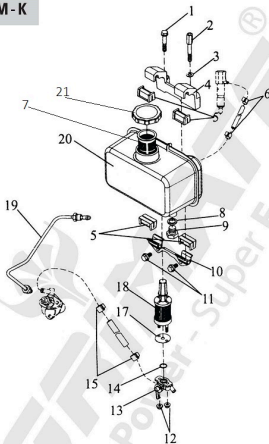
LUBRICATING SYSTEM - J



| Part No. | Description |
|------------------|-----------------|
| AM-1100-178F-J1 | Bolt M6*12 |
| AM-1100-178F-J2 | Oil Pump Cover |
| AM-1100-178F-J3 | O-Ring 34.8*1.8 |
| AM-1100-178F-J4 | Pin 3*16 |
| AM-1100-178F-J5 | Oil Pump Assy |
| AM-1100-178F-J6 | Oil Pump Gear |
| AM-1100-178F-J9 | O-Ring 242.4 |
| AM-1100-178F-J10 | Oil Filter Assy |
| AM-1100-178F-J11 | Bolt M6*14 |

DIAGRAM & SPARE PART LIST OF AM-MPT-1100-6D ELITE

FUEL SYSTEM - K

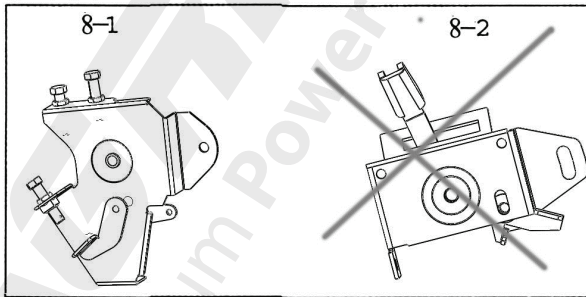
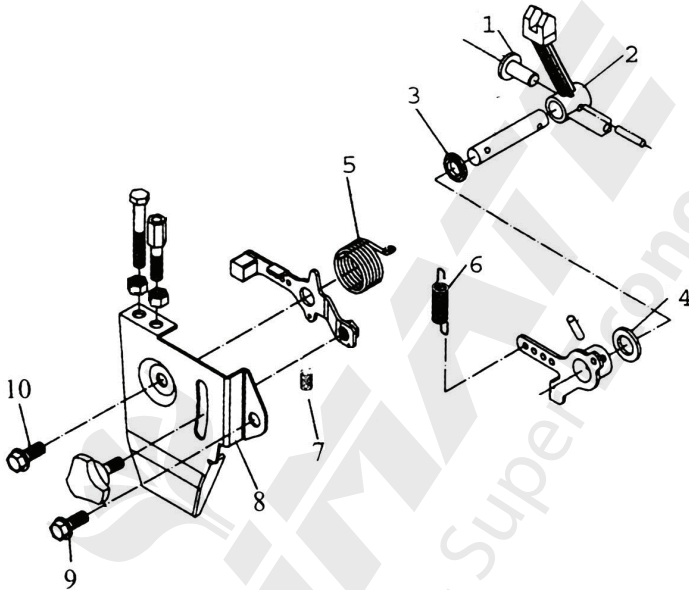


| PART NO. | DESCRIPTION |
|------------------|-----------------------|
| AM-1100-178F-K1 | Bolt |
| AM-1100-178F-K2 | Upper stay Bolt |
| AM-1100-178F-K3 | Washer |
| AM-1100-178F-K4 | Upper stay Bolt |
| AM-1100-178F-K5 | Fuel Tank Damper |
| AM-1100-178F-K6 | Fuel return pipe Assy |
| AM-1100-178F-K7 | Fuel Filter |
| AM-1100-178F-K8 | Fuel Tank Plug seat |
| AM-1100-178F-K9 | Fuel Tank plug |
| AM-1100-178F-K10 | Lower Stay Assy |
| AM-1100-178F-K11 | Bolt |

| PART NO. | DESCRIPTION |
|------------------|----------------------|
| AM-1100-178F-K12 | Nut |
| AM-1100-178F-K13 | Fuel Tank Gock Assy |
| AM-1100-178F-K14 | O-Ring |
| AM-1100-178F-K15 | Fuel Pipe Assy |
| AM-1100-178F-K16 | Fuel pipe assy |
| AM-1100-178F-K17 | Fuel Filter Gasket |
| AM-1100-178F-K18 | Fuel Filter Gasket |
| AM-1100-178F-K19 | Fuel Injec.Pipe Assy |
| AM-1100-178F-K20 | Fuel Tank Assy |
| AM-1100-178F-K21 | Fuel Tank cap assy |

DIAGRAM & SPARE PART LIST OF AM-MPT-1100-6D ELITE

SPEED CONTROL SYSTEM - L

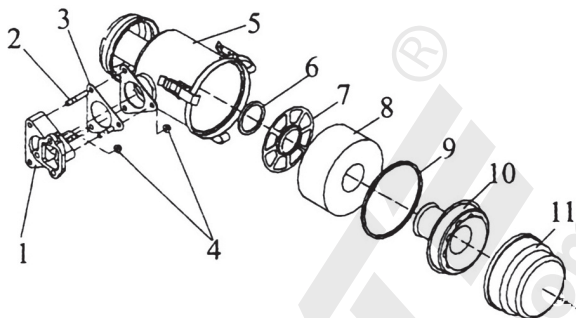


| Part No. | Description |
|-----------------|-----------------|
| AM-1100-178F-L1 | Tappet 25.5 |
| AM-1100-178F-L2 | Lever Fork |
| AM-1100-178F-L3 | Oil Seal 8×14×4 |
| AM-1100-178F-L4 | Lever Washer |
| AM-1100-178F-L5 | Return Spring |

| Part No. | Description |
|-------------------|--------------------|
| AM-1100-178F-L6 | Governor Spring |
| AM-1100-178F-L7 | Fine Spring |
| AM-1100-178F-L8-1 | Control Lever Assy |
| AM-1100-178F-L9 | Nut M6×12 |
| AM-1100-178F-L10 | Nut M6×25 |

DIAGRAM & SPARE PART OF AM-MPT-1100-6D ELITE

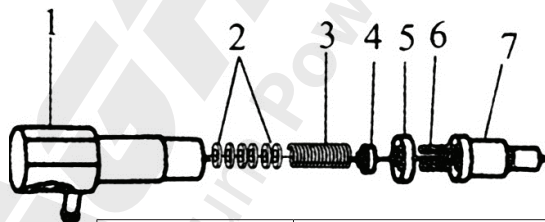
AIR CLEANER - M



| Part No. | Description |
|-----------------|----------------------------------|
| AM-1100-178F-M1 | Intake Pipe/ Integration |
| AM-1100-178F-M2 | Nut M6×12 |
| AM-1100-178F-M3 | Air Cleaner Gasket |
| AM-1100-178F-M5 | Air Filter Connecting Disc |
| AM-1100-178F-M6 | Toghtenig Bolt Of Air Cleaner |

| Part No. | Description |
|------------------|-----------------------------|
| AM-1100-178F-M7 | Washer I |
| AM-1100-178F-M8 | Air Filter Case |
| AM-1100-178F-M9 | O-Ring |
| AM-1100-178F-M10 | Air Cleaner Element Assy |
| AM-1100-178F-M11 | Air Flter Sump |

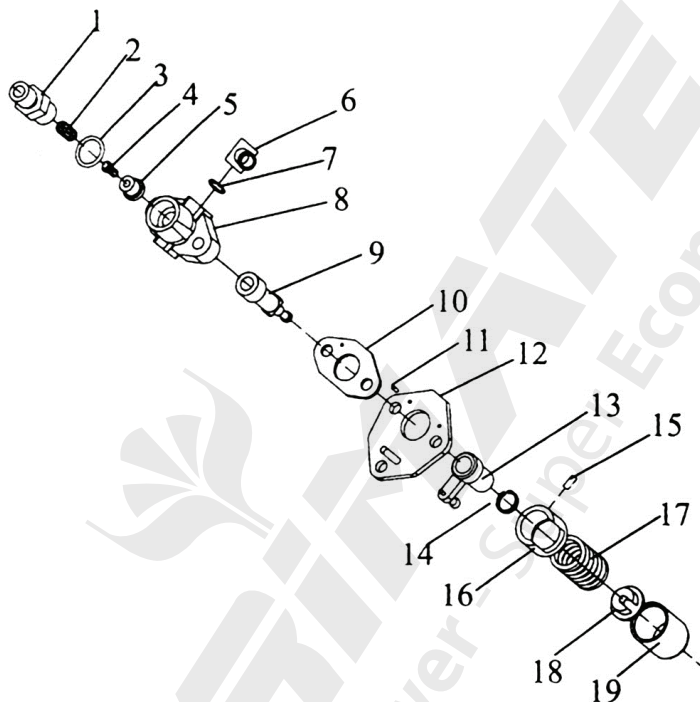
FUEL INJECTOR - N



| Part No. | Description |
|-----------------|----------------------------|
| AM-1100-178F-N1 | Fuel Iniection Vaive Block |
| AM-1100-178F-N2 | Washer |
| AM-1100-178F-N3 | Volt-Adjustment Spring |
| AM-1100-178F-N4 | Mandril |
| AM-1100-178F-N5 | Intermediate Block |
| AM-1100-178F-N6 | Locating Pin |
| AM-1100-178F-N7 | Nozzle |

DIAGRAM & SPARE PART LIST OF AM-MPT-1100-6D ELITE

FUEL INJECTION PUMP - P

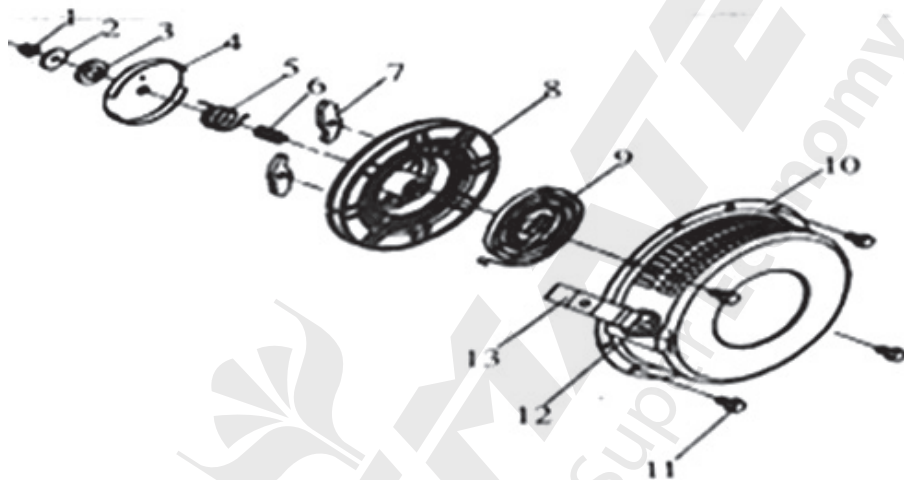


| Part No. | Description |
|-----------------|------------------------------------|
| AM-1100-178F-P1 | Fuel Delivery Valve Forcing Holder |
| AM-1100-178F-P2 | Fuel Delivery Valve Spring |
| AM-1100-178F-P3 | Fuel Delivery Valve Seat Gasket |
| AM-1100-178F-P4 | Fuel Delivery Valve Core |
| AM-1100-178F-P5 | Fuel Delivery Valve Seat |
| AM-1100-178F-P6 | Fuel Pipe Weldment Assy. |
| AM-1100-178F-P7 | O-Ring |
| AM-1100-178F-P8 | Fip Block |
| AM-1100-178F-P9 | Plunger |

| Part No. | Description |
|----------|------------------------------------|
| 10 | Washer |
| 11 | Pin2x6 |
| 12 | Fip Connecting Plate |
| 13 | Fuel Limiting Sheath Weldment Assy |
| 14 | Steel Clip |
| 15 | Pin3x8 |
| 16 | Support |
| 17 | Spring |
| 18 | Spring Holder |
| 19 | Tappet |

DIAGRAM & SPARE PART LIST OF AM-MPT-1100-6D ELITE

RECOIL STARTER ASSY - Q



| Part No. | Description |
|-----------------|--------------------|
| AM-1100-178F-Q1 | Nut M8 |
| AM-1100-178F-Q2 | Friction Plate |
| AM-1100-178F-Q3 | Friction Reel |
| AM-1100-178F-Q4 | Spring Cover |
| AM-1100-178F-Q5 | Return Spring |
| AM-1100-178F-Q6 | Compression Spring |
| AM-1100-178F-Q7 | Ratchet |

| Part No. | Description |
|------------------|-----------------|
| AM-1100-178F-Q8 | Starter Reel |
| AM-1100-178F-Q9 | Spiral Spring |
| AM-1100-178F-Q10 | Outer Case Assy |
| AM-1100-178F-Q11 | Bolt M6 X8 |
| AM-1100-178F-Q12 | Starter Rope |
| AM-1100-178F-Q13 | Starter Handle |

INSPECTION & MAINTENANCE

For safety use, make sure the machine is cleaned every three-months. Before working, make sure to inspect the filter and the nozzle, and ensure there is no impurity. After working, make sure there is no water in the pump and the hose.

If the machine needs to be repaired in the guarantee period, please return the machine to the shop. You need to provide the certificate of purchase in order to repair or get the substitute.

Before Packing, the machine should be cleaned, then use closed packaging, packaging should be firm. Store the machine in dry place.

For transportation safety. The machine should comply with ISTA.



Meaning of crossed - out wheeled dustbin:

Do not dispose of electrical machines as unsorted municipal waste, use separate collection facilities.

If electrical machines are disposed of in landfills or dumps, hazardous substances can leak into the groundwater and get into the food chain, damaging your health and well-being.

When replacing old machines with new ones, the retailer is legally obligated to take back your old machine for disposals at least free of charge.

Warranty Card

CUSTOMER COPY



Date _____

Purchaser's Name & Address

Product Name

AM-MPT-1100-6D ELITE INTERCULTIVATOR/POWER WEEDER

Product Serial No.

Invoice / DN No.

Date of Delivery

Dealer's Office Seal

Dealer Sign _____

Customer Sign. _____

I/We accept the terms and conditions of Warranty as in the Warranty Card.

Warranty Card

DEALER'S COPY



Date _____

Purchaser's Name & Address

Product Name

AM-MPT-1100-6D ELITE INTERCULTIVATOR/POWE WEEDER

Product Serial No.

Invoice / DN No.

Date of Delivery

Dealer's Office Seal

Dealer Sign _____

Customer Sign. _____

I/We accept the terms and conditions of Warranty as in the Warranty Card.

Warranty Card

COMPANY COPY



Date _____

Purchaser's Name & Address

Product Name

AM-MPT-1100-6D ELITE INTERCULTIVATOR/POWER WEEDER

Product Serial No.

Invoice / DN No.

Date of Delivery

Dealer's Office Seal

Dealer Sign _____

Customer Sign. _____

I/We accept the terms and conditions of Warranty as in the Warranty Card.

1. **LIMITED WARRANTY PERIOD** : For a period of six months from the date of Sale / delivery of the product which ever is earlier. 2. **LIMITED WARRANTY OBLIGATION** : Replacement of defective part(s) by authorized dealer are free of charges. If found defective by reasons of defective material / poor workmanship, parts will be replaced and there will be no value re-imburement. 3. **TERMS & CONDITIONS** : a. Claims under warranty will be accepted on submission of Warranty Card duly filled and stamped by authorized dealer together with the original purchase document. . b. Shipping / transportation / Incidental charges incurred in replacing defective parts under warranty shall be borne by the purchaser.

WARRANTY null & void if

- (i) Lack of maintenance, (ii) Incorrect use of the machine or tampering, (iii) Use of non-genuine spare parts, (iv) Usage of acids, solvents, or any flammable materials, (v) Non-usage of filter water / clear water / soft water & using water above 40°C temperature, (vi) While using the pressure washers to draw water which is contaminated with dust & solvents (eg. paint thinners, gasoline, oil, etc.), (vii) Repair done by unauthorized service people, (viii) Those parts subject to wear & tear due to normal operations and plastic parts, rubber items etc, (ix) Loose connections, faulty electrical fixtures & fluctuations in power supply.
4. Should any failure occur during or after the warranty period, customer does not have the right to interrupt payment / price discount.
5. Incidental or consequential damages like inconvenience commercial loss, loss of tie, mental agony etc.
6. Loss of any nature due to operation or non-operation is not covered under warranty.
7. All free service are at Dealer's service point only.
8. Warranty ceases if service is not done periodically.
9. The attached card should be completed and returned to Ratnagiri Impex Pvt. Ltd. for registration immediately after sale / delivery.
10. The warranty is void unless you register the warranty card with Ratnagiri Impex Pvt. Ltd.
11. The decision of Ratnagiri Impex Pvt. Ltd., in settling the warranty is final in all respects.
12. All disputes are subject to Bangalore Courts Jurisdiction

1. **LIMITED WARRANTY PERIOD** : For a period of six months from the date of Sale / delivery of the product which ever is earlier. 2. **LIMITED WARRANTY OBLIGATION** : Replacement of defective part(s) by authorized dealer are free of charges. If found defective by reasons of defective material / poor workmanship, parts will be replaced and there will be no value re-imburement. 3. **TERMS & CONDITIONS** : a. Claims under warranty will be accepted on submission of Warranty Card duly filled and stamped by authorized dealer together with the original purchase document. . b. Shipping / transportation / Incidental charges incurred in replacing defective parts under warranty shall be borne by the purchaser.

WARRANTY null & void if

- (i) Lack of maintenance, (ii) Incorrect use of the machine or tampering, (iii) Use of non-genuine spare parts, (iv) Usage of acids, solvents, or any flammable materials, (v) Non-usage of filter water / clear water / soft water & using water above 40°C temperature, (vi) While using the pressure washers to draw water which is contaminated with dust & solvents (eg. paint thinners, gasoline, oil, etc.), (vii) Repair done by unauthorized service people, (viii) Those parts subject to wear & tear due to normal operations and plastic parts, rubber items etc, (ix) Loose connections, faulty electrical fixtures & fluctuations in power supply.
4. Should any failure occur during or after the warranty period, customer does not have the right to interrupt payment / price discount.
5. Incidental or consequential damages like inconvenience commercial loss, loss of tie, mental agony etc.
6. Loss of any nature due to operation or non-operation is not covered under warranty.
7. All free service are at Dealer's service point only.
8. Warranty ceases if service is not done periodically.
9. The attached card should be completed and returned to Ratnagiri Impex Pvt. Ltd. for registration immediately after sale / delivery.
10. The warranty is void unless you register the warranty card with Ratnagiri Impex Pvt. Ltd.
11. The decision of Ratnagiri Impex Pvt. Ltd., in settling the warranty is final in all respects.
12. All disputes are subject to Bangalore Courts Jurisdiction

1. **LIMITED WARRANTY PERIOD** : For a period of six months from the date of Sale / delivery of the product which ever is earlier. 2. **LIMITED WARRANTY OBLIGATION** : Replacement of defective part(s) by authorized dealer are free of charges. If found defective by reasons of defective material / poor workmanship, parts will be replaced and there will be no value re-imburement. 3. **TERMS & CONDITIONS** : a. Claims under warranty will be accepted on submission of Warranty Card duly filled and stamped by authorized dealer together with the original purchase document. . b. Shipping / transportation / Incidental charges incurred in replacing defective parts under warranty shall be borne by the purchaser.

WARRANTY null & void if

- (i) Lack of maintenance, (ii) Incorrect use of the machine or tampering, (iii) Use of non-genuine spare parts, (iv) Usage of acids, solvents, or any flammable materials, (v) Non-usage of filter water / clear water / soft water & using water above 40°C temperature, (vi) While using the pressure washers to draw water which is contaminated with dust & solvents (eg. paint thinners, gasoline, oil, etc.), (vii) Repair done by unauthorized service people, (viii) Those parts subject to wear & tear due to normal operations and plastic parts, rubber items etc, (ix) Loose connections, faulty electrical fixtures & fluctuations in power supply.
4. Should any failure occur during or after the warranty period, customer does not have the right to interrupt payment / price discount.
5. Incidental or consequential damages like inconvenience commercial loss, loss of tie, mental agony etc.
6. Loss of any nature due to operation or non-operation is not covered under warranty.
7. All free service are at Dealer's service point only.
8. Warranty ceases if service is not done periodically.
9. The attached card should be completed and returned to Ratnagiri Impex Pvt. Ltd. for registration immediately after sale / delivery.
10. The warranty is void unless you register the warranty card with Ratnagiri Impex Pvt. Ltd.
11. The decision of Ratnagiri Impex Pvt. Ltd., in settling the warranty is final in all respects.
12. All disputes are subject to Bangalore Courts Jurisdiction



1st Free Service Coupon

ISO 9001:2015
CERTIFIED COMPANY

FREE SERVICE COUPON (30 Days / 30 hrs (Which ever is earlier))

| | |
|--|----------------------|
| Model AM-MPT-1100-6D ELITE INTERCULTIVATOR/POWER WEEEDER | Serial Number |
| <input type="text"/> | <input type="text"/> |

| | | | |
|----------------------|----------------------|----------------------|----------------------|
| PDI Date | Service No. | Purchase bill no. | Date |
| <input type="text"/> | <input type="text"/> | <input type="text"/> | <input type="text"/> |

Dealer's Office Seal

Dealer Signature:.....

Customer Signature:.....

Conditions: Operations listed have been performed to my entire satisfaction without any labour charges. Only consumables were charged.

agriculture horticulture sericulture plantations forestry garden health care

WARRANTY AND FREE SERVICE COUPON



2nd Free Service Coupon

ISO 9001:2015
CERTIFIED COMPANY

FREE SERVICE COUPON 60 Days/60 hrs (Which ever is earlier)

| | |
|--|----------------------|
| Model AM-MPT-1100-6D ELITE INTERCULTIVATOR/POWER WEEEDER | Serial Number |
| <input type="text"/> | <input type="text"/> |

| | | | |
|----------------------|----------------------|----------------------|----------------------|
| PDI Date | Service No. | Purchase bill no. | Date |
| <input type="text"/> | <input type="text"/> | <input type="text"/> | <input type="text"/> |

Dealer's Office Seal

Dealer Signature:.....

Customer Signature:.....

Conditions: Operations listed have been performed to my entire satisfaction without any labour charges. Only consumables were charged.

agriculture horticulture sericulture plantations forestry garden health care

WARRANTY AND FREE SERVICE COUPON



3rd Free Service Coupon

ISO 9001:2015
CERTIFIED COMPANY

FREE SERVICE COUPON 90 Days/120 hrs (Which ever is earlier)

| | |
|--|----------------------|
| Model AM-MPT-1100-6D ELITE INTERCULTIVATOR/POWER WEEEDER | Serial Number |
| <input type="text"/> | <input type="text"/> |

| | | | |
|----------------------|----------------------|----------------------|----------------------|
| PDI Date | Service No. | Purchase bill no. | Date |
| <input type="text"/> | <input type="text"/> | <input type="text"/> | <input type="text"/> |

Dealer's Office Seal

Dealer Signature:.....

Customer Signature:.....

Conditions: Operations listed have been performed to my entire satisfaction without any labour charges. Only consumables were charged.

agriculture horticulture sericulture plantations forestry garden health care

WARRANTY AND FREE SERVICE COUPON

AGRIMART MEGA™

FARM EQUIPMENT | GREEN CARE | SERVICES



Do's & Don'ts

- Always read the instruction manual supplied along with the equipments and understand the correct installation and operating procedures before attempting to use the equipments.
- It is important to use the personal protection equipments such as head helmet with visor, ear defenders, goggles, safety gloves, cut resistant shoes, trousers and jackets while operating potentially dangerous machines.
- Avoid untrained persons using the equipments. Children must not be allowed to handle these equipments.
- Always use genuine spares and accessories in repairs and usage to derive maximum life of the equipments.
- Always keep the equipments in good working condition to minimize loss of output as well as to reduce the pollution and save the environment.
- Do not use the machine within range of persons unless they wear protective clothing.
- Do not operate the machine when fatigued or under the influence of alcohol or drugs.
- For more query kindly contact for our Service Center/Dealer/ franchise



Small and Timely Maintenance - Big Savings

MULTIPLY PROFITS

WITH OUR MULTI CROP, MULTI PURPOSE EQUIPMENTS



Maximum Power - Super Economy
RANGE OF PRODUCTS



BATTERY /
MANUAL
SPRAYER



PORTABLE
POWER
SPRAYER



KNAPSACK
POWER
SPRAYER



ROTARY
TILLER



CHAFF
CUTTER



TEA
PRUNER



FOGGER



POWER
WEEDER



CHAINSAW



ROTARY
TILLER



LAWN
MOWER



HIGH
PRESSURE
WASHER



EARTH
AUGER



RIDE ON
MOWER



our power, your passion
RANGE OF PRODUCTS



Advanced Technology

Advanced Technology

RANGE OF PRODUCTS



BRUSH CUTTER
- PUSH TYPE



BRUSH CUTTER -
BACK PACK



BRUSH CUTTER -
MULTI TOOL



POLE PRUNER



BLOWER
BACK PACK



LAWN MOWER



BRUSH
CUTTER



BACK PACK
BC



TILLER



FOGGER



EARTH
AUGER



Green Panther®

RANGE OF PRODUCTS

OUR RETAIL FORMATS



IMPORTERS & MARKETING BY:

Ratnagiri Impex Pvt. Ltd.

Annapurna House, # 1/1G,

7th Cross New Guddadahalli,

Mysore Road Bangalore - 560 026, India

Ph: 080-26985100/1/2

Email: info@ratnagiriimpex.com



TOLL FREE :
1800-425-3036

www.ratnagiriimpex.com

www.agrimart.in



**ratnagiri
impex**

BRINGING YOU THE FUTURE... NOW

An ISO 9001:2015 Certified Company

agriculture | horticulture | sericulture | plantations | forestry | garden | health care