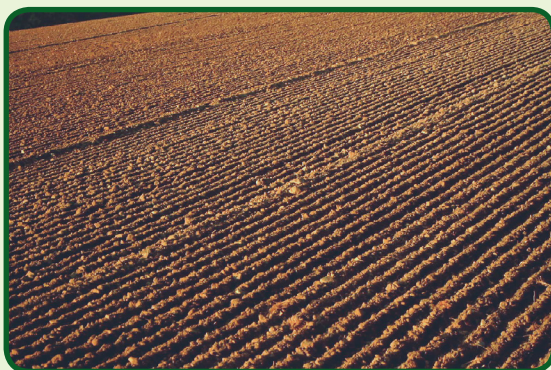


# AGRIMATE ROTARY WEEDER / SLASHER (POWER WEEDER) AM MPT-1100-6D



## TECHNICAL SPECIFICATIONS

### ENGINE SPECIFICATIONS

Engine Model	AM178F
Type	Single Cylinder, Vertical, Diesel Engine-4S, Air Cooled
Starting	recoil start
Fuel	Diesel
Engine Oil Capacity (Litre)	1.1
Capacity of Fuel tank (Litre)	3.5
Valve	OHV
Rated Power-kw/HP/RPM	4kw/5.4hp/3600
Displacement (cubic capacity), (cm <sup>3</sup> )	296cm <sup>3</sup>
Bore/Stroke (MM)	78x62 MM
Max. speed at no load (High Idling Speed)	3680
Rated speed (RPM)	3600
Low idling speed (RPM)	1400
Speed at maximum torque (RPM)	2880
Air Cleaner	Oil bath
Engine Weight	33 KG

### TRANSMISSION SPECIFICATION

Weeding-Width	1100MM/44"
Weeding - depth	150-300MM/6"-12"
Gear Shifting	4 Forward+2 Reverse-6 Speed, 6 Gears
Grade of oil	SAE-15W-30
Gear Box Oil capacity (Litre)	1.8L
Wheel Distance(MM)	500
Productivity(mu/h)	0.8-1.5
Weight with Accessories with Engine	145KG

IMPORTERS & DISTRIBUTORS  
**Ratnagiri Impex Pvt. Ltd.,**  
 Annapurna House, # 1/1G, 7th Cross, New Guddadahalli,  
 Mysore Road, Bangalore -560 026, INDIA  
 Ph: 080-26985100/1/2. Fax: 080-26751658  
 Email: info@ratnagiriimpex.com | www.ratnagiriimpex.com



Marketed by  

**ratnagiri impex**  
 BRINGING YOU THE FUTURE... NOW