

INTERCULTIVATOR / POWER WEEDER

AM-186FB- 9D ENGINE DIAGRAM

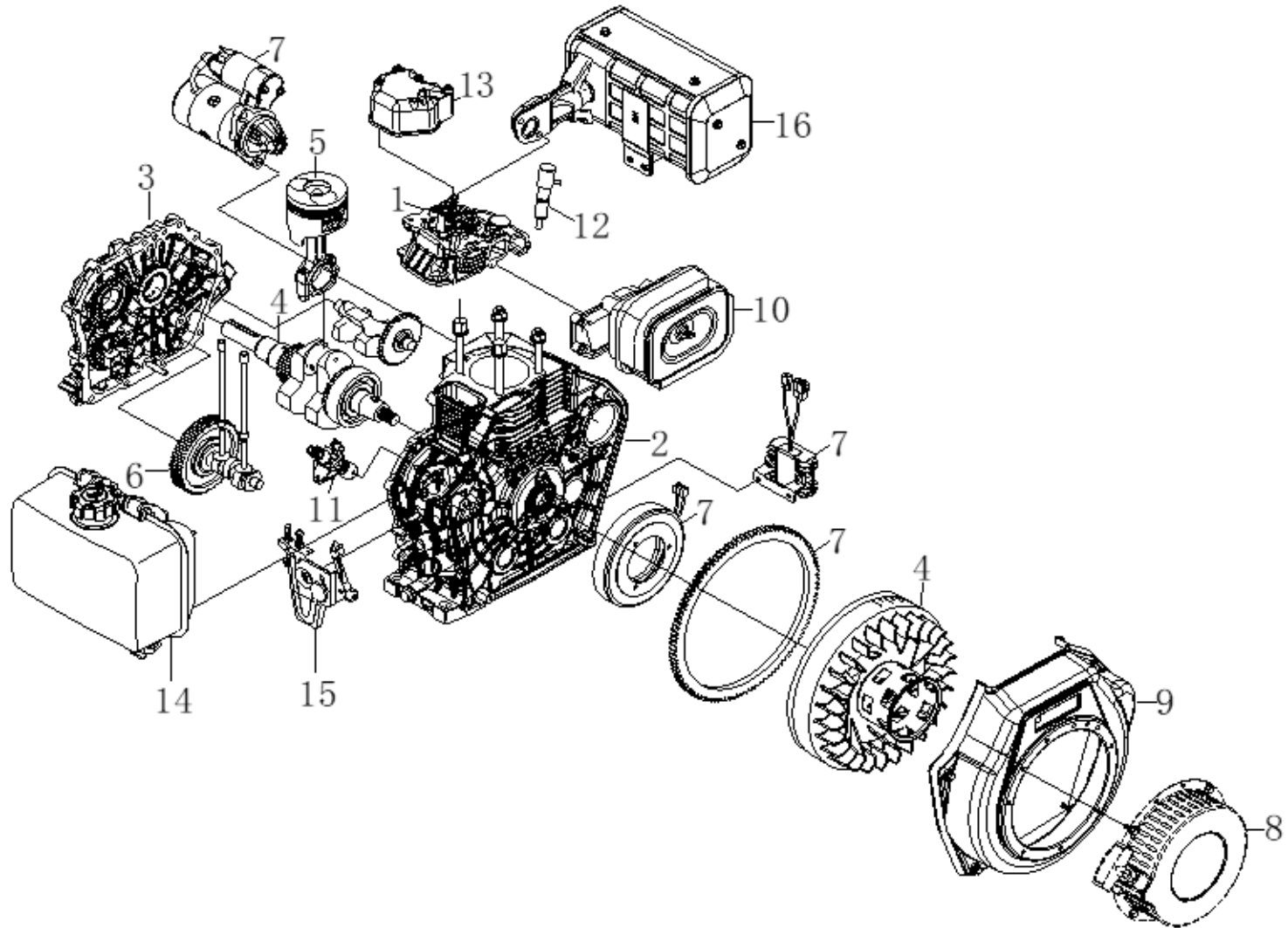
MANUAL START

ELECTRIC START



ENGINE DIAGRAM & PART LIST OF 9D - AM-186FD

ENGINE ASSY - A

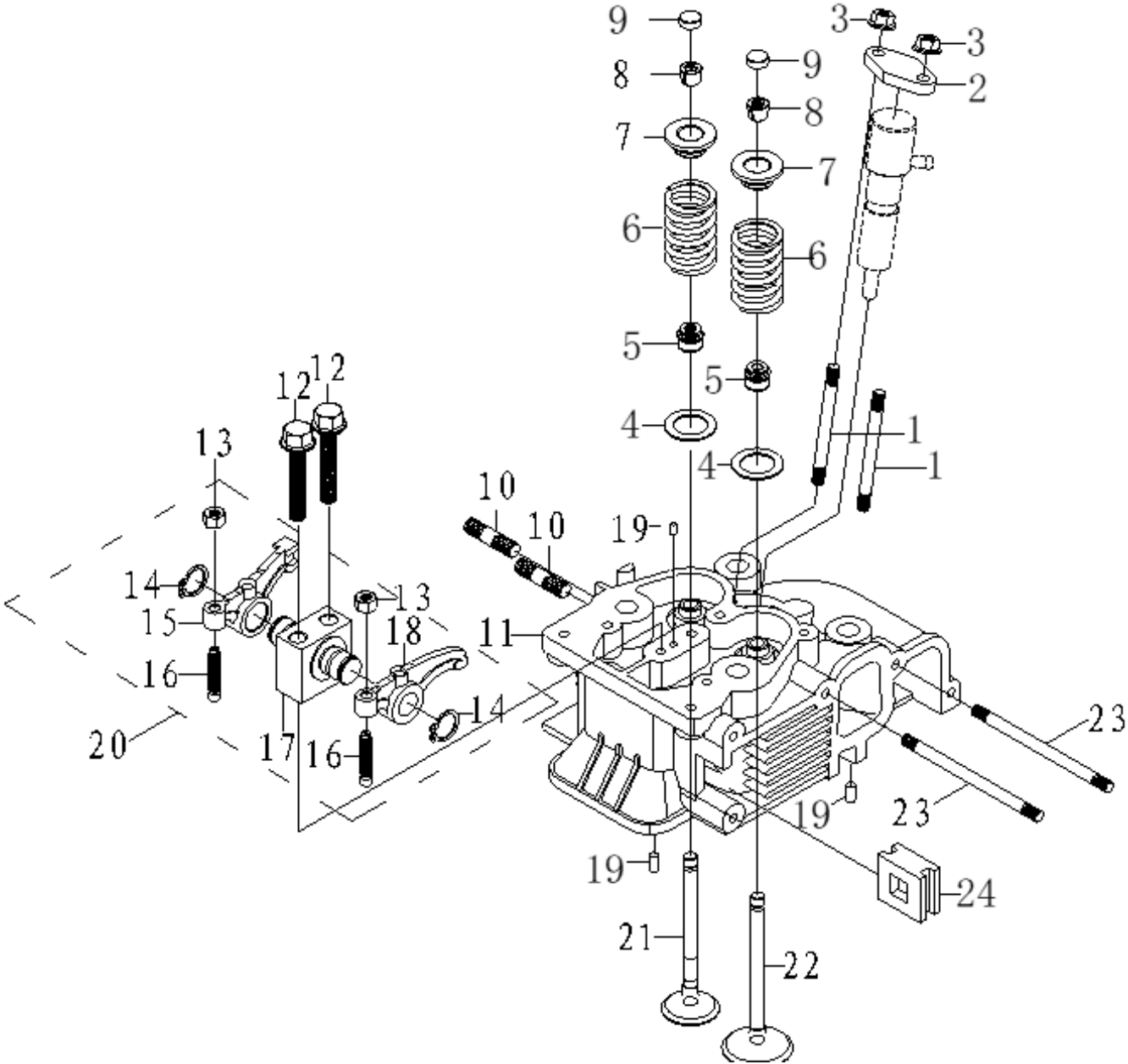


ENGINE DIAGRAM & PART LIST OF 9D - AM-186FD

SL NO	PART NO	DESCRIPTION	SL NO	PART NO	DESCRIPTION
1	AM-186FD-A01	Cylinder Head Assy			
2	AM-186FD-A02	Crank case asy			
3	AM-186FD-A03	Crank case cover Assy			
4	AM-186FD-A04	Crank-Fly Wheel Assy			
5	AM-186FD-A05	Piston-Connecting Rod Assy			
6	AM-186FD-A06	Camshaft Assy			
7	AM-186FD-A07	Flywheel And Generator Assy			
8	AM-186FD-A08	Start Cover Assy			
9	AM-186FD-A09	Wind scooper Assy			
10	AM-186FD-A10	Inlet Assy			
11	AM-186FD-A11	Oil Pump Assy			
12	AM-186FD-A12	Fuel Injection Assy			
13	AM-186FD-A13	Bonnet Assy			
14	AM-186FD-A14	Fuel Oil Assy			
15	AM-186FD-A15	Throttle Control Assy			
16	AM-186FD-A16	Exhaust Assy			

ENGINE DIAGRAM & PART LIST OF 9D - AM-186FD

CYLINDER HEAD ASSY - B

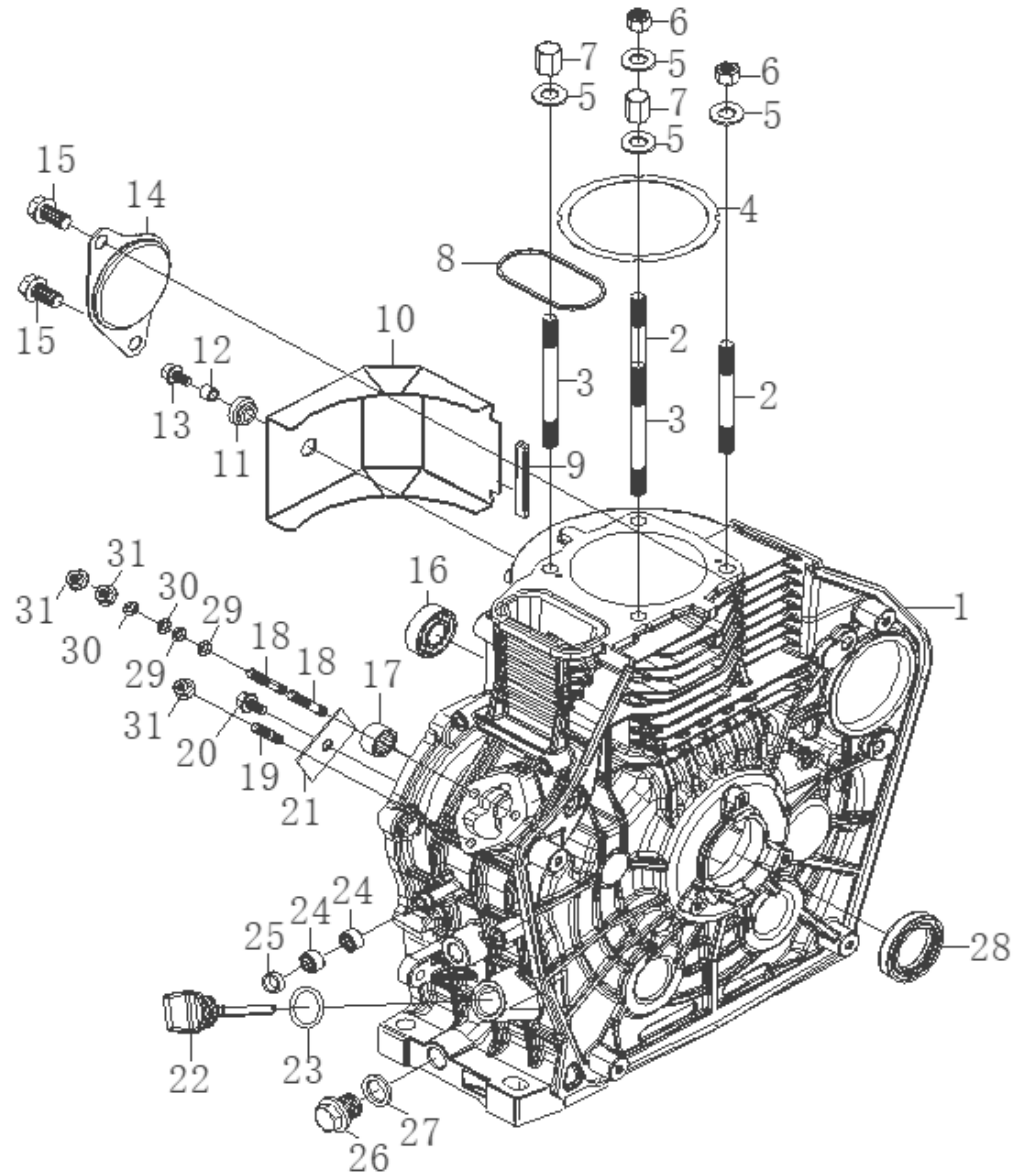


ENGINE DIAGRAM & PART LIST OF 9D - AM-186FD

SL NO	PART NO	DESCRIPTION	SL NO	PART NO	DESCRIPTION
1	AM-186FD-B01	Bolt Stud	17	AM-186FD-B17	Rock Arm Seat
2	AM-186FD-B02	Fuel Injection Clamp	18	AM-186FD-B18	Valve Rock Arm Inlet
3	AM-186FD-B03	Flange Nut	19	AM-186FD-B19	Lock Pin
4	AM-186FD-B04	Valve Spring Washer	20	AM-186FD-B20	Rock Arm Assy
5	AM-186FD-B05	Valve Seal	21	AM-186FD-B21	Valve Exhaust Side
6	AM-186FD-B06	Spring Valve	22	AM-186FD-B22	Valve Inlet Side
7	AM-186FD-B07	Valve Spring Seat Assy	23	AM-186FD-B23	Bolt Stud
8	AM-186FD-B08	Cotter	23.1	AM-186FD-B23.1	Bolt Stud
9	AM-186FD-B09	Valve Adjusting Plate	24	AM-186FD-B24	Block, Cylinder Head.
10	AM-186FD-A10	Bolt Stud,			
11	AM-186FD-B11	Cylinder Head Assy			
12	AM-186FD-B12	Flange Bolt			
13	AM-186FD-B13	Lock Nut			
14	AM-186FD-B14	Clip Piston Pin			
15	AM-186FD-B15	Valve Rock Arm Exhaust			
16	AM-186FD-B16	Valve Screw			

ENGINE DIAGRAM & PART LIST OF 9D - AM-186FD

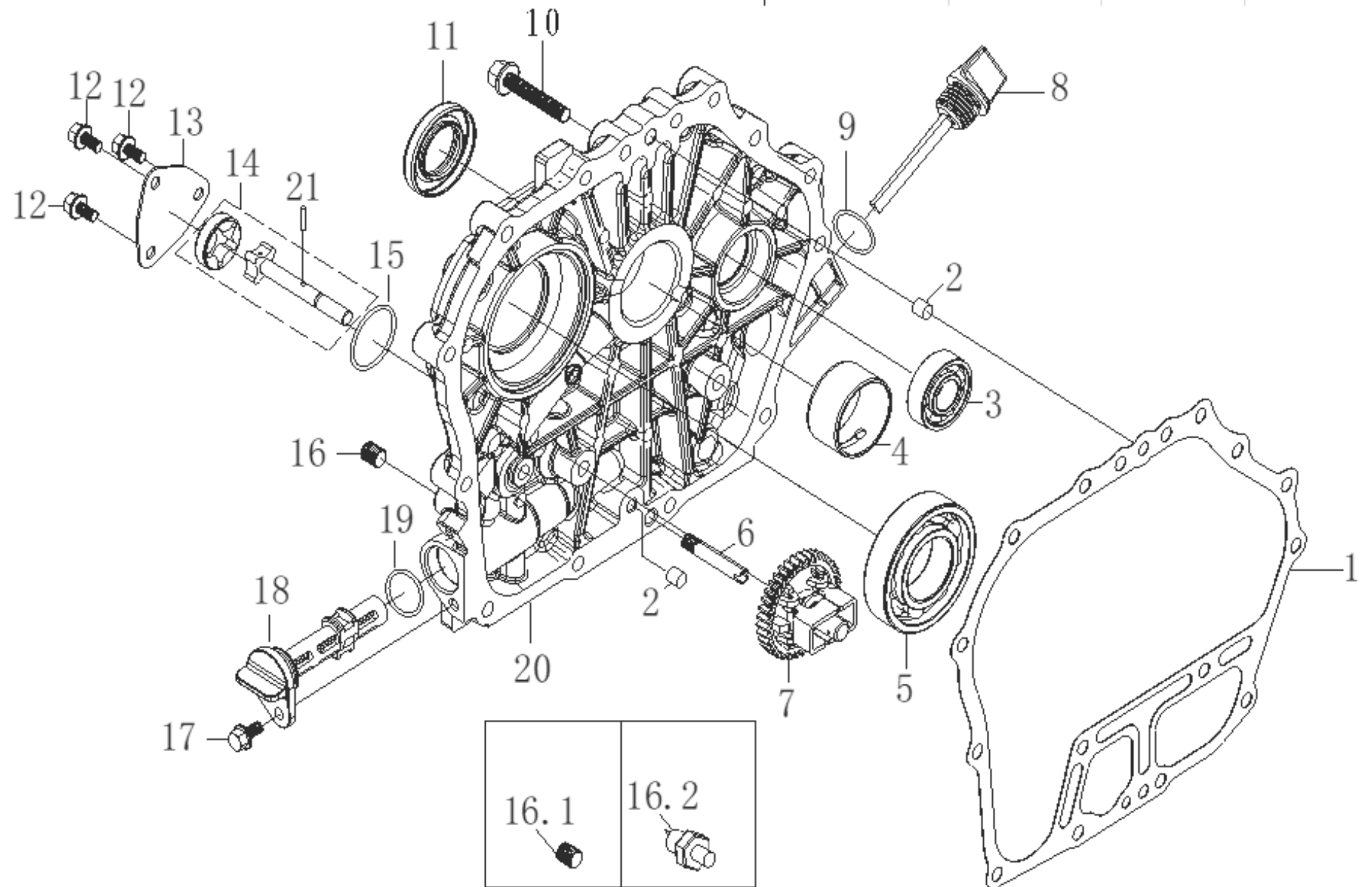
CRANK CASE ASSY - C



ENGINE DIAGRAM & PART LIST OF 9D - AM-186FD

SL NO	PART NO	DESCRIPTION	SL NO	PART NO	DESCRIPTION
1	AM-186FD-C01	Crankcase	17	AM-186FD-C17	Needle Bearing
2	AM-186FD-C02	Cylinder Head Stud	18	AM-186FD-C18	Bolt Stud
3	AM-186FD-C03	Cylinder Head Stud	19	AM-186FD-C19	Bolt Stud
4	AM-186FD-C04	Cylinder Head gasket, Copper	20	AM-186FD-C20	Bolt
5	AM-186FD-C05	Washer	21	AM-186FD-C21	Retainer
6	AM-186FD-C06	Nut,Cylinder Head	22	AM-186FD-C22	Oil Dipstick
7	AM-186FD-C07	Nut,Cylinder Head Thick	23	AM-186FD-C23	O-Ring
8	AM-186FD-C08	Rectangle Seal Ring	24	AM-186FD-C24	Needle Bearing
9	AM-186FD-C09	Cooling Guide Plate gasket, Plastic	25	AM-186FD-C25	Oil Seal
10	AM-186FD-C10	Wind Guide Plate	26	AM-186FD-C26	Drain Plug
11	AM-186FD-C11	Vibration Isolator,Cooling Guide Plate	27	AM-186FD-C27	Oil Plug Seal
12	AM-186FD-C12	Lining	28	AM-186FD-C28	Oil Seal
13	AM-186FD-C13	Flange Bolt	29	AM-186FD-C29	Washer
14	AM-186FD-C14	Starter Mounting Cover	30	AM-186FD-C30	Spring Washer
15	AM-186FD-C15	Flange Bolt	31	AM-186FD-C31	Flange Nut
16	AM-186FD-C16	Ball Bearing			

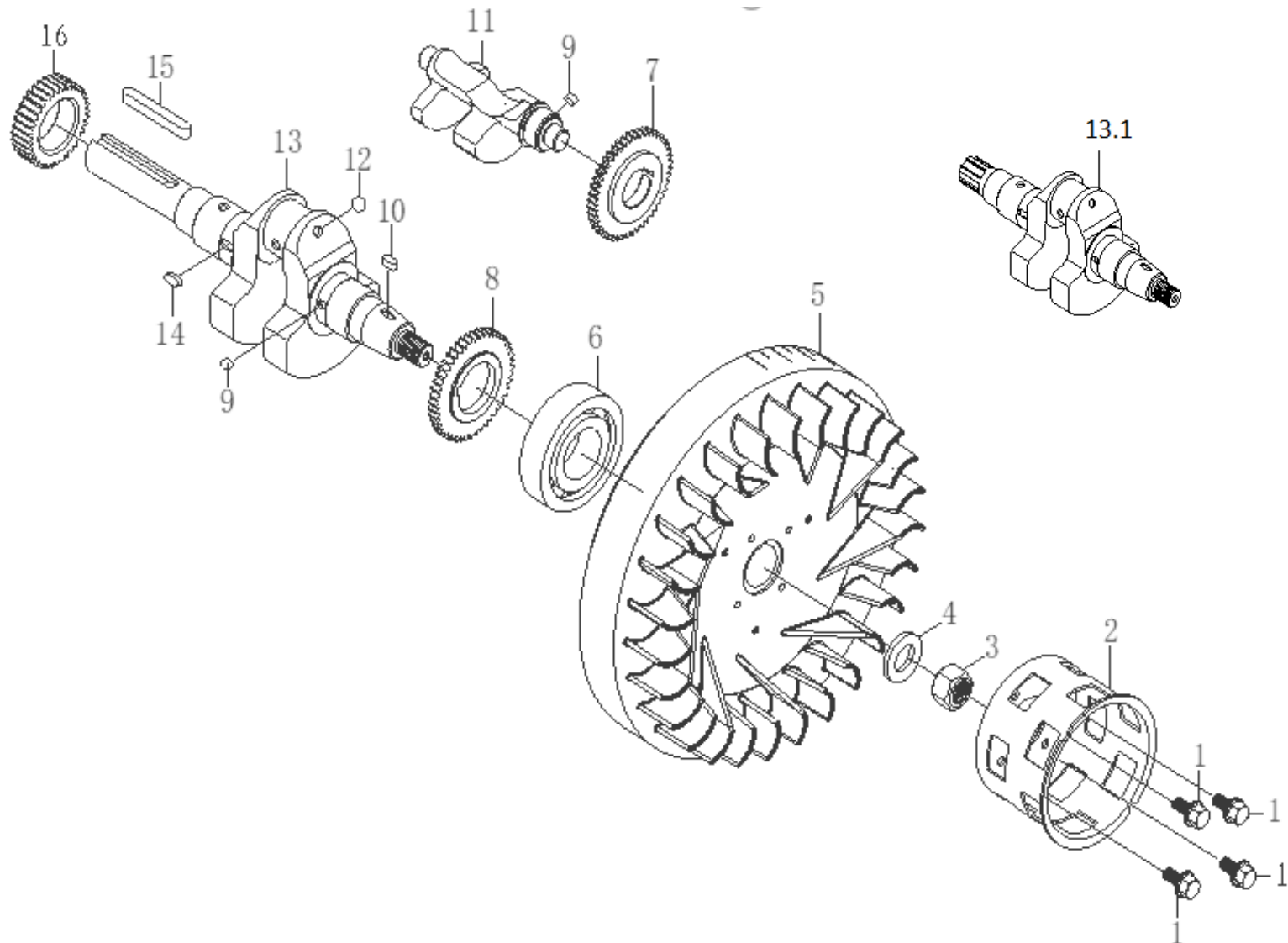
CRANK CASE COVER ASSY - D



ENGINE DIAGRAM & PART LIST OF 9D - AM-186FD

SL NO	PART NO	DESCRIPTION	SL NO	PART NO	DESCRIPTION
1	AM-186FD-D01	Gasket Crankcase Cover	16.2	AM-186FD-D16.2	Oil Pressure Sensor
2	AM-186FD-D02	Pin	17	AM-186FD-D17	Flange Bolt
3	AM-186FD-D03	Bearing	18	AM-186FD-D18	Engine Oil Filter Element
4	AM-186FD-D04	Crankshaft Bushing	19	AM-186FD-D19	Seal Ring
5	AM-186FD-D05	Ball Bearing	20	AM-186FD-D20	Cover, Crakcase
6	AM-186FD-D06	Oil Duct	21	AM-186FD-D21	Pin
7	AM-186FD-D07	Governor Gear Comp			
8	AM-186FD-D08	Oil Dipstick			
9	AM-186FD-D09	O-Ring			
10	AM-186FD-D10	Flange Bolt			
11	AM-186FD-D11	Oil Seal			
12	AM-186FD-D12	Flange Bolt			
13	AM-186FD-D13	Oil Pump Cover			
14	AM-186FD-D14	Oil Pump Assy			
15	AM-186FD-D15	Sealing Ring			
16.1	AM-186FD-D16	Block Bolt			

CRANK FLY WHEEL ASSY- E

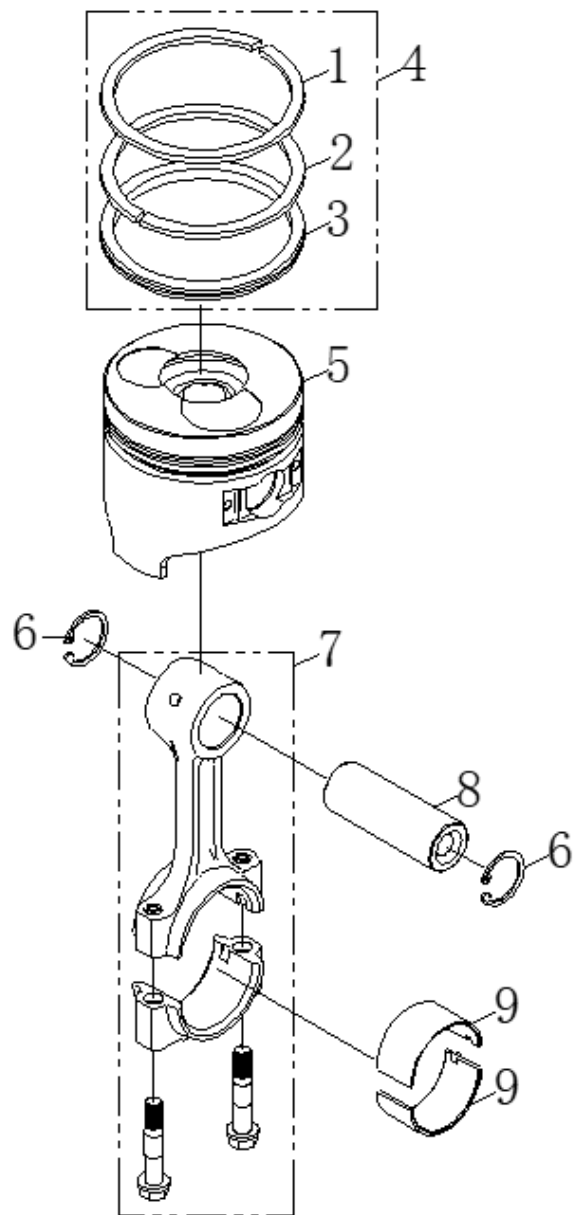


ENGINE DIAGRAM & PART LIST OF 9D - AM-186FD

SL NO	PART NO	DESCRIPTION	SL NO	PART NO	DESCRIPTION
1	AM-186FD-E01	Flange Bolt	16	AM-186FD-E16	Crankshaft Timing Gear
2	AM-186FD-E02	Starter Pulley			
3	AM-186FD-E03	Flange Nut			
4	AM-186FD-E04	Washer			
5	AM-186FD-E05	Fly Wheel			
6	AM-186FD-E06	Ball Bearing			
7	AM-186FD-E07	Timing Gear Of Balance Shaft			
8	AM-186FD-E08	Drive Gear Of Balance Shsft			
9	AM-186FD-E09	Key			
10	AM-186FD-E10	Key			
11	AM-186FD-E11	Balancer Shaft			
12	AM-186FD-E12	Steel Ball			
13	AM-186FDB-E13	Crank Shaft Assy			
13.1	AM-186FD-E13.1	Crank Shaft Assy			
14	AM-186FD-E14	Key			
15	AM-186FD-E15	Key			

ENGINE DIAGRAM & PART LIST OF 9D - AM-186FD

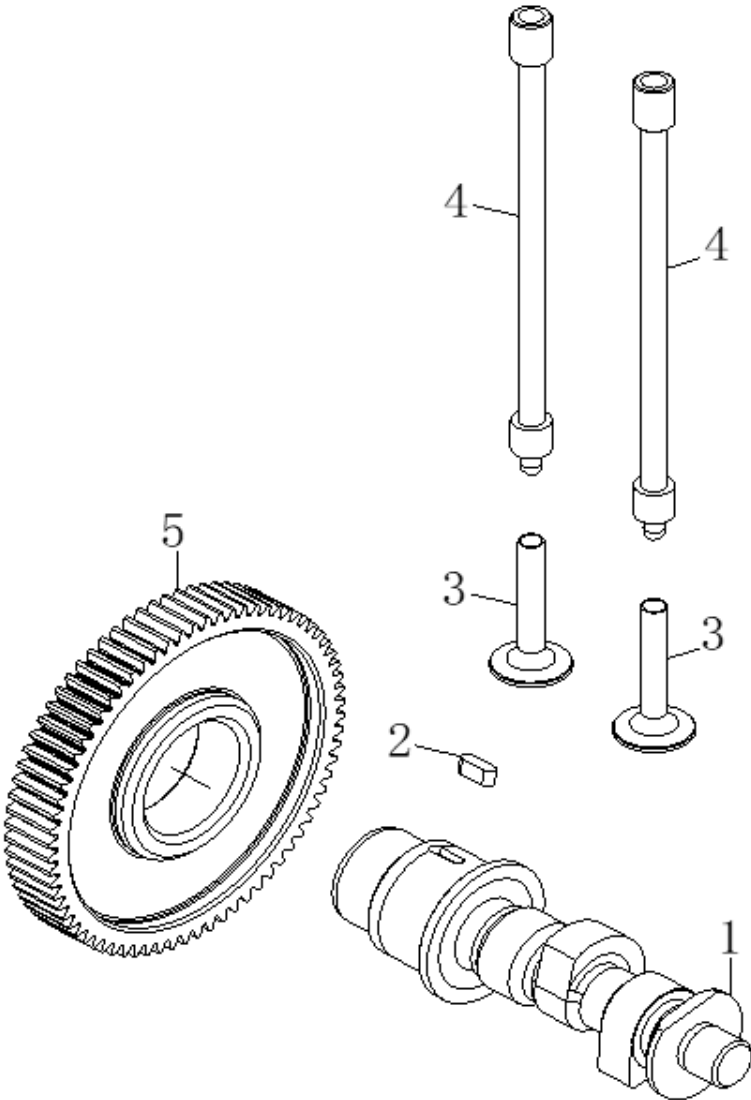
PISTON CONNECTING - ROD ASSY - F



SL NO	PART NO	DESCRIPTION
1	AM-186FD-F01	NA
2	AM-186FD-F02	NA
3	AM-186FD-F03	NA
4	AM-186FD-F04	Piston Ring Assy
5	AM-186FD-F05	Piston
6	AM-186FD-F06	Clip Piston Pin
7	AM-186FD-F07	Connecting Rod Assy
8	AM-186FD-F08	Pin Piston
9	AM-186FD-F09	Bushing, Connect Rod

ENGINE DIAGRAM & PART LIST OF 9D - AM-186FD

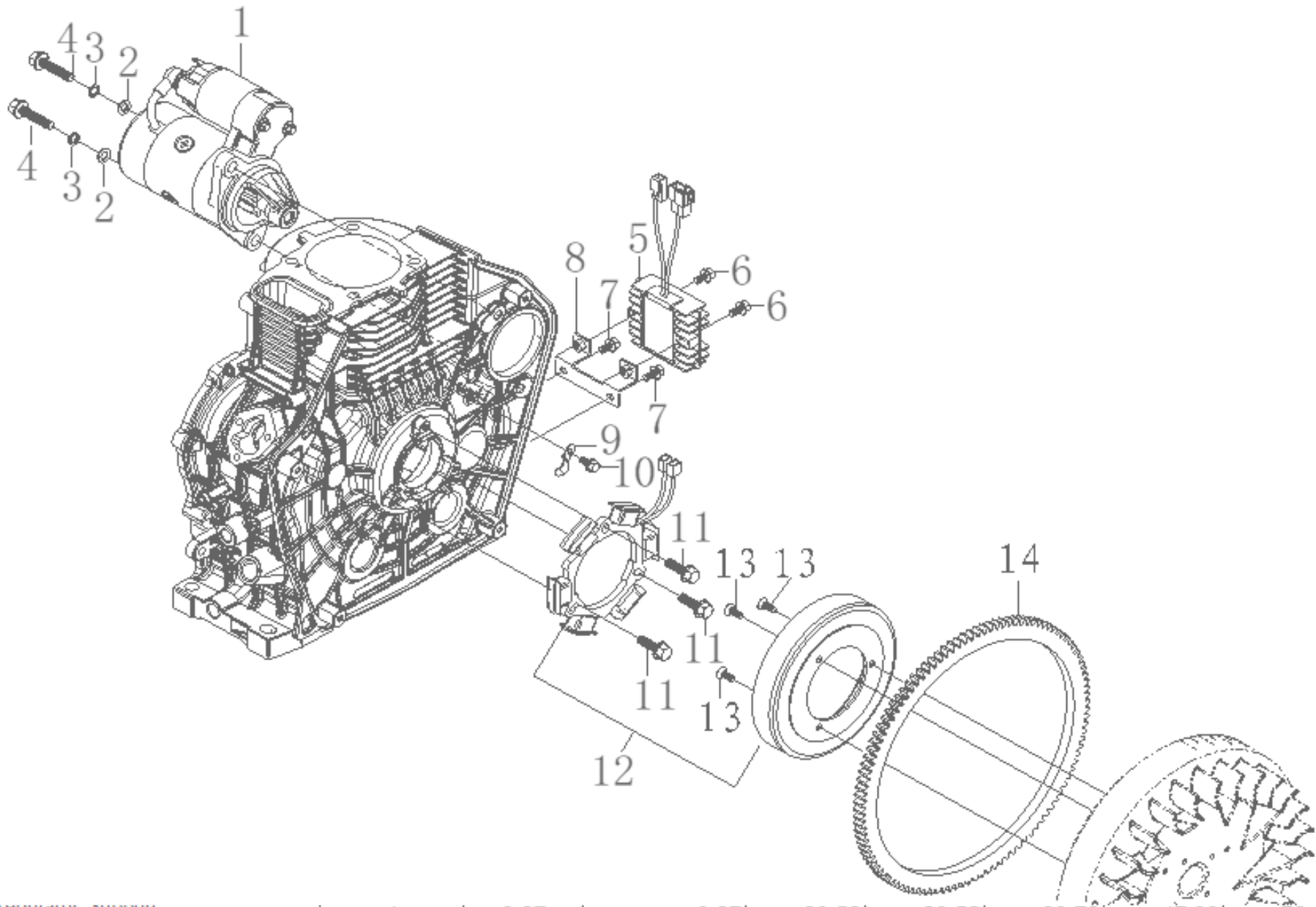
CAMSHAFT ASSY - G



SL NO	PART NO	DESCRIPTION
1	AM-186FD-G01	Camshaft
2	AM-186FD-G02	Flat Key
3	AM-186FD-G03	Valve Tappet
4	AM-186FD-G04	Push Rod
5	AM-186FD-G05	Camshaft Timing Gear

ENGINE DIAGRAM & PART LIST OF 9D - AM-186FD

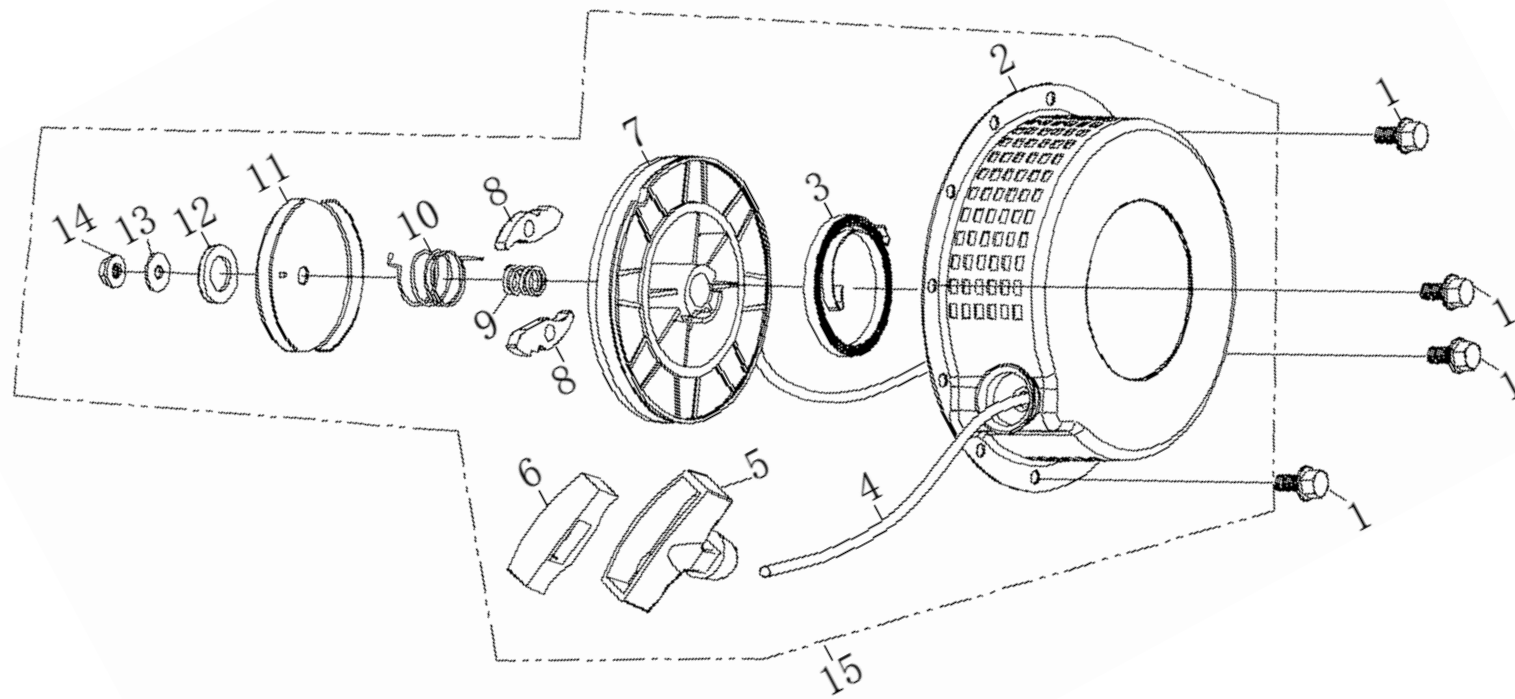
SELF STARTER ASSY - H



ENGINE DIAGRAM & PART LIST OF 9D - AM-186FD

SL NO	PART NO	DESCRIPTION	SL NO	PART NO	DESCRIPTION
1	AM-186FD-H01	Starting Motor			
2	AM-186FD-H02	Spring Washer			
3	AM-186FD-H03	Flat Washer			
4	AM-186FD-H04	Bolt			
5	AM-186FD-H05	Regulator			
6	AM-186FD-H06	Bolt			
7	AM-186FD-H07	Bolt			
8	AM-186FD-H08	Regulator Support			
9	AM-186FD-H09	Wire Press Plate			
10	AM-186FD-H10	Bolt			
11	AM-186FD-H11	Bolt			
12	AM-186FD-H12	Flywheel Alternator			
13	AM-186FD-H13	Screw			
14	AM-186FD-H14	Ring Gear,Flywheel			

STARTING COVER ASSY- J

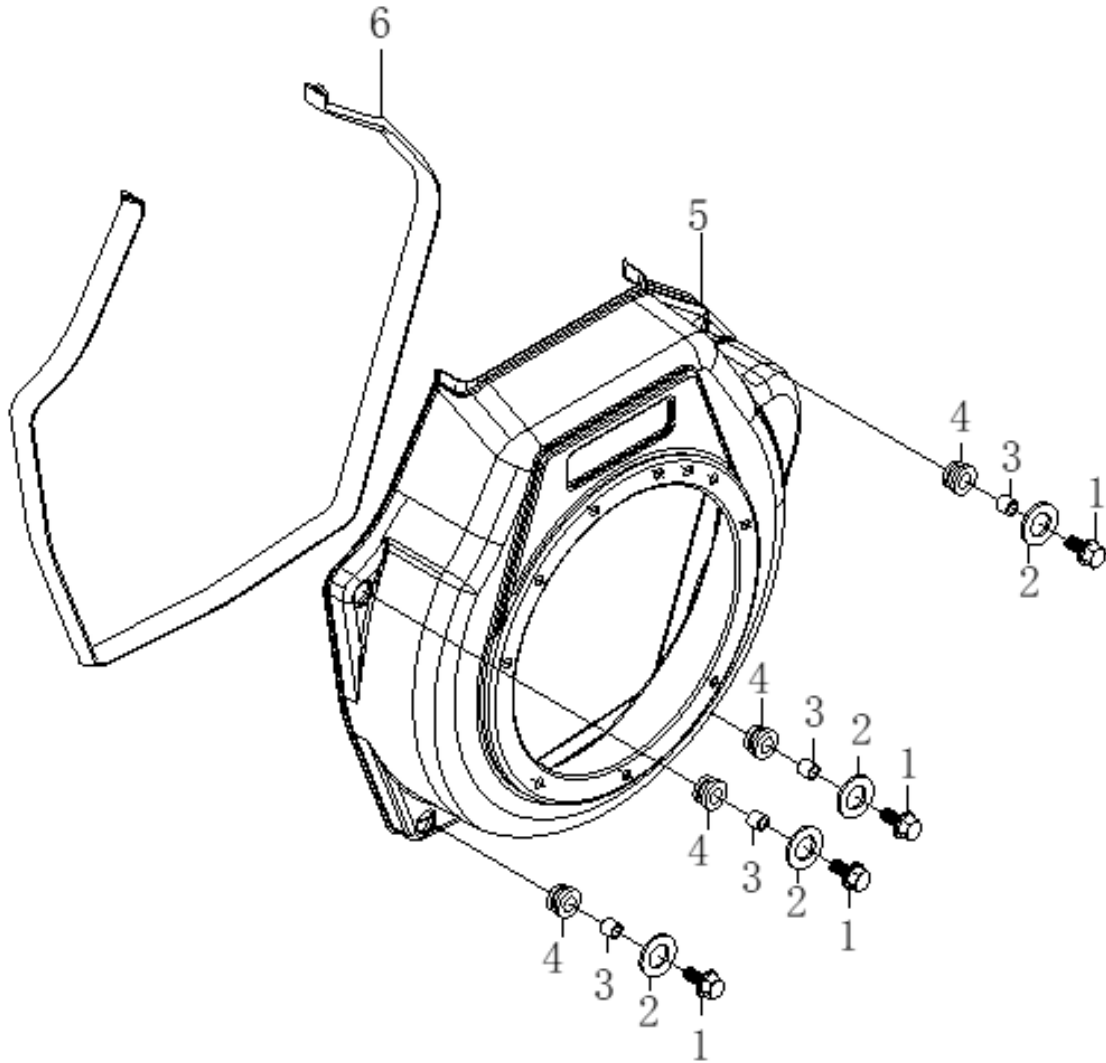


ENGINE DIAGRAM & PART LIST OF 9D - AM-186FD

SL NO	PART NO	DESCRIPTION	SL NO	PART NO	DESCRIPTION
1	AM-186FD-J01	Flange Bolt			
2	AM-186FD-J02	Stater Cover Comp Recoil			
3	AM-186FD-J03	Spiral Spring			
4	AM-186FD-J04	Rope Recoil Starter			
5	AM-186FD-J05	Handle Starter			
6	AM-186FD-J06	Cover Handle Starter			
7	AM-186FD-J07	Starter Reel			
8	AM-186FD-J08	Patchet Starter			
9	AM-186FD-J09	Compress Spring			
10	AM-186FD-J10	Spring Return			
11	AM-186FD-J11	Spring Cover			
12	AM-186FD-J12	Rubber Washer			
13	AM-186FD-J13	Washer			
14	AM-186FD-J14	Nut			
15	AM-186FD-J15	Recoil Starter Assy			

ENGINE DIAGRAM & PART LIST OF 9D - AM-186FD

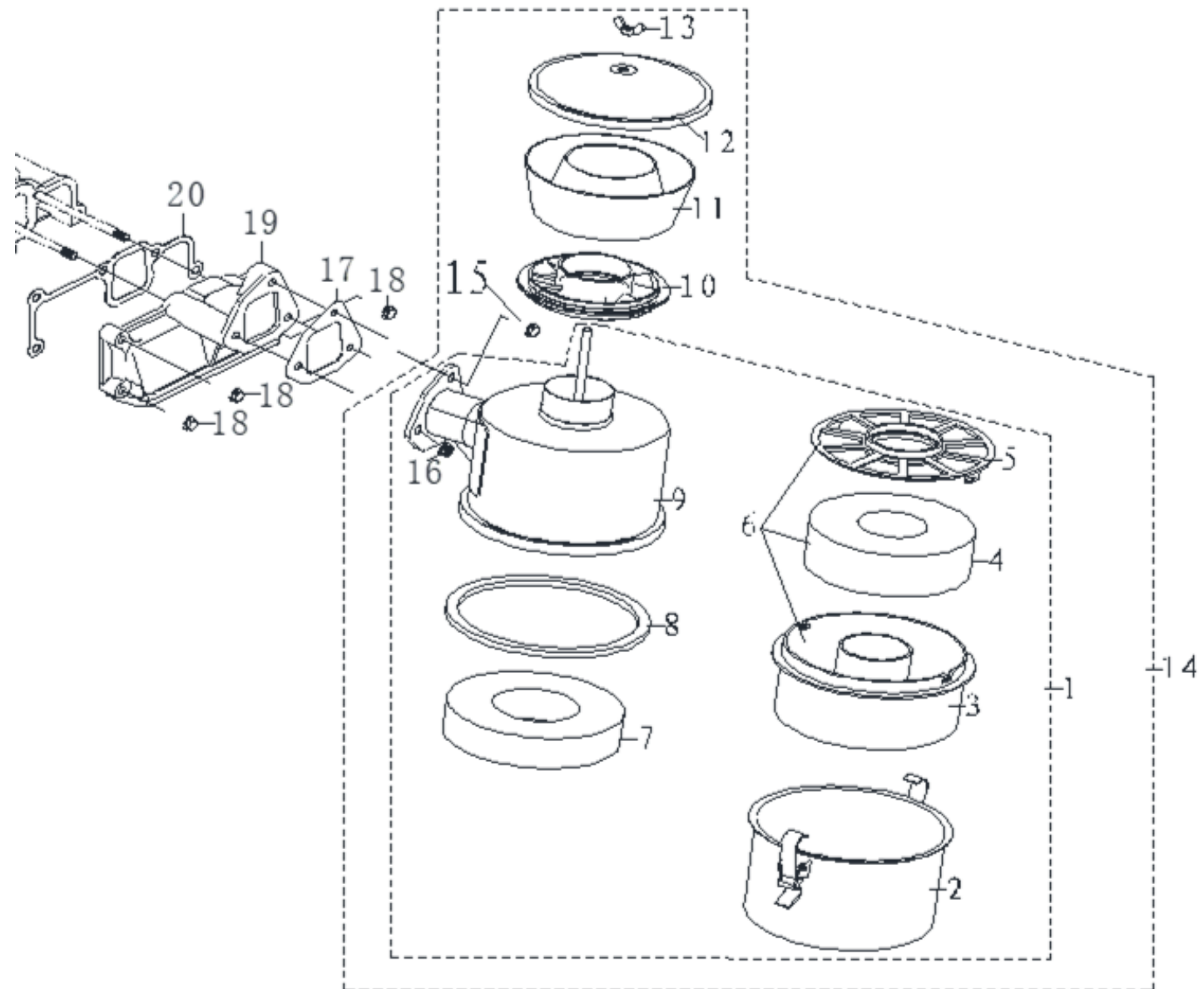
WIND SCOOPER -K



SL NO	PART NO	DESCRIPTION
1	AM-186FD-K01	Bolt
2	AM-186FD-K02	Washer
3	AM-186FD-K03	Collar
4	AM-186FD-K04	Shock Absorber
5	AM-186FD-K05	Wind Scooper Assy
6	AM-186FD-K06	Shock Absorber Seat

ENGINE DIAGRAM & PART LIST OF 9D - AM-186FD

AIR FILTER ASSY - L

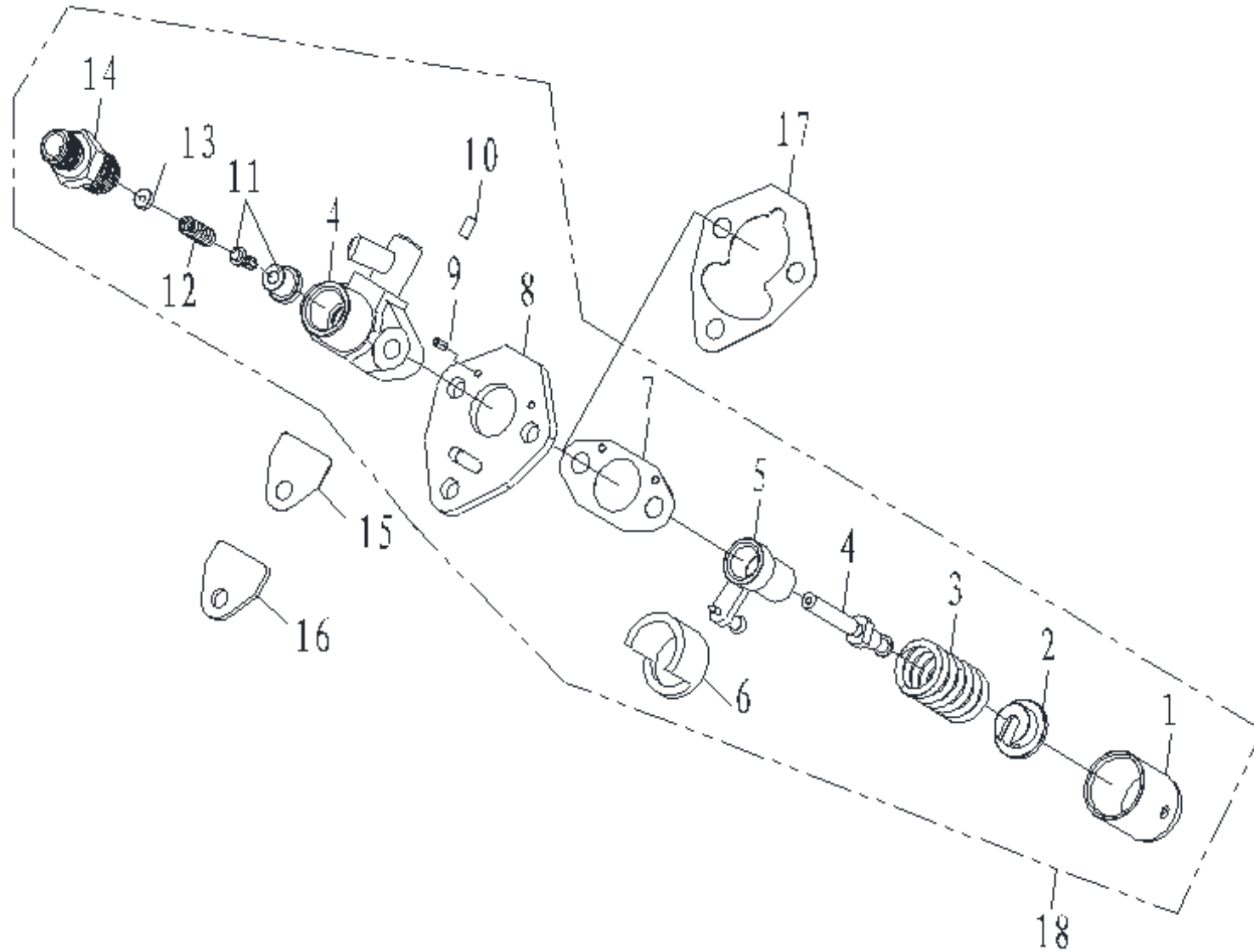


ENGINE DIAGRAM & PART LIST OF 9D - AM-186FD

SL NO	PART NO	DESCRIPTION	SL NO	PART NO	DESCRIPTION
1	AM-186FD-L01	Cyclone Air Cleaner	17	AM-186FD-L17	Air Cleaner Gasket
2	AM-186FD-L02	Air Flter Sump	18	AM-186FD-L18	Flange Bolt
3	AM-186FD-L03	Filter Case	19	AM-186FD-L19	Intake Pipe
4	AM-186FD-L04	Steel Wire Filter	20	AM-186FD-L20	Intake Pipe Gasket
5	AM-186FD-L05	Filter Case,Cover			
6	AM-186FD-L06	Air filter foam filter element			
7	AM-186FD-L07	Foam Filter			
8	AM-186FD-L08	Filter box sealing ring			
9	AM-186FD-L09	Air filter cylinder assembly			
10	AM-186FD-L10	Air Filter Connecting Disc			
11	AM-186FD-L11	Air Cleaner Blade Base			
12	AM-186FD-L12	Air Cleaner Detached Body			
13	AM-186FD-L13	Wing nut square wing			
14	AM-186FD-L14	Air filter assembly			
15	AM-186FD-L15	Flange Bolt			
16	AM-186FD-16	Flange Nut			

ENGINE DIAGRAM & PART LIST OF 9D - AM-186FD

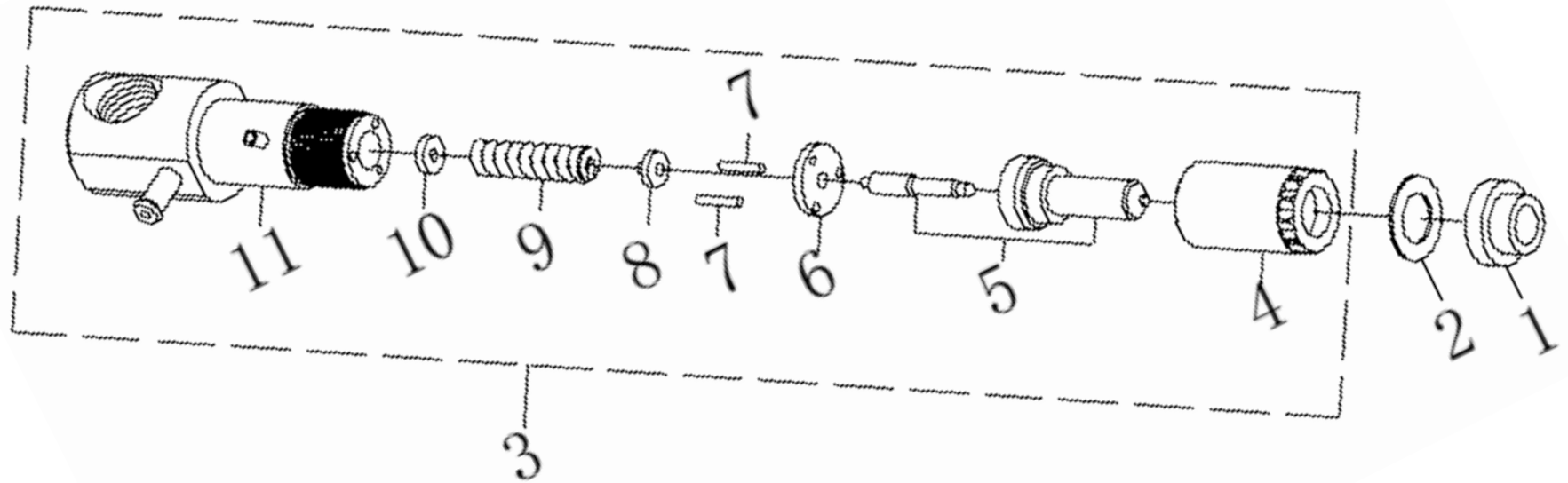
FUEL PUMP ASSY- M



ENGINE DIAGRAM & PART LIST OF 9D - AM-186FD

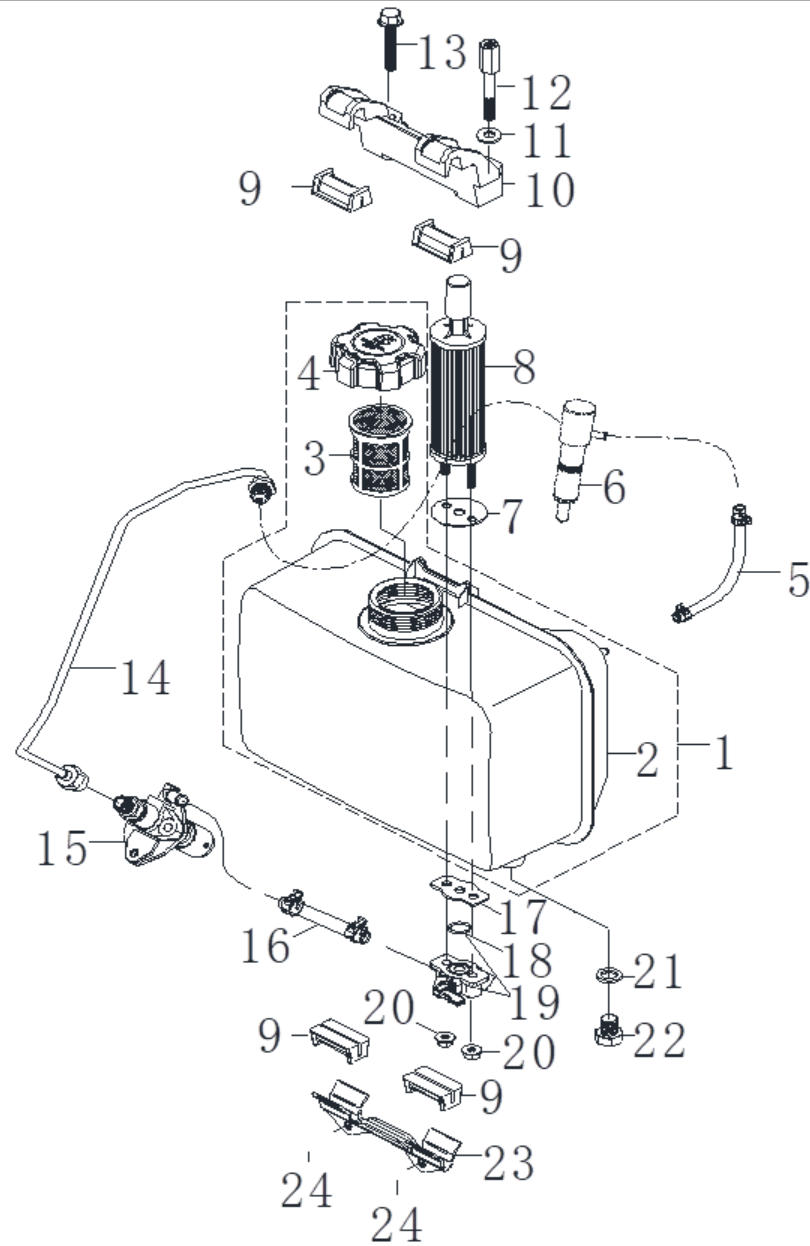
SL NO	PART NO	DESCRIPTION	SL NO	PART NO	DESCRIPTION
1	AM-186FD-M01	Tappet	17	AM-186FD-M17	Fuel Pump Gasket
2	AM-186FD-M02	Spring Holder	18	AM-186FD-M18	Fuel pump assy
3	AM-186FD-M03	Spring			
4	AM-186FD-M04	Plunger			
5	AM-186FD-M05	Fuel Limiting Sheath Weldment Assy			
6	AM-186FD-M06	Support			
7	AM-186FD-M07	Fuel Pump Gasket			
8	AM-186FD-M08	Washer			
9	AM-186FD-M09	Fip Connecting Plate			
10	AM-186FD-M10	Pin			
11	AM-186FD-M11	Oil outlet parts			
12	AM-186FD-M12	Fuel Delivery Valve Core			
13	AM-186FD-M13	Fuel Delivery Valve Seat			
14	AM-186FD-M14	Fuel Delhrery Valve forcing holder			
15	AM-186FD-M15	Fuel Delhrery Gasket			
16	AM-186FD-M16	Fuel Pump Cover			

FUEL INJECTION ASSY-N



ENGINE DIAGRAM & PART LIST OF 9D - AM-186FD

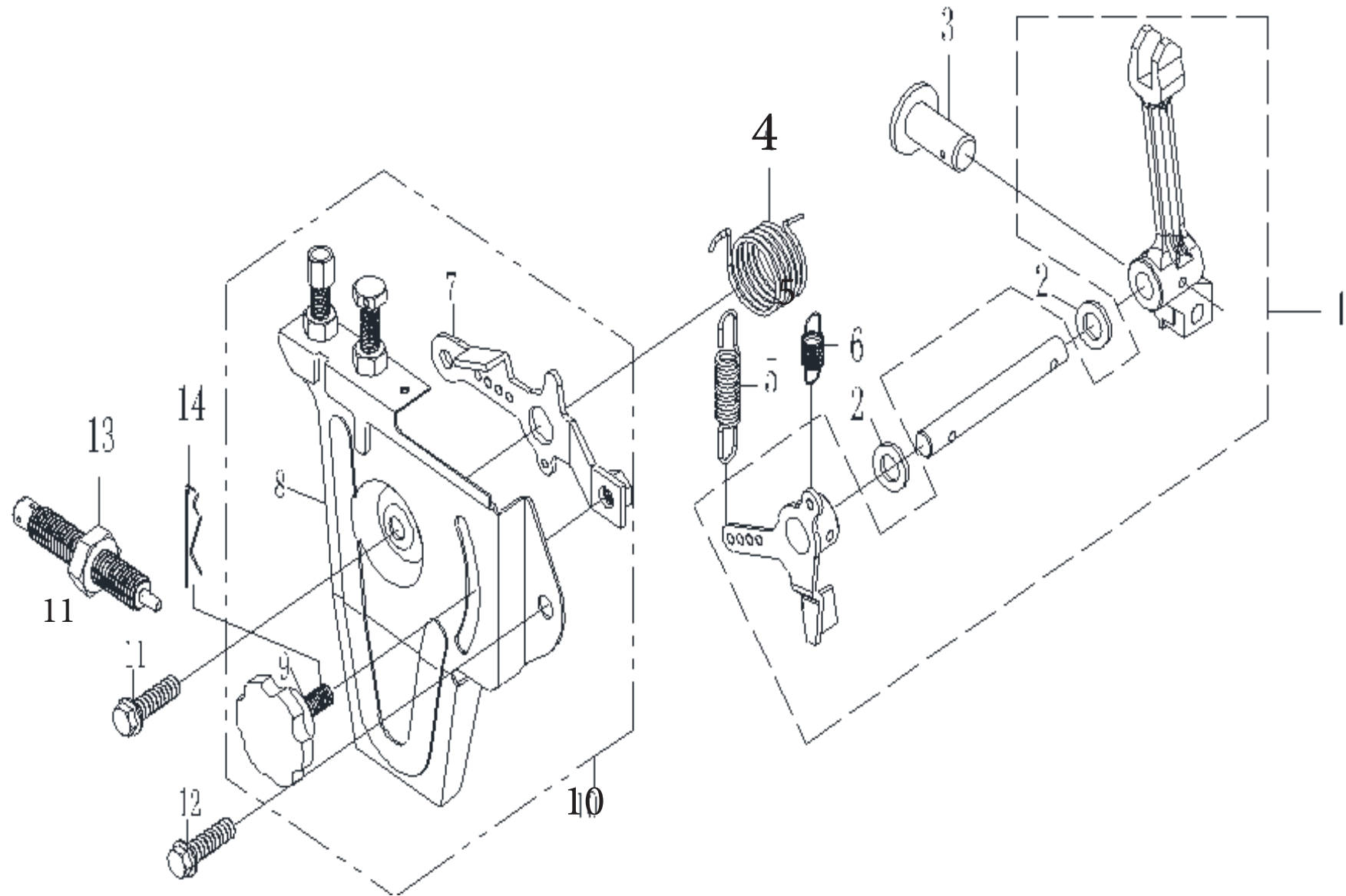
FUEL OIL ASSY - Q



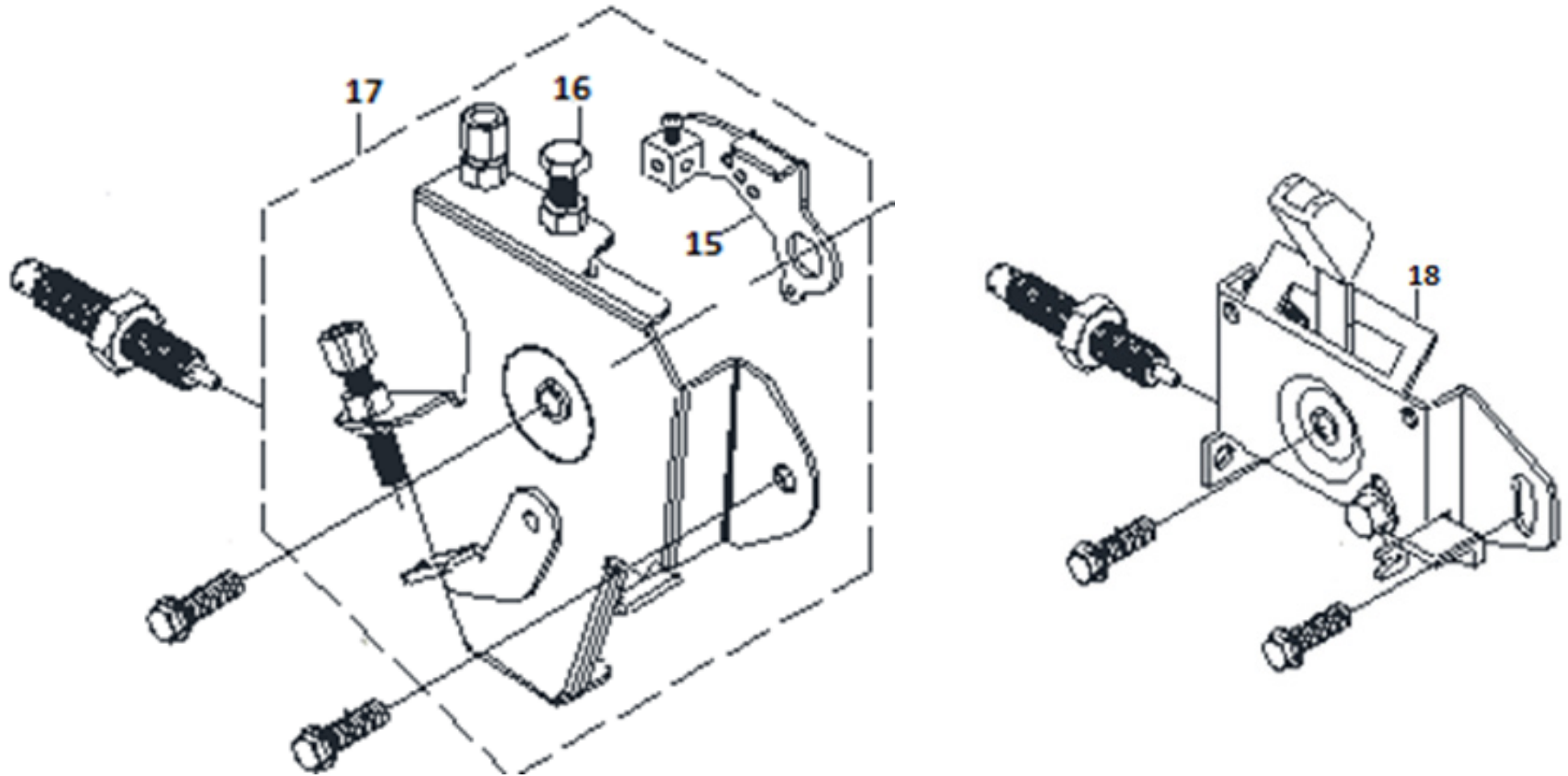
ENGINE DIAGRAM & PART LIST OF 9D - AM-186FD

SL NO	PART NO	DESCRIPTION	SL NO	PART NO	DESCRIPTION
1	AM-186FD-Q01	Fuel Tank Assy	17	AM-186FD-Q17	Fuel tank switch gasket
2	AM-186FD-Q02	Fuel Tank	18	AM-186FD-Q18	O-shaped rubber sealing ring
3	AM-186FD-Q03	Oil filler filter combination	19	AM-186FD-Q19	Fuel Tank Gock Assy
4	AM-186FD-Q04	Fuel tank cap combination	20	AM-186FD-Q20	Flange Nut
5	AM-186FD-Q05	Fuel return pipe assembly	21	AM-186FD-Q21	Fuel Tank Plug Seat
6	AM-186FD-Q06	NA	22	AM-186FD-Q22	Fule tank drain Plug
7	AM-186FD-Q07	Gasket	23	AM-186FD-Q23	Lower Stay Assy
8	AM-186FD-Q08	Fuel filter assembly	24	AM-186FD-Q24	Flange Bolt
9	AM-186FD-Q09	Fuel Tank Damper	25	AM-186FD-Q25	NA
10	AM-186FD-Q10	Upper Stay	26	AM-186FD-Q26	NA
11	AM-186FD-Q11	Washer	27	AM-186FD-Q27	NA
12	AM-186FD-Q12	Upper Stay Bolt	28	AM-186FD-Q28	NA
13	AM-186FD-Q13	Bolt			
14	AM-186FD-Q14	Fuel Injection Pipe Assy			
15	AM-186FD-Q15	NA			
16	AM-186FD-Q16	Oil Pipe			

THROTTLE CONTROL ASSY - R



THROTTLE CONTROL ASSY - R

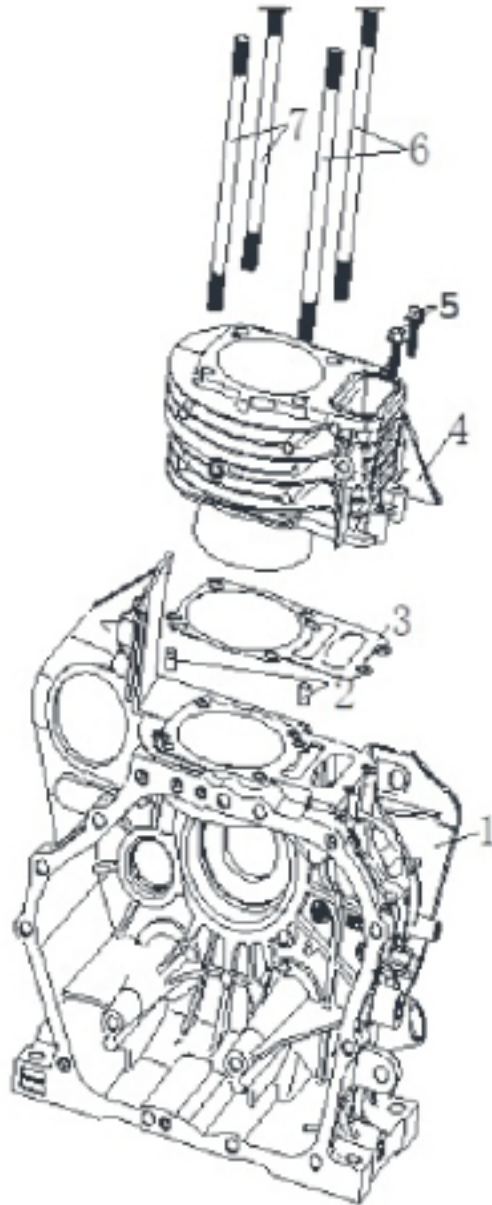


ENGINE DIAGRAM & PART LIST OF 9D - AM-186FD

SL NO	PART NO	DESCRIPTION	SL NO	PART NO	DESCRIPTION
1	AM-186FD-R01	Lever Fork	17	AM-186FD-R17	control panel
2	AM-186FD-R02	Adjusting Washer	18	AM-186FD-R18	Control Panel
3	AM-186FD-R03	Speed control cap			
4	AM-186FD-R04	Reset Spring			
5	AM-186FD-R05	Governor Spring			
6	AM-186FD-R06	Fine Tuning Spring			
7	AM-186FD-R07	Speed control arm			
8	AM-186FD-R08	Speed control panel			
9	AM-186FD-R09	Control Panel			
10	AM-186FD-R10	Control Panel Assy			
11	AM-186FD-R11	Flange Bolt			
12	AM-186FD-R12	Flange Bolt			
13	AM-186FD-R13	Control Lever Assy			
14	AM-186FD-R14	Adjusting Rod Clip			
15	AM-186FD-R15	speed control arm			
16	AM-186FD-R16	Speed control Panel			

ENGINE DIAGRAM & PART LIST OF 9D - AM-186FD






SPLIT CRANK CASE - T



SL NO	PART NO	DESCRIPTION
1	AM-186FD-T01	Crankcase Electric Start_Split Type
2	AM-186FD-T02	Cylindrical pin
3	AM-186FD-T03	Cylinder block gasket
4	AM-186FD-T04	Cylinder block
5	AM-186FD-T05	Small series of hexagonal flange bolts
6	AM-186FD-T06	Cylinder head stud bolt
7	AM-186FD-T07	Cylinder head stud bolt






WARRANTY CARD

CUSTOMER COPY

DATE _____	DATE OF DELIVERY _____	DEALERS OFFICIAL SEAL	DEALERS SIGN _____
PURCHASERS NAME & ADDRESS _____ _____	 CUSTOMER SIGN		
PRODUCT NAME	PRODUCT SERIAL NO.	INVOICE/DN NO.	
			






I/Will accept the terms and conditions of warranty as in the warranty card

DEALERS COPY

DATE _____	DATE OF DELIVERY _____	DEALERS OFFICIAL SEAL	DEALERS SIGN _____
PURCHASERS NAME & ADDRESS _____ _____	 CUSTOMER SIGN		
PRODUCT NAME	PRODUCT SERIAL NO.	INVOICE/DN NO.	
			

I/Will accept the terms and conditions of warranty as in the warranty card

COMPANY COPY

DATE _____	DATE OF DELIVERY _____	DEALERS OFFICIAL SEAL	DEALERS SIGN _____
PURCHASERS NAME & ADDRESS _____ _____	 CUSTOMER SIGN		
PRODUCT NAME	PRODUCT SERIAL NO.	INVOICE/DN NO.	
			

I/Will accept the terms and conditions of warranty as in the warranty card

1. LIMITED WARRANTY PERIOD : For a period of six months from the date of Sale / delivery of the product which ever is earlier. 2. LIMITED WARRANTY OBLIGATION : Replacement of defective part(s) by authorized dealer are free of charges. If found defective by reasons of defective material / poor workmanship, parts will be replaced and there will be no value re-imburement. 3. TERMS & CONDITIONS : a. Claims under warranty will be accepted on submission of Warranty Card duly filled and stamped by authorized dealer together with the original purchase document. : b. Shipping / transportation / Incidental charges incurred in replacing defective parts under warranty shall be borne by the purchaser

WARRANTY null & void if

- (i) Lack of maintenance, (ii) Incorrect use of the machine or tampering, (iii) Use of non-genuine spare parts, (iv) Usage of acids, solvents, or any flammable materials, (v) Non-usage of filter water / clear water / soft water & using water above 40°C temperature, (vi) While using the pressure washers to draw water which is contaminated with dust & solvents (eg. paint thinners, gasoline, oil, etc.), (vii) Repair done by unauthorized service people, (viii) Those parts subject to wear & tear due to normal operations and plastic parts, rubber items etc, (ix) Loose connections, faulty electrical fixtures & fluctuations in power supply.
- 4. Should any failure occur during or after the warranty period, customer does not have the right to interrupt payment / price discount.
- 5. Incidental or consequential damages like inconvenience commercial loss, loss of tie, mental agony etc.
- 6. Loss of any nature due to operation or non-operation is not covered under warranty.
- 7. All free service are at Dealer's service point only.
- 8. Warranty ceases if service is not done periodically.
- 9. The attached card should be completed and returned to Ratnagiri Impex Pvt. Ltd. for registration immediately after sale / delivery.
- 10. The warranty is void unless you register the warranty card with Ratnagiri Impex Pvt. Ltd.
- 11. The decision of Ratnagiri Impex Pvt. Ltd., in settling the warranty is final in all respects.
- 12. All disputes are subject to Bangalore Courts Jurisdiction

1. LIMITED WARRANTY PERIOD : For a period of six months from the date of Sale / delivery of the product which ever is earlier. 2. LIMITED WARRANTY OBLIGATION : Replacement of defective part(s) by authorized dealer are free of charges. If found defective by reasons of defective material / poor workmanship, parts will be replaced and there will be no value re-imburement. 3. TERMS & CONDITIONS : a. Claims under warranty will be accepted on submission of Warranty Card duly filled and stamped by authorized dealer together with the original purchase document. : b. Shipping / transportation / Incidental charges incurred in replacing defective parts under warranty shall be borne by the purchaser.

WARRANTY null & void if

- (i) Lack of maintenance, (ii) Incorrect use of the machine or tampering, (iii) Use of non-genuine spare parts, (iv) Usage of acids, solvents, or any flammable materials, (v) Non-usage of filter water / clear water / soft water & using water above 40°C temperature, (vi) While using the pressure washers to draw water which is contaminated with dust & solvents (eg. paint thinners, gasoline, oil, etc.), (vii) Repair done by unauthorized service people, (viii) Those parts subject to wear & tear due to normal operations and plastic parts, rubber items etc, (ix) Loose connections, faulty electrical fixtures & fluctuations in power supply.
- 4. Should any failure occur during or after the warranty period, customer does not have the right to interrupt payment / price discount.
- 5. Incidental or consequential damages like inconvenience commercial loss, loss of tie, mental agony etc.
- 6. Loss of any nature due to operation or non-operation is not covered under warranty.
- 7. All free service are at Dealer's service point only.
- 8. Warranty ceases if service is not done periodically.
- 9. The attached card should be completed and returned to Ratnagiri Impex Pvt. Ltd. for registration immediately after sale / delivery.
- 10. The warranty is void unless you register the warranty card with Ratnagiri Impex Pvt. Ltd.
- 11. The decision of Ratnagiri Impex Pvt. Ltd., in settling the warranty is final in all respects.
- 12. All disputes are subject to Bangalore Courts Jurisdiction

1. LIMITED WARRANTY PERIOD : For a period of six months from the date of Sale / delivery of the product which ever is earlier. 2. LIMITED WARRANTY OBLIGATION : Replacement of defective part(s) by authorized dealer are free of charges. If found defective by reasons of defective material / poor workmanship, parts will be replaced and there will be no value re-imburement. 3. TERMS & CONDITIONS : a. Claims under warranty will be accepted on submission of Warranty Card duly filled and stamped by authorized dealer together with the original purchase document. : b. Shipping / transportation / Incidental charges incurred in replacing defective parts under warranty shall be borne by the purchaser.

WARRANTY null & void if

- (i) Lack of maintenance, (ii) Incorrect use of the machine or tampering, (iii) Use of non-genuine spare parts, (iv) Usage of acids, solvents, or any flammable materials, (v) Non-usage of filter water / clear water / soft water & using water above 40°C temperature, (vi) While using the pressure washers to draw water which is contaminated with dust & solvents (eg. paint thinners, gasoline, oil, etc.), (vii) Repair done by unauthorized service people, (viii) Those parts subject to wear & tear due to normal operations and plastic parts, rubber items etc, (ix) Loose connections, faulty electrical fixtures & fluctuations in power supply.
- 4. Should any failure occur during or after the warranty period, customer does not have the right to interrupt payment / price discount.
- 5. Incidental or consequential damages like inconvenience commercial loss, loss of tie, mental agony etc.
- 6. Loss of any nature due to operation or non-operation is not covered under warranty.
- 7. All free service are at Dealer's service point only.
- 8. Warranty ceases if service is not done periodically.
- 9. The attached card should be completed and returned to Ratnagiri Impex Pvt. Ltd. for registration immediately after sale / delivery.
- 10. The warranty is void unless you register the warranty card with Ratnagiri Impex Pvt. Ltd.
- 11. The decision of Ratnagiri Impex Pvt. Ltd., in settling the warranty is final in all respects.
- 12. All disputes are subject to Bangalore Courts Jurisdiction



FREE SERVICE COUPON (30DAYS/30HRS. WHICHEVER IS EARLIER)

MODEL

SERIAL NUMBER

PDI DATE

SERVICE NO.

PURCHASE BILL NO.

DATE

DEALERS OFFICE SEAL

- 1. Check and test the fuel mixture
- 3. Check , clean and adjust the spark plug
- 5. Check and sparken the cutting tools
- 7. Start and check the noise, vibration, loosen etc..

OPERATIONS

- 2. check and clean the air filter
- 4. Check and adjust the carburetor tuning
- 6. Product familirisation on usage
- 8. Routine maintenance and shortage.

FREE SERVICE COUPON (30DAYS/30HRS. WHICHEVER IS EARLIER)

MODEL

SERIAL NUMBER

PDI DATE

SERVICE NO.

PURCHASE BILL NO.

DATE

DEALERS OFFICE SEAL

- 1. Check and test the fuel mixture
- 3. Check , clean and adjust the spark plug
- 5. Check and sparken the cutting tools
- 7. Start and check the noise, vibration, loosen etc..

OPERATIONS

- 2. check and clean the air filter
- 4. Check and adjust the carburetor tuning
- 6. Product familirisation on usage
- 8. Routine maintenance and shortage.

FREE SERVICE COUPON (30DAYS/30HRS. WHICHEVER IS EARLIER)

MODEL

SERIAL NUMBER

PDI DATE

SERVICE NO.

PURCHASE BILL NO.

DATE

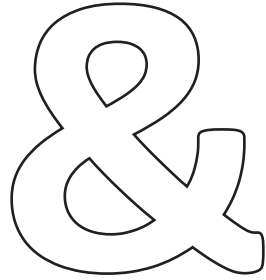
DEALERS OFFICE SEAL

- 1. Check and test the fuel mixture
- 3. Check , clean and adjust the spark plug
- 5. Check and sparken the cutting tools
- 7. Start and check the noise, vibration, loosen etc..

OPERATIONS

- 2. check and clean the air filter
- 4. Check and adjust the carburetor tuning
- 6. Product familirisation on usage
- 8. Routine maintenance and shortage.

DOS

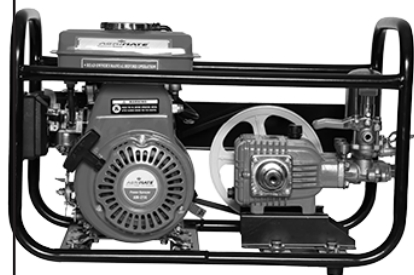
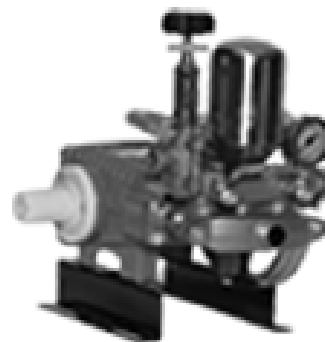


DONT'S

1. Always read the instruction manual supplied along with the equipments and understand the correct installation and operating procedures before attempting to use the equipments.
2. It is important to use the personal protection equipments such as head helmet with visor, ear defenders, goggles, safety gloves, cut resistant shoes, trousers and jackets while operating potentially dangerous machines
3. Avoid untrained persons using the equipments. Children must not be allowed to handle these equipments
4. Always use genuine spares and accessories in repairs and usage to derive maximum life of the equipments.
5. Always keep the equipments in good working condition to minimize loss of output as well as to reduce the pollution and save the environment
6. Do not use the machine within range of persons unless they wear protective clothing
7. Do not operate the machine when fatigued or under the influence of alcohol or drugs
8. When the machine is running, please maintain a constant water supply. Without water circulation will damage the sealing rings of the machine.
9. For more query kindly contact for our Service Center/Dealer/ franchise

Agrimate Army For Pest Control

ANY WHERE - ANY TIME - ANY CROP



Marketed by:

**ratnagiri
impex**

BRINGING YOU THE FUTURE... NOW

RATNAGIRI IMPEX PVT., LTD.,

Annapurna House, #1 / 1G, 7th Cross, New
Guddadahalli

Mysore Road, Bangalore - 560 026

Missed Call : 7393 938 938

Email: ask@agrimart.in

WEF : June 2022