

MINI TRANSPORTER - TRACK TROLLY
AM-MT-500M-TT
TRANSMISSION PART LIST



TECHNICAL SPECIFICATIONS

MINI TRANSPORTER - TRACK TROLLY	
MODEL	AM-MT-500M-TT
ENGINE	AM-170FP
POWER	7HP/212CC
NO. OF GEARS	3 FORWARD, 1 REVERSE
LOADING CAPACITY	UPTO 510KG

Operation Instructions

Warnings

Forbid to operate, maintain and check the machine before read and mater the instructions Please safe-keep the instructions in order to operate, maintain and check the machine in time.

About the instructions

In order that you can operate our machine more safe, the instructions contains method for operating ,maintain and checking. Correctly operating method is on basis of reading and grasping.

Warnings

Forbid to operate, maintain and check the machine before read and mater the instructions. Please safe-keep the instructions in order to operate, maintain and check the machine in time.

About the machine

Warnings

This machine exists potential dangers, you should operate maintain and check based on the instructions. This machine is for fields convey, not for other ways. Forbid to operate on such roads, national highways. If any accidents in such road ,our factory will not burden any responsibility. Fobid to change the machine, in order to avoid any accidents, forbid to take off the proof cover.

About the warnings items in this instructions

The instructions define warnings to below parts based on danger level(or accidents level) Please get understood for below warning items, and then operate the machine.

item	meaning
dangers	Very dangerous warning, without notice, may cause fatal accidents
warnings	potential dangerous warning, without notice, may cause fatal accidents
cautions	potential dangerous warning, without notice, may cause accidents or injury. Even will harm the machine.
suggestions	Attract one attention, or feedback your advice



1. Safety affairs

Safety driving, safety operating

General safety precautions must comply with this record of driving, operation. Driving operation must be in accordance with the provisions of the articles of association of security matters, always remember to safe driving, safety operation.

1.1 Before driving instructions



The right to wear safety clothing, and wear the safety guard Do not wear the leisure clothes like vests, shorts and sandals when operating.

Check before operation



Check carefully before start,any fault,need remove timely. Fire forbidden Fire away from fuel. Futuremore,add the fuel after engine off.

Fire Forbidden



Fire away from fuel.

Futuremore,add the fuel after engine off.

Loading cautions

forbid over loading

Forbid to load over the max capacity for this machine

correct to load the goods

In order to avoid placing uneven, let the machine roll over, please place them even and fasten with rope, moreover, should avoid the height to ensure the sight view

cautions for quantity restrictions

When crossing the wood bridge, please make sure the total quantity of machine, goods and operator lower than max bearing quantity. And cross within limited speed.

cautions for loading capacity at the bevelled level

At the degree 15-20 bevelled level, loading capacity should control within 150KG. when at 20-25, should bear nothing to drive. Forbid to drive while the level over 25 degrees. Forbid to shift while overloading or at bevelled level

forbid to operate the bucket while at bevelled level

Forbid to operate the bucket while at bevelled level, which will let the machine roll over. Lay the machine at the horizontal position if must take the step.

Parking instructions

Forbid to park in danger area

Park at the stable roads, forbidden in danger area

Fasten the wheels when parking at bevelled level

Forbid to park in bevelled level, fasten the wheels if must

Ignition method



warnings

- Start the engine at ventilation area to avoid get poisoned
- start the engine after confirm safety background
- Make sure the clutch at the stop position before start the engine to avoid the machine running to cause any accidents

cautions

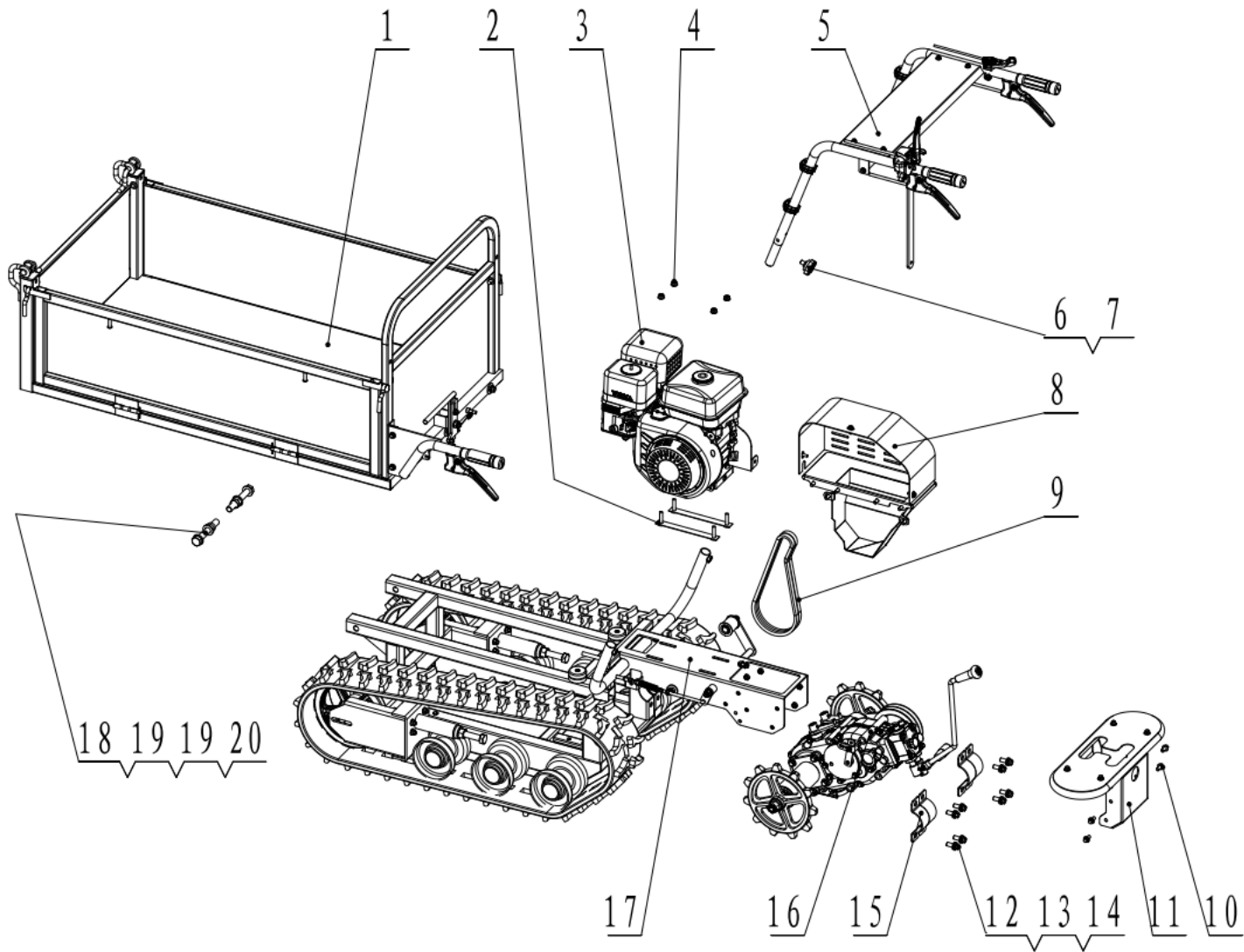
At winter or dry and cold environment, please warm up before driving, if not .will reduce the service for the machine

1. Make sure the clutch in stop position
2. Make sure the gearshift at neutral position
3. Turn the fuel tap to the ON position
4. Turn the throttle valve to the OFF position Suggestions: no need this step when the engine is hot
5. Turn the accelerating lever to the high position a little
6. Turn the main switch to the ON position
7. Pull the cable, start the engine
8. Turn the accelerating lever to the lower position after running the engine
9. Turn the throttle valve to the stiring position
10. 1-2 minutes working without any burden to warm up the machine suggestions After you have the machine, the first week(about 40-50H)just for running, avoid any overloading

Driving method

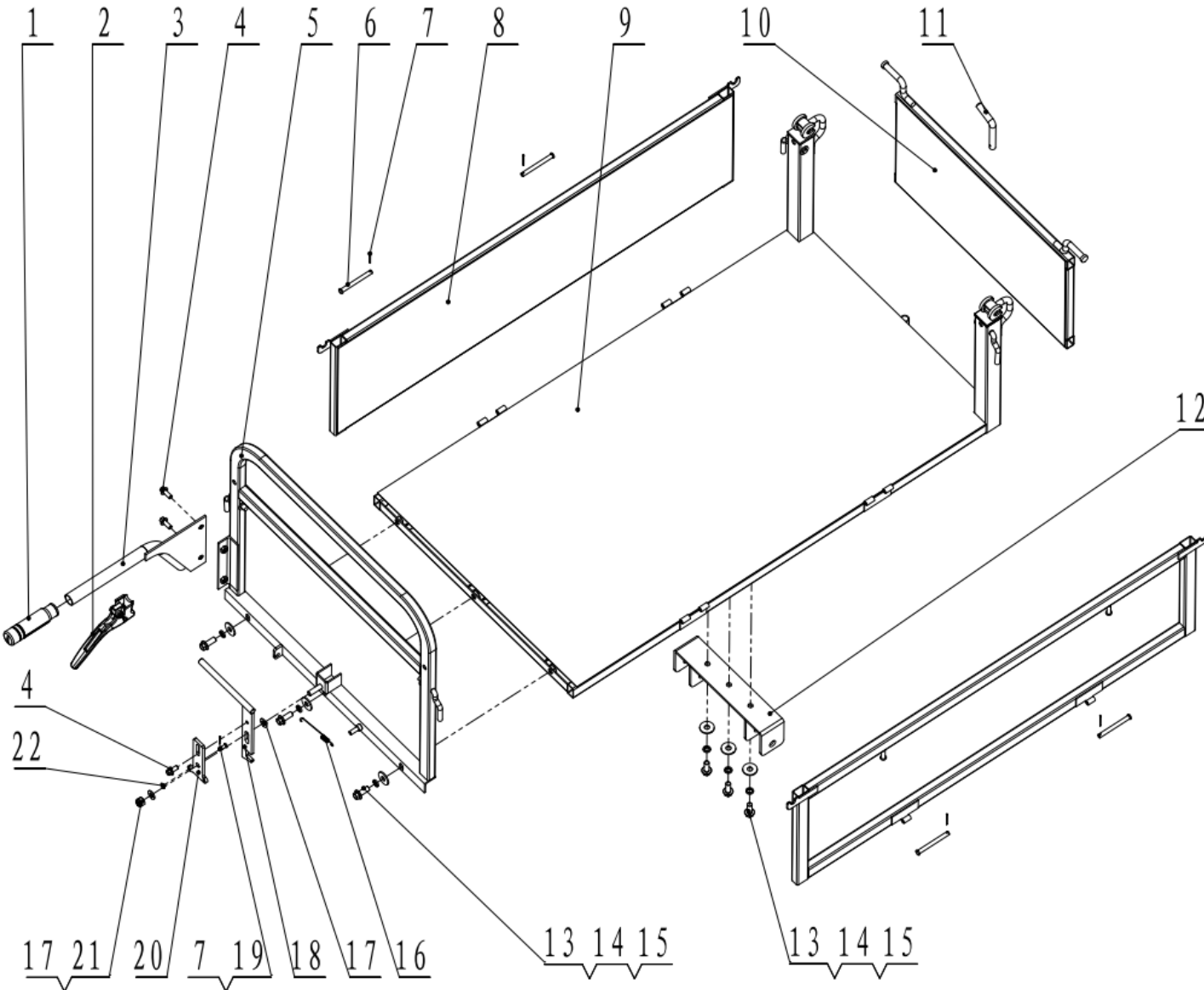
1. Make sure the safety affairs around the machine
2. Make sure the clutch at the stop position
3. Turn the gear lever and sub-gear lever to the neutral position suggestions About the walking speed for each gear lever, please refer the technical data.Turn the clutch forward to walking side slightly if gear lever can not move, then you can turn it again
4. Turn the accelerating lever forward to HIGH position, can speed up the output rotary speed.
5. turn the clutch to start position to start the machine
6. Turning left, operate the left clutch handle
7. Turning right, operate the right clutch handle

Machine parts - A



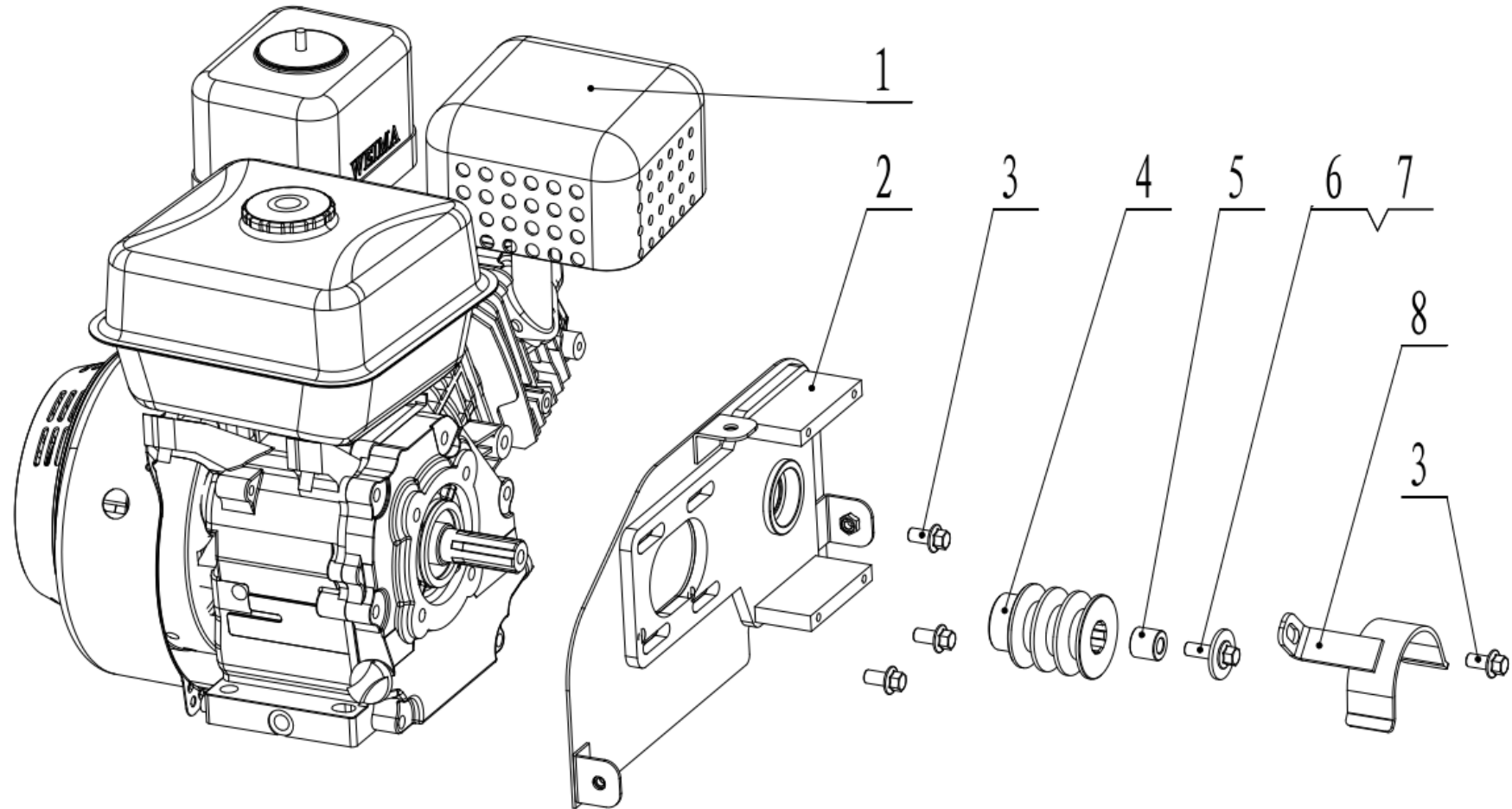
SL NO	PART NO.	DESCRIPTION	SL NO	PART NO.	DESCRIPTION
1	AM-MT-500M-TA01	Cargo box assy	11	AM-MT-500M-TA11	Bumper component
2	AM-MT-500M-TA02	Engine mounting frame welds	12	AM-MT-500M-TA12	Hexagon flange face bolt small series
3	AM-MT-500M-TA03	Engine component	13	AM-MT-500M-TA13	Standard spring washer
4	AM-MT-500M-TA04	Type 2 hexagon flange nut	14	AM-MT-500M-TA14	Flat washer Class A
5	AM-MT-500M-TA05	Handrail control assembly	15	AM-MT-500M-TA15	Output shaft clamp plate
6	AM-MT-500M-TA06	Star handle	16	AM-MT-500M-TA16	Transmission component
7	AM-MT-500M-TA07	Hexagon thin nut	17	AM-MT-500M-TA17	Chassis component
8	AM-MT-500M-TA08	Belt guard component	18	AM-MT-500M-TA18	Hexagon head bolt
9	AM-MT-500M-TA09	V-belt for agricultural machinery	19	AM-MT-500M-TA19	Flat washer Class A
10	AM-MT-500M-TA10	Hexagon flange face bolt small series	20	AM-MT-500M-TA20	Type 1 non-metal insert hexagon lock nut

Cargo box assy - B



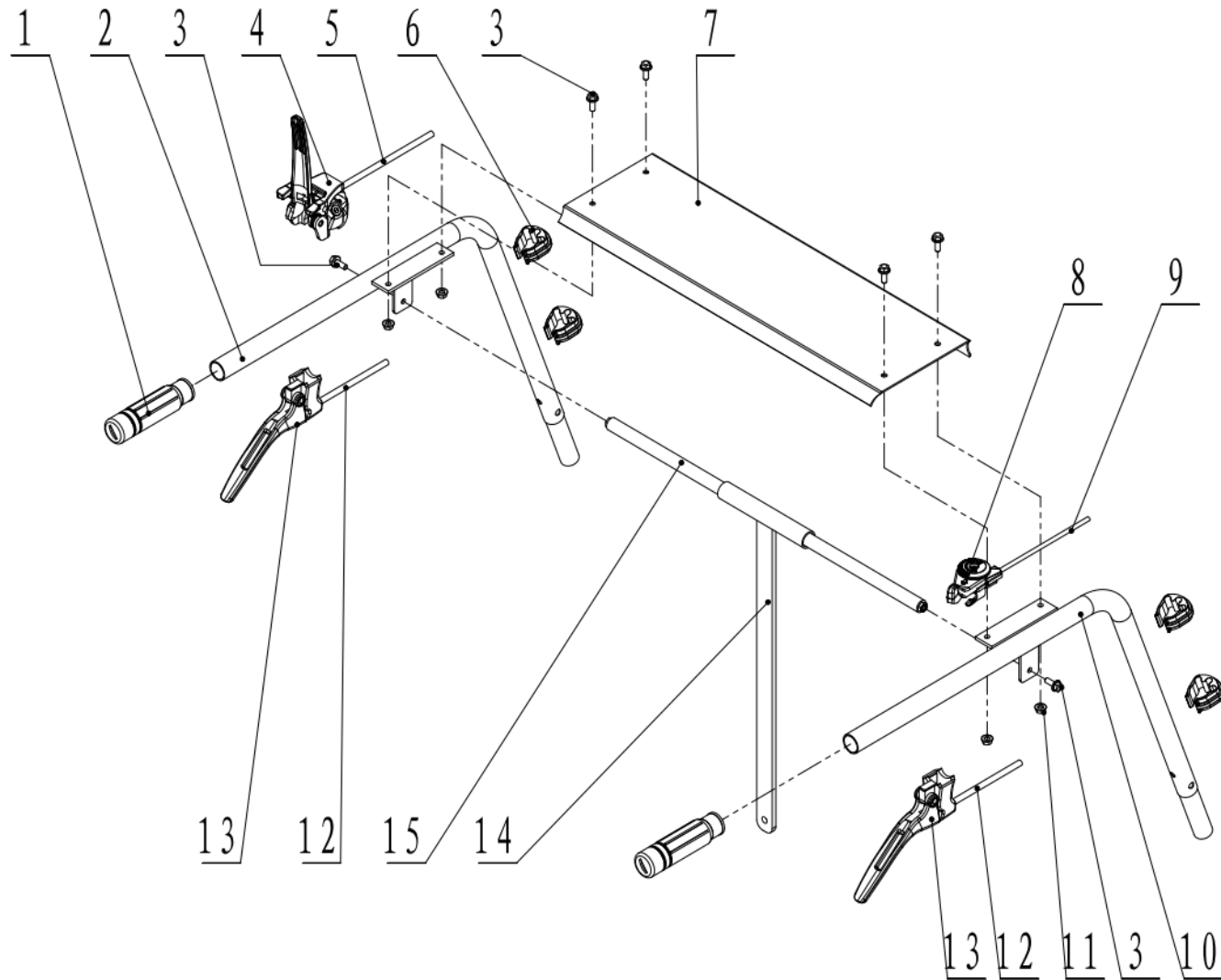
SL NO	PART NO.	DESCRIPTION	SL NO	PART NO.	DESCRIPTION
1	AM-MT-500M-TB01	Damping grip	12	AM-MT-500M-TB12	Bottom bracket
2	AM-MT-500M-TB02	Clutch handle	13	AM-MT-500M-TB13	Hexagon flange face bolt small series
3	AM-MT-500M-TB03	Cargo compartment handle assembly	14	AM-MT-500M-TB14	Standard spring washer
4	AM-MT-500M-TB04	Hexagon flange face bolt small series	15	AM-MT-500M-TB15	Large gasket Class C
5	AM-MT-500M-TB05	Cargo compartment front panel	16	AM-MT-500M-TB16	Lock hook return spring
6	AM-MT-500M-TB06	pin	17	AM-MT-500M-TB17	Flat washer Class A
7	AM-MT-500M-TB07	Cotter pin	18	AM-MT-500M-TB18	Cargo lock hook welds
8	AM-MT-500M-TB08	Electric flip cargo side panel	19	AM-MT-500M-TB19	pin
9	AM-MT-500M-TB09	Cargo floor	20	AM-MT-500M-TB20	Latch clamp
10	AM-MT-500M-TB10	Electric flip back panel	21	AM-MT-500M-TB21	Type 1 non-metal insert hexagon lock nut
11	AM-MT-500M-TB11	Rear plate lock pin	22	AM-MT-500M-TB22	Flat washer Class A

Engine component - C



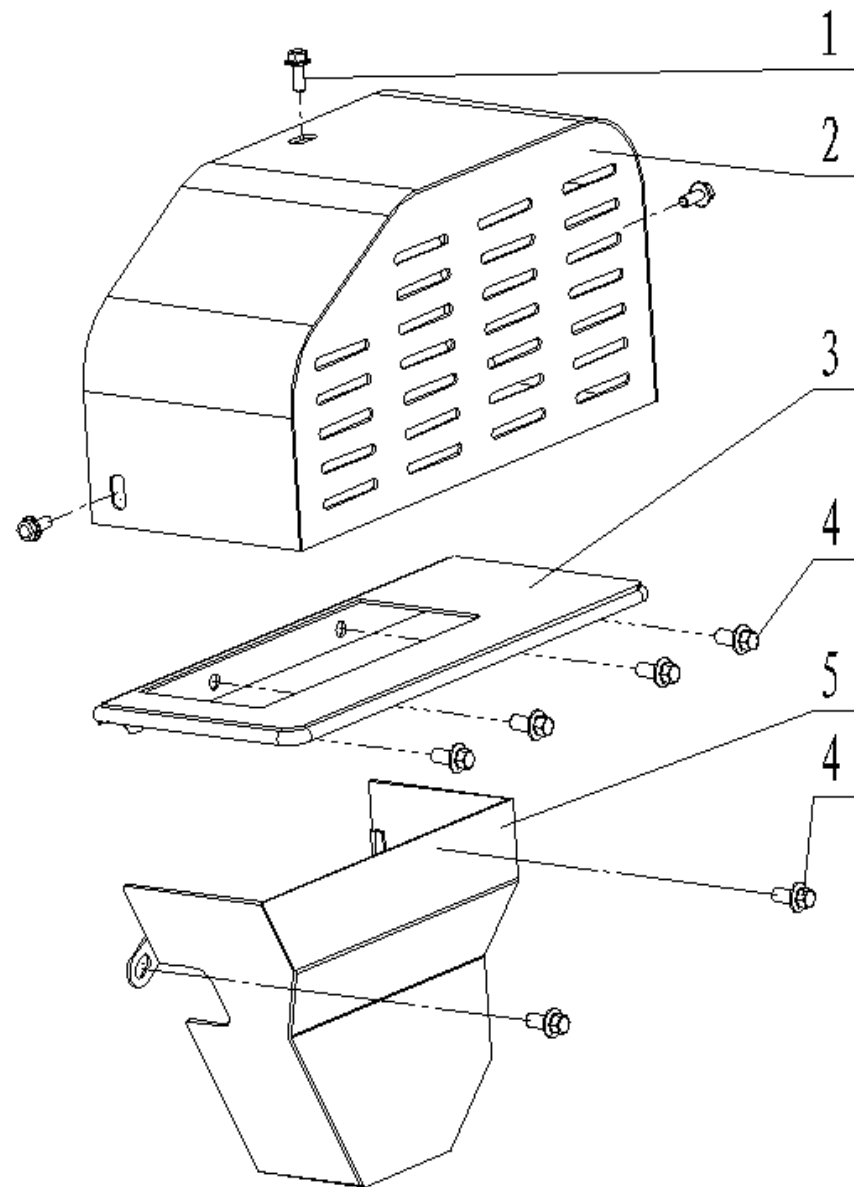
SL NO.	PART NO.	DESCRIPTION	SL NO	PART NO.	DESCRIPTION
1	AM-MT-500M-TC01	WM170F/P Agricultural machinery			
2	AM-MT-500M-TC02	Pulley base plate			
3	AM-MT-500M-TC03	Hexagon flange face bolt small series			
4	AM-MT-500M-TC04	Small belt pulley			
5	AM-MT-500M-TC05	bushing			
6	AM-MT-500M-TC06	Hexagon flange face bolt small series			
7	AM-MT-500M-TC07	Large gasket Class A			
8	AM-MT-500M-TC08	Small belt wheel guard			
9					
10					
11					

Handrail control assembly - D



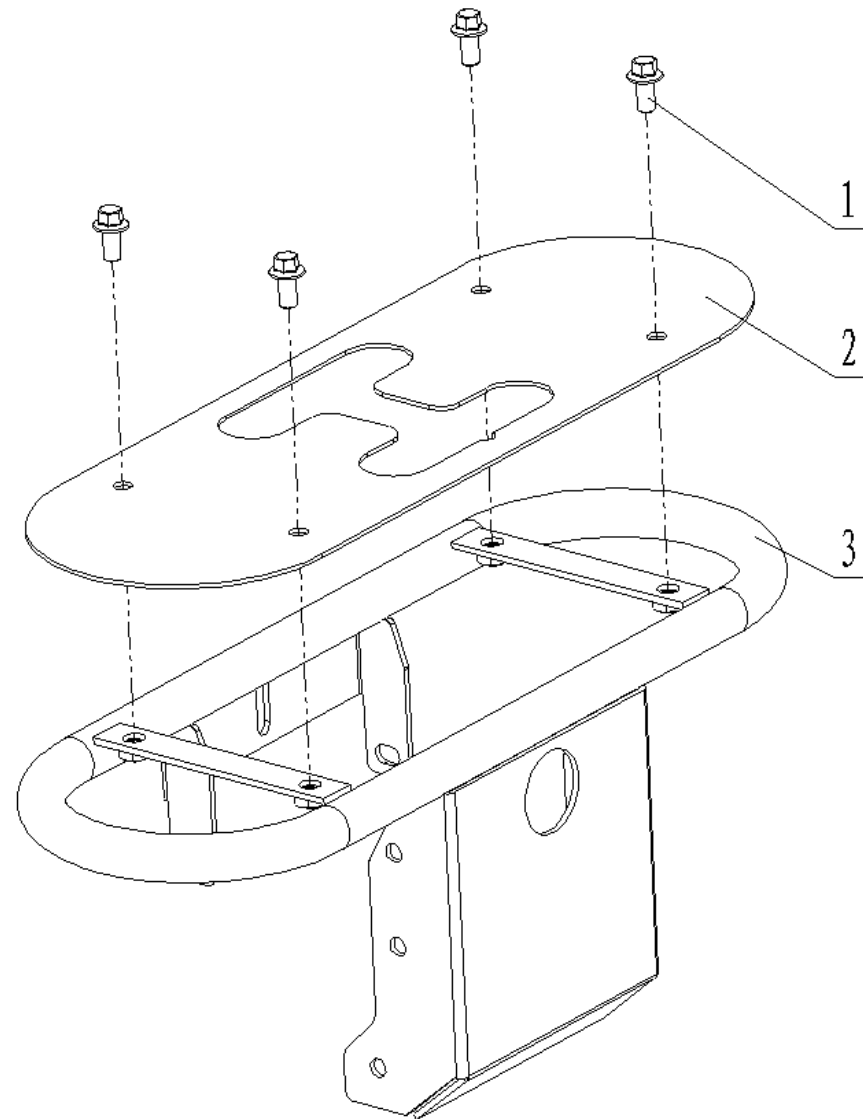
SL NO.	PART NO.	DESCRIPTION	SL NO	PART NO.	DESCRIPTION
1	AM-MT-500M-TD01	Damping grip			
2	AM-MT-500M-TD02	Push the weldment left			
3	AM-MT-500M-TD03	Hexagon flange bolt series B			
4	AM-MT-500M-TD04	Clutch handle			
5	AM-MT-500M-TD05	Clutch cable			
6	AM-MT-500M-TD06	Self-locking hoop			
7	AM-MT-500M-TD07	Connecting panel			
8	AM-MT-500M-TD08	Throttle switch			
9	AM-MT-500M-TD09	Throttle cable			
10	AM-MT-500M-TD10	Push right handle weldment			
11	AM-MT-500M-TD11	Type 2 hexagon flange nut			
12	AM-MT-500M-TD12	Steering cable			
13	AM-MT-500M-TD13	Clutch handle assembly			
14	AM-MT-500M-TD14	Support plate assembly welds			
15	AM-MT-500M-TD15	Cross bar welds			

Belt Guard component - E



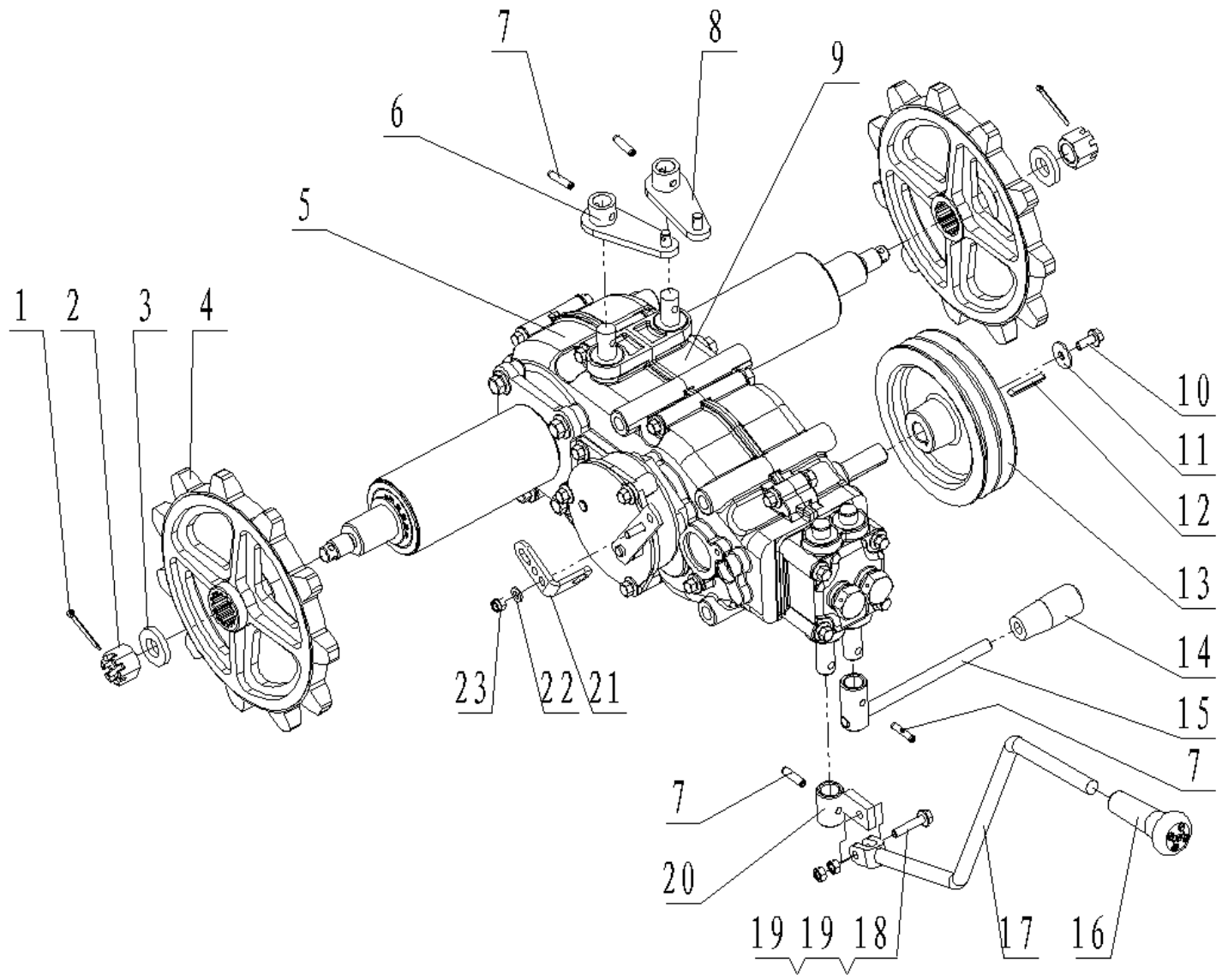
SL NO.	PART NO.	DESCRIPTION	SL NO	PART NO.	DESCRIPTION
1	AM-MT-500M-TE01	Hexagon flange face bolt small series			
2	AM-MT-500M-TE02	Put on the belt guard			
3	AM-MT-500M-TE03	Right side support			
4	AM-MT-500M-TE04	Hexagon flange face bolt small series			
5	AM-MT-500M-TE05	Lower belt guard			
6					
7					
8					
9					
10					
11					
12					
13					
14					
15					

Bumper Component - F



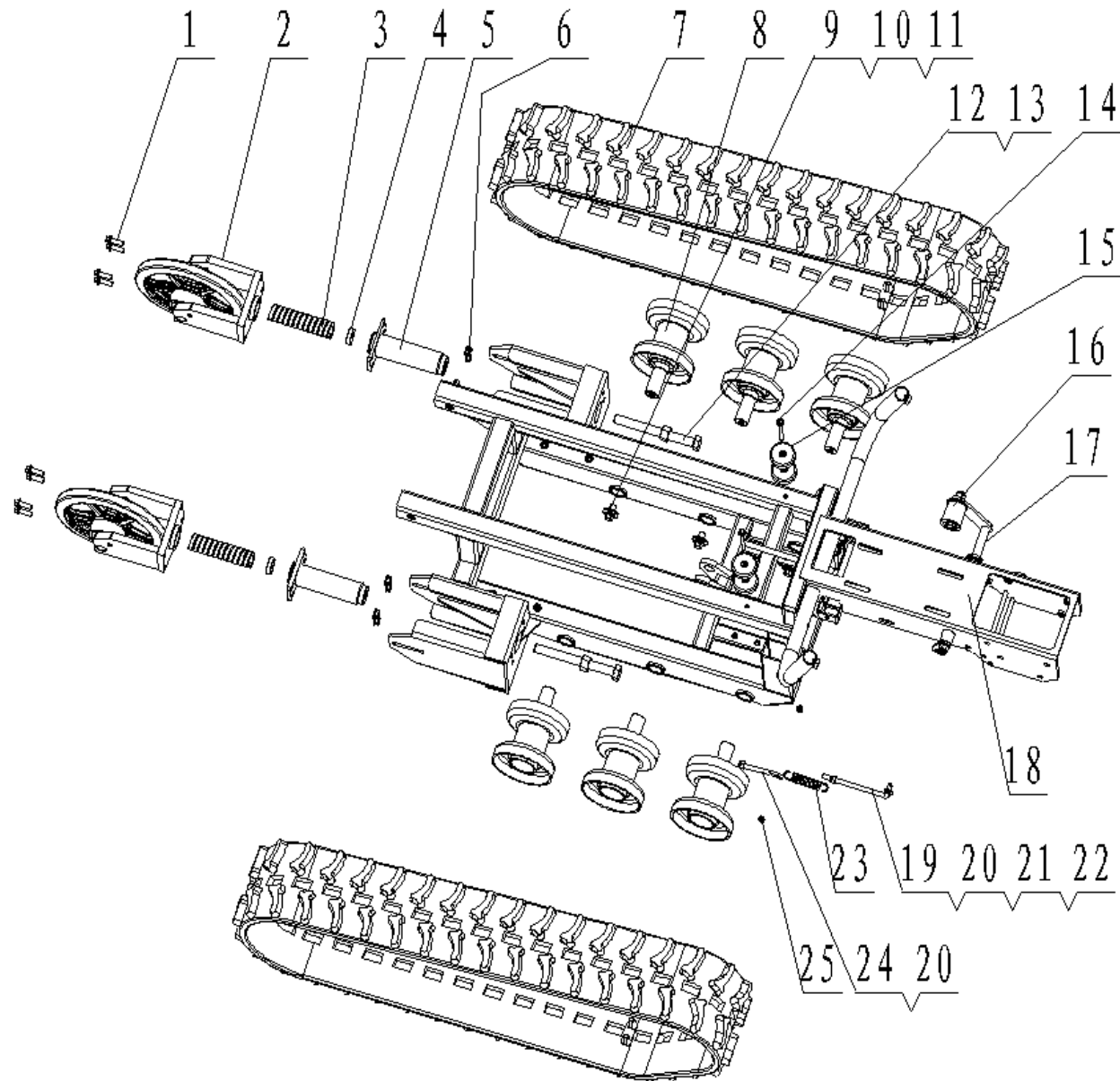
SL NO.	PART NO.	DESCRIPTION	SL NO	PART NO.	DESCRIPTION
1	AM-MT-500M-TF01	Hexagon flange face bolt small series			
2	AM-MT-500M-TF02	Overlay plate			
3	AM-MT-500M-TF03	bumper			
4					
5					
6					
7					
8					
9					
10					
11					
12					
13					
14					
15					

Transmission Component - G



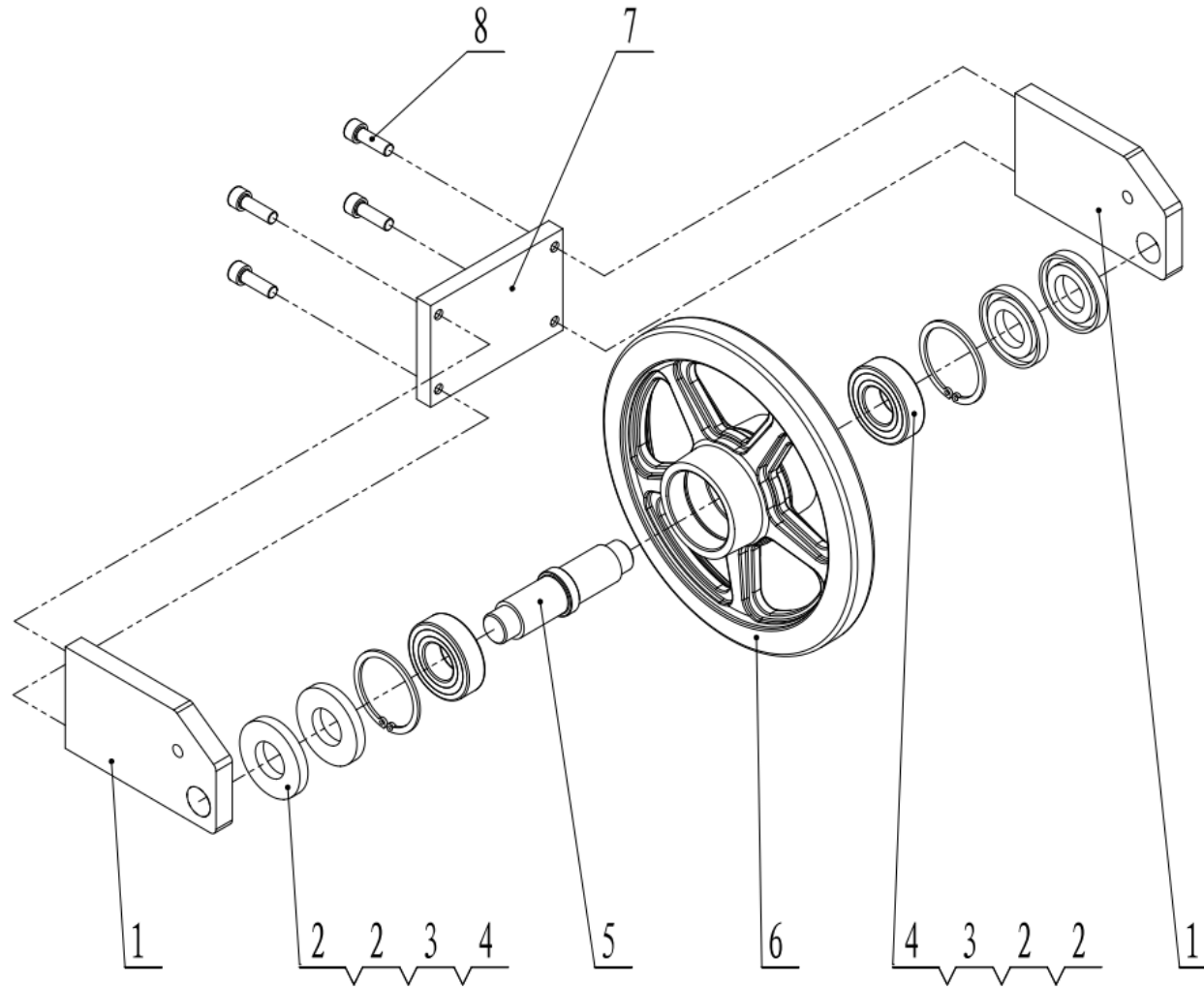
SL NO.	PART NO.	DESCRIPTION	SL NO	PART NO.	DESCRIPTION
1	AM-MT-500M-TG01	Cotter pin	17	AM-MT-500M-TG17	Gear shift lever
2	AM-MT-500M-TG02	Hexagon slotted nuts, type 1, class A and B	18	AM-MT-500M-TG18	Hexagon flange bolt series B
3	AM-MT-500M-TG03	gasket	19	AM-MT-500M-TG19	Hexagon nut type 1
4	AM-MT-500M-TG04	Driving wheel	20	AM-MT-500M-TG20	Shift lever sleeve
5	AM-MT-500M-TG05	shell	21	AM-MT-500M-TG21	Camshaft arm pull plate
6	AM-MT-500M-TG06	Steering disengaging arm assembly	22	AM-MT-500M-TG22	Flat washer Class A
7	AM-MT-500M-TG07	Elastic cylindrical pin coil standard type	23	AM-MT-500M-TG23	Type 1 non-metal insert hexagon lock nut
8	AM-MT-500M-TG08	Steering disengaging arm assembly			
9	AM-MT-500M-TG09	shell			
10	AM-MT-500M-TG10	Hexagon flange bolt series B			
11	AM-MT-500M-TG11	Extra-large gasket Class C			
12	AM-MT-500M-TG12	Plain type flat key			
13	AM-MT-500M-TG13	Big pulley			
14	AM-MT-500M-TG14	Damping grip			
15	AM-MT-500M-TG15	High and low speed joystick welds			
16	AM-MT-500M-TG16	Damping grip			

Chassis Component - H



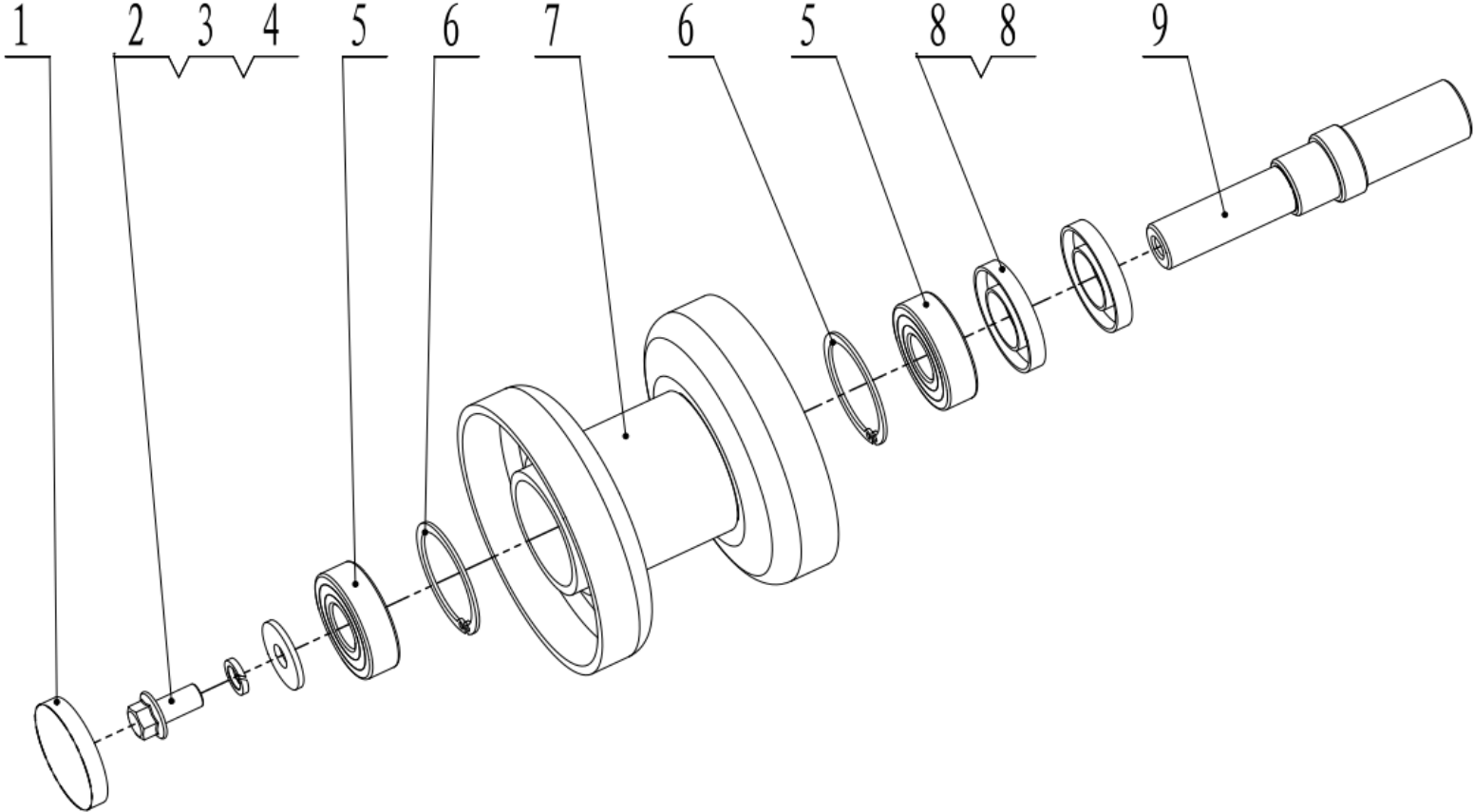
SL NO.	PART NO.	DESCRIPTION	SL NO	PART NO.	DESCRIPTION
1	AM-MT-500M-TH01	Hexagon flange face bolt small series	17	AM-MT-500M-TH17	Brake arm assembly
2	AM-MT-500M-TH02	Track tensioning wheel assembly	18	AM-MT-500M-TH18	Chassis assy
3	AM-MT-500M-TH03	Compression spring	19	AM-MT-500M-TH19	Brake adjusting lever
4	AM-MT-500M-TH04	Support sleeve	20	AM-MT-500M-TH20	Type 1 non-metal insert hexagon lock nut
5	AM-MT-500M-TH05	Spring support	21	AM-MT-500M-TH21	Flat washer Class A
6	AM-MT-500M-TH06	Type 2 hexagon flange nut	22	AM-MT-500M-TH22	Cotter pin
7	AM-MT-500M-TH07	Caterpillar belt	23	AM-MT-500M-TH23	Reverse gear return spring
8	AM-MT-500M-TH08	Support wheel assembly	24	AM-MT-500M-TH24	Adjustable short tie rod
9	AM-MT-500M-TH09	Hexagon flange face bolt small series	25	AM-MT-500M-TH25	Type 1 non-metal insert hexagon lock nut
10	AM-MT-500M-TH10	Standard spring washer			
11	AM-MT-500M-TH11	Large gasket Class A			
12	AM-MT-500M-TH12	Hexagon head bolt with full thread			
13	AM-MT-500M-TH13	Hexagon nut type 1			
14	AM-MT-500M-TH14	Hexagon flange face bolt small series			
15	AM-MT-500M-TH15	cushion			
16	AM-MT-500M-TH16	Double grooved belt tensioner parts			

Track tensioning wheel assembly - J



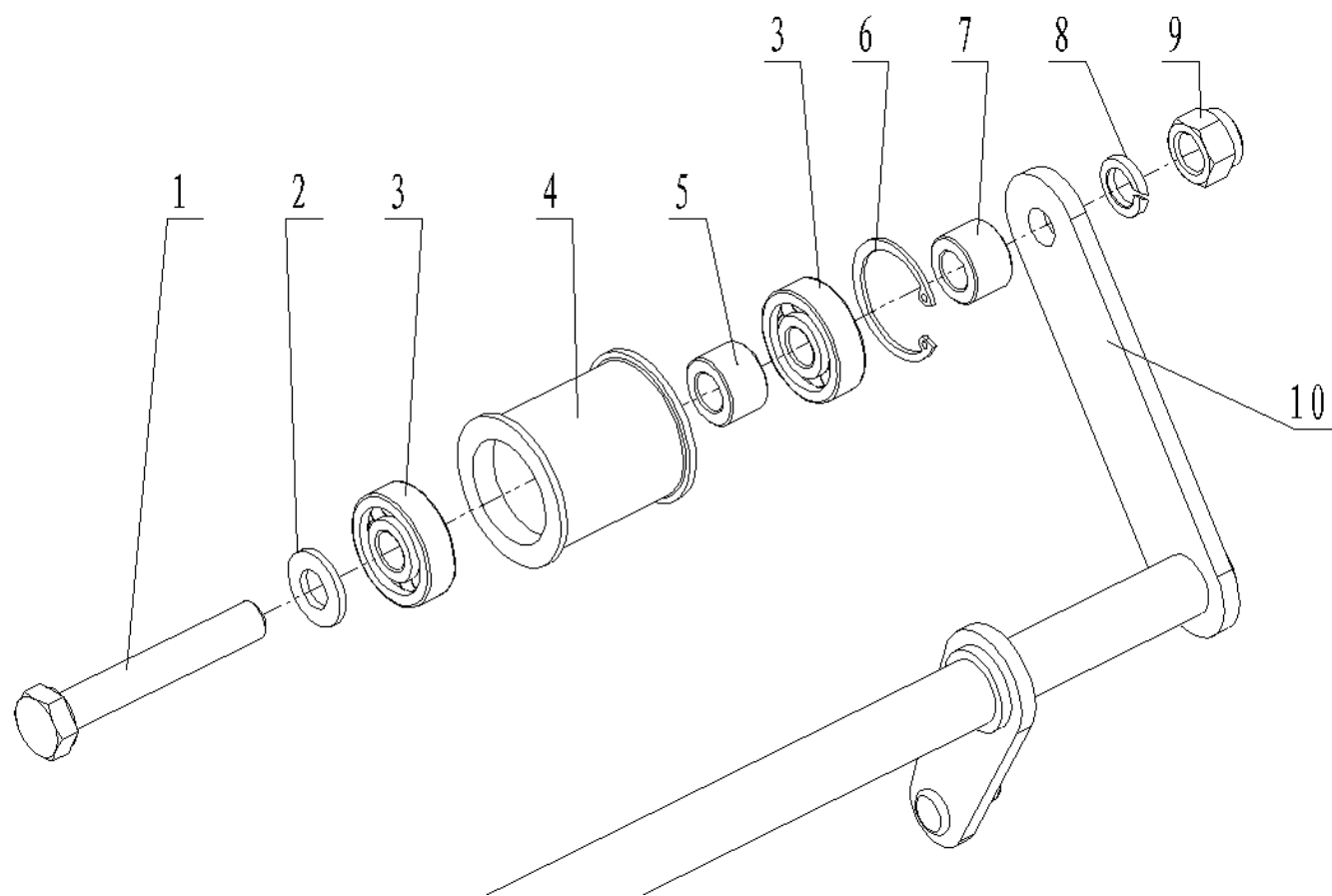
SL NO.	PART NO.	DESCRIPTION	SL NO	PART NO.	DESCRIPTION
1	AM-MT-500M-TJ01	Tension block			
2	AM-MT-500M-TJ02	Non-standard oil seal			
3	AM-MT-500M-TJ03	Elastic retainer for hole			
4	AM-MT-500M-TJ04	Deep groove ball bearing			
5	AM-MT-500M-TJ05	Tensioning axle			
6	AM-MT-500M-TJ06	Tensioning pulley			
7	AM-MT-500M-TJ07	Connecting plate			
8	AM-MT-500M-TJ08	Hex socket screw with cylindrical head			
9					
10					
11					
12					
13					
14					
15					
16					

Support wheel assembly - K



SL NO.	PART NO.	DESCRIPTION	SL NO	PART NO.	DESCRIPTION
1	AM-MT-500M-TK01	Support wheel oil blocked			
2	AM-MT-500M-TK02	Hexagon flange face bolt small series			
3	AM-MT-500M-TK03	Standard spring washer			
4	AM-MT-500M-TK04	Large gasket Class A			
5	AM-MT-500M-TK05	Deep groove ball bearing			
6	AM-MT-500M-TK06	Elastic retainer for hole			
7	AM-MT-500M-TK07	Support wheel assembly welds			
8	AM-MT-500M-TK08	Oil seal			
9	AM-MT-500M-TK09	Support axle			
10					
11					
12					
13					
14					
15					
16					

Double grooved belt tensioner parts - L



SL NO.	PART NO.	DESCRIPTION	SL NO	PART NO.	DESCRIPTION
1	AM-MT-500M-TL01	Hexagon head bolt			
2	AM-MT-500M-TL02	Flat washer Class A			
3	AM-MT-500M-TL03	Deep groove ball bearing			
4	AM-MT-500M-TL04	Tension wheel assembly			
5	AM-MT-500M-TL05	bushing			
6	AM-MT-500M-TL06	Elastic retainer for hole			
7	AM-MT-500M-TL07	bushing			
8	AM-MT-500M-TL08	Standard spring washer			
9	AM-MT-500M-TL09	Type 1 non-metal insert hexagon lock nut			
10					
11					
12					
13					
14					
15					
16					

INSPECTION & MAINTAINANCE

For safety use, make sure the machine is cleaned every three months. Before working, make sure to inspect the filter and the nozzle and ensure there is no impurity. After working, make sure there is no water in the pump and the hose.

If the machine needs to be repaired in the guarantee period, please return the machine to the shop. You need to provide the certificate of purchase on order to repair or get the substitute.

Before packing, the machine should be cleaned, then use closed packaging, packaging should be firm. Store the machine in dry place.

For transportation safety. The machine should comply with ISTA.

Do not dispose of electrical machines as unsorted municipal waste, use separate collection facilities.

If electrical machines are disposed of in landfills or dumps, hazardous substances can leak into the ground water and get into the food chain, damaging your health and well being.

When replacing old machines with new ones, the retailer is legally obligated to take back your old machine for disposals at least free of charge.

WARRANTY CARD

CUSTOMER COPY

DATE _____	DATE OF DELIVERY _____	DEALERS OFFICIAL SEAL	DEALERS SIGN _____
PURCHASERS NAME & ADDRESS _____ _____	<input type="text"/>	<input type="text"/>	
PRODUCT NAME	PRODUCT SERIAL NO.	INVOICE/DN NO.	
<input type="text" value="MINI TRANSPORTER"/>	<input type="text"/>	<input type="text"/>	
I/Will accept the terms and conditions of warranty as in the warranty card			

DEALERS COPY

DATE _____	DATE OF DELIVERY _____	DEALERS OFFICIAL SEAL	DEALERS SIGN _____
PURCHASERS NAME & ADDRESS _____ _____	<input type="text"/>	<input type="text"/>	
PRODUCT NAME	PRODUCT SERIAL NO.	INVOICE/DN NO.	
<input type="text" value="MINI TRANSPORTER"/>	<input type="text"/>	<input type="text"/>	
I/Will accept the terms and conditions of warranty as in the warranty card			

COMPANY COPY

DATE _____	DATE OF DELIVERY _____	DEALERS OFFICIAL SEAL	DEALERS SIGN _____
PURCHASERS NAME & ADDRESS _____ _____	<input type="text"/>	<input type="text"/>	
PRODUCT NAME	PRODUCT SERIAL NO.	INVOICE/DN NO.	
<input type="text" value="MINI TRANSPORTER"/>	<input type="text"/>	<input type="text"/>	
I/Will accept the terms and conditions of warranty as in the warranty card			

1. LIMITED WARRANTY PERIOD : For a period of six months from the date of Sale / delivery of the product which ever is earlier. 2. LIMITED WARRANTY OBLIGATION : Replacement of defective part(s) by authorized dealer are free of charges. If found defective by reasons of defective material / poor workmanship, parts will be replaced and there will be no value re-imburement. 3. TERMS & CONDITIONS : a. Claims under warranty will be accepted on submission of Warranty Card duly filled and stamped by authorized dealer together with the original purchase document. : b. Shipping / transportation / Incidental charges incurred in replacing defective parts under warranty shall be borne by the purchaser

WARRANTY null & void if

- (i) Lack of maintenance, (ii) Incorrect use of the machine or tampering, (iii) Use of non-genuine spare parts, (iv) Usage of acids, solvents, or any flammable materials, (v) Non-usage of filter water / clear water / soft water & using water above 40°C temperature, (vi) While using the pressure washers to draw water which is contaminated with dust & solvents (eg. paint thinners, gasoline, oil, etc.), (vii) Repair done by unauthorized service people, (viii) Those parts subject to wear & tear due to normal operations and plastic parts, rubber items etc, (ix) Loose connections, faulty electrical fixtures & fluctuations in power supply.
- 4. Should any failure occur during or after the warranty period, customer does not have the right to interrupt payment / price discount.
- 5. Incidental or consequential damages like inconvenience commercial loss, loss of tie, mental agony etc.
- 6. Loss of any nature due to operation or non-operation is not covered under warranty.
- 7. All free service are at Dealer's service point only.
- 8. Warranty ceases if service is not done periodically.
- 9. The attached card should be completed and returned to Ratnagiri Impex Pvt. Ltd. for registration immediately after sale / delivery.
- 10. The warranty is void unless you register the warranty card with Ratnagiri Impex Pvt. Ltd.
- 11. The decision of Ratnagiri Impex Pvt. Ltd., in settling the warranty is final in all respects.
- 12. All disputes are subject to Bangalore Courts Jurisdiction

1. LIMITED WARRANTY PERIOD : For a period of six months from the date of Sale / delivery of the product which ever is earlier. 2. LIMITED WARRANTY OBLIGATION : Replacement of defective part(s) by authorized dealer are free of charges. If found defective by reasons of defective material / poor workmanship, parts will be replaced and there will be no value re-imburement. 3. TERMS & CONDITIONS : a. Claims under warranty will be accepted on submission of Warranty Card duly filled and stamped by authorized dealer together with the original purchase document. : b. Shipping / transportation / Incidental charges incurred in replacing defective parts under warranty shall be borne by the purchaser.

WARRANTY null & void if

- (i) Lack of maintenance, (ii) Incorrect use of the machine or tampering, (iii) Use of non-genuine spare parts, (iv) Usage of acids, solvents, or any flammable materials, (v) Non-usage of filter water / clear water / soft water & using water above 40°C temperature, (vi) While using the pressure washers to draw water which is contaminated with dust & solvents (eg. paint thinners, gasoline, oil, etc.), (vii) Repair done by unauthorized service people, (viii) Those parts subject to wear & tear due to normal operations and plastic parts, rubber items etc, (ix) Loose connections, faulty electrical fixtures & fluctuations in power supply.
- 4. Should any failure occur during or after the warranty period, customer does not have the right to interrupt payment / price discount.
- 5. Incidental or consequential damages like inconvenience commercial loss, loss of tie, mental agony etc.
- 6. Loss of any nature due to operation or non-operation is not covered under warranty.
- 7. All free service are at Dealer's service point only.
- 8. Warranty ceases if service is not done periodically.
- 9. The attached card should be completed and returned to Ratnagiri Impex Pvt. Ltd. for registration immediately after sale / delivery.
- 10. The warranty is void unless you register the warranty card with Ratnagiri Impex Pvt. Ltd.
- 11. The decision of Ratnagiri Impex Pvt. Ltd., in settling the warranty is final in all respects.
- 12. All disputes are subject to Bangalore Courts Jurisdiction

1. LIMITED WARRANTY PERIOD : For a period of six months from the date of Sale / delivery of the product which ever is earlier. 2. LIMITED WARRANTY OBLIGATION : Replacement of defective part(s) by authorized dealer are free of charges. If found defective by reasons of defective material / poor workmanship, parts will be replaced and there will be no value re-imburement. 3. TERMS & CONDITIONS : a. Claims under warranty will be accepted on submission of Warranty Card duly filled and stamped by authorized dealer together with the original purchase document. : b. Shipping / transportation / Incidental charges incurred in replacing defective parts under warranty shall be borne by the purchaser.

WARRANTY null & void if

- (i) Lack of maintenance, (ii) Incorrect use of the machine or tampering, (iii) Use of non-genuine spare parts, (iv) Usage of acids, solvents, or any flammable materials, (v) Non-usage of filter water / clear water / soft water & using water above 40°C temperature, (vi) While using the pressure washers to draw water which is contaminated with dust & solvents (eg. paint thinners, gasoline, oil, etc.), (vii) Repair done by unauthorized service people, (viii) Those parts subject to wear & tear due to normal operations and plastic parts, rubber items etc, (ix) Loose connections, faulty electrical fixtures & fluctuations in power supply.
- 4. Should any failure occur during or after the warranty period, customer does not have the right to interrupt payment / price discount.
- 5. Incidental or consequential damages like inconvenience commercial loss, loss of tie, mental agony etc.
- 6. Loss of any nature due to operation or non-operation is not covered under warranty.
- 7. All free service are at Dealer's service point only.
- 8. Warranty ceases if service is not done periodically.
- 9. The attached card should be completed and returned to Ratnagiri Impex Pvt. Ltd. for registration immediately after sale / delivery.
- 10. The warranty is void unless you register the warranty card with Ratnagiri Impex Pvt. Ltd.
- 11. The decision of Ratnagiri Impex Pvt. Ltd., in settling the warranty is final in all respects.
- 12. All disputes are subject to Bangalore Courts Jurisdiction



FREE SERVICE COUPON (30DAYS/30HRS. WHICHEVER IS EARLIER)

MODEL

AM-MT-500M-TT

SERIAL NUMBER

PDI DATE

SERVICE NO.

PURCHASE BILL NO.

DATE

DEALERS OFFICE SEAL

- 1. Check and test the fuel mixture
- 3. Check , clean and adjust the spark plug
- 5. Check and sparken the cutting tools
- 7. Start and check the noise, vibration, loosen etc..

OPERATIONS

- 2. check and clean the air filter
- 4. Check and adjust the carburetor tuning
- 6. Product familirisation on usage
- 8. Routine maintenance and shortage.

FREE SERVICE COUPON (30DAYS/30HRS. WHICHEVER IS EARLIER)

MODEL

AM-MT-500M-TT

SERIAL NUMBER

PDI DATE

SERVICE NO.

PURCHASE BILL NO.

DATE

DEALERS OFFICE SEAL

- 1. Check and test the fuel mixture
- 3. Check , clean and adjust the spark plug
- 5. Check and sparken the cutting tools
- 7. Start and check the noise, vibration, loosen etc..

OPERATIONS

- 2. check and clean the air filter
- 4. Check and adjust the carburetor tuning
- 6. Product familirisation on usage
- 8. Routine maintenance and shortage.

FREE SERVICE COUPON (30DAYS/30HRS. WHICHEVER IS EARLIER)

MODEL

AM-MT-500M-TT

SERIAL NUMBER

PDI DATE

SERVICE NO.

PURCHASE BILL NO.

DATE

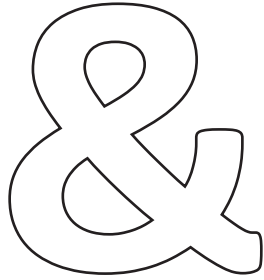
DEALERS OFFICE SEAL

- 1. Check and test the fuel mixture
- 3. Check , clean and adjust the spark plug
- 5. Check and sparken the cutting tools
- 7. Start and check the noise, vibration, loosen etc..

OPERATIONS

- 2. check and clean the air filter
- 4. Check and adjust the carburetor tuning
- 6. Product familirisation on usage
- 8. Routine maintenance and shortage.

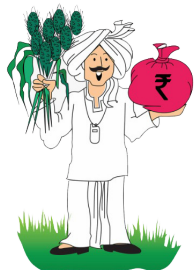
DOS



DONT'S

1. Always read the instruction manual supplied along with the equipments and understand the correct installation and operating procedures before attempting to use the equipments.
2. It is important to use the personal protection equipments such as head helmet with visor, ear defenders, goggles, safety gloves, cut resistant shoes, trousers and jackets while operating potentially dangerous machines
3. Avoid untrained persons using the equipments. Children must not be allowed to handle these equipments
4. Always use genuine spares and accessories in repairs and usage to derive maximum life of the equipments.
5. Always keep the equipments in good working condition to minimize loss of output as well as to reduce the pollution and save the environment
6. Do not use the machine within range of persons unless they wear protective clothing
7. Do not operate the machine when fatigued or under the influence of alcohol or drugs
8. When the machine is running, please maintain a constant water supply. Without water circulation will damage the sealing rings of the machine.
9. For more query kindly contact for our Service Center/Dealer/ franchise

AGRIMATE MULTI PURPOSE EQUIPMENT ANYWHERE - ANYTIME - ANY CROP



 **ratnagiri[®]
impeX**
BRINGING YOU THE FUTURE... NOW

IMPORTED & MARKETED BY,
RATNAGIRI IMPEX PVT., LTD.,
Annapurna House, #1 / 1G, 7th Cross, New
Guddadahalli Mysore Road, Bangalore - 560 026
Missed Call : 7393 938 938 Email: ask@agrimart.in