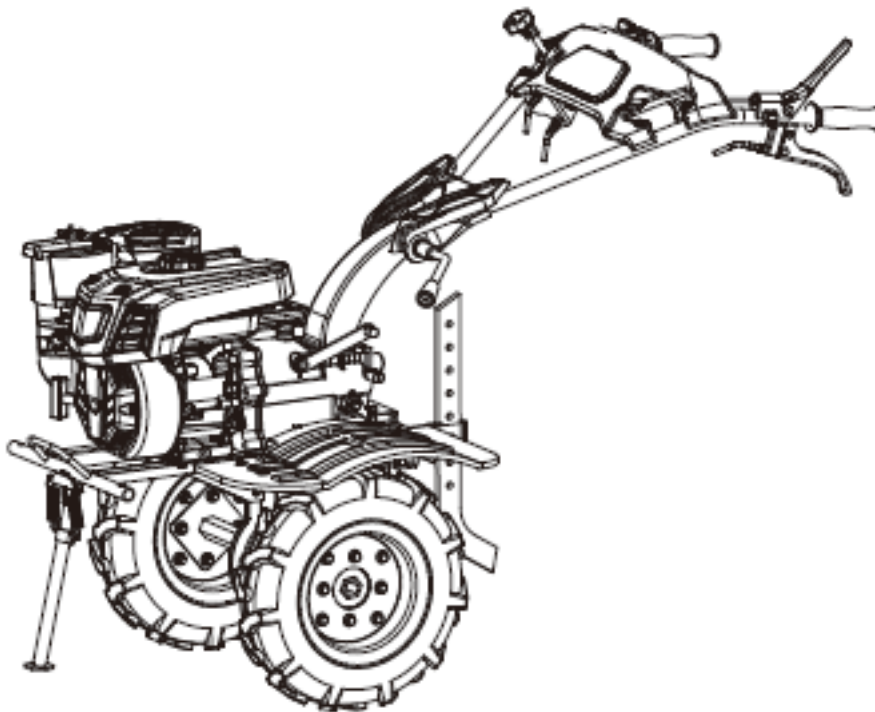
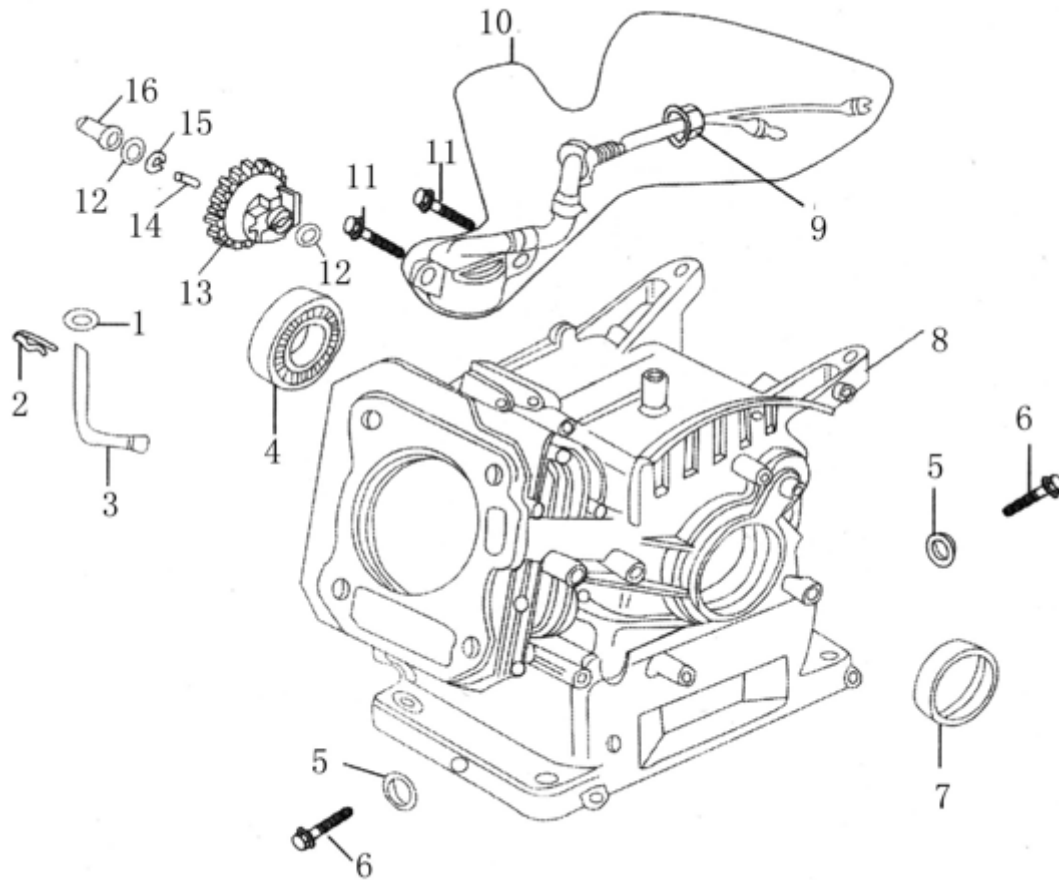


INTERCULTIVATOR/POWER WEEDER AM-RT-1212-7PR ENGINE DIAGRAM

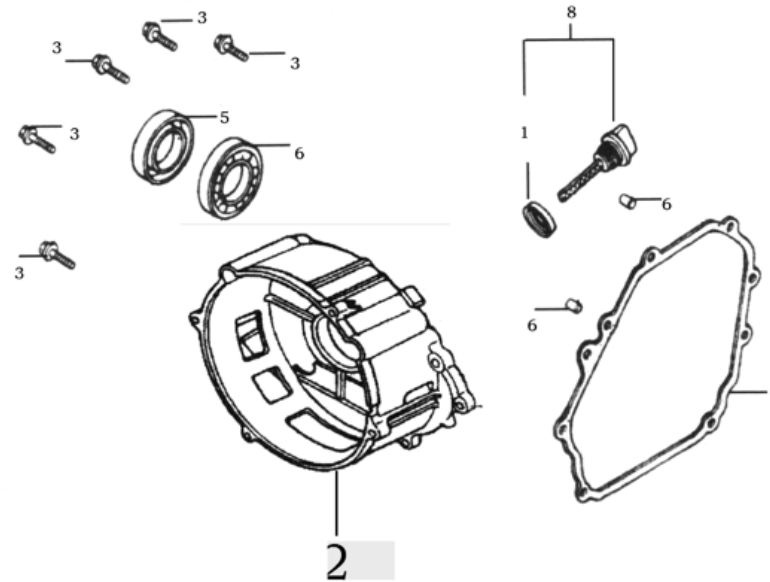


ENGINE DIAGRAM OF AM-RT-1212-7P



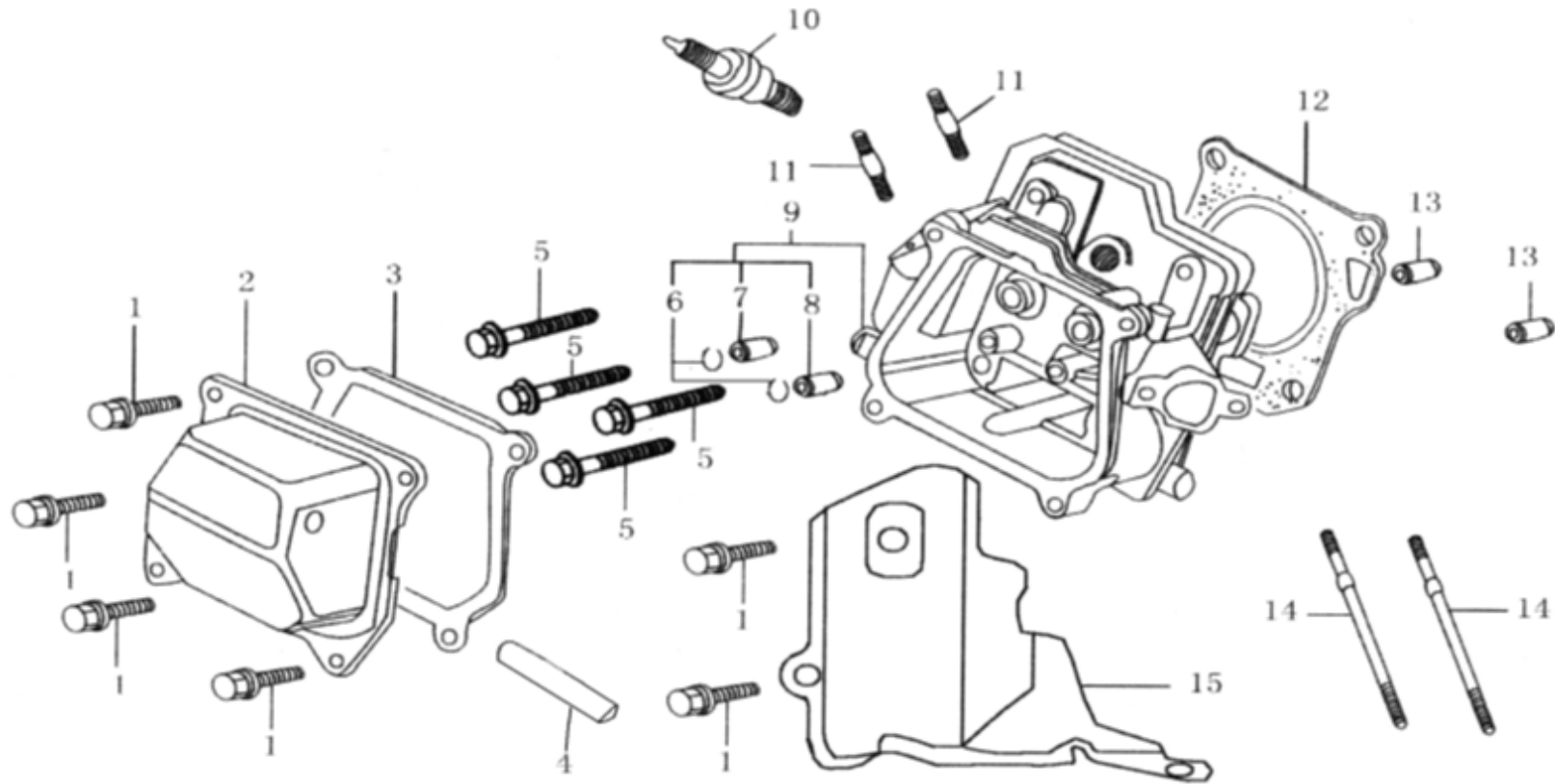
SL NO	PART NO	DESCRIPTION
1	AM-170FP-RC-EA01	Washer,plain
2	AM-170FP-RC-EA02	Pin Lock
3	AM-170FP-RC-EA03	Moving Staff
4	AM-170FP-RC-EA04	Bearing Radial Ball
5	AM-170FP-RC-EA05	Drain Plug Washer
6	AM-170FP-RC-EA06	Drain Plug Washer
7	AM-170FP-RC-EA07	Oil Seal
8	AM-170FP-RC-EA08	Crankcase
9	AM-170FP-RC-EA09	Nut Flange,
10	AM-170FP-RC-EA10	Oil Sensor Assembly
11	AM-170FP-RC-EA11	Bolt
12	AM-170FP-RC-EA12	Wasse,Driven Gear Plain
13	AM-170FP-RC-EA13	Speed Regulating Gear
14	AM-170FP-RC-EA14	Speed Regulating Shaft
15	AM-170FP-RC-EA15	Clip
16	AM-170FP-RC-EA16	Clidig Sleeve

CRANKCASE COVER ASSEMBLY - B



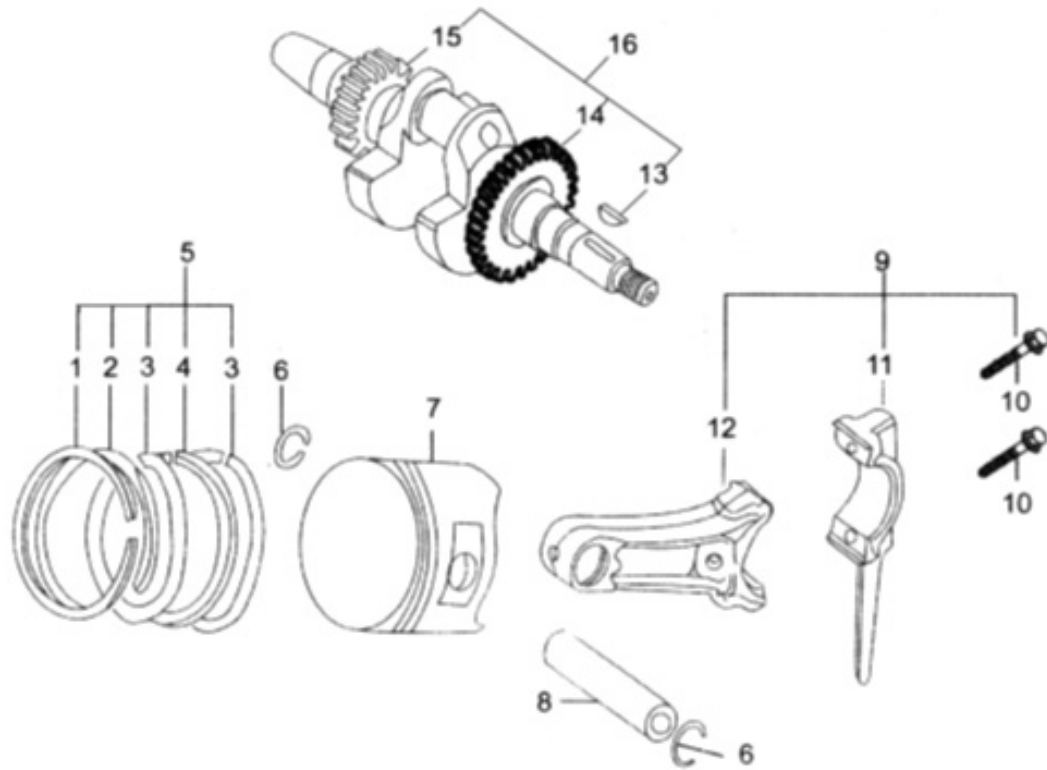
SL NO	PART NO	DESCRIPTION
1	AM-170FP-RC-EB01	Packing,Oil Filler
2	AM-170FP-RC-EB02	Cover Assembly, Crankcase
3	AM-170FP-RC-EB03	Bolt
4	AM-170FP-RC-EB04	Bearing,Radial Ball
5	AM-170FP-RC-EB05	Oil Seal
6	AM-170FP-RC-EB06	Set Pin
7	AM-170FP-RC-EB07	Crankcase Gasket
8	AM-170FP-RC-EB08	Oil Filler Assembly

CYLINDER HEAD&CYLINDER HEAD COVER ASSEMBLY - C



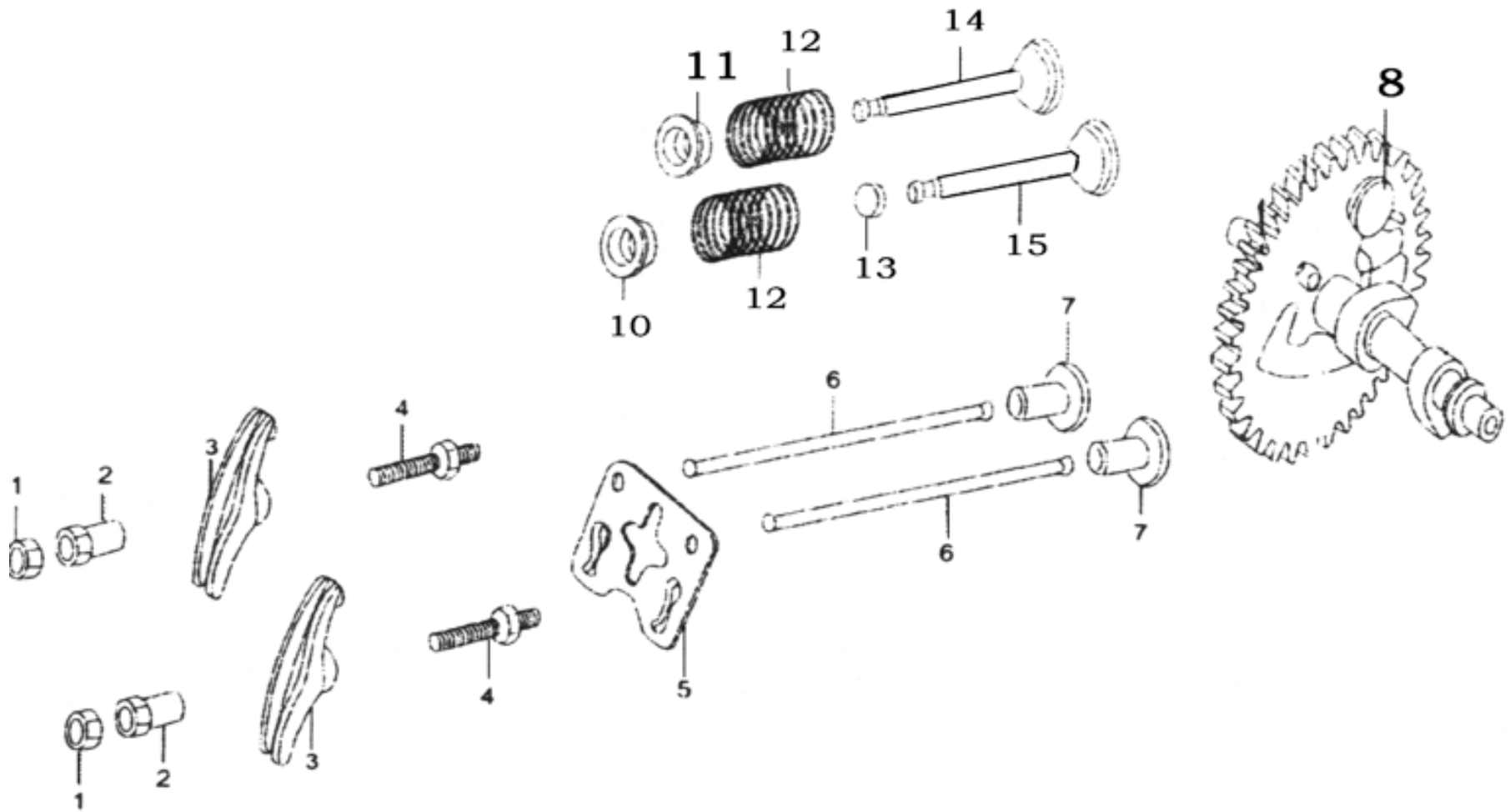
SL NO	PART NO	DESCRIPTION	SL NO	PART NO	DESCRIPTION
1	AM-170FP-RC-EC01	Bolt Flange	9	AM-170FP-RC-EC09	Cylinder Head Assembly
2	AM-170FP-RC-EC02	Cylinder Head Cover Assembly	10	AM-170FP-RC-EC10	Spark Plug
3	AM-170FP-RC-EC03	Cylinder Head Cover Gasket	11	AM-170FP-RC-EC11	Bolt Stud
4	AM-170FP-RC-EC04	Tube, Breather	12	AM-170FP-RC-EC12	Gasket Cylinder Head
5	AM-170FP-RC-EC05	Bolt Flange	13	AM-170FP-RC-EC13	Set Pin
6	AM-170FP-RC-EC06	Clip,Exhaust Valve Guide	14	AM-170FP-RC-EC14	Bolt Stud
7	AM-170FP-RC-EC07	Exhaust Valve Guide	15	AM-170FP-RC-EC15	Air-leading Cover
8	AM-170FP-RC-EC08	Intake Valve Guide			

CRANKSHAFT PISTON&TIE-ROD - D



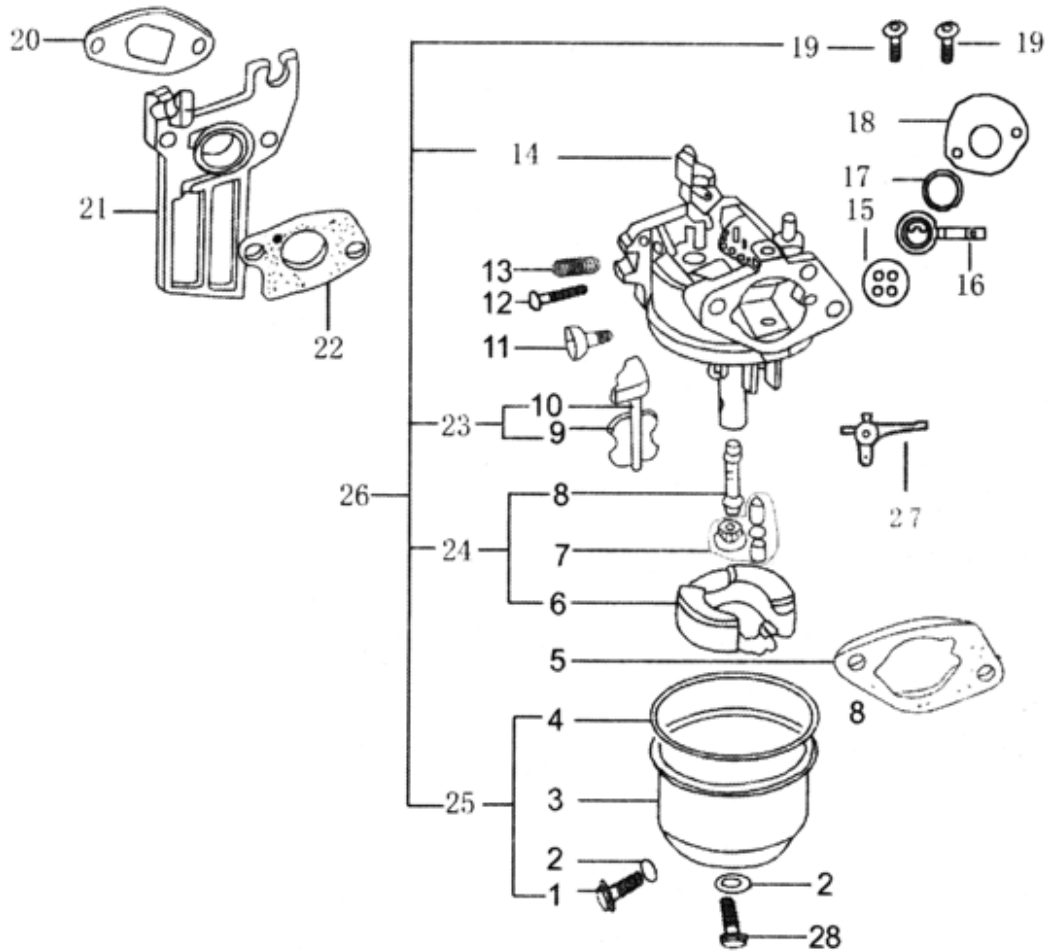
SL NO	PART NO	DESCRIPTION
1	AM-170FP-RC-ED01	Piston Ring A
2	AM-170FP-RC-ED02	Piston Ring B
3	AM-170FP-RC-ED03	Side Ring
4	AM-170FP-RC-ED04	Wave Ring
5	AM-170FP-RC-ED05	Scraper Ring Set,Piston
6	AM-170FP-RC-ED06	Piston Pin Circlip Clip
7	AM-170FP-RC-ED07	Piston
8	AM-170FP-RC-ED08	Piston Pin
9	AM-170FP-RC-ED09	Tie-rod Assembly
10	AM-170FP-RC-ED10	Bolt, Tie-rod
11	AM-170FP-RC-ED11	Tie- rod Cover
12	AM-170FP-RC-ED12	Tie-rod
13	AM-170FP-RC-ED13	Woodruff Key
14	AM-170FP-RC-ED14	Regulating Driving Gear
15	AM-170FP-RC-ED15	Timing Gear
16	AM-170FP-RC-ED16	Crankshaft Assembly

COMBINATION OF SHAFT & VALVE ROCKER - E



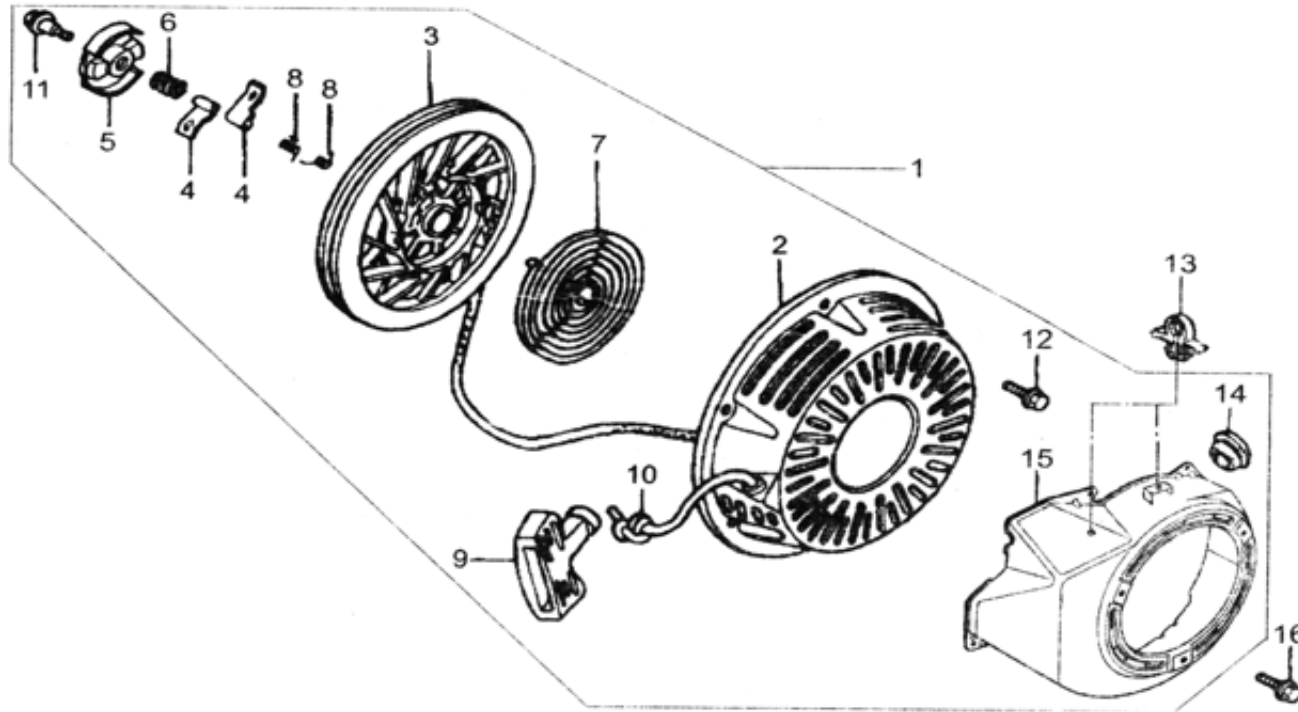
SL NO	PART NO	DESCRIPTION	SL NO	PART NO	DESCRIPTION
1	AM-170FP-RC-EE01	Lock Nut			
2	AM-170FP-RC-EE02	AHPusting Nut			
3	AM-170FP-RC-EE03	Valve Rocker Arm			
4	AM-170FP-RC-EE04	Fastening Bolt			
5	AM-170FP-RC-EE05	Push Rod Guide			
6	AM-170FP-RC-EE06	Rod Push			
7	AM-170FP-RC-EE07	Tappet Litter Valve			
8	AM-170FP-RC-EE08	Camshaft Assembly			
9	AM-170FP-RC-EE09	Cap			
10	AM-170FP-RC-EE10	Returrer,Intake Valve			
11	AM-170FP-RC-EE11	Returrer,Exhaust Valve			
12	AM-170FP-RC-EE12	Valve Spring			
13	AM-170FP-RC-EE13	Exhaust valve spring lower seat			
14	AM-170FP-RC-EE14	Intake Valve			
15	AM-170FP-RC-EE15	Exhaust Valve			

CARBURETOR ASSEMBLY - F



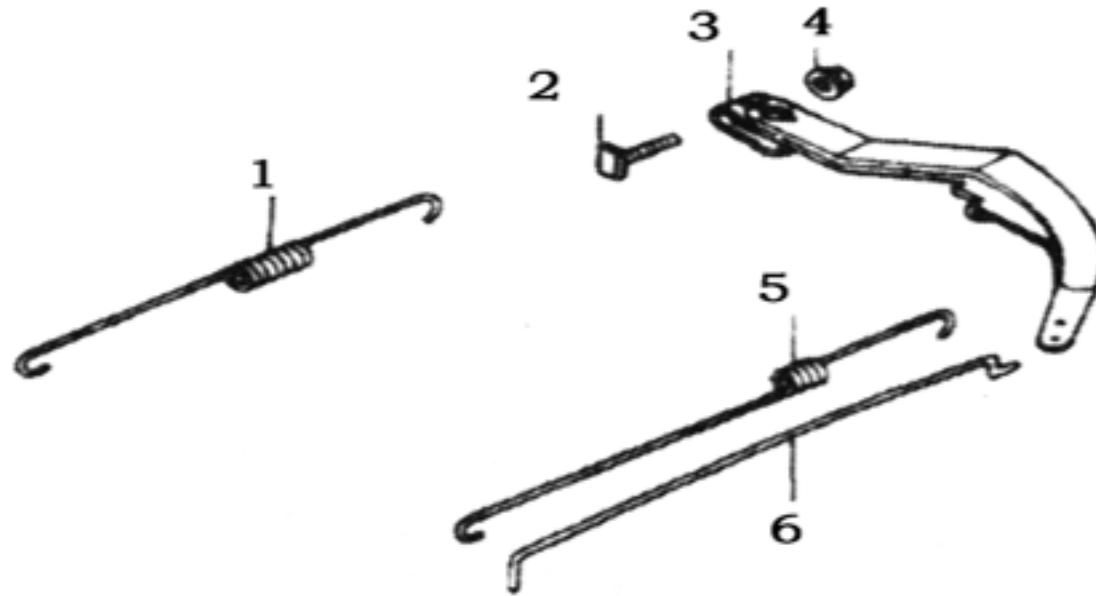
SL NO	PART NO	DESCRIPTION
1	AM-170FP-RC-EG01	Seal
2	AM-170FP-RC-EG02	Control Arm Throttle
3	AM-170FP-RC-EG03	Washer
4	AM-170FP-RC-EG04	Cover
5	AM-170FP-RC-EG05	Bolt
6	AM-170FP-RC-EG06	Inlet Gasket
7	AM-170FP-RC-EG07	Connecting Block, Carburetor
8	AM-170FP-RC-EG08	Carburetor Gasket
9	AM-170FP-RC-EG09	Choke Unit
10	AM-170FP-RC-EG10	Float Needle Assembly
11	AM-170FP-RC-EG11	Float Chamber
12	AM-170FP-RC-EG12	Carburetor Assembly
13	AM-170FP-RC-EG13	Choke Switch
14	AM-170FP-RC-EG14	Bolt Flange

RECOIL STARTER - H



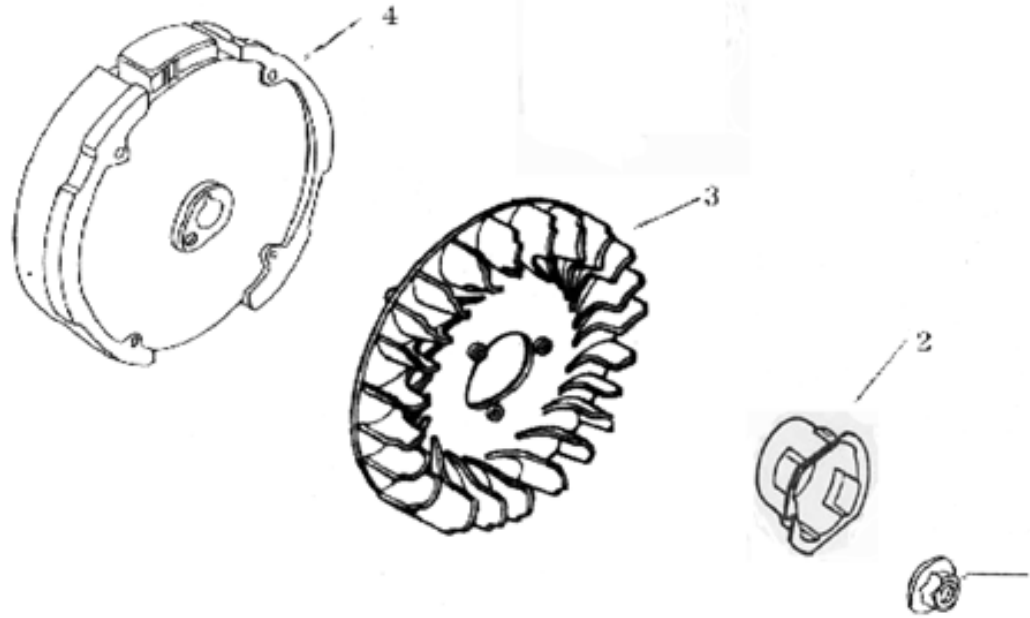
SL NO	PART NO	DESCRIPTION	SL NO	PART NO	DESCRIPTION
1	AM-170FP-RC-EH01	Recoil Sarter	9	AM-170FP-RC-EH09	Grip Starter
2	AM-170FP-RC-EH02	Case Comp Recoil Starter	10	AM-170FP-RC-EH10	Rope
3	AM-170FP-RC-EH03	Starter	11	AM-170FP-RC-EH11	Setting Screw
4	AM-170FP-RC-EH04	Ratchet	12	AM-170FP-RC-EH12	Bolt Flange
5	AM-170FP-RC-EH05	Goive Reachet	13	AM-170FP-RC-EH13	O-Ring
6	AM-170FP-RC-EH06	Friction Spring	14	AM-170FP-RC-EH14	Grommet
7	AM-170FP-RC-EH07	Spiral Spring	15	AM-170FP-RC-EH15	Fancase
8	AM-170FP-RC-EH08	Spring Renturn	16	AM-170FP-RC-EH16	Bolt Flange

REGULATING CONTROL SYSTEM - J



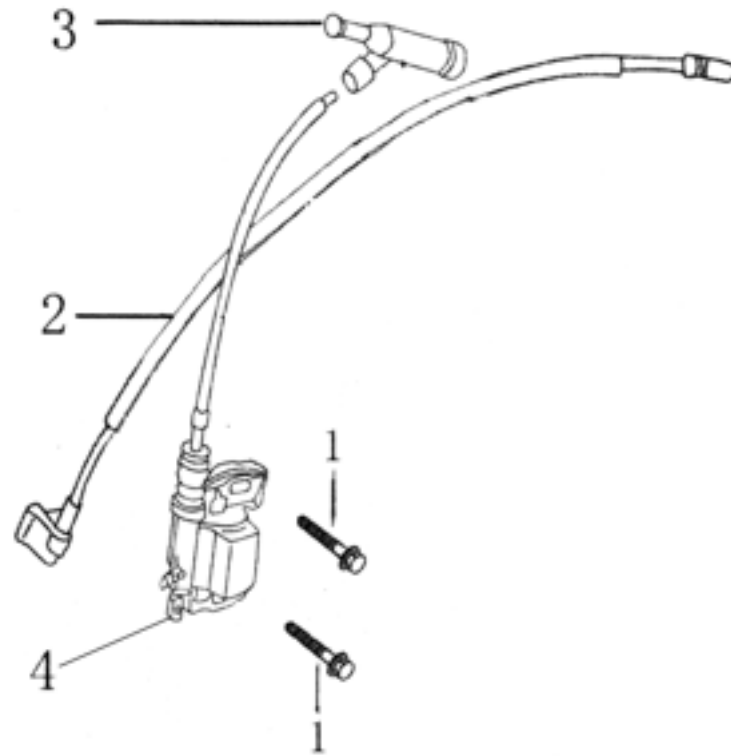
SL NO	PART NO	DESCRIPTION	SL NO	PART NO	DESCRIPTION
1	AM-170FP-RC-EJ01	Back Spring B			
2	AM-170FP-RC-EJ02	Lock Bolt			
3	AM-170FP-RC-EJ03	Speed Regulating Arm			
4	AM-170FP-RC-EJ04	Nut Flange			
5	AM-170FP-RC-EJ05	Fine Regulating Spring C			
6	AM-170FP-RC-EJ06	Pulling Rod			
7	AM-170FP-RC-EJ07	Speed Regulating Assembly			

FLYWHEEL - K



SL NO	PART NO	DESCRIPTION	SL NO	PART NO	DESCRIPTION
1	AM-170FP-RC-EK01	Nut			
2	AM-170FP-RC-EK02	Starting Cup			
3	AM-170FP-RC-EK03	Flywheel Fan			
4	AM-170FP-RC-EK04	Flywheel			

IGNITION COIL - L



SL NO	PART NO	DESCRIPTION	SL NO	PART NO	DESCRIPTION
1	AM-170FP-RC-EL01	Bolt Flange			
2	AM-170FP-RC-EL02	Flameout Wire			
3	AM-170FP-RC-EL03	Spark Plug Cap			
4	AM-170FP-RC-EL04	Ignition Coil			

WARRANTY CARD

CUSTOMER COPY

DATE _____	DATE OF DELIVERY _____	DEALERS OFFICIAL SEAL _____	DEALERS SIGN _____
PURCHASERS NAME & ADDRESS _____ _____	CUSTOMER SIGN _____		
PRODUCT NAME _____	PRODUCT SERIAL NO. _____	INVOICE/DN NO. _____	
I/Will accept the terms and conditions of warranty as in the warranty card			

DEALERS COPY

DATE _____	DATE OF DELIVERY _____	DEALERS OFFICIAL SEAL _____	DEALERS SIGN _____
PURCHASERS NAME & ADDRESS _____ _____	CUSTOMER SIGN _____		
PRODUCT NAME _____	PRODUCT SERIAL NO. _____	INVOICE/DN NO. _____	
I/Will accept the terms and conditions of warranty as in the warranty card			

COMPANY COPY

DATE _____	DATE OF DELIVERY _____	DEALERS OFFICIAL SEAL _____	DEALERS SIGN _____
PURCHASERS NAME & ADDRESS _____ _____	CUSTOMER SIGN _____		
PRODUCT NAME _____	PRODUCT SERIAL NO. _____	INVOICE/DN NO. _____	
I/Will accept the terms and conditions of warranty as in the warranty card			

1. LIMITED WARRANTY PERIOD : For a period of six months from the date of Sale / delivery of the product which ever is earlier. 2. LIMITED WARRANTY OBLIGATION : Replacement of defective part(s) by authorized dealer are free of charges. If found defective by reasons of defective material / poor workmanship, parts will be replaced and there will be no value re-imburement. 3. TERMS & CONDITIONS : a. Claims under warranty will be accepted on submission of Warranty Card duly filled and stamped by authorized dealer together with the original purchase document. : b. Shipping / transportation / Incidental charges incurred in replacing defective parts under warranty shall be borne by the purchaser

WARRANTY null & void if

- (i) Lack of maintenance, (ii) Incorrect use of the machine or tampering, (iii) Use of non-genuine spare parts, (iv) Usage of acids, solvents, or any flammable materials, (v) Non-usage of filter water / clear water / soft water & using water above 40°C temperature, (vi) While using the pressure washers to draw water which is contaminated with dust & solvents (eg. paint thinners, gasoline, oil, etc.), (vii) Repair done by unauthorized service people, (viii) Those parts subject to wear & tear due to normal operations and plastic parts, rubber items etc, (ix) Loose connections, faulty electrical fixtures & fluctuations in power supply.
- 4. Should any failure occur during or after the warranty period, customer does not have the right to interrupt payment / price discount.
- 5. Incidental or consequential damages like inconvenience commercial loss, loss of tie, mental agony etc.
- 6. Loss of any nature due to operation or non-operation is not covered under warranty.
- 7. All free service are at Dealer's service point only.
- 8. Warranty ceases if service is not done periodically.
- 9. The attached card should be completed and returned to Ratnagiri Impex Pvt. Ltd. for registration immediately after sale / delivery.
- 10. The warranty is void unless you register the warranty card with Ratnagiri Impex Pvt. Ltd.
- 11. The decision of Ratnagiri Impex Pvt. Ltd., in settling the warranty is final in all respects.
- 12. All disputes are subject to Bangalore Courts Jurisdiction

1. LIMITED WARRANTY PERIOD : For a period of six months from the date of Sale / delivery of the product which ever is earlier. 2. LIMITED WARRANTY OBLIGATION : Replacement of defective part(s) by authorized dealer are free of charges. If found defective by reasons of defective material / poor workmanship, parts will be replaced and there will be no value re-imburement. 3. TERMS & CONDITIONS : a. Claims under warranty will be accepted on submission of Warranty Card duly filled and stamped by authorized dealer together with the original purchase document. : b. Shipping / transportation / Incidental charges incurred in replacing defective parts under warranty shall be borne by the purchaser.

WARRANTY null & void if

- (i) Lack of maintenance, (ii) Incorrect use of the machine or tampering, (iii) Use of non-genuine spare parts, (iv) Usage of acids, solvents, or any flammable materials, (v) Non-usage of filter water / clear water / soft water & using water above 40°C temperature, (vi) While using the pressure washers to draw water which is contaminated with dust & solvents (eg. paint thinners, gasoline, oil, etc.), (vii) Repair done by unauthorized service people, (viii) Those parts subject to wear & tear due to normal operations and plastic parts, rubber items etc, (ix) Loose connections, faulty electrical fixtures & fluctuations in power supply.
- 4. Should any failure occur during or after the warranty period, customer does not have the right to interrupt payment / price discount.
- 5. Incidental or consequential damages like inconvenience commercial loss, loss of tie, mental agony etc.
- 6. Loss of any nature due to operation or non-operation is not covered under warranty.
- 7. All free service are at Dealer's service point only.
- 8. Warranty ceases if service is not done periodically.
- 9. The attached card should be completed and returned to Ratnagiri Impex Pvt. Ltd. for registration immediately after sale / delivery.
- 10. The warranty is void unless you register the warranty card with Ratnagiri Impex Pvt. Ltd.
- 11. The decision of Ratnagiri Impex Pvt. Ltd., in settling the warranty is final in all respects.
- 12. All disputes are subject to Bangalore Courts Jurisdiction

1. LIMITED WARRANTY PERIOD : For a period of six months from the date of Sale / delivery of the product which ever is earlier. 2. LIMITED WARRANTY OBLIGATION : Replacement of defective part(s) by authorized dealer are free of charges. If found defective by reasons of defective material / poor workmanship, parts will be replaced and there will be no value re-imburement. 3. TERMS & CONDITIONS : a. Claims under warranty will be accepted on submission of Warranty Card duly filled and stamped by authorized dealer together with the original purchase document. : b. Shipping / transportation / Incidental charges incurred in replacing defective parts under warranty shall be borne by the purchaser.

WARRANTY null & void if

- (i) Lack of maintenance, (ii) Incorrect use of the machine or tampering, (iii) Use of non-genuine spare parts, (iv) Usage of acids, solvents, or any flammable materials, (v) Non-usage of filter water / clear water / soft water & using water above 40°C temperature, (vi) While using the pressure washers to draw water which is contaminated with dust & solvents (eg. paint thinners, gasoline, oil, etc.), (vii) Repair done by unauthorized service people, (viii) Those parts subject to wear & tear due to normal operations and plastic parts, rubber items etc, (ix) Loose connections, faulty electrical fixtures & fluctuations in power supply.
- 4. Should any failure occur during or after the warranty period, customer does not have the right to interrupt payment / price discount.
- 5. Incidental or consequential damages like inconvenience commercial loss, loss of tie, mental agony etc.
- 6. Loss of any nature due to operation or non-operation is not covered under warranty.
- 7. All free service are at Dealer's service point only.
- 8. Warranty ceases if service is not done periodically.
- 9. The attached card should be completed and returned to Ratnagiri Impex Pvt. Ltd. for registration immediately after sale / delivery.
- 10. The warranty is void unless you register the warranty card with Ratnagiri Impex Pvt. Ltd.
- 11. The decision of Ratnagiri Impex Pvt. Ltd., in settling the warranty is final in all respects.
- 12. All disputes are subject to Bangalore Courts Jurisdiction



FREE SERVICE COUPON (30DAYS/30HRS. WHICHEVER IS EARLIER)

MODEL

SERIAL NUMBER

PDI DATE

SERVICE NO.

PURCHASE BILL NO.

DATE

DEALERS OFFICE SEAL

- 1. Check and test the fuel mixture
- 3. Check , clean and adjust the spark plug
- 5. Check and sparken the cutting tools
- 7. Start and check the noise, vibration, loosen etc..

OPERATIONS

- 2. check and clean the air filter
- 4. Check and adjust the carburetor tuning
- 6. Product familirisation on usage
- 8. Routine maintenance and shortage.

FREE SERVICE COUPON (30DAYS/30HRS. WHICHEVER IS EARLIER)

MODEL

SERIAL NUMBER

PDI DATE

SERVICE NO.

PURCHASE BILL NO.

DATE

DEALERS OFFICE SEAL

- 1. Check and test the fuel mixture
- 3. Check , clean and adjust the spark plug
- 5. Check and sparken the cutting tools
- 7. Start and check the noise, vibration, loosen etc..

OPERATIONS

- 2. check and clean the air filter
- 4. Check and adjust the carburetor tuning
- 6. Product familirisation on usage
- 8. Routine maintenance and shortage.

FREE SERVICE COUPON (30DAYS/30HRS. WHICHEVER IS EARLIER)

MODEL

SERIAL NUMBER

PDI DATE

SERVICE NO.

PURCHASE BILL NO.

DATE

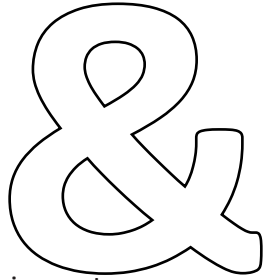
DEALERS OFFICE SEAL

- 1. Check and test the fuel mixture
- 3. Check , clean and adjust the spark plug
- 5. Check and sparken the cutting tools
- 7. Start and check the noise, vibration, loosen etc..

OPERATIONS

- 2. check and clean the air filter
- 4. Check and adjust the carburetor tuning
- 6. Product familirisation on usage
- 8. Routine maintenance and shortage.

DOS



DONTs

attempting to use the equipments.

1. Always read the instruction manual supplied along with the equipments and understand the correct installation and operating procedures before

trousers and jackets while operating potentially dangerous machines
2. It is important to use the personal protection equipments such as head helmet with visor, ear defenders, goggles, safety gloves, cut resistant shoes,
3. Avoid untrained persons using the equipments. Children must not be allowed to handle these equipments
4. Always use genuine spares and accessories in repairs and usage to derive maximum life of the equipments.
5. Always keep the equipments in good working condition to minimize loss of output as well as to reduce the pollution and save the environment
6. Do not use the machine within range of persons unless they wear protective clothing
7. Do not operate the machine when fatigued or under the influence of alcohol or drugs
8. For more query kindly contact for our Service Center/Dealer/ franchise

NO. 1 CHOICE OF FARMERS SINCE 1999



Marketed by.
**ratnagiri
impex**
BRINGING YOU THE FUTURE... NOW

RATNAGIRI IMPEX PVT., LTD.,

Annapurna House, #1 / 1G, 7th Cross, New
Guddadahalli

Mysore Road, Bangalore - 560 026

Missed Call : 7393 938 938

Email: ask@agrimart.in