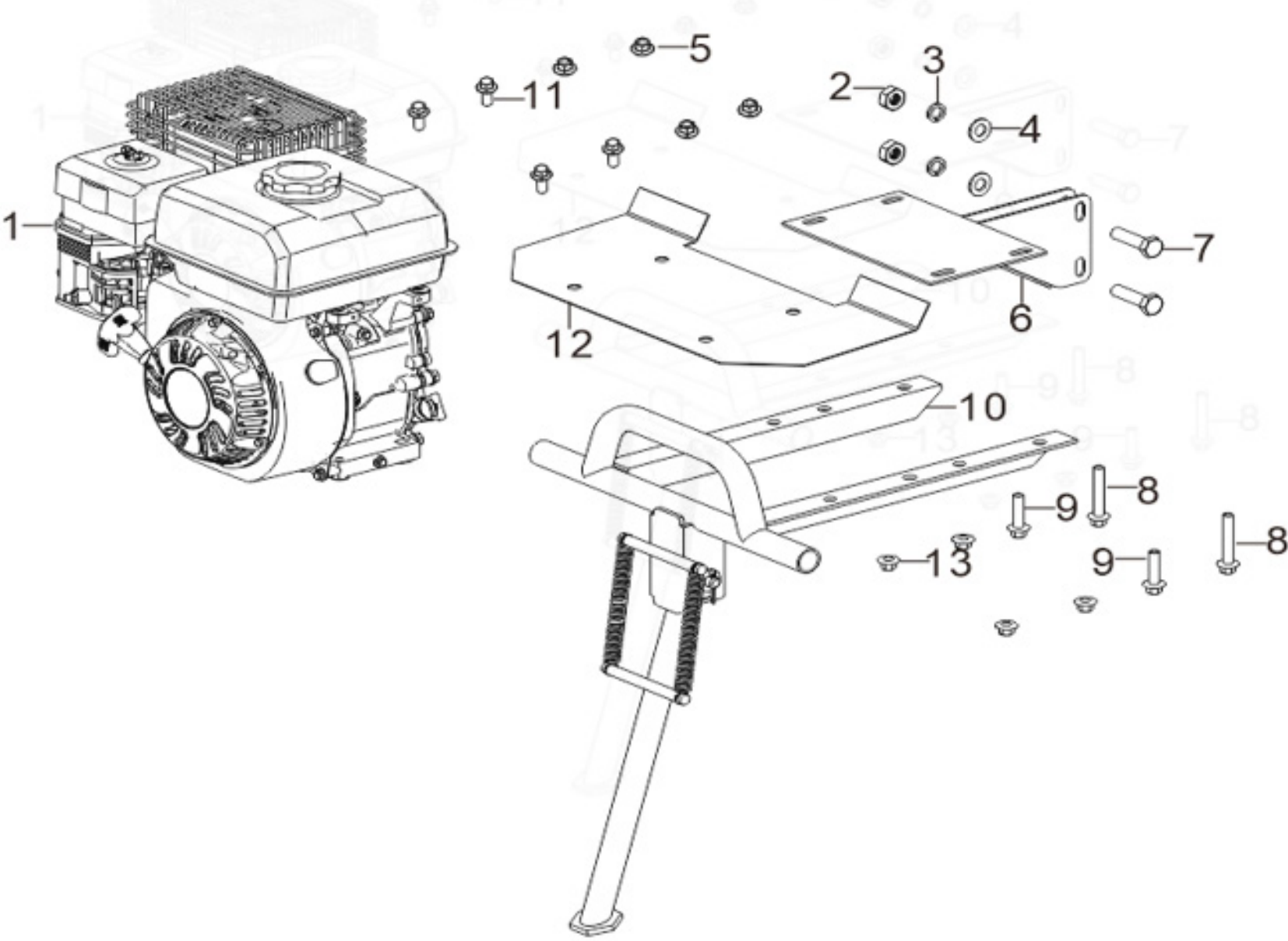


## INTERCULTIVATOR / POWER WEEDER AM-RTP-5PH

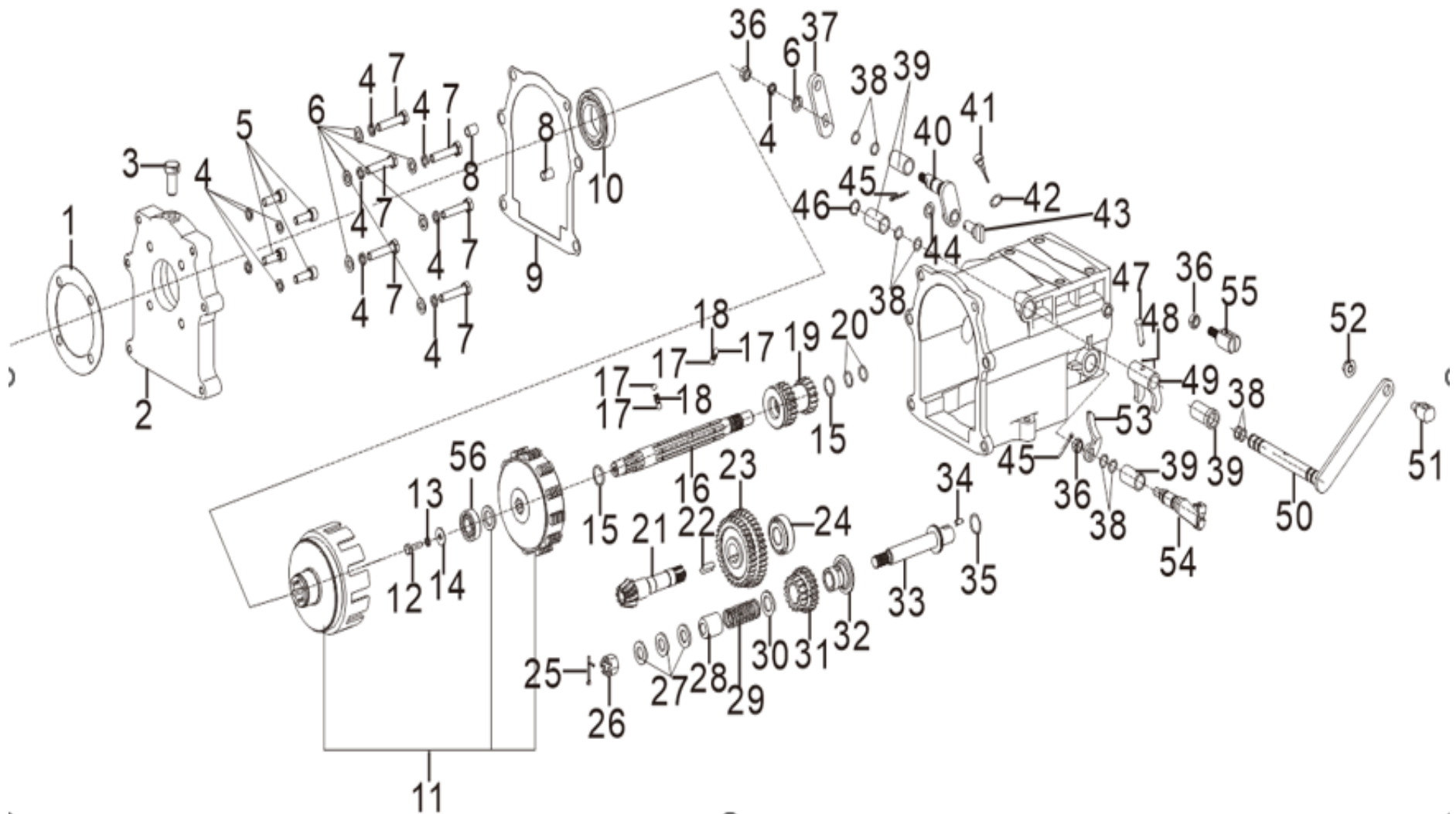


ENGINE SUPPORT - TA



SL NO	PART NO	DESCRIPTION	SL NO	PART NO	DESCRIPTION
1	AM-RTP-5PH-TA01	HEXAGON NUT			
2	AM-RTP-5PH-TA02	FLAT WASHER			
3	AM-RTP-5PH-TA03	FLAT WASHER			
4	AM-RTP-5PH-TA04	HEXAGON NUT WITH FLANGE			
5	AM-RTP-5PH-TA05	ENGINE CONNETING SEAT			
6	AM-RTP-5PH-TA06	HEXAGONAL HEAD BOLT			
7	AM-RTP-5PH-TA07	BOLT			
8	AM-RTP-5PH-TA08	BOLT			
9	AM-RTP-5PH-TA09	GUARD			
10	AM-RTP-5PH-TA10	BOLT			
11	AM-RTP-5PH-TA11	MINI TILLER FENDER			
12	AM-RTP-5PH-TA12	HEXAGON NUT WITH FLANGE			

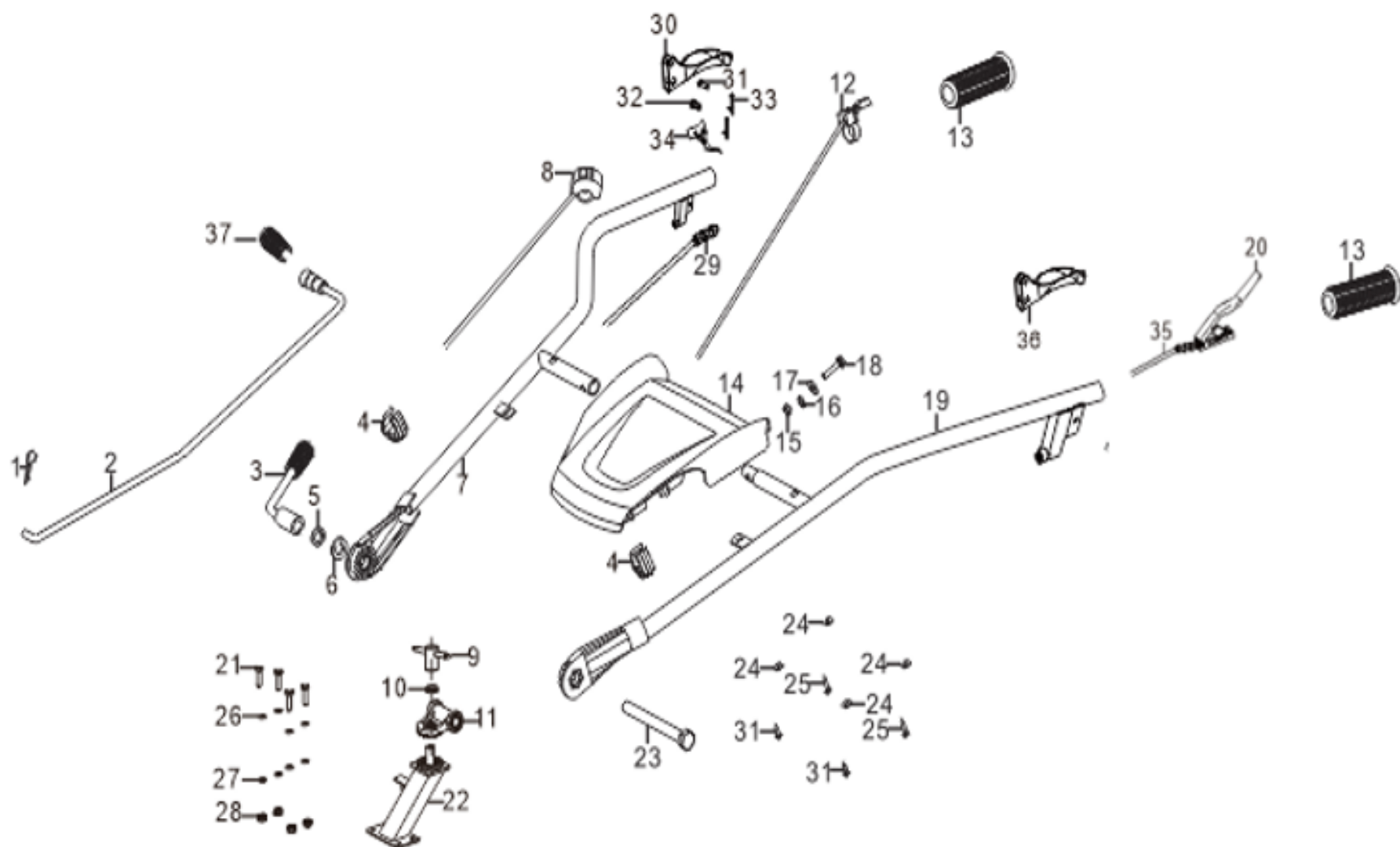
UPPER GEAR BOX -B



SL NO	PART NO	DESCRIPTION	SL NO	PART NO	DESCRIPTION
1	AM-RTP-5PH-TB01	ENGINE SEAL GASKET	17	AM-RTP-5PH-TB17	BALL, STEEL
2	AM-RTP-5PH-TB02	FLANGE	18	AM-RTP-5PH-TB18	STOPPER SPRING
3	AM-RTP-5PH-TB03	PRESSURE RELIEF BOLT	19	AM-RTP-5PH-TB19	GEAR
4	AM-RTP-5PH-TB04	FLAT WASHER	20	AM-RTP-5PH-TB20	O-TYPE RUBBER SEAL RING
5	AM-RTP-5PH-TB05	HEXAGON SOCKET HEAD CAP SCREW	21	AM-RTP-5PH-TB21	COUNTERSHAFT
6	AM-RTP-5PH-TB06	FLAT WASHER	22	AM-RTP-5PH-TB22	Flat key
7	AM-RTP-5PH-TB07	HEXAGONAL HEAD BOLT	23	AM-RTP-5PH-TB23	GEAR
8	AM-RTP-5PH-TB08	POSITION PIN	24	AM-RTP-5PH-TB24	TAPERED ROLLER BEARINGS
9	AM-RTP-5PH-TB09	FLANGE SEAL GASKET	25	AM-RTP-5PH-TB25	COTTER PIN
10	AM-RTP-5PH-TB10	DEEP GROOVE BALL BEARING	26	AM-RTP-5PH-TB26	HEXAGON SLOTTED NUT
11	AM-RTP-5PH-TB11	CLUTCH ASSEMBLY	27	AM-RTP-5PH-TB27	FLAT WASHER
12	AM-RTP-5PH-TB12	HEXAGONAL HEAD BOLT	28	AM-RTP-5PH-TB28	REVERSE GEAR STOP COLLAR
13	AM-RTP-5PH-TB13	FLAT WASHER	29	AM-RTP-5PH-TB29	REVERSE GEAR SPRING
14	AM-RTP-5PH-TB14	EXTRA LARGE GASKET - GRADE C	30	AM-RTP-5PH-TB30	FLAT WASHER
15	AM-RTP-5PH-TB15	STILL RING	31	AM-RTP-5PH-TB31	GEAR
16	AM-RTP-5PH-TB16	MAIN AXLE	32	AM-RTP-5PH-TB32	REVERSE GEAR COLLAR

SL NO	PART NO	DESCRIPTION	SL NO	PART NO	DESCRIPTION
33	AM-RTP-5PH-TB33	REVERSE GEAR SHAFT	49	AM-RTP-5PH-TB49	SHIFTS FORK
34	AM-RTP-5PH-TB34	PIN	50	AM-RTP-5PH-TB50	SHIFTS FORK SUBASSEMBLY
35	AM-RTP-5PH-TB35	O-TYPE RUBBER SEAL RING	51	AM-RTP-5PH-TB51	INHAUL CABLE BASE
36	AM-RTP-5PH-TB36	HEXAGON NUT	52	AM-RTP-5PH-TB52	HEXAGON NUT WITH FLANGE
37	AM-RTP-5PH-TB37	SHIFT ARM	53	AM-RTP-5PH-TB53	SHIFTS FORK
38	AM-RTP-5PH-TB38	O-TYPE RUBBER SEAL RING	54	AM-RTP-5PH-TB54	SHIFTS FORK SUBASSEMBLY
39	AM-RTP-5PH-TB39	BUSH	55	AM-RTP-5PH-TB55	INHAUL CABLE BASE
40	AM-RTP-5PH-TB40	SHIFT FORK SUBASSEMBLY	56	AM-RTP-5PH-TB56	DEEP GROOVE BALL BEARING
41	AM-RTP-5PH-TB41	OIL DIPSTICK			
42	AM-RTP-5PH-TB42	O-TYPE RUBBER SEAL RING			
43	AM-RTP-5PH-TB43	SHIFT FORK			
44	AM-RTP-5PH-TB44	FLAT WASHER			
45	AM-RTP-5PH-TB45	COTTER PIN			
46	AM-RTP-5PH-TB46	CIRCLIP FOR SHAFT - TYPE A			
47	AM-RTP-5PH-TB47	PIN SHAFT			
48	AM-RTP-5PH-TB48	PIN			

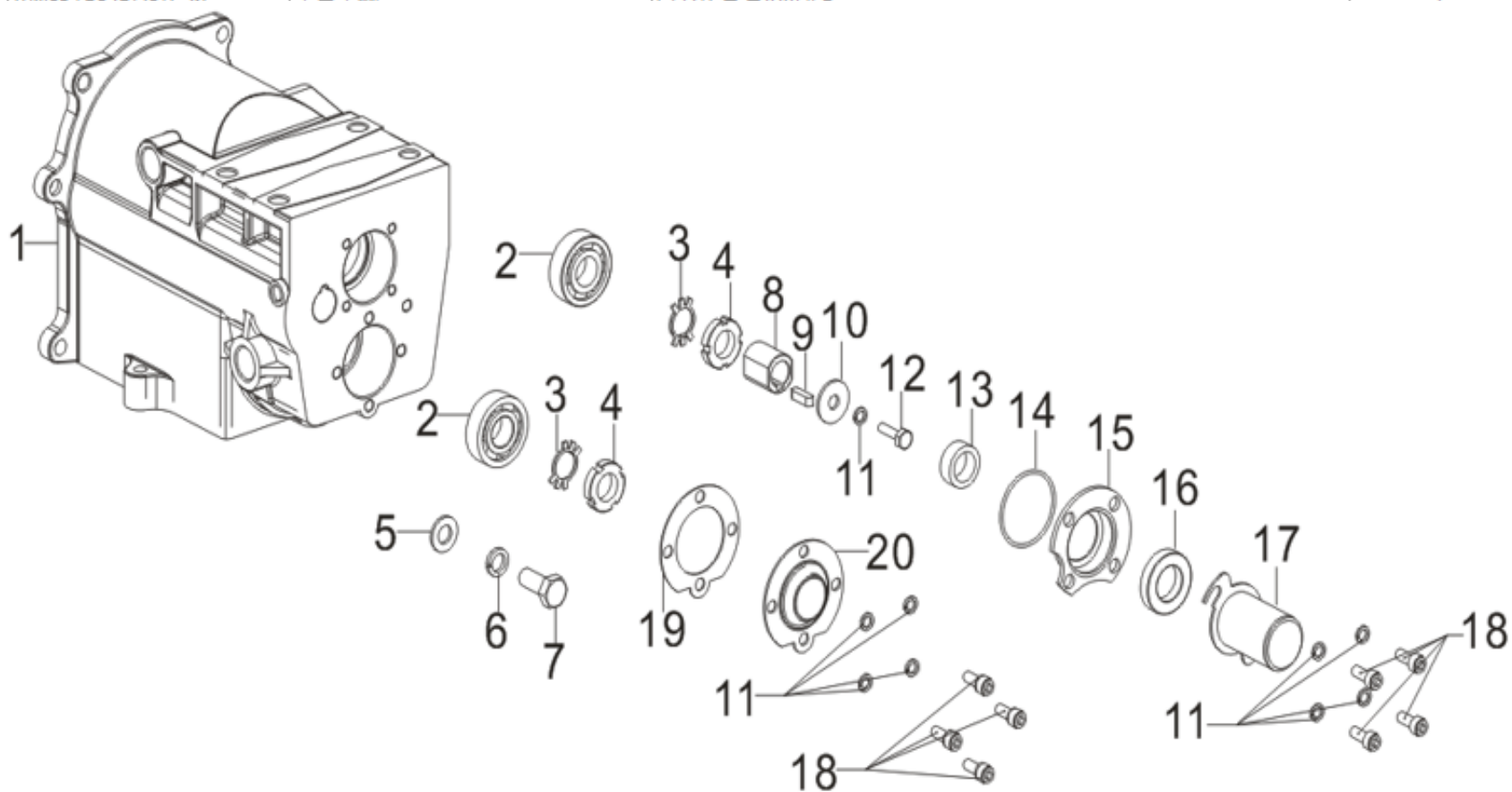
## HANDLE - TC



SL NO	PART NO	DESCRIPTION	SL NO	PART NO	DESCRIPTION
1	AM-RTP-5PH-TC01	R PIN	20	AM-RTP-5PH-TC20	EMERGENCY STOP DEVICE
2	AM-RTP-5PH-TC02	GEAR LEVER	21	AM-RTP-5PH-TC21	HEXAGONAL HEAD BOLT
3	AM-RTP-5PH-TC03	LOCK HANDLE	22	AM-RTP-5PH-TC22	ARMREST ASSEMBLY
4	AM-RTP-5PH-TC04	WIRE CLIP	23	AM-RTP-5PH-TC23	HEXAGONAL HEAD BOLT
5	AM-RTP-5PH-TC05	FLAT WASHER	24	AM-RTP-5PH-TC24	FLAT WASHER
6	AM-RTP-5PH-TC06	FLAT WASHER	25	AM-RTP-5PH-TC25	SCREW
7	AM-RTP-5PH-TC07	HANDLE TUBE ASSY	26	AM-RTP-5PH-TC26	FLAT WASHER
8	AM-RTP-5PH-TC08	STOP ENGINE WIRE	27	AM-RTP-5PH-TC27	FLAT WASHER
9	AM-RTP-5PH-TC09	LOCK HANDLE	28	AM-RTP-5PH-TC28	HEXAGON NUT
10	AM-RTP-5PH-TC10	FLAT WASHER	29	AM-RTP-5PH-TC29	REVERSE GEAR CABLE
11	AM-RTP-5PH-TC11	TOOTH DISK PLATE	30	AM-RTP-5PH-TC30	CLUTCH HANDLE
12	AM-RTP-5PH-TC12	THROTILE COCK ASSEMBLY	31	AM-RTP-5PH-TC31	PIN SHAFT
13	AM-RTP-5PH-TC13	SLEEVE, HANDLE RUBBER	32	AM-RTP-5PH-TC32	PIN SHAFT
14	AM-RTP-5PH-TC14	PANEL	33	AM-RTP-5PH-TC33	COTTER PIN
15	AM-RTP-5PH-TC15	TYPE 1 NON-METALLIC IN-SERT HEXAGON LOCK NUT	34	AM-RTP-5PH-TC34	SCREW
16	AM-RTP-5PH-TC16	STANDARD SPRING WASHER	35	AM-RTP-5PH-TC35	CLUTCH CABLE
17	AM-RTP-5PH-TC17	FLAT WASHER	36	AM-RTP-5PH-TC36	CLUTCH HANDLE
18	AM-RTP-5PH-TC18	HEXAGONAL HEAD BOLT	37	AM-RTP-5PH-TC37	RUBBER SLEEVE
19	AM-RTP-5PH-TC19	FLAT WASHER			

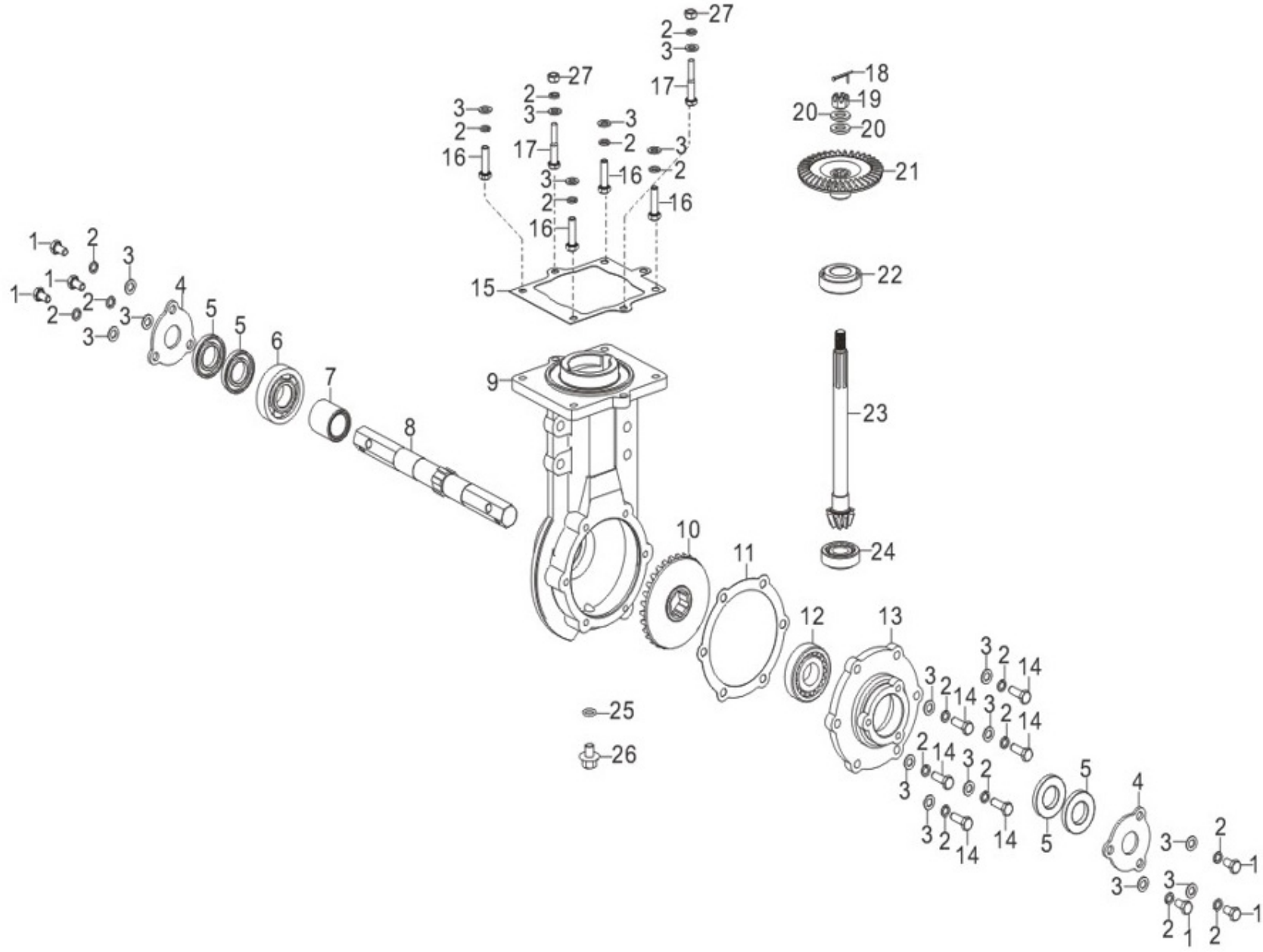


## REAR UPPER GEAR BOX - TD



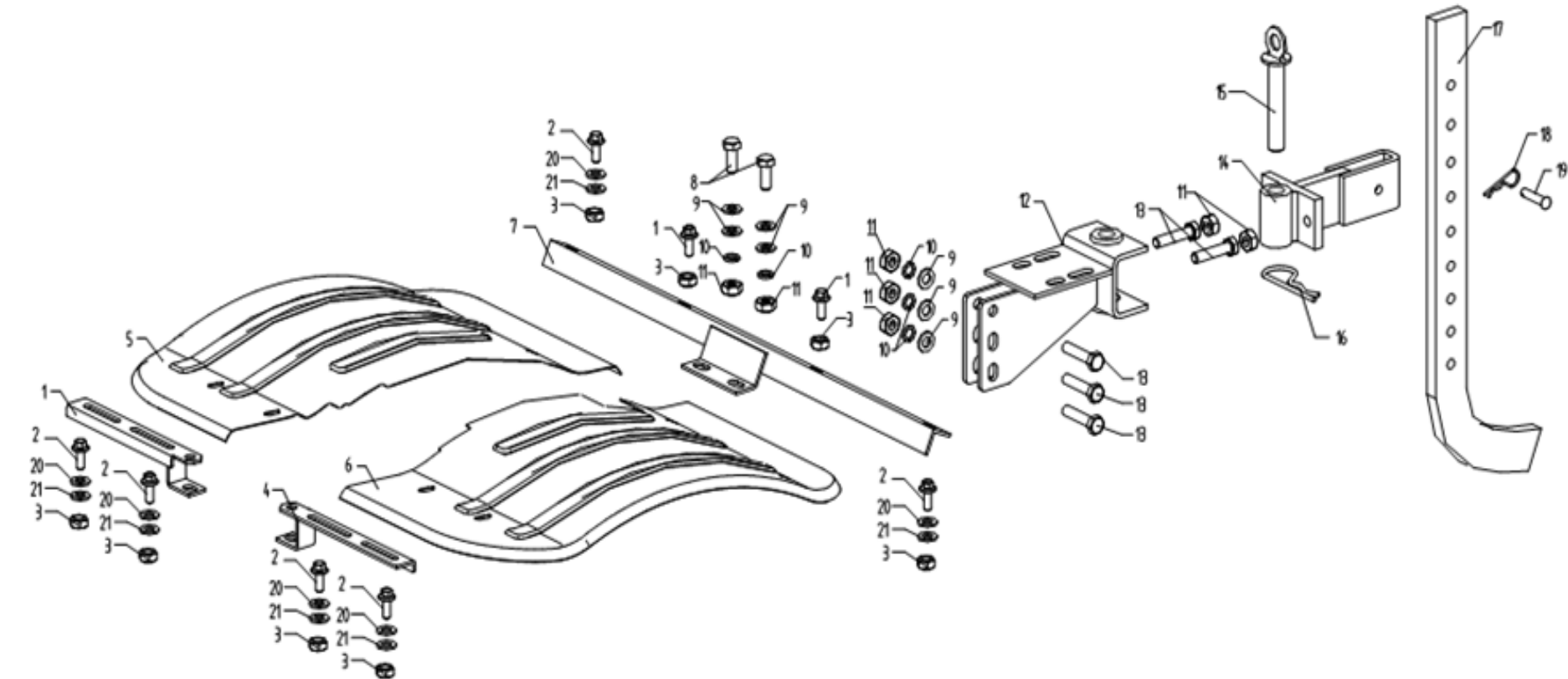
SL NO.	PART NO	DESCRIPTION	SL NO	PART NO	DESCRIPTION
1	AM-RTP-5PH-TD01	TRANSMISSION GEAR BOX CASE	11	AM-RTP-5PH-TD11	FLAT WASHER
2	AM-RTP-5PH-TD02	DEEP GROOVE BALL BEARING	12	AM-RTP-5PH-TD12	HEXAGONAL HEAD BOLT
3	AM-RTP-5PH-TD03	LOCK WASHER FOR ROUND NUTS	13	AM-RTP-5PH-TD13	BUSH
4	AM-RTP-5PH-TD04	ROUND NUT	14	AM-RTP-5PH-TD14	O-TYPE RUBBER SEAL RING
5	AM-RTP-5PH-TD05	FLAT WASHER	15	AM-RTP-5PH-TD15	MAIN SHAFT GLAND
6	AM-RTP-5PH-TD06	STANDARD SPRING WASHER	16	AM-RTP-5PH-TD16	OIL SEAL
7	AM-RTP-5PH-TD07	HEXAGONAL HEAD BOLT	17	AM-RTP-5PH-TD17	MAIN SHAFT SAFETY GUARD
8	AM-RTP-5PH-TD08	FLAT KEY SET	18	AM-RTP-5PH-TD18	SCREW
9	AM-RTP-5PH-TD09	FLAT KEY	19	AM-RTP-5PH-TD19	GASKET
10	AM-RTP-5PH-TD10	EXTRA LARGE GASKET - GRADE C	20	AM-RTP-5PH-TD20	COUNTERSHAFT END COVER

LOWER GEAR BOX - TE



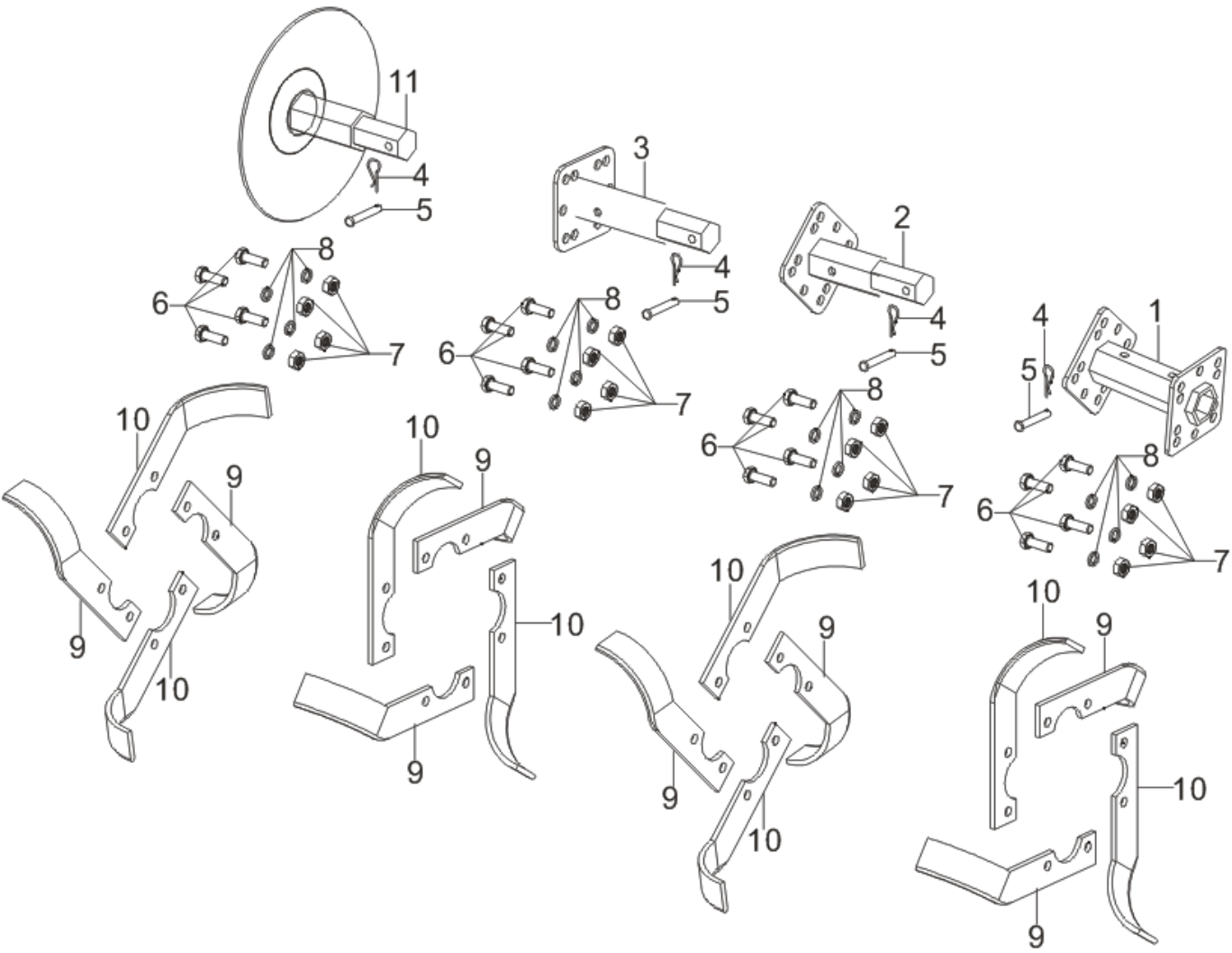
SL NO.	PART NO	DESCRIPTION	SL NO	PART NO	DESCRIPTION
1	AM-RTP-5PH-TE01	HEXAGONAL HEAD BOLT	14	AM-RTP-5PH-TE14	HEXAGONAL HEAD BOLT
2	AM-RTP-5PH-TE02	FLAT WASHER	15	AM-RTP-5PH-TE15	GASKET
3	AM-RTP-5PH-TE03	FLAT WASHER	16	AM-RTP-5PH-TE16	HEXAGONAL HEAD BOLT
4	AM-RTP-5PH-TE04	OUTPUT SHAFT DUST-PROOF COVER	17	AM-RTP-5PH-TE17	HEXAGONAL HEAD BOLT
5	AM-RTP-5PH-TE05	OIL SEAL	18	AM-RTP-5PH-TE18	COTTER PIN
6	AM-RTP-5PH-TE06	DEEP GROOVE BALL BEARING	19	AM-RTP-5PH-TE19	NUT
7	AM-RTP-5PH-TE07	BUSH	20	AM-RTP-5PH-TE20	FLAT WASHER
8	AM-RTP-5PH-TE08	OUTPUT SHAFT	21	AM-RTP-5PH-TE21	DRIVEN BEVEL GEAR
9	AM-RTP-5PH-TE09	LOWER TRANSMISSION GEAR BOX CASE	22	AM-RTP-5PH-TE22	TAPERED ROLLER BEARINGS
10	AM-RTP-5PH-TE10	TRANSPORTATION BEVEL GEAR	23	AM-RTP-5PH-TE23	TRANSPORTATION BEVEL GEAR SHAFT
11	AM-RTP-5PH-TE11	GASKET	24	AM-RTP-5PH-TE24	TAPERED ROLLER BEARINGS
12	AM-RTP-5PH-TE12	TAPERED ROLLER BEARINGS	25	AM-RTP-5PH-TE25	O-TYPE RUBBER SEAL RING
13	AM-RTP-5PH-TE13	TRANSPORTATION BOX END COVER	26	AM-RTP-5PH-TE26	DRAIN PLUG BOLT

FENDER - TF



SL NO.	PART NO	DESCRIPTION	SL NO	PART NO	DESCRIPTION
1	AM-RTP-5PH-TF01	FRONT FENDER SUPPORT	12	AM-RTP-5PH-TF12	TRAILING BODY
2	AM-RTP-5PH-TF02	BOLT	13	AM-RTP-5PH-TF13	HEXAGONAL HEAD BOLT
3	AM-RTP-5PH-TF03	NUT	14	AM-RTP-5PH-TF14	CONNECTION FRAME
4	AM-RTP-5PH-TF04	FRONT FENDER SUPPORT	15	AM-RTP-5PH-TF15	PIN SHAFT
5	AM-RTP-5PH-TF05	MINI-TILLER FENDER	16	AM-RTP-5PH-TF16	R PIN
6	AM-RTP-5PH-TF06	MINI-TILLER FENDER	17	AM-RTP-5PH-TF17	DAMPING ARM
7	AM-RTP-5PH-TF07	REAR FENDER SUPPORT	18	AM-RTP-5PH-TF18	R PIN
8	AM-RTP-5PH-TF08	HEXAGONAL HEAD BOLT	19	AM-RTP-5PH-TF19	PIN SHAFT
9	AM-RTP-5PH-TF09	FLAT WASHER	20	AM-RTP-5PH-TF20	WASHER 2 FLAT
10	AM-RTP-5PH-TF10	FLAT WASHER	21	AM-RTP-5PH-TF21	RUBBER GASKET
11	AM-RTP-5PH-TF11	HEXAGON NUT			

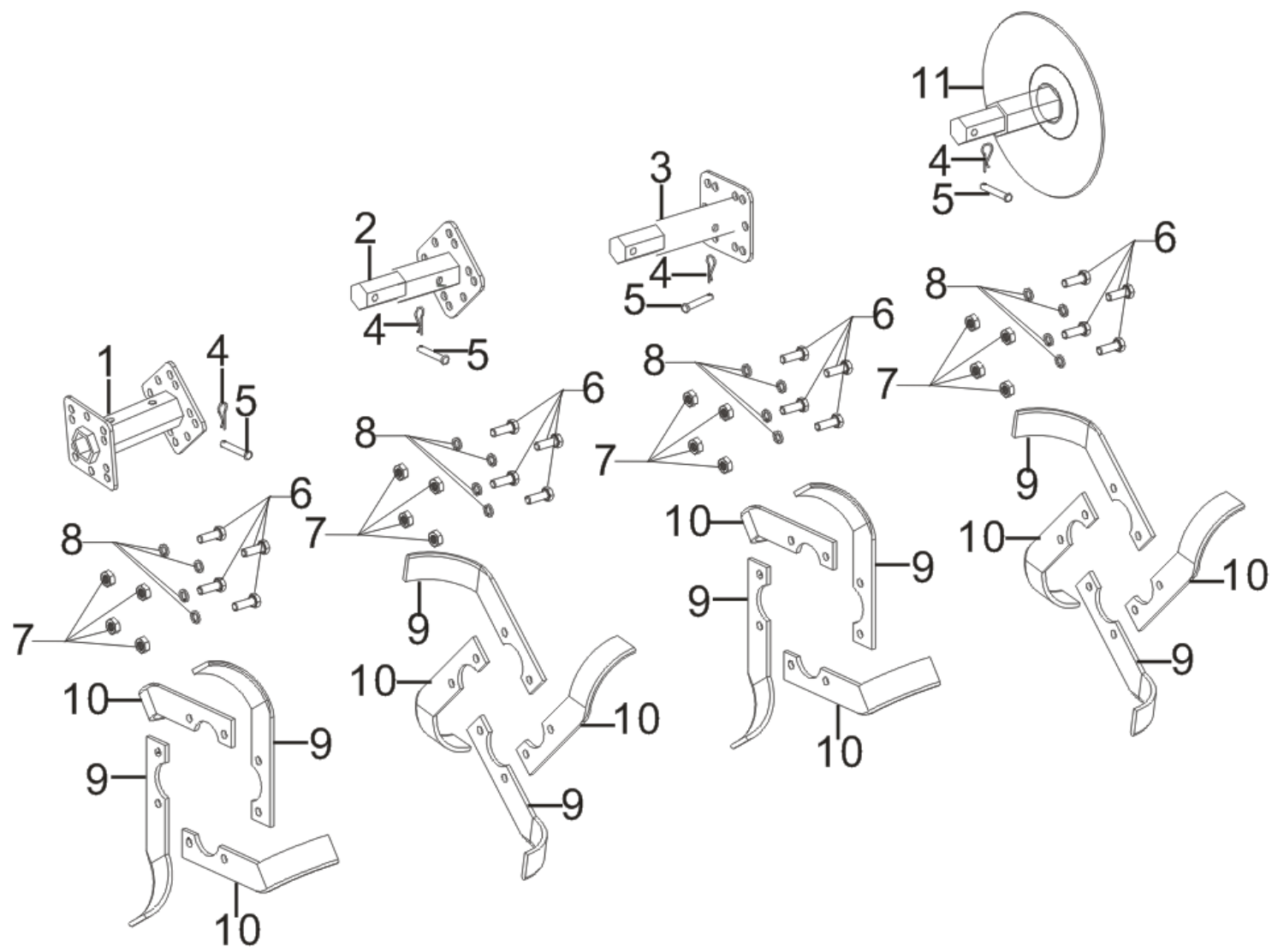
**RIGHT BLADES - TG**



SL NO.	PART NO	DESCRIPTION	SL NO	PART NO	DESCRIPTION
1	AM-RTP-5PH-TG01	CYLINDER			
2	AM-RTP-5PH-TG02	CYLINDER			
3	AM-RTP-5PH-TG03	CYLINDER			
4	AM-RTP-5PH-TG04	PIN SHAFT			
5	AM-RTP-5PH-TG05	R PIN			
6	AM-RTP-5PH-TG06	HEXAGONAL HEAD BOLT			
7	AM-RTP-5PH-TG07	HEXAGON NUT			
8	AM-RTP-5PH-TG08	FLAT WASHER			
9	AM-RTP-5PH-TG09	ROTARY BLADE			
10	AM-RTP-5PH-TG10	ROTARY BLADE			
11	AM-RTP-5PH-TG11	TRIMMING WHEEL			

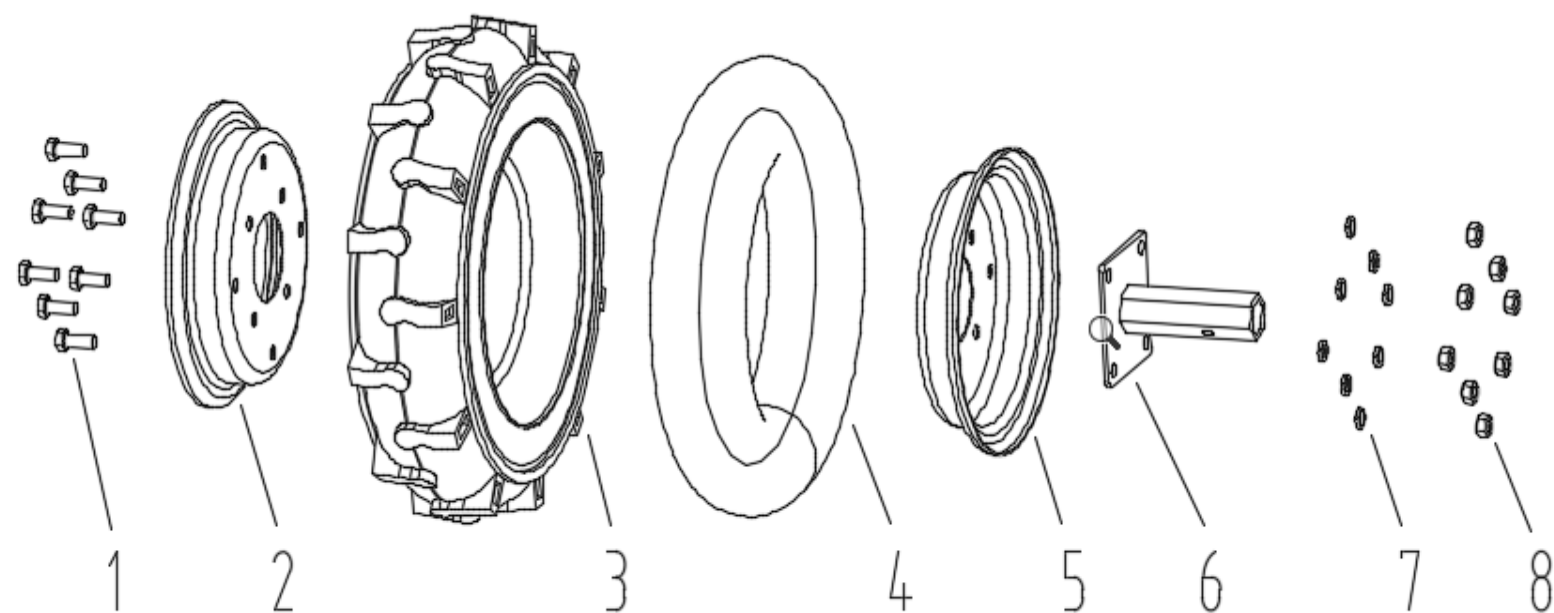


## LEFT BLADES - TH



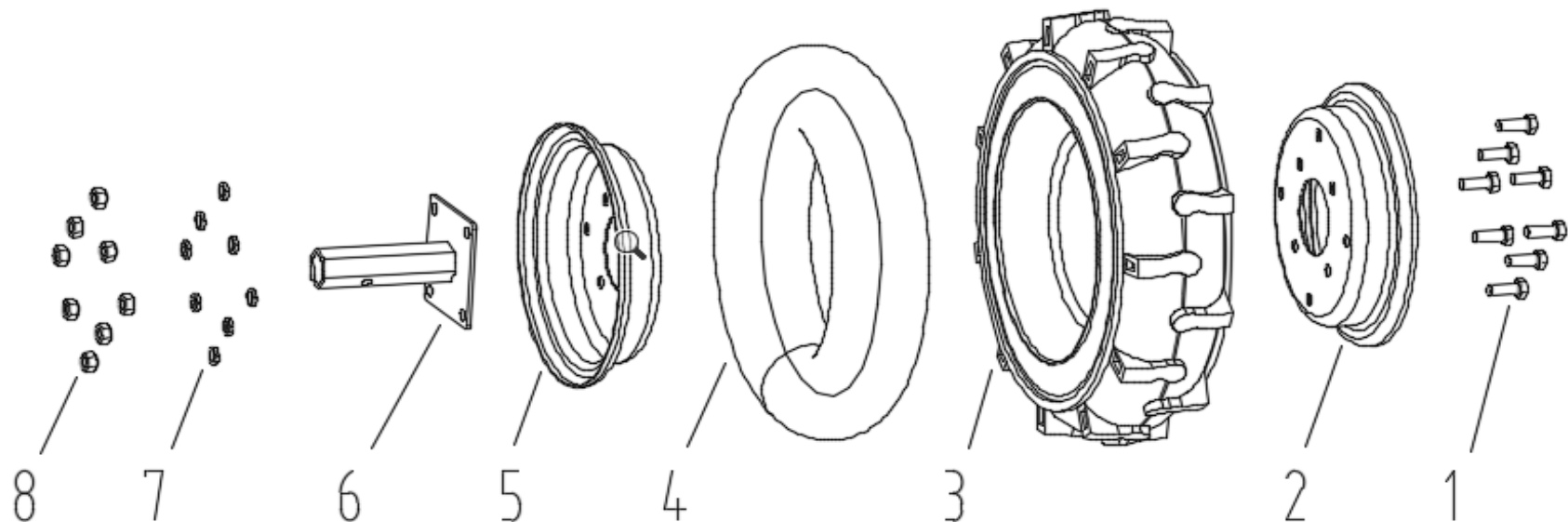
SL NO.	PART NO	DESCRIPTION	SL NO	PART NO	DESCRIPTION
1	AM-RTP-5PH-TH01	CYLINDER			
2	AM-RTP-5PH-TH02	CYLINDER			
3	AM-RTP-5PH-TH03	CYLINDER			
4	AM-RTP-5PH-TH04	PIN SHAFT			
5	AM-RTP-5PH-TH05	R PIN			
6	AM-RTP-5PH-TH06	HEXAGONAL HEAD BOLT			
7	AM-RTP-5PH-TH07	HEXAGON NUT			
8	AM-RTP-5PH-TH08	FLAT WASHER			
9	AM-RTP-5PH-TH09	ROTARY BLADE			
10	AM-RTP-5PH-TH10	ROTARY BLADE			
11	AM-RTP-5PH-TH11	TRIMMING WHEEL			

LEFT WHEEL ASSY - TJ



SL NO.	PART NO	DESCRIPTION	SL NO	PART NO	DESCRIPTION
1	AM-RTP-5PH-TJ01	HEXAGONAL HEAD BOLT	5	AM-RTP-5PH-TJ05	WHEEL HUB
2	AM-RTP-5PH-TJ02	WHEEL HUB	6	AM-RTP-5PH-TJ06	REAR WHEEL SHAFT
3	AM-RTP-5PH-TJ03	OUTER TUBE	7	AM-RTP-5PH-TJ07	FLAT WASHER
4	AM-RTP-5PH-TJ04	INNER TUBE	8	AM-RTP-5PH-TJ08	HEXAGON NUT

## RIGHT WHEEL ASSY - TK



SL NO.	PART NO	DESCRIPTION	SL NO	PART NO	DESCRIPTION
1	AM-RTP-5PH-TK01	HEXAGONAL HEAD BOLT	5	AM-RTP-5PH-TK05	WHEEL HUB
2	AM-RTP-5PH-TK02	WHEEL HUB	6	AM-RTP-5PH-TK06	REAR WHEEL SHAFT
3	AM-RTP-5PH-TK03	OUTER TUBE	7	AM-RTP-5PH-TK07	FLAT WASHER
4	AM-RTP-5PH-TK04	INNER TUBE	8	AM-RTP-5PH-TK08	HEXAGON NUT

## INSPECTION & MAINTAINANCE

For safety use, make sure the machine is cleaned every three months. Before working, make sure to inspect the filter and the nozzle and ensure there is no impurity. After working, make sure there is no water in the pump and the hose.

If the machine needs to be repaired in the guarantee period, please return the machine to the shop. You need to provide the certificate of purchase on order to repair or get the substitute.

Before packing, the machine should be cleaned, then use closed packaging, packaging should be firm. Store the machine in dry place.

For transportation safety. The machine should comply with ISTA.

Do not dispose of electrical machines as unsorted municipal waste, use separate collection facilities.

If electrical machines are disposed of in landfills or dumps, hazardous substances can leak into the ground water and get into the food chain, damaging your health and well being.

When replacing old machines with new ones, the retailer is legally obligated to take back your old machine for disposals at least free of charge.

# WARRANTY CARD

## CUSTOMER COPY

DATE _____	DATE OF DELIVERY _____	DEALERS OFFICIAL SEAL	DEALERS SIGN _____
PURCHASERS NAME & ADDRESS _____ _____ _____	<div>CUSTOMER SIGN</div>	<div></div>	
PRODUCT NAME	PRODUCT SERIAL NO.	INVOICE/DN NO.	
<div></div>	<div></div>	<div></div>	
I/Will accept the terms and conditions of warranty as in the warranty card			

## DEALERS COPY

DATE _____	DATE OF DELIVERY _____	DEALERS OFFICIAL SEAL	DEALERS SIGN _____
PURCHASERS NAME & ADDRESS _____ _____ _____	<div>CUSTOMER SIGN</div>	<div></div>	
PRODUCT NAME	PRODUCT SERIAL NO.	INVOICE/DN NO.	
<div></div>	<div></div>	<div></div>	
I/Will accept the terms and conditions of warranty as in the warranty card			

## COMPANY COPY

DATE _____	DATE OF DELIVERY _____	DEALERS OFFICIAL SEAL	DEALERS SIGN _____
PURCHASERS NAME & ADDRESS _____ _____ _____	<div>CUSTOMER SIGN</div>	<div></div>	
PRODUCT NAME	PRODUCT SERIAL NO.	INVOICE/DN NO.	
<div></div>	<div></div>	<div></div>	
I/Will accept the terms and conditions of warranty as in the warranty card			

1. LIMITED WARRANTY PERIOD : For a period of six months from the date of Sale / delivery of the product which ever is earlier. 2. LIMITED WARRANTY OBLIGATION : Replacement of defective part(s) by authorized dealer are free of charges. If found defective by reasons of defective material / poor workmanship, parts will be replaced and there will be no value re-imbursement. 3. TERMS & CONDITIONS : a. Claims under warranty will be accepted on submission of Warranty Card duly filled and stamped by authorized dealer together with the original purchase document. : b. Shipping / transportation / Incidental charges incurred in replacing defective parts under warranty shall be borne by the purchaser

WARRANTY null & void if  
(i) Lack of maintenance, (ii) Incorrect use of the machine or tampering, (iii) Use of non-genuine spare parts, (iv) Usage of acids, solvents, or any flammable materials, (v) Non-usage of filter water / clear water / soft water & using water above 40°C temperature, (vi) While using the pressure washers to draw water which is contaminated with dust & solvents (eg. paint thinners, gasoline, oil, etc.), (vii) Repair done by unauthorized service people, (viii) Those parts subject to wear & tear due to normal operations and plastic parts, rubber items etc, (ix) Loose connections, faulty electrical fixtures & fluctuations in power supply.  
4. Should any failure occur during or after the warranty period, customer does not have the right to interrupt payment / price discount.  
5. Incidental or consequential damages like inconvenience commercial loss, loss of tie, mental agony etc.  
6. Loss of any nature due to operation or non-operation is not covered under warranty.  
7. All free service are at Dealer's service point only.  
8. Warranty ceases if service is not done periodically.  
9. The attached card should be completed and returned to Ratnagiri Impex Pvt. Ltd. for registration immediately after sale / delivery.  
10. The warranty is void unless you register the warranty card with Ratnagiri Impex Pvt. Ltd.  
11. The decision of Ratnagiri Impex Pvt. Ltd., in settling the warranty is final in all respects.  
12. All disputes are subject to Bangalore Courts Jurisdiction

1. LIMITED WARRANTY PERIOD : For a period of six months from the date of Sale / delivery of the product which ever is earlier. 2. LIMITED WARRANTY OBLIGATION : Replacement of defective part(s) by authorized dealer are free of charges. If found defective by reasons of defective material / poor workmanship, parts will be replaced and there will be no value re-imbursement. 3. TERMS & CONDITIONS : a. Claims under warranty will be accepted on submission of Warranty Card duly filled and stamped by authorized dealer together with the original purchase document. : b. Shipping / transportation / Incidental charges incurred in replacing defective parts under warranty shall be borne by the purchaser.  
WARRANTY null & void if  
(i) Lack of maintenance, (ii) Incorrect use of the machine or tampering, (iii) Use of non-genuine spare parts, (iv) Usage of acids, solvents, or any flammable materials, (v) Non-usage of filter water / clear water / soft water & using water above 40°C temperature, (vi) While using the pressure washers to draw water which is contaminated with dust & solvents (eg. paint thinners, gasoline, oil, etc.), (vii) Repair done by unauthorized service people, (viii) Those parts subject to wear & tear due to normal operations and plastic parts, rubber items etc, (ix) Loose connections, faulty electrical fixtures & fluctuations in power supply.  
4. Should any failure occur during or after the warranty period, customer does not have the right to interrupt payment / price discount.  
5. Incidental or consequential damages like inconvenience commercial loss, loss of tie, mental agony etc.  
6. Loss of any nature due to operation or non-operation is not covered under warranty.  
7. All free service are at Dealer's service point only.  
8. Warranty ceases if service is not done periodically.  
9. The attached card should be completed and returned to Ratnagiri Impex Pvt. Ltd. for registration immediately after sale / delivery.  
10. The warranty is void unless you register the warranty card with Ratnagiri Impex Pvt. Ltd.  
11. The decision of Ratnagiri Impex Pvt. Ltd., in settling the warranty is final in all respects.  
12. All disputes are subject to Bangalore Courts Jurisdiction

1. LIMITED WARRANTY PERIOD : For a period of six months from the date of Sale / delivery of the product which ever is earlier. 2. LIMITED WARRANTY OBLIGATION : Replacement of defective part(s) by authorized dealer are free of charges. If found defective by reasons of defective material / poor workmanship, parts will be replaced and there will be no value re-imbursement. 3. TERMS & CONDITIONS : a. Claims under warranty will be accepted on submission of Warranty Card duly filled and stamped by authorized dealer together with the original purchase document. : b. Shipping / transportation / Incidental charges incurred in replacing defective parts under warranty shall be borne by the purchaser.  
WARRANTY null & void if  
(i) Lack of maintenance, (ii) Incorrect use of the machine or tampering, (iii) Use of non-genuine spare parts, (iv) Usage of acids, solvents, or any flammable materials, (v) Non-usage of filter water / clear water / soft water & using water above 40°C temperature, (vi) While using the pressure washers to draw water which is contaminated with dust & solvents (eg. paint thinners, gasoline, oil, etc.), (vii) Repair done by unauthorized service people, (viii) Those parts subject to wear & tear due to normal operations and plastic parts, rubber items etc, (ix) Loose connections, faulty electrical fixtures & fluctuations in power supply.  
4. Should any failure occur during or after the warranty period, customer does not have the right to interrupt payment / price discount.  
5. Incidental or consequential damages like inconvenience commercial loss, loss of tie, mental agony etc.  
6. Loss of any nature due to operation or non-operation is not covered under warranty.  
7. All free service are at Dealer's service point only.  
8. Warranty ceases if service is not done periodically.  
9. The attached card should be completed and returned to Ratnagiri Impex Pvt. Ltd. for registration immediately after sale / delivery.  
10. The warranty is void unless you register the warranty card with Ratnagiri Impex Pvt. Ltd.  
11. The decision of Ratnagiri Impex Pvt. Ltd., in settling the warranty is final in all respects.  
12. All disputes are subject to Bangalore Courts Jurisdiction

**FREE SERVICE COUPON (30DAYS/30HRS. WHICHEVER IS EARLIER)**

MODEL			SERIAL NUMBER		
PDI DATE	SERVICE NO.		PURCHASE BILL NO.		DATE
DEALERS OFFICE SEAL	OPERATIONS				
	<ol style="list-style-type: none"> <li>1. Check and test the fuel mixture</li> <li>2. check and clean the air filter</li> <li>3. Check , clean and adjust the spark plug</li> <li>4. Check and adjust the carburetor tuning</li> <li>5. Check and sparken the cutting tools</li> <li>6. Product familiarisation on usage</li> <li>7. Start and check the noise, vibration, loosen etc..</li> <li>8. Routine maintenance and shortage.</li> </ol>				

**FREE SERVICE COUPON (30DAYS/30HRS. WHICHEVER IS EARLIER)**

MODEL			SERIAL NUMBER		
PDI DATE	SERVICE NO.		PURCHASE BILL NO.		DATE
DEALERS OFFICE SEAL	OPERATIONS				
	<ol style="list-style-type: none"> <li>1. Check and test the fuel mixture</li> <li>2. check and clean the air filter</li> <li>3. Check , clean and adjust the spark plug</li> <li>4. Check and adjust the carburetor tuning</li> <li>5. Check and sparken the cutting tools</li> <li>6. Product familiarisation on usage</li> <li>7. Start and check the noise, vibration, loosen etc..</li> <li>8. Routine maintenance and shortage.</li> </ol>				

**FREE SERVICE COUPON (30DAYS/30HRS. WHICHEVER IS EARLIER)**

MODEL			SERIAL NUMBER		
PDI DATE	SERVICE NO.		PURCHASE BILL NO.		DATE
DEALERS OFFICE SEAL	OPERATIONS				
	<ol style="list-style-type: none"> <li>1. Check and test the fuel mixture</li> <li>2. check and clean the air filter</li> <li>3. Check , clean and adjust the spark plug</li> <li>4. Check and adjust the carburetor tuning</li> <li>5. Check and sparken the cutting tools</li> <li>6. Product familiarisation on usage</li> <li>7. Start and check the noise, vibration, loosen etc..</li> <li>8. Routine maintenance and shortage.</li> </ol>				



# DOS & DONTs

1. Always read the instruction manual supplied along with the equipments and understand the correct installation and operating procedures before attempting to use the equipments.
2. It is important to use the personal protection equipments such as head helmet with visor, ear defenders, goggles, safety gloves, cut resistant shoes, trousers and jackets while operating potentially dangerous machines
3. Avoid untrained persons using the equipments. Children must not be allowed to handle these equipments
4. Always use genuine spares and accessories in repairs and usage to derive maximum life of the equipments.
5. Always keep the equipments in good working condition to minimize loss of output as well as to reduce the pollution and save the environment
6. Do not use the machine within range of persons unless they wear protective clothing
7. Do not operate the machine when fatigued or under the influence of alcohol or drugs
8. When the machine is running, please maintain a constant water supply. Without water circulation will damage the sealing rings of the machine.
9. For more query kindly contact for our Service Center/Dealer/ franchise

# Agrimate Army For Pest Control

ANY WHERE - ANY TIME - ANY CROP



Marketed by:  
**ratnagiri  
impex**  
BRINGING YOU THE FUTURE... NOW

IMPORTED & MARKETING BY,  
**RATNAGIRI IMPEX PVT., LTD.,**

Annapurna House, #1 / 1G, 7th Cross, New  
Guddadahalli Mysore Road, Bangalore - 560 026

Missed Call : 7393 938 938 Email: [ask@agrimart.in](mailto:ask@agrimart.in)