

HONDA
POWER PRODUCTS

GENERAL PURPOSE ENGINE

GX200D

13ZDBDD1

PARTS CATALOGUE

© Honda Siel Power Products Limited, 2013

INDEX



GX200D

FOREWORD INDEX

1

ENGINE GROUP

2

FRAME GROUP

3

PART NUMBER INDEX

4

PART NAME INDEX

5

INSTRUCTION FOR USE OF PARTS CATALOGUE

- **This parts catalogue is compiled for all service parts based on latest information available as on March, 2013.**
 - See parts catalogue news for any revision that is made after **March,2013**
- **Always Specify the part number when ordering the part.**
 - Check the model, type, serial number, maker and the size as needed before ordering a part.
 - Note that the illustrations (part drawings) can differ from the actual parts in shape. They are given just to help you to refer to the parts.
- **When modifications or additions to this parts catalogue are made, a revised edition will be issued at an appropriate time, with successively progressing revision number on the cover. We recommend obtaining such revisions in order to keep your parts catalogue up-to-date at all times. To check whether a parts catalogue revision has been issued, please contact your HONDA distributor.**

CONTENTS

	Address No.
• Instruction for use of parts catalogue	B 1
• How to refer to the part information.....	B 2
• Part catalogue structure.....	B 3
• When the parts were revised.....	B 4
• Abbreviations used in the parts catalogue.....	B 4
• How to check the part block and serial numbers	B 5
• Models, parts catalogue codes and applicable serial Nos..	C 1
• Features of each type	C 2
• Fuel hose, general purpose hoses and vinyl hose	C 3
FLAT RATE SERVICE TIME	C 4
Illustrated index.....	C 5
ENGINE GROUP.....	E 1
PART NO. INDEX.....	L 1
PART NAME INDEX.....	M 1



1

2

3

4

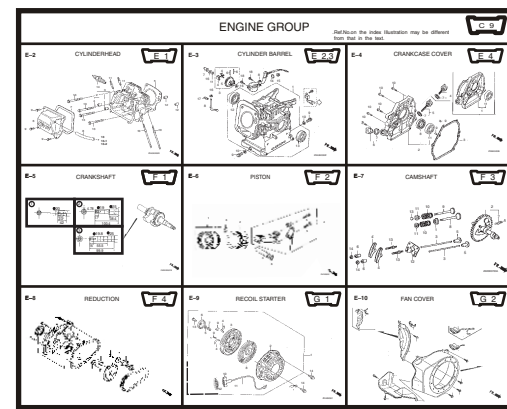
5

HOW TO REFER TO THE PART INFORMATION

B Reference with "Part number index"

E 1 PART NUMBER INDEX					
Part No.	Address	Page	Ref.	Part No.	Address Page Ref.
06000				12216-ZE5-300	D1 17 4
06111-ZL0-000	I2	38	1	12251-ZL0-003	D1 17 5
				12251-ZL0-003	I2 38 1
11000				12310-ZDA-000	D1 17 6
11300-Z4M-630	D3	19	1	12391-ZE1-000	D1 17 7
11300-Z4M-640	D3	19	1	12391-ZE1-000	I2 38 1
11381-ZH8-801	D3	19	2		
11381-ZH8-801	I2	38	1	13000	
				13010-Z4K-004	D5 21 1
12000				13010-Z4M-003	D5 21 1
12000-Z4V-901	D2	18	1	13011-Z4K-004	D5 21 1
12000-Z4V-901	D2	18	1	13011-Z4M-003	D5 21 1
12204-ZE1-306	D1	17	1	13012-Z4K-004	D5 21 1
12205-ZE1-315	D1	17	2	13012-Z4M-003	D5 21 1
12209-Z4M-801	E1	22	1	13013-Z4K-004	D5 21 1
12210-ZL0-020	D1	17	3	13101-Z4V-800	D5 21 2

A Reference with "Illustrated index"



C Reference with "Part name index"

F 1 PART NAME INDEX			
Part Name	Address	Page	Ref.
[A]			
ALERT UNIT, OIL	E4	25	5
ARM, GOVERNOR	G5	35	2
ARM, VALVE ROCKER	E1	22	4
ARRESTER, SPARK	G1	31	4
[B]			
BAG, TOOL, 230 MM	I1	37	6
BARREL ASSY., CYLINDER	D2	18	1
BARREL ASSY., CYLINDER	D2	18	1
BASE COMP., CONTROL (REMOTE)	G5	35	11
BEARING, RADIAL BALL 6205 NSK	D2	18	10
BEARING, RADIAL BALL, 6205 NSK	D3	19	10
BODY, CLEANER (OIL BATH)	F5	30	4
BOLT, CONNECTING ROD	D5	21	5
BOLT, DRAIN PLUG	D2	18	6

E - 2 CYLINDER HEAD

Block No.

Ref. No.

Ref. No.	L.O.N.	(Relative ref. Number)	Description	F.R.T.
1	1111E9	GUIDE, INTAKE VALVE	0.8	
		- INCLUDES: Valve clearance adjustment		
2	1111E6	- Replace intake and exhaust all add	0.2	
	1111E8	GUIDE, EXHAUST VALVE	0.8	
		- INCLUDES: Valve clearance adjustment		
3	1111E6	- Replace intake and exhaust all add	0.2	
	1111N3	HEAD, CYLINDER	0.9	
		- INCLUDES: Valve clearance adjustment and release		
5	1111N4	GASKET, CYLINDER HEAD	0.5	
6	1111D5	CYLINDER HEAD COVER AND/OR PACKING	0.1	
8	1111K5	TUBE, BREATHER	0.1	
14	E141C1	PLUG, SPARK	0.1	
		- INCLUDES: Spark plug check		

REF No.	PART NO.	DESCRIPTION	REQD. QTY	SERIAL NO.	PARTS CATALOGUE CODE
1	12204-ZE1-306	GUIDE, IN. VALVE(O.S.)	1		LHB3, QTB, QX, VH
2	12205-ZE1-315	GUIDE, EX. VALVE(O.S.)	1		LHB3, QTB, QX, VH
3	12210-ZM4-405	HEAD COMP., CYLINDER	1		LHB3, QTB, QX, VH
4	12216-ZE5-300	CLIP, VALVE GUIDE	1		LHB3, QTB, QX, VH
5	12251-ZL0-003	GASKET, CYLINDER NEW	1		LHB3, QTB, QX, VH
6	12310-ZDA-000	COVER COMP., HEAD	1		LHB3, QTB, QX, VH
7	12391-ZDA-000	PACKING, HEAD COVER	1		LHB3, QTB, QX, VH
8	15721-ZH8-000	TUBE, BREATHER	1		LHB3, QTB, QX, VH
9	90013-883-000	BOLT, FLANGE, 6 x 12 (CT200)	4		LHB3, QTB, QX, VH
10	90043-ZE1-020	BOLT, STUD, 6 x 112	2		LHB3, QTB, QX, VH
11	90047-ZE1-000	BOLT, STUD, 8 x 32	2		LHB3, QTB, QX, VH
12	94301-10160	DOWEL PIN, 10 x 16	2		LHB3, QTB, QX, VH
13	95701-08060-00	BOLT, FLANGE 8 x 60	4		LHB3, QTB, QX, VH
14	98079-56846	PLUG, SPARK (BPRES) (NGK)	1		LHB3, QTB, QX, VH
	98079-56871	PLUG, SPARK (BP6ES)	1		LHB3, QTB, VH

Address No.

Page No.

1

PART CATALOGUE STRUCTURE

REF No.	PART NO.	DESCRIPTION	REQD. QTY	SERIAL NO.	PARTS CATALOGUE CODE
1	12204-ZE1-306	GUIDE, IN. VALVE(O.S.)	1	-----	LHB3, OTB, QX, VH
2	12205-ZE1-315	GUIDE, EX. VALVE(O.S.)	1	-----	LHB3, OTB, QX, VH
3	12210-ZM4-405	HEAD COMP. CYLINDER	1	-----	LHB3, OTB, QX, VH
4	12216-ZE5-300	CLIP, VALVE GUIDE	1	-----	LHB3, OTB, QX, VH
5	12251-ZL0-003	GASKET, CYLINDER NEW	1	-----	LHB3, OTB, QX, VH
6	12310-ZDA-000	COVER COMP. HEAD	1	-----	LHB3, OTB, QX, VH
7	12391-ZDA-000	PACKING, HEAD COVER	1	-----	LHB3, OTB, QX, VH
8	15721-ZH8-000	TUBE, BREATHER	1	-----	LHB3, OTB, QX, VH
9	90013-883-000	BOLT, FLANGE, 8 x 12 (CT200)	4	-----	LHB3, OTB, QX, VH
10	90043-ZE1-020	BOLT, STUD, 6 x 112	2	-----	LHB3, OTB, QX, VH
11	90047-ZE1-000	BOLT, STUD, 8 x 32	2	-----	LHB3, OTB, QX, VH
12	94301-10160	DOWEL PIN, 10 x 16	2	-----	LHB3, OTB, QX, VH
13	95701-08060-00	BOLT, FLANGE 8 x 60	4	-----	LHB3, OTB, QX, VH
14	98079-56846	PLUG, SPARK (BPR6ES) (NGK)	1	-----	LHB3, OTB, OS, VH
	98079-56871	PLUG, SPARK (BPR6S)	1	-----	LHB3, OTB, VH
		Nh8DARK GREY			

- ① **Address number**
 - Address No. is provided (in place of the page No.) to help you refer to the part with the part No. or part name.
- ② **Block title**
- ③ **Block number**
- ④ **Service item / Flat rate time**
- ⑤ **Reference number**
 - Title number marked with the parenthesis or parentheses indicates that it continues from the previous page.
- ⑥ **Part number**
- ⑦ **Honda color code**
- ⑧ **Description**
- ⑨ **Assemblies**
 - Sections framed with broken lines in the exploded view drawings are available as complete assemblies. (Their individual parts can also be obtained.)
- ⑩ **Color description**
- ⑪ **Note**
 - Notes are shown with the parentheses in the part name column.
- ⑫ **Required quantity**
 - Required QTY shown in the parenthesis or parentheses indicates the optional part.
 - Required QTY. marked with "N" indicates the optional parts that should be selected as needed.
 - Required QTY. indicates the number of the part used in the block.
- ⑬ **Serial number**
- ⑭ **Type**
 - When the type column is blank, it indicates that the part is applicable to all types.
 - As the type of the actual unit may differ from the parts catalogue, type* please refer to "Models, types and applicable serial numbers" for confirmation.
- ⑮
 - Parts enclosed within a dotted line are covered in a different block.
- ⑯
 - A hollow arrow indicates the block No. For the parts enclosed within a dotted line.
- ⑰
 - A solid arrow indicates the block No. The part in question is connected to.

When the parts were revised



Be sure to check the serial number



Ref. No.	Part No.	Description	Reqd. QTY		Serial No.	Parts catalogue code
			EU 30	EU 30s		
1	12204-ZE1-306	GUIDE, IN. VALVE (O.S.)	1	1		
2	12205-ZE1-315	GUIDE, EX. VALVE (O.S.)	1	1		
3	12210-Z0V-D70	HEAD COMP., CYLINDER * NH8	-	1		
4	12216-Z35-300	CLIP VALVE GUIDE	1	1		
5	12251-ZL0-003	GASKET, CYLINDER HEAD	1	1		
6	12310-ZE1-020	COVER COMP. HEAD	1	1		
7	12391-ZE1-000	PACKING, HEAD COVER	1	1		
8	18331-Z0V-D70	PIPE, EX	1	1		
9	18381-Z0T-801	GASKET, MUFFLER	1	1		
10	19630-ZH8-000	CAP. OIL (NO GAUGE)	1	1		
11	19631-Z0V-D70	SHROUD, UPPER	1	1		
12	90002-ZL0-D30	BOLT, STUD, 8X65 (CT200)	2	2		
13	90013-883-000	BOLT, FLANGE, 6X12 (CT200)	8	8		
14	90043-ZE1-020	BOLT, STUD, 6X112 (CT200)	2	2		
15	94050-06080	NUT, FLANGE, 6MM	1	1		
16	94050-08080	NUT, FLANGE, 8MM	2	2		
17	94301-10160	DOWEL PIN, 10X16	2	2		
18	95701-06018-00	BOLT, FLANGE, 6X18	1	1		
19	95701-08060-00	BOLT, FLANGE, 8X60	4	4		
20	98079-55646-M0	PLUG, SPARK (BPR6ES) (NGK)	1	1		

SC, SG

1001801

1001800

The number has been used from the initial model without revision

When shown at the left side, it is applicable to the models of No. 1001801 and the subsequent numbers.

When shown at the right side, it is applicable to the models of No. 1001800.

Abbreviations used in the parts catalogue

The following abbreviations are used in this parts name catalogue.

- | | |
|--|--------------------------------|
| A Ampere | FR. Front |
| A.C. Alternating current | IN. Inlet |
| ASSY. Assembly | L (100L) Link (100Links) |
| AT Automatic transmission | L Left |
| C.D.I. Capacity discharge ignition | MM Millimeter |
| COMP. Complete | MT Manual transmission |
| D.C. Direct current | P.T.O. Power take off |
| EX. Exhaust | R. Right |
| G.F.C.I. Ground Fault Circuit interruptor | RR. Rear |
| HX. Hexagonal | STD. Standard |
| H.S.T. Hydrostatic transmission | T (22T) Tooth (22 Teeth) |
| | V Volt |
| | W Watt |

How to check the part block and serial numbers

Part block

Engine Parts
E-2 ~

Carburetor Parts
E-14



Numbers needed

Stamped engine number

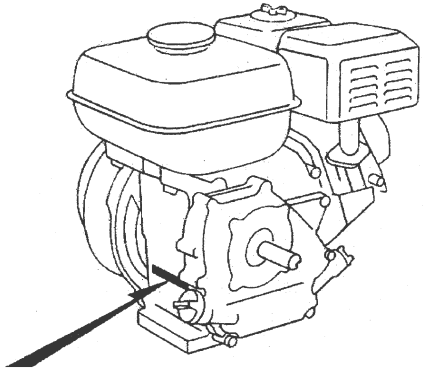
Stamped carburetor identification number

Check point

①

②

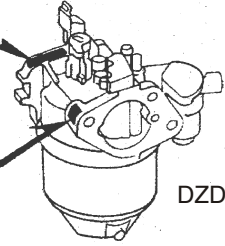
①
TYPE
ENGINE SERIAL NUMBER



DZDB-A

②-B
CARBURETOR
IDENTIFICATION NUMBER

②-A
CARBURETOR
IDENTIFICATION NUMBER



DZDB-B

Models, parts catalogue codes and applicable serial numbers

- Models, Parts catalogue codes and applicable serial Nos. given in this parts catalogue can be identified as follows.

Model	Type	Parts catalogue type	Applicable engine serial No.	Applicable carburetor identification No.
GX200D	QTB	QTB	GCAFD 0000001~	BE59U A
	QX	QX		BE59N A
	SD	SD		BE69B A

* Of carburetor identification numbers, only the portions underlined in the example below are used for registration.

Carburetor BE 59 A CE
Ⓐ Ⓑ

Features of each type

C 2

Specifications		Model	GX200D		
		Type	QTB	QX	SD
Crankshaft	20mm Ø Spline				
	21mm Ø Spline	●	●		
	19mm Ø Straight			●	
	5/8" Thread				
	3/4" Thread				
	19.8mm Ø Tapered				
	M18 Stepped thread				
	M16 Stepped thread				
	20mm Ø Straight				
	24mm Ø Tapered				
Oil alert			●		
Engine stop switch		●	●	●	
Air cleaner	Dual		●		
	Semi dry			●	
	Oil bath	●			
	Standard				
	Boat				
Spark arrester			●		
Netting wire flange				●	
Fuel tank		●	●	●	
Coil	Lamp coil				
	Charge coil				
Starter motor					
Reduction					
Muffler cover					

1

FUEL HOSE, GENERAL PURPOSE HOSES AND VINYL HOSE

1

- The standard part fuel hose, general purpose hose and vinyl hose may be substituted by the coiled bulk part.
- When ordering the standard part fuel hose, general purpose hose and vinyl hose use the bulk part number written in the parts catalog in brackets () underneath the part name.
- When exchanging the hose, cut and use at the specified length as mentioned in the part name.
(For) the method of cutting the bulk part, and method of filling out orders etc., please refer to the instructions issued with the bulk part.)

Bulk part number or fuel hose, general purpose hose and vinyl hose.

Example : 9 5 0 0 1 - 7 5 0 0 1 - 5 0 M

Bulk Part Number : Refers to the bulk part.

Marking Code (hose type) : (fuel hose and general purpose hose)

Change code (for added hose) : (Vinyl hose)

Indicates number mark or change sequence, however, the code for the bulk part must be strictly 0 (zero).

Types of Code :

- | | | | | | |
|-------------|---|----------------|--------------|--------------|----------------|
| • Fuel Hose | 2 : Red outside braid
(3mm inside dia. only) | • General Hose | 1 : Ash gray | • Vinyl Hose | 1 : Clear |
| | 5 : Black inside braid | | 2 : Ash gray | | 2 : Black |
| | 3 : Red (3 mm inside dia. only) | | 3 : Black | | 3 : Light red |
| | 4 : Ash gray with red stripe
(3 mm inside dia. only) | | 5 : Black | | 6 : Light red |
| | 6 : Black | | | | 7 : Pale black |

Lengths : 001 : 1 m (standard)
003 : 3 m } Application or specification of some parts is not settled.
008 : 8 m }

I.D. code : (fuel hose and general purpose hose) ID./OD. code : vinyl hose)

30 : 3.0 mm	11 : 11 mm	01 : ID 2.9, OD. 6.8 mm	14 : ID. 6.0 OD. 9.0 mm	37 : ID. 11.0, OD. 15.0 mm
35 : 3.5 mm	91 : 12 (outside dia. 15) mm	03 : ID 3.0, OD 6.0 mm	17 : ID, 7.0, OD. 9.0 mm	38 : ID. 12.0, OD 13.0 mm
45 : 4.5 mm	92 : 12 (outside dia. 16) mm	05 : ID. 3.5, OD. 6.5 mm	19 : ID. 7.0, OD. 11.0 mm	39 : ID. 12.0, OD. 14. mm
50 : 5.0 mm	12 : 12 (outside dia. 17) mm	07 : ID. 4.0, OD. 7.0 mm	21 : ID. 8.0 OD. 9.0 mm	40 : ID. 12.0, OD. 16.0mm
55 : 5.3 mm.	14 : 14 mm	08 : ID, 4.5, OD. 6.5 mm	23 : ID. 8.0, OD. 12.00 mm	43 : ID. 13.0, OD.15.0mm
5.5 mm	17 : 17 mm			
65 : 6.5 mm		09 : ID. 4.5, OD. 8.0 mm	25 : ID. 9.0, OD. 11.0 mm	45 : ID. 14.0, OD. 18.0mm
70 : 7.0 mm		12 : ID. 5.0, OD. 7.0 mm	27 : ID, 9.0, OD. 13.0 mm	50 : ID. 16.0, OD.19.0mm
75 : 7.3 mm.		10 : ID. 5.0, OD. 8.0 mm	33 : ID. 10.0, OD. 14.0 mm	55 : ID. 17.5, OD.20.5 mm
7.5 mm				
80 : 8.0 mm		11 : ID. 5.0, OD. 9.0 mm	36 : ID. 11.0 OD. 13.00 mm	60 : ID. 22.0, OD.27.0 mm

Hose Type : 1 : Fuel Hose
5 : General Hose
3 : Vinyl hose

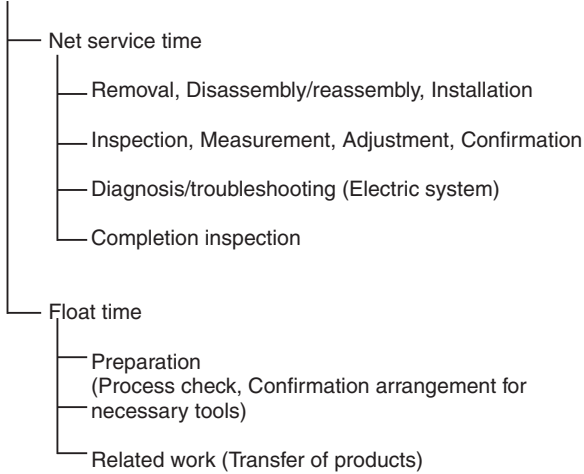
CAUTION : It is DANGEROUS to confuse the fuel hose with the general purpose hose or vinyl hose.

Never use a general purpose hose or vinyl hose in place of a fuel or vice versa. Always use the correct bulk part in the parts list, according to the service manual or the instructions issued with the bulk part.

FLAT RATE SERVICE TIME

Flat rate service time (FRT) means the standard time required to service a product, which is listed in this manual to help the dealers control the actual working process and calculate the service charge by using it as a guide.

FRT setting system



* Float time is set by multiplying the net service time by a given coefficient.

Editorial style

The service items shown in text are listed with the exchange work time for the repair sales parts as the subject. Other representative service items not using repair parts (removal/installation, adjustment, inspection/measuring, and other work) are listed collectively in the list in the preface, classified according to the work.

FRT setting standard

- Decimal system (in unit of 0.1) is adopted to set FRT as it is convenient to calculate the wage.
Example : (0.1)→6minutes, (0.2)→12 minutes
[Labour cost per hour] x [FRT] = [Wage]
- FRT is set with a hand tool.
- Service items and FRT can be subject to change depending on developments of tools and service equipment and improvement in service procedure.

Work procedure

- As the work procedure is set with the work time according to the method in the separate Service Manual, refer to this Manual as required.
- Work methods permitting servicing in the shortest time still permitting assurance of safe work and product warranty are used for setting of service items not listed in the Service Manual.
- Work basically is to be performed by one person, and when two or more people are required, setting is done as the total time for the number of people.
- The set value for the technological level of the workers uses a person with three years of experience in the repair of Honda products as the standard.
- Special tools and service equipment used to set FRT are those specified or recommended in Service Manual.

Service item whose FRT is not presented

- Accessories and service parts that are not listed to use in this manual.
- Location with little aging deterioration or breakage during normal use.
- Service work that can be finished by one touch.
- Service work that is seldom done (i.e. Extremely small causes of trouble and service frequency).
- Products and parts whose location for installation differs according to its status of use and application.
- When FRT is not presented, please calculate wages based on appropriate actual work time.

Operation not included of FRT

- Oil and coolant water draining, waiting time for warming up operation and etc.
- Additional operation that involves removal/installation of standard exterior equipment.
- Indirect time spent for service by visiting the customer, trade-in, and delivery.
- Indirect time required for ordering and delivery of parts.
- Cost for grease, adhesive agent, etc. Used for service work.

Explanation of FRT by using an example
(The example may differ from the actual presented items)

Ref. No.	L.O.N.	(Relative Ref. Number)	F.R.T.
①	1111L1	Description (1, 2, 3, 4)	②
②		VALVE INTAKE 4.1 ④	
③	1111L1A	• NOTE : OHV type ⑥	
		• Includes : Engine removal and installation ⑦	
		• One head (intake all) add1.4 ⑤	

① Reference no. Of the illustration of part that shows location of the replacement work.

② FRT is an abbreviation of Flat Rate Time indicating the standard service time required for the replacement.

③ LON is an abbreviation of Labor Operation Number, and it is classified of the service items by the work unit code.

The same operation code is used regardless of the models.

Standard operation is indicated with 6 digits code, and additional operation is indicated with 7 digits code.

④ Indicating the intake valve replacement and FRT 4.1 .

⑤ Indicating Frt 1.4 that will be added when additional operation (whole intake side of one cylinder head) is done in association with intake valve replacement.

⑥ Indicating work condition or application condition of the service item.

⑦ Indicating work contents that are included in the service item.

⑧ Indicating a reference No. Whose operation and time are the same as FRT 4.1 for the intake valve.

(The application range is limited to the service items without an LON setting within a same block.)

How to refer to the service item by using the sample

(Intake valve replacement)

Open to the page of the block where the intake valve's spare part illustration is shown.



Look for the intake valve illustration, and refer to the service item and FRT that agree with the reference No.

Indication mark for the listing of service items that continues to the following page.

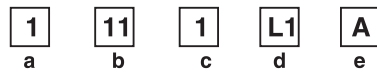
Ref. No.	L.O.N.	(Relative Ref. Number) Description	F.R.T.
	1111L1	VALVE INTAKE 4.1	
	.	.	.
	.	.	.

+
Mark indicated at the last line.

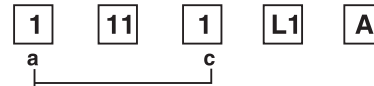
Indication of the block with no setting of FRT

Ref. No.	L.O.N.	(Relative Ref. Number) Description	F.R.T.
		NO INFORMATION	

LON code system



- a) category code Engine
- b) Location/function code Engine upper
- c) Operation code Replace
- d) Operation sequence number ... (Unit code can be show with alphabet)
.....Intake valve
(No regular rule of code)
- e) Additional code One head (intake all)
(No regular rule of code)



a) Category codes and classification

Code	Category
1	Engine
2	Power drive
3	Fuel & Exhaust
4	Frame & Body
5	Steering
6	Electrical
7	Axle & Brake
8	Control system
9	-
0	Attachments

c) Operation codes and classification

Code	Operation Category
1	Replace, Removal/Installation, Change
2	Overhaul
3	Adjust, Rotation
4	(Paint -related work : Top-coat)
5	Test, Inspect/diagnose, Measurement
6	(Overhaul-related work : Rebore)
7	(Overhaul-related work : Reseal)
8	(Resurface)
9	(Paint -related work : Refinish)
0	Repair, Cleaning, Air bleeding

Major service items without using spare parts

- (1) Removal/Installation, (2) Adjustment, (3) Inspection/Measurement
 (4) Overhaul, (5) Other work

E : Engine, T : Transmission, D : Drive system, B : Body and related

(1) Removal/Installation

Set with the parts configuration in the status of being removed from the product.

	LON	DESCRIPTION	F.R.T.
E	1111L3	CYLINDER HEAD ASSY., REMOVAL/INSTALLATION	0.5

(2) Adjustment

	LON	DESCRIPTION	F.R.T.
E	11131A1	VALVE CLEARANCE ADJ. NOTE: FOR 1 PRODUCT	0.3
	1163A0	CONTROL, THROTTLE/GOVERNOR- ADJUSTMENT	0.2
	3113A2	CARBURETOR IDLE- ADJUSTMENT	0.2

(3) Inspection, Measurement, Cleaning

	LON	DESCRIPTION	F.R.T.
E	1105A0	ENGINE OIL-INSPECTION	0.1
	3120A0	AIR CLEANER-CLEANING INCLUDES : Air cleaner-inspection	0.2
	3130A0	SPARK ARRESTER-CLEANING INCLUDES: Spark arrester - inspection	0.2
	6140A0	SPARK PLUG-ADJUSTMENT/CLEANING Note : For 1 product	0.1

(4) Overhaul

Work condition : The required Measurements, inspections, adjustment, and cleaning/washing of each part are performed, including the main body removal/installation work and the replacement of defective parts.

	LON	DESCRIPTION	F.R.T.
E	3112A0	CARBURETOR-OVERHAUL INCLUDES: All necessary adjustment	0.9

(5) Other work

	LON	DESCRIPTION	F.R.T.
E	1101E1	ENGINE OIL-CHANGE INCLUDES : Engine oil-inspection	0.2

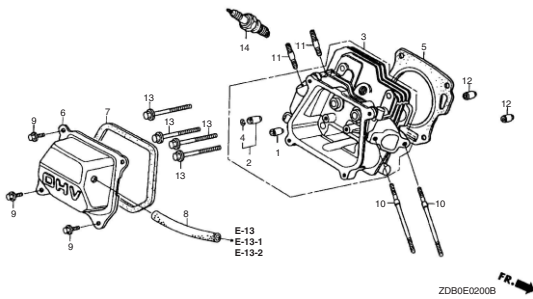
ENGINE GROUP

C 9

.Ref.No.on the index Illustration may be different from that in the text.

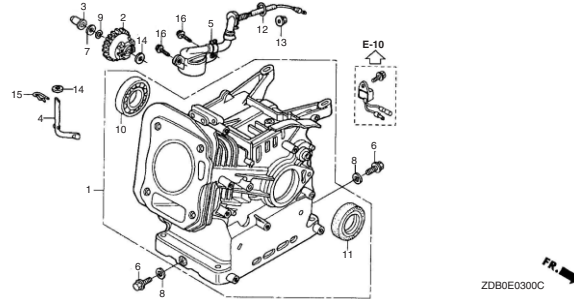
E-2 CYLINDERHEAD

D 1



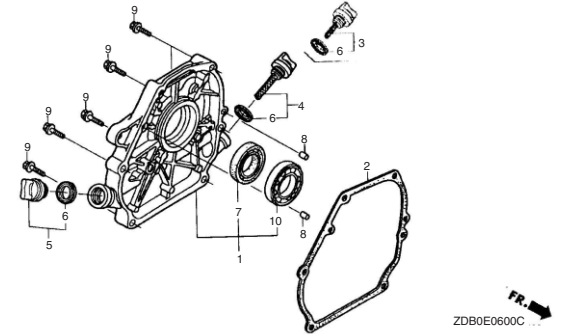
E-3 CYLINDER BARREL

D 2



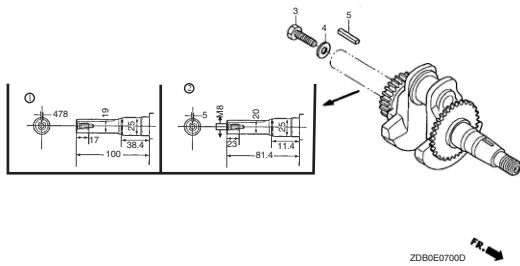
E-4 CRANKCASE COVER

D 3



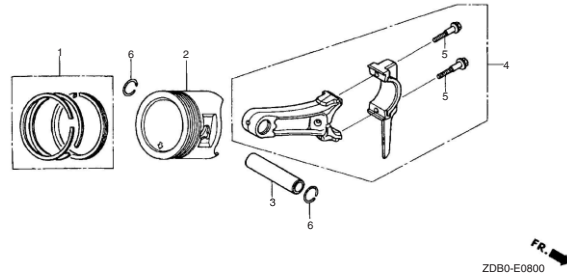
E-5 CRANKSHAFT

D 4



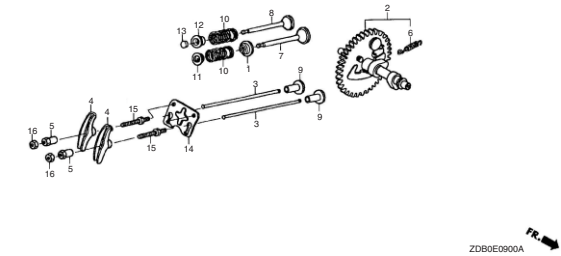
E-6 PISTON

D 5



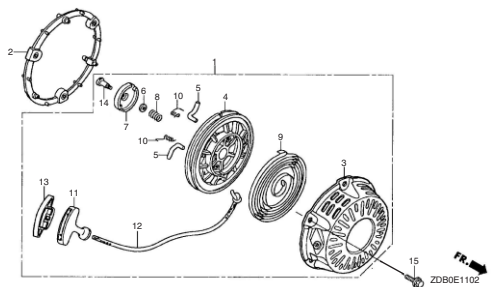
E-7, 8 CAMSHAFT

E 1,2



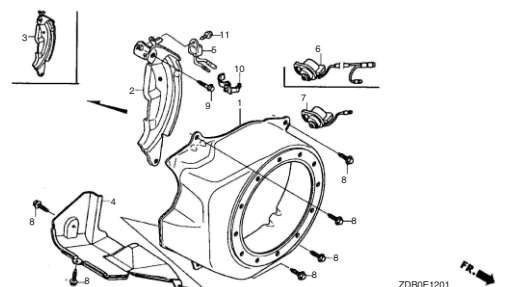
E-9 RECOIL STARTER

E 3



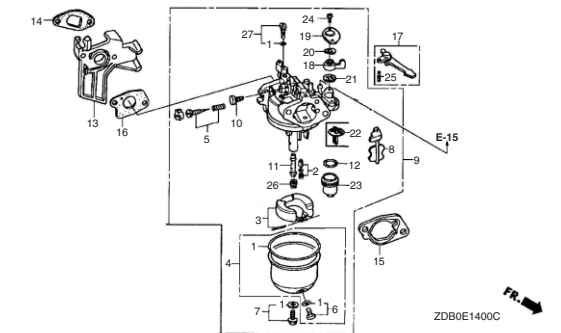
E-10 FAN COVER

E 4



E-11, 12 CARBURETOR

F 1,2

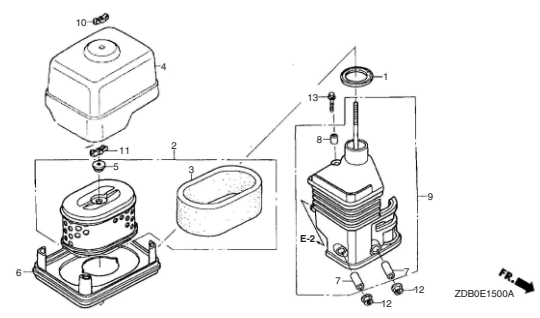


ENGINE GROUP

C 10

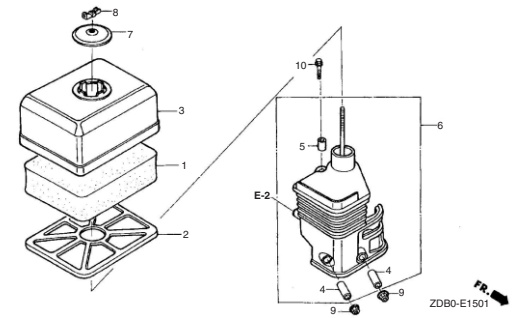
.Ref.No.on the index Illustration may be different from that in the text.

E-13 AIR CLEANER (SILENT) **F 3**



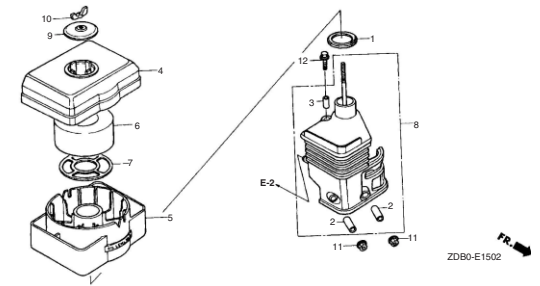
ZDB0E1500A **FR.**

E-13-1 AIR CLEANER (SEMI DRY) **F 4**



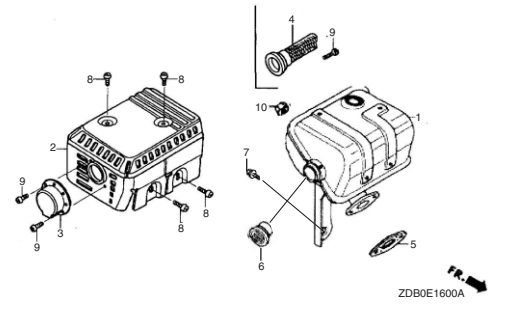
ZDB0-E1501 **FR.**

E-13-2 AIR CLEANER (OIL BATH) **F 5**



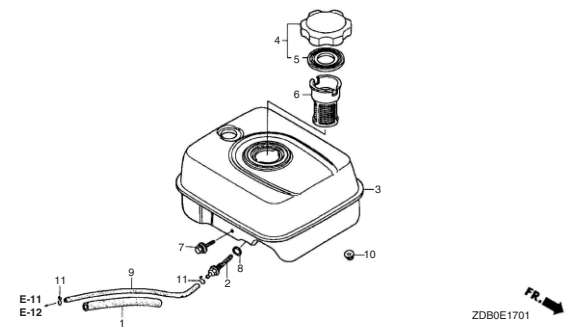
ZDB0-E1502 **FR.**

E-14 MUFFLER **G 1**



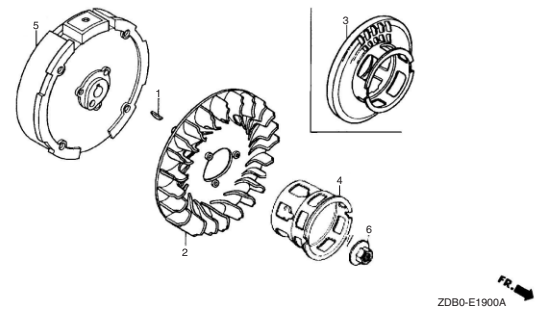
ZDB0E1600A **FR.**

E-15 FUEL TANK **G 2**



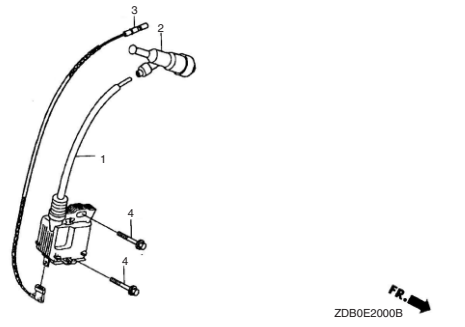
ZDB0E1701 **FR.**

E-16 FLYWHEEL **G 3**



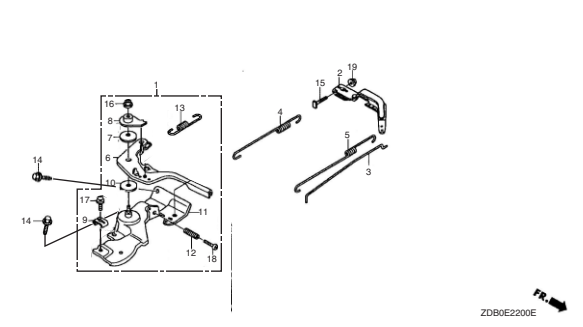
ZDB0-E1900A **FR.**

E-17 IGNITION COIL **G 4**



ZDB0E2000B **FR.**

E-18 CONTROL **G 5**



ZDB0E2200E **FR.**

2

FRAME GROUP

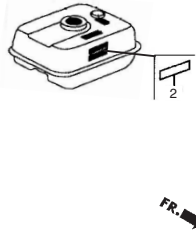
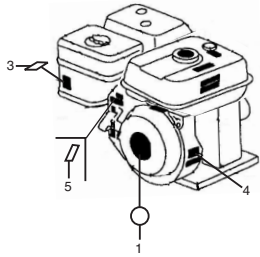
C 11

.Ref.No.on the index Illustration may be different from that in the text.

E-19

LABEL

H 1



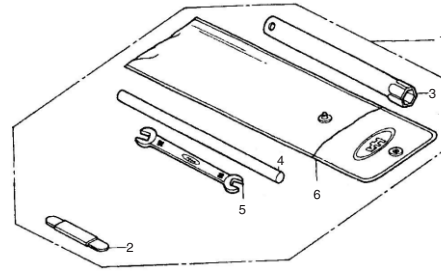
ZD4GE019

FR.

E-20

TOOL

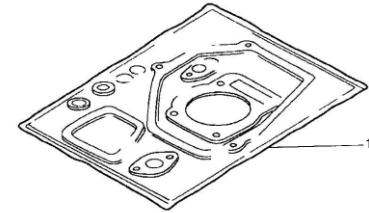
I 1

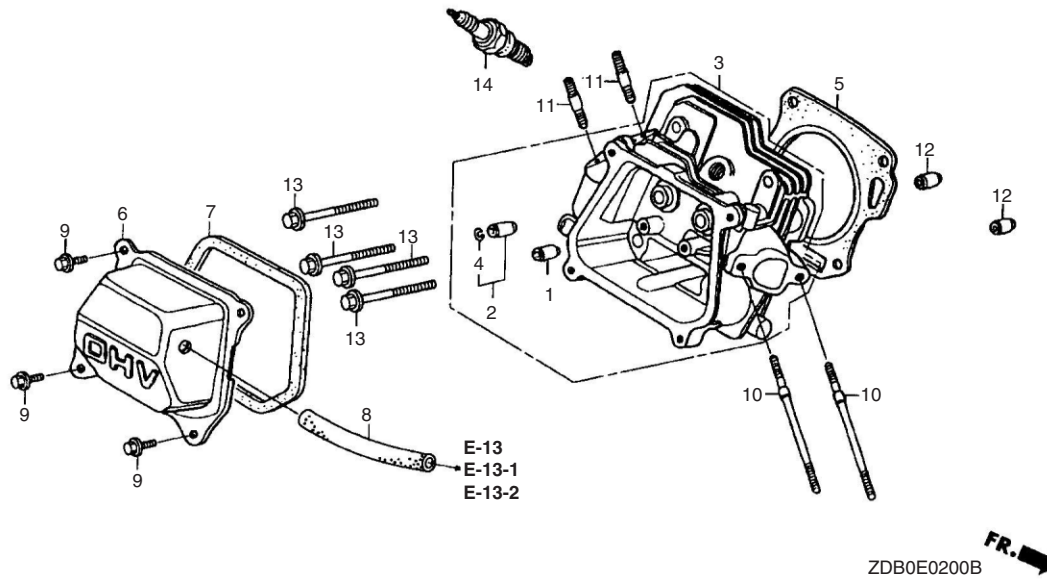


EOP-1

GASKET KIT

I 2

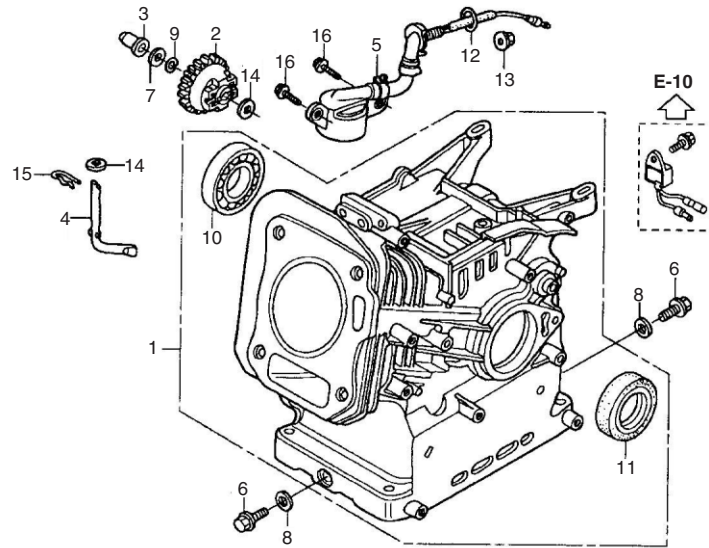




Ref. No.	L.O.N.	(Relative ref. Number) Description	F.R.T.
1	1111E9	GUIDE, INTAKE VALVE - INCLUDES: Valve clearance adjustment	0.8
	1111E9E	- Replace intake and exhaust all add	0.2
2	1111E8	GUIDE, EXHAUST VALVE - INCLUDES: Valve clearance adjustment	0.8
	1111E8E	- Replace intake and exhaust all add	0.2
3	1111N3	HEAD, CYLINDER - INCLUDES: valve clearance adjustment and reface	0.9
5	1111N4	GASKET, CYLINDER HEAD	0.5
6	1111D5	COVER, CYLINDER HEAD AND/OR PACKING, HEAD COVER	0.1
8	1111K5	TUBE, BREATHER	0.1
15	6141C1	PLUG, SPARK - INCLUDES: Spark plug check	0.1

REF No.	PART NO.	DESCRIPTION	REQD. QTY	SERIAL NO.	PARTS CATALOGUE CODE
			GX200D		
1	12204-ZE1-306	GUIDE, IN. VALVE (O.S)	1	-----	. QTB, QX, SD
2	12205-ZE1-315	GUIDE, EX. VALVE (O.S)	1	-----	QTB, QX, SD
3	12210-ZL0-020	HEAD COMP., CYLINDER	1	-----	QTB, QX, SD
4	12216-ZE5-300	CLIP, VALVE GUIDE	1	-----	QTB, QX, SD
5	12251-ZL0-003	GASKET, CYLINDER HEAD	1	-----	QTB, QX, SD
6	12310-ZDA-000	COVER COMP., HEAD	1	-----	QTB, QX, SD
7	12391-ZE1-000	PACKING, HEAD COVER	1	-----	QTB, QX, SD
8	15721-ZH8-000	TUBE, BREATHER	1	-----	QTB, QX, SD
9	90013-883-000	BOLT, FLANGE, 6x12 (CT200)	4	-----	QTB, QX, SD
10	90043-ZE1-020	BOLT, STUD, 6x112	2	-----	QTB, QX, SD
11	90047-ZE1-000	BOLT, STUD, 8x32	2	-----	QTB, QX, SD
12	94301-10160	DOWEL PIN, 10x16	2	-----	QTB, QX, SD
13	95701-08060-00	BOLT, FLANGE, 8x60	4	-----	QTB, QX, SD
14	98079-56871	PLUG, SPARK (BP6ES)	1	-----	QTB, QX, SD

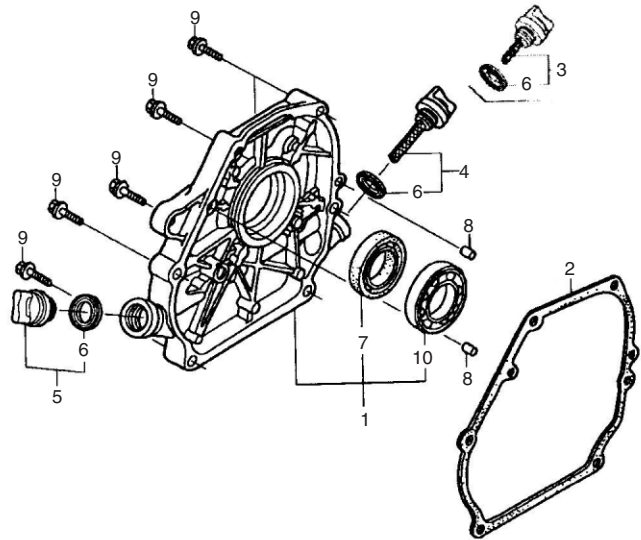
2



Ref. No.	L.O.N.	(Relative ref. Number) Description	F.R.T.
1	1101A0	BARREL, CYLINDER	2.0
2		(12, 17)	
	6151E8	SWITCH, OIL LEVEL	0.5
3	1161C4	GOVERNOR ASSEMBLY	1.0
4		(7, 9)	
	1161B6	SLIDER, GOVERNOR	0.4
5	1161B4	SHAFT, GOVERNOR ARM	0.9
10	1101A4	BEARING, CRANKSHAFT : FRONT	1.9
11	1101E4	OIL SEAL, CRANKSHAFT : FRONT	1.8

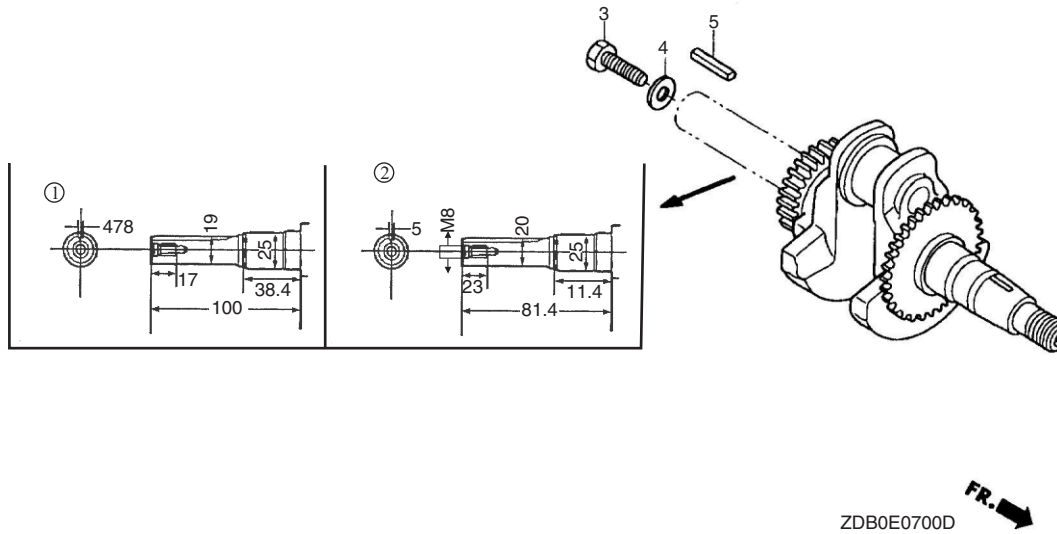
2

REF No.	PART NO.	DESCRIPTION	REQD. QTY	SERIAL NO.	PARTS CATALOGUE CODE
			GX200D		
1	12000-Z4V-901	BARREL ASSY., CYLINDER	1	-----	QTB, SD
	12000-Z4V-911	BARREL ASSY., CYLINDER	1	-----	QX
2	16506-ZDB-000	GOVERNOR ASSY.,	1	-----	QTB, QX, SD
3	16531-ZE1-000	SLIDER, GOVERNOR	1	-----	QTB, QX, SD
4	16541-ZE1-000	SHAFT, GOVERNOR ARM	1	-----	QTB, QX, SD
5	35480-Z0T-003	SWITCH ASSY., OIL LEVEL	1	-----	QX
6	90001-ZE1-000	BOLT, DRAIN PLUG	2	-----	QTB, QX, SD
7	90451-ZE1-000	WASHER, THRUST, 6MM	1	-----	QTB, QX, SD
8	90601-ZE1-000	WASHER, DRAIN PLUG, 10.2MM	2	-----	QTB, QX, SD
9	90602-ZE1-000	CLIP, GOVERNOR HOLDER	1	-----	QTB, QX, SD
10	91001-Z4X-003	BEARING, RADIAL BALL 6205 NSK.....	1	-----	QTB, QX, SD
11	91202-YA0-P01	OIL SEAL, 25x41x6	1	-----	QTB, QX, SD
12	91301-ZDA-000	O-RING, 14MM	1	-----	QX
13	94050-10000	NUT, FLANGE, 10MM	1	-----	QX
14	94101-06800	WASHER, PLAIN, 6MM	2	-----	QTB, QX, SD
15	94251-08000	PIN, LOCK, 8MM	1	-----	QTB, QX, SD
16	95701-06012-00	BOLT, FLANGE, 6x12	2	-----	QX



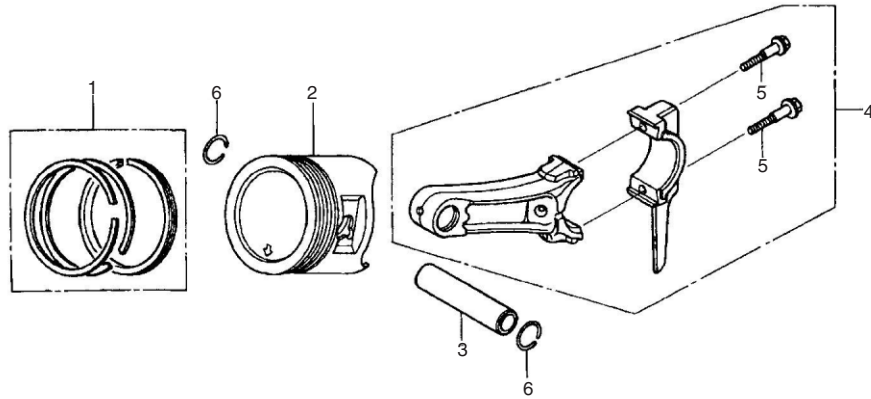
Ref. No.	L.O.N.	(Relative ref. Number) Description	F.R.T.
1		(11)	
1	1101G0	COVER, CRANKCASE (A)	0.3
2	1101F1	COVER, CRANKCASE	0.2
3	1101E9	PACKING, CRANKCASE COVER	0.3
7	1101E5	OIL SEAL, CRANKSHAFT : REAR	0.3
10	1101A6	BEARING, CRANKSHAFT : REAR	0.4
12	2141A7	BEARING, POWER TAKE OFF SHAFT : FRONT	0.4
13	2141BD	BEARING, REDUCTION COUNTER GEAR : FRONT	0.4

REF No.	PART NO.	DESCRIPTION	REQD. QTY	SERIAL NO.	PARTS CATALOGUE CODE
			GX200D		
1	11300-Z4M-630	COVER ASSY., CRANKCASE	1	-----	SD
	11300-Z4M-640	COVER ASSY., CRANKCASE	1	-----	QTB, QX
2	11381-ZH8-801	PACKING, CASE COVER (NON ASBESTOS)	1	-----	QTB, QX, SD
3	15600-Z0T-800	CAP ASSY., OIL FILLER, (3.7MM)	1	-----	QTB
4	15600-Z0T-810	CAP ASSY., OIL FILLER, (4.9MM)	1	-----	QX, SD
5	15600-Z0T-820	CAP ASSY., OIL FILLER,	1	-----	QTB, QX, SD
6	15625-Z0T-800	PACKING, OIL FILLER CAP	2	-----	QTB, QX, SD
	15625-ZE1-003	PACKING, OIL FILLER CAP	(2)	-----	QTB, QX, SD
7	91202-YA0-P01	OIL SEAL, 25x41x6	1	-----	QTB, QX, SD
8	94301-08140	DOWEL PIN, 8x14	2	-----	QTB, QX, SD
9	95701-08032-00	BOLT, FLANGE, 8x32	6	-----	QTB, QX, SD
10	96100-62050-00	BEARING, RADIAL BALL, 6205 NSK	1	-----	QTB, QX, SD



Ref. No.	L.O.N.	(Relative ref. Number) Description	F.R.T.
1	1101F0	(2, 3, 4, 5, 6, 10, 11, 12, 13, 14) CRANKSHAFT	1.1

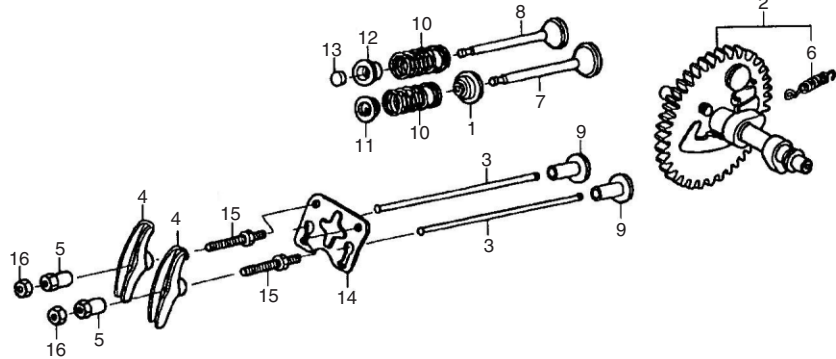
REF No.	PART NO.	DESCRIPTION	REQD. QTY	SERIAL NO.	PARTS CATALOGUE CODE
			GX200D		
1	13310-ZL0-602	CRANKSHAFT COMP,	1	-----	. QTB, QX
2	13310-ZL0-020	CRANKSHAFT COMP,	1	-----	SD
3	90003-ZE1-000	BOLT, HEX., 5/16"	1	-----	QTB
4	90473-842-000	WASHER, 8MM	1	-----	QTB
5	90741-883-810\	KEY, 5x5x33 (YELLOW)	1	-----	SD
	90745-ZE1-600	KEY, 4.78x4.78x38	1	-----	QTB, QX



ZDB0-E0800

Ref. No.	L.O.N.	(Relative ref. Number) Description	F.R.T.
2	1111R1	(1, 3, 4) PISTON AND/OR RING SET AND/OR BEARING AND/OR ROD - INCLUDES: inspection/ Measurement/cleaning	1.1

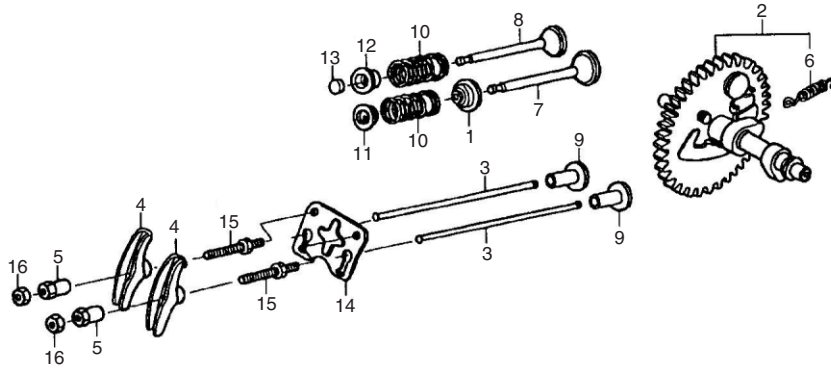
REF No.	PART NO.	DESCRIPTION	REQD. QTY	SERIAL NO.	PARTS CATALOGUE CODE
			GX200D		
1	13010-Z4K-004	RING SET, PISTON (STD.)	1	-----	QTB, QX, SD
	13010-Z4M-003	RING SET, PISTON (STD.)	1	-----	QTB, QX, SD
	13011-Z4K-004	RING SET, PISTON (0.25)	(1)	-----	QTB, QX, SD
	13011-Z4M-003	RING SET, PISTON (0.25)	(1)	-----	QTB, QX, SD
	13012-Z4K-004	RING SET, PISTON (0.50)	(1)	-----	QTB, QX, SD
	13012-Z4M-003	RING SET, PISTON (0.50)	(1)	-----	QTB, QX, SD
	13013-Z4K-004	RING SET, PISTON (0.75)	(1)	-----	QTB, QX, SD
2	13101-Z4V-800	PISTON (STD.)	1	-----	QTB, QX, SD
	13102-ZL0-020	PISTON (0.25)	(1)	-----	QTB, QX, SD
	13103-ZL0-020	PISTON (0.50)	(1)	-----	QTB, QX, SD
	13104-ZL0-020	PISTON (0.75)	(1)	-----	QTB, QX, SD
3	13111-Z4M-000	PIN, PISTON	1	-----	QTB, QX, SD
4	13200-Z0T-800	ROD ASSY., CONNECTING	1	-----	QTB, QX, SD
5	90001-ZE1-000	BOLT, CONNECTING ROD	2	-----	QTB, QX, SD
6	90551-ZE1-000	CLIP, PISTON PIN, 18MM	2	-----	QTB, QX, SD



ZDB0E0900A

Ref. No.	L.O.N.	(Relative ref. Number) Description	F.R.T.
1	1111K2	SEAL, INTAKE VALVE STEM - INCLUDES: Valve clearance adjustment	0.6
2	1111C2	CAMSHAFT - INCLUDES: Valve clearance adjustment	0.4
3	1111L6	ROD, PUSH : INTAKE - INCLUDES: Valve clearance adjustment	0.2
	1111L6A	- Replace exhaust push rod add	0.1
	1111L7	ROD, PUSH : EXHAUST - INCLUDES: Valve clearance adjustment	0.2
	1111L7A	- Replace intake push rod add	0.1
4	1111A2	ARM, ROCKER : INTAKE - INCLUDES: Valve clearance adjustment	0.2
	1111A2A	- Replace exhaust rocker arm add	0.1
	1111A1	ARM, ROCKER : EXHAUST - INCLUDES: Valve clearance adjustment	0.2
	1111A1A	- Replace intake rocker arm add	0.1
7	1111L1	VALVE, INTAKE - INCLUDES: Valve clearance adjustment and reface	0.2
	1111L1E	Replace intake and exhaust all add	0.2

REF No.	PART NO.	DESCRIPTION	REQD. QTY	SERIAL NO.	PARTS CATALOGUE CODE
			GX200D		
1	12209-Z4M-801	SEAL, VALVE STEM	1	-----	QTB, QX, SD
2	14100-ZL0-000	CAMSHAFT ASSY.,	1	-----	QTB, QX, SD
3	14410-ZE1-010	ROD, PUSH	2	-----	QTB, QX, SD
4	14431-ZE1-000	ARM, VALVE ROCKER	2	-----	QTB, QX, SD
5	14451-ZDA-000	PIVOT, ROCKER ARM	2	-----	QTB, QX, SD
6	14568-ZE1-000	SPRING, WEIGHT RETURN	1	-----	QTB, QX, SD
7	14711-ZF1-000	VALVE, IN	1	-----	QTB, QX, SD
8	14721-ZF1-000	VALVE, EX	1	-----	QTB, QX, SD
9	14731-ZL0-000	LIFTER, VALVE	2	-----	QTB, QX, SD
10	14751-ZF1-000	SPRING, VALVE	2	-----	QTB, QX, SD



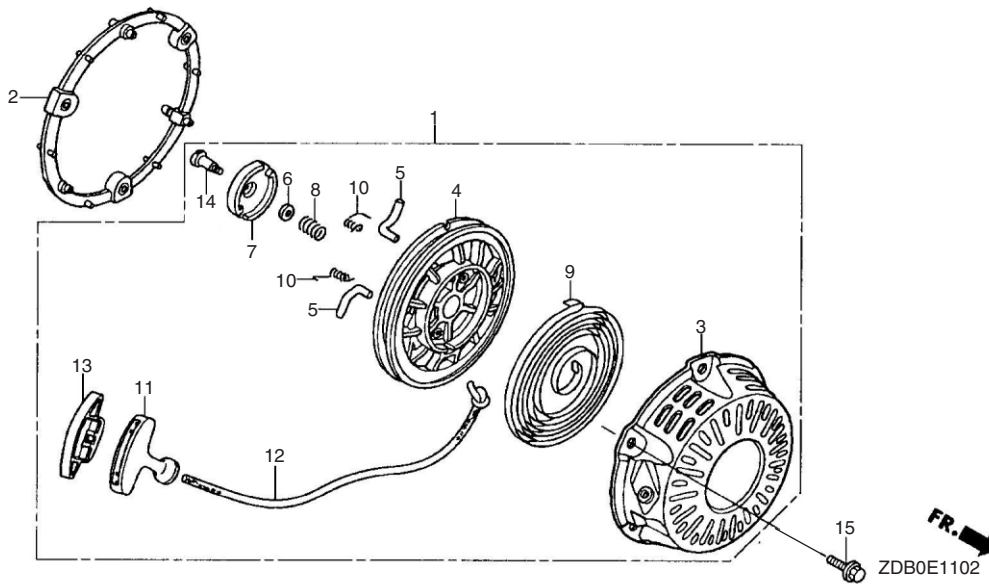
ZDB0E0900A



Ref. No.	L.O.N.	(Relative ref. Number) Description	F.R.T.
8	1111L0	VALVE, EXHAUST - INCLUDES: Valve clearance adjustment and reface	0.7
	1111L0E	- Replace intake and exhaust all add	0.2
9	1111L9	LIFTER, VALVE : INTAKE - INCLUDES: Valve clearance adjustment - NOTE : same time for two units	0.4
	1111M0	LIFTER, VALVE : EXHAUST - INCLUDES: Valve clearance adjustment - NOTE : Same time for two units	0.4
10	1111P3	SPRING, VALVE : INTAKE - INCLUDES: Valve clearance adjustment	0.6
	1111P3A	- Replace intake and exhaust all add	0.1
	1111P4	SPRING, VALVE : EXHAUST - INCLUDES: Valve clearance adjustment	0.6
	1111P4A	- Replace intake and exhaust all add	0.1
13	1111J7	ROTATOR, VALVE - INCLUDES: Valve clearance adjustment	0.2
17	1111Y3	CAMSHAFT / SHAFT, POWER TAKE OFF .. - INCLUDES: Valve clearance adjustment	1.1
18	2141W5	CHAIN, POWER TAKE OFF DRIVE (N-TYPE).. - INCLUDES: Valve clearance adjustment	1.1



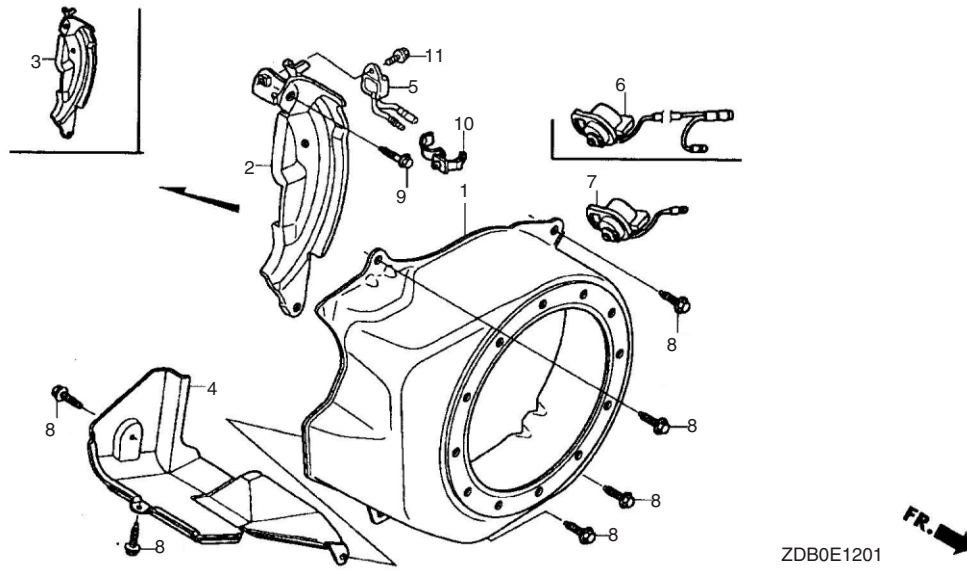
REF No.	PART NO.	DESCRIPTION	REQD. QTY	SERIAL NO.	PARTS CATALOGUE CODE
			GX200D		
11	14771-ZE1-000	RETAINER, IN. VALVE SPRING	1	-----	QTB, QX, SD
12	14773-Z4X-000	RETAINER, EX. VALVE SPRING	1	-----	QTB, QX, SD
13	14781-ZE1-000	ROTATOR, VALVE	1	-----	QTB, QX, SD
14	14791-ZE1-010	GUIDE, PUSH ROD	1	-----	QTB, QX, SD
15	90012-ZE0-010	BOLT, PIVOT, 8MM	2	-----	QTB, QX, SD
16	90206-ZE1-000	NUT, PIVOT ADJUSTING	2	-----	QTB, QX, SD



Ref. No.	L.O.N.	(Relative ref. Number) Description	F.R.T.
1	1121B9	STARTER, RECOIL	0.1
2	1121B5	SPACER, RECOIL STARTER MOUNTING	0.1
4	1121B1	REEL, RECOIL STARTER	0.3
5	1121B0	RATCHET, STARTER AND/OR SPRING, RATCHET	0.2
- NOTE : same time for two units (8)			
7	1121A4	GUIDE, RATCHET	0.2
9	1121B7	SPRING, RECOIL STARTER RETURN .	0.3
12	1121B3	ROPE, RECOIL STARTER	0.3

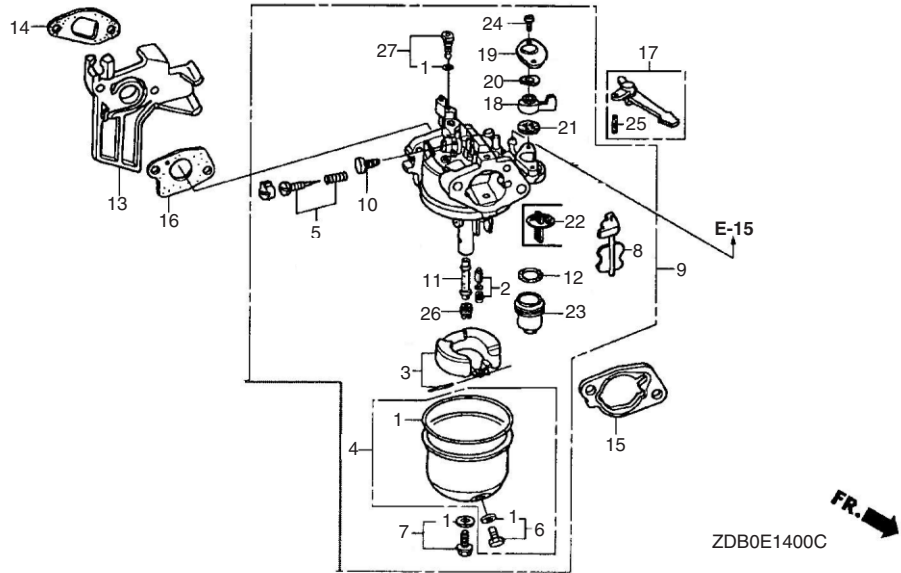
2

REF No.	PART NO.	DESCRIPTION	REQD. QTY	SERIAL NO.	PARTS CATALOGUE CODE
			GX200D		
1	28400-Z4M-003	STARTER ASSY., RECOIL	1	-----	QTB, QX, SD
2	28405-ZDB-000	SPACER, RECOIL MOUNTING	1	-----	QTB, QX, SD
3	28410-Z4M-003	CASE COMP., RECOIL STARTER	1	-----	QTB, QX, SD
4	28421-Z0T-003	REEL, RECOIL STARTER	1	-----	QTB, QX, SD
5	28422-ZH8-801	RATCHET, STARTER	2	-----	QTB, QX, SD
6	28431-ZH8-801	PLATE, FRICTION	1	-----	QTB, QX, SD
7	28433-ZH8-801	GUIDE, RATCHET	1	-----	QTB, QX, SD
8	28441-ZH8-801	SPRING, FRICTION	1	-----	QTB, QX, SD
9	28442-ZH8-003	SPRING, RECOIL STARTER	1	-----	QTB, QX, SD
10	28443-ZH8-801	SPRING, RETURN	2	-----	QTB, QX, SD
11	28461-Z4M-003	KNOB, RECOIL STARTER	1	-----	QTB, QX, SD
12	28462-ZH8-003	ROPE, RECOIL STARTER	1	-----	QTB, QX, SD
13	28463-Z4M-003	KNOB, REINFORCEMENT	1	-----	QTB, QX, SD
14	90003-ZH8-801	SCREW, SETTING	1	-----	QTB, QX, SD
15	95701-06018-00	BOLT, FLANGE, 6x18	3	-----	QTB, QX, SD



Ref. No.	L.O.N.	(Relative ref. Number) Description	F.R.T.
2		(3)	
2	1141G8	COVER, ENGINE COOLING FAN	0.2
4		(5, 6)	
4	1121A7	PLATE, SIDE	0.2
8	4141E2	SHROUD, ENGINE : UPPER	0.2
9		(10)	
9	4141E0	SHROUD, ENGINE : LOWER	0.1
11	6151A0	ALERT UNIT, ENGINE OIL	0.1
12		(13)	
12	6151D9	SWITCH, ENGINE STOP	0.2

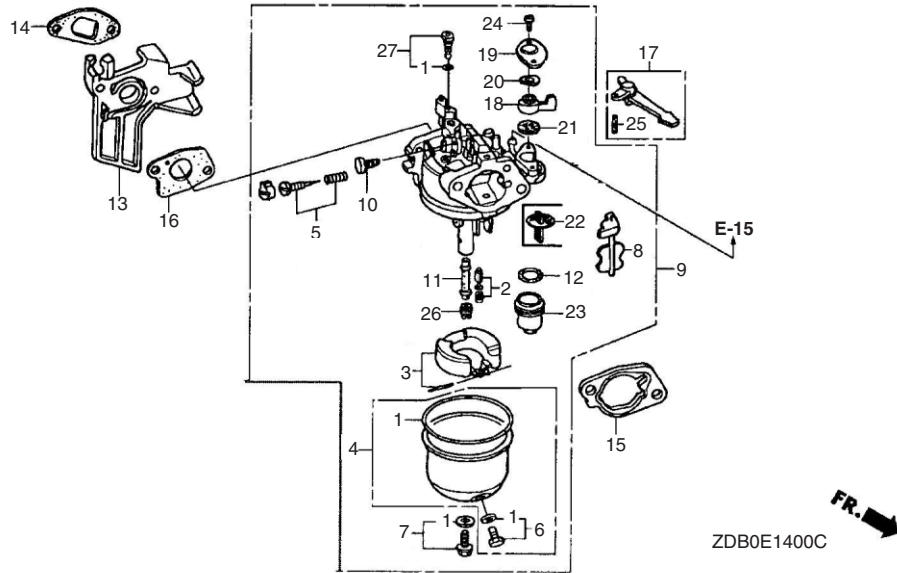
REF No.	PART NO.	DESCRIPTION	REQD. QTY	SERIAL NO.	PARTS CATALOGUE CODE
			GX200D		
1	19610-Z4M-000	COVER COMP., FAN	1	-----	QTB, QX, SD
2	19611-Z4M-810	PLATE COMP., SIDE (OIL ALERT)	1	-----	QX
3	19612-Z4M-000	PLATE, SIDE (STD.)	1	-----	QTB, SD
4	19630-ZH8-000	SHROUD COMP.,	1	-----	QTB, QX, SD
5	34150-ZH7-023	ALERT UNIT, OIL	1	-----	QX
6	35120-ZDA-003	SWITCH ASSY., ENGINE STOP	1	-----	QTB, SD
7	35120-ZDB-003	SWITCH ASSY., ENGINE STOP	1	-----	QX
8	90013-883-000	BOLT, FLANGE, 6x12 (CT200)	6	-----	QTB, QX, SD
9	90022-888-010	BOLT, FLANGE, 6x20 (CT200)	1	-----	QTB, QX, SD
10	90601-ZH7-013	CLIP, HARNESS	1	-----	QX
11	95701-06008-00	BOLT, FLANGE, 6x8	1	-----	QX



ZDB0E1400C

Ref. No.	L.O.N.	(Relative ref. Number) Description	F.R.T.
1	3111B1	GASKET SET, CARBURETOR	0.3
2	3111E1	VALVE SET, FLOAT AND/OR FLOAT SET	0.3
4	3111A3	CHAMBER SET, FLOAT AND/OR GASKET, FLOAT CHAMBER	0.2
6	3111D7	SCREW SET, PILOT	0.2
10	3111F3	CARBURETOR	0.2
13	3101L6	PACKING, FUEL STRAINER CUP	0.2
14	3111C0	INSULATOR, CARBURETOR AND/OR PACKING, INSULATOR	0.2
17	3111C8	PACKING, CARBURETOR	0.2
18	8101F9	LEVER, CARBURETOR CHOKE	0.2
22	3101C5	PACKING, FUEL COCK	0.2
26	3111C3	JET, MAIN	0.3

REF No.	PART NO.	DESCRIPTION	REQD. QTY	SERIAL NO.	PARTS CATALOGUE CODE
			GX200D		
1	16010-ZE1-812	GASKET SET	1	-----	QT, QX
	16010-ZE0-025	GASKET SET	1	-----	SD
2	16011-ZE0-005	VALVE SET, FLOAT	1	-----	QT, QX, SD
3	16013-Z0S-B01	FLOAT SET	1	-----	QT, QX, SD
4	16015-Z4M-911	CHAMBER SET, FLOAT	1	-----	QT, QX, SD
5	16016-ZE0-005	SCREW SET, PILOT	1	-----	QT, QX, SD
6	16024-Z5T-901	SCREW SET, DRAIN	1	-----	QT, QX, SD
7	16028-Z5T-901	SCREW SET	1	-----	QT, QX, SD
8	16044-ZE0-005	CHOKE SET	1	-----	QT, SD
	16044-Z4M-911	CHOKE SET	1	-----	QX
9	16100-Z0V-901	CARBURETOR ASSY., (BE59N A)	1	-----	QX
	16100-Z0V-941	CARBURETOR ASSY., (BE69B A)	1	-----	SD
	16100-Z0V-951	CARBURETOR ASSY., (BE59U A)	1	-----	QT
10	16124-ZE0-005	SCREW, THROTTLE STOP	1	-----	QT, QX, SD
11	16166-ZL0-000	NOZZLE, MAIN	1	-----	QT, SD
	16166-Z4V-921	NOZZLE, MAIN	1	-----	QX
	16173-001-004	O-RING	1	-----	QT, QX
12	16211-Z4V-000	INSULATOR, CARBURETOR	1	-----	QT, QX, SD
13	16212-ZH8-800	PACKING, INSULATOR	1	-----	QT, QX, SD
14	16220-Z0V-D70	SPACER COMP., CARBURETOR	1	-----	QT, QX, SD

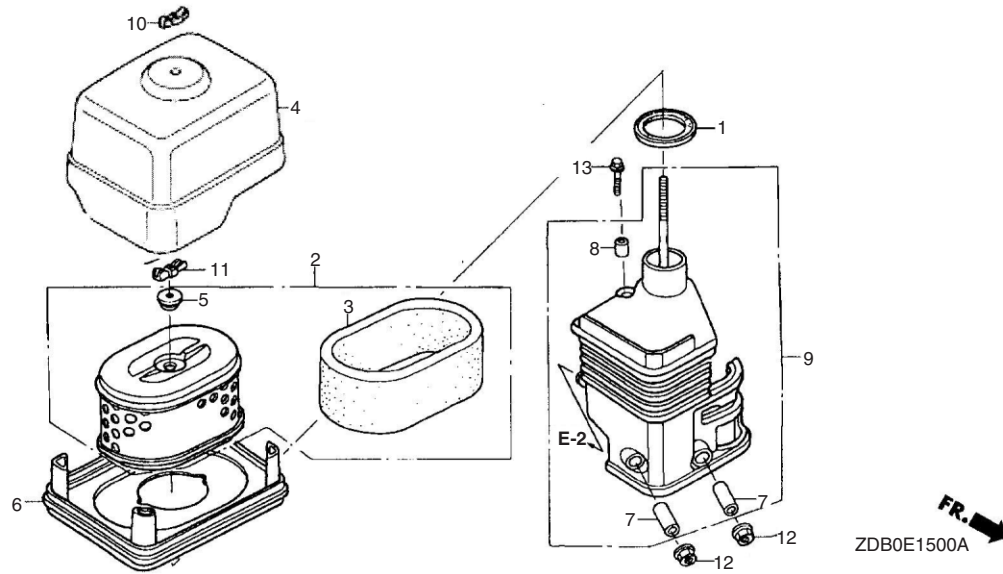


Ref. No.	L.O.N.	(Relative ref. Number) Description	F.R.T.
----------	--------	------------------------------------	--------

Ref. No.	L.O.N.	(Relative ref. Number) Description	F.R.T.

2

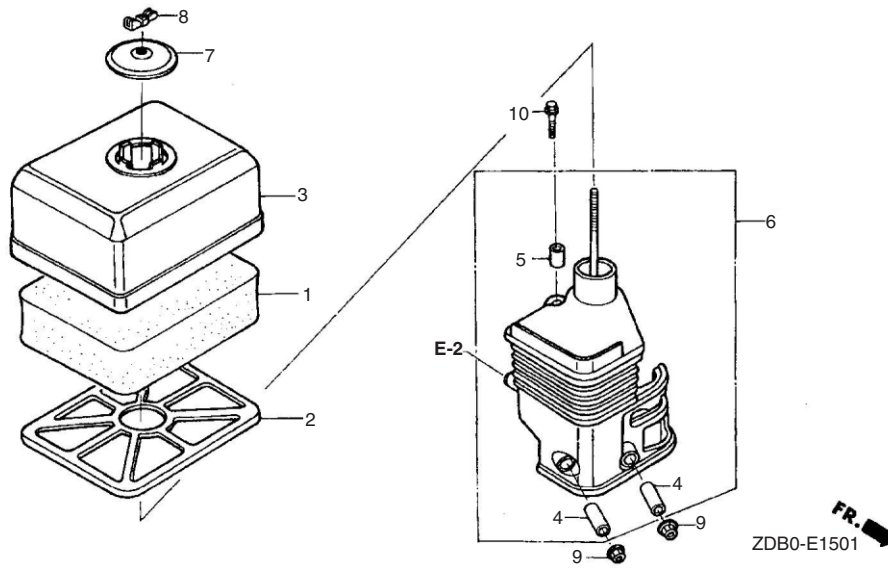
REF No.	PART NO.	DESCRIPTION	REQD. QTY	SERIAL NO.	PARTS CATALOGUE CODE
			GX200D		
16	16221-ZH8-801	PACKING, CARBURETOR	1	-----	QTB, QX, SD
17	16610-ZE1-000	LEVER COMP., CHOKE (STD.)	1	-----	QTB, QX, SD
18	16953-ZE1-812	LEVER, COCK	1	-----	QTB, QX, SD
19	16954-ZE1-812	PLATE, LEVER SETTING	1	-----	QTB, QX, SD
20	16956-ZE1-811	SPRING, COCK LEVER	1	-----	QTB, QX, SD
21	16957-ZE1-812	PACKING, FUEL COCK	1	-----	QTB, QX, SD
22	16959-Z5T-901	FILTER, CUP	1	-----	QTB, QX
23	16967-ZE0-811	CUP, FUEL STRAINER	1	-----	QTB, QX
24	93500-03006-1H	SCREW, PAN, 3x6	2	-----	QTB, QX, SD
25	94305-20122	PIN, SPRING, 2x12	1	-----	QTB, QX, SD
26	99101-ZH8-0700	JET, MAIN, #70	(1)	-----	QTB, QX, SD
	99101-ZH8-0720	JET, MAIN, #72	1	-----	SD
	99101-ZH8-0750	JET, MAIN, #75	1	-----	QTB, QX
	99101-ZH8-0680	JET, MAIN, #68	(1)	-----	QX
27	99204-ZA0-0450	JET SET, PILOT, #45	1	-----	QTB, SD
	99204-ZE2-0400	JET SET, PILOT, #40	1	-----	QX



Ref. No.	L.O.N.	(Relative ref. Number) Description	F.R.T.
1	3121E1	PACKING, ELBOW	0.1
2	3121B8	ELEMENT, AIR CLEANER	0.1
		- INCLUDES : Air cleaner element - inspection	
3	3121C1	FILTER, OUTER	0.1
		- INCLUDES : Outer filter - inspection	
6	3121D6	NOSE, SLICENCER	0.1
9	3121B4	ELBOW, AIR CLEANER	0.1

2

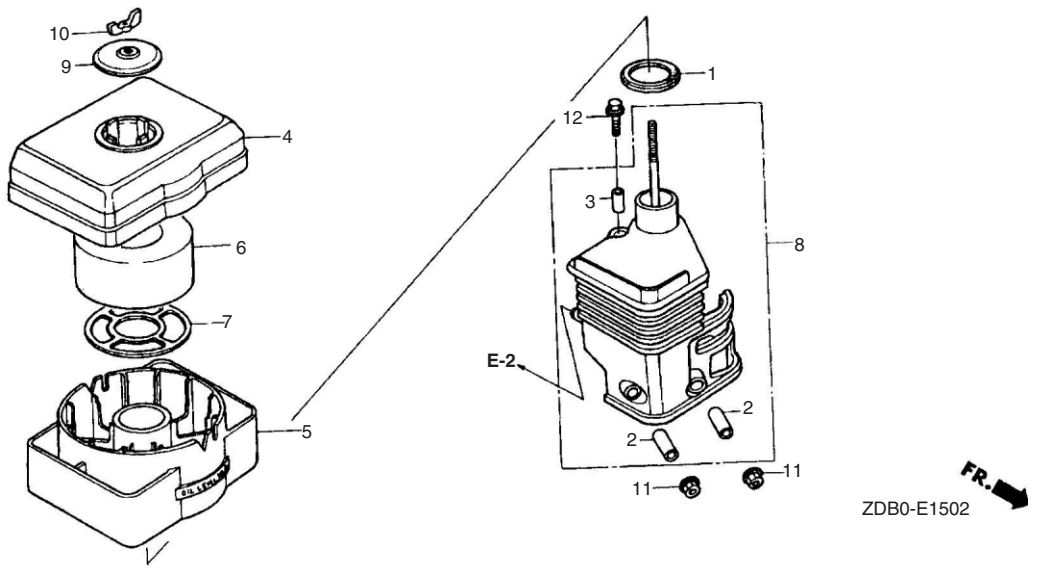
REF No.	PART NO.	DESCRIPTION	REQD. QTY	SERIAL NO.	PARTS CATALOGUE CODE
			GX200D		
1	16271-ZE1-000	PACKING, ELBOW	1	-----	QX
2	17210-ZE1-822	ELEMENT, AIR CLEANER (SILENT)	1	-----	QX
3	17218-ZE1-821	FILTER, OUTER	1	-----	QX
4	17231-Z4M-010	COVER, AIR CLEANER	1	-----	QX
5	17232-891-000	GROMMET, AIR CLEANER	1	-----	QX
6	17235-Z4M-830	NOSE, SILENCER	1	-----	QX
7	17238-ZE7-000	COLLAR, AIR CLEANER	1	-----	QX
8	17239-ZE1-000	COLLAR B, AIR CLEANER	1	-----	QX
9	17410-Z4M-010	ELBOW COMP., AIR CLEANER	1	-----	QX
10	90300-Z1V-000	NUT, AIR CLEANER	1	-----	QX
11	90325-044-000	NUT, TOOL BOX SETTING	1	-----	QX
12	94050-06000	NUT, FLANGE, 6MM	2	-----	QX
13	95701-06020-00	BOLT, FLANGE, 6x20	1	-----	QX



Ref. No.	L.O.N.	(Relative ref. Number) Description	F.R.T.
1	3121B8	ELEMENT, AIR CLEANER - INCLUDES : Air cleaner element - inspection	0.1
6	3121B4	elbow, air cleaner	0.1

2

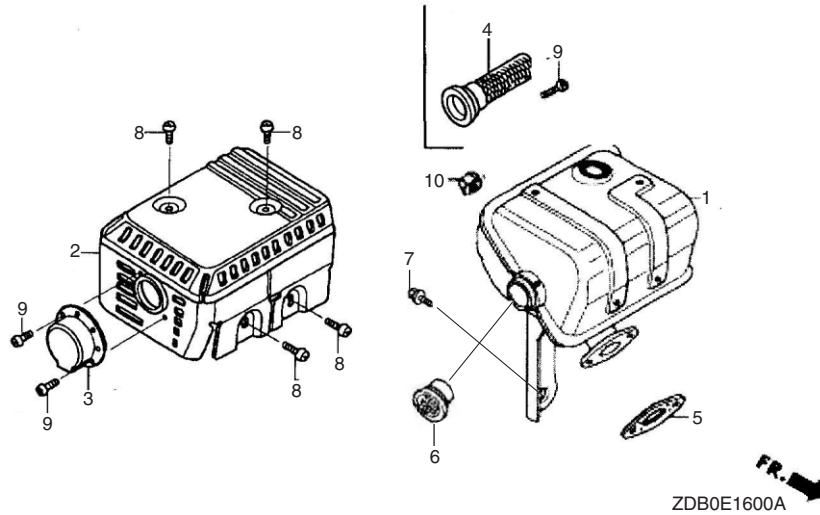
REF No.	PART NO.	DESCRIPTION	REQD. QTY	SERIAL NO.	PARTS CATALOGUE CODE
			GX200D		
1	17211-ZE1-000	ELEMENT, AIR CLEANER (SEMI DRY)	1	-----	SD
2	17212-ZE1-000	GRID, AIR CLEANER (SEMI DRY)	1	-----	SD
3	17231-ZE1-000	COVER, AIR CLEANER (SEMI DRY)	1	-----	SD
4	17238-ZE7-010	COLLAR, AIR CLEANER	2	-----	SD
5	17239-ZE1-000	COLLAR B, AIR CLEANER	1	-----	SD
6	17410-Z4M-010	ELBOW COMP., AIR CLEANER	1	-----	SD
7	17421-ZE1-000	CAP, CLEANER	1	-----	SD
8	90325-044-000	NUT, TOOL BOX SETTING	1	-----	SD
9	94050-06000	NUT, FLANGE, 6MM	2	-----	SD
10	95701-06020-00	BOLT, FLANGE, 6x20	1	-----	SD



Ref. No.	L.O.N.	(Relative ref. Number) Description	F.R.T.
1	3121E1	PACKING, ELBOW	0.1
5	3121E5	PAN, AIR CLEANER OIL	0.1
6	3121B8	ELEMENT, AIR CLEANER	0.1
		- INCLUDES : air cleaner element - inspection	
8	3121B4	ELBOW, AIR CLEANER	0.1

2

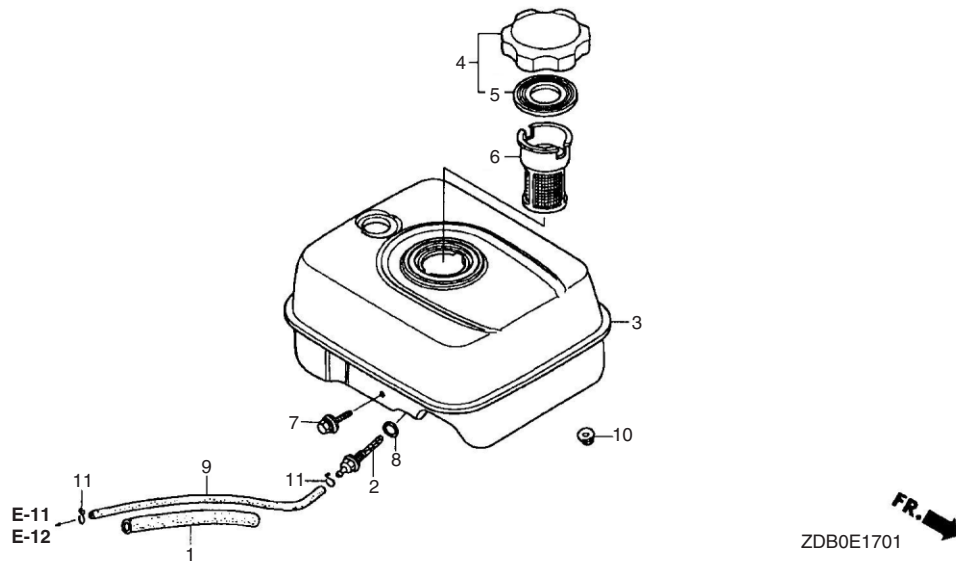
REF No.	PART NO.	DESCRIPTION	REQD. QTY	SERIAL NO.	PARTS CATALOGUE CODE
			GX200D		
1	16271-ZE1-000	PACKING, ELBOW	1	-----	QTB
2	17238-ZE7-010	COLLAR, AIR CLEANER	2	-----	QTB
3	17239-ZE1-000	COLLAR B, AIR CLEANER	1	-----	QTB
4	17401-ZDA-810	BODY, CLEANER (OIL BATH)	1	-----	QTB
5	17402-ZDA-810	PAN, CLEANER OIL (OIL BATH)	1	-----	QTB
6	17403-ZE1-810	ELEMENT, AIR CLEANER (OIL BATH)	1	-----	QTB
7	17404-841-000	GRID, AIR CLEANER	1	-----	QTB
8	17410-Z4M-010	ELBOW COMP., AIR CLEANER	1	-----	QTB
9	17421-ZE1-000	CAP, CLEANER	1	-----	QTB
10	90300-Z1V-000	NUT, AIR CLEANER	1	-----	QTB
11	94050-06000	NUT, FLANGE, 6MM	2	-----	QTB
12	95701-06020-00	BOLT, FLANGE, 6x20	1	-----	QTB



Ref. No.	L.O.N.	(Relative ref. Number) Description	F.R.T.
1		(15)	
	3131C5	MUFFLER, EXHAUST	0.2
3	3131D6	PROTECTOR, EXHAUST MUFFLER	0.2
4	3131A8	DEFLECTOR, EXHAUST MUFFLER	0.1
5	3131A1	ARRESTER, SPARK	0.2
		- INCLUDES : spark arrester check	
6	3131C6	NETTING, WIRE FLANGE	0.2
7	3131B4	GASKET, EXHAUST MUFFLER	0.2

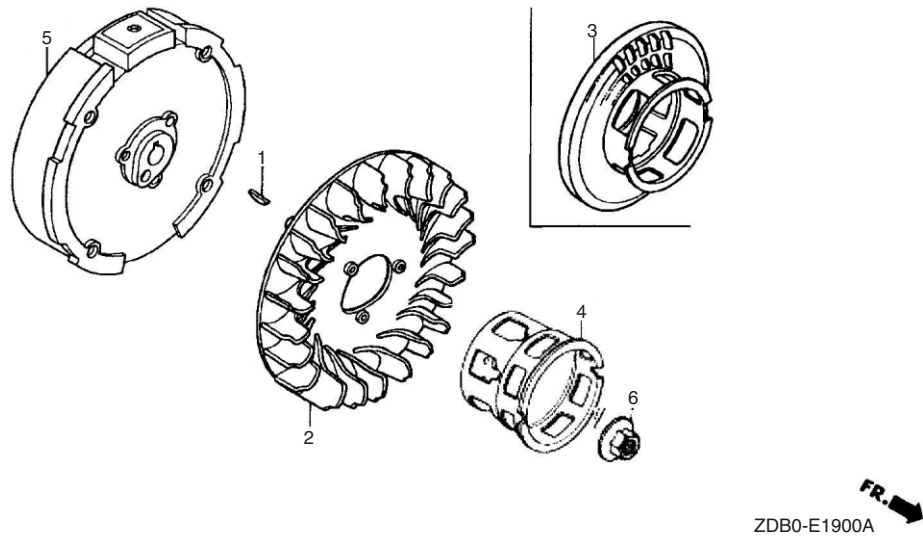


REF No.	PART NO.	DESCRIPTION	REQD. QTY	SERIAL NO.	PARTS CATALOGUE CODE
			GX200D		
1	18310-Z4V-000	MUFFLER COMP.,	1	-----	QT, QX, SD
2	18320-Z4V-000	PROTECTOR COMP., MUFFLER	1	-----	QT, QX, SD
3	18331-883-819	CAP, MUFFLER	1	-----	QT
4	18355-ZL0-000	ARRESTER, SPARK	1	-----	QX
5	18381-Z0T-801	GASKET, MUFFLER	1	-----	QT, QX, SD
6	18361-ZL0-000	NETTING, WIRE FLANGE	1	-----	SD
7	90016-ZE1-000	BOLT, FLANGE, 6x13(CT200)	1	-----	QT, QX, SD
8	90050-ZE1-000	SCREW, TAPPING, 5x8	4	-----	QT, QX, SD
9	90055-ZE1-000	SCREW, TAPPING, 4x6	1	-----	QX
	90055-ZE1-000	SCREW, TAPPING, 4x6	2	-----	QT
10	94001-08000-0S	NUT, HEX., 8MM	2	-----	QT, QX, SD



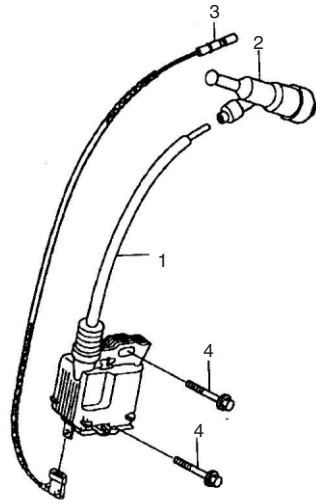
Ref. No.	L.O.N.	(Relative ref. Number) Description	F.R.T.
2		(11)	
2	3101H6	JOINT, FUEL STRAINER	0.2
3	3101H7	TANK, FUEL	0.2
6	6171A1	METER/GAUGE UNIT, FUEL	0.1
8	3101A6	FILTER, FUEL	0.1
12	3101F6	TUBE, FUEL	0.2

REF No.	PART NO.	DESCRIPTION	REQD. QTY	SERIAL NO.	PARTS CATALOGUE CODE
			GX200D		
1	16854-ZH8-000	RUBBER, SUPPORTER (107MM)	1	-----	QTB, QX, SD
2	16955-ZE1-010	JOINT, FUEL TANK	1	-----	QTB, QX, SD
3	17510-ZDA-000	TANK COMP., FUEL	1	-----	QTB, QX, SD
4	17620-Z1T-800	CAP COMP., FUEL FILLER	1	-----	QTB, QX, SD
5	17631-Z1T-800	PACKING, FUEL FILLER CAP	1	-----	QTB, QX, SD
6	17672-ZE2-W01	FILTER, FUEL	1	-----	QTB, SD
7	90004-ZL0-003	BOLT, FLANGE, 6x34	1	-----	QTB, QX, SD
8	91301-ZDA-000	O-RING, 14MM	1	-----	QTB, QX, SD
9	95001-45145-40	TUBE, FUEL, 4.5x145	1	-----	QTB, QX, SD
10	94050-06000	NUT, FLANGE, 6MM	2	-----	QTB, QX, SD
11	95002-02080	CLIP, TUBE (B8)	2	-----	QTB, QX, SD



Ref. No.	L.O.N.	(Relative ref. Number) Description	F.R.T.
2	1141G7	FAN, ENGINE COOLING	0.2
5		(3, 4, 6, 10, 11)	
	1121A9	PULLEY, RECOIL STARTER	0.2
7		(8)	
	2161B5	FLYWHEEL	0.2

REF No.	PART NO.	DESCRIPTION	REQD. QTY	SERIAL NO.	PARTS CATALOGUE CODE
			GX200D		
1	13331-357-000	KEY, SPECIAL WOODRUFF, 25x18	1	-----	QTB, QX, SD
2	19511-ZE1-000	FAN, COOLING	1	-----	QTB, QX, SD
3	28450-ZDB-000	PULLEY COMP., STARTER	-	-----	QTB
4	28451-ZDB-000	PULLEY, STARTER	-	-----	QX, SD
5	31100-ZE7-010	FLYWHEEL, COMP., (STD.)	1	-----	QTB, QX, SD
6	90201-Z0T-800	NUT, SPECIAL, 14MM	1	-----	QTB, QX, SD

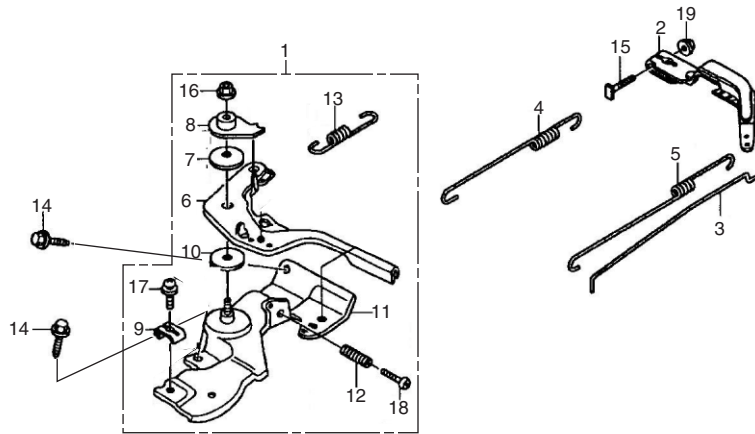


ZDB0E2000B

Ref. No.	L.O.N.	(Relative ref. Number) Description	F.R.T.
1		(13)	
6141A5		COIL, IGNITION (ONE)	0.2
2	6141B8	TERMINAL, HIGH TENSION	0.1
3		(4)	
6141A6		COIL, LAMP	0.3
7		(8, 16)	
6131C3		COIL, CHARGE	0.3
9		(14)	
6111B3		CORD, STOP SWITCH	0.3

2

REF No.	PART NO.	DESCRIPTION	REQD. QTY	SERIAL NO.	PARTS CATALOGUE CODE
			GX200D		
1	30500-Z0T-802	COIL ASSY., IGNITION	1	-----	. QTB, QX, SD
2	30700-Z0T-801	TERMINAL ASSY., HIGH TENSION	1	-----	QTB, QX, SD
3	36101-ZE1-010	CORD, STOP SWITCH (370MM)	1	-----	QTB, QX, SD
4	90121-952-000	BOLT, FLANGE, 6x25 (CT200)	2	-----	QTB, QX, SD



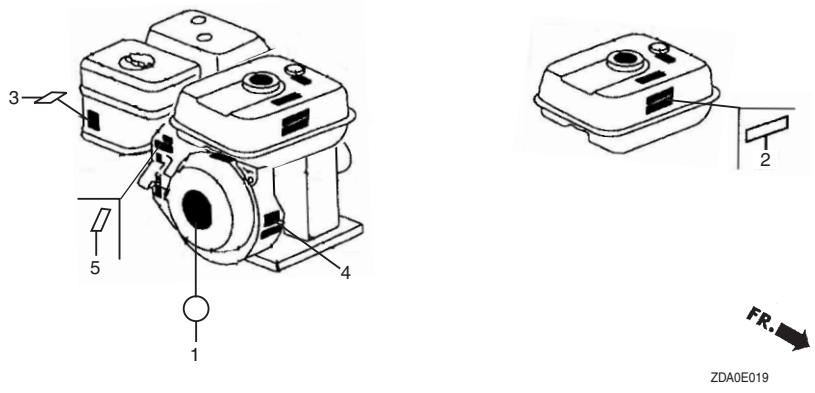
ZDB0E2200E

Ref. No.	L.O.N.	(Relative ref. Number) Description	F.R.T.
3		(7)	
4	1161A0	ARM, GOVERNOR	0.3
5	1161B1	ROD, GOVERNOR	0.3
5	1161C5	SPRING, GOVERNOR	0.2
6		(31)	
	1161C2	SPRING, THROTTLE RETURN	0.3
13	1161A2	BASE, CONTROL	0.3
15	1161B7	SPRING, CABLE RETURN	0.2
29		(2, 25, 34, 35)	
	1161A5	CONTROL, THROTTLE/GOVERNOR ...	0.2
33	8101R4	ROD, THROTTLE	0.3

REF No.	PART NO.	DESCRIPTION	REQD. QTY	SERIAL NO.	PARTS CATALOGUE CODE
			GX200D		
1	16500-Z4M-820	CONTROL ASSY., (REMOTE)	1	-----	QT, B, QX, SD
2	16551-ZL0-000	ARM, GOVERNOR	1	-----	QT, B, QX, SD
3	16555-Z4M-000	ROD, GOVERNOR	1	-----	QT, B, QX, SD
4	16561-ZL0-000	SPRING, GOVERNOR	1	-----	QT, B, QX, SD
5	16562-ZE1-020	SPRING, THROTTLE RETURN	1	-----	QT, B, QX, SD
6	16571-Z4M-000	LEVER, CONTROL	1	-----	QT, B, QX, SD
7	16574-ZE1-000	SPRING, LEVER	1	-----	QT, B, QX, SD
8	16575-ZH8-000	WASHER, CONTROL LEVER	1	-----	QT, B, QX, SD
9	16576-891-000	HOLDER, CABLE	1	-----	QT, B, QX, SD
10	16578-ZE1-000	SPACER, CONTROL LEVER	1	-----	QT, B, QX, SD
11	16580-Z4M-810	BASE COMP., CONTROL (REMOTE)	1	-----	QT, B, QX, SD
12	16584-883-300	SPRING, CONTROL ADJUSTING	1	-----	QT, B, QX, SD
13	16592-ZE1-810	SPRING, CABLE RETURN	1	-----	QT, B, QX, SD
14	90013-883-000	BOLT, FLANGE, 6x12 (CT200)	2	-----	QT, B, QX, SD
15	90015-ZE5-010	BOLT, GOVERNOR ARM	1	-----	QT, B, QX, SD
16	90114-SA0-000	NUT, SELF-LOCK, 6MM	1	-----	QT, B, QX, SD
17	93500-05016-0A	SCREW, PAN, 5x16	1	-----	QT, B, QX, SD
18	93500-05025-0H	SCREW, PAN, 5x25	1	-----	QT, B, QX, SD
19	94050-06000	NUT, FLANGE, 6MM	1	-----	QT, B, QX, SD

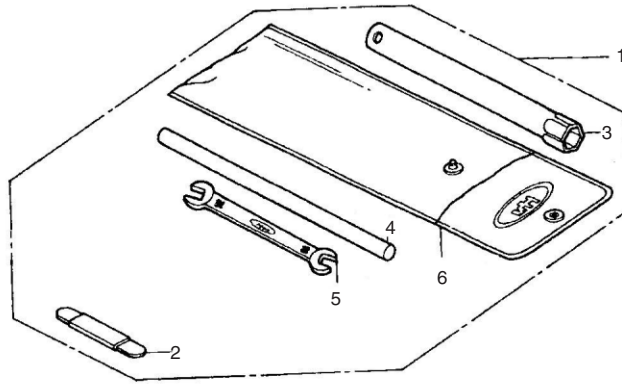
Ref. No. L.O.N. (Relative ref. Number) Description F.R.T.

NO INFORMATION



3

REF No.	PART NO.	DESCRIPTION	REQD. QTY	SERIAL NO.	PARTS CATALOGUE CODE
			GX200D		
1	87521-Z4V-000	EMBLEM	1	-----	QTB, QX, SD
2	87522-ZDA-000	LABEL, CAUTION	1	-----	QTB, QX, SD
3	87528-Z4M-000	MARK, CHOKE	1	-----	QTB, QX, SD
4	87532-ZH8-810	MARK, OIL ALERT (ENGLISH)	1	-----	QX
5	87114-ZH7-000	LABEL WARNING (NOT CERTIFIED FOR SALE)	1	-----	QTB, QX, SD



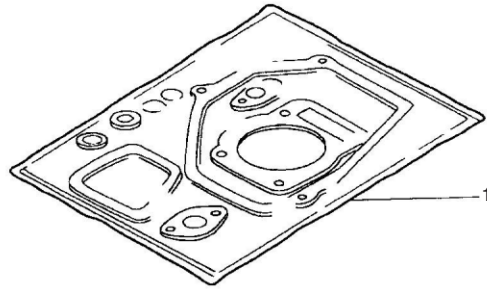
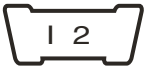
Ref. No.	L.O.N.	(Relative ref. Number) Description	F.R.T.
----------	--------	------------------------------------	--------

NO INFORMATION

REF No.	PART NO.	DESCRIPTION	REQD. QTY	SERIAL NO.	PARTS CATALOGUE CODE
			GX200D		
1	89000-ZDA-000	TOOL KIT	1	-----	QTB, QX, SD
2	89210-ZF1-000	GAUGE ASSY., THICKNESS	1	-----	QTB, QX, SD
3	89216-Z0T-800	WRENCH, SPARK PLUG	1	-----	QTB, QX, SD
4	89219-805-000	HANDLE, BOX WRENCH	1	-----	QTB, QX, SD
5	99001-10120	SPANNER, 10x12	1	-----	QTB, QX, SD
6	99008-02300	BAG, TOOL, 230 MM	1	-----	QTB, QX, SD

EOP -1

GASKET KIT



Ref. No.	L.O.N.	(Relative ref. Number) Description	F.R.T.
----------	--------	------------------------------------	--------

NO INFORMATION

3

REF No.	PART NO.	DESCRIPTION	REQD. QTY	SERIAL NO.	PARTS CATALOGUE CODE
			GX200D		
1	06111-ZL0-000	GASKET KIT	1	-----	. QTB, QX, SD
	11381-ZH8-801	PACKING, CASE COVER	1		
	12251-ZL0-003	GASKET, CYLINDER HEAD	1		
	12391-ZE1-000	PACKING, HEAD COVER	1		
	15625-ZE1-003	PACKING, OIL FILLER CAP	2		
	16212-ZH8-800	PACKING, INSULATOR	1		
	16221-ZH8-801	PACKING, CARBURETOR	1		
	18381-Z0T-801	GASKET, MUFFLER	1		

PART NUMBER INDEX

L 2

Part No.	Address	Page	Ref.	Part No.	Address	Page	Ref.	Part No.	Address	Page	Ref.	Part No.	Address	Page	Ref.
90121-952-000	G4	34	4	95701-06018-00	E3	24	15								
90201-Z0T-800	G3	33	6	95701-06020-00	F3	28	13								
90206-ZE1-000	E2	23	16	95701-06020-00	F4	29	10								
90300-Z1V-000	F3	28	10	95701-06020-00	F5	30	12								
90300-Z1V-000	F5	30	10	95701-08032-00	D3	19	9								
90325-044-000	F3	28	11	95701-08060-00	D1	17	13								
90325-044-000	F4	29	8												
90451-ZE1-000	D2	18	7	96000											
90473-842-000	D4	20	4	96100-62050-00	D3	19	10								
90601-ZE1-000	D2	18	8	98000											
90551-ZE1-000	D5	21	6												
90601-ZH7-013	E4	25	10	98079-56871	D1	17	14								
90602-ZE1-000	D2	18	9	99000											
90741-883-810\	D4	20	5												
90745-ZE1-600	D4	20	5	99001-10120	I1	37	5								
91000				99008-02300	I1	37	6								
91001-Z4X-003	D2	18	10	99101-ZH8-0680	F2	27	26								
91202-YA0-P01	D2	18	11	99101-ZH8-0700	F2	27	26								
91202-YA0-P01	D3	19	7	99101-ZH8-0720	F2	27	26								
91301-ZDA-000	D2	18	12	99101-ZH8-0750	F2	27	26								
91301-ZDA-000	G2	32	8	99204-ZA0-0450	F2	27	27								
				99204-ZE2-0400	F2	27	27								
93000															
93500-03006-1H	F2	27	24												
93500-05016-0A	G5	35	17												
93500-05025-0H	G5	35	18												
94000															
94001-08000-0S	G1	31	10												
94050-06000	F3	28	12												
94050-06000	F4	29	9												
94050-06000	F5	30	11												
94050-06000	G2	32	10												
94050-06000	G5	35	19												
94050-10000	D2	18	13												
94101-06800	D2	18	14												
94251-08000	D2	18	15												
94301-08140	D3	19	8												
94301-10160	D1	17	12												
94305-20122	F2	27	25												
95000															
95001-45145-40	G2	32	9												
95002-02080	G2	32	11												
95701-06008-00	E4	25	11												
95701-06012-00	D2	18	16												

4

PART NAME INDEX

Part Name	Address	Page	Ref.	Part Name	Address	Page	Ref.	Part Name	Address	Page	Ref.	
[A]				CHOKE SET	F1	26	8	GASKET, MUFFLER	G1	31	5	
ALERT UNIT, OIL	E4	25	5	CLIP, GOVERNOR HOLDER	D2	18	9	GASKET, MUFFLER	I2	38	1	
ARM, GOVERNOR	G5	35	2	CLIP, HARNESS	E4	25	10	GAUGE ASSY., THICKNESS	I1	37	2	
ARM, VALVE ROCKER	E1	22	4	CLIP, PISTON PIN, 18MM	D5	21	6	GOVERNOR ASSY.,	D2	18	2	
ARRESTER, SPARK	G1	31	4	CLIP, TUBE (B8)	G2	32	11	GRID, AIR CLEANER (SEMI DRY)	F4	29	2	
[B]				CLIP, VALVE GUIDE	D1	17	4	GRID, AIR CLEANER	F5	30	7	
BAG, TOOL, 230 MM	I1	37	6	COIL ASSY., IGNITION	G4	34	1	GROMMET, AIR CLEANER	F3	28	5	
BARREL ASSY., CYLINDER	D2	18	1	COLLAR B, AIR CLEANER	F5	30	3	GUIDE, EX. VALVE (O.S)	D1	17	2	
BARREL ASSY., CYLINDER	D2	18	1	COLLAR B, AIR CLEANER	F3	28	8	GUIDE, IN. VALVE (O.S)	D1	17	1	
BASE COMP., CONTROL (REMOTE)	G5	35	11	COLLAR B, AIR CLEANER	F4	29	5	GUIDE, PUSH ROD	E2	23	14	
BEARING, RADIAL BALL 6205 NSK.....	D2	18	10	COLLAR, AIR CLEANER	F3	28	7	GUIDE, RATCHET	E3	24	7	
BEARING, RADIAL BALL, 6205 NSK	D3	19	10	COLLAR, AIR CLEANER	F5	30	2	[H]				
BODY, CLEANER (OIL BATH)	F5	30	4	COLLAR, AIR CLEANER	F4	29	4	HANDLE, BOX WRENCH	I1	37	4	
BOLT, CONNECTING ROD	D5	21	5	CONTROL ASSY., (REMOTE)	G5	35	1	HEAD COMP., CYLINDER	D1	17	3	
BOLT, DRAIN PLUG	D2	18	6	CORD, STOP SWITCH (370MM)	G4	34	3	HOLDER, CABLE	G5	35	9	
BOLT, FLANGE, 6x12 (Ct200)	G5	35	14	COVER ASSY., CRANKCASE	D3	19	1	[I]				
BOLT, FLANGE, 6x12 (CT200)	D1	17	9	COVER ASSY., CRANKCASE	D3	19	1	INSULATOR, CARBURETOR	F1	26	13	
BOLT, FLANGE, 6x12 (Ct200)	E4	25	8	COVER COMP., FAN	E4	25	1	[J]				
BOLT, FLANGE, 6x12	D2	18	16	COVER COMP., HEAD	D1	17	6	JET SET, PILOT, #40	F2	27	27	
BOLT, FLANGE, 6x13(CT200)	G1	31	7	COVER, AIR CLEANER (SEMI DRY)	F4	29	3	JET SET, PILOT, #45	F2	27	27	
BOLT, FLANGE, 6x18	E3	24	15	COVER, AIR CLEANER	F3	28	4	JET, MAIN, #68	F2	27	26	
BOLT, FLANGE, 6x20 (Ct200)	E4	25	9	CRANKSHAFT COMP.,	D4	20	1	JET, MAIN, #70	F2	27	26	
BOLT, FLANGE, 6x20	F5	30	12	CRANKSHAFT COMP.,	D4	20	2	JET, MAIN, #72	F2	27	26	
BOLT, FLANGE, 6x20	F3	28	13	CUP, FUEL STRAINER	F2	27	23	JET, MAIN, #75	F2	27	26	
BOLT, FLANGE, 6x20	F4	29	10	[D]				JOINT, FUEL TANK	G2	32	2	
BOLT, FLANGE, 6x25 (Ct200)	G4	34	4	DOWEL PIN, 10x16	D1	17	12	[K]				
BOLT, FLANGE, 6x34	G2	32	7	DOWEL PIN, 8x14	D3	19	8	KEY, 4.78x4.78x38	D4	20	5	
BOLT, FLANGE, 6x8	E4	25	11	[E]				KEY, 5x5x33 (YELLOW)	D4	20	5	
BOLT, FLANGE, 8x32	D3	19	9	ELBOW COMP., AIR CLEANER	F5	30	8	KEY, SPECIAL WOODRUFF, 25x18	G3	33	1	
BOLT, FLANGE, 8x60	D1	17	13	ELBOW COMP., AIR CLEANER	F3	28	9	KNOB, RECOIL STARTER	E3	24	11	
BOLT, GOVERNOR ARM	G5	35	15	ELBOW COMP., AIR CLEANER	F4	29	6	KNOB, REINFORCEMENT	E3	24	13	
BOLT, HEX., 5/16"	D4	20	3	ELEMENT, AIR CLEANER (OIL BATH)	F5	30	6	[L]				
BOLT, PIVOT, 8MM	E2	23	15	ELEMENT, AIR CLEANER (SEMI DRY)	F4	29	1	LABEL WARNING (NOT CERTIFIED FOR SALE)..	H1	36	5	
BOLT, STUD, 6x112	D1	17	10	ELEMENT, AIR CLEANER (SILENT)	F3	28	2	LABEL, CAUTION	H1	36	2	
BOLT, STUD, 8x32	D1	17	11	EMBLEM	H1	36	1	LEVER COMP., CHOKE (STD.)	F2	27	17	
CAMSHAFT ASSY.,	E1	22	2	[F]				LEVER, COCK	F2	27	18	
[C]				FAN, COOLING	G3	33	2	LEVER, CONTROL	G5	35	6	
CAP ASSY., OIL FILLER, (3.7MM)	D3	19	3	FILTER, CUP	F2	27	22	LIFTER, VALVE	E1	22	9	
CAP ASSY., OIL FILLER, (4.9MM)	D3	19	4	FILTER, FUEL	G2	32	6	[M]				
CAP ASSY., OIL FILLER,	D3	19	5	FILTER, OUTER	F3	28	3	MARK, CHOKE	H1	36	3	
CAP COMP., FUEL FILLER	G2	32	4	FLOAT SET	F1	26	3	MARK, OIL ALERT (ENGLISH)	H1	36	4	
CAP, CLEANER	F5	30	9	FLYWHEEL, COMP., (STD.)	G3	33	5	MUFFLER COMP.,	G1	31	1	
CAP, CLEANER	F4	29	7	[G]				[N]				
CAP, MUFFLER	G1	31	3	GASKET KIT	I2	38	1	NETTING, WIRE FLANGE	G1	31	6	
CARBURETOR ASSY., (BE59N A)	F1	26	9	GASKET SET	F1	26	1	NOSE, SILENCER	F3	28	6	
CARBURETOR ASSY., (BE59U A)	F1	26	9	GASKET SET	F1	26	1					
CARBURETOR ASSY., (BE69B A)	F1	26	9	GASKET, CYLINDER HEAD	I2	38	1					
CASE COMP., RECOIL STARTER	E3	24	3	GASKET, CYLINDER HEAD	D1	17	5					
CHAMBER SET, FLOAT	F1	26	4									
CHOKE SET	F1	26	8									

PART NAME INDEX

Part Name	Address	Page	Ref.	Part Name	Address	Page	Ref.	Part Name	Address	Page	Ref.
NOZZLE, MAIN	F1	26	11	PLATE, LEVER SETTING	F2	27	19	SPRING, RECOIL STARTER	E3	24	9
NOZZLE, MAIN	F1	26	11	PLATE, SIDE (STD.)	E4	25	3	SPRING, RETURN	E3	24	10
NUT, AIR CLEANER	F5	30	10	PLUG, SPARK (BP6ES)	D1	17	14	SPRING, THROTTLE RETURN	G5	35	5
NUT, AIR CLEANER	F3	28	10	PROTECTOR COMP., MUFFLER	G1	31	2	SPRING, VALVE	E1	22	10
NUT, FLANGE, 10MM	D2	18	13	PULLEY COMP., STARTER	G3	33	3	SPRING, WEIGHT RETURN	E1	22	6
NUT, FLANGE, 6MM	F5	30	11	PULLEY, STARTER	G3	33	4	STARTER ASSY., RECOIL	E3	24	1
NUT, FLANGE, 6MM	F3	28	12					SWITCH ASSY., ENGINE STOP	E4	25	6
NUT, FLANGE, 6MM	G2	32	10	[R]				SWITCH ASSY., ENGINE STOP	E4	25	7
NUT, FLANGE, 6MM	G5	35	19	RATCHET, STARTER	E3	24	5	SWITCH ASSY., OIL LEVEL	D2	18	5
NUT, FLANGE, 6MM	F4	29	9	REEL, RECOIL STARTER	E3	24	4				
NUT, HEX., 8MM	G1	31	11	RETAINER, EX. VALVE SPRING	E2	23	12	[T]			
NUT, PIVOT ADJUSTING	E2	23	16	RETAINER, IN. VALVE SPRING	E2	23	11	TANK COMP., FUEL	G2	32	3
NUT, SELF-LOCK, 6MM	G5	35	16	RING SET, PISTON (0.25)	D5	21	1	TERMINAL ASSY., HIGH TENSION	G4	34	2
NUT, SPECIAL, 14MM	G3	33	6	RING SET, PISTON (0.25)	D5	21	1	TOOL KIT	I1	37	1
NUT, TOOL BOX SETTING	F3	28	11	RING SET, PISTON (0.50)	D5	21	1	TUBE, BREATHER	D1	17	8
NUT, TOOL BOX SETTING	F4	29	8	RING SET, PISTON (0.50)	D5	21	1	TUBE, FUEL, 4.5x145	G2	32	9
				RING SET, PISTON (0.75)	D5	21	1				
[O]				RING SET, PISTON (STD.)	D5	21	1	[V]			
OIL SEAL, 25x41x6	D2	18	11	RING SET, PISTON (STD.)	D5	21	1	VALVE SET, FLOAT	F1	26	2
OIL SEAL, 25x41x6	D3	19	7	RING SET, PISTON (STD.)	D5	21	1	VALVE, EX	E1	22	8
O-RING	F1	26	12	ROD ASSY., CONNECTING	D5	21	4	VALVE, IN	E1	22	7
O-RING, 14MM	D2	18	12	ROD, GOVERNOR	G5	35	3				
O-RING, 14MM	G2	32	8	ROD, PUSH	E1	22	3	[W]			
				ROPE, RECOIL STARTER	E3	24	12	WASHER, 8MM	D4	20	4
				ROTATOR, VALVE	E2	23	13	WASHER, CONTROL LEVER	G5	35	8
[P]				RUBBER, SUPPORTER (107MM)	G2	32	1	WASHER, DRAIN PLUG, 10.2MM	D2	18	8
PACKING, CARBURETOR	I2	38	1					WASHER, PLAIN, 6MM	D2	18	14
PACKING, CARBURETOR	F2	27	16	[S]				WASHER, THRUST, 6MM	D2	18	7
PACKING, CASE COVER	I2	38	1	SCREW SET	F1	26	7	WRENCH, SPARK PLUG	I1	37	3
PACKING, CASE COVER(NON ASBESTOS) ...	D3	19	2	SCREW SET, DRAIN	F1	26	6				
PACKING, ELBOW	F5	30	1	SCREW SET, PILOT	F1	26	5				
PACKING, ELBOW	F3	28	1	SCREW, PAN, 3x6	F2	27	24				
PACKING, FUEL COCK	F2	27	21	SCREW, PAN, 5x16	G5	35	17				
PACKING, FUEL FILLER CAP	G2	32	5	SCREW, PAN, 5x25	G5	35	18				
PACKING, HEAD COVER	D1	17	7	SCREW, SETTING	E3	24	14				
PACKING, HEAD COVER	I2	38	1	SCREW, TAPPING, 4x6	G1	31	9				
PACKING, INSULATOR	F1	26	14	SCREW, TAPPING, 4x6	G1	31	10				
PACKING, INSULATOR	I2	38	1	SCREW, TAPPING, 5x8	G1	31	8				
PACKING, OIL FILLER CAP	D3	19	6	SCREW, THROTTLE STOP	F1	26	10				
PACKING, OIL FILLER CAP	D3	19	6	SEAL, VALVE STEM	E1	22	1				
PACKING, OIL FILLER CAP	I2	38	1	SHAFT, GOVERNOR ARM	D2	18	4				
PAN, CLEANER OIL (OIL BATH)	F5	30	5	SHROUD COMP.,	E4	25	4				
PIN, LOCK, 8MM	D2	18	15	SLIDER, GOVERNOR	D2	18	3				
PIN, PISTON	D5	21	3	SPACER COMP., CARBURETOR	F1	26	15				
PIN, SPRING, 2x12	F2	27	25	SPACER, CONTROL LEVER	G5	35	10				
PISTON (0.25)	D5	21	2	SPACER, RECOIL MOUNTING	E3	24	2				
PISTON (0.50)	D5	21	2	SPANNER, 10x12	I1	37	5				
PISTON (0.75)	D5	21	2	SPRING, CABLE RETURN	G5	35	13				
PISTON (STD.)	D5	21	2	SPRING, COCK LEVER	F2	27	20				
PIVOT, ROCKER ARM	E1	22	5	SPRING, CONTROL ADJUSTING	G5	35	12				
PLATE COMP., SIDE (OIL ALERT)	E4	25	2	SPRING, FRICTION	E3	24	8				
PLATE, FRICTION	E3	24	6	SPRING, GOVERNOR	G5	35	4				
				SPRING, LEVER	G5	35	7				

HONDA
The Power of Dreams

HONDA
POWER PRODUCTS

Honda Siel Power Products Limited

Head Office :
Plot No. 5, Sector - 41 Kasma,
Greater Noida Industrial Development Area,
District Gautam Budh Nagar - 201306
Uttar Pradesh (INDIA)
Tel. : 0120-2341050-59 Fax : 0120-2341077-78
E-mail : ho.service@hspp.com

MP.750.2013.08