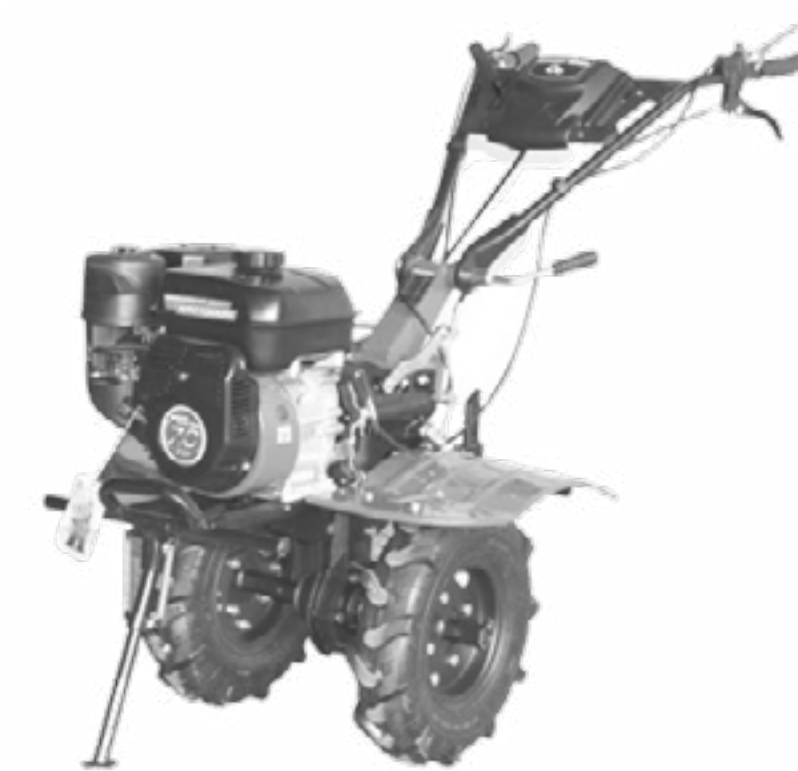


## INTERCULTIVATOR/POWER WEEDER AM-RTP-7P

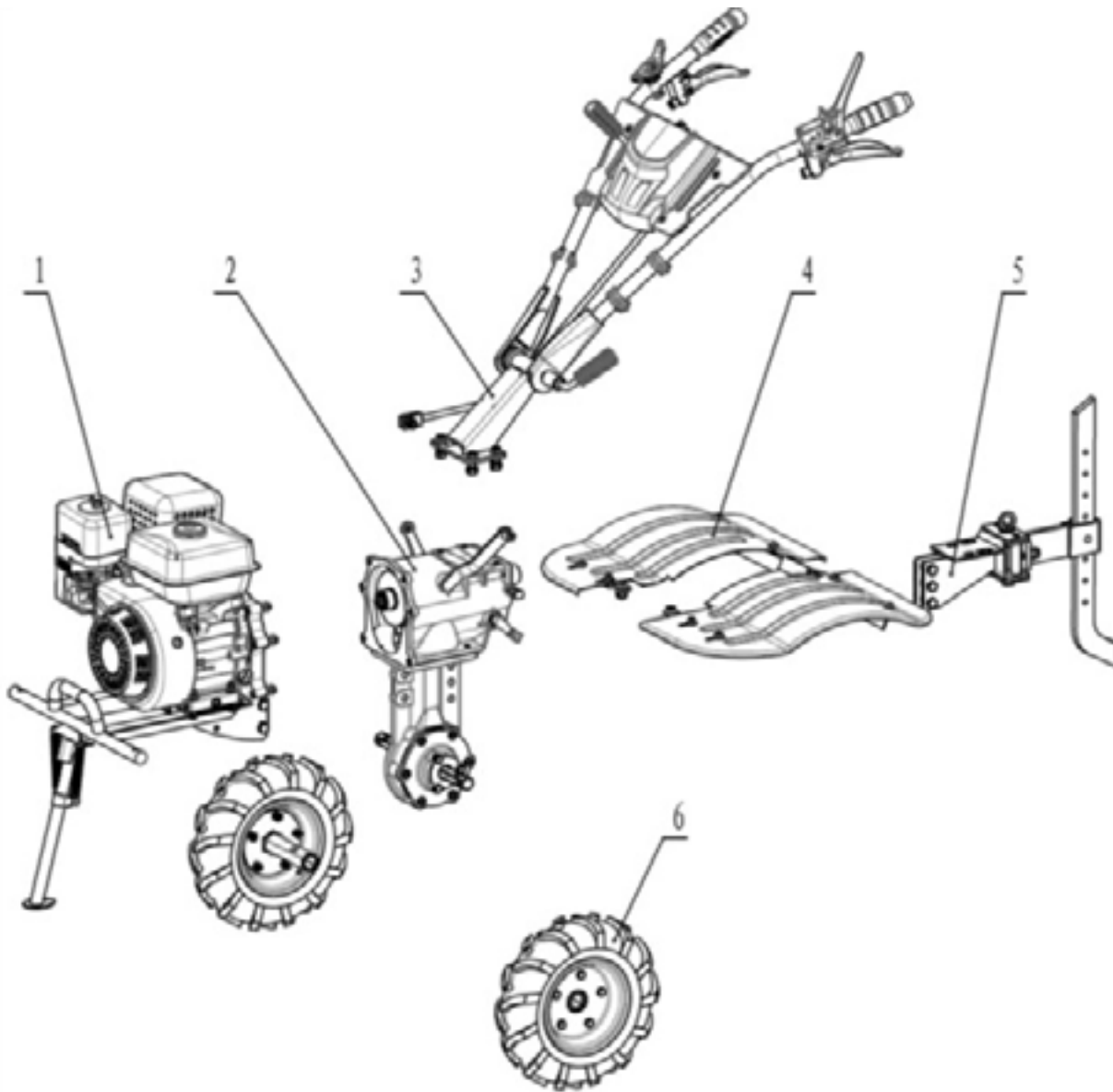


**DISCLAIMER :** DUE TO CONTANT UPGRADATION FEATURES & SPECIFICATIONS ARE SELECT TO CHANGE WITHOUT NOTICE  
BEFORE OPERATING THIS MACHINE PLEASE READ THIS INSTRUCTIONS MANUAL CAREFULLY

## TECHNICAL SPECIFICATIONS

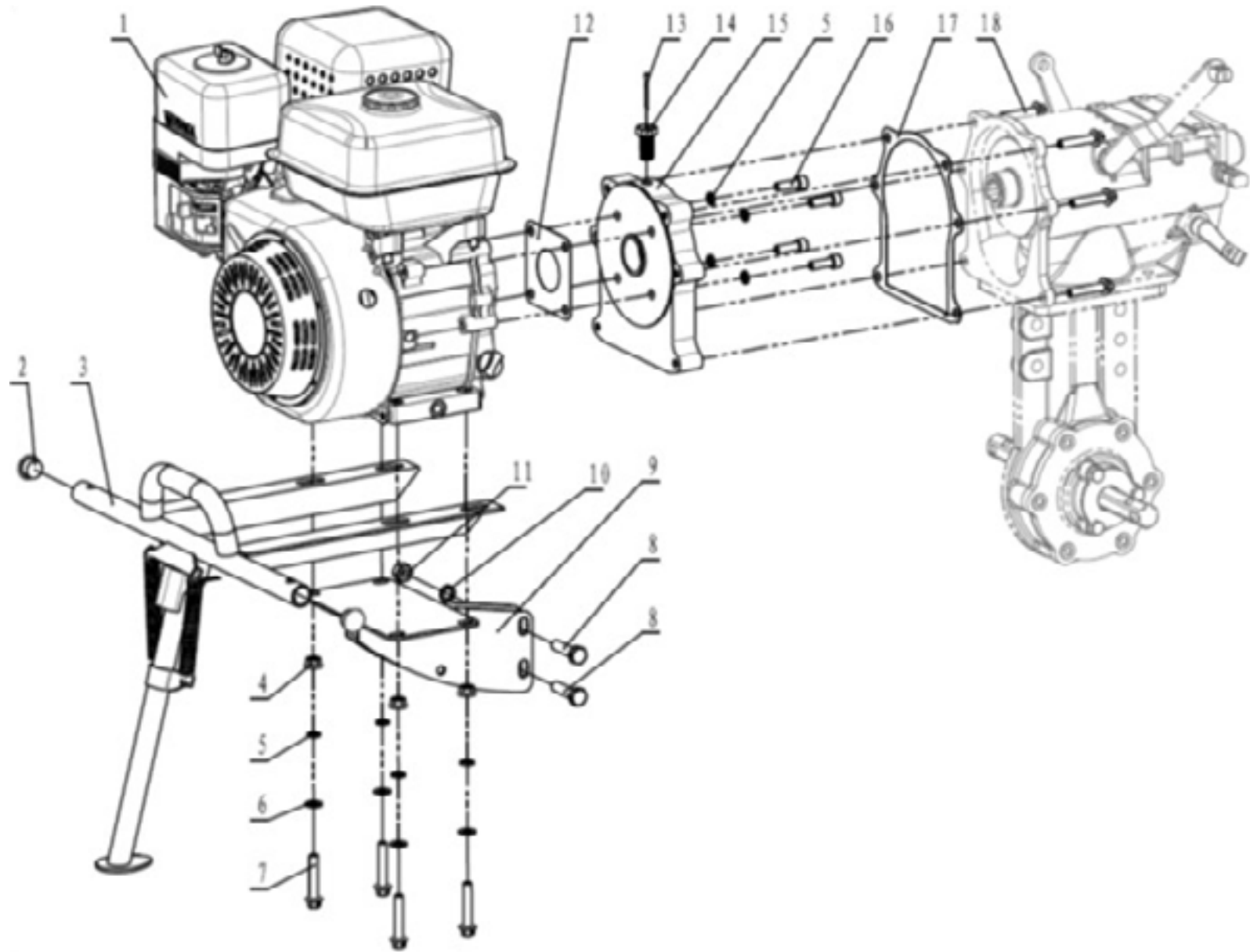
MODEL	AM-RTP-7P
ENGINE MODEL	AM-170FP
Power (KW/RPM)	4.0/3600
Starting Mode	Manual Start
Working Depth(cm)	≥10
Working Width (cm)	100
Weight (Kg)	70KG

# MACHINE PARTS - TA01



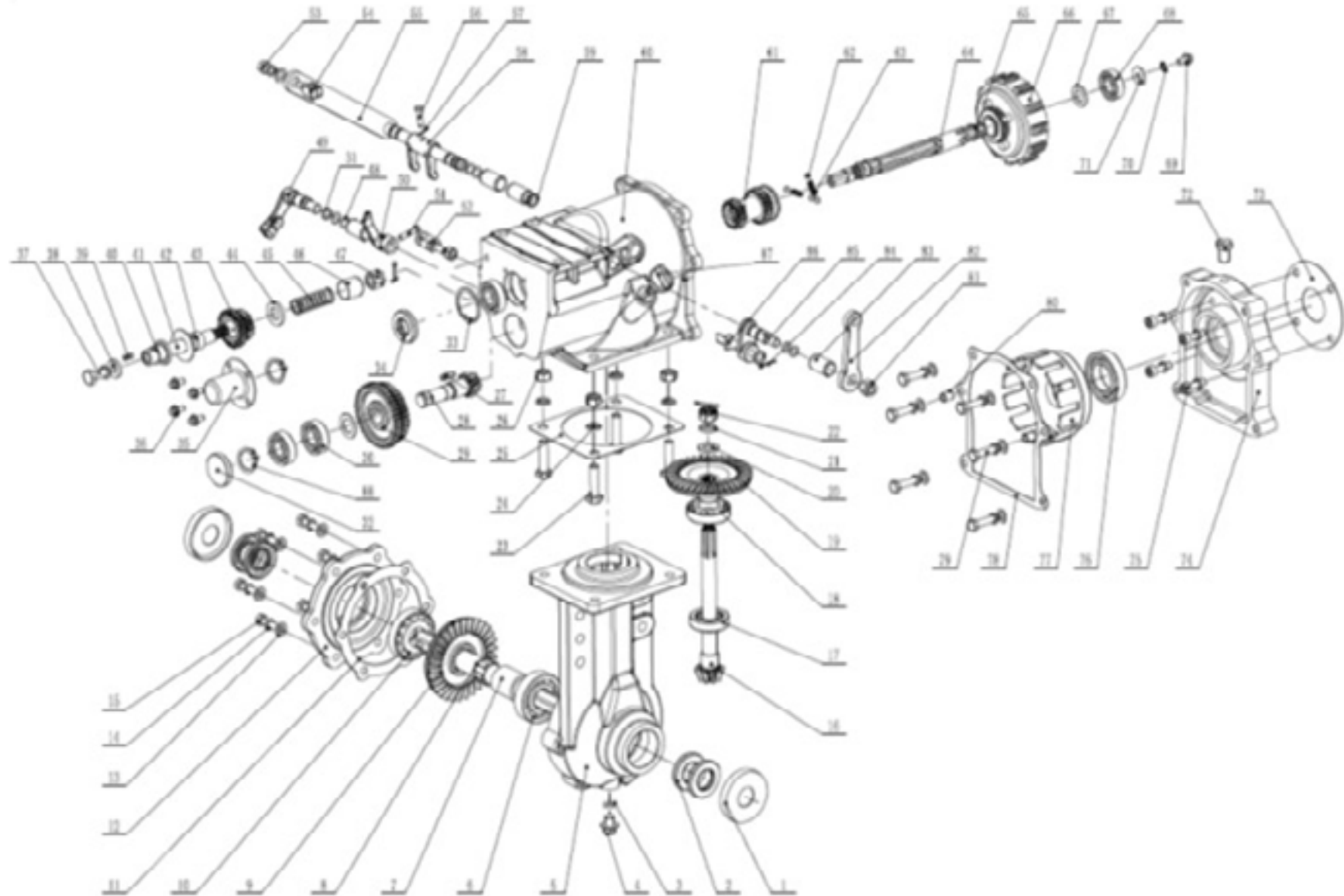
SL NO	PART NO	DESCRIPTION
1	AM-RTP-7P-TA01	Bumper engine support frame
2	AM-RTP-7P-TA02	Walking case assy
3	AM-RTP-7P-TA03	Handrail parts
4	AM-RTP-7P-TA04	Trailer body connecting frame
5	AM-RTP-7P-TA05	Fender parts
6	AM-RTP-7P-TA06	Wheels parts

# Bumper, engine support frame and flange parts - TB01



SL NO	PART NO	DESCRIPTION	SL NO	PART NO	DESCRIPTION
1	AM-RTP-7P-TB01	Gasoline Engine AM-170FP	11	AM-RTP-7P-TB11	Hex nut
2	AM-RTP-7P-TB02	Bumper plug	12	AM-RTP-7P-TB12	Flange gasket
3	AM-RTP-7P-TB03	Bumper	13	AM-RTP-7P-TB13	Cotter pin
4	AM-RTP-7P-TB04	Hex nut	14	AM-RTP-7P-TB14	Bolt
5	AM-RTP-7P-TB05	spring washer	15	AM-RTP-7P-TB15	Flange
6	AM-RTP-7P-TB06	Washer	16	AM-RTP-7P-TB16	screw
7	AM-RTP-7P-TB07	Hex bolt with flange	17	AM-RTP-7P-TB17	Aiproof gasket,gear box
8	AM-RTP-7P-TB08	Hexagon head bolts-full thread	18	AM-RTP-7P-TB18	Hex bolt with flange
9	AM-RTP-7P-TB09	Engine Support frame			
10	AM-RTP-7P-TB10	spring washer			

# Transmission box assembly - TC



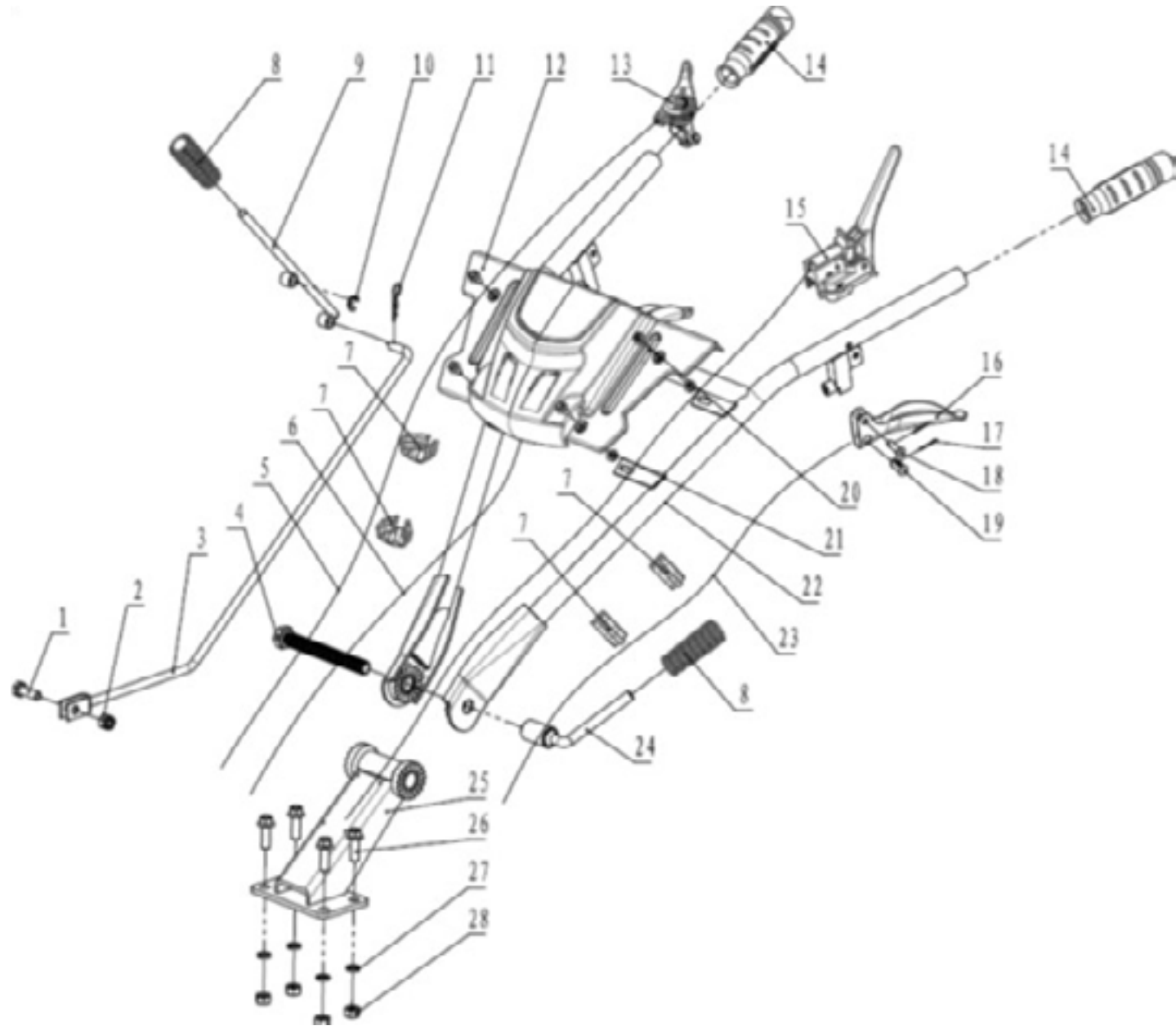
SL NO	PART NO	DESCRIPTION	SL NO	PART NO	DESCRIPTION
1	AM-RTP-7P-TC01	Dust cover	17	AM-RTP-7P-TC17	appered roller bearing
2	AM-RTP-7P-TC02	Oil Seal	18	AM-RTP-7P-TC18	appered roller bearing
3	AM-RTP-7P-TC03	O-rings	19	AM-RTP-7P-TC19	Driven umbrella gear
4	AM-RTP-7P-TC04	Oil drain cock	20	AM-RTP-7P-TC20	Gasket
5	AM-RTP-7P-TC05	Walking box	21	AM-RTP-7P-TC21	Spring washer
6	AM-RTP-7P-TC06	Deep Groove Ball Bearing	22	AM-RTP-7P-TC22	Nut
7	AM-RTP-7P-TC07	bushing	23	AM-RTP-7P-TC23	Bolt
8	AM-RTP-7P-TC08	Hexagonal output shaft	24	AM-RTP-7P-TC24	Spring washer
9	AM-RTP-7P-TC09	Walking bevel gear	25	AM-RTP-7P-TC25	gasket
10	AM-RTP-7P-TC10	Taperd roller bearing	26	AM-RTP-7P-TC26	Nut
11	AM-RTP-7P-TC11	Cover paper pad	27	AM-RTP-7P-TC27	Key
12	AM-RTP-7P-TC12	End cover	28	AM-RTP-7P-TC28	Vice shaft
13	AM-RTP-7P-TC13	Gasket	29	AM-RTP-7P-TC29	Double countershaft double gear
14	AM-RTP-7P-TC14	Spring washer	30	AM-RTP-7P-TC30	Ball bearing
15	AM-RTP-7P-TC15	Bolt	31	AM-RTP-7P-TC31	Plain washer
16	AM-RTP-7P-TC16	Umbrella gear shaft	32	AM-RTP-7P-TC32	Lip seals

SL NO	PART NO	DESCRIPTION	SL NO	PART NO	DESCRIPTION
33	AM-RTP-7P-TC33	Ring for hole	49	AM-RTP-7P-TC49	Reverse shift fork shaft
34	AM-RTP-7P-TC34	Oil Seal	50	AM-RTP-7P-TC50	Reverse shifting fork
35	AM-RTP-7P-TC35	Protective cover	51	AM-RTP-7P-TC51	Hexagon Bolt
36	AM-RTP-7P-TC36	Bolt	52	AM-RTP-7P-TC52	Double cable seat
37	AM-RTP-7P-TC37	Hexagon head bolts-full thread	53	AM-RTP-7P-TC53	Hex nut
38	AM-RTP-7P-TC38	Washer	54	AM-RTP-7P-TC54	The clutch guy cable seat
39	AM-RTP-7P-TC39	round pin	55	AM-RTP-7P-TC55	Clutch fork shaft
40	AM-RTP-7P-TC40	O-ring	56	AM-RTP-7P-TC56	Pin shaft
41	AM-RTP-7P-TC41	Reverse shaft	57	AM-RTP-7P-TC57	Split pins
42	AM-RTP-7P-TC42	Reverse push plate	58	AM-RTP-7P-TC58	Clutch fork
43	AM-RTP-7P-TC43	Reverse double gear	59	AM-RTP-7P-TC59	Circlip For Shaft
44	AM-RTP-7P-TC44	Reverse gear spring seat	60	AM-RTP-7P-TC60	Gearbox
45	AM-RTP-7P-TC45	Reverse gear spring	61	AM-RTP-7P-TC61	Driving gear
46	AM-RTP-7P-TC46	Reverse limit cover	62	AM-RTP-7P-TC62	Steel ball
47	AM-RTP-7P-TC47	Hex nut	63	AM-RTP-7P-TC63	spring
48	AM-RTP-7P-TC48	O-rings	64	AM-RTP-7P-TC64	Main shaft



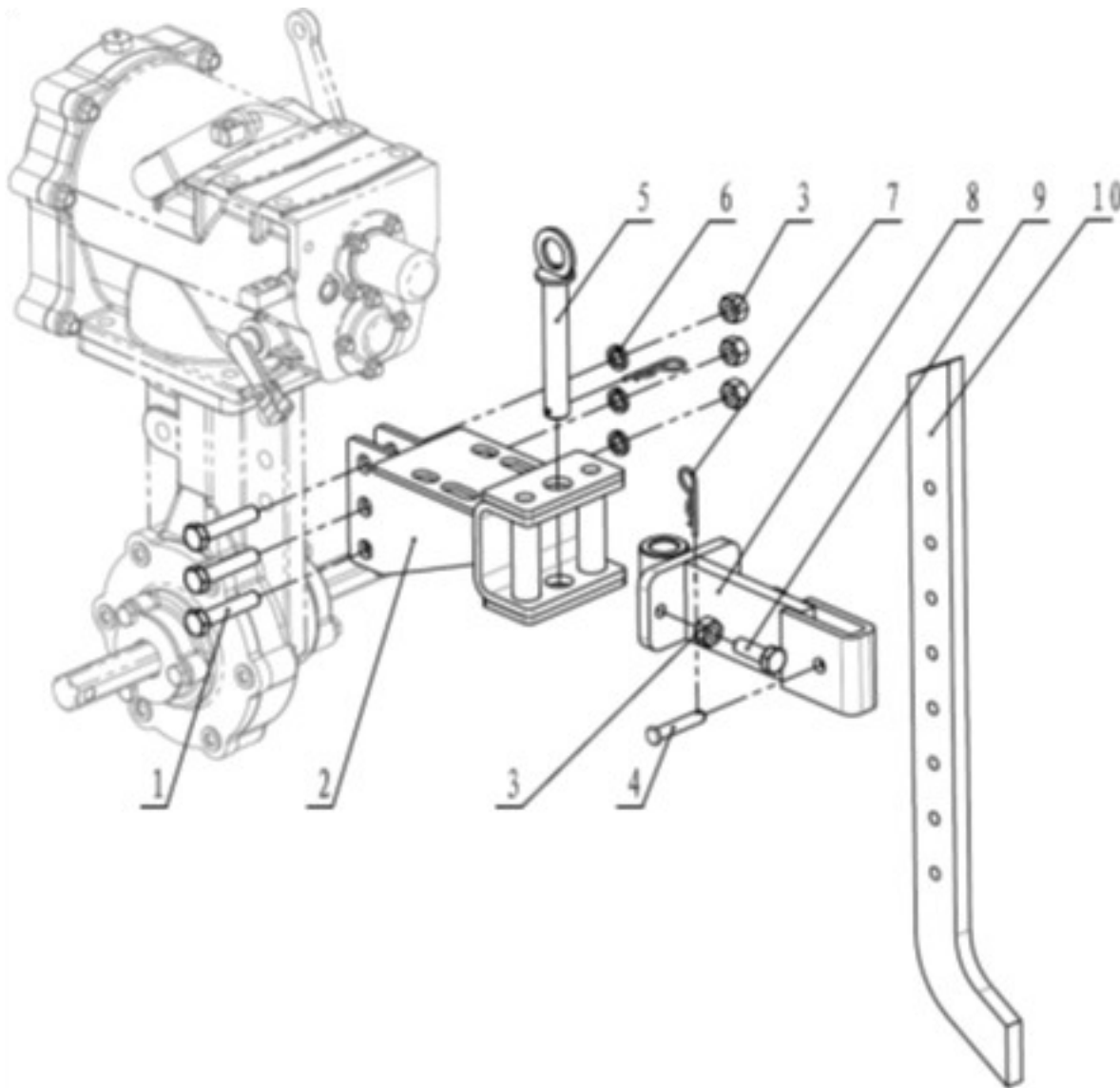
SL NO	PART NO	DESCRIPTION	SL NO	PART NO	DESCRIPTION
65	AM-RTP-7P-TC65	Ring	81	AM-RTP-7P-TC81	prevailing torque type hexagon nuts
66	AM-RTP-7P-TC66	clutch Core comp	82	AM-RTP-7P-TC82	Shift arm
67	AM-RTP-7P-TC67	Clutch washer	83	AM-RTP-7P-TC83	bushing
68	AM-RTP-7P-TC68	bearing	84	AM-RTP-7P-TC84	Split pins
69	AM-RTP-7P-TC69	Bolt	85	AM-RTP-7P-TC85	Shift fork shaft
70	AM-RTP-7P-TC70	Serrated lock washers external teeth	86	AM-RTP-7P-TC86	Selector fork
71	AM-RTP-7P-TC71	Plain washer	87	AM-RTP-7P-TC87	Dipstick
72	AM-RTP-7P-TC72	Pressure release bolt	88	AM-RTP-7P-TC88	Washer
73	AM-RTP-7P-TC73	Flange gasket			
74	AM-RTP-7P-TC74	Flange			
75	AM-RTP-7P-TC75	screw			
76	AM-RTP-7P-TC76	bearing			
77	AM-RTP-7P-TC77	Clutch housing			
78	AM-RTP-7P-TC78	Aiproof gasket,gear box			
79	AM-RTP-7P-TC79	Hex bolt with flange			
80	AM-RTP-7P-TC80	Locatin pin			

# Handle Control Parts - TD



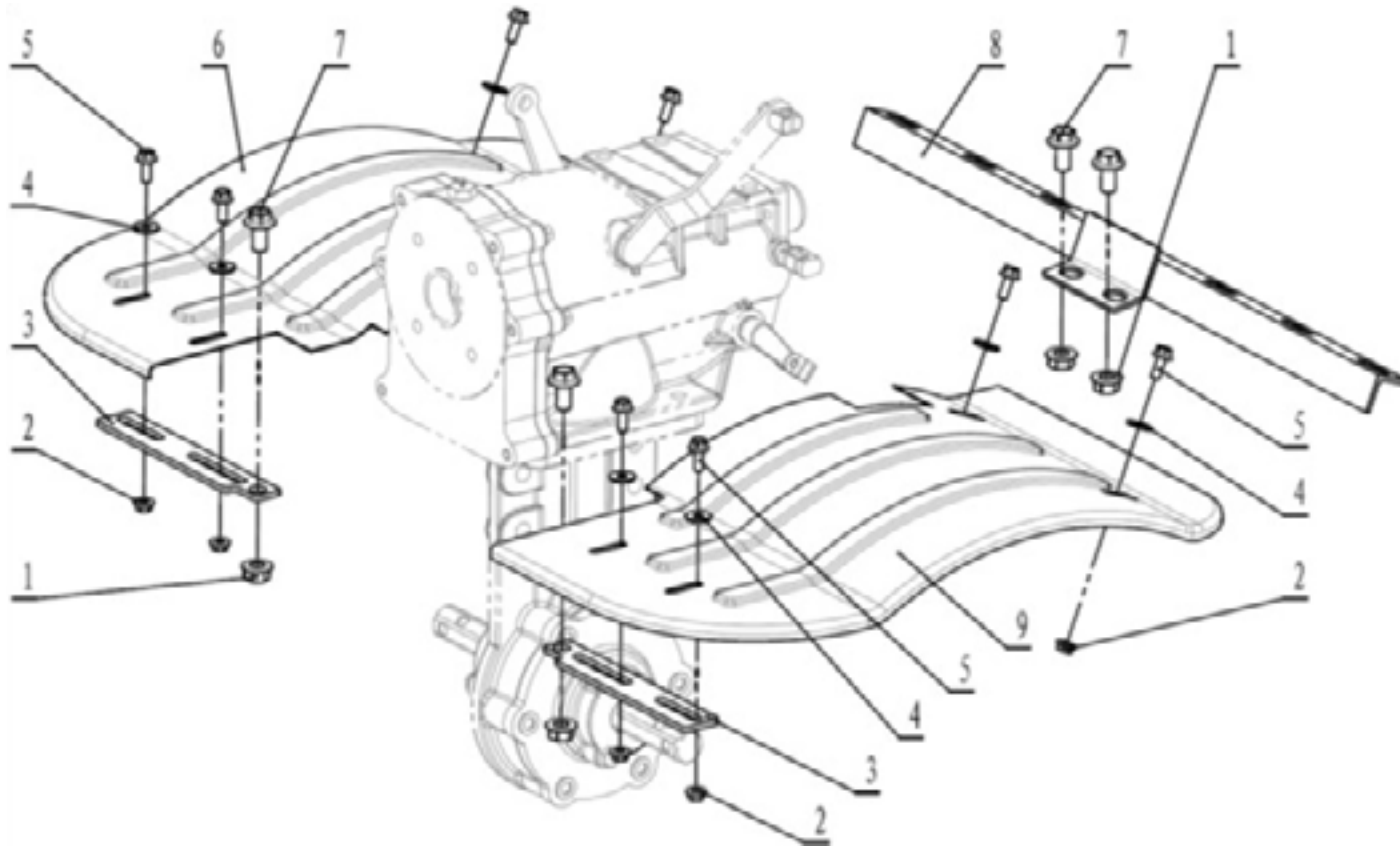
SL NO	PART NO	DESCRIPTION	SL NO	PART NO	DESCRIPTION
1	AM-RTP-7P-TD01	Hexagon-head bolt	17	AM-RTP-7P-TD17	Splitpin
2	AM-RTP-7P-TD02	Non-metal insert hex lock nut	18	AM-RTP-7P-TD18	Pin
3	AM-RTP-7P-TD03	shift rod	19	AM-RTP-7P-TD19	Pin
4	AM-RTP-7P-TD04	Hexagon-head bolt	20	AM-RTP-7P-TD20	Hexagonal flange face bolt
5	AM-RTP-7P-TD05	Throttle Cable	21	AM-RTP-7P-TD21	Hexagonal flange face nut
6	AM-RTP-7P-TD06	Reverse Gear Cable	22	AM-RTP-7P-TD22	Handle bar
7	AM-RTP-7P-TD07	Clip	23	AM-RTP-7P-TD23	Clutch cable
8	AM-RTP-7P-TD08	Grip	24	AM-RTP-7P-TD24	Lock handle
9	AM-RTP-7P-TD09	shift handle	25	AM-RTP-7P-TD25	Handle seat
10	AM-RTP-7P-TD10	circlip	26	AM-RTP-7P-TD26	Hexagonal flange face bolt small series
11	AM-RTP-7P-TD11	Clip B	27	AM-RTP-7P-TD27	Spring washer
12	AM-RTP-7P-TD12	Tool box	28	AM-RTP-7P-TD28	Nut
13	AM-RTP-7P-TD13	Throttle switch			
14	AM-RTP-7P-TD14	Grip			
15	AM-RTP-7P-TD15	Shut Down Switch Comp			
16	AM-RTP-7P-TD16	Reverse Gear/Clutch Grip			

## Dragging assy, connection frame and resistance rod parts - TE



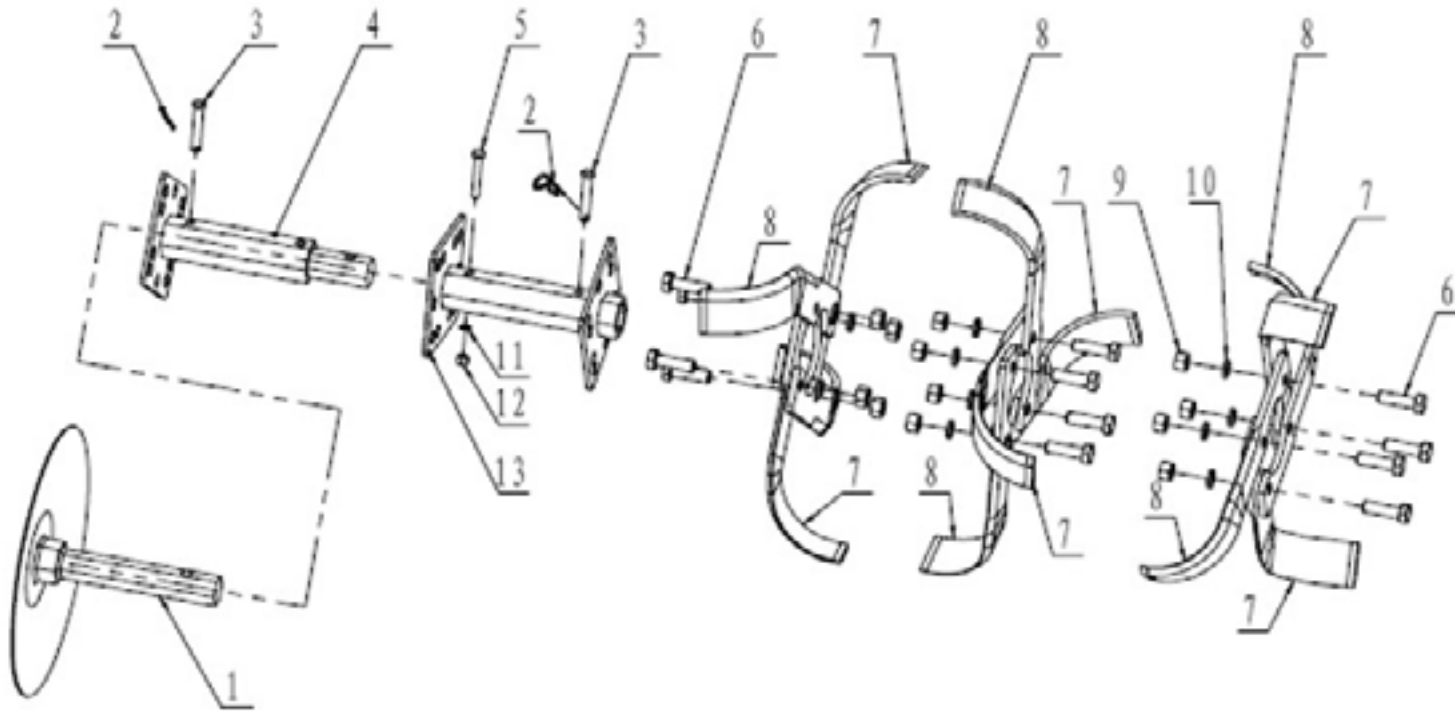
SL NO	PART NO	DESCRIPTION
1	AM-RTP-7P-TE01	Hexagon head bolts- full thread
2	AM-RTP-7P-TE02	Dragging assy
3	AM-RTP-7P-TE03	Hex nut
4	AM-RTP-7P-TE04	Pin
5	AM-RTP-7P-TE05	Pin with ring
6	AM-RTP-7P-TE06	spring washer
7	AM-RTP-7P-TE07	Clip B
8	AM-RTP-7P-TE08	Connection frame
9	AM-RTP-7P-TE09	Hexagon head bolts- full thread
10	AM-RTP-7P-TE10	Resistance rod

## Fender parts - TF



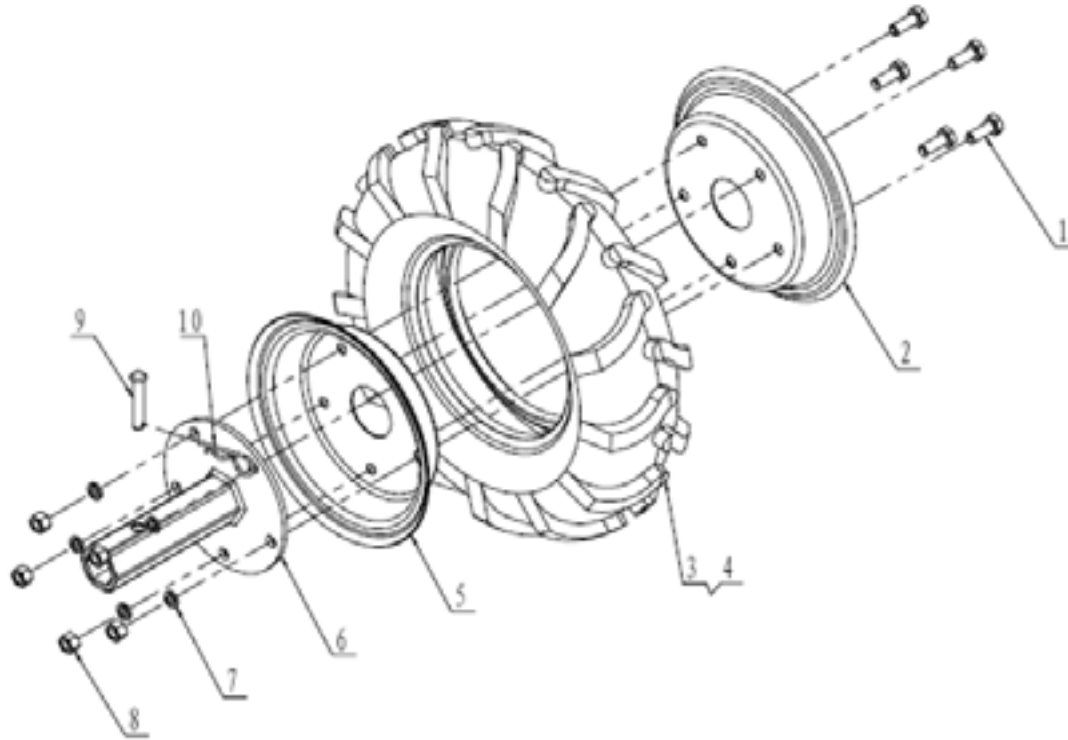
SL NO	PART NO	DESCRIPTION	SL NO	PART NO	DESCRIPTION
1	AM-RTP-7P-TF01	Hex nut with flange	6	AM-RTP-7P-TF06	Fender R
2	AM-RTP-7P-TF02	Hex nut with flange	7	AM-RTP-7P-TF07	Hexagonal flange face bolt
3	AM-RTP-7P-TF03	Fender front frame	8	AM-RTP-7P-TF08	Fender rear frame
4	AM-RTP-7P-TF04	Big washer	9	AM-RTP-7P-TF09	Fender L
5	AM-RTP-7P-TF05	Hexagonal flange face bolt			

## Rotary blades parts - TG



SL NO	PART NO	DESCRIPTION	SL NO	PART NO	DESCRIPTION
1	AM-RTP-7P-TG01	Discs (Optional)	8	AM-RTP-7P-TG08	Blade L
2	AM-RTP-7P-TG02	Ciclip Clip B	9	AM-RTP-7P-TG09	Hex nut
3	AM-RTP-7P-TG03	Pin	10	AM-RTP-7P-TG10	spring washer
4	AM-RTP-7P-TG04	Counter tube	11	AM-RTP-7P-TG11	spring washer
5	AM-RTP-7P-TG05	Hexagon head bolts-full thread	12	AM-RTP-7P-TG12	Hex nut
6	AM-RTP-7P-TG06	Hexagon head bolts-full thread	13	AM-RTP-7P-TG13	Main tube
7	AM-RTP-7P-TG07	Blade R			






## Wheels parts - TH



SL NO	PART NO	DESCRIPTION	SL NO	PART NO	DESCRIPTION
1	AM-RTP-7P-TH01	Hexagon head bolts-full thread	6	AM-RTP-7P-TH06	spring washer
2	AM-RTP-7P-TH02	Spoke outer side	7	AM-RTP-7P-TH07	Wheel axle/black
3	AM-RTP-7P-TH03	Outer rubber wheel	8	AM-RTP-7P-TH08	Hex nut
4	AM-RTP-7P-TH04	Inner tube	9	AM-RTP-7P-TH09	Pin
5	AM-RTP-7P-TH05	Spoke inner side	10	AM-RTP-7P-TH10	Clip B






# WARRANTY CARD

## CUSTOMER COPY

DATE _____	DATE OF DELIVERY _____	DEALERS OFFICIAL SEAL	DEALERS SIGN _____
PURCHASERS NAME & ADDRESS _____ _____	 CUSTOMER SIGN		
PRODUCT NAME	PRODUCT SERIAL NO.	INVOICE/DN NO.	
			






I/Will accept the terms and conditions of warranty as in the warranty card

## DEALERS COPY

DATE _____	DATE OF DELIVERY _____	DEALERS OFFICIAL SEAL	DEALERS SIGN _____
PURCHASERS NAME & ADDRESS _____ _____	 CUSTOMER SIGN		
PRODUCT NAME	PRODUCT SERIAL NO.	INVOICE/DN NO.	
			

I/Will accept the terms and conditions of warranty as in the warranty card

## COMPANY COPY

DATE _____	DATE OF DELIVERY _____	DEALERS OFFICIAL SEAL	DEALERS SIGN _____
PURCHASERS NAME & ADDRESS _____ _____	 CUSTOMER SIGN		
PRODUCT NAME	PRODUCT SERIAL NO.	INVOICE/DN NO.	
			

I/Will accept the terms and conditions of warranty as in the warranty card



1. LIMITED WARRANTY PERIOD : For a period of six months from the date of Sale / delivery of the product which ever is earlier. 2. LIMITED WARRANTY OBLIGATION : Replacement of defective part(s) by authorized dealer are free of charges. If found defective by reasons of defective material / poor workmanship, parts will be replaced and there will be no value re-imbusement. 3. TERMS & CONDITIONS : a. Claims under warranty will be accepted on submission of Warranty Card duly filled and stamped by authorized dealer together with the original purchase document. : b. Shipping / transportation / Incidental charges incurred in replacing defective parts under warranty shall be borne by the purchaser

WARRANTY null & void if

- (i) Lack of maintenance, (ii) Incorrect use of the machine or tampering, (iii) Use of non-genuine spare parts, (iv) Usage of acids, solvents, or any flammable materials, (v) Non-usage of filter water / clear water / soft water & using water above 40°C temperature, (vi) While using the pressure washers to draw water which is contaminated with dust & solvents (eg. paint thinners, gasoline, oil, etc.), (vii) Repair done by unauthorized service people, (viii) Those parts subject to wear & tear due to normal operations and plastic parts, rubber items etc, (ix) Loose connections, faulty electrical fixtures & fluctuations in power supply.
- 4. Should any failure occur during or after the warranty period, customer does not have the right to interrupt payment / price discount.
- 5. Incidental or consequential damages like inconvenience commercial loss, loss of tie, mental agony etc.
- 6. Loss of any nature due to operation or non-operation is not covered under warranty.
- 7. All free service are at Dealer's service point only.
- 8. Warranty ceases if service is not done periodically.
- 9. The attached card should be completed and returned to Ratnagiri Impex Pvt. Ltd. for registration immediately after sale / delivery.
- 10. The warranty is void unless you register the warranty card with Ratnagiri Impex Pvt. Ltd.
- 11. The decision of Ratnagiri Impex Pvt. Ltd., in settling the warranty is final in all respects.
- 12. All disputes are subject to Bangalore Courts Jurisdiction

1. LIMITED WARRANTY PERIOD : For a period of six months from the date of Sale / delivery of the product which ever is earlier. 2. LIMITED WARRANTY OBLIGATION : Replacement of defective part(s) by authorized dealer are free of charges. If found defective by reasons of defective material / poor workmanship, parts will be replaced and there will be no value re-imbusement. 3. TERMS & CONDITIONS : a. Claims under warranty will be accepted on submission of Warranty Card duly filled and stamped by authorized dealer together with the original purchase document. : b. Shipping / transportation / Incidental charges incurred in replacing defective parts under warranty shall be borne by the purchaser.

WARRANTY null & void if

- (i) Lack of maintenance, (ii) Incorrect use of the machine or tampering, (iii) Use of non-genuine spare parts, (iv) Usage of acids, solvents, or any flammable materials, (v) Non-usage of filter water / clear water / soft water & using water above 40°C temperature, (vi) While using the pressure washers to draw water which is contaminated with dust & solvents (eg. paint thinners, gasoline, oil, etc.), (vii) Repair done by unauthorized service people, (viii) Those parts subject to wear & tear due to normal operations and plastic parts, rubber items etc, (ix) Loose connections, faulty electrical fixtures & fluctuations in power supply.
- 4. Should any failure occur during or after the warranty period, customer does not have the right to interrupt payment / price discount.
- 5. Incidental or consequential damages like inconvenience commercial loss, loss of tie, mental agony etc.
- 6. Loss of any nature due to operation or non-operation is not covered under warranty.
- 7. All free service are at Dealer's service point only.
- 8. Warranty ceases if service is not done periodically.
- 9. The attached card should be completed and returned to Ratnagiri Impex Pvt. Ltd. for registration immediately after sale / delivery.
- 10. The warranty is void unless you register the warranty card with Ratnagiri Impex Pvt. Ltd.
- 11. The decision of Ratnagiri Impex Pvt. Ltd., in settling the warranty is final in all respects.
- 12. All disputes are subject to Bangalore Courts Jurisdiction

1. LIMITED WARRANTY PERIOD : For a period of six months from the date of Sale / delivery of the product which ever is earlier. 2. LIMITED WARRANTY OBLIGATION : Replacement of defective part(s) by authorized dealer are free of charges. If found defective by reasons of defective material / poor workmanship, parts will be replaced and there will be no value re-imbusement. 3. TERMS & CONDITIONS : a. Claims under warranty will be accepted on submission of Warranty Card duly filled and stamped by authorized dealer together with the original purchase document. : b. Shipping / transportation / Incidental charges incurred in replacing defective parts under warranty shall be borne by the purchaser.

WARRANTY null & void if

- (i) Lack of maintenance, (ii) Incorrect use of the machine or tampering, (iii) Use of non-genuine spare parts, (iv) Usage of acids, solvents, or any flammable materials, (v) Non-usage of filter water / clear water / soft water & using water above 40°C temperature, (vi) While using the pressure washers to draw water which is contaminated with dust & solvents (eg. paint thinners, gasoline, oil, etc.), (vii) Repair done by unauthorized service people, (viii) Those parts subject to wear & tear due to normal operations and plastic parts, rubber items etc, (ix) Loose connections, faulty electrical fixtures & fluctuations in power supply.
- 4. Should any failure occur during or after the warranty period, customer does not have the right to interrupt payment / price discount.
- 5. Incidental or consequential damages like inconvenience commercial loss, loss of tie, mental agony etc.
- 6. Loss of any nature due to operation or non-operation is not covered under warranty.
- 7. All free service are at Dealer's service point only.
- 8. Warranty ceases if service is not done periodically.
- 9. The attached card should be completed and returned to Ratnagiri Impex Pvt. Ltd. for registration immediately after sale / delivery.
- 10. The warranty is void unless you register the warranty card with Ratnagiri Impex Pvt. Ltd.
- 11. The decision of Ratnagiri Impex Pvt. Ltd., in settling the warranty is final in all respects.
- 12. All disputes are subject to Bangalore Courts Jurisdiction



**FREE SERVICE COUPON (30DAYS/30HRS. WHICHEVER IS EARLIER)**

MODEL

SERIAL NUMBER

PDI DATE

SERVICE NO.

PURCHASE BILL NO.

DATE

DEALERS OFFICE SEAL

- 1. Check and test the fuel mixture
- 3. Check , clean and adjust the spark plug
- 5. Check and sparken the cutting tools
- 7. Start and check the noise, vibration, loosen etc..

OPERATIONS

- 2. check and clean the air filter
- 4. Check and adjust the carburetor tuning
- 6. Product familirisation on usage
- 8. Routine maintenance and shortage.

**FREE SERVICE COUPON (30DAYS/30HRS. WHICHEVER IS EARLIER)**

MODEL

SERIAL NUMBER

PDI DATE

SERVICE NO.

PURCHASE BILL NO.

DATE

DEALERS OFFICE SEAL

- 1. Check and test the fuel mixture
- 3. Check , clean and adjust the spark plug
- 5. Check and sparken the cutting tools
- 7. Start and check the noise, vibration, loosen etc..

OPERATIONS

- 2. check and clean the air filter
- 4. Check and adjust the carburetor tuning
- 6. Product familirisation on usage
- 8. Routine maintenance and shortage.

**FREE SERVICE COUPON (30DAYS/30HRS. WHICHEVER IS EARLIER)**

MODEL

SERIAL NUMBER

PDI DATE

SERVICE NO.

PURCHASE BILL NO.

DATE

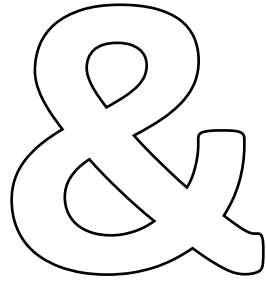
DEALERS OFFICE SEAL

- 1. Check and test the fuel mixture
- 3. Check , clean and adjust the spark plug
- 5. Check and sparken the cutting tools
- 7. Start and check the noise, vibration, loosen etc..

OPERATIONS

- 2. check and clean the air filter
- 4. Check and adjust the carburetor tuning
- 6. Product familirisation on usage
- 8. Routine maintenance and shortage.

# DOS



# DONTs

1. Always read the instruction manual supplied along with the equipments and understand the correct installation and operating procedures before attempting to use the equipments.
2. It is important to use the personal protection equipments such as head helmet with visor, ear defenders, goggles, safety gloves, cut resistant shoes, trousers and jackets while operating potentially dangerous machines
3. Avoid untrained persons using the equipments. Children must not be allowed to handle these equipments
4. Always use genuine spares and accessories in repairs and usage to derive maximum life of the equipments.
5. Always keep the equipments in good working condition to minimize loss of output as well as to reduce the pollution and save the environment
6. Do not use the machine within range of persons unless they wear protective clothing
7. Do not operate the machine when fatigued or under the influence of alcohol or drugs
8. When the machine is running, please maintain a constant water supply. Without water circulation will damage the sealing rings of the machine.
9. For more query kindly contact for our Service Center/Dealer/ franchise

# NO. 1 CHOICE OF FARMERS SINCE 1999



Marketed by.  
**ratnagiri  
impex**  
BRINGING YOU THE FUTURE... NOW

**RATNAGIRI IMPEX PVT., LTD.,**

Annapurna House, #1 / 1G, 7th Cross, New  
Guddadahalli

Mysore Road, Bangalore - 560 026

Missed Call : 7393 938 938

Email: [ask@agrimart.in](mailto:ask@agrimart.in)