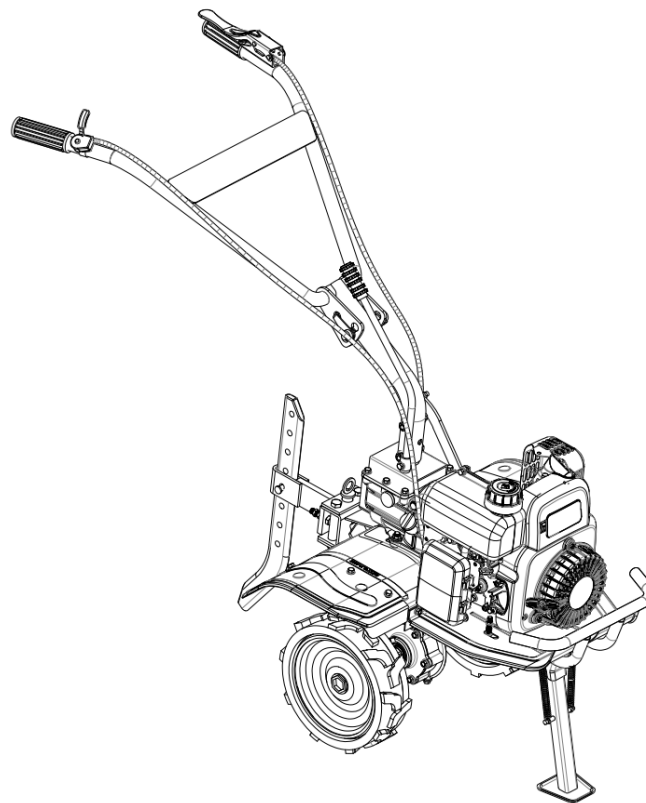
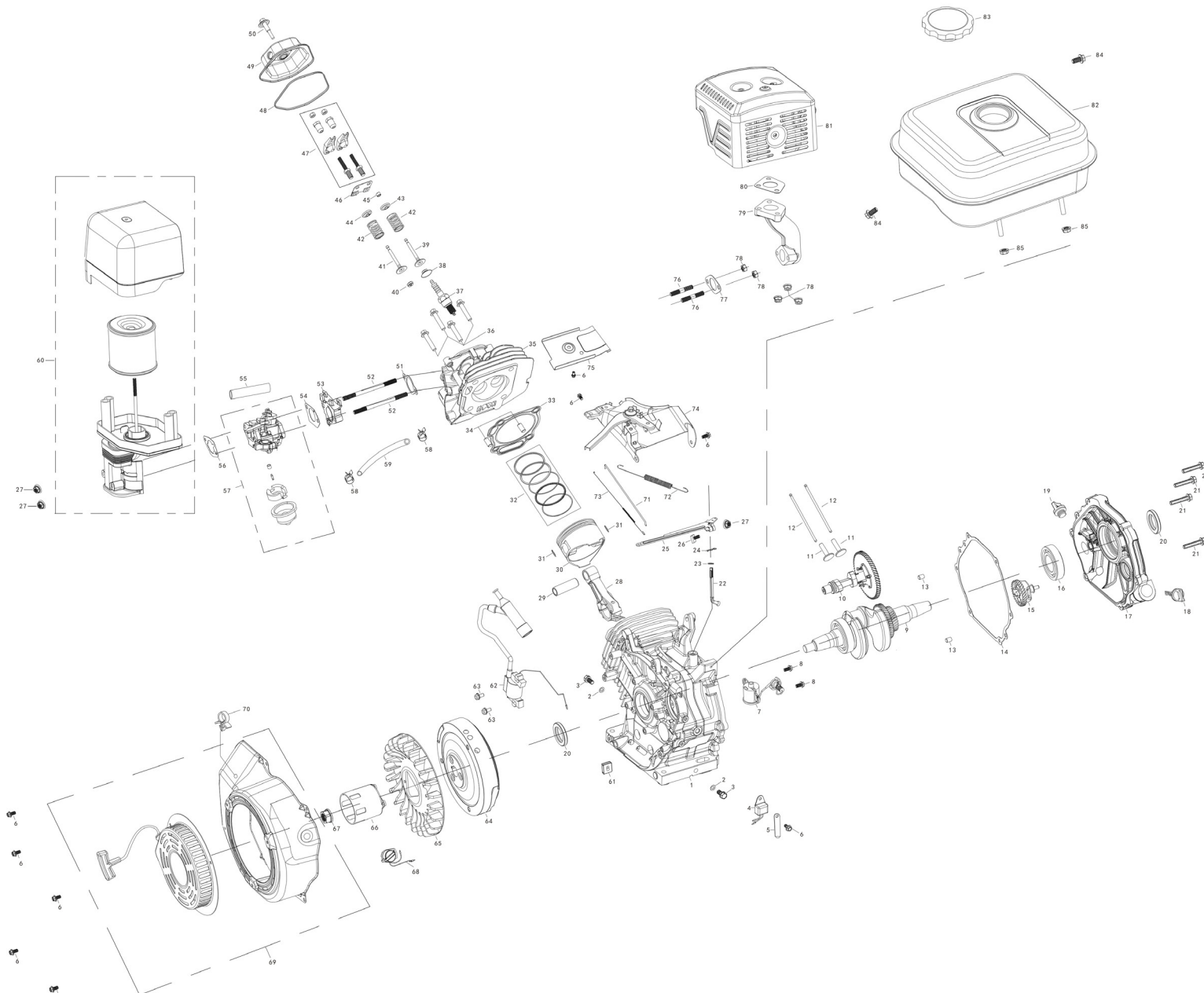


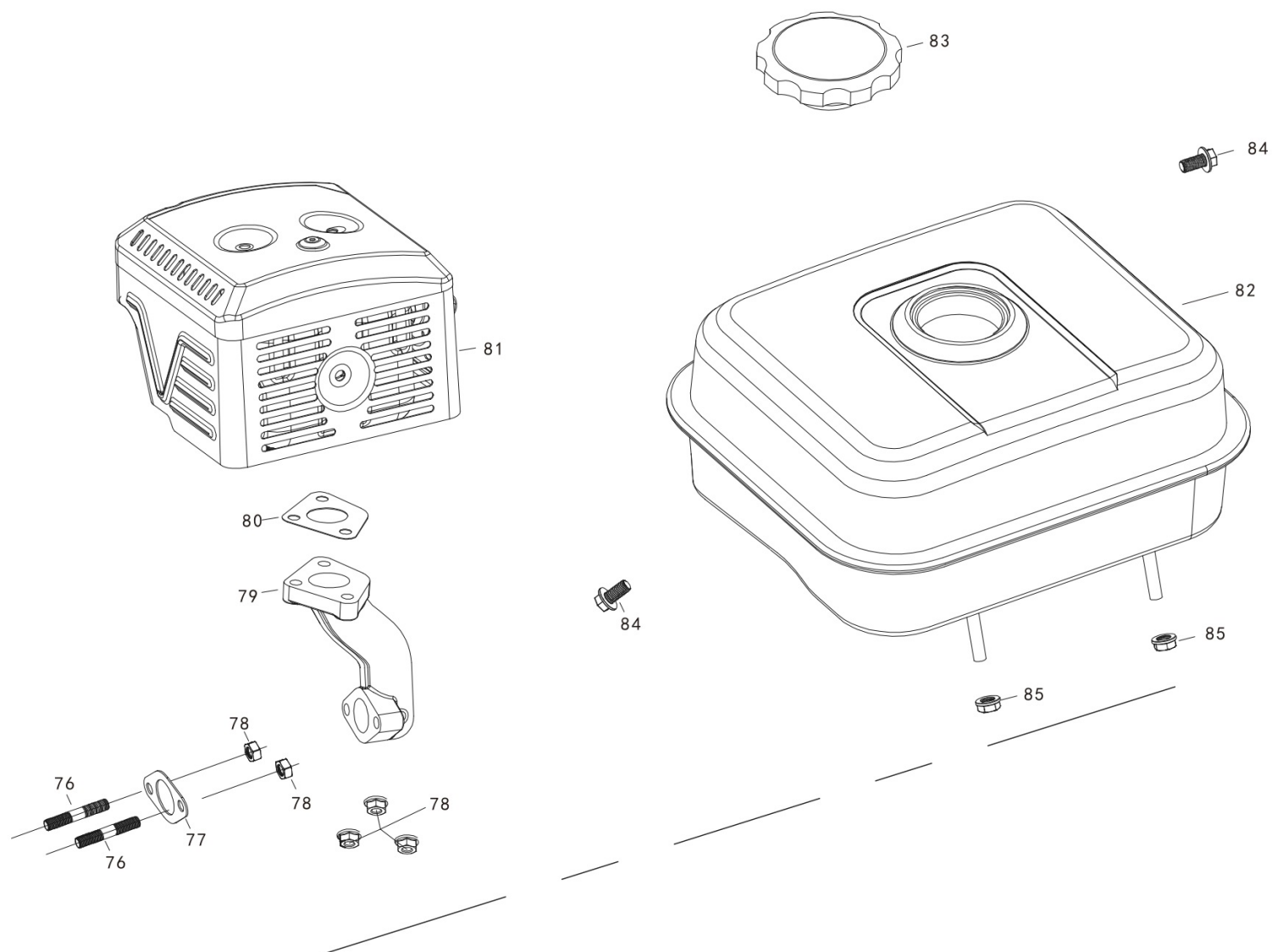
INTERCULTIVATOR/POWER WEEDER AM-RTP-9P-MAX- CHAMPION NEW AM-177FP ENGINE PART DIAGRAM



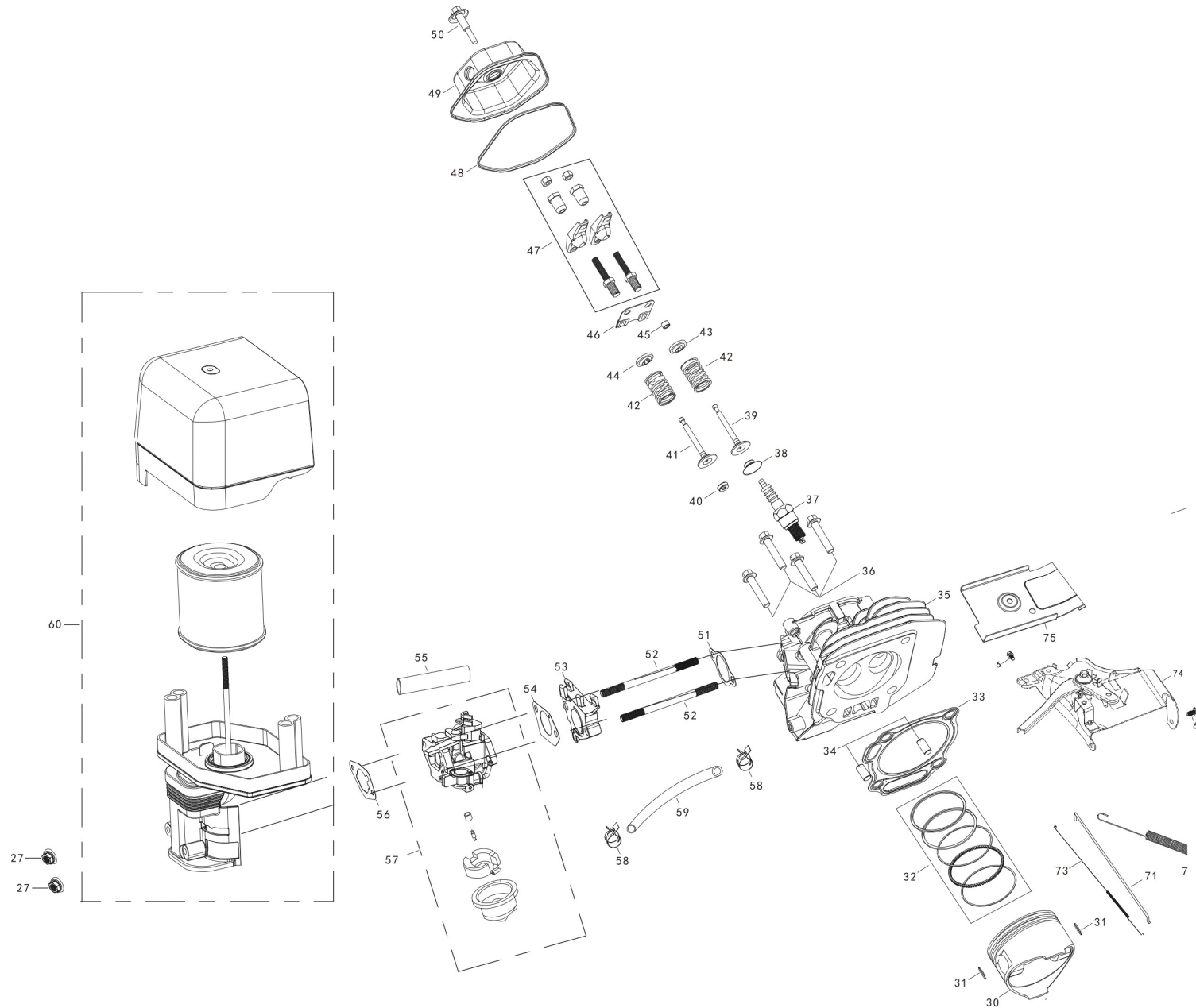
ENGINE DIAGRAM & PART LIST OF AM-RTP-9P-MAX INTERCULTIVATOR/POWER WEEDER



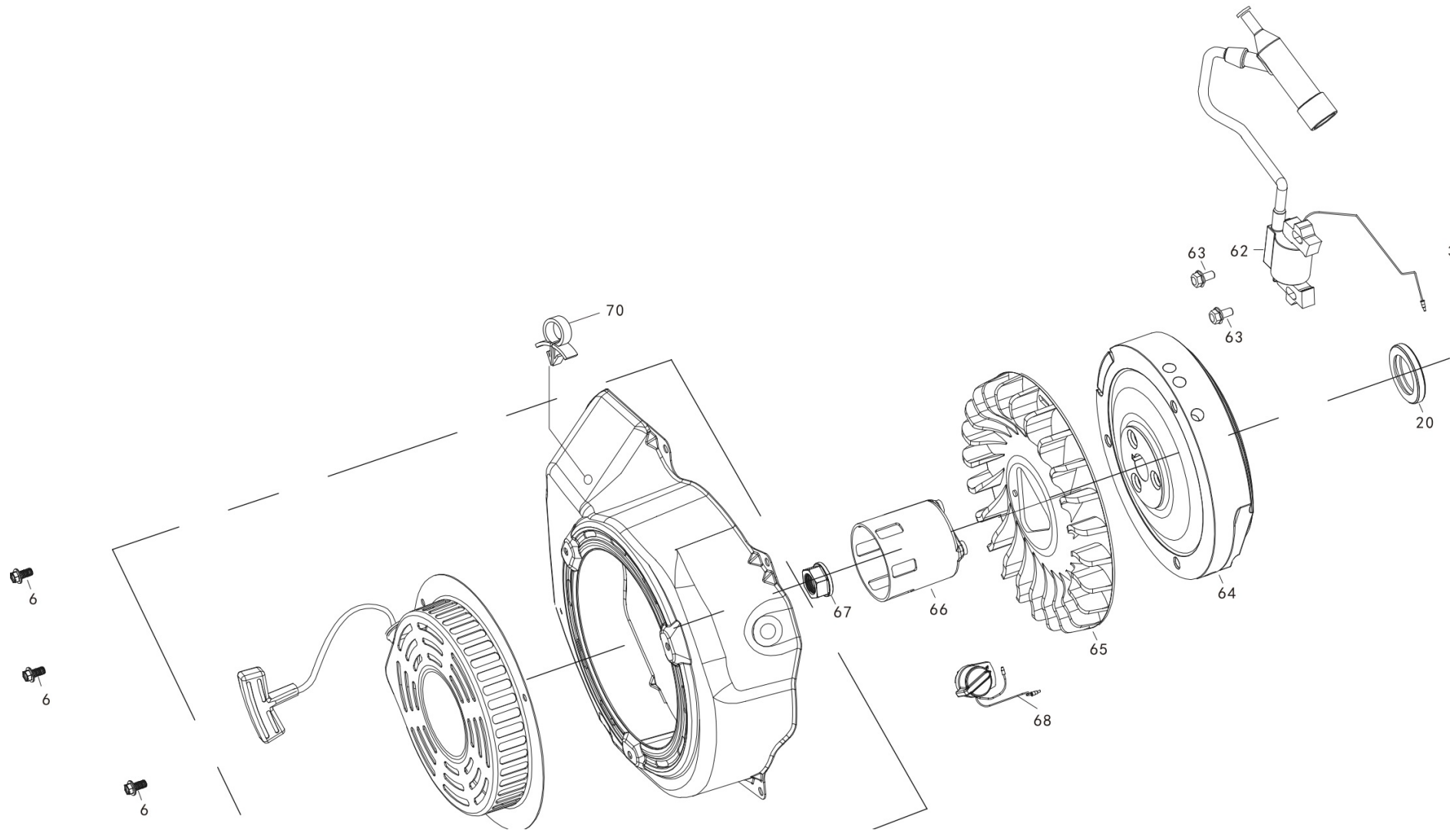
ENGINE DIAGRAM & PART LIST OF AM-RTP-9P-MAX INTERCULTIVATOR/POWER WEEDER



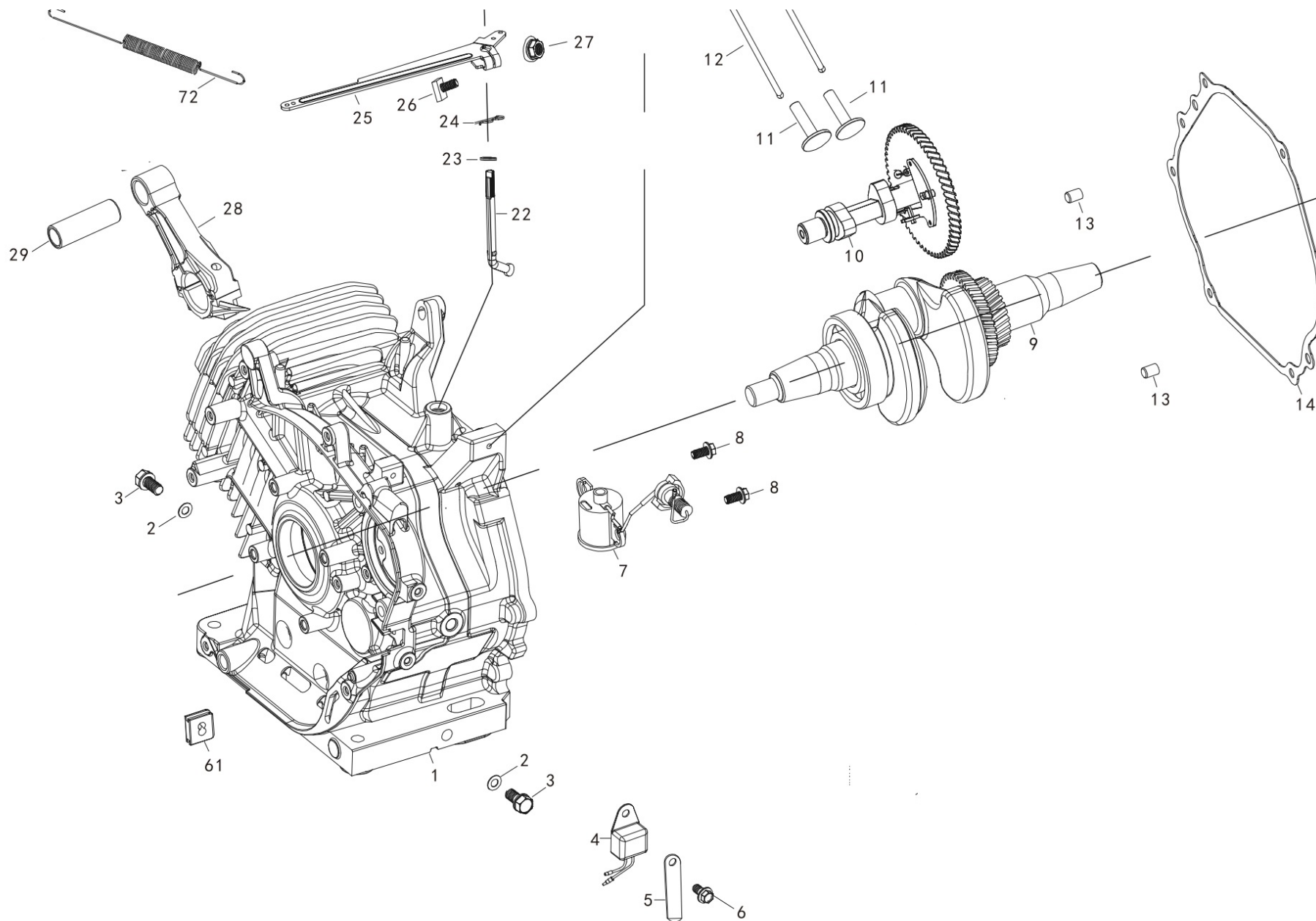
ENGINE DIAGRAM & PART LIST OF AM-RTP-9P-MAX INTERCULTIVATOR/POWER WEEDER



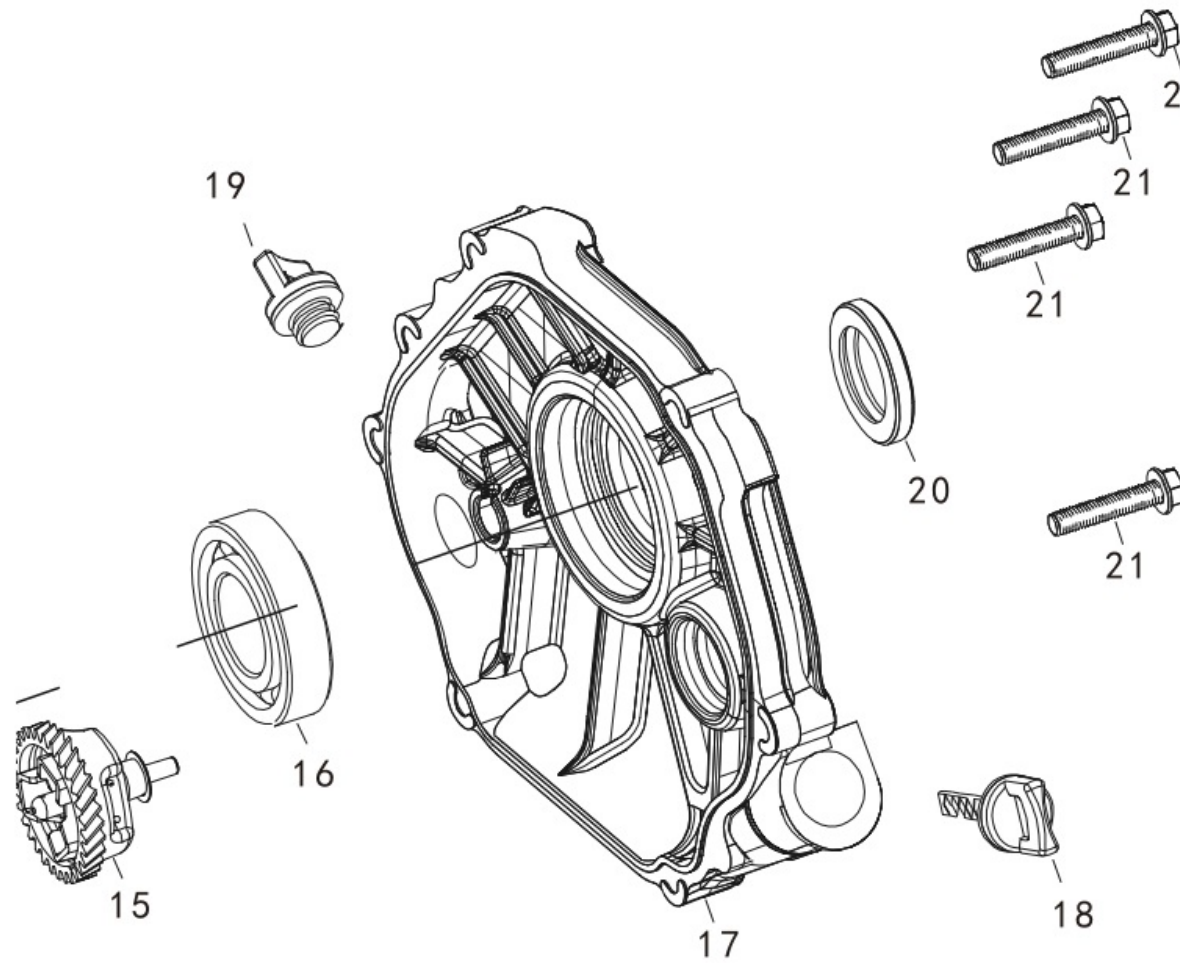
ENGINE DIAGRAM & PART LIST OF AM-RTP-9P-MAX INTERCULTIVATOR/POWER WEEDER



ENGINE DIAGRAM & PART LIST OF AM-RTP-9P-MAX INTERCULTIVATOR/POWER WEEDER



ENGINE DIAGRAM & PART LIST OF AM-RTP-9P-MAX INTERCULTIVATOR/POWER WEEDER



ENGINE DIAGRAM & PART LIST OF AM-RTP-9P-MAX INTERCULTIVATOR/POWER WEEDER

SL NO	PART NO	DESCRIPTION	SL NO	PART NO	DESCRIPTION
1	AM-177FPA-01	Crankcase	17	AM-177FPA-17	Crankcase Cover Assy
2	AM-177FPA-02	Washer	18	AM-177FPA-18	Dipstick
3	AM-177FPA-03	Drain Bolt	19	AM-177FPA-19	Oil Plug
4	AM-177FPA-04	Oil Alert Unit	20	AM-177FPA-20	Oil Seal
5	AM-177FPA-05	Metal Line Card	21	AM-177FPA-21	Bolt
6	AM-177FPA-06	Bolt	22	AM-177FPA-22	Swinging Rod
7	AM-177FPA-07	Oil Sensor	23	AM-177FPA-23	Washer
8	AM-177FPA-08	Bolt	24	AM-177FPA-24	Split Clin
9	AM-177FPA-09	Crankshaft	25	AM-177FPA-25	Governor Arm
10	AM-177FPA-10	Camshaft Assy	26	AM-177FPA-26	Square Head Bolt
11	AM-177FPA-11	Valve Lifter	27	AM-177FPA-27	Nut
12	AM-177FPA-12	Push Rod	28	AM-177FPA-28	Connecting Rod Assy
13	AM-177FPA-13	Set Pin	29	AM-177FPA-29	Pin Piston
14	AM-177FPA-14	Gasket, Crankcase	30	AM-177FPA-30	Piston
15	AM-177FPA-15	Governor Gear	31	AM-177FPA-31	Piston Clip
16	AM-177FPA-16	Radial Ball Bearing	32	AM-177FPA-32	Piston Ring Assy

ENGINE DIAGRAM & PART LIST OF AM-RTP-9P-MAX INTERCULTIVATOR/POWER WEEDER

SL NO	PART NO	DESCRIPTION	SL NO	PART NO	DESCRIPTION
33	AM-177FPA-33	Gasket,Cylinder Head	49	AM-177FPA-49	Cylinder Head Cover
34	AM-177FPA-34	Set Pin	50	AM-177FPA-50	Nonstandard Bolt
35	AM-177FPA-35	Cylinder Head Comp	51	AM-177FPA-51	Inlet Gasket
36	AM-177FPA-36	Bolt	52	AM-177FPA-52	Double Armed Bolt
37	AM-177FPA-37	Spark Plug	53	AM-177FPA-53	Carburetor Insulation
38	AM-177FPA-38	Exhaust Valve Spring Retain	54	AM-177FPA-54	Carbretor Gasket
39	AM-177FPA-39	Exhaust Valve	55	AM-177FPA-55	Airclean Pipe
40	AM-177FPA-40	Inlet Valve Oil Seal	56	AM-177FPA-56	Gasket Air Cleaner
41	AM-177FPA-41	Intake Valve	57	AM-177FPA-57	Carburetor
42	AM-177FPA-42	Valve Spring	58	AM-177FPA-58	Pipe Clip
43	AM-177FPA-43	Exhaust Valve Spring Seat	59	AM-177FPA-59	Fuel Pipe
44	AM-177FPA-44	Intake Valve Spring Seat	60	AM-177FPA-60	Air Cleaner
45	AM-177FPA-45	Exhaust Valve Cap	61	AM-177FPA-61	Rubber Of Clip
46	AM-177FPA-46	Push Rod Guide Plate	62	AM-177FPA-62	Ignition Coil Assy
47	AM-177FPA-47	Rocker Arm Assy	63	AM-177FPA-63	Bolt
48	AM-177FPA-48	Gasket Cylinder Head Cover	64	AM-177FPA-64	Fly Wheel

ENGINE DIAGRAM & PART LIST OF AM-RTP-9P-MAX INTERCULTIVATOR/POWER WEEDER

SL NO	PART NO	DESCRIPTION	SL NO	PART NO	DESCRIPTION
65	AM-177FPA-65	Fly Wheel Fan	76	AM-177FPA-76	Double Armed Bolt
66	AM-177FPA-66	Starter Pulley	77	AM-177FPA-77	Gasket Muffler Pipe
67	AM-177FPA-67	Nut	78	AM-177FPA-78	Metal Belt Disc Check Nut
68	AM-177FPA-68	Engine Stop Switch	79	AM-177FPA-79	Muffler Pipe
69	AM-177FPA-69	Kick Starter Assy	80	AM-177FPA-80	Gasket Muffler
70	AM-177FPA-70	Plastic Clip	81	AM-177FPA-81	Muffler
71	AM-177FPA-71	Pulling Rod	82	AM-177FPA-82	Fuel Tank
72	AM-177FPA-72	Governor Spring	83	AM-177FPA-83	Fuel Tank Cap
73	AM-177FPA-73	Throttle Return Spring	84	AM-177FPA-84	Bolt
74	AM-177FPA-74	Governor Stay	85	AM-177FPA-85	Nut
75	AM-177FPA-75	Lead Wind Cover			

INSPECTION & MAINTAINANCE

For safety use, make sure the machine is cleaned every three months. Before working, make sure to inspect the filter and the nozzle and ensure there is no impurity. After working, make sure there is no water in the pump and the hose.

If the machine needs to be repaired in the guarantee period, please return the machine to the shop. You need to provide the certificate of purchase on order to repair or get the substitute.

Before packing, the machine should be cleaned, then use closed packaging, packaging should be firm. Store the machine in dry place.

For transportation safety. The machine should comply with ISTA.

Do not dispose of electrical machines as unsorted municipal waste, use separate collection facilities.

If electrical machines are disposed of in landfills or dumps, hazardous substances can leak into the ground water and get into the food chain, damaging your health and well being.

When replacing old machines with new ones, the retailer is legally obligated to take back your old machine for disposals at least free of charge.

WARRANTY CARD

CUSTOMER COPY

DATE _____	DATE OF DELIVERY _____	DEALERS OFFICIAL SEAL _____	DEALERS SIGN _____
PURCHASERS NAME & ADDRESS _____ _____ _____	<div>CUSTOMER SIGN</div>	<div></div>	
PRODUCT NAME	PRODUCT SERIAL NO.	INVOICE/DN NO.	
<div></div>	<div></div>	<div></div>	
I/Will accept the terms and conditions of warranty as in the warranty card			

DEALERS COPY

DATE _____	DATE OF DELIVERY _____	DEALERS OFFICIAL SEAL _____	DEALERS SIGN _____
PURCHASERS NAME & ADDRESS _____ _____ _____	<div>CUSTOMER SIGN</div>	<div></div>	
PRODUCT NAME	PRODUCT SERIAL NO.	INVOICE/DN NO.	
<div></div>	<div></div>	<div></div>	
I/Will accept the terms and conditions of warranty as in the warranty card			

COMPANY COPY

DATE _____	DATE OF DELIVERY _____	DEALERS OFFICIAL SEAL _____	DEALERS SIGN _____
PURCHASERS NAME & ADDRESS _____ _____ _____	<div>CUSTOMER SIGN</div>	<div></div>	
PRODUCT NAME	PRODUCT SERIAL NO.	INVOICE/DN NO.	
<div></div>	<div></div>	<div></div>	
I/Will accept the terms and conditions of warranty as in the warranty card			

1. LIMITED WARRANTY PERIOD : For a period of six months from the date of Sale / delivery of the product which ever is earlier. 2. LIMITED WARRANTY OBLIGATION : Replacement of defective part(s) by authorized dealer are free of charges. If found defective by reasons of defective material / poor workmanship, parts will be replaced and there will be no value re-imbursement. 3. TERMS & CONDITIONS : a. Claims under warranty will be accepted on submission of Warranty Card duly filled and stamped by authorized dealer together with the original purchase document. : b. Shipping / transportation / Incidental charges incurred in replacing defective parts under warranty shall be borne by the purchaser

WARRANTY null & void if
(i) Lack of maintenance, (ii) Incorrect use of the machine or tampering, (iii) Use of non-genuine spare parts, (iv) Usage of acids, solvents, or any flammable materials, (v) Non-usage of filter water / clear water / soft water & using water above 40°C temperature, (vi) While using the pressure washers to draw water which is contaminated with dust & solvents (eg. paint thinners, gasoline, oil, etc.), (vii) Repair done by unauthorized service people, (viii) Those parts subject to wear & tear due to normal operations and plastic parts, rubber items etc, (ix) Loose connections, faulty electrical fixtures & fluctuations in power supply.
4. Should any failure occur during or after the warranty period, customer does not have the right to interrupt payment / price discount.
5. Incidental or consequential damages like inconvenience commercial loss, loss of tie, mental agony etc.
6. Loss of any nature due to operation or non-operation is not covered under warranty.
7. All free service are at Dealer's service point only.
8. Warranty ceases if service is not done periodically.
9. The attached card should be completed and returned to Ratnagiri Impex Pvt. Ltd. for registration immediately after sale / delivery.
10. The warranty is void unless you register the warranty card with Ratnagiri Impex Pvt. Ltd.
11. The decision of Ratnagiri Impex Pvt. Ltd., in settling the warranty is final in all respects.
12. All disputes are subject to Bangalore Courts Jurisdiction

1. LIMITED WARRANTY PERIOD : For a period of six months from the date of Sale / delivery of the product which ever is earlier. 2. LIMITED WARRANTY OBLIGATION : Replacement of defective part(s) by authorized dealer are free of charges. If found defective by reasons of defective material / poor workmanship, parts will be replaced and there will be no value re-imbursement. 3. TERMS & CONDITIONS : a. Claims under warranty will be accepted on submission of Warranty Card duly filled and stamped by authorized dealer together with the original purchase document. : b. Shipping / transportation / Incidental charges incurred in replacing defective parts under warranty shall be borne by the purchaser.
WARRANTY null & void if
(i) Lack of maintenance, (ii) Incorrect use of the machine or tampering, (iii) Use of non-genuine spare parts, (iv) Usage of acids, solvents, or any flammable materials, (v) Non-usage of filter water / clear water / soft water & using water above 40°C temperature, (vi) While using the pressure washers to draw water which is contaminated with dust & solvents (eg. paint thinners, gasoline, oil, etc.), (vii) Repair done by unauthorized service people, (viii) Those parts subject to wear & tear due to normal operations and plastic parts, rubber items etc, (ix) Loose connections, faulty electrical fixtures & fluctuations in power supply.
4. Should any failure occur during or after the warranty period, customer does not have the right to interrupt payment / price discount.
5. Incidental or consequential damages like inconvenience commercial loss, loss of tie, mental agony etc.
6. Loss of any nature due to operation or non-operation is not covered under warranty.
7. All free service are at Dealer's service point only.
8. Warranty ceases if service is not done periodically.
9. The attached card should be completed and returned to Ratnagiri Impex Pvt. Ltd. for registration immediately after sale / delivery.
10. The warranty is void unless you register the warranty card with Ratnagiri Impex Pvt. Ltd.
11. The decision of Ratnagiri Impex Pvt. Ltd., in settling the warranty is final in all respects.
12. All disputes are subject to Bangalore Courts Jurisdiction

1. LIMITED WARRANTY PERIOD : For a period of six months from the date of Sale / delivery of the product which ever is earlier. 2. LIMITED WARRANTY OBLIGATION : Replacement of defective part(s) by authorized dealer are free of charges. If found defective by reasons of defective material / poor workmanship, parts will be replaced and there will be no value re-imbursement. 3. TERMS & CONDITIONS : a. Claims under warranty will be accepted on submission of Warranty Card duly filled and stamped by authorized dealer together with the original purchase document. : b. Shipping / transportation / Incidental charges incurred in replacing defective parts under warranty shall be borne by the purchaser.
WARRANTY null & void if
(i) Lack of maintenance, (ii) Incorrect use of the machine or tampering, (iii) Use of non-genuine spare parts, (iv) Usage of acids, solvents, or any flammable materials, (v) Non-usage of filter water / clear water / soft water & using water above 40°C temperature, (vi) While using the pressure washers to draw water which is contaminated with dust & solvents (eg. paint thinners, gasoline, oil, etc.), (vii) Repair done by unauthorized service people, (viii) Those parts subject to wear & tear due to normal operations and plastic parts, rubber items etc, (ix) Loose connections, faulty electrical fixtures & fluctuations in power supply.
4. Should any failure occur during or after the warranty period, customer does not have the right to interrupt payment / price discount.
5. Incidental or consequential damages like inconvenience commercial loss, loss of tie, mental agony etc.
6. Loss of any nature due to operation or non-operation is not covered under warranty.
7. All free service are at Dealer's service point only.
8. Warranty ceases if service is not done periodically.
9. The attached card should be completed and returned to Ratnagiri Impex Pvt. Ltd. for registration immediately after sale / delivery.
10. The warranty is void unless you register the warranty card with Ratnagiri Impex Pvt. Ltd.
11. The decision of Ratnagiri Impex Pvt. Ltd., in settling the warranty is final in all respects.
12. All disputes are subject to Bangalore Courts Jurisdiction

FREE SERVICE COUPON (30DAYS/30HRS. WHICHEVER IS EARLIER)

MODEL	<input type="text"/>	SERIAL NUMBER	<input type="text"/>
PDI DATE	SERVICE NO.	PURCHASE BILL NO.	DATE
<input type="text"/>	<input type="text"/>	<input type="text"/>	<input type="text"/>
DEALERS OFFICE SEAL	OPERATIONS		
<input type="text"/>	<div> 1. Check and test the fuel mixture 3. Check , clean and adjust the spark plug 5. Check and sparken the cutting tools 7. Start and check the noise, vibration, loosen etc.. </div> <div> 2. check and clean the air filter 4. Check and adjust the carburetor tuning 6. Product familiarisation on usage 8. Routine maintenance and shortage. </div>		

FREE SERVICE COUPON (30DAYS/30HRS. WHICHEVER IS EARLIER)

MODEL	<input type="text"/>	SERIAL NUMBER	<input type="text"/>
PDI DATE	SERVICE NO.	PURCHASE BILL NO.	DATE
<input type="text"/>	<input type="text"/>	<input type="text"/>	<input type="text"/>
DEALERS OFFICE SEAL	OPERATIONS		
<input type="text"/>	<div> 1. Check and test the fuel mixture 3. Check , clean and adjust the spark plug 5. Check and sparken the cutting tools 7. Start and check the noise, vibration, loosen etc.. </div> <div> 2. check and clean the air filter 4. Check and adjust the carburetor tuning 6. Product familiarisation on usage 8. Routine maintenance and shortage. </div>		

FREE SERVICE COUPON (30DAYS/30HRS. WHICHEVER IS EARLIER)

MODEL	<input type="text"/>	SERIAL NUMBER	<input type="text"/>
PDI DATE	SERVICE NO.	PURCHASE BILL NO.	DATE
<input type="text"/>	<input type="text"/>	<input type="text"/>	<input type="text"/>
DEALERS OFFICE SEAL	OPERATIONS		
<input type="text"/>	<div> 1. Check and test the fuel mixture 3. Check , clean and adjust the spark plug 5. Check and sparken the cutting tools 7. Start and check the noise, vibration, loosen etc.. </div> <div> 2. check and clean the air filter 4. Check and adjust the carburetor tuning 6. Product familiarisation on usage 8. Routine maintenance and shortage. </div>		

DOS & DONTs

1. Always read the instruction manual supplied along with the equipments and understand the correct installation and operating procedures before attempting to use the equipments.
2. It is important to use the personal protection equipments such as head helmet with visor, ear defenders, goggles, safety gloves, cut resistant shoes, trousers and jackets while operating potentially dangerous machines
3. Avoid untrained persons using the equipments. Children must not be allowed to handle these equipments
4. Always use genuine spares and accessories in repairs and usage to derive maximum life of the equipments.
5. Always keep the equipments in good working condition to minimize loss of output as well as to reduce the pollution and save the environment
6. Do not use the machine within range of persons unless they wear protective clothing
7. Do not operate the machine when fatigued or under the influence of alcohol or drugs
8. When the machine is running, please maintain a constant water supply. Without water circulation will damage the sealing rings of the machine.
9. For more query kindly contact for our Service Center/Dealer/ franchise

Agrimate Army For Pest Control

ANY WHERE - ANY TIME - ANY CROP



Marketed by:
**ratnagiri
impex**
BRINGING YOU THE FUTURE... NOW

IMPORTED & MARKETING BY,
RATNAGIRI IMPEX PVT., LTD.,

Annapurna House, #1 / 1G, 7th Cross, New
Guddadahalli Mysore Road, Bangalore - 560 026

Missed Call : 7393 938 938 Email: ask@agrimart.in