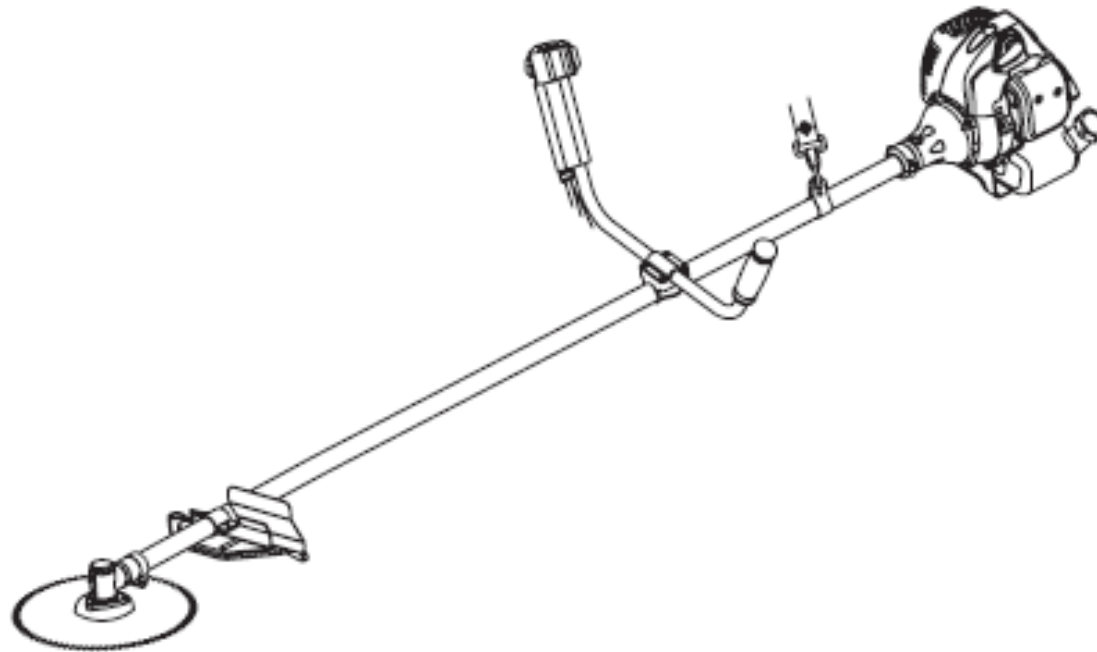


**AGRIMATE TEA PRUNER  
AMTP-245-2S**



## INTRODUCTION

Dear Sir/ Madam,

Thank you for choosing Agrimate product. You are the proud owner of high technology & durable machine. Trust that our Franchisee/Dealer installed the product & installed the product and explained you about the usage & service instructions. Please visit our autorised dealer for your future requirement of our other equipments, genuine spares, accessories and services. Service coupons are attached with this manual and you can avail free service to keep your machine fit always to use on demand.

About Ratnagiri,

We import and market of high quality of agriculture wide range of equipments which we are selling through our authorised franchisee or dealer network. We are in this field from past years service the farmer. community. For further details, Please visit our website [www.agrimart.in](http://www.agrimart.in). & Give a missed call to 7393 938 938.

## GRAPHIC WARNINGS

Because a trimmer/cutter is a high-speed, fast cutting power tool, special safety precaution must be observed to reduce the risk of personal injury. Read this manual carefully. Be familiar with the controls and the proper use of the unit. Know how to shut it off, and how to unhook a harnessed unit quickly.



This graphic accompanied by the words warning and danger calls attention to an act or a condition which can lead to serious injury.



Wear safety boots



Wear safety gloves



READ & UNDERSTAND Operator's manual and safety manual.



Always wear eye and ear protection.



Wear head protection where there is a risk of falling objects



Always turn off engine and make sure the cutting tool has stopped before cleaning, removing or adjusting blade



Keep bystanders away at least 15m/50feet



WARNING! Never modify a trimmer or cutter in any way. improper use of any trimmer can cause serious or fatal personal injury.



WARNING! Do not touch hard wood; stone; steel.

## SAFETY RULES & PRECAUTIONS

Proper safety precautions must be observed. Like all power equipment this unit must be handled carefully. Do not expose yourself or others to danger. Follow these general rules. Do not permit others to use this machine unless they are thoroughly responsible and have read, and understand the machine manual and are trained in its operation.

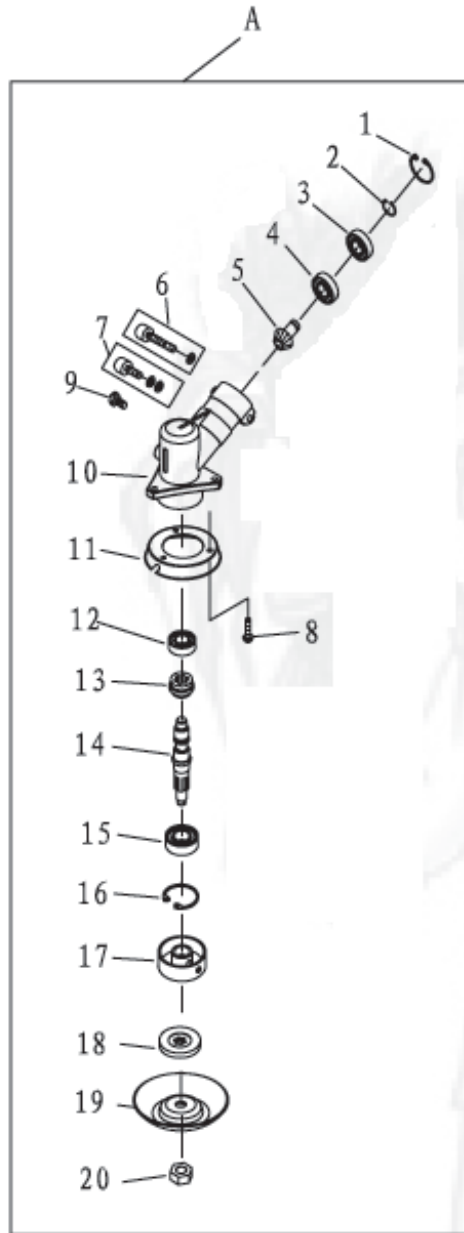
- Always wear safety goggles for eye protection. Dress properly , do not wear loose clothing or jewelry that could become caught in moving parts of the unit. Safe, sturdy, nonskid footwear should always be worn. Long hair should be tied back. It is recommended that legs and feet be covered to protect from flying debris during operation.
- Inspect the entire machine for loose parts (nuts, bolts, screws, etc.) and any damage. Repair or replace as necessary before using the machine.
- DO NOT USE any attachment with this power head other than the ones recommended by our company. Serious injury to the operator or bystanders could result as well as damage to the machine.
- Keep the handles away from oil and fuel.
- Always use proper handles and shoulder strap when cutting.
- Do not smoke while mixing fuel or filling tank.
- Do not mix fuel in an enclosed room or near open flames. Assure adequate ventilation. Always mix and store the fuel in a properly marked container that is approved by local codes and ordinances for such usage.
- Never remove the fuel tank cap while the engine is running.
- Never start or run the engine inside a closed room or building. Fumes from the exhaust contain dangerous carbon monoxide.
- Never attempt to make engine adjustments while the unit is running and strapped to the operator. Always make engine adjustments with the unit resting on a flat, clear surface.
- Do not use the unit if it is damaged or poorly adjusted. Never remove the machine's guard. Serious injury to the operator or bystanders could result as well as damage to the machine.
- Inspect the area to be cut and remove all debris that could become entangled in the nylon cutting head. Also remove any objects that the unit may throw during cutting.
- Keep children away. Onlookers should be kept at a safe distance from the work area, at least 15 METER. (50 FEET)
- Never leave the machine unattended.
- Do not use this unit for any job other than those for which it is intended as described in this manual.
- Do not overreach. Keep proper footing and balance at all times. Do not run the unit while standing on a ladder or on any other unstable footing location.
- Keep hands and feet clear of the nylon cutting head while unit is in use.

## FOLLOW INSTRUCTION FOR CHANGING ACCESSORIES.

- Do not store in a closed area where fuel vapors can reach an open flame from hot water heaters, heaters, furnaces, etc. Store in a locked, well ventilated area only.
- ensure safe and proper performance of your product. These part are available from your dealer. The use of any other accessories or attachments may cause a potential hazard or injury to the user, damage to the machine and void this warranty.
- Clean the machine completely, especially, the fuel tank, its surroundings, and the air cleaner.
- When refueling, be sure to stop the engine and confirm that it is cooled down. Never refuel when the engine is running or hot. When gasoline spills, be sure to wipe it up completely and properly dispose of those materials before starting the engine.
- Stay clear of other workers or bystanders by at least 15 meters /50 feet.
- When ever approaching an operator of the machine, carefully call his attention and confirm that the operator stops the engine. Be careful not to startle or distract the operator which can cause an unsafe situation.
- Never touch the nylon cutting head when ever the engine is running. If it is necessary to adjust the protector or nylon cutting head, be sure to stop the engine and confirm that the nylon cutting head has stopped running.
- The engine should be turned off when the machine is moved between work areas.
- Be careful not to hit the nylon cutting head against stones, or the ground. Unreasonable rough operation will shorten the life of the machine as well as create an unsafe environment for yourself and those around you.
- Pay attention to loosening and overheating of parts. If there is any abnormality of the machine, stop operation immediately and check the machine carefully. If necessary, have the machine serviced by a authorized dealer. Never continue to operate a machine which may be malfunctioning.
- In start-up or during operation of the engine, never touch hot parts such as the muffler, the high voltage wire or the spark plug.
- After the engine has stopped, the muffler is still hot. Never place the machine in any places where there are flammable materials (dry grass, etc.), combustible gasses or combustible liquids.
- Pay special attention to operation in the rain or just after the rain as the ground may be slippery.
- If you slip or fall to the ground or into a hole, release the throttle lever immediately.
- Be careful not to drop the machine or hit it against obstacles. • Before proceeding to adjust or repair the machine, be sure to stop the engine and detach the spark plug cap from the spark plug.
- When the machine is placed in storage for a long time, drain fuel from the fuel tank and carburetor, clean the parts, move the machine to a safe place and confirm that the engine is cooled down.
- Make periodic inspections to assure safe and efficient operation. For a thorough inspection of your machine, please contact a dealer.
- Keep the machine away from fire or sparks.
- It is believed that a condition called Raynaud's phenomenon, which affects the fmgers of certain individuals may be brought about by exposure to vibration and cold. Exposure to vibration and cold may cause tingling and burning sensations followed by loss of color and numbness in the fingers. The following precautions are strongly recommended because the minimum exposure which might trigger the ailment is unknown. Keep your body warm, especially the head, neck, feet, ankles, hands and wrists. Maintain good blood circulation by performing vigorous arm exercises during frequent work breaks and also by not smoking.

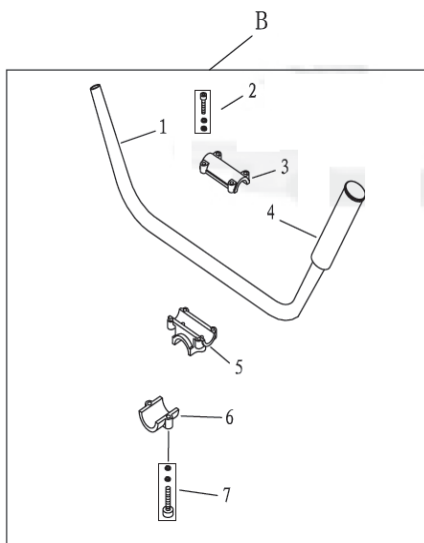
# TRANSMISSION DIAGRAM & PART LIST OF TEA PRUNER AMTP-252-2S

## GEAR CASE ASSY - A



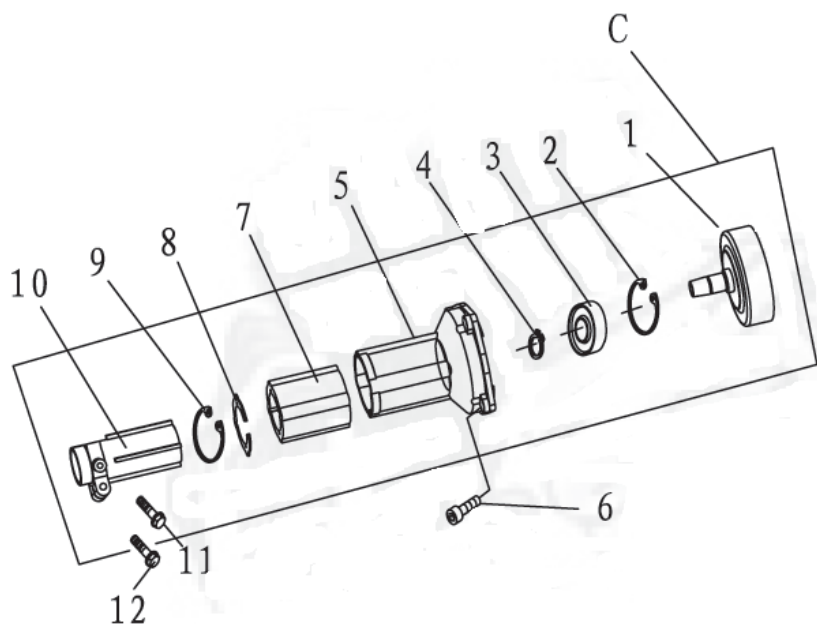
SL NO	PART NO	DESCRIPTION
A	A AMTP-245-TA	Gear Case Ass' y
1	AMTP-245-TA01	Stop Ring
2	AMTP-245-TA02	Stop Ring
3	AMTP-245-TA03	Bearing
4	AMTP-245-TA04	Bearing
5	AMTP-245-TA05	Pinion
6	AMTP-245-TA06	Screw
7	AMTP-245-TA07	Screw
8	AMTP-245-TA08	Screw
9	AMTP-245-TA09	Bolt
10	AMTP-245-TA10	Gear Case
11	AMTP-245-TA11	Safety Guard
12	AMTP-245-TA12	Bearing
13	AMTP-245-TA13	Gear
14	AMTP-245-TA14	Gear Shaft
15	AMTP-245-TA15	Bearing
16	AMTP-245-TA16	Stop Ring
17	AMTP-245-TA17	Holder A
18	AMTP-245-TA18	Holder B
19	AMTP-245-TA19	Bolt Cover
20	AMTP-245-TA20	Left Nut

# TRANSMISSION DIAGRAM & PART LIST OF TEA PRUNER AMTP-245-2S



SL NO	PART NO	DESCRIPTION
B	AMTP-245-TB	
1	AMTP-245-TB01	Handle
2	AMTP-245-TB02	Bolt
3	AMTP-245-TB03	Cap, Upper
4	AMTP-245-TB04	Grip Left
5	AMTP-245-TB05	Bracket
6	AMTP-245-TB06	Cap, Lower
7	AMTP-245-TB07	Screw

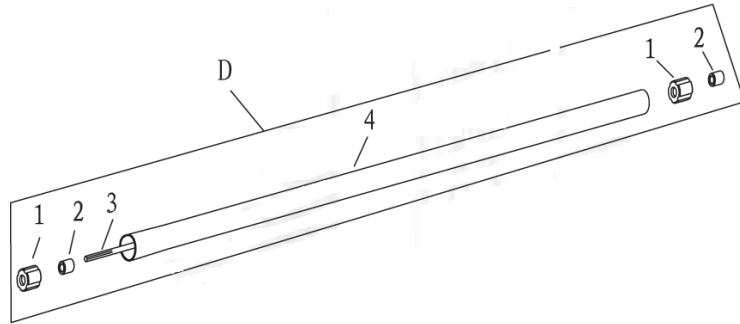
## CLUTCH COMPONENT - C



SL NO	PART NO	DESCRIPTION
C	AMTP-245-TC	Clutch Comp.
1	AMTP-245-TC01	Clutch Drum Comp.
2	AMTP-245-TC02	Stop Ring
3	AMTP-245-TC03	Bearing
4	AMTP-245-TC04	Stop Ring
5	AMTP-245-TC05	Clutch Case
6	AMTP-245-TC06	Bolt
7	AMTP-245-TC07	Rubber
8	AMTP-245-TC08	Washer
9	AMTP-245-TC09	Stop Ring
10	AMTP-245-TC10	Linker
11	AMTP-245-TC11	Bolt
12	AMTP-245-TC12	Bolt

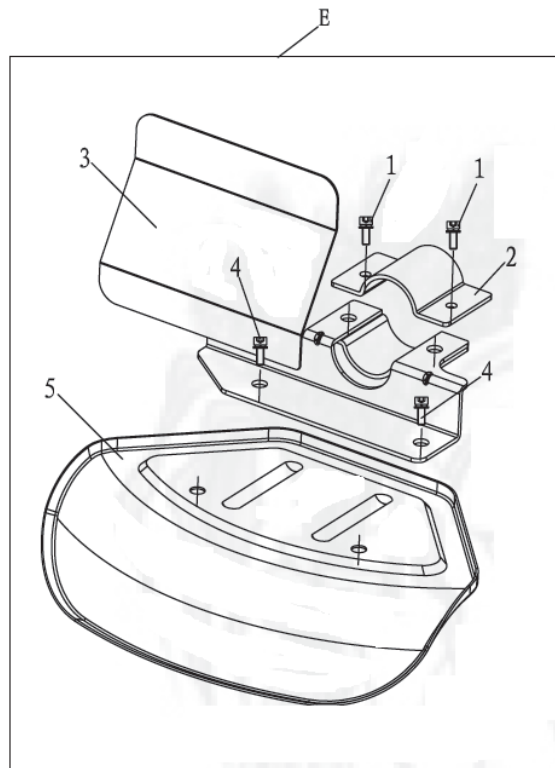
# TRANSMISSION DIAGRAM & PART LIST OF TEA PRUNER AMTP-245-2S

## PIPE COMPONENT - D



SL NO	PART NO	DESCRIPTION
D	AMTP-245-TD	Pipe Comp.
1	AMTP-245-TD01	Rubber Cover
2	AMTP-245-TD02	Oil-bearing
3	AMTP-245-TD03	Drive Shaft
4	AMTP-245-TD04	Pipe

## SAFETY GUARD COMPONENT - E

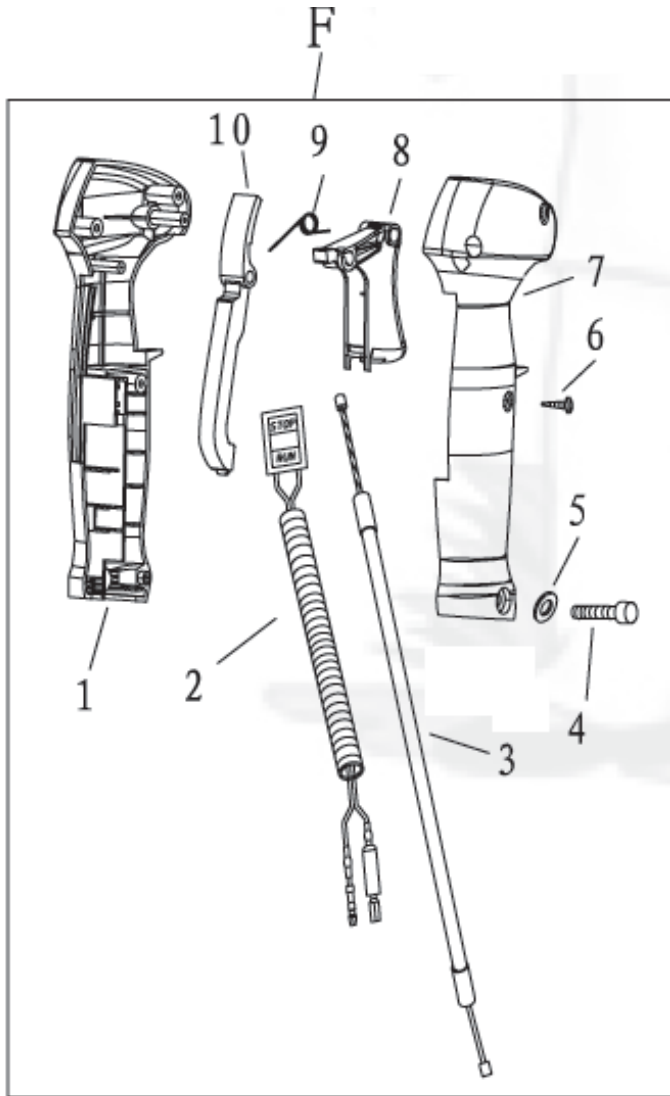


SL NO	PART NO	DESCRIPTION
E	AMTP-245-TE	Safety Guard Comp.
1	AMTP-245-TE01	Screw
2	AMTP-245-TE02	Safety Guard Press Plank
3	AMTP-245-TE03	Safety Guard Bracket
4	AMTP-245-TE04	Screw
5	AMTP-245-TE05	Safety Guard



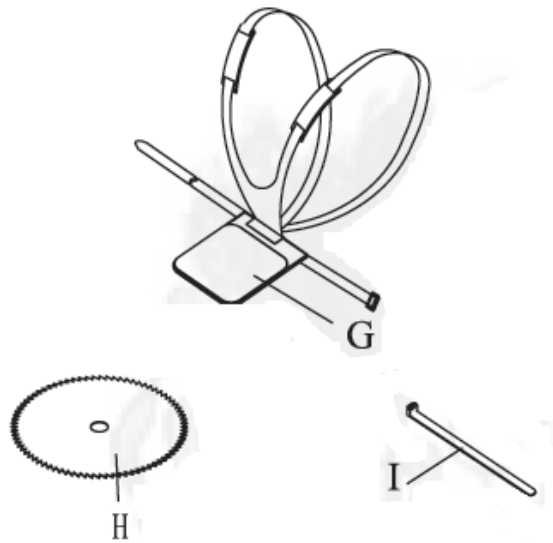
# TRANSMISSION DIAGRAM & PART LIST OF TEA PRUNER AMTP-245-2S

## LEVER ASSY - F



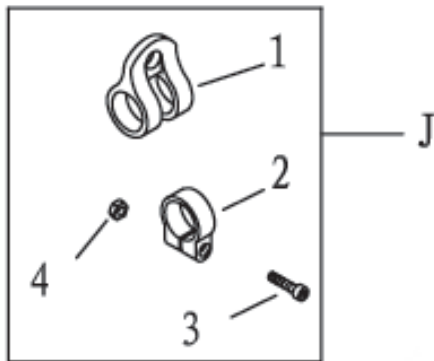
SL NO	PART NO	DESCRIPTION
F	AMTP-245-TF	Lever Ass'y
1	AMTP-245-TF01	Box, Left
2	AMTP-245-TF02	Stop Button Comp.
3	AMTP-245-TF03	Cable Comp.
4	AMTP-245-TF04	BOLT
5	AMTP-245-TF05	WASHER
6	AMTP-245-TF06	BOLT
7	AMTP-245-TF07	Box, Right
8	AMTP-245-TF08	Box, Right
9	AMTP-245-TF09	Spring
10	AMTP-245-TF10	HANDGRIP

# TRANSMISSION DIAGRAM & PART LIST OF TEA PRUNER AMTP-245-2S



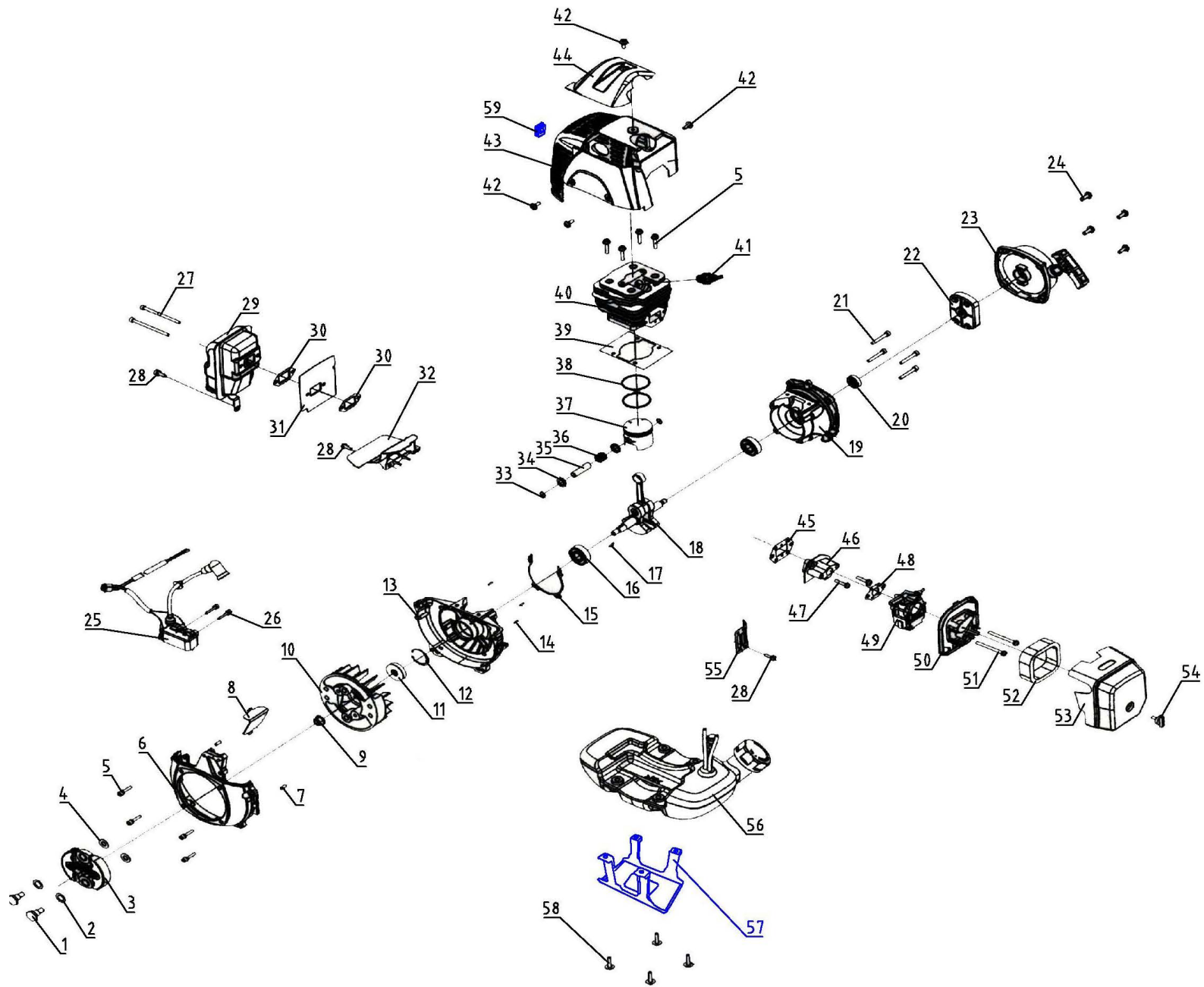
SL NO	PART NO	DESCRIPTION
G	AMTP-245-TG	Harness Ass'y
H	AMTP-245-TH	Blade
I	AMTP-245-TI	Wire Clamp Band

## HOLDER ASSY - J



SL NO	PART NO	DESCRIPTION
J	AMTP-245-TJ	Holder Ass'y
1	AMTP-245-TJ01	Harness Clamp
2	AMTP-245-TJ02	Clamp
3	AMTP-245-TJ03	Screw
4	AMTP-245-TJ04	Nut

# ENGINE DIAGRAM & PART LIST OF TEA PRUNER AMTP-245-2S



# ENGINE DIAGRAM & PART LIST OF TEA PRUNER AMTP-245-2S






SL NO	PART NO	DESCRIPTION	SL NO	PART NO	DESCRIPTION
1	AMTP-G45-E01	Screw Shaft	17	AMTP-G45-E17	Woodruff Key
2	AMTP-G45-E02	Corrugated Washer	18	AMTP-G45-E18	Crankshaft Assy
3	AMTP-G45-E03	Clutch Assy	19	AMTP-G45-E19	Crankcase Right
4	AMTP-G45-E04	Washer	20	AMTP-G45-E20	Oil Seal
5	AMTP-G45-E05	Screw	21	AMTP-G45-E21	Screw(3P)
6	AMTP-G45-E06	Flyweel Cover	22	AMTP-G45-E22	Starter Pulley
7	AMTP-G45-E07	Pin	23	AMTP-G45-E23	Starter Assy
8	AMTP-G45-E08	Baffle	24	AMTP-G45-E24	Screw(3P)
9	AMTP-G45-E09	Nut	25	AMTP-G45-E25	Ignition Coil
10	AMTP-G45-E10	Flyweel	26	AMTP-G45-E26	Screw(3P)
11	AMTP-G45-E11	Oil Seal	27	AMTP-G45-E27	Screw(3P)
12	AMTP-G45-E12	Circlip	28	AMTP-G45-E28	Screw(3P)
13	AMTP-G45-E13	Crankcase Left	29	AMTP-G45-E29	Muffler Assy
14	AMTP-G45-E14	Pin	30	AMTP-G45-E30	Muffler Gasket
15	AMTP-G45-E15	Crankcase Gasket	31	AMTP-G45-E31	Muffler Aluminium Gasket
16	AMTP-G45-E16	Bearing	32	AMTP-G45-E32	Thermal Baffle

# ENGINE DIAGRAM & PART LIST OF TEA PRUNER AMTP-245-2S

SL NO	PART NO	DESCRIPTION	SL NO	PART NO	DESCRIPTION
33	AMTP-G45-E33	Piston Pin Circlip	47	AMTP-G45-E47	Screw(3P)
34	AMTP-G45-E34	Piston Pin Closing Ring	48	AMTP-G45-E48	Carburetor Gasket
35	AMTP-G45-E35	Piston Pin	49	AMTP-G45-E49	Carburetor
36	AMTP-G45-E36	Needle Bearing	50	AMTP-G45-E50	Air Filter Seat
37	AMTP-G45-E37	Piston	51	AMTP-G45-E51	Screw
38	AMTP-G45-E38	Piston Ring	52	AMTP-G45-E52	Sponge Filter
39	AMTP-G45-E39	Cylinder Gasket	53	AMTP-G45-E53	Air Filter Cover
40	AMTP-G45-E40	Cylinder	54	AMTP-G45-E54	Air Filter Screw
41	AMTP-G45-E41	Spark Plug L7T	55	AMTP-G45-E55	Protective Baffle
42	AMTP-G45-E42	Screw	56	AMTP-G45-E56	Fuel Tank Assy
43	AMTP-G45-E43	Cylinder Cover	57	AMTP-G45-E57	Fuel Tank Bracket
44	AMTP-G45-E44	Spark Plug Cover	58	AMTP-G45-E58	Screw(3P)
45	AMTP-G45-E45	Intake Pipe Gasket	59	AMTP-G45-E59	Cylinder Cover Cap
46	AMTP-G45-E46	Intake Pipe	60	AMTP-G45-E60	Cable Ties






# WARRANTY CARD

## CUSTOMER COPY

DATE _____	DATE OF DELIVERY _____	DEALERS OFFICIAL SEAL	DEALERS SIGN _____
PURCHASERS NAME & ADDRESS _____ _____	 CUSTOMER SIGN		
PRODUCT NAME	PRODUCT SERIAL NO.	INVOICE/DN NO.	
			






I/Will accept the terms and conditions of warranty as in the warranty card

## DEALERS COPY

DATE _____	DATE OF DELIVERY _____	DEALERS OFFICIAL SEAL	DEALERS SIGN _____
PURCHASERS NAME & ADDRESS _____ _____	 CUSTOMER SIGN		
PRODUCT NAME	PRODUCT SERIAL NO.	INVOICE/DN NO.	
			

I/Will accept the terms and conditions of warranty as in the warranty card

## COMPANY COPY

DATE _____	DATE OF DELIVERY _____	DEALERS OFFICIAL SEAL	DEALERS SIGN _____
PURCHASERS NAME & ADDRESS _____ _____	 CUSTOMER SIGN		
PRODUCT NAME	PRODUCT SERIAL NO.	INVOICE/DN NO.	
			

I/Will accept the terms and conditions of warranty as in the warranty card

1. LIMITED WARRANTY PERIOD : For a period of six months from the date of Sale / delivery of the product which ever is earlier. 2. LIMITED WARRANTY OBLIGATION : Replacement of defective part(s) by authorized dealer are free of charges. If found defective by reasons of defective material / poor workmanship, parts will be replaced and there will be no value re-imburement. 3. TERMS & CONDITIONS : a. Claims under warranty will be accepted on submission of Warranty Card duly filled and stamped by authorized dealer together with the original purchase document. : b. Shipping / transportation / Incidental charges incurred in replacing defective parts under warranty shall be borne by the purchaser

WARRANTY null & void if

- (i) Lack of maintenance, (ii) Incorrect use of the machine or tampering, (iii) Use of non-genuine spare parts, (iv) Usage of acids, solvents, or any flammable materials, (v) Non-usage of filter water / clear water / soft water & using water above 40°C temperature, (vi) While using the pressure washers to draw water which is contaminated with dust & solvents (eg. paint thinners, gasoline, oil, etc.), (vii) Repair done by unauthorized service people, (viii) Those parts subject to wear & tear due to normal operations and plastic parts, rubber items etc, (ix) Loose connections, faulty electrical fixtures & fluctuations in power supply.
- 4. Should any failure occur during or after the warranty period, customer does not have the right to interrupt payment / price discount.
- 5. Incidental or consequential damages like inconvenience commercial loss, loss of tie, mental agony etc.
- 6. Loss of any nature due to operation or non-operation is not covered under warranty.
- 7. All free service are at Dealer's service point only.
- 8. Warranty ceases if service is not done periodically.
- 9. The attached card should be completed and returned to Ratnagiri Impex Pvt. Ltd. for registration immediately after sale / delivery.
- 10. The warranty is void unless you register the warranty card with Ratnagiri Impex Pvt. Ltd.
- 11. The decision of Ratnagiri Impex Pvt. Ltd., in settling the warranty is final in all respects.
- 12. All disputes are subject to Bangalore Courts Jurisdiction

1. LIMITED WARRANTY PERIOD : For a period of six months from the date of Sale / delivery of the product which ever is earlier. 2. LIMITED WARRANTY OBLIGATION : Replacement of defective part(s) by authorized dealer are free of charges. If found defective by reasons of defective material / poor workmanship, parts will be replaced and there will be no value re-imburement. 3. TERMS & CONDITIONS : a. Claims under warranty will be accepted on submission of Warranty Card duly filled and stamped by authorized dealer together with the original purchase document. : b. Shipping / transportation / Incidental charges incurred in replacing defective parts under warranty shall be borne by the purchaser.

WARRANTY null & void if

- (i) Lack of maintenance, (ii) Incorrect use of the machine or tampering, (iii) Use of non-genuine spare parts, (iv) Usage of acids, solvents, or any flammable materials, (v) Non-usage of filter water / clear water / soft water & using water above 40°C temperature, (vi) While using the pressure washers to draw water which is contaminated with dust & solvents (eg. paint thinners, gasoline, oil, etc.), (vii) Repair done by unauthorized service people, (viii) Those parts subject to wear & tear due to normal operations and plastic parts, rubber items etc, (ix) Loose connections, faulty electrical fixtures & fluctuations in power supply.
- 4. Should any failure occur during or after the warranty period, customer does not have the right to interrupt payment / price discount.
- 5. Incidental or consequential damages like inconvenience commercial loss, loss of tie, mental agony etc.
- 6. Loss of any nature due to operation or non-operation is not covered under warranty.
- 7. All free service are at Dealer's service point only.
- 8. Warranty ceases if service is not done periodically.
- 9. The attached card should be completed and returned to Ratnagiri Impex Pvt. Ltd. for registration immediately after sale / delivery.
- 10. The warranty is void unless you register the warranty card with Ratnagiri Impex Pvt. Ltd.
- 11. The decision of Ratnagiri Impex Pvt. Ltd., in settling the warranty is final in all respects.
- 12. All disputes are subject to Bangalore Courts Jurisdiction

1. LIMITED WARRANTY PERIOD : For a period of six months from the date of Sale / delivery of the product which ever is earlier. 2. LIMITED WARRANTY OBLIGATION : Replacement of defective part(s) by authorized dealer are free of charges. If found defective by reasons of defective material / poor workmanship, parts will be replaced and there will be no value re-imburement. 3. TERMS & CONDITIONS : a. Claims under warranty will be accepted on submission of Warranty Card duly filled and stamped by authorized dealer together with the original purchase document. : b. Shipping / transportation / Incidental charges incurred in replacing defective parts under warranty shall be borne by the purchaser.

WARRANTY null & void if

- (i) Lack of maintenance, (ii) Incorrect use of the machine or tampering, (iii) Use of non-genuine spare parts, (iv) Usage of acids, solvents, or any flammable materials, (v) Non-usage of filter water / clear water / soft water & using water above 40°C temperature, (vi) While using the pressure washers to draw water which is contaminated with dust & solvents (eg. paint thinners, gasoline, oil, etc.), (vii) Repair done by unauthorized service people, (viii) Those parts subject to wear & tear due to normal operations and plastic parts, rubber items etc, (ix) Loose connections, faulty electrical fixtures & fluctuations in power supply.
- 4. Should any failure occur during or after the warranty period, customer does not have the right to interrupt payment / price discount.
- 5. Incidental or consequential damages like inconvenience commercial loss, loss of tie, mental agony etc.
- 6. Loss of any nature due to operation or non-operation is not covered under warranty.
- 7. All free service are at Dealer's service point only.
- 8. Warranty ceases if service is not done periodically.
- 9. The attached card should be completed and returned to Ratnagiri Impex Pvt. Ltd. for registration immediately after sale / delivery.
- 10. The warranty is void unless you register the warranty card with Ratnagiri Impex Pvt. Ltd.
- 11. The decision of Ratnagiri Impex Pvt. Ltd., in settling the warranty is final in all respects.
- 12. All disputes are subject to Bangalore Courts Jurisdiction



**FREE SERVICE COUPON (30DAYS/30HRS. WHICHEVER IS EARLIER)**

MODEL

SERIAL NUMBER

PDI DATE

SERVICE NO.

PURCHASE BILL NO.

DATE

DEALERS OFFICE SEAL

- 1. Check and test the fuel mixture
- 3. Check , clean and adjust the spark plug
- 5. Check and sparken the cutting tools
- 7. Start and check the noise, vibration, loosen etc..

OPERATIONS

- 2. check and clean the air filter
- 4. Check and adjust the carburetor tuning
- 6. Product familirisation on usage
- 8. Routine maintenance and shortage.

**FREE SERVICE COUPON (30DAYS/30HRS. WHICHEVER IS EARLIER)**

MODEL

SERIAL NUMBER

PDI DATE

SERVICE NO.

PURCHASE BILL NO.

DATE

DEALERS OFFICE SEAL

- 1. Check and test the fuel mixture
- 3. Check , clean and adjust the spark plug
- 5. Check and sparken the cutting tools
- 7. Start and check the noise, vibration, loosen etc..

OPERATIONS

- 2. check and clean the air filter
- 4. Check and adjust the carburetor tuning
- 6. Product familirisation on usage
- 8. Routine maintenance and shortage.

**FREE SERVICE COUPON (30DAYS/30HRS. WHICHEVER IS EARLIER)**

MODEL

SERIAL NUMBER

PDI DATE

SERVICE NO.

PURCHASE BILL NO.

DATE

DEALERS OFFICE SEAL

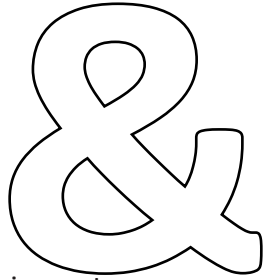
- 1. Check and test the fuel mixture
- 3. Check , clean and adjust the spark plug
- 5. Check and sparken the cutting tools
- 7. Start and check the noise, vibration, loosen etc..

OPERATIONS

- 2. check and clean the air filter
- 4. Check and adjust the carburetor tuning
- 6. Product familirisation on usage
- 8. Routine maintenance and shortage.



# DOS



# DONTs

attempting to use the equipments.

1. Always read the instruction manual supplied along with the equipments and understand the correct installation and operating procedures before  
  
trousers and jackets while operating potentially dangerous machines
2. It is important to use the personal protection equipments such as head helmet with visor, ear defenders, goggles, safety gloves, cut resistant shoes,
3. Avoid untrained persons using the equipments. Children must not be allowed to handle these equipments
4. Always use genuine spares and accessories in repairs and usage to derive maximum life of the equipments.
5. Always keep the equipments in good working condition to minimize loss of output as well as to reduce the pollution and save the environment
6. Do not use the machine within range of persons unless they wear protective clothing
7. Do not operate the machine when fatigued or under the influence of alcohol or drugs
8. For more query kindly contact for our Service Center/Dealer/ franchise

# NO. 1 CHOICE OF FARMERS SINCE 1999



Marketed by.  
**ratnagiri  
impex**  
BRINGING YOU THE FUTURE... NOW

**RATNAGIRI IMPEX PVT., LTD.,**

Annapurna House, #1 / 1G, 7th Cross, New  
Guddadahalli

Mysore Road, Bangalore - 560 026

Missed Call : 7393 938 938

Email: [ask@agrimart.in](mailto:ask@agrimart.in)