



**Green Panther**  
Naturally Powerful

---

## **GP-4019BP-P BRUSH CUTTER BACK PACK**



# USER MANUAL

Note: Please read the following instructions before use. This book contains important information on SAFETY, ASSEMBLY, OPERATION & DISCLAIMER: DUE TO CONSTANT UPGRADATION, FEATURES AND SPECIFICATIONS ARE SUBJECT TO CHANGE WITHOUT NOTICE

# GENERAL INSTRUCTIONS FOR SAFETY OPERATION

All our company products are delivered with an Owner's manual. Please read it carefully to get acquainted with the operation of your unit. For further details, consult your dealer.

## Before Operation

Protect head (eyes and ears), feet and hands with safety hat, ear cover, goggles, safety shoes and protective clothes.

Dress properly, do not wear loose clothing or jewelry that could become caught in moving parts of the unit.

Never let a child operate the machine.

Be sure to check bolts and other fasteners to see if any of them have become loose or missing.

Cutting blade

- The cutter blade is very sharp, handle it with care.

- To install the blade correctly, read the instructions in this manual thoroughly.

- The Cutter fixing blot is left threaded, turn counter-clockwise to tighten, clockwise to loosen.

## Fuel

**NEVER OPERATE THE ENGINE WITH GASOLINE ONLY.**

The engine requires a fuel mix of 25 parts regular gasoline to 1 part quality two-cycle oil

Do not fill the fuel tank while the engine is running or still warm. The fuel should be poured into the fuel tank when the engine is cold.

**Do NOT SMOKE WHEN FUEL IS ADDED**, and when you are working with the machine.

Keep an open flame away because fuel vapors are flammable.

Never smoke or allow a flame to come close to the unit while mixing fuel, filling the tank or maintaining the unit.

Fuel should be stored in a dry and cool place.

## During Operation

The unit should be operated in a well ventilated area.

Keep children away. Onlookers should be kept at a safe distance from the work area, at least 7 - 8m(30 feet).

Keep all parts of your body and clothing away from the blade when starting or running the engine.

While cutting, hold the machine firmly with both hands, and stand with feet well-balanced and your body balanced.



The operator must obey the local regulations of cutting area.

Never carry the unit with the engine running.

For safety, the unit should not run in full throttle without any load.

Don't run the unit without a muffler.

During a heavy work, be always with a partner.

When making a repair or adjustment, the unit must be stopped and the fuel completely drained.

### For Long-term Storage

Drain all fuel from the carburetor, fuel tank and fuel lines.

Repair any damage which has resulted from use.

Clean the unit with a clean rag, or the use of high pressure air hose.

Put a few drops of engine oil into the cylinder through the spark plug hole, and spin the engine over several times to distribute oil, then reinstall the spark plug.

Cover the unit and store it in a dry area.

## GENERAL INSTRUCTIONS FOR SAFETY OPERATION

Brush Cutter is composed of three major units; engine, flexible shaft and drive shaft.

### 1. Assembling drive shaft (Fig. 1)

Insert the flexible shaft into the joint pipe of Drive Shaft to the end and tighten the joint pipe bolt by engaging the bolt to the slot of flexible shaft.

NOTE: Make sure to align square end of flexible inner shaft with square hole of drive shaft by slightly rotating drive shaft. So that they are connected firmly.

### 2. Assembling flexible shaft (Fig.2)

Remove temporarily installed PIN. Insert flexible shaft into clutch case to the end by inserting square end of flexible inner shaft into square hole of adaptor in Clutch Case. Then screw-in the PIN by engaging the pin the slot of flexible shaft.

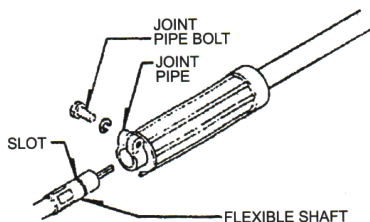


Fig. 1

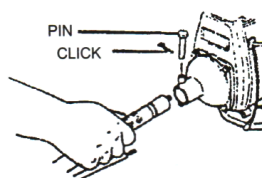


Fig. 2



### 3. Throttle cable and stop cord

Put throttle cable and stop cord through cable passage of shaft grip, then connect each terminal with each proper position respectively.(Fig.3)

Finally, clamp those connected throttle cable and stop cord together to flexble shaft with two wire clamp bands provided.(Fig.4)

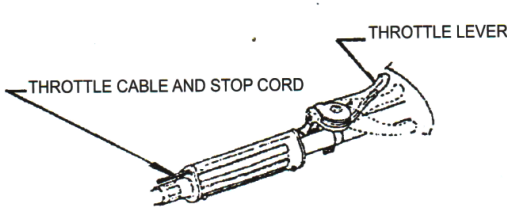


Fig .3

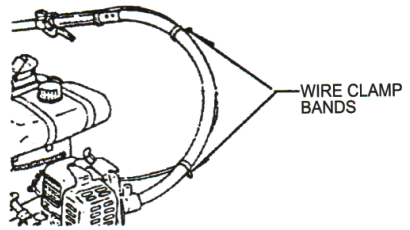


Fig .4

### 4. Haldle (Fig.5)

Remove the handle bracket A.

Set the handle on, and attach the handle bracket A with two bolts slightly. And adjust position of the handle according to your working style. Then fix it firmly with the bolts.

### 5. Safety cover(Fig.6)

1) Install the safety cover on the shaft with the safety cover bracket and the screws provided.

2) Tighten the rcrews after setting the safety cover bracket at the appropriate position.

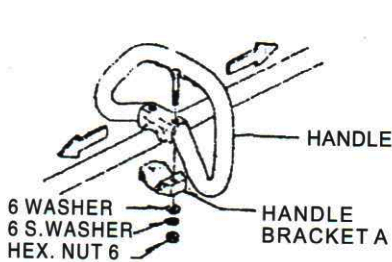


Fig .5

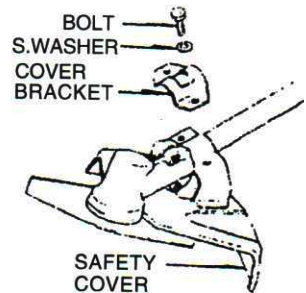


Fig .6



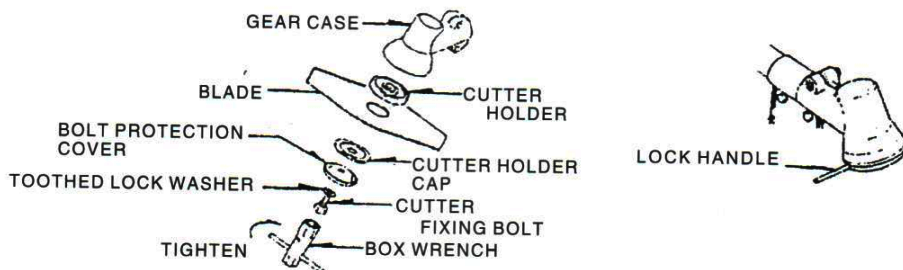
## 6. Blade

1) When installing a steel blade, fit the blade as shown in the fig. 7

2) When installing or removing a blade, lock cutter holder with lock handle to tighten or to untighten

as shown in Fig. 8

NOTE: As the blade fixing bolt is left threaded, turn it counter-clockwise and take a special care not to hurt your fingers by the blade. Be sure to check if it has been fitted correctly.



## OPERATING PROCEDURES

Adjust shoulder belt length as you feel appropriate before starting engine.

### I. Filling the fuel (Fig.9)

1) This engine uses a fuel mix of 25 parts regular gasoline to 1 part of two-cycle oil. The fuel should be premixed prior to pouring into the fuel tank. It is recommended a quality two-cycle oil be used in the fuel mix.

**CAUTION: FAILURE TO MIX OIL WITH GASOLINE WILL RESULT IN SEIZURE AND SEVERE DAMAGE TO THE ENGINE.**

2) Be sure to check bolts and other fasteners to see if any of them have become loose or missing.

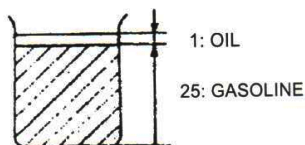


Fig .9

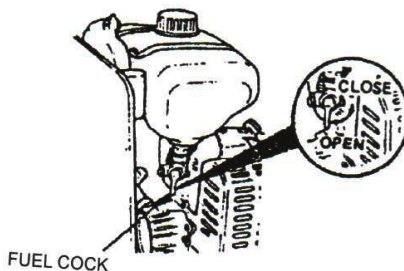


Fig .10

## 2. Starting

1) Open the fuel cock. (Fig. 10)

2) Move the throttle lever to start position or about 1/4 full throttle, in case of metal lever. (Fig. 11)

NOTE: Starting with full throttle causes sudden high revolution of Blade, which is dangerous, so please avoid it.

3) Set the choke lever to CLOSE. (Fig. 12)

4) Pull the recoil starter briskly, TAKING CARE TO KEEP THE HANDLE in your grasp, while not allowing it to snap back.

5) When you hear combustible sounds a couple of times, move the choke lever back to as it is (open position). Then pull the recoil starter briskly.

6) After starting the engine, allow it about 2-3 minutes to warm up before subjecting it to any load.

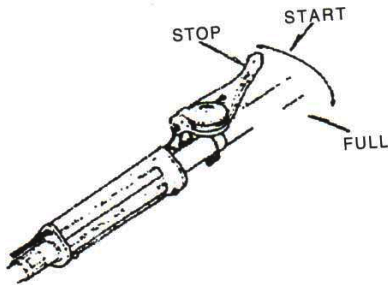


Fig .11

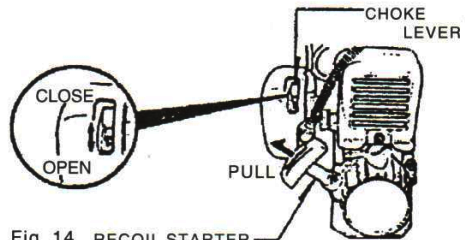


Fig .12

**CAUTION :** Blade may turn and flexible shaft may swing as engine starts. Do not let the blade touch any object when engine starts.

\* Adjustment (Fig. 13)

When the idle speed is too high or too low, adjust it with the idle speed adjusting screw.

In case that the blade keeps turning at the idling speed, turn the idle adjusting screw counterclockwise.

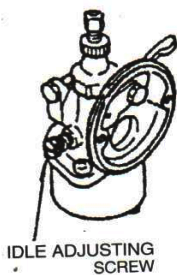
3. How to carry (Fig.14)

1) First, hold the handle with your left hand and bend yourself down. Slip your right arm into the right belt.

2) Transfer the shaft to your right hand and reaching back, slip the left arm through the other belt.

3) When the engine unit is mounted on your back, grip the shaft as shown in the figure.





#### 4. Cutting

1) The blade turns counterclockwise, therefore be advised to operate the cutter from right to leftward for efficient cutting.

2) When working on a slope, the blade should allow the contour from top to bottom, with the operator looking down to the left.

3) Keep the onlookers out of the working area at least 7~8m (30ft). (Fig. IS)

4) Special care

If the cutter should strike against stones or the like, stop the engine and cutter and make sure that the cutter and related parts are in normal condition.

When grass or vine twines round the cutter, stop the engine and blade and remove grass or vine.

#### 5. Stopping

1) Decrease the engine speed, and depress the stop button until engine has stopped. (Fig. 16)

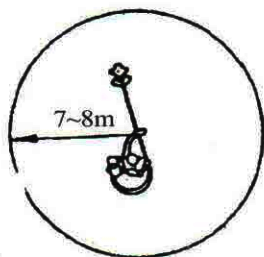


Fig .15

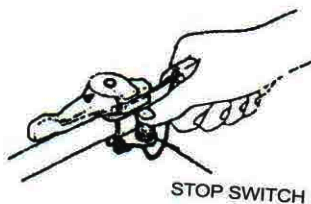


Fig .16



# MAINTENANCE

## 3. I. Periodical check

### 1) Cleaning

1 - 1 Clean the cleaner element. (Fig. 17) 1 - 2 Scrape off the carbon from the spark plug gap (standard gap is 0.6mm or 0.023in. ). (Fig. 18) 1 - 3 Clean the cylinder exhaust port and muffler.

Remove the grasses or dusts entered in the cylinder cover or fan case cover (otherwise they may cause a trouble such as an overheating).

2) Inspect carefully for any fuel or oil leaks.

3) Check all nuts, bolts, screws, etc., making sure they are tightened and secured as they should be.

4) Lubricate Gear Case, every 50 hours of use.

5) When lubricating flexible shaft, apply grease in the flexible pipe of clutch case side. (It is recommended to apply grease after every 10 hours of use.)

### 2. Storage

1) Completely drain the fuel out of the tank and the carburetor.

2) Keep the engine always to be higher than gear box part.

3) Clean the unit carefully and keep it from moisture.

Before installation, put throttle, cable and stop cord through cable passage of the shaft grip.

1) The throttle lever and stop switch are temporarily assembled together. so they should be disassembled first.

2) Put the round head of throttle cable and throttle cable together into the handle channel.

3) Fix the throttle lever on the hard shaft.

4) Finally, fix the stop switch on the throttle lever with a screw.

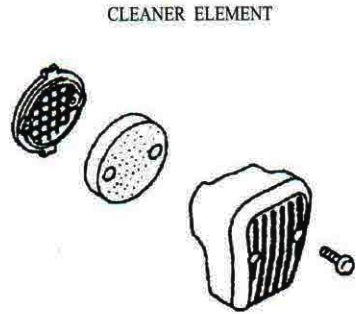


Fig .17

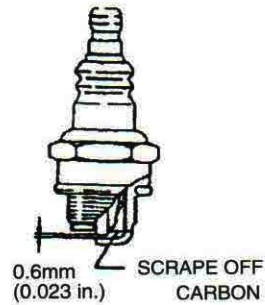


Fig .18



# SPECIFICATIONS

	Model	4019BP-P
Engine	Type	Brush cutter
	Displacement	42.7cc
	Max.Output	1.25kw 6500rmin
	Carbureor	Diaphragm type
	Lgnitiop system	rc [gnition
	Lgnition plug	BM-A
	Fuel	Mixed fuel of Gasoline and 2 cycle oil at 25: 1
	Fuel tank capacity	1.2L
Body	Drive	Flexible shaft, Drive shaft,Pinion and Gear
	Rotational direction of the cutter (Viewed from the top of the cutter)	Counter-clockwise
	Dry weight	1 0.7kg



## PARTS LIST FOR OUR COMPANY BACK-PACK BRUSH CUTTER MODEL FOREWORD

1. The parts list contains listing for all the spare parts available for the OUR COMPAN" --Y BACK. PACK BRUSH CUTTER MODEL and should always be used \\hen ordering genuine OUR COMPANY parts.

2. You may happen to receive ordered parts with a slightly different parts number which has nothing to do with interchangeability, but it is improved one.

3. In this parts list there may be some different accessories or optional parts from your unit for this manual covers several models.

### HOW TO READ PARTS LIST

1. When "V" appears in the quantity column, the quantity of the specific part is variable and will have to be determined when the unit is reassembled.

2. The following abbreviations are used in this list:

COMP. (COMPLETE) ... This represents a part made of two or more pieces permanently fastened together, which cannot be broken down into separate parts.

ASS'Y (ASSEMBLY) ... This represents a part made of two or more pieces which can be broken down into separate parts.

HEX. . . . . HEXAGONAL

SCREW ..... ROUND HEAD SCREW

F. H. SCREW ..... COUNTER SU"JK SCREW

WASHER ..... FLAT WASHER

S. WASHER ..... SPRING (LOCK) WASHER

S. NUT ..... SPECIAL NUT

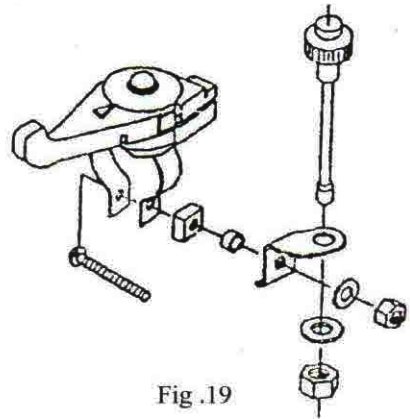


Fig. 19



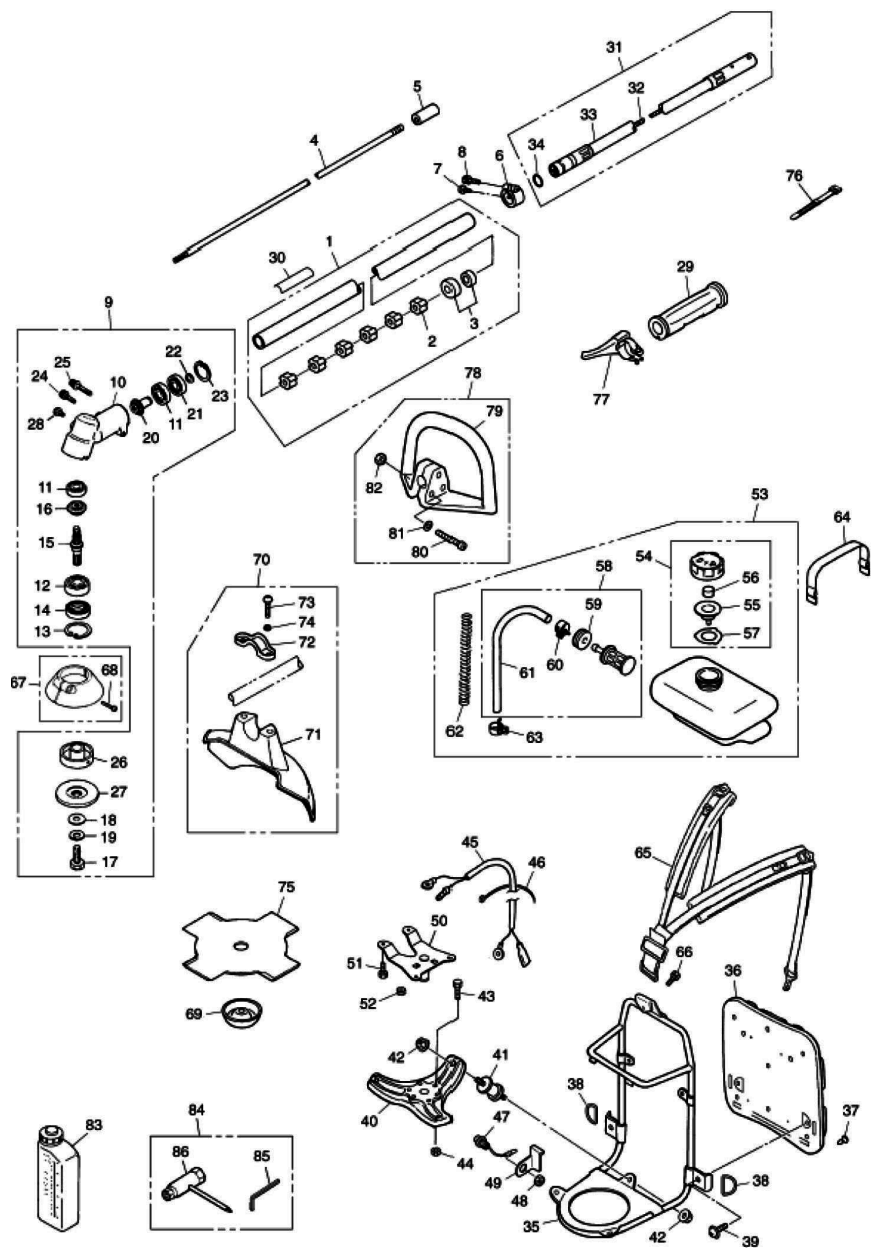
All dimensions are in millimeters except for special fasteners, pulleys, wheels and steel balls.

PARTS NAME	EXAMPLE	INTERPRETATION
SCREW or BOLT	5X 13	5mm diameter, 13mm length
WASHER	6	for 6mm fastner
TUBE	6X 150	6mm inside diameter, 150mm lenth
PIN	6X 12	6mm diameter, 12mm length
OILSEAL	12225	12mm inside diameter, 22mm outside diameter. 5mm thick
Gasket Or Ring	8	8mm inside diameter

ALL DATA SUBJECT TO CHANGE WITHOUT NOTICE



# PIPE ASSEMBLY DIAGRAM & PART LIST OF GP 4019BP-P



<b>SL</b>	<b>PART NO.</b>	<b>DESCRIPTION</b>
1	4019BPP-T1	Pipe Assembly
2	4019BPP-T2	Shock pad
3	4019BPP-T3	Bearing
4	4019BPP-T4	Shaft
5	4019BPP-T5	Connector
6	4019BPP-T6	Fastener
7	4019BPP-T7	Screw
8	4019BPP-T8	Bolt
9	4019BPP-T9	Gear case assembly
10	4019BPP-T10	Gear case
11	4019BPP-T11	Bearing
12	4019BPP-T12	Bearing
13	4019BPP-T13	Circlip
14	4019BPP-T14	Oil seal
15	4019BPP-T15	Gear shaft
16	4019BPP-T16	Gear
17	4019BPP-T17	Bolt
18	4019BPP-T18	Gasket
19	4019BPP-T19	Washer
20	4019BPP-T20	Pinion
21	4019BPP-T21	Bearing
22	4019BPP-T22	Circlip
23	4019BPP-T23	Stop ring
24	4019BPP-T24	Bolt
25	4019BPP-T25	Bolt
26	4019BPP-T26	Holder A
27	4019BPP-T27	Holder B

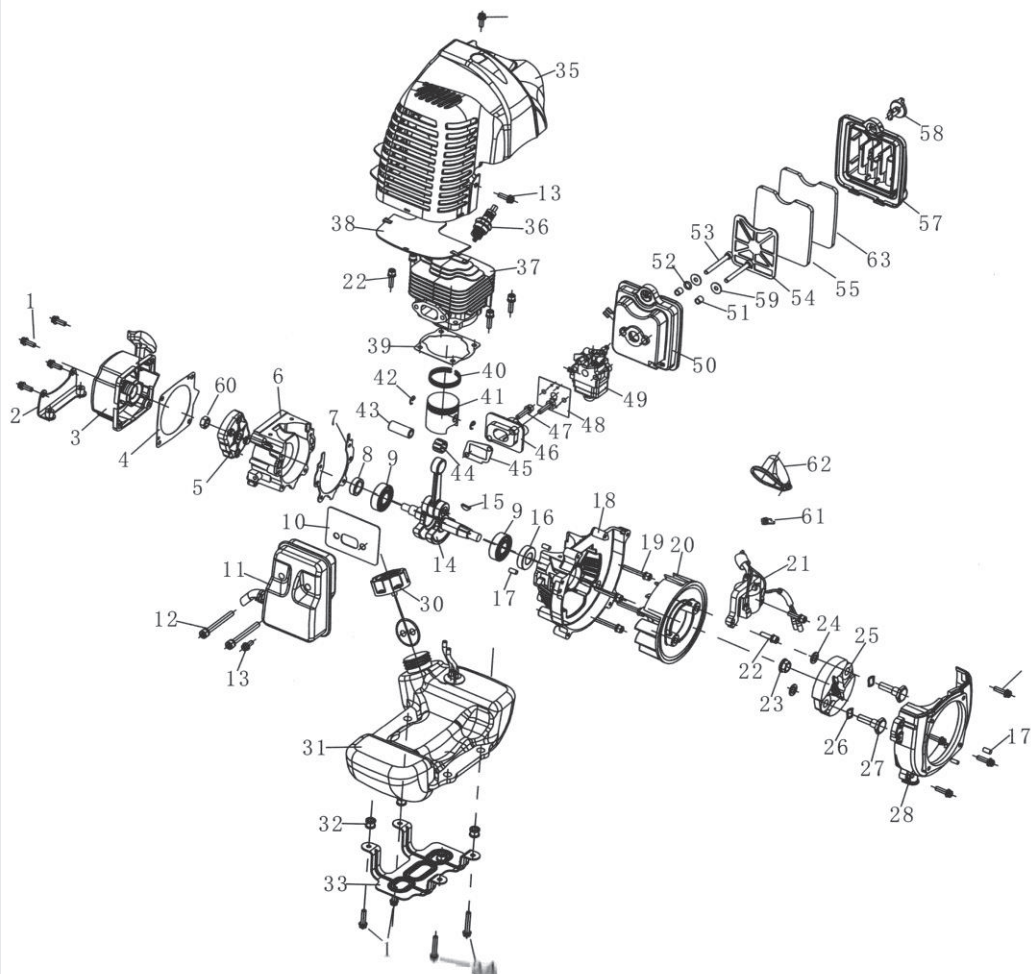
<b>SL</b>	<b>PART NO.</b>	<b>DESCRIPTION</b>
28	4019BPP-T28	Bolt
29	4019BPP-T29	
30	4019BPP-T30	
31	4019BPP-T31	Flexible shaft assembly
32	4019BPP-T32	Shaft
33	4019BPP-T33	Flexible shaft
34	4019BPP-T34	O-rings
35	4019BPP-T35	Frame carrier
36	4019BPP-T36	Back cushion
37	4019BPP-T37	Pin
38	4019BPP-T38	Ring
39	4019BPP-T39	Screw
40	4019BPP-T40	Support frame
41	4019BPP-T41	Connector
42	4019BPP-T42	Nut
43	4019BPP-T43	bolt
44	4019BPP-T44	Nut
45	4019BPP-T45	On/Off line
46	4019BPP-T46	Tie
47	4019BPP-T47	Switch
48	4019BPP-T48	Nut
49	4019BPP-T49	Fix plate
50	4019BPP-T50	Fix plate
51	4019BPP-T51	Bolt
52	4019BPP-T52	Nut
53	4019BPP-T53	Fuel tank assembly
54	4019BPP-T54-57	Fuel tank cap assembly



<b>SL</b>	<b>PART NO.</b>	<b>DESCRIPTION</b>
55	4019BPP-T58	Filter assembly
56	4019BPP-T60	Hoop
57	4019BPP-T61	Oil pipe
58	4019BPP-T62	Spring
59	4019BPP-T63	Circlip
60	4019BPP-T64	Tie
61	4019BPP-T65	Belt
62	4019BPP-T66	Bolt
63	4019BPP-T67	Cover
64	4019BPP-T68	Bolt
65	4019BPP-T69	
66	4019BPP-T70	Guard assembly
67	4019BPP-T71	Guard
68	4019BPP-T72	Fix frame
69	4019BPP-T73	Bolt
70	4019BPP-T74	Washer
71	4019BPP-T75	Blade
72	4019BPP-T76	
73	4019BPP-T77	Switch assembly
74	4019BPP-T78	Handle assembly
75	4019BPP-T79	Handle
76	4019BPP-T80	Bolt
77	4019BPP-T81	Washer
78	4019BPP-T82	Nut



# ENGINE SPARE PARTS DIAGRAM & PART LIST OF GP 4019BP-P





SL	PART NO.	DESCRIPTION
1	4019BPP-E1	SCREW
2	4019BPP-E2	TANK SUPPORT
3	4019BPP-E3	STARTER
4	4019BPP-E4	AL.GASKET
5	4019BPP-E5	PULLEY
6	4019BPP-E6	LEFT CASE
7	4019BPP-E7	CASE GASKET
8	4019BPP-E8	OIL SEALING
9	4019BPP-E9	BEARING
10	4019BPP-E10	MUFFER GASKET
11	4019BPP-E11	MUFFLER
12	4019BPP-E12	SCREW
13	4019BPP-E13	SCREW
14	4019BPP-E14	CRANKSHAFT
15	4019BPP-E15	SEMI KEY
16	4019BPP-E16	OIL SEALING
17	4019BPP-E17	PIN
18	4019BPP-E18	RIGHT CASE
19	4019BPP-E19	SCREW
20	4019BPP-E20	FLY WHEEL
21	4019BPP-E21	IGNITION COIL
22	4019BPP-E22	SCREW
23	4019BPP-E23	NUT
24	4019BPP-E24	GASKET
25	4019BPP-E25	CLUTCH
26	4019BPP-E26	WASHER
27	4019BPP-E27	CLUTCH SCREW
28	4019BPP-E28	SIDE COVER
29	4019BPP-E29	SCREW
30	4019BPP-E30	FUEL CAP
31	4019BPP-E31	FUEL TANK

SL	PART NO.	DESCRIPTION
32	4019BPP-E32	RUBBER GASKET
33	4019BPP-E33	TANK SUPPORT
34	4019BPP-E34	SCREW
35	4019BPP-E35	CYLINDER COVER
36	4019BPP-E36	SPARK PLUG
37	4019BPP-E37	CYLINDER COVER
38	4019BPP-E38	BAFFLE
39	4019BPP-E39	CYLINDER GASKET
40	4019BPP-E40	PISTON RING
41	4019BPP-E41	PISTON RING
42	4019BPP-E42	PISTON CLIP
43	4019BPP-E43	PISTON PIN
44	4019BPP-E44	NEEDLE BEARING
45	4019BPP-E45	MANIFOLD GASKET
46	4019BPP-E46	INTAKE MANIFOLD
47	4019BPP-E47	SCREW
48	4019BPP-E48	CARB. GASKET
49	4019BPP-E49	CARBURETOR
50	4019BPP-E50	AIR FILTER BASE
51	4019BPP-E51	BUSHER
52	4019BPP-E52	WASHER
53	4019BPP-E53	SCREW
54	4019BPP-E54	GASKET
55	4019BPP-E55	AIR ELEMENT
56	4019BPP-E57	AIR COVER
57	4019BPP-E58	AIR FILTER SCREW
58	4019BPP-E59	WASHER
59	4019BPP-E60	NUT
60	4019BPP-E61	SPARK SPRING
61	4019BPP-E62	CAP
62	4019BPP-E63	AIR ELEMENT



## INSPECTION & MAINTENANCE

For safety use, make sure the machine is cleaned every three-months. Before working, make sure to inspect the filter and the nozzle, and ensure there is no impurity. After working, make sure there is no water in the pump and the hose.

If the machine needs to be repaired in the guarantee period, please return the machine to the shop. You need to provide the certificate of purchase in order to repair or get the substitute.

Before Packing, the machine should be cleaned, then use closed packaging, packaging should be firm. Store the machine in dry place.

For transportation safety. The machine should comply with ISTA.



Meaning of crossed - out wheeled dustbin:

Do not dispose of electrical machines as unsorted municipal waste, use separate collection facilities.

If electrical machines are disposed of in landfills or dumps, hazardous substances can leak into the groundwater and get into the food chain, damaging your health and well-being.

When replacing old machines with new ones, the retailer is legally obligated to take back your old machine for disposals at least free of charge.



# 1st Free Service Coupon

ISO 9001-2015  
CERTIFIED COMPANY



FREE SERVICE COUPON (30 Days / 30 hrs (Which ever is earlier))

Model  
**GP-4019BP-P BRUSH CUTTER**

PDI Date  
\_\_\_\_\_

Service No.  
\_\_\_\_\_

Purchase bill no. \_\_\_\_\_ Date  
\_\_\_\_\_

Dealer's Office Seal & Signature  
\_\_\_\_\_

Serial Number  
\_\_\_\_\_

Customer Signature.....

*Conditions: Operations listed have been performed to my entire satisfaction without any labour charges. Only consumables were charged.*

agriculture | horticulture | sericulture | plantations | forest | garden | healthcare

WARRANTY AND FREE SERVICE COUPON



# 2nd Free Service Coupon

ISO 9001-2015  
CERTIFIED COMPANY

FREE SERVICE COUPON (60 Days / 60 hrs (Which ever is earlier))

Model  
**GP-4019BP-P BRUSH CUTTER**

PDI Date  
\_\_\_\_\_

Service No.  
\_\_\_\_\_

Purchase bill no. \_\_\_\_\_ Date  
\_\_\_\_\_

Dealer's Office Seal & Signature  
\_\_\_\_\_

Serial Number  
\_\_\_\_\_

Customer Signature.....

*Conditions: Operations listed have been performed to my entire satisfaction without any labour charges. Only consumables were charged.*

agriculture | horticulture | sericulture | plantations | forest | garden | healthcare

WARRANTY AND FREE SERVICE COUPON



# 3rd Free Service Coupon

ISO 9001-2015  
CERTIFIED COMPANY

FREE SERVICE COUPON (90 Days / 120 hrs (Which ever is earlier))

Model  
**GP-4019BP-P BRUSH CUTTER**

PDI Date  
\_\_\_\_\_

Service No.  
\_\_\_\_\_

Purchase bill no. \_\_\_\_\_ Date  
\_\_\_\_\_

Dealer's Office Seal & Signature  
\_\_\_\_\_

Serial Number  
\_\_\_\_\_

Customer Signature.....

*Conditions: Operations listed have been performed to my entire satisfaction without any labour charges. Only consumables were charged.*

agriculture | horticulture | sericulture | plantations | forest | garden | healthcare

WARRANTY AND FREE SERVICE COUPON

1. **LIMITED WARRANTY PERIOD** : For a period of six months from the date of Sale / delivery of the product which ever is earlier. 2. **LIMITED WARRANTY OBLIGATION** : Replacement of defective part(s) by authorized dealer are free of charges. If found defective by reasons of defective material / poor workmanship, parts will be replaced and there will be no value re-imbursalment. 3. **TERMS & CONDITIONS** : a. Claims under warranty will be accepted on submission of Warranty Card duly filled and stamped by authorized dealer together with the original purchase document. : b. Shipping / transportation / Incidental charges incurred in replacing defective parts under warranty shall be borne by the purchaser.

**WARRANTY null & void if**

- (i) Lack of maintenance, (ii) Incorrect use of the machine or tampering, (iii) Use of non-genuine spare parts, (iv) Usage of acids, solvents, or any flammable materials, (v) Non-usage of filter water / clear water / soft water & using water above 40°C temperature, (vi) While using the pressure washers to draw water which is contaminated with dust & solvents (eg. paint thinners, gasoline, oil, etc.), (vii) Repair done by unauthorized service people, (viii) Those parts subject to wear & tear due to normal operations and plastic parts, rubber items etc, (ix) Loose connections, faulty electrical fixtures & fluctuations in power supply.
4. Should any failure occur during or after the warranty period, customer does not have the right to interrupt payment / price discount.
5. Incidental or consequential damages like inconvenience commercial loss, loss of tie, mental agony etc.
6. Loss of any nature due to operation or non-operation is not covered under warranty.
7. All free service are at Dealer's service point only.
8. Warranty ceases if service is not done periodically.
9. The attached card should be completed and returned to Ratnagiri Impex Pvt. Ltd. for registration immediately after sale / delivery.
10. The warranty is void unless you register the warranty card with Ratnagiri Impex Pvt. Ltd.
11. The decision of Ratnagiri Impex Pvt. Ltd., in settling the warranty is final in all respects.
12. All disputes are subject to Bangalore Courts Jurisdiction

1. **LIMITED WARRANTY PERIOD** : For a period of six months from the date of Sale / delivery of the product which ever is earlier. 2. **LIMITED WARRANTY OBLIGATION** : Replacement of defective part(s) by authorized dealer are free of charges. If found defective by reasons of defective material / poor workmanship, parts will be replaced and there will be no value re-imbursalment. 3. **TERMS & CONDITIONS** : a. Claims under warranty will be accepted on submission of Warranty Card duly filled and stamped by authorized dealer together with the original purchase document. : b. Shipping / transportation / Incidental charges incurred in replacing defective parts under warranty shall be borne by the purchaser.

**WARRANTY null & void if**

- (i) Lack of maintenance, (ii) Incorrect use of the machine or tampering, (iii) Use of non-genuine spare parts, (iv) Usage of acids, solvents, or any flammable materials, (v) Non-usage of filter water / clear water / soft water & using water above 40°C temperature, (vi) While using the pressure washers to draw water which is contaminated with dust & solvents (eg. paint thinners, gasoline, oil, etc.), (vii) Repair done by unauthorized service people, (viii) Those parts subject to wear & tear due to normal operations and plastic parts, rubber items etc, (ix) Loose connections, faulty electrical fixtures & fluctuations in power supply.
4. Should any failure occur during or after the warranty period, customer does not have the right to interrupt payment / price discount.
5. Incidental or consequential damages like inconvenience commercial loss, loss of tie, mental agony etc.
6. Loss of any nature due to operation or non-operation is not covered under warranty.
7. All free service are at Dealer's service point only.
8. Warranty ceases if service is not done periodically.
9. The attached card should be completed and returned to Ratnagiri Impex Pvt. Ltd. for registration immediately after sale / delivery.
10. The warranty is void unless you register the warranty card with Ratnagiri Impex Pvt. Ltd.
11. The decision of Ratnagiri Impex Pvt. Ltd., in settling the warranty is final in all respects.
12. All disputes are subject to Bangalore Courts Jurisdiction

1. **LIMITED WARRANTY PERIOD** : For a period of six months from the date of Sale / delivery of the product which ever is earlier. 2. **LIMITED WARRANTY OBLIGATION** : Replacement of defective part(s) by authorized dealer are free of charges. If found defective by reasons of defective material / poor workmanship, parts will be replaced and there will be no value re-imbursalment. 3. **TERMS & CONDITIONS** : a. Claims under warranty will be accepted on submission of Warranty Card duly filled and stamped by authorized dealer together with the original purchase document. : b. Shipping / transportation / Incidental charges incurred in replacing defective parts under warranty shall be borne by the purchaser.

**WARRANTY null & void if**

- (i) Lack of maintenance, (ii) Incorrect use of the machine or tampering, (iii) Use of non-genuine spare parts, (iv) Usage of acids, solvents, or any flammable materials, (v) Non-usage of filter water / clear water / soft water & using water above 40°C temperature, (vi) While using the pressure washers to draw water which is contaminated with dust & solvents (eg. paint thinners, gasoline, oil, etc.), (vii) Repair done by unauthorized service people, (viii) Those parts subject to wear & tear due to normal operations and plastic parts, rubber items etc, (ix) Loose connections, faulty electrical fixtures & fluctuations in power supply.
4. Should any failure occur during or after the warranty period, customer does not have the right to interrupt payment / price discount.
5. Incidental or consequential damages like inconvenience commercial loss, loss of tie, mental agony etc.
6. Loss of any nature due to operation or non-operation is not covered under warranty.
7. All free service are at Dealer's service point only.
8. Warranty ceases if service is not done periodically.
9. The attached card should be completed and returned to Ratnagiri Impex Pvt. Ltd. for registration immediately after sale / delivery.
10. The warranty is void unless you register the warranty card with Ratnagiri Impex Pvt. Ltd.
11. The decision of Ratnagiri Impex Pvt. Ltd., in settling the warranty is final in all respects.
12. All disputes are subject to Bangalore Courts Jurisdiction

Warranty Card

CUSTOMER COPY



Purchaser's Name & Address

\_\_\_\_\_  
\_\_\_\_\_

Product Name

**GP-4019BP-P BRUSH CUTTER**

Product Serial No.

\_\_\_\_\_

Invoice / DN No.

\_\_\_\_\_

Date of Delivery

\_\_\_\_\_

Dealer's Office Seal

\_\_\_\_\_

Dealer Sign \_\_\_\_\_

Customer Sign. \_\_\_\_\_

I/We accept the terms and conditions of Warranty as in the Warranty Card.



Warranty Card

DEALER'S COPY

Purchaser's Name & Address

\_\_\_\_\_  
\_\_\_\_\_

Product Name

**GP-4019BP-P BRUSH CUTTER**

Product Serial No.

\_\_\_\_\_

Invoice / DN No.

\_\_\_\_\_

Date of Delivery

\_\_\_\_\_

Dealer's Office Seal

\_\_\_\_\_

Dealer Sign \_\_\_\_\_

Customer Sign. \_\_\_\_\_

I/We accept the terms and conditions of Warranty as in the Warranty Card.



Warranty Card

COMPANY COPY

Purchaser's Name & Address

\_\_\_\_\_  
\_\_\_\_\_

Product Name

**GP-4019BP-P BRUSH CUTTER**

Product Serial No.

\_\_\_\_\_

Invoice / DN No.

\_\_\_\_\_

Date of Delivery

\_\_\_\_\_

Dealer's Office Seal

\_\_\_\_\_

Dealer Sign \_\_\_\_\_

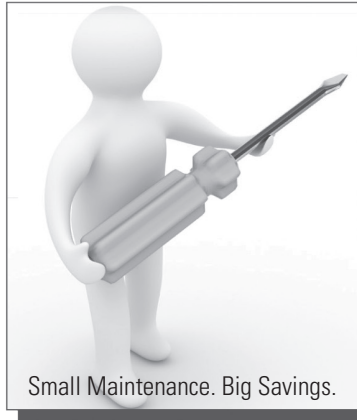
Customer Sign. \_\_\_\_\_

I/We accept the terms and conditions of Warranty as in the Warranty Card.





Small Maintenance. Big Savings.



Small Maintenance. Big Savings.



Small Maintenance. Big Savings.



# Do's & Don'ts

- Always read the instruction manual supplied along with the equipments and understand the correct installation and operating procedures before attempting to use the equipments.
- It is important to use the personal protection equipments such as head helmet with visor, ear defenders, goggles, safety gloves, cut resistant shoes, trousers and jackets while operating potentially dangerous machines.
- Avoid untrained persons using the equipments. Children must not be allowed to handle these equipments.
- Always use genuine spares and accessories in repairs and usage to derive maximum life of the equipments.
- Always keep the equipments in good working condition to minimize loss of output as well as to reduce the pollution and save the environment.
- Do not use the machine within range of persons unless they wear protective clothing.
- Do not operate the machine when fatigued or under the influence of alcohol or drugs.
- To reduce the risk of injury, close supervision is necessary when a machine is used near children. Tea Harvester shall not be used by children or untrained person.
- For more query or doubts kindly contact for Service Team/Dealer





# GP-4019BP-P BRUSH CUTTER BACK PACK

IMPORTERS & DISTRIBUTORS

**RATNAGIRI IMPEX PVT LTD**

Annapurna House, #1/1G, 7th Cross, New Guddadahalli

Mysore Road, Bangalore-560 026

Customer Care: 1800-425-3036

email: [info@ratnagiriimpex.com](mailto:info@ratnagiriimpex.com)

[www.ratnagiriimpex.com](http://www.ratnagiriimpex.com)



 **ratnagiri<sup>®</sup>  
impex**  
BRINGING YOU THE FUTURE... NOW

AN ISO 9001:2015 CERTIFIED COMPANY