

USER MANUAL



BRUSH CUTTER

GP-35-BC-4S



Disclaimer : Please read this User manual before operating the machine.



Dear Sir/Madam,

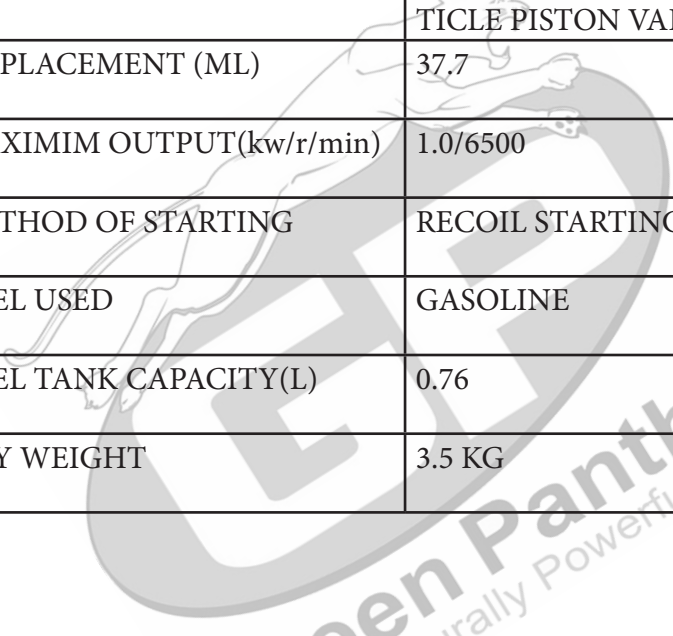
Thank you for choosing the Green Panther Product. You are the proud owner of high technology and durable machine. Trust that our dear / Franchise installed the product and explained you about the usage & service instructions. Please visit our authorised dealer for your future requirement. of other requirement of our other equipment, genuine spare, accessories and service. Service coupons are attached with this manual and you can avail free service.

About Ratnagiri

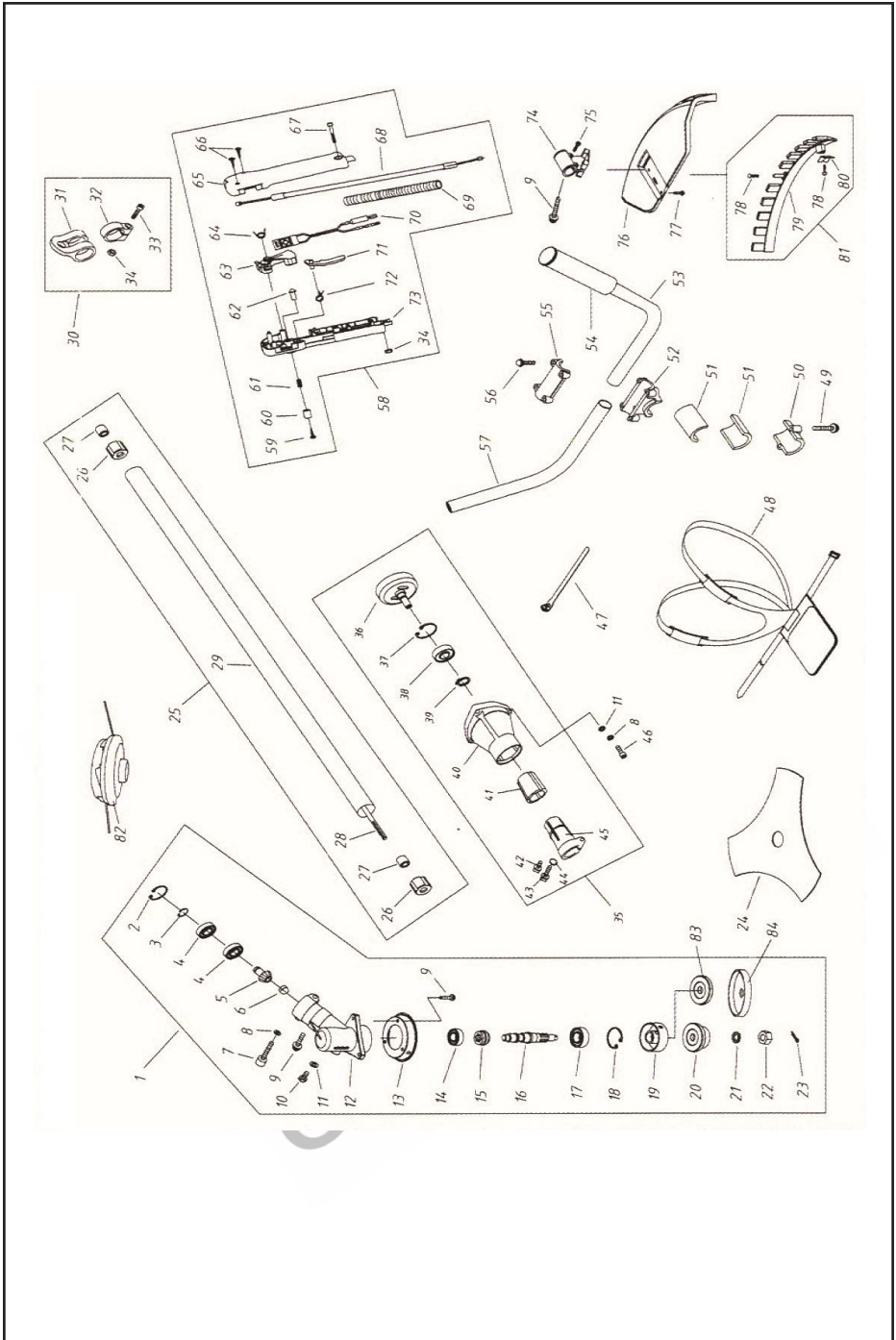
We import and market of high quality of agriculture wide range of equipments which we are selling through our authorised or dealer network . we are in their feild from past 50 years serving the former community. For further details you may please visit our website www.agrimart.in & download our AgrimartAgrimart App .

Technical specifications

MODEL	GP-35-BC-4S
TYPE OF HANDLE	SINGLE GROUP
ENGINE MODEL	AX-35
ENGINE TYPE	AIR COOLED, 4STROKE VERTICLE PISTON VALVE
DISPLACEMENT (ML)	37.7
MAXIMIM OUTPUT(kw/r/min)	1.0/6500
METHOD OF STARTING	RECOIL STARTING
FUEL USED	GASOLINE
FUEL TANK CAPACITY(L)	0.76
DRY WEIGHT	3.5 KG


Green Panther
Naturally Powerful

TRANSMISSION DIAGRAM & PART LIST OF GP-35-BC-4S BRUSH CUTTER



TRANSMISSION DIAGRAM & PART LIST OF GP-35-BC-4S BRUSH CUTTER

SL NO	PART NO	DESCRIPTION
1	GP-BC35-T01	Gear Case assy
2	GP-BC35-T02	Stop Ring
3	GP-BC35-T03	Stop Ring
4	GP-BC35-T04	Bearing
5	GP-BC35-T05	Pinion
6	GP-BC35-T06	Steel cap
7	GP-BC35-T07	Screw
8	GP-BC35-T08	washer
9	GP-BC35-T09	screw
10	GP-BC35-T10	Bolt
11	GP-BC35-T11	Washer
12	GP-BC35-T12	Gear Case
13	GP-BC35-T13	Safety Guard
14	GP-BC35-T14	Bearing
15	GP-BC35-T15	Gear
16	GP-BC35-T16	Gear Shaft
17	GP-BC35-T17	Bearing
18	GP-BC35-T18	Stop ring

TRANSMISSION DIAGRAM & PART LIST OF GP-35-BC-4S BRUSH CUTTER

19	GP-BC35-T19	Holder A
20	GP-BC35-T20	Holder B
21	GP-BC35-T21	Washer
22	GP-BC35-T22	Left Nut
23	GP-BC35-T23	Pin
24	GP-BC35-T24	Balde
25	GP-BC35-T25	Pipe Comp.
26	GP-BC35-T26	Rubber Cover
27	GP-GX35-T27	Oil Bearing
28	GP-BC35-T28	Drive shaft
29	GP-BC35-T29	Pipe
30	GP-BC35-T30	Holder Assy
31	GP-BC35-T31	Harness clamp
32	GP-BC35-T32	Clamp
33	GP-BC35-T33	Screw
34	GP-BC35-T34	Nut
35	GP-BC35-T35	Clutch comp.
36	GP-BC35-T36	Clutch Drum Comp.
37	GP-BC35-T37	Stop Ring

TRANSMISSION DIAGRAM & PART LIST OF GP-35-BC-4S BRUSH CUTTER

38	GP-BC35-T38	Bearing
39	GP-BC35-T39	Stop Ring
40	GP-BC35-T40	Linker
41	GP-BC35-T41	Rubber Cover
42	GP-BC35-T42	Screw
43	GP-BC35-T43	Screw
44	GP-BC35-T44	Washer
45	GP-BC35-T45	Joining
46	GP-BC35-T46	Screw
47	GP-BC35-T47	Wire clamp Band
48	GP-BC35-T48	Harness Assy
49	GP-BC35-T49	Bolt
50	GP-BC35-T50	Cap, Lower
51	GP-BC35-T51	Rubber washer
52	GP-BC35-T52	Bracket
53	GP-BC50-T53	Handle
54	GP-BC35-T54	Rubber Grip
55	GP-GX35-T55	Cap, Upper
56	GP-BC-35-T56	Bolt

TRANSMISSION DIAGRAM & PART LIST OF GP-35-BC-4S BRUSH CUTTER

57	GP-BC35-T57	Handle
58	GP-BC35-T58	Throttle assy
59	GP-BC35-T59	Screw
60	GP-BC35-T60	Button
61	GP-BC35-T61	Spring
62	GP-BC35-T62	Lock pin
63	GP-BC35-T63	Handgrip
64	GP-BC35-T64	Spring
65	GP-BC35-T65	Box, Right
66	GP-BC35-T66	Screw
67	GP-BC35-T67	Screw
68	GP-BC35-T68	Cable comp.
69	GP-BC35-T69	Tube
70	GP-BC35-T70	Stop Button comp.
71	GP-BC35-T71	Handgrip
72	GP-BC35-T72	Spring
73	GP-BC35-T73	Box, Left
74	GP-BC35-T74	Bracket
75	GP-BC35-T75	Screw

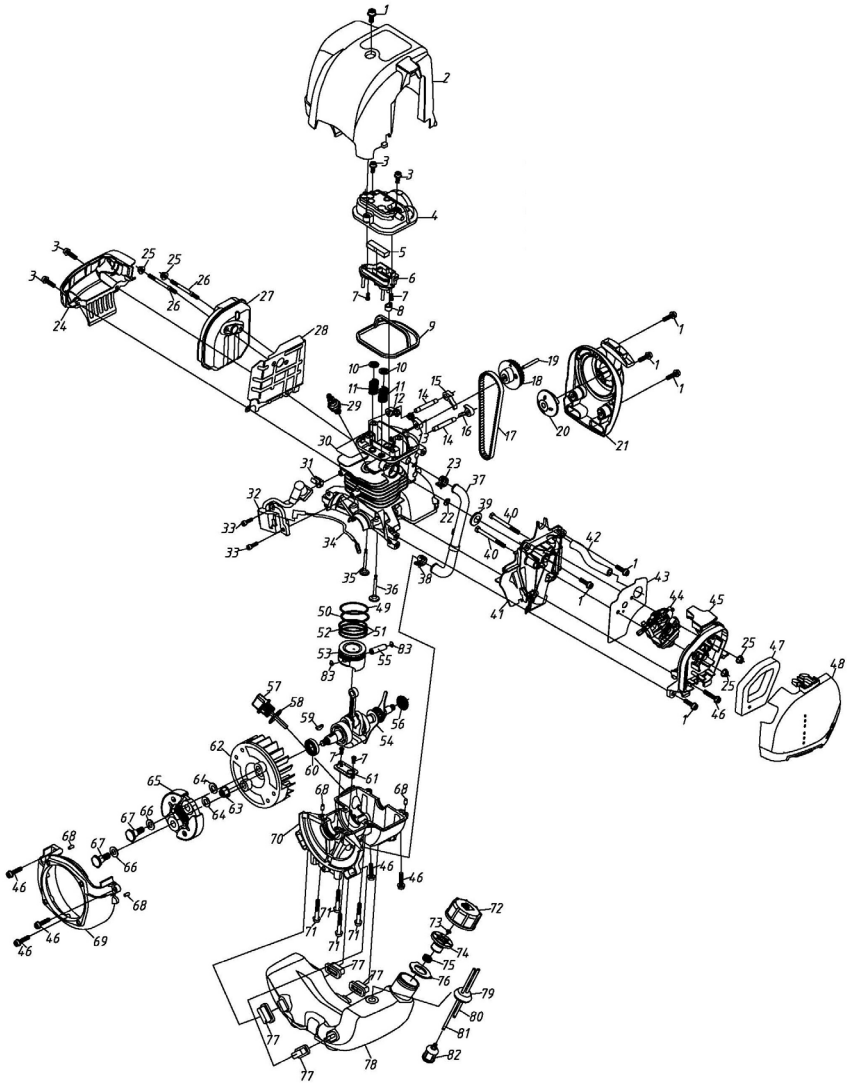
TRANSMISSION DIAGRAM & PART LIST OF GP-35-BC-4S BRUSH CUTTER

76	GP-BC35-T76	Safety Guard
77	GP-BC35-T77	Screw
78	GP-GX35-T78	Screw
79	GP-BC35-T79	Guard
80	GP-BC35-T80	Blade
81	GP-BC35-T81	Guard Asssy
82	GP-BC35-T82	Nylon Cutter head
83	GP-BC35-T83	Holder
84	GP-BC35-T84	Shield



Green Panther
Naturally Powerful

ENGINE DIAGRAM & PART LIST OF GP-35-BC-4S BRUSH CUTTER



ENGINE DIAGRAM & PART LIST OF GP-35-BC-4S BRUSH CUTTER

SL NO	PART NO	DESCRIPTION
1	GP-AX35-E01	SCREW
2	GP-AX35-E02	CYLINDER COVER
3	GP-AX35-E03	Screw
4	GP-AX35-E04	GP-AX35-E04
5	GP-AX35-E05	Oil Gas Seperator
6	GP-AX35-E06	Inside Cover
7	GP-AX35-E07	Screw
8	GP-AX35-E08	Rubber Cushion
9	GP-AX35-E09	Rubber Cushion
10	GP-AX35-E10	Valve spring seat
11	GP-AX35-E11	Valve spring
12	GP-AX35-E12	Exhaust valve Rocker
13	GP-AX35-E13	Inlet valve rocker
14	GP-AX35-E14	Rocker Pin
15	GP-AX35-E15	Exhaust rocker
16	GP-AX35-E16	inlet rocker
17	GP-AX35-E17	Synchronus belt
18	GP-AX35-E18	Cam Wheel
19	GP-AX35-E19	Camshaft

ENGINE DIAGRAM & PART LIST OF GP-35-BC-4S BRUSH CUTTER

20	GP-AX35-E20	Start reel
21	GP-AX35-E21	starter
22	GP-AX35-E22	Gasket
23	GP-AX35-E23	Holding - down clip
24	GP-AX35-E24	Muffler baffle
25	GP-AX35-E25	Nut
26	GP-AX35-E26	Double edged bolt
27	GP-AX35-E27	Muffler
28	GP-AX35-E28	Muffler baffle
29	GP-AX35-E29	Spark plug
30	GP-AX35-E30	Cylinder
31	GP-AX35-E31	Fastener
32	GP-AX35-E32	Ignition starter
33	GP-AX35-E33	Screw
34	GP-AX35-E34	Stopping wire
35	GP-AX35-E35	Exhaust valve
36	GP-AX35-E36	Inlet valve
37	GP-AX35-E37	Pressure pipe
38	GP-AX35-E38	Holding down clip
39	GP-AX35-E39	O- seal ring

ENGINE DIAGRAM & PART LIST OF GP-35-BC-4S BRUSH CUTTER

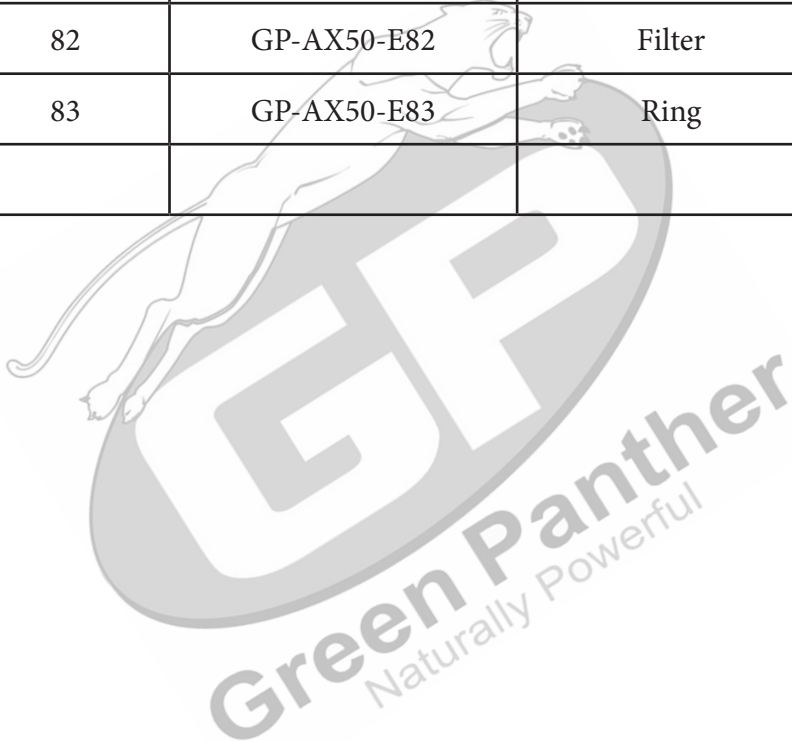
40	GP-AX35-E40	Screw
41	GP-AX35-E41	Admitting pipe
42	GP-AX35-E42	Blast pipe
43	GP-AX35-E43	Gasket
44	GP-AX35-E44	carburetor
45	GP-AX35-E45	Cleaner inside cover
46	GP-AX35-E46	screw
47	GP-AX35-E47	Filter net
48	GP-AX35-E48	Air filter cover
49	GP-AX35-E49	Piston ring
50	GP-AX35-E50	Piston Ring
51	GP-AX35-E51	Oil scraper ring
52	GP-AX35-E52	Liner Ring
53	GP-AX35-E53	Piston
54	GP-AX35-E54	Crankshaft
55	GP-AX35-E55	Piston pin
56	GP-AX35-E56	Oil seal

ENGINE DIAGRAM & PART LIST OF GP-35-BC-4S BRUSH CUTTER

57	GP-AX50-E57	Oil scale
58	GP-AX50-E58	O- seal ring
59	GP-AX50-E59	Key
60	GP-AX50-E60	Oil seal
61	GP-AX50-E61	Reed Valve
62	GP-AX50-E62	magneto rotor comp.
63	GP-AX50-E63	Nut
64	GP-AX50-E64	washer
65	GP-AX50-E65	Clutch
66	GP-AX50-E66	washer
67	GP-AX50-E67	Screw pin
68	GP-AX50-E68	Pin
69	GP-AX50-E69	magneto cover
70	GP-AX50-E70	Crank case
71	GP-AX50-E71	Screw
72	GP-AX50-E72	Fuel tank lid
73	GP-AX50-E73	Air admission valve
74	GP-AX50-E74	Inside cover
75	GP-AX50-E75	Shell cover

ENGINE DIAGRAM & PART LIST OF GP-35-BC-4S BRUSH CUTTER

76	GP-AX50-E76	Air proof Gasket
77	GP-AX50-E77	Rubber Cushion
78	GP-AX50-E78	Fuel Tank
79	GP-AX50-E79	Plug
80	GP-AX50-E80	Fuel return pipe
81	GP-AX50-E81	Fuel suction pipe
82	GP-AX50-E82	Filter
83	GP-AX50-E83	Ring



1st Free Service Coupon

ISO 9001-2015
CERTIFIED COMPANY

FREE SERVICE COUPON (30 Days / 30 hrs (Which ever is earlier))

Model
GP-35-BC-4S BRUSH CUTTER

Serial Number

PDI Date

Service No.

Purchase bill no. Date

Dealer's Office Seal & Signature

Customer Signature.....

Conditions: Operations listed have been performed to my entire satisfaction without any labour charges. Only consumables were charged.

WARRANTY AND FREE SERVICE COUPON

agriculture | horticulture | sericulture | plantations | forest | garden | healthcare

2nd Free Service Coupon

ISO 9001-2015
CERTIFIED COMPANY

FREE SERVICE COUPON (60 Days / 60 hrs (Which ever is earlier))

Model
GP-BC-35-4S BRUSH CUTTER

Serial Number

PDI Date

Service No.

Purchase bill no. Date

Dealer's Office Seal & Signature

Customer Signature.....

Conditions: Operations listed have been performed to my entire satisfaction without any labour charges. Only consumables were charged.

WARRANTY AND FREE SERVICE COUPON

agriculture | horticulture | sericulture | plantations | forest | garden | healthcare

3rd Free Service Coupon

ISO 9001-2015
CERTIFIED COMPANY

FREE SERVICE COUPON (90 Days / 120 hrs (Which ever is earlier))

Model
GP-35-BC-4S BRUSH CUTTER

Serial Number

PDI Date

Service No.

Purchase bill no. Date

Dealer's Office Seal & Signature

Customer Signature.....

Conditions: Operations listed have been performed to my entire satisfaction without any labour charges. Only consumables were charged.

WARRANTY AND FREE SERVICE COUPON

agriculture | horticulture | sericulture | plantations | forest | garden | healthcare

1. **LIMITED WARRANTY PERIOD** : For a period of six months from the date of Sale / delivery of the product which ever is earlier. 2. **LIMITED WARRANTY OBLIGATION** : Replacement of defective part(s) by authorized dealer are free of charges. If found defective by reasons of defective material / poor workmanship, parts will be replaced and there will be no value re-imbusement. 3. **TERMS & CONDITIONS** : a. Claims under warranty will be accepted on submission of Warranty Card duly filled and stamped by authorized dealer together with the original purchase document. : b. Shipping / transportation / Incidental charges incurred in replacing defective parts under warranty shall be borne by the purchaser.

WARRANTY null & void if

- (i) Lack of maintenance, (ii) Incorrect use of the machine or tampering, (iii) Use of non-genuine spare parts, (iv) Usage of acids, solvents, or any flammable materials, (v) Non-usage of filter water / clear water / soft water & using water above 40°C temperature, (vi) While using the pressure washers to draw water which is contaminated with dust & solvents (eg. paint thinners, gasoline, oil, etc.), (vii) Repair done by unauthorized service people, (viii) Those parts subject to wear & tear due to normal operations and plastic parts, rubber items etc, (ix) Loose connections, faulty electrical fixtures & fluctuations in power supply.
4. Should any failure occur during or after the warranty period, customer does not have the right to interrupt payment / price discount.
5. Incidental or consequential damages like inconvenience commercial loss, loss of tie, mental agony etc.
6. Loss of any nature due to operation or non-operation is not covered under warranty.
7. All free service are at Dealer's service point only.
8. Warranty ceases if service is not done periodically.
9. The attached card should be completed and returned to Ratnagiri Impex Pvt. Ltd. for registration immediately after sale / delivery.
10. The warranty is void unless you register the warranty card with Ratnagiri Impex Pvt. Ltd.
11. The decision of Ratnagiri Impex Pvt. Ltd., in settling the warranty is final in all respects.
12. All disputes are subject to Bangalore Courts Jurisdiction

-
1. **LIMITED WARRANTY PERIOD** : For a period of six months from the date of Sale / delivery of the product which ever is earlier. 2. **LIMITED WARRANTY OBLIGATION** : Replacement of defective part(s) by authorized dealer are free of charges. If found defective by reasons of defective material / poor workmanship, parts will be replaced and there will be no value re-imbusement. 3. **TERMS & CONDITIONS** : a. Claims under warranty will be accepted on submission of Warranty Card duly filled and stamped by authorized dealer together with the original purchase document. : b. Shipping / transportation / Incidental charges incurred in replacing defective parts under warranty shall be borne by the purchaser.

WARRANTY null & void if

- (i) Lack of maintenance, (ii) Incorrect use of the machine or tampering, (iii) Use of non-genuine spare parts, (iv) Usage of acids, solvents, or any flammable materials, (v) Non-usage of filter water / clear water / soft water & using water above 40°C temperature, (vi) While using the pressure washers to draw water which is contaminated with dust & solvents (eg. paint thinners, gasoline, oil, etc.), (vii) Repair done by unauthorized service people, (viii) Those parts subject to wear & tear due to normal operations and plastic parts, rubber items etc, (ix) Loose connections, faulty electrical fixtures & fluctuations in power supply.
4. Should any failure occur during or after the warranty period, customer does not have the right to interrupt payment / price discount.
5. Incidental or consequential damages like inconvenience commercial loss, loss of tie, mental agony etc.
6. Loss of any nature due to operation or non-operation is not covered under warranty.
7. All free service are at Dealer's service point only.
8. Warranty ceases if service is not done periodically.
9. The attached card should be completed and returned to Ratnagiri Impex Pvt. Ltd. for registration immediately after sale / delivery.
10. The warranty is void unless you register the warranty card with Ratnagiri Impex Pvt. Ltd.
11. The decision of Ratnagiri Impex Pvt. Ltd., in settling the warranty is final in all respects.
12. All disputes are subject to Bangalore Courts Jurisdiction

-
1. **LIMITED WARRANTY PERIOD** : For a period of six months from the date of Sale / delivery of the product which ever is earlier. 2. **LIMITED WARRANTY OBLIGATION** : Replacement of defective part(s) by authorized dealer are free of charges. If found defective by reasons of defective material / poor workmanship, parts will be replaced and there will be no value re-imbusement. 3. **TERMS & CONDITIONS** : a. Claims under warranty will be accepted on submission of Warranty Card duly filled and stamped by authorized dealer together with the original purchase document. : b. Shipping / transportation / Incidental charges incurred in replacing defective parts under warranty shall be borne by the purchaser.

WARRANTY null & void if

- (i) Lack of maintenance, (ii) Incorrect use of the machine or tampering, (iii) Use of non-genuine spare parts, (iv) Usage of acids, solvents, or any flammable materials, (v) Non-usage of filter water / clear water / soft water & using water above 40°C temperature, (vi) While using the pressure washers to draw water which is contaminated with dust & solvents (eg. paint thinners, gasoline, oil, etc.), (vii) Repair done by unauthorized service people, (viii) Those parts subject to wear & tear due to normal operations and plastic parts, rubber items etc, (ix) Loose connections, faulty electrical fixtures & fluctuations in power supply.
4. Should any failure occur during or after the warranty period, customer does not have the right to interrupt payment / price discount.
5. Incidental or consequential damages like inconvenience commercial loss, loss of tie, mental agony etc.
6. Loss of any nature due to operation or non-operation is not covered under warranty.
7. All free service are at Dealer's service point only.
8. Warranty ceases if service is not done periodically.
9. The attached card should be completed and returned to Ratnagiri Impex Pvt. Ltd. for registration immediately after sale / delivery.
10. The warranty is void unless you register the warranty card with Ratnagiri Impex Pvt. Ltd.
11. The decision of Ratnagiri Impex Pvt. Ltd., in settling the warranty is final in all respects.
12. All disputes are subject to Bangalore Courts Jurisdiction

Warranty Card

CUSTOMER COPY



Purchaser's Name & Address

Date of Delivery

Product Name

GP-35-BC-4S BRUSH CUTTER

Dealer's Office Seal

Product Serial No.

Dealer Sign _____

Customer Sign. _____

Invoice / DN No.

I/We accept the terms and conditions of Warranty as in the Warranty Card.

Warranty Card

DEALER'S COPY

Purchaser's Name & Address

Date of Delivery

Product Name

GP-35-BC-4S- BRUSH CUTTER

Dealer's Office Seal

Product Serial No.

Dealer Sign _____

Customer Sign. _____

Invoice / DN No.

I/We accept the terms and conditions of Warranty as in the Warranty Card.

Warranty Card

COMPANY COPY

Purchaser's Name & Address

Date of Delivery

Product Name

GP-35-BC-4S BRUSH CUTTER

Dealer's Office Seal

Product Serial No.

Dealer Sign _____

Customer Sign. _____

Invoice / DN No.

I/We accept the terms and conditions of Warranty as in the Warranty Card.

Do's & Don'ts

- Always read the instruction manual supplied along with the equipments and understand the correct installation and operating procedures before attempting to use the equipments.
- It is important to use the personal protection equipments such as head helmet with visor, ear defenders, goggles, safety gloves, cut resistant shoes, trousers and jackets while operating potentially dangerous machines.
- Avoid untrained persons using the equipments. Children must not be allowed to handle these equipments.
- Always use genuine spares and accessories in repairs and usage to derive maximum life of the equipments.
- Always keep the equipments in good working condition to minimise loss of output as well as to reduce the pollution and save the environment.
- Do not use the machine within range of persons unless they wear protective clothing.
- Do not operate the machine when fatigued or under the influence of alcohol or drugs.
- For more query kindly contact for our Service Center/Dealer/ franchise



Green Panther
Naturally Powerful

GREEN PANTHER
GP-35-BC-4S
BRUSH CUTTER

Imported & Marketed by:
RATNAGIRI IMPEX PVT LTD
Annapurna House, #1/1G, 7th Cross, New Guddadahalli
Mysore Road, Bangalore-560 026
Customer Care: 1800-425-3036
email: info@ratnagiriimpex.com



Marketed by:
**ratnagiri[®]
impex**
BRINGING YOU THE FUTURE... NOW