



Green Panther
Naturally Powerful

GP-TFF-256 **Fogger**



USER MANUAL



Professional Fogger

Note: Please read the following instructions before use. This book contains important information on SAFETY, ASSEMBLY, OPERATION & DISCLAIMER: DUE TO CONSTANT UPGRADATION, FEATURES AND SPECIFICATIONS ARE SUBJECT TO CHANGE WITHOUT NOTICE

MANUAL CONTENTS

Features

Warning

Main Technical Data

Part Names

How to Use

Safe use of the Fogger

Cleaning and Storage

Possible Problems and remedies

Diagram

Parts List



FEATURES

- The right machine for agricultural and forestry insect control and for the prevention of epidemic disease.
- Simplified design for easy operation and maintenance.
- Stainless steel body to prevent corrosion.
- Light in weight and balanced.
- Strong power burst, long spray range, high work efficiency.

WARNING

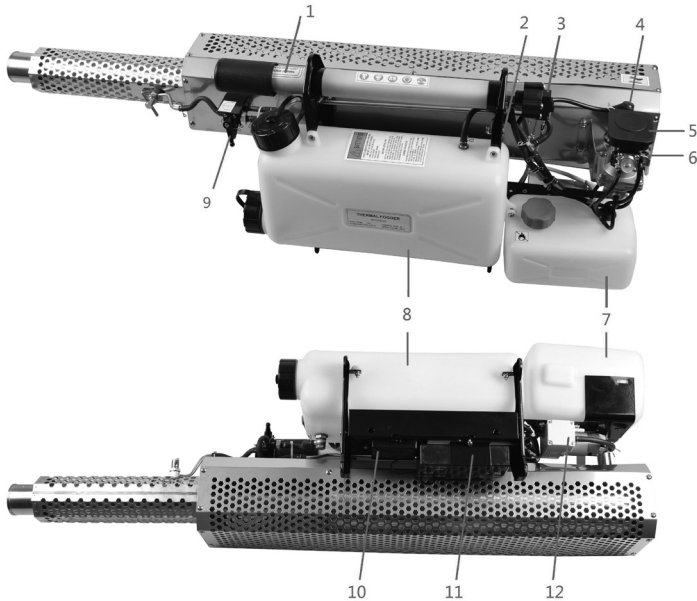
1. In the use and handling of chemicals, the operator must comply with the safety operation instructions provided by the chemical manufacturer to avoid damage to the human being and environment.
2. Always wear protection suit when handling chemicals.
3. Maintenance and replenishment of chemicals must be done when the fogger machine in cool state.
4. Do not enter into the room directly that has been sprayed with chemicals.
5. Check the fogger before each operation.
6. Do not lay the fogger on its side.
7. Do not operate close by the fire.
8. Do not refuel close by the fire.
9. Never refuel while engine working.
10. Fogger should not be operated close to person (a radius of 3 meters).
11. Do not touch the fogger within about 10 minutes after usage.
12. It is advisable to check the battery frequently.



MAIN TECHNICAL DATA

Model	GP-TFF256
Chemical Tank Capacity (L)	6
Fuel Tank Capacity (L)	1.2
Fuel Consumption (L/H)	2.0
Fogging Capacity (L/H)	25
Starting method	Manual & electric
Battery	Dry battery 3V, Storage battery 6V 3.3Ah.
Net Weight (Kg)	9.7
Dimension (mm)	1050x300x335

PART NAMES



1. Manual air pump 2. Electric start button 3. Pressure switch 4. Spark plug 5. Air filter
6. Carburetor 7. Fuel tank 8. Chemical tank 9. Chemical cock 10. Dry battery
11. Storage battery 12. Electric air pump



HOW TO USE

1. PREPARATION:

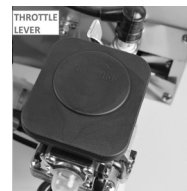
Check and make sure all the electric circuits and pipe connections are in good status. Put the batteries into the battery box. Pull the air pump handle and pump until the pressure is formed and the spark plug gives ignition noise. Set the 3-way chemical cock on the OFF position. Then fill gasoline into the fuel tank and fill chemical and smoke agent into the chemical tank. Make sure the tank lids are tightly sealed.



2. HOW TO START :

(I) Electric starting:

- a) Firstly press the primer bulb several times until the observation of gasoline coming inside and flowing to the carburetor base from the overflow hose.
- b) Adjust the throttle valve to "ON" direction to the 3/4 position.
- c) Press the start button and keep for several seconds. During this time, according to the state of engine sound, the throttle lever can be adjusted until you can hear crisp and stable sound. Release the button after successfully started and adjust the throttle valve fully opened.
- d) After running for 20 seconds (should not be more than 60 seconds to avoid machine damage because of heat), open the chemical cock to "ON" position and start to spray.



(II) Manual starting:

- a), b) same as above in (I).
- c) Pull the pump handle and pump evenly (one back and forth motion takes about 1 second), when you hear the pop voice, continue pumping until the engine runs continuously (if after repeated times still not activated, you can adjust the throttle valve slightly while pumping), then return the pump handle to its initial position. Adjust the throttle valve fully opened.
- d) same as above in (I).

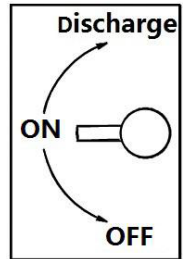


3. HOW TO FOG:

After the engine running is stable, fogging must be done immediately, do not let the engine alive for more than 1 minute without fogging. Carry the machine on your shoulder and grasp the handle tightly. Open the chemical cock to the position "ON" slowly. A few seconds later fog will be sprayed out. Adjust discharge volume as needed. Wherever possible keep the machine to work horizontally. While tilting spray is needed, do not tilt the machine too much. Too big tilting angle will cause the fuel filter coming out of the fuel and thus causing engine stop.

If fogging needs to be stopped temporarily during working, turn the chemical cock to the position "Discharge" and when spray again, turn the cock to the position "ON" for continuing.

After the fogging is complete or the chemical tank is empty, let the engine rest for 5-10 minutes to cool down first before refill the chemical.



4. HOW TO STOP THE MACHINE:

When stop fogging, make sure to turn the chemical cock to the position "Discharge" firstly so the remaining chemical in the pipe can be discharged out completely. Wait until there is absolutely no smoke is formed and then close the throttle valve to stop the engine. And lastly, turn the chemical cock to the position "OFF".



SAFE USE OF THE FOGGER

1. To avoid burning of hand or clothes, while the engine is running, do not touch the cooling pipe or the end part of the combustion chamber.
2. When fogging, do not point the machine too closely to the plant or other objects. Do not let the cooling pipe touches objects that are flammable. It is better to keep a distance of 2 meters. Do not do fogging in flammable locations.
3. Do not use wood pulp or wood sticks or other flammable objects to put into combustion chamber because it makes burst of sparks that can cause burns to the people around it or even cause a fire.
4. Never refuel while the engine is working. When refueling is needed, turn off the engine first and then wait for about 7-10 minutes until the engine cools down. Recommend to fill chemical firstly before fuel filling. If the engine is still hot, fuel spills could result in fire.

CLEANING AND STORAGE

1. After the fogger is used, drain out the chemical that still remains in the chemical tank. Fill in 0.5 liter clean diesel into the tank, and shake and rinse.
2. The electric circuit must always be clean and dry, not exposed to liquid chemical or water.
3. Turn on the machine once again to spray out the diesel so that to rinse the chemical pipe and valve.
4. After the engine is cool, clean the parts that may builds up carbon, such as intake diaphragm, spark plug, spray nozzle and etc.
5. Clean up the dust and oil stain on the surface of the machine and empty the fuel tank.
6. If the machine will be stored for a long time, empty the fuel in the tank, take out the batteries from the battery box, put the machine into a plastic bag and keep in the cool and dry place.



POSSIBLE PROBLEMS AND REMEDIES

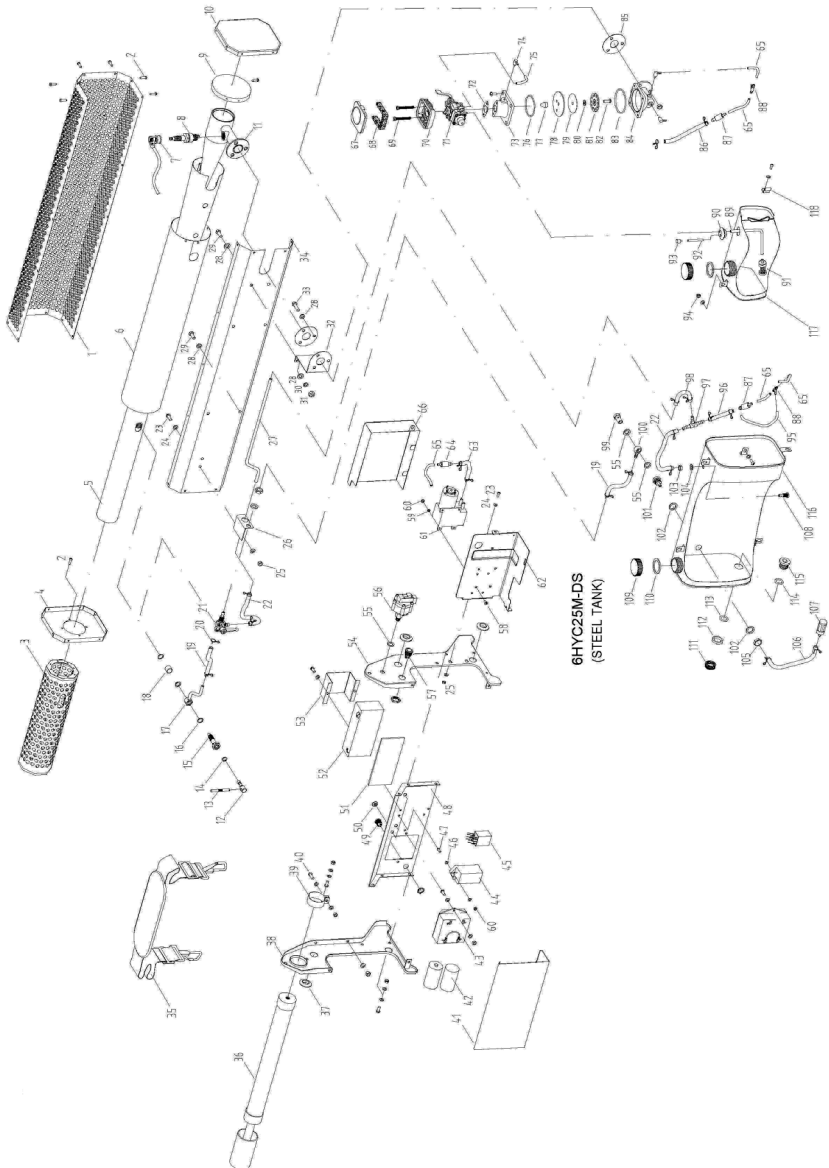
PROBLEM	INDICATION	REASON	HOW TO RESOLVE
No Ignition	no engine sound when starting	<ul style="list-style-type: none"> • battery box is not closed tightly. • low capacity of battery. • incorrect battery position. • wire falling off in electric circuit (for example, from spark plug) • spark plug failed or incorrect gap. 	<ul style="list-style-type: none"> • close the battery box tightly. • change new batteries. • fix the battery position correctly. • inspect and repair electric circuit. • replace new spark plug or adjust the gap to be 1.5-2mm.
Normal ignition but can not start	fuel is not sucked	<ul style="list-style-type: none"> • fuel suction hose air leaked. • fuel filter is clogged. 	<ul style="list-style-type: none"> • inspect and replace. • clean the fuel filter.
	start again, failed again	carburetor flooding.	close throttle, pump or press start button repeatedly to fire up the extra fuel until hear the beeping engine sound, then restart normally.
	air leakage from manual air pump	while pumping feels very light	replace the pump leather cup or repair the leaky section.
	no or less air supplied by electric air pump	<ul style="list-style-type: none"> • electric wires poor contact. • pipe connections air leaking. • storage battery low voltage. 	<ul style="list-style-type: none"> • check and connect well. • check and connect well. • recharge the battery.
	wrong stop of last use	closing throttle first, closing chemical cock later, massive liquid enters into combustion chamber, causing failure of start.	drain out the liquid chemical from the combustion chamber and restart.
	less power	<ul style="list-style-type: none"> • spray mouth of combustion chamber containing much carbon crust. • diaphragm containing oil dirt or deformed or damaged. 	<p>use a carbon brush to clean the carbon crust.</p> <p>clean the diaphragm or replace a new one.</p>



The machine stops suddenly	fuel empty	fuel used up.	refuel.
	diaphragm air leakage	diaphragm deformed or damaged.	clean or replace diaphragm.
	fuel hose clogged	clogged suction filter	clean the filter and fuel tank.
	carburetor air intake blocked	air filter sponge or dirt is sucked in.	reset the sponge or clear dirt.
Capacity of fog is reduced	lower engine sound and insufficient power	too much carbon crust at the spray mouth of combustion chamber or nozzle body hole.	clean the carbon crust using a brush.
	air leak from the chemical tank lid	chemical tank lid is less tight	tighten the chemical tank lid.
	chemical cock or pipe connection leaking	connection is less tight after long usage.	tighten the bolts and nuts of cock and connection.
	nozzle hole clogged partially	oil dirt and impurities deposited after long usage.	clean nozzle thoroughly.
	less pressure in the chemical tank	the one-way valve not working well.	clean or replace.



GP-TFF-256 FOGGER DIAGRAM



PARTS LIST OF GP-TFF-256 FOGGER

SL.NO.	PART NO.	DESCRIPTION
1	GP-TFF-256-01	OUTER WIRE GUARD
2	GP-TFF-256-02	SCREW
3	GP-TFF-256-03	FRONT WIRE GUARD ASSY
4	GP-TFF-256-04	FRONT HOLDER, OUTER WIRE GUARD
5	GP-TFF-256-05	AIR DUCT
6	GP-TFF-256-06	AIR DUCT COVER
7	GP-TFF-256-07	SPARK PLUG CAP
8	GP-TFF-256-08	SPARK PLUG
9	GP-TFF-256-09	BACK PLATE
10	GP-TFF-256-10	BACK HOLDER, OUTER WIRE GUARD
11	GP-TFF-256-11	COMBUSTION CHAMBER
12	GP-TFF-256-12	NOZZLE CORE
13	GP-TFF-256-13	METAL ROD
14	GP-TFF-256-14	BRASS GASKET
15	GP-TFF-256-15	NOZZLE BODY
16	GP-TFF-256-16	BRASS GASKET
17	GP-TFF-256-17	CHEMICAL DISCHARGE TUBE
18	GP-TFF-256-18	CHEMICAL DISCHARGE COVER
19	GP-TFF-256-19	FLEXIBLE HOSE
20	GP-TFF-256-20	HOSE CLAMP 9
21	GP-TFF-256-21	THREE WAY CHEMICAL COCK
22	GP-TFF-256-22	FLEXIBLE HOSE
23	GP-TFF-256-23	SCREW M5X12
24	GP-TFF-256-24	WASHER 5
25	GP-TFF-256-25	NUT M5
26	GP-TFF-256-26	FIXING PLATE
27	GP-TFF-256-27	AIR DISCHARGE TUBE
28	GP-TFF-256-28	WASHER 6
29	GP-TFF-256-29	BOLT M6X12



PARTS LIST OF GP-TFF-256 FOGGER

30	GP-TFF-256-30	SPRING WASHER 6
31	GP-TFF-256-31	NUT M6
32	GP-TFF-256-32	FIXING PLATE
33	GP-TFF-256-33	BOLT M6X20
34	GP-TFF-256-34	OUTER WIRE FIX HOLDER
35	GP-TFF-256-35	CARRYING STRAP ASSY
36	GP-TFF-256-36	MANUAL AIR PUMP ASSY.
37	GP-TFF-256-37	CABLE CLIP
38	GP-TFF-256-38	LEFT SUPPORT
39	GP-TFF-256-39	HOLDER,MANUAL AIR PUMP
40	GP-TFF-256-40	SCREW M5X16
41	GP-TFF-256-41	DUST-PROOF COVER
42	GP-TFF-256-42	BATTERY 1.5V
43	GP-TFF-256-43	BATTERY HOLDER
44	GP-TFF-256-44	IGNITION COIL
45	GP-TFF-256-45	RELAY ASSY
46	GP-TFF-256-46	WASHER 4
47	GP-TFF-256-47	SCREW M4X16
48	GP-TFF-256-48	PLATE
49	GP-TFF-256-49	CHARGING SOCKET
50	GP-TFF-256-50	CABLE CLIP
51	GP-TFF-256-51	SPONGE GASKET
52	GP-TFF-256-52	STORAGE BATTERY (6v-3.3AH)
53	GP-TFF-256-53	BATTERY GUARD
54	GP-TFF-256-54	RIGHT SUPPORT
55	GP-TFF-256-55	GASKET
56	GP-TFF-256-56	PRESSURE SWITCH
57	GP-TFF-256-57	BUTTON SWITCH
58	GP-TFF-256-58	SCREW M4X10
59	GP-TFF-256-59	SPRING WASHER 4



PARTS LIST OF GP-TFF-256 FOGGER

60	GP-TFF-256-60	NUT M4
61	GP-TFF-256-61	ELECTRIC AIR PUMP
62	GP-TFF-256-62	FUEL TANK BOARD
63	GP-TFF-256-63	FLEXIBLE HOSE
64	GP-TFF-256-64	ONE WAY VALVE (BIG TO SMALL)
65	GP-TFF-256-65	FLEXIBLE HOSE
66	GP-TFF-256-66	CIRCUITS COVER
67	GP-TFF-256-67	AIR FILTER COVER
68	GP-TFF-256-68	AIR FILTER ELEMENT
69	GP-TFF-256-69	SCREW M5X40
70	GP-TFF-256-70	AIR FILTER BASE
71	GP-TFF-256-71	CARBURETOR
72	GP-TFF-256-72	GASKET
73	GP-TFF-256-73	CARBURETOR CONNECTOR
74	GP-TFF-256-74	HOSE FITTING
75	GP-TFF-256-75	FLEXIBLE HOSE
76	GP-TFF-256-76	O-RING 50x2.4
77	GP-TFF-256-77	GUIDE COLUMN
78	GP-TFF-256-78	SUCTION BOARD
79	GP-TFF-256-79	DIAPHRAGM
80	GP-TFF-256-80	WASHER
81	GP-TFF-256-81	SUCTION BACK BOARD
82	GP-TFF-256-82	SCREW M6X12
83	GP-TFF-256-83	O-RING 50x2.65
84	GP-TFF-256-84	CARBURETOR BASE
85	GP-TFF-256-85	CARBURETOR GASKET
86	GP-TFF-256-86	FLEXIBLE HOSE
87	GP-TFF-256-87	ONE WAY VALVE (SMALL TO BIG)
88	GP-TFF-256-88	THREE WAY CONNECTOR
89	GP-TFF-256-89	PIPE, FUEL INLET



ADDITIONAL PARTS LIST OF GP-TFF-256 FOGGER

90	GP-TFF-256-90	GROMMET
91	GP-TFF-256-91	FUEL FILTER
92	GP-TFF-256-92	AIR PIPE For 6HYC25M-DP
93	GP-TFF-256-93	TWO-WAY VALVE
94	GP-TFF-256-94	NUT M5
95	GP-TFF-256-95	FLEXIBLE HOSE
96	GP-TFF-256-96	FLEXIBLE HOSE
97	GP-TFF-256-97	THREE WAY CONNECTOR
98	GP-TFF-256-98	FLEXIBLE HOSE
99	GP-TFF-256-99	CONNECTOR SCREW
100	GP-TFF-256-100	TWO WAY CONNECTOR
101	GP-TFF-256-101	CHEMICAL OUTLET CONNECTOR
102	GP-TFF-256-102	GASKET
103	GP-TFF-256-103	AIR INTAKE NUT
104	GP-TFF-256-104	GASKET
105	GP-TFF-256-105	SPLICE NUT
106	GP-TFF-256-106	FLEXIBLE HOSE
107	GP-TFF-256-107	CHEMICAL FILTER ASSY
108	GP-TFF-256-108	AIR INTAKE CONNECTOR
STEEL TANK		
109	GP-TFF-256-109	TANK LID
110	GP-TFF-256-110	TANK LID GASKET
111	GP-TFF-256-111	DRAIN CAP
112	GP-TFF-256-112	SPLICE NUT
113	GP-TFF-256-113	O-RING 17x2.65
114	GP-TFF-256-114	O-RING 20x3.1
115	GP-TFF-256-115	DRAIN CONNECTOR
116	GP-TFF-256-116	CHEMICAL TANK
117	GP-TFF-256-117	FUEL TANK
118	GP-TFF-256-118	FIXER





1st Free Service Coupon

ISO 9001-2008
CERTIFIED COMPANY

FREE SERVICE COUPON (30 Days / 20 hrs (Which ever is earlier))

Model
GP-TFF-256 FOGGER

Serial Number

PDI Date

Service No.

Purchase bill no. Date

Dealer's Office Seal & Signature

Customer Signature.....

Conditions: Operations listed have been performed to my entire satisfaction without any labour charges. Only consumables were charged.

WARRANTY AND FREE SERVICE COUPON

Bungalow | Hotels | Gardens | Stadium | Resorts | Lawns | Parks | Golf Course

2nd Free Service Coupon

ISO 9001-2008
CERTIFIED COMPANY

FREE SERVICE COUPON (30 Days / 20 hrs (Which ever is earlier))

Model
GP-TFF-256 FOGGER

Serial Number

PDI Date

Service No.

Purchase bill no. Date

Dealer's Office Seal & Signature

Customer Signature.....

Conditions: Operations listed have been performed to my entire satisfaction without any labour charges. Only consumables were charged.

WARRANTY AND FREE SERVICE COUPON

Bungalow | Hotels | Gardens | Stadium | Resorts | Lawns | Parks | Golf Course

3rd Free Service Coupon

ISO 9001-2008
CERTIFIED COMPANY

FREE SERVICE COUPON (30 Days / 20 hrs (Which ever is earlier))

Model
GP-TFF-256 FOGGER

Serial Number

PDI Date

Service No.

Purchase bill no. Date

Dealer's Office Seal & Signature

Customer Signature.....

Conditions: Operations listed have been performed to my entire satisfaction without any labour charges. Only consumables were charged.

WARRANTY AND FREE SERVICE COUPON

Bungalow | Hotels | Gardens | Stadium | Resorts | Lawns | Parks | Golf Course



1. **LIMITED WARRANTY PERIOD** : For a period of six months from the date of Sale / delivery of the product which ever is earlier. 2. **LIMITED WARRANTY OBLIGATION** : Replacement of defective part(s) by authorized dealer are free of charges. If found defective by reasons of defective material / poor workmanship, parts will be replaced and there will be no value re-imbursalment. 3. **TERMS & CONDITIONS** : a. Claims under warranty will be accepted on submission of Warranty Card duly filled and stamped by authorized dealer together with the original purchase document. : b. Shipping / transportation / Incidental charges incurred in replacing defective parts under warranty shall be borne by the purchaser.

WARRANTY null & void if

- (i) Lack of maintenance, (ii) Incorrect use of the machine or tampering, (iii) Use of non-genuine spare parts, (iv) Usage of acids, solvents, or any flammable materials, (v) Non-usage of filter water / clear water / soft water & using water above 40°C temperature, (vi) While using the pressure washers to draw water which is contaminated with dust & solvents (eg. paint thinners, gasoline, oil, etc.), (vii) Repair done by unauthorized service people, (viii) Those parts subject to wear & tear due to normal operations and plastic parts, rubber items etc, (ix) Loose connections, faulty electrical fixtures & fluctuations in power supply.
4. Should any failure occur during or after the warranty period, customer does not have the right to interrupt payment / price discount.
 5. Incidental or consequential damages like inconvenience commercial loss, loss of tie, mental agony etc.
 6. Loss of any nature due to operation or non-operation is not covered under warranty.
 7. All free service are at Dealer's service point only.
 8. Warranty ceases if service is not done periodically.
 9. The attached card should be completed and returned to Ratnagiri Impex Pvt. Ltd. for registration immediately after sale / delivery.
 10. The warranty is void unless you register the warranty card with Ratnagiri Impex Pvt. Ltd.
 11. The decision of Ratnagiri Impex Pvt. Ltd., in settling the warranty is final in all respects.
 12. All disputes are subject to Bangalore Courts Jurisdiction

1. **LIMITED WARRANTY PERIOD** : For a period of six months from the date of Sale / delivery of the product which ever is earlier. 2. **LIMITED WARRANTY OBLIGATION** : Replacement of defective part(s) by authorized dealer are free of charges. If found defective by reasons of defective material / poor workmanship, parts will be replaced and there will be no value re-imbursalment. 3. **TERMS & CONDITIONS** : a. Claims under warranty will be accepted on submission of Warranty Card duly filled and stamped by authorized dealer together with the original purchase document. : b. Shipping / transportation / Incidental charges incurred in replacing defective parts under warranty shall be borne by the purchaser.

WARRANTY null & void if

- (i) Lack of maintenance, (ii) Incorrect use of the machine or tampering, (iii) Use of non-genuine spare parts, (iv) Usage of acids, solvents, or any flammable materials, (v) Non-usage of filter water / clear water / soft water & using water above 40°C temperature, (vi) While using the pressure washers to draw water which is contaminated with dust & solvents (eg. paint thinners, gasoline, oil, etc.), (vii) Repair done by unauthorized service people, (viii) Those parts subject to wear & tear due to normal operations and plastic parts, rubber items etc, (ix) Loose connections, faulty electrical fixtures & fluctuations in power supply.
4. Should any failure occur during or after the warranty period, customer does not have the right to interrupt payment / price discount.
 5. Incidental or consequential damages like inconvenience commercial loss, loss of tie, mental agony etc.
 6. Loss of any nature due to operation or non-operation is not covered under warranty.
 7. All free service are at Dealer's service point only.
 8. Warranty ceases if service is not done periodically.
 9. The attached card should be completed and returned to Ratnagiri Impex Pvt. Ltd. for registration immediately after sale / delivery.
 10. The warranty is void unless you register the warranty card with Ratnagiri Impex Pvt. Ltd.
 11. The decision of Ratnagiri Impex Pvt. Ltd., in settling the warranty is final in all respects.
 12. All disputes are subject to Bangalore Courts Jurisdiction

1. **LIMITED WARRANTY PERIOD** : For a period of six months from the date of Sale / delivery of the product which ever is earlier. 2. **LIMITED WARRANTY OBLIGATION** : Replacement of defective part(s) by authorized dealer are free of charges. If found defective by reasons of defective material / poor workmanship, parts will be replaced and there will be no value re-imbursalment. 3. **TERMS & CONDITIONS** : a. Claims under warranty will be accepted on submission of Warranty Card duly filled and stamped by authorized dealer together with the original purchase document. : b. Shipping / transportation / Incidental charges incurred in replacing defective parts under warranty shall be borne by the purchaser.

WARRANTY null & void if

- (i) Lack of maintenance, (ii) Incorrect use of the machine or tampering, (iii) Use of non-genuine spare parts, (iv) Usage of acids, solvents, or any flammable materials, (v) Non-usage of filter water / clear water / soft water & using water above 40°C temperature, (vi) While using the pressure washers to draw water which is contaminated with dust & solvents (eg. paint thinners, gasoline, oil, etc.), (vii) Repair done by unauthorized service people, (viii) Those parts subject to wear & tear due to normal operations and plastic parts, rubber items etc, (ix) Loose connections, faulty electrical fixtures & fluctuations in power supply.
4. Should any failure occur during or after the warranty period, customer does not have the right to interrupt payment / price discount.
 5. Incidental or consequential damages like inconvenience commercial loss, loss of tie, mental agony etc.
 6. Loss of any nature due to operation or non-operation is not covered under warranty.
 7. All free service are at Dealer's service point only.
 8. Warranty ceases if service is not done periodically.
 9. The attached card should be completed and returned to Ratnagiri Impex Pvt. Ltd. for registration immediately after sale / delivery.
 10. The warranty is void unless you register the warranty card with Ratnagiri Impex Pvt. Ltd.
 11. The decision of Ratnagiri Impex Pvt. Ltd., in settling the warranty is final in all respects.
 12. All disputes are subject to Bangalore Courts Jurisdiction

Warranty Card

CUSTOMER COPY



Purchaser's Name & Address

Product Name

GP-TFF-256 FOGGER

Product Serial No.

Invoice / DN No.

Date of Delivery

Dealer's Office Seal

Dealer Sign _____

Customer Sign. _____

I/We accept the terms and conditions of Warranty as in the Warranty Card.



Warranty Card

DEALER'S COPY

Purchaser's Name & Address

Product Name

GP-TFF-256 FOGGER

Product Serial No.

Invoice / DN No.

Date of Delivery

Dealer's Office Seal

Dealer Sign _____

Customer Sign. _____

I/We accept the terms and conditions of Warranty as in the Warranty Card.



Warranty Card

COMPANY COPY

Purchaser's Name & Address

Product Name

GP-TFF-256 FOGGER

Product Serial No.

Invoice / DN No.

Date of Delivery

Dealer's Office Seal

Dealer Sign _____

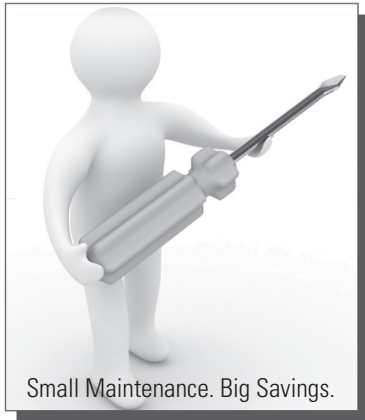
Customer Sign. _____

I/We accept the terms and conditions of Warranty as in the Warranty Card.





Small Maintenance. Big Savings.



Small Maintenance. Big Savings.



Small Maintenance. Big Savings.



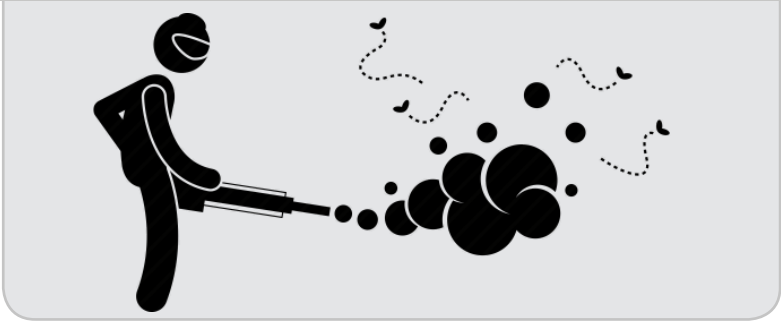
Do's & Don'ts

- Always read the instruction manual supplied along with the equipments and understand the correct installation and operating procedures before attempting to use the equipments.
- It is important to use the personal protection equipments such as head helmet with visor, ear defenders, goggles, safety gloves, cut resistant shoes, trousers and jackets while operating potentially dangerous machines.
- Avoid untrained persons using the equipments. Children must not be allowed to handle these equipments.
- Always use genuine spares and accessories in repairs and usage to derive maximum life of the equipments.
- Always keep the equipments in good working condition to minimise loss of output as well as to reduce the pollution and save the environment.
- Do not use the machine within range of persons unless they wear protective clothing.
- Do not operate the machine when fatigued or under the influence of alcohol or drugs.
- For more query kindly contact for our Service Center/Dealer/ franchise





Green Panther
Naturally Powerful



IMPORTERS & DISTRIBUTORS

RATNAGIRI IMPEX PVT LTD

Annapurna House, #1/1G, 7th Cross, New Guddadahalli

Mysore Road, Bangalore-560 026

Customer Care: 1800-425-3036

email: info@ratnagiriimpex.com

www.ratnagiriimpex.com



**ratnagiri
impex**
BRINGING YOU THE FUTURE... NOW

AN ISO 9001:2008 CERTIFIED COMPANY