

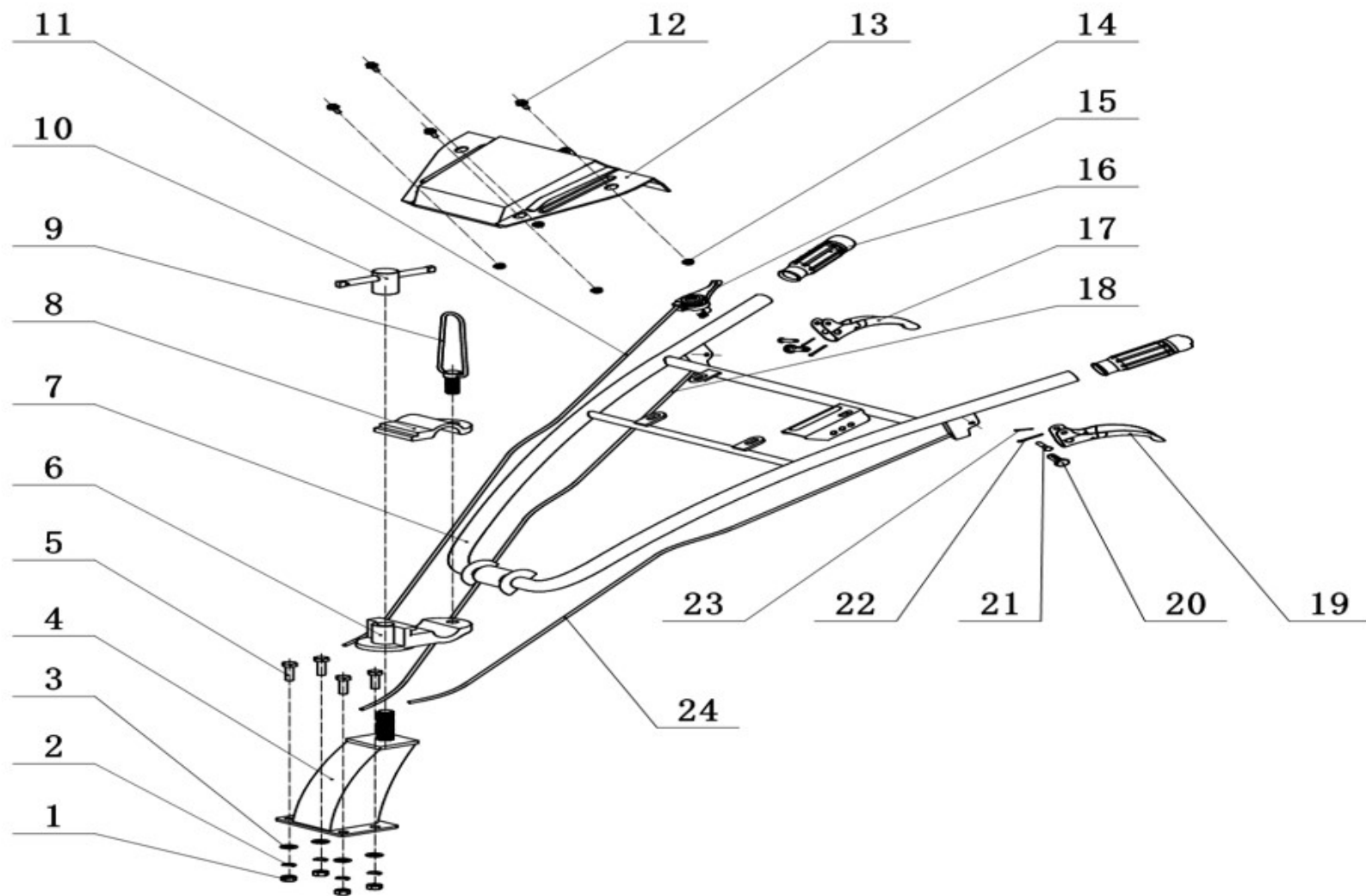
INTERCULTIVATOR / POWER WEEDER

GP-212-ICT

TRANSMISSION DIAGRAM WITH PART LIST

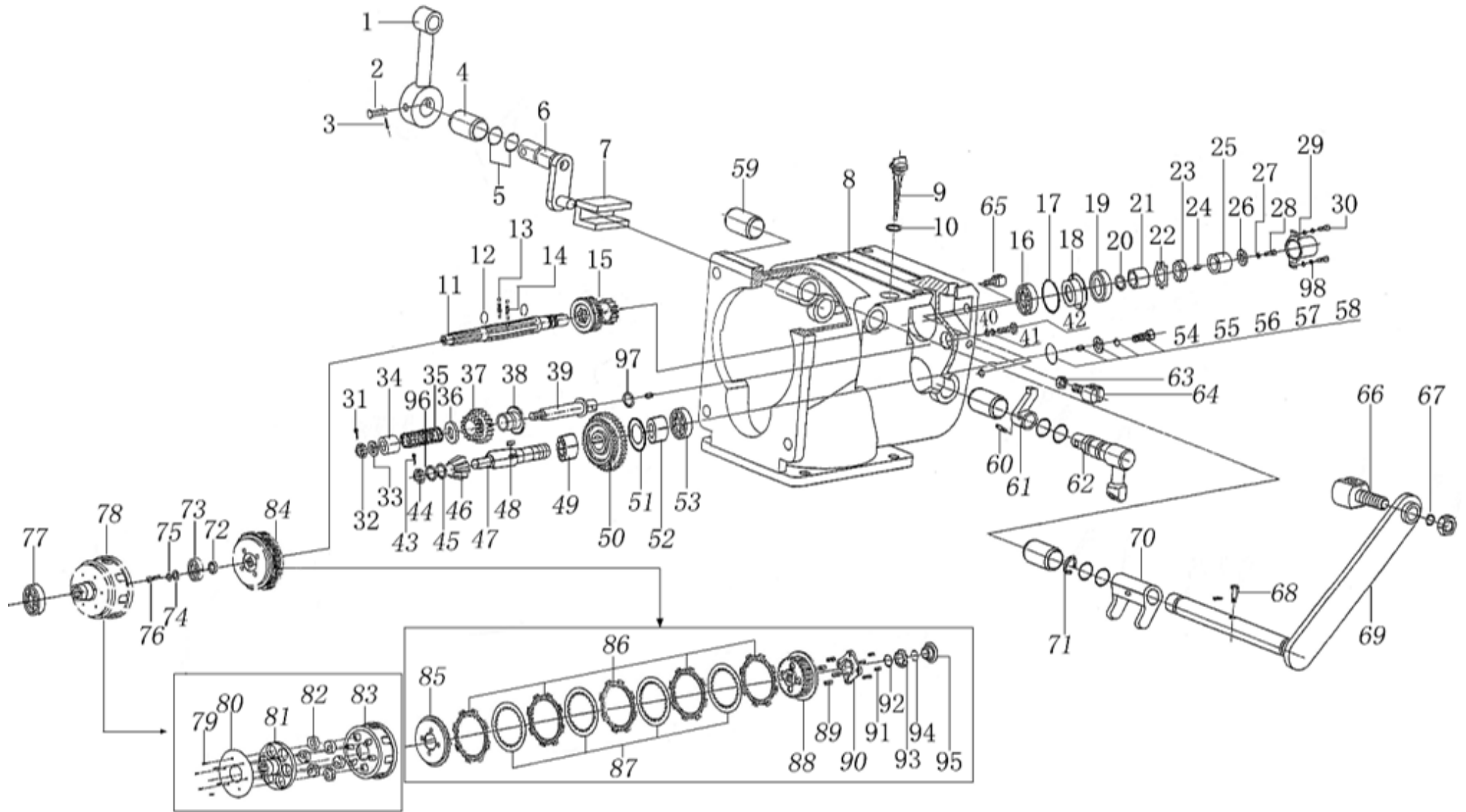


HANDLE CONTROL - A



SL NO	PART NO	DESCIPTIPON	SL NO	PART NO	DESCIPTIPON
1	GP-ICT-TA01	Nut	14	GP-ICT-TA14	Flange Nut
2	GP-ICT-TA02	Spring Washer	15	GP-ICT-TA15	Shut Down Switch Comp
3	GP-ICT-TA03	Washer	16	GP-ICT-TA16	Handle Grip
4	GP-ICT-TA04	Handle Seat Comp	17	GP-ICT-TA17	Reverse Gear Grip
5	GP-ICT-TA05	Bolt	18	GP-ICT-TA18	Reverse Gear Cable
6	GP-ICT-TA06	Tray Gear	19	GP-ICT-TA19	Clutch Grip
7	GP-ICT-TA07	Handle bar assy	20	GP-ICT-TA20	Pin
8	GP-ICT-TA08	Toothed disc pressing plate	21	GP-ICT-TA21	Pin
9	GP-ICT-TA09	High And Low Lock Comp	22	GP-ICT-TA22	Splitpin
10	GP-ICT-TA10	T Figure Lock Comp	23	GP-ICT-TA23	Splitpin
11	GP-ICT-TA11	Throttle Cable Comp	24	GP-ICT-TA24	Clutch Cable
12	GP-ICT-TA12	Flange bolts			
13	GP-ICT-TA13	Tool box			

SHIFT GEAR PARTS - B

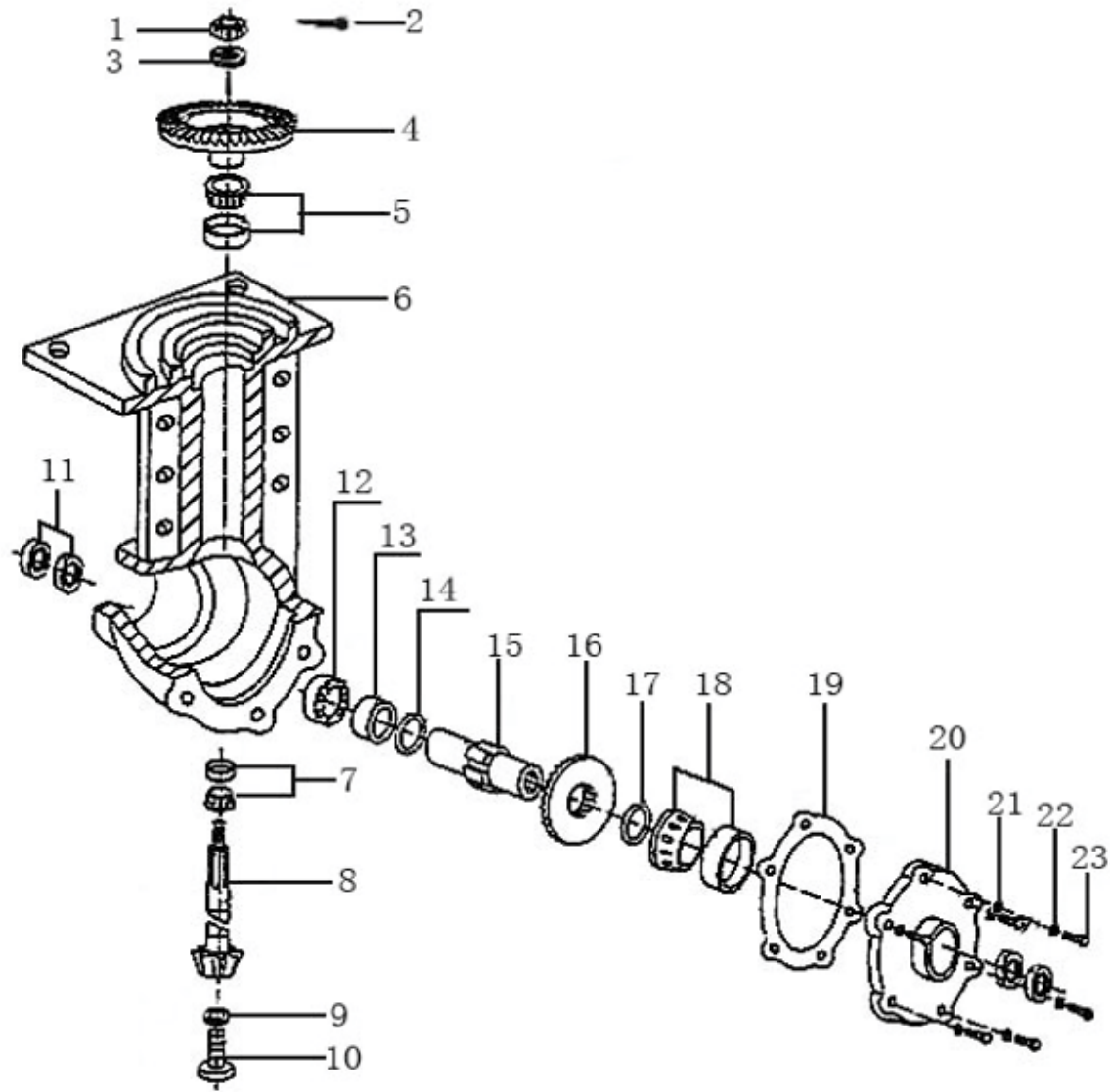


SL NO	PART NO	DESCRIPTION	SL NO	PART NO	DESCRIPTION
1	GP-ICT-TB01	Sheath, Shift rod	17	GP-ICT-TB17	O-ring
2	GP-ICT-TB02	Pin , Shift rod	18	GP-ICT-TB18	Pushing panel
3	GP-ICT-TB03	Splitpin	19	GP-ICT-TB19	Oil seal B
4	GP-ICT-TB04	Bush Shift axes	20	GP-ICT-TB20	O-ring
5	GP-ICT-TB05	O-ring	21	GP-ICT-TB21	Sheath, principal axes
6	GP-ICT-TB06	Shift axes	22	GP-ICT-TB22	Gasket
7	GP-ICT-TB07	Shift fork	23	GP-ICT-TB23	Nut
8	GP-ICT-TB08	Shift gear box	24	GP-ICT-TB24	Key
9	GP-ICT-TB09	Oil stick	25	GP-ICT-TB25	Sheath, Key
10	GP-ICT-TB10	O-ring, oil stick	26	GP-ICT-TB26	Gasket
11	GP-ICT-TB11	Principal axes	27	GP-ICT-TB27	Spring washer
12	GP-ICT-TB12	Ring GB/T	28	GP-ICT-TB28	Hex bolts
13	GP-ICT-TB13	Steel ball GB/T	29	GP-ICT-TB29	Protec cover, principal axes
14	GP-ICT-TB14	Spring, Principal axes	30	GP-ICT-TB30	Screw
15	GP-ICT-TB15	Iniative gear	31	GP-ICT-TB31	Splitpin
16	GP-ICT-TB16	Axletree	32	GP-ICT-TB32	Nut

SL NO	PART NO	DESCRIPTION	SL NO	PART NO	DESCRIPTION
33	GP-ICT-TB33	Washer	49	GP-ICT-TB49	Ball bearing
34	GP-ICT-TB34	Restrict cover, reverse gear	50	GP-ICT-TB50	Double gear, countershaft
35	GP-ICT-TB35	Spring	51	GP-ICT-TB51	Gasket, countershaft
36	GP-ICT-TB36	Spring seat, reverse gear	52	GP-ICT-TB52	Sheath, countershaft
37	GP-ICT-TB37	Double gear, reverse gear	53	GP-ICT-TB53	Thrust ball bearing
38	GP-ICT-TB38	Pushing plate, reverse gear	54	GP-ICT-TB54	O-ring
39	GP-ICT-TB39	Axes, reverse gear	55	GP-ICT-TB55	Column pin
40	GP-ICT-TB40	Washer	56	GP-ICT-TB56	Gasket
41	GP-ICT-TB41	Spring washer	57	GP-ICT-TB57	Spring washer
42	GP-ICT-TB42	Bolt	58	GP-ICT-TB58	Bolt
43	GP-ICT-TB43	Splitpin GB/T	59	GP-ICT-TB59	Sheath
44	GP-ICT-TB44	Nut GB/T	60	GP-ICT-TB60	Worm column pin
45	GP-ICT-TB45	Gasket	61	GP-ICT-TB61	Reverse gear fork
46	GP-ICT-TB46	Iniative umbrella gear	62	GP-ICT-TB62	Axes, reverse gear fork
47	GP-ICT-TB47	Countershaft	63	GP-ICT-TB63	Nut
48	GP-ICT-TB48	Key	64	GP-ICT-TB64	Seat, reverse gear cable

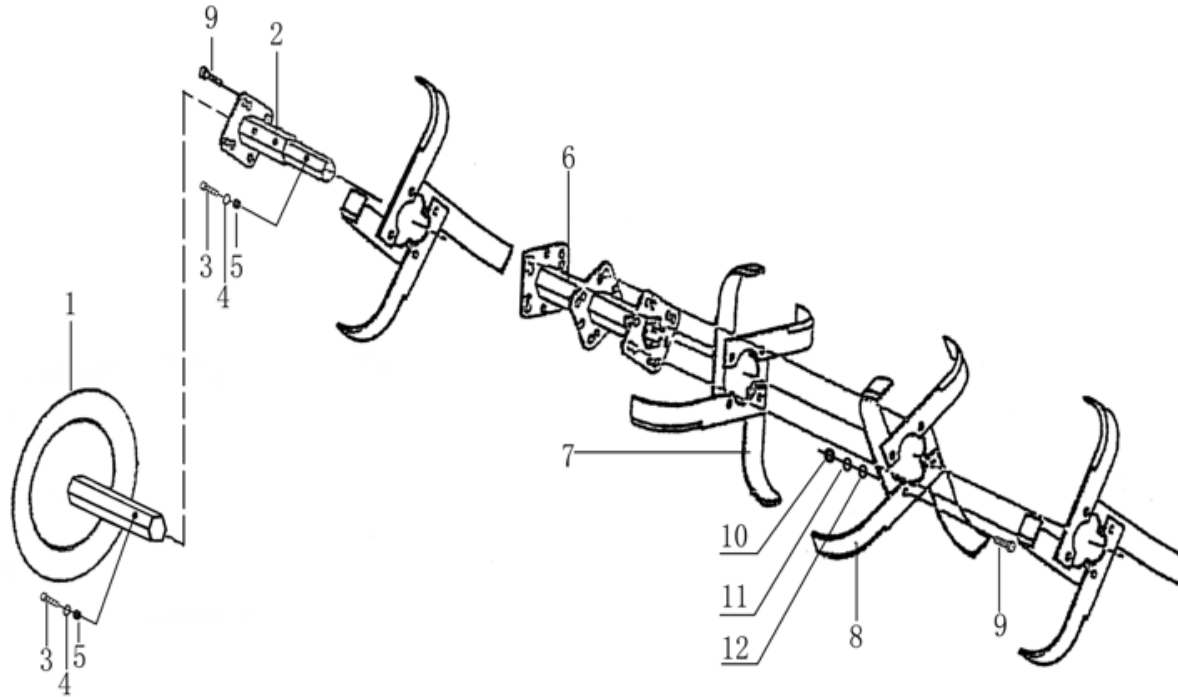
SL NO	PART NO	DESCRIPTION	SL NO	PART NO	DESCRIPTION
65	GP-ICT-TB65	Seat, clutch cable	82	GP-ICT-TB82	Cushion
66	GP-ICT-TB66	Seat, clutch cable	83	GP-ICT-TB83	Cover, clutch
67	GP-ICT-TB67	Spring washer	84	GP-ICT-TB84	Core comp, clutch
68	GP-ICT-TB68	Pin ,clutch fork	85	GP-ICT-TB85	Platen
69	GP-ICT-TB69	Axes, clutch fork	86	GP-ICT-TB86	Friction piece
70	GP-ICT-TB70	Clutch fork	87	GP-ICT-TB87	Driven piece
71	GP-ICT-TB71	Ring	88	GP-ICT-TB88	Driven plate assy
72	GP-ICT-TB72	Clutch washer	89	GP-ICT-TB89	Spring
73	GP-ICT-TB73	Axletree	90	GP-ICT-TB90	Lift slab assy
74	GP-ICT-TB74	Gasket	91	GP-ICT-TB91	Screw
75	GP-ICT-TB75	Sawtooth locked gasket	92	GP-ICT-TB92	Steel ring
76	GP-ICT-TB76	Flange bolt	93	GP-ICT-TB93	Fixed sheath
77	GP-ICT-TB77	Axletree	94	GP-ICT-TB94	Ball bearing
78	GP-ICT-TB78	Core comp, clutch	95	GP-ICT-TB95	Active Pushing cover
79	GP-ICT-TB79	Screw	96	GP-ICT-TB96	Gasket
80	GP-ICT-TB80	Cover, cushion	97	GP-ICT-TB97	O-ring
81	GP-ICT-TB81	Spline plate, clutch	98	GP-ICT-TB98	Washer

TRANSMISSION PART LIST - C



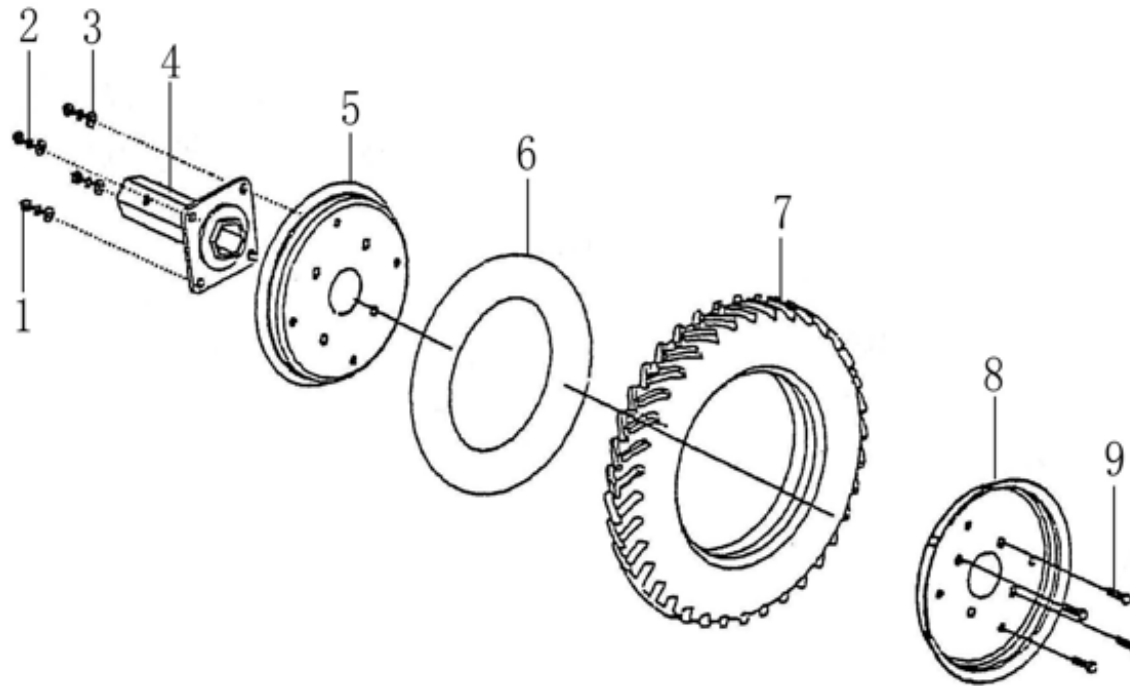
SL NO	PART NO	DESCRIPTION	SL NO	PART NO	DESCRIPTION
1	GP-ICT-TC01	Nut	17	GP-ICT-TC17	Gasket
2	GP-ICT-TC02	Splitpin	18	GP-ICT-TC18	Taper ball bearing
3	GP-ICT-TC03	Spring washer	19	GP-ICT-TC19	Gasket
4	GP-ICT-TC04	Driven umbrella gear	20	GP-ICT-TC20	Side cover, walking case
5	GP-ICT-TC05	Taper ball bearing	21	GP-ICT-TC21	Washer
6	GP-ICT-TC06	Walking case	22	GP-ICT-TC22	Spring washer
7	GP-ICT-TC07	Taper ball bearing	23	GP-ICT-TC23	Hex bolt
8	GP-ICT-TC08	Umbrella gear axes			
9	GP-ICT-TC09	O-ring			
10	GP-ICT-TC10	Drain bolt			
11	GP-ICT-TC11	Oil seal			
12	GP-ICT-TC12	Ball bearing			
13	GP-ICT-TC13	Cover, output axes			
14	GP-ICT-TC14	Gasket			
15	GP-ICT-TC15	Cover, flange axes			
16	GP-ICT-TC16	Walking umbrella gear			

BLADES - D



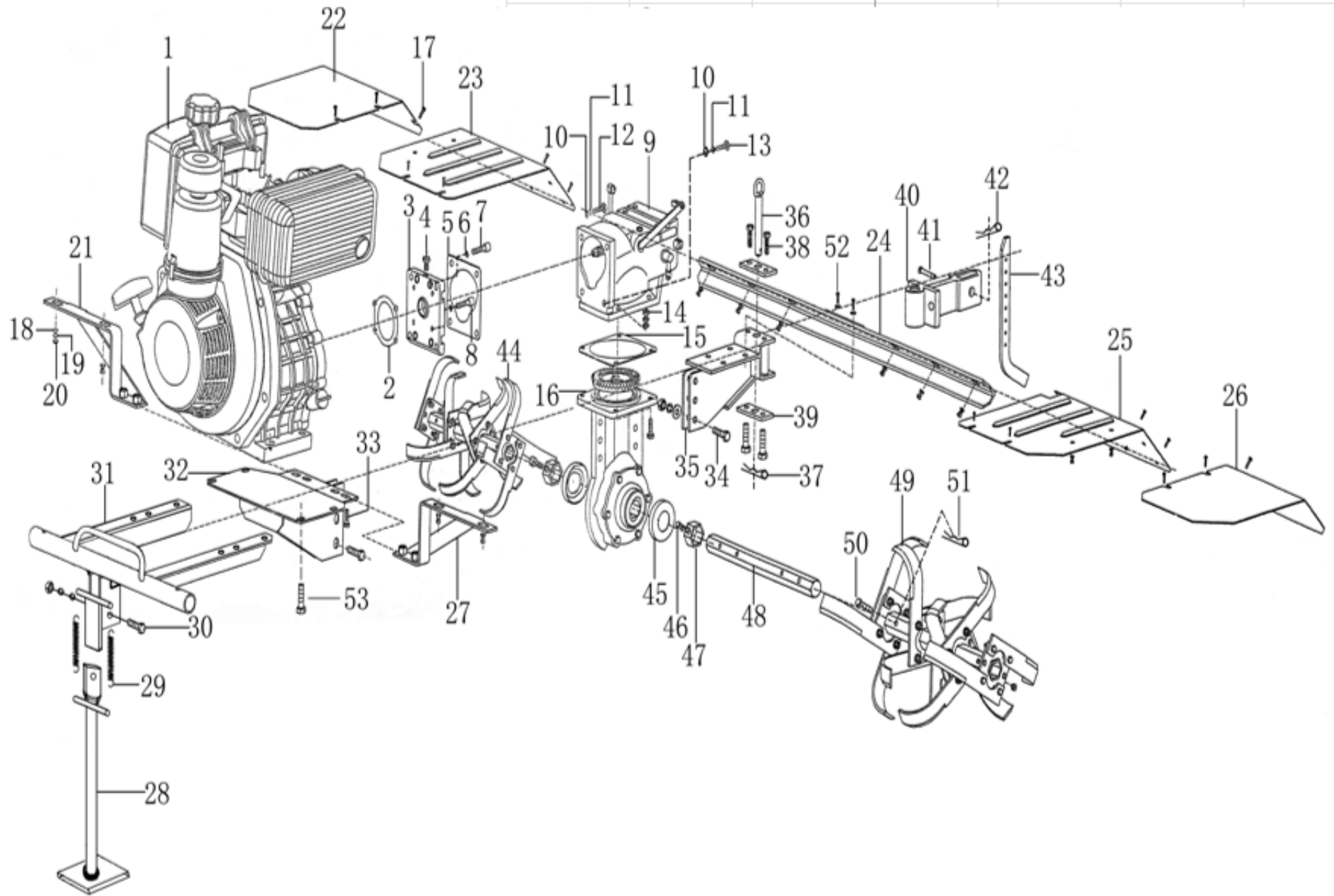
SL NO	PART NO	DESCRIPTION	SL NO	PART NO	DESCRIPTION
1	GP-ICT-TD01	Round plate(optional)	7	GP-ICT-TD07	Blade(L)
2	GP-ICT-TD02	Counter tube	8	GP-ICT-TD08	Blade(R)
3	GP-ICT-TD03	Bolt	9	GP-ICT-TD09	Hex bolt
4	GP-ICT-TD04	Spring washer	10	GP-ICT-TD10	Nut
5	GP-ICT-TD05	Nut	11	GP-ICT-TD11	Washer
6	GP-ICT-TD06	Main tube	12	GP-ICT-TD12	Spring washer

WHEEL PARTS - E



SL NO	PART NO	DESCRIPTION	SL NO	PART NO	DESCRIPTION
1	GP-ICT-TE01	Nut	6	GP-ICT-TE06	Inner tube
2	GP-ICT-TE02	Spring washer	7	GP-ICT-TE07	Outer rubber tyre
3	GP-ICT-TE03	Washer	8	GP-ICT-TE08	Spoke (L)
4	GP-ICT-TE04	Wheel axle	9	GP-ICT-TE09	Hex bolt
5	GP-ICT-TE05	Spoke (R)			

JOINT PARTS - D








SL NO	PART NO	DESCRIPTION	SL NO	PART NO	DESCRIPTION
1	GP-ICT-TF01	Diesel engine comp	17	GP-ICT-TF17	Bolts
	GP-ICT-TF1.1	Diesel engine comp(Electric start)	18	GP-ICT-TF18	Washer
2	GP-ICT-TF02	Flange gasket	19	GP-ICT-TF19	Spring washer
3	GP-ICT-TF03	Flange	20	GP-ICT-TF20	Nut
4	GP-ICT-TF04	Bolt	21	GP-ICT-TF21	Frame(R)
5	GP-ICT-TF05	Airproof gasket, gear box	22	GP-ICT-TF22	Vice Dust cover(R)
6	GP-ICT-TF06	Spring washer	23	GP-ICT-TF23	Bust cover (R)
7	GP-ICT-TF07	Screw	24	GP-ICT-TF24	Frame, Dust cover (Back)
8	GP-ICT-TF08	Screw	25	GP-ICT-TF25	Dust cover(L)
9	GP-ICT-TF09	Gear box comp	26	GP-ICT-TF26	Vice Dust cover(L)
10	GP-ICT-TF10	Washer	27	GP-ICT-TF27	Frame(L)
11	GP-ICT-TF11	Spring washer	28	GP-ICT-TF28	Bumper support
12	GP-ICT-TF12	Bolts	29	GP-ICT-TF29	Spring
13	GP-ICT-TF13	Bolts	30	GP-ICT-TF30	Falnge bolt
14	GP-ICT-TF14	Nut	31	GP-ICT-TF31	Bumper comp
15	GP-ICT-TF15	Core comp, clutch	32	GP-ICT-TF32	Support frame, engine
16	GP-ICT-TF16	Gear box comp	33	GP-ICT-TF33	Bolts

SL NO	PART NO	DESCRIPTION	SL NO	PART NO	DESCRIPTION
34	GP-ICT-TF34	Bolts	51	GP-ICT-TF51	Clip
35	GP-ICT-TF35	Dragging assy	52	GP-ICT-TF52	Flange bolt
36	GP-ICT-TF36	Pin with ring	53	GP-ICT-TF53	Flange bolt
37	GP-ICT-TF37	Clip			
38	GP-ICT-TF38	Bolts			
39	GP-ICT-TF39	Connection plate			
40	GP-ICT-TF40	Connection frame			
41	GP-ICT-TF41	Pin			
42	GP-ICT-TF42	Clip			
43	GP-ICT-TF43	Resistance rod			
44	GP-ICT-TF44	Dry land blade comp(R)			
45	GP-ICT-TF45	Dust protect cover			
46	GP-ICT-TF46	Bolts			
47	GP-ICT-TF47	Flange fix sheath			
48	GP-ICT-TF48	Flange output axes			
49	GP-ICT-TF49	Dry land blade comp(L)			
50	GP-ICT-TF50	Pin			






WARRANTY CARD

CUSTOMER COPY

DATE _____	DATE OF DELIVERY _____	DEALERS OFFICIAL SEAL	DEALERS SIGN _____
PURCHASERS NAME & ADDRESS _____ _____	 CUSTOMER SIGN		
PRODUCT NAME	PRODUCT SERIAL NO.	INVOICE/DN NO.	
			






I/Will accept the terms and conditions of warranty as in the warranty card

DEALERS COPY

DATE _____	DATE OF DELIVERY _____	DEALERS OFFICIAL SEAL	DEALERS SIGN _____
PURCHASERS NAME & ADDRESS _____ _____	 CUSTOMER SIGN		
PRODUCT NAME	PRODUCT SERIAL NO.	INVOICE/DN NO.	
			

I/Will accept the terms and conditions of warranty as in the warranty card

COMPANY COPY

DATE _____	DATE OF DELIVERY _____	DEALERS OFFICIAL SEAL	DEALERS SIGN _____
PURCHASERS NAME & ADDRESS _____ _____	 CUSTOMER SIGN		
PRODUCT NAME	PRODUCT SERIAL NO.	INVOICE/DN NO.	
			

I/Will accept the terms and conditions of warranty as in the warranty card

1. LIMITED WARRANTY PERIOD : For a period of six months from the date of Sale / delivery of the product which ever is earlier. 2. LIMITED WARRANTY OBLIGATION : Replacement of defective part(s) by authorized dealer are free of charges. If found defective by reasons of defective material / poor workmanship, parts will be replaced and there will be no value re-imburement. 3. TERMS & CONDITIONS : a. Claims under warranty will be accepted on submission of Warranty Card duly filled and stamped by authorized dealer together with the original purchase document. : b. Shipping / transportation / Incidental charges incurred in replacing defective parts under warranty shall be borne by the purchaser

WARRANTY null & void if

- (i) Lack of maintenance, (ii) Incorrect use of the machine or tampering, (iii) Use of non-genuine spare parts, (iv) Usage of acids, solvents, or any flammable materials, (v) Non-usage of filter water / clear water / soft water & using water above 40°C temperature, (vi) While using the pressure washers to draw water which is contaminated with dust & solvents (eg. paint thinners, gasoline, oil, etc.), (vii) Repair done by unauthorized service people, (viii) Those parts subject to wear & tear due to normal operations and plastic parts, rubber items etc, (ix) Loose connections, faulty electrical fixtures & fluctuations in power supply.
- 4. Should any failure occur during or after the warranty period, customer does not have the right to interrupt payment / price discount.
- 5. Incidental or consequential damages like inconvenience commercial loss, loss of tie, mental agony etc.
- 6. Loss of any nature due to operation or non-operation is not covered under warranty.
- 7. All free service are at Dealer's service point only.
- 8. Warranty ceases if service is not done periodically.
- 9. The attached card should be completed and returned to Ratnagiri Impex Pvt. Ltd. for registration immediately after sale / delivery.
- 10. The warranty is void unless you register the warranty card with Ratnagiri Impex Pvt. Ltd.
- 11. The decision of Ratnagiri Impex Pvt. Ltd., in settling the warranty is final in all respects.
- 12. All disputes are subject to Bangalore Courts Jurisdiction

1. LIMITED WARRANTY PERIOD : For a period of six months from the date of Sale / delivery of the product which ever is earlier. 2. LIMITED WARRANTY OBLIGATION : Replacement of defective part(s) by authorized dealer are free of charges. If found defective by reasons of defective material / poor workmanship, parts will be replaced and there will be no value re-imburement. 3. TERMS & CONDITIONS : a. Claims under warranty will be accepted on submission of Warranty Card duly filled and stamped by authorized dealer together with the original purchase document. : b. Shipping / transportation / Incidental charges incurred in replacing defective parts under warranty shall be borne by the purchaser.

WARRANTY null & void if

- (i) Lack of maintenance, (ii) Incorrect use of the machine or tampering, (iii) Use of non-genuine spare parts, (iv) Usage of acids, solvents, or any flammable materials, (v) Non-usage of filter water / clear water / soft water & using water above 40°C temperature, (vi) While using the pressure washers to draw water which is contaminated with dust & solvents (eg. paint thinners, gasoline, oil, etc.), (vii) Repair done by unauthorized service people, (viii) Those parts subject to wear & tear due to normal operations and plastic parts, rubber items etc, (ix) Loose connections, faulty electrical fixtures & fluctuations in power supply.
- 4. Should any failure occur during or after the warranty period, customer does not have the right to interrupt payment / price discount.
- 5. Incidental or consequential damages like inconvenience commercial loss, loss of tie, mental agony etc.
- 6. Loss of any nature due to operation or non-operation is not covered under warranty.
- 7. All free service are at Dealer's service point only.
- 8. Warranty ceases if service is not done periodically.
- 9. The attached card should be completed and returned to Ratnagiri Impex Pvt. Ltd. for registration immediately after sale / delivery.
- 10. The warranty is void unless you register the warranty card with Ratnagiri Impex Pvt. Ltd.
- 11. The decision of Ratnagiri Impex Pvt. Ltd., in settling the warranty is final in all respects.
- 12. All disputes are subject to Bangalore Courts Jurisdiction

1. LIMITED WARRANTY PERIOD : For a period of six months from the date of Sale / delivery of the product which ever is earlier. 2. LIMITED WARRANTY OBLIGATION : Replacement of defective part(s) by authorized dealer are free of charges. If found defective by reasons of defective material / poor workmanship, parts will be replaced and there will be no value re-imburement. 3. TERMS & CONDITIONS : a. Claims under warranty will be accepted on submission of Warranty Card duly filled and stamped by authorized dealer together with the original purchase document. : b. Shipping / transportation / Incidental charges incurred in replacing defective parts under warranty shall be borne by the purchaser.

WARRANTY null & void if

- (i) Lack of maintenance, (ii) Incorrect use of the machine or tampering, (iii) Use of non-genuine spare parts, (iv) Usage of acids, solvents, or any flammable materials, (v) Non-usage of filter water / clear water / soft water & using water above 40°C temperature, (vi) While using the pressure washers to draw water which is contaminated with dust & solvents (eg. paint thinners, gasoline, oil, etc.), (vii) Repair done by unauthorized service people, (viii) Those parts subject to wear & tear due to normal operations and plastic parts, rubber items etc, (ix) Loose connections, faulty electrical fixtures & fluctuations in power supply.
- 4. Should any failure occur during or after the warranty period, customer does not have the right to interrupt payment / price discount.
- 5. Incidental or consequential damages like inconvenience commercial loss, loss of tie, mental agony etc.
- 6. Loss of any nature due to operation or non-operation is not covered under warranty.
- 7. All free service are at Dealer's service point only.
- 8. Warranty ceases if service is not done periodically.
- 9. The attached card should be completed and returned to Ratnagiri Impex Pvt. Ltd. for registration immediately after sale / delivery.
- 10. The warranty is void unless you register the warranty card with Ratnagiri Impex Pvt. Ltd.
- 11. The decision of Ratnagiri Impex Pvt. Ltd., in settling the warranty is final in all respects.
- 12. All disputes are subject to Bangalore Courts Jurisdiction



FREE SERVICE COUPON (30DAYS/30HRS. WHICHEVER IS EARLIER)

MODEL

SERIAL NUMBER

PDI DATE

SERVICE NO.

PURCHASE BILL NO.

DATE

DEALERS OFFICE SEAL

- 1. Check and test the fuel mixture
- 3. Check , clean and adjust the spark plug
- 5. Check and sparken the cutting tools
- 7. Start and check the noise, vibration, loosen etc..

OPERATIONS

- 2. check and clean the air filter
- 4. Check and adjust the carburetor tuning
- 6. Product familirisation on usage
- 8. Routine maintenance and shortage.

FREE SERVICE COUPON (30DAYS/30HRS. WHICHEVER IS EARLIER)

MODEL

SERIAL NUMBER

PDI DATE

SERVICE NO.

PURCHASE BILL NO.

DATE

DEALERS OFFICE SEAL

- 1. Check and test the fuel mixture
- 3. Check , clean and adjust the spark plug
- 5. Check and sparken the cutting tools
- 7. Start and check the noise, vibration, loosen etc..

OPERATIONS

- 2. check and clean the air filter
- 4. Check and adjust the carburetor tuning
- 6. Product familirisation on usage
- 8. Routine maintenance and shortage.

FREE SERVICE COUPON (30DAYS/30HRS. WHICHEVER IS EARLIER)

MODEL

SERIAL NUMBER

PDI DATE

SERVICE NO.

PURCHASE BILL NO.

DATE

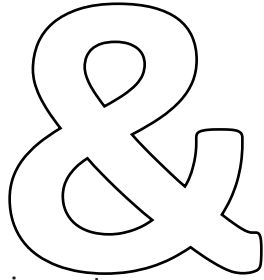
DEALERS OFFICE SEAL

- 1. Check and test the fuel mixture
- 3. Check , clean and adjust the spark plug
- 5. Check and sparken the cutting tools
- 7. Start and check the noise, vibration, loosen etc..

OPERATIONS

- 2. check and clean the air filter
- 4. Check and adjust the carburetor tuning
- 6. Product familirisation on usage
- 8. Routine maintenance and shortage.

DOS



DONTs

attempting to use the equipments.

1. Always read the instruction manual supplied along with the equipments and understand the correct installation and operating procedures before

trousers and jackets while operating potentially dangerous machines
2. It is important to use the personal protection equipments such as head helmet with visor, ear defenders, goggles, safety gloves, cut resistant shoes,
3. Avoid untrained persons using the equipments. Children must not be allowed to handle these equipments
4. Always use genuine spares and accessories in repairs and usage to derive maximum life of the equipments.
5. Always keep the equipments in good working condition to minimize loss of output as well as to reduce the pollution and save the environment
6. Do not use the machine within range of persons unless they wear protective clothing
7. Do not operate the machine when fatigued or under the influence of alcohol or drugs
8. For more query kindly contact for our Service Center/Dealer/ franchise

NO. 1 CHOICE OF FARMERS SINCE 1999



Marketed by.
**ratnagiri
impex**
BRINGING YOU THE FUTURE... NOW

RATNAGIRI IMPEX PVT., LTD.,

Annapurna House, #1 / 1G, 7th Cross, New
Guddadahalli

Mysore Road, Bangalore - 560 026

Missed Call : 7393 938 938

Email: ask@agrimart.in