

KASEI

DIAGRAM & SPARE PARTS

KZ-6300BBP-PRO-2S

BLOWER



**With
Japan
Walbro
carburetor**

Original Instructions

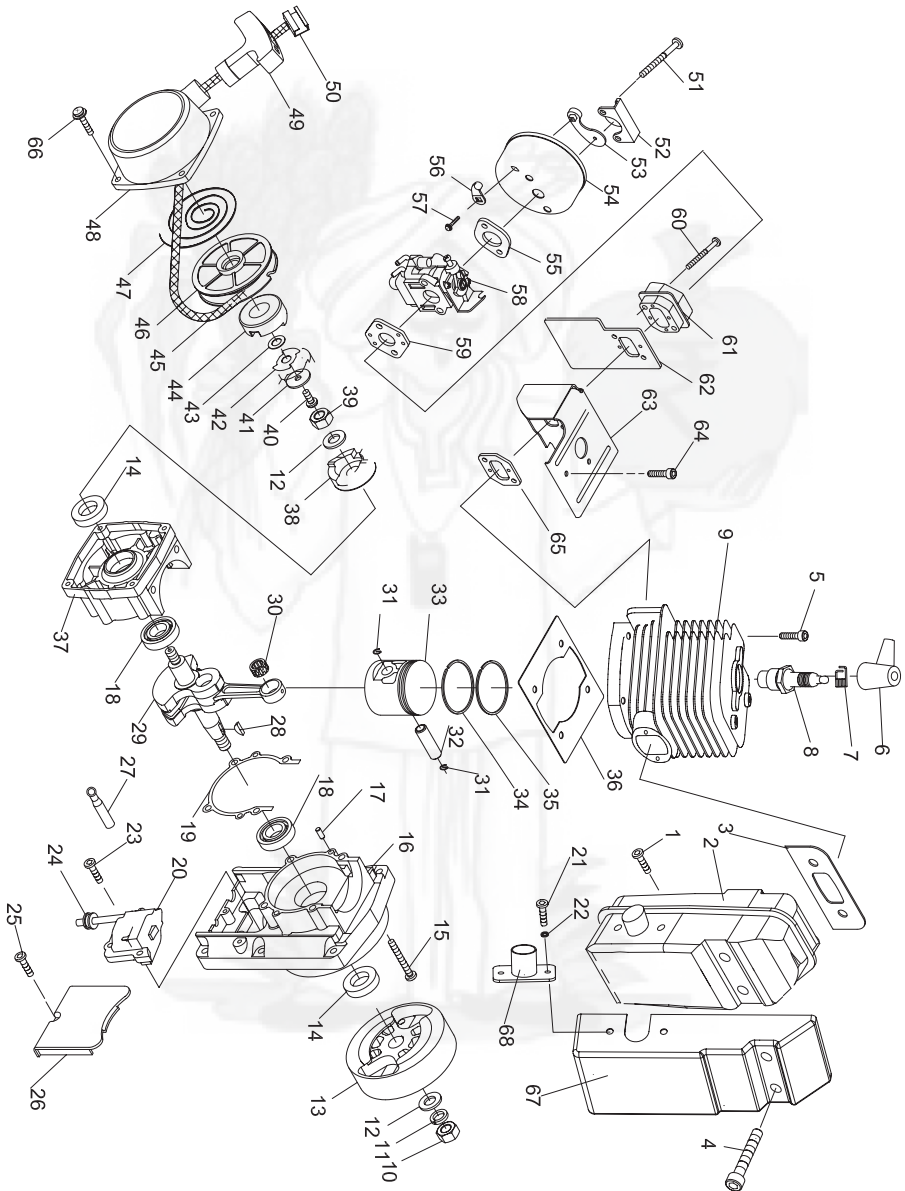


WARNING  **DANGER**

Read rules for safe operation and all instructions carefully. We provide this Operator's Manual which must be read and understood for proper and safe operation



KASEI-KZ-6300BBP-PRO-2S BLOWER ENGINE DIAGRAM

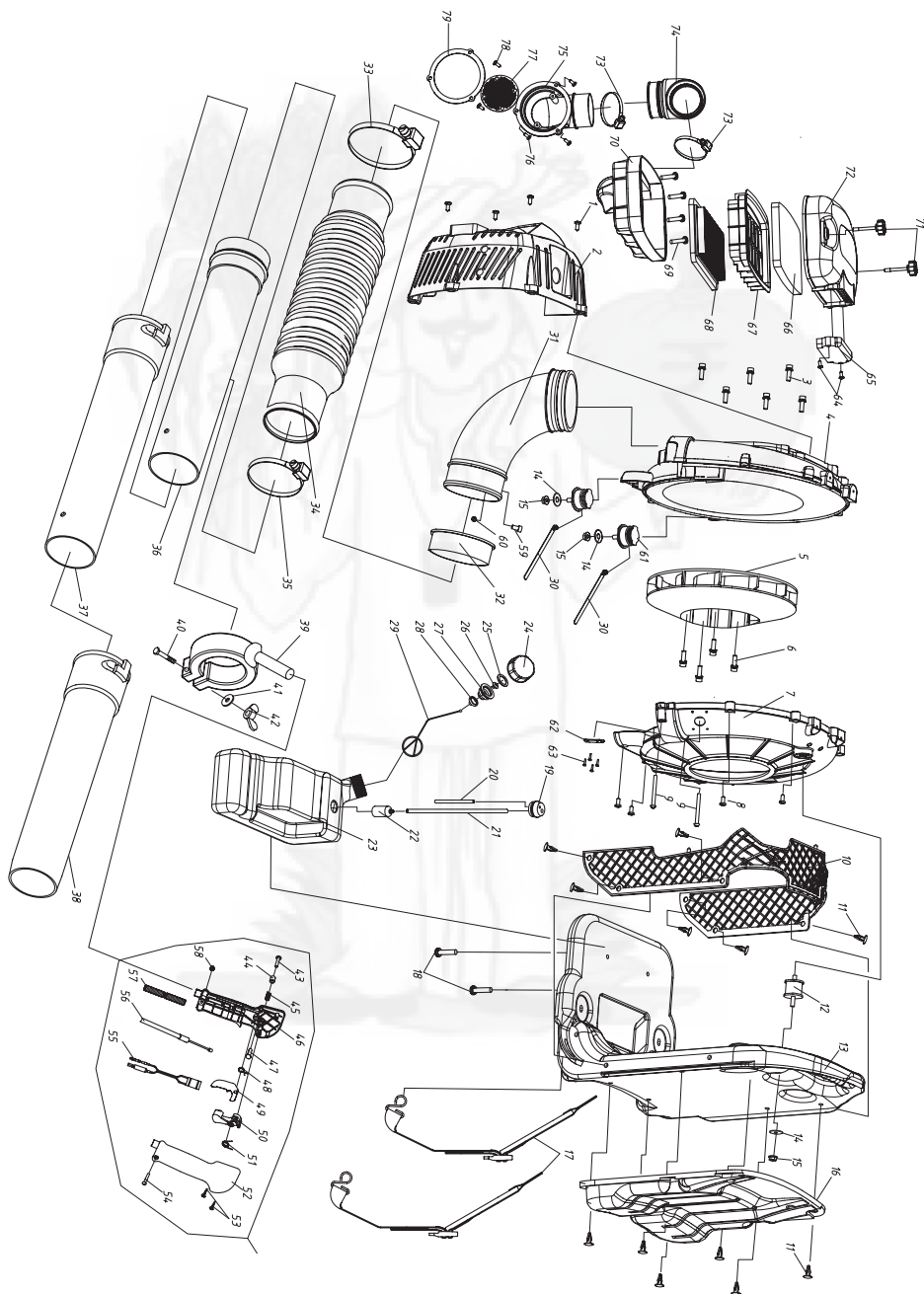


KASEI-KZ-6300BBP-PRO-2S BLOWER ENGINE SPARE PARTS LIST

No	PART NO.	PART DESCRIPTION
1	KZ-6300BBP-EN-01	BOLT
2	KZ-6300BBP-EN-02	MUFFLER
3	KZ-6300BBP-EN-03	MUFFLER GASKET
4	KZ-6300BBP-EN-04	BOLT
5	KZ-6300BBP-EN-05	BOLT
6	KZ-6300BBP-EN-06	CAP
7	KZ-6300BBP-EN-07	SPRING
8	KZ-6300BBP-EN-08	PLUG
9	KZ-6300BBP-EN-09	CYLINDER
10	KZ-6300BBP-EN-10	NUT
11	KZ-6300BBP-EN-11	WASHER
12	KZ-6300BBP-EN-12	WASHER
13	KZ-6300BBP-EN-13	ROTOR
14	KZ-6300BBP-EN-14	SEAL
15	KZ-6300BBP-EN-15	BOLT
16	KZ-6300BBP-EN-16	FRONT CRANK CASE
17	KZ-6300BBP-EN-17	PIN
18	KZ-6300BBP-EN-18	BEARING
19	KZ-6300BBP-EN-19	GASKET
20	KZ-6300BBP-EN-20	ROTOR
21	KZ-6300BBP-EN-21	BOLT
22	KZ-6300BBP-EN-22	WASHER
23	KZ-6300BBP-EN-23	BOLT
24	KZ-6300BBP-EN-24	GROMMET
25	KZ-6300BBP-EN-25	BOLT
26	KZ-6300BBP-EN-26	RETAINER
27	KZ-6300BBP-EN-27	STOP WIRE
28	KZ-6300BBP-EN-28	KEY
29	KZ-6300BBP-EN-29	CRANKSHAFT
30	KZ-6300BBP-EN-30	BEARING
31	KZ-6300BBP-EN-31	RING
32	KZ-6300BBP-EN-32	PISTON PIN
33	KZ-6300BBP-EN-33	PISTON
34	KZ-6300BBP-EN-34	PISTON RING
35	KZ-6300BBP-EN-35	PISTON RING

No	PART NO.	PART DESCRIPTION
36	KZ-6300BBP-EN-36	GASKET
37	KZ-6300BBP-EN-37	BACK CRANK CASE
38	KZ-6300BBP-EN-38	RATCHET
39-50	KZ-6300BBP-EN-39-50	STARTER
39	KZ-6300BBP-EN-39	NUT
40	KZ-6300BBP-EN-40	SCREW
41	KZ-6300BBP-EN-41	WASHER
42	KZ-6300BBP-EN-42	GUIDE SLICE
43	KZ-6300BBP-EN-43	WASHER 8
44	KZ-6300BBP-EN-44	START WHEEL
45	KZ-6300BBP-EN-45	ROPE
46	KZ-6300BBP-EN-46	PULLEY
47	KZ-6300BBP-EN-47	SPRING
48	KZ-6300BBP-EN-48	CASE
49	KZ-6300BBP-EN-49	HANDLE
50	KZ-6300BBP-EN-50	PACK
51	KZ-6300BBP-EN-51	BOLT
52	KZ-6300BBP-EN-52	BAFFLE
53	KZ-6300BBP-EN-53	CHOKER
54	KZ-6300BBP-EN-54	COVER
55	KZ-6300BBP-EN-55	GASKET
56	KZ-6300BBP-EN-56	HANDLE
57	KZ-6300BBP-EN-57	SCREW
58	KZ-6300BBP-EN-58	CARBURATOR
59	KZ-6300BBP-EN-59	GASKET
60	KZ-6300BBP-EN-60	BOLT
61	KZ-6300BBP-EN-61	PIPE
62	KZ-6300BBP-EN-62	GASKET
63	KZ-6300BBP-EN-63	GUIDE AIR PLATE
64	KZ-6300BBP-EN-64	BOLT
65	KZ-6300BBP-EN-65	GASKET
66	KZ-6300BBP-EN-66	BOLT
67	KZ-6300BBP-EN-67	COVER
68	KZ-6300BBP-EN-68	COVER

KASEI-KZ-6300BBP-PRO-2S BLOWER SPARE DIAGRAM



KASEI-KZ-6300BBP-PRO-2S BLOWER SPARE PARTS LIST

No	PART NO.	PART DESCRIPTION
1	KZ-6300BBP-BL-01	SCREW M5×16
2	KZ-6300BBP-BL-02	PROTECTION
3	KZ-6300BBP-BL-03	SCREW M6×30
4	KZ-6300BBP-BL-04	VOLUTE CASE
5	KZ-6300BBP-BL-05	IMPELLER ASSEM
6	KZ-6300BBP-BL-06	SCREW M5×35
7	KZ-6300BBP-BL-07	VOLUTE CASE
8	KZ-6300BBP-BL-08	SCREW M5×16
9	KZ-6300BBP-BL-09	SCREW M5×55
10	KZ-6300BBP-BL-10	PROTECT NET
11	KZ-6300BBP-BL-11	BACK CLIP
12	KZ-6300BBP-BL-12	SUPPORT
13	KZ-6300BBP-BL-13	FRAME
14	KZ-6300BBP-BL-14	WASHER 6
15	KZ-6300BBP-BL-15	NUT M6
16	KZ-6300BBP-BL-16	BACK MAT
17	KZ-6300BBP-BL-17	BAND
18	KZ-6300BBP-BL-18	SCREW M6×16
19	KZ-6300BBP-BL-19	PLUG
20	KZ-6300BBP-BL-20	FUEL PIPE
21	KZ-6300BBP-BL-21	FUEL PIPE
22	KZ-6300BBP-BL-22	CLEANER
23	KZ-6300BBP-BL-23	FUEL TANK
24	KZ-6300BBP-BL-24	FUEL TANK LID
25	KZ-6300BBP-BL-25	GASKET
26	KZ-6300BBP-BL-26	INLET
27	KZ-6300BBP-BL-27	INSIDE COVER
28	KZ-6300BBP-BL-28	END COVER
29	KZ-6300BBP-BL-29	CHAIN
30	KZ-6300BBP-BL-30	LINE
31	KZ-6300BBP-BL-31	FAN JOINT ASSEM
32	KZ-6300BBP-BL-32	RUBBER PLUG
33	KZ-6300BBP-BL-33	CLIP
34	KZ-6300BBP-BL-34	HOSE
35	KZ-6300BBP-BL-35	CLIP
36	KZ-6300BBP-BL-36	PIPE
37	KZ-6300BBP-BL-37	PIPE
38	KZ-6300BBP-BL-38	PIPE
39	KZ-6300BBP-BL-39	HANDLE
40	KZ-6300BBP-BL-40	BOLT

No	PART NO.	PART DESCRIPTION
41	KZ-6300BBP-BL-41	WASHER 6
42	KZ-6300BBP-BL-42	NUT M6
43	KZ-6300BBP-BL-43	SCREW
44	KZ-6300BBP-BL-44	PUSH BUTTON
45	KZ-6300BBP-BL-45	SPRING
46	KZ-6300BBP-BL-46	LEFT MANIPULATOR
47	KZ-6300BBP-BL-47	PIN
48	KZ-6300BBP-BL-48	SPRING
49	KZ-6300BBP-BL-49	HANDLE
50	KZ-6300BBP-BL-50	HANDLE
51	KZ-6300BBP-BL-51	LONG SPRING
52	KZ-6300BBP-BL-52	RIGHT MANIPULATOR
53	KZ-6300BBP-BL-53	SCREW
54	KZ-6300BBP-BL-54	SCREW
55	KZ-6300BBP-BL-55	STOP SWITCH
56	KZ-6300BBP-BL-56	FUEL THROTTLE
57	KZ-6300BBP-BL-57	TUBE
58	KZ-6300BBP-BL-58	NUT M5
59	KZ-6300BBP-BL-59	SCREW M5×10
60	KZ-6300BBP-BL-60	NUT M5
61	KZ-6300BBP-BL-61	SUPPORT
62	KZ-6300BBP-BL-62	LID
63		
64	KZ-6300BBP-BL-64	SCREW
65	KZ-6300BBP-BL-65	CLEANER OUTSIDE COVER
66	KZ-6300BBP-BL-66	FILTER
67	KZ-6300BBP-BL-67	FILTER BRACKET
68	KZ-6300BBP-BL-68	FILTER
69	KZ-6300BBP-BL-69	SCREW M6×25
70	KZ-6300BBP-BL-70	CLEANER INSIDE COVER
71	KZ-6300BBP-BL-71	SCREW
72	KZ-6300BBP-BL-72	CLEANER OUTSIDE COVER
73	KZ-6300BBP-BL-73	CLIP
74	KZ-6300BBP-BL-74	PIPE
75	KZ-6300BBP-BL-75	INSIDE COVER
76	KZ-6300BBP-BL-76	SCREW M5×20
77	KZ-6300BBP-BL-77	BAFFLE
78	KZ-6300BBP-BL-78	SCREW
79	KZ-6300BBP-BL-79	GASKET

INSPECTION & MAINTENANCE

For safety use, make sure the machine is cleaned every three-months. Before working, make sure to inspect the filter and the nozzle, and ensure there is no impurity. After working, make sure there is no water in the pump and the hose.

If the machine needs to be repaired in the guarantee period, please return the machine to the shop. You need to provide the certificate of purchase in order to repair or get the substitute.

Before Packing, the machine should be cleaned, then use closed packaging, packaging should be firm. Store the machine in dry place.

For transportation safety. The machine should comply with ISTA.



Meaning of crossed - out wheeled dustbin:

Do not dispose of electrical machines as unsorted municipal waste, use separate collection facilities.

If electrical machines are disposed of in landfills or dumps, hazardous substances can leak into the groundwater and get into the food chain, damaging your health and well-being.

When replacing old machines with new ones, the retailer is legally obligated to take back your old machine for disposals at least free of charge.

Warranty Card

CUSTOMER COPY



Purchaser's Name & Address

Date of Delivery

Product Name

KZ-6300BBP-PRO-2S BLOWER

Dealer's Office Seal

Product Serial No.

Dealer Sign _____

Invoice / DN No.

Customer Sign. _____

I/We accept the terms and conditions of Warranty as in the Warranty Card.

Warranty Card

DEALER'S COPY



Purchaser's Name & Address

Date of Delivery

Product Name

KZ-6300BBP-PRO-2S BLOWER

Dealer's Office Seal

Product Serial No.

Dealer Sign _____

Invoice / DN No.

Customer Sign. _____

I/We accept the terms and conditions of Warranty as in the Warranty Card.

Warranty Card

COMPANY COPY



Purchaser's Name & Address

Date of Delivery

Product Name

KZ-6300BBP-PRO-2S BLOWER

Dealer's Office Seal

Product Serial No.

Dealer Sign _____

Invoice / DN No.

Customer Sign. _____

I/We accept the terms and conditions of Warranty as in the Warranty Card.

1. **LIMITED WARRANTY PERIOD** : For a period of six months from the date of Sale / delivery of the product which ever is earlier. 2. **LIMITED WARRANTY OBLIGATION** : Replacement of defective part(s) by authorized dealer are free of charges. If found defective by reasons of defective material / poor workmanship, parts will be replaced and there will be no value re-imbusement. 3. **TERMS & CONDITIONS** : a. Claims under warranty will be accepted on submission of Warranty Card duly filled and stamped by authorized dealer together with the original purchase document. : b. Shipping / transportation / Incidental charges incurred in replacing defective parts under warranty shall be borne by the purchaser.

WARRANTY null & void if

- (i) Lack of maintenance, (ii) Incorrect use of the machine or tampering, (iii) Use of non-genuine spare parts, (iv) Usage of acids, solvents, or any flammable materials, (v) Non-usage of filter water / clear water / soft water & using water above 40°C temperature, (vi) While using the pressure washers to draw water which is contaminated with dust & solvents (eg. paint thinners, gasoline, oil, etc.), (vii) Repair done by unauthorized service people, (viii) Those parts subject to wear & tear due to normal operations and plastic parts, rubber items etc, (ix) Loose connections, faulty electrical fixtures & fluctuations in power supply.
4. Should any failure occur during or after the warranty period, customer does not have the right to interrupt payment / price discount.
 5. Incidental or consequential damages like inconvenience commercial loss, loss of tie, mental agony etc.
 6. Loss of any nature due to operation or non-operation is not covered under warranty.
 7. All free service are at Dealer's service point only.
 8. Warranty ceases if service is not done periodically.
 9. The attached card should be completed and returned to Ratnagiri Impex Pvt. Ltd. for registration immediately after sale / delivery.
 10. The warranty is void unless you register the warranty card with Ratnagiri Impex Pvt. Ltd.
 11. The decision of Ratnagiri Impex Pvt. Ltd., in settling the warranty is final in all respects.
 12. All disputes are subject to Bangalore Courts Jurisdiction

1. **LIMITED WARRANTY PERIOD** : For a period of six months from the date of Sale / delivery of the product which ever is earlier. 2. **LIMITED WARRANTY OBLIGATION** : Replacement of defective part(s) by authorized dealer are free of charges. If found defective by reasons of defective material / poor workmanship, parts will be replaced and there will be no value re-imbusement. 3. **TERMS & CONDITIONS** : a. Claims under warranty will be accepted on submission of Warranty Card duly filled and stamped by authorized dealer together with the original purchase document. : b. Shipping / transportation / Incidental charges incurred in replacing defective parts under warranty shall be borne by the purchaser.

WARRANTY null & void if

- (i) Lack of maintenance, (ii) Incorrect use of the machine or tampering, (iii) Use of non-genuine spare parts, (iv) Usage of acids, solvents, or any flammable materials, (v) Non-usage of filter water / clear water / soft water & using water above 40°C temperature, (vi) While using the pressure washers to draw water which is contaminated with dust & solvents (eg. paint thinners, gasoline, oil, etc.), (vii) Repair done by unauthorized service people, (viii) Those parts subject to wear & tear due to normal operations and plastic parts, rubber items etc, (ix) Loose connections, faulty electrical fixtures & fluctuations in power supply.
4. Should any failure occur during or after the warranty period, customer does not have the right to interrupt payment / price discount.
 5. Incidental or consequential damages like inconvenience commercial loss, loss of tie, mental agony etc.
 6. Loss of any nature due to operation or non-operation is not covered under warranty.
 7. All free service are at Dealer's service point only.
 8. Warranty ceases if service is not done periodically.
 9. The attached card should be completed and returned to Ratnagiri Impex Pvt. Ltd. for registration immediately after sale / delivery.
 10. The warranty is void unless you register the warranty card with Ratnagiri Impex Pvt. Ltd.
 11. The decision of Ratnagiri Impex Pvt. Ltd., in settling the warranty is final in all respects.
 12. All disputes are subject to Bangalore Courts Jurisdiction

1. **LIMITED WARRANTY PERIOD** : For a period of six months from the date of Sale / delivery of the product which ever is earlier. 2. **LIMITED WARRANTY OBLIGATION** : Replacement of defective part(s) by authorized dealer are free of charges. If found defective by reasons of defective material / poor workmanship, parts will be replaced and there will be no value re-imbusement. 3. **TERMS & CONDITIONS** : a. Claims under warranty will be accepted on submission of Warranty Card duly filled and stamped by authorized dealer together with the original purchase document. : b. Shipping / transportation / Incidental charges incurred in replacing defective parts under warranty shall be borne by the purchaser.

WARRANTY null & void if

- (i) Lack of maintenance, (ii) Incorrect use of the machine or tampering, (iii) Use of non-genuine spare parts, (iv) Usage of acids, solvents, or any flammable materials, (v) Non-usage of filter water / clear water / soft water & using water above 40°C temperature, (vi) While using the pressure washers to draw water which is contaminated with dust & solvents (eg. paint thinners, gasoline, oil, etc.), (vii) Repair done by unauthorized service people, (viii) Those parts subject to wear & tear due to normal operations and plastic parts, rubber items etc, (ix) Loose connections, faulty electrical fixtures & fluctuations in power supply.
4. Should any failure occur during or after the warranty period, customer does not have the right to interrupt payment / price discount.
 5. Incidental or consequential damages like inconvenience commercial loss, loss of tie, mental agony etc.
 6. Loss of any nature due to operation or non-operation is not covered under warranty.
 7. All free service are at Dealer's service point only.
 8. Warranty ceases if service is not done periodically.
 9. The attached card should be completed and returned to Ratnagiri Impex Pvt. Ltd. for registration immediately after sale / delivery.
 10. The warranty is void unless you register the warranty card with Ratnagiri Impex Pvt. Ltd.
 11. The decision of Ratnagiri Impex Pvt. Ltd., in settling the warranty is final in all respects.
 12. All disputes are subject to Bangalore Courts Jurisdiction



**ratnagiri
impex**
BRINGING YOU THE BEST OF INDIA

1st Free Service Coupon

ISO 9001-2008
CERTIFIED COMPANY

FREE SERVICE COUPON (30 Days / 20 hrs (Which ever is earlier))

Model
KZ-6300BBP-PRO-2S BLOWER

Serial Number

PDI Date

Service No.

Purchase bill no. Date

Dealer's Office Seal & Signature

- Operations:
- Check and Test the Fuel Mixture.
 - Check and Clean the Air Filter
 - Check, Clean and Adjust the Spark plug
 - Check and Adjust the Carburetor Tuning
 - Check and Sharpen the cutting Tools
 - Start and Check the Noise, Vibration, Loosen / Fasteners etc.
 - Product familiarization on Usage
 - Routine maintenance and Storage

Customer Signature.....

Conditions: Operations listed have been performed to my entire satisfaction without any labour charges. Only consumables were charged.



agriculture | horticulture | sericulture | plantations | forestry | garden | health care

WARRANTY AND FREE SERVICE COUPON



**ratnagiri
impex**
BRINGING YOU THE BEST OF INDIA

2nd Free Service Coupon

ISO 9001-2008
CERTIFIED COMPANY

FREE SERVICE COUPON (30 Days / 20 hrs (Which ever is earlier))

Model
KZ-6300BBP-PRO-2S BLOWER

Serial Number

PDI Date

Service No.

Purchase bill no. Date

Dealer's Office Seal & Signature

- Operations:
- Check and Test the Fuel Mixture.
 - Check and Clean the Air Filter
 - Check, Clean and Adjust the Spark plug
 - Check and Adjust the Carburetor Tuning
 - Check and Sharpen the cutting Tools
 - Start and Check the Noise, Vibration, Loosen / Fasteners etc.
 - Product familiarization on Usage
 - Routine maintenance and Storage

Customer Signature.....

Conditions: Operations listed have been performed to my entire satisfaction without any labour charges. Only consumables were charged.



agriculture | horticulture | sericulture | plantations | forestry | garden | health care

WARRANTY AND FREE SERVICE COUPON



**ratnagiri
impex**
BRINGING YOU THE BEST OF INDIA

3rd Free Service Coupon

ISO 9001-2008
CERTIFIED COMPANY

FREE SERVICE COUPON (30 Days / 20 hrs (Which ever is earlier))

Model
KZ-6300BBP-PRO-2S BLOWER

Serial Number

PDI Date

Service No.

Purchase bill no. Date

Dealer's Office Seal & Signature

- Operations:
- Check and Test the Fuel Mixture.
 - Check and Clean the Air Filter
 - Check, Clean and Adjust the Spark plug
 - Check and Adjust the Carburetor Tuning
 - Check and Sharpen the cutting Tools
 - Start and Check the Noise, Vibration, Loosen / Fasteners etc.
 - Product familiarization on Usage
 - Routine maintenance and Storage

Customer Signature.....

Conditions: Operations listed have been performed to my entire satisfaction without any labour charges. Only consumables were charged.



agriculture | horticulture | sericulture | plantations | forestry | garden | health care

WARRANTY AND FREE SERVICE COUPON



Small Maintenance. Big Savings.



Small Maintenance. Big Savings.



Small Maintenance. Big Savings.



KASEI
Multi-products,
multi-applications

Imported & Marketed by

RATNAGIRI IMPEX PVT LTD

Annapurna House, #1/1G, 7th Cross, New Guddadahalli

Mysore Road, Bangalore-560 026

Customer Care: 1800-425-3036

email: marketing@ratnagiriimpex.com

www.ratnagiriimpex.com



Marketed by:
**ratnagiri[®]
impex**
BRINGING YOU THE FUTURE... NOW

AN ISO 9001:2008 CERTIFIED COMPANY